

# VOLTAIRE SMALL ARCHITECTURAL FLOOD LIGHT

# VF1

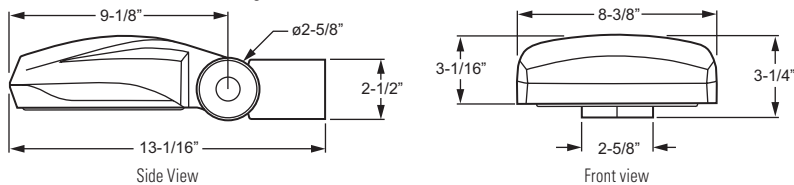
## LED



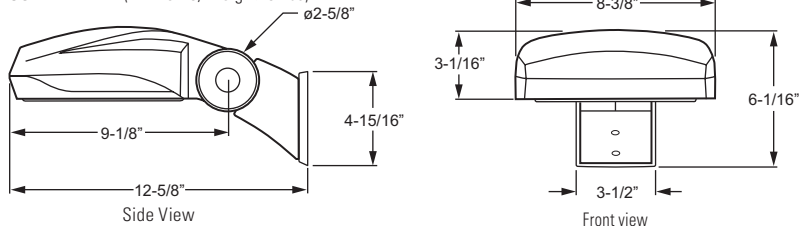
CATALOG #:		TYPE:	
PROJECT:		NOTES:	
<b>EXAMPLE</b> <b>VF1 - L35/750 - MF - SR - DBZ - OPTIONS - DIM - UNV</b>			
SERIES	LUMEN PACKAGE	CRI & CCT	DISTRIBUTION MOUNTING FINISH OPTIONS DRIVER VOLTAGE

## CROSS SECTIONS

### STRAIGHT ARM (EPA: 0.46/Weight: 8 Lbs)



### CURVED ARM (EPA: 0.46/Weight: 8 Lbs)



## ORDERING INFORMATION

### SERIES

**VF1** Voltaire Small Architectural Flood Light

### LED PACKAGE

Note: See page 3 for fixture performance data.

EXAMPLE: L35/750			
LUMEN PACKAGE	NOMINAL LUMENS	MINIMUM CRI & CCT	WATTAGE
L20	1,900	730 = 70 CRI, 3000K 740 = 70 CRI, 4000K	18
L35	3,500	750 = 70 CRI, 5000K	36

### DISTRIBUTION

See page 2 for distribution details.

NS	Narrow spot (3H x 3V)
MF	Medium flood (5H x 5V)
WF	Wide flood (6H x 6V)
HS	Horizontal spot (7H x 5V)
VF	Vertical flood (5H x 5V)
HF	Horizontal flood (7H x 5V)

### MOUNTING

SR	Straight arm
CU	Curved arm (vertical surface mount, downlight orientation only, includes cast adapter and mounting plate)

### FINISH OPTIONS

For custom color, visit the VF1 at [hew.com](http://hew.com).<sup>1</sup>

BLK	Black (RAL #9004)
DBZ	Dark bronze
DBR	Medium bronze
GRAY	Standard gray
SLV	Satin aluminum (RAL #9006)
WHT	White (RAL #9003)

### OPTIONS (Factory-installed)

See page 2 option details.

PC	Factory-installed button-style photocell (120V, 208V, 240V, or 277V only; must specify voltage)
WG	Wireguard, 11-gauge tempered steel with chrome powder-coat finish, factory-installed <sup>2</sup>
FVS	Flush vandal shield, 3/16" clear polycarbonate, factory-installed <sup>2</sup>

### ACCESSORIES (Ordered separately, field-installed)

Accessories ordered separately, see page 4 for details. Mounting accessories available (straight arm only), ordered separately, see page 4 for details.

VF1CS	Cutoff shield, field-installed <sup>2</sup>
VF1FS	Full cutoff shield, field-installed <sup>2</sup>

### DRIVER

DIM	10% dimming driver prewired for 0-10V low voltage applications
-----	--

### VOLTAGE

120	120V
208	208V
240	240V
277	277V
UNV	120-277V
347	347V
480	480V

## FEATURES

### GENERAL

- Engineered with the highest quality materials to ensure reliability, performance, and quality.
- Low-profile, contoured architectural design blends with both contemporary or traditional architecture.
- Architectural appearance is preserved via concealed heatsink design.
- 40% energy savings over HID systems.
- Six standard finish options.
- This fixture is proudly made in the USA.

### CONSTRUCTION

- Sealed, die-cast housing with stainless steel fasteners is rugged and durable.
- Sturdy, integral knuckle design features locking teeth for reliable performance.
- IP66 Rated
- ANSI 3G (Straight arm fixture only.)

### PERFORMANCE & LIFETIME

- Rated >50,000 hours at 70% lumen maintenance (L70).
- Delivers 1,900-3,500 nominal lumens
- Up to 108 lumens per watt
- ANSI 3000K, 4000K and 5000K CCT, minimum 70 CRI

### THERMAL

- Integral die-cast aluminum heatsink provides optimal passive thermal management.
- Rated for -30°C to 50°C ambient operating temperature.

### OPTICAL

- Acrylic precision optics produce industry-standard floodlight distributions to provide precise optical control.
- Optional half and full cutoff shields minimize glare and unwanted spill light.

### ELECTRICAL

- 0-10V dimming standard.
- 10kA/10kV surge protection standard.
- Single-board LED system design minimizes electrical connection points for increased reliability.

<sup>1</sup> For custom colors other than RAL, manufacturers' code plus two swatches (minimum 1" square) required.

<sup>2</sup> Fixture can accommodate only one face-mounted option/accessory.



## LED

## SPECIFICATIONS

**Housing** – Die-cast aluminum enclosure, sealed to protect electrical components.

**Thermal Management** – Integral die-cast aluminum heatsink provides passive thermal management. Rated -30°C to 50°C ambient operating temperature.

**Optical System** – Precision, injection-molded, refractive acrylic lensing produces standard NEMA floodlight distributions. Clear tempered glass lens.

**LED Assembly** – Circuit board design incorporates TVS (transient-voltage-suppression) diodes to protect against ESD events. ANSI 3000K, 4000K, and 5000K CCT, minimum 70 CRI LEDs.

**LED Driver** – Class 2 constant-current driver, 0-10V dimming.

**Electrical** – 120-277, 347, and 480 VAC input range; 50-60Hz; power factor >.90; THD <20% at full load. FCC Class A compliant. 10kA/10kV surge protection standard.

**Finish** – Super durable polyester powder coat bonded to phosphate-free, multi-stage pretreated metal, meets and exceeds AAMA 2604 specifications for outdoor durability. Available in six standard colors. Custom colors available.

**Mounting** – Straight arm slip-fits  $\phi 1-1/2"$  ( $\phi 1-7/8"$  O.D.) tenon. Curved arm mounts to vertical surface or pole, downlight orientation only using cast adapter and mounting plate provided. Must be anchored to adequate structure that can safely support fixture weight.

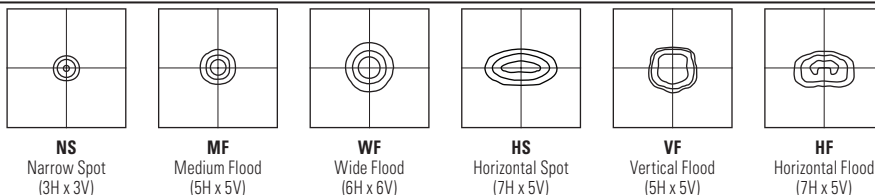
**Labels** – cCSAus listed to STD22.2 No 250.0 certified as luminaire suitable for wet locations.

**Certifications & Qualifications** –

- L70 >50,000 hours per IES TM-21
- Tested to IES LM-79-08 standards
- Lighting Facts listed.
- DLC qualified products listed at [www.designlights.org](http://www.designlights.org).
- IDA Dark-Sky approved (horizontal mount only with LEDs facing ground).
- IP66 rated.
- Meets the American National Standard for Roadway and Area Lighting Equipment – Luminaire Vibration (ANSI C136.31-2010). Straight arm fixture only.
- RoHS compliant.

**Warranty** – 5-year limited warranty, see [hew.com/warranty](http://hew.com/warranty).

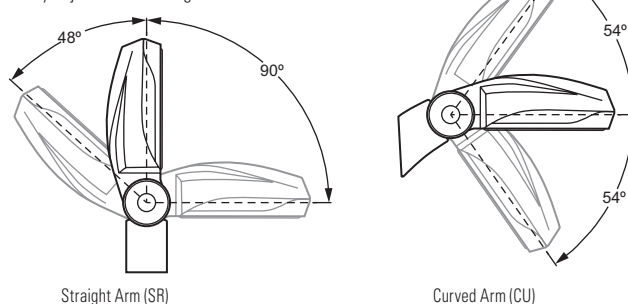
## DISTRIBUTION DETAILS



## FIXTURE DETAILS

## FIXTURE ADJUSTMENT DETAIL

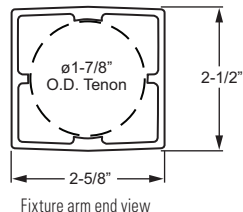
Easily adjusts with locking teeth in 6° increments.



## MOUNTING DETAILS

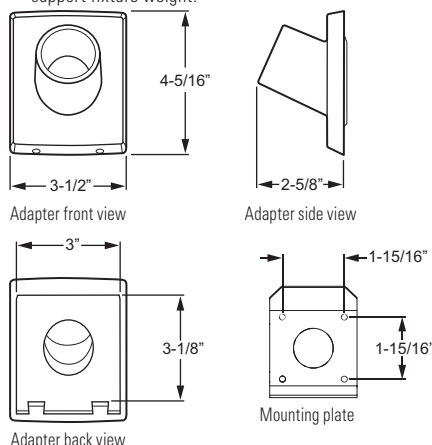
## STRAIGHT ARM (SR) MOUNTING

- Mounts horizontally or vertically to  $\phi 1-1/2"$  ( $\phi 1-7/8"$  O.D.) tenon.
- Up or down light applications.
- 360° rotation on mounting tenon.
- Additional mounting accessories available, see page 4 for details.



## CURVED ARM (CU) MOUNTING

- Mounts to vertical surface or pole, downlight orientation only, using cast adapter and mounting plate provided.
- Must be anchored to adequate structure that can safely support fixture weight.



## OPTIONS (Factory-installed)

FVS<sup>1</sup>

Flush vandal shield, 3/16" clear polycarbonate, factory-installed<sup>1</sup>

WG<sup>1</sup>

Wireguard, 11-gauge tempered steel with chrome powder-coat finish, factory-installed<sup>1</sup>



PC

Factory-installed button-style photocell, (120V, 208V, 240V, or 277V only; must specify voltage)

<sup>1</sup> Fixture can accommodate only one face-mounted option/accessory.



DLC qualified products listed at [www.designlights.org](http://www.designlights.org).

The U.S. Department of Energy's Lighting Facts® Program has verified product performance based on industry-standardized testing. For details, see H.E. Williams VF1 series at [www.lightingfacts.com](http://www.lightingfacts.com).



# VOLTAIRE SMALL ARCHITECTURAL FLOOD LIGHT

# VF1

## LED

### FIXTURE PERFORMANCE DATA

LUMEN PACKAGE	AVERAGE SYSTEM WATTAGE <sup>1</sup>	CURRENT (MA)	DISTRIBUTION	EFFICACY (LM/W) <sup>2 3</sup>	FLUX (LM) <sup>1 2</sup>	NEMA CLASSIFICATION	
						HORIZONTAL	VERTICAL
L20	18	350	NS	97	1742	3	3
			MF	95	1711	5	5
			WF	104	1853	6	6
			HS	103	1836	7	5
			VF	108	1942	5	5
			HF	108	1948	7	5
L35	36	700	NS	87	3131	3	3
			MF	85	3075	5	5
			WF	93	3331	6	6
			HS	92	3300	7	5
			VF	97	3490	5	5
			HF	97	3501	7	5

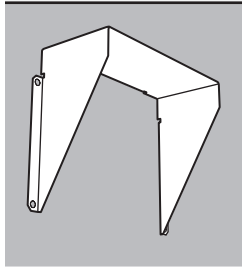
<sup>1</sup> Efficacy and flux shown are for 5000K CCT. Flux multipliers: 0.96 for 4000K, 0.86 for 3000K

<sup>2</sup> Photometrics tested in accordance with IESNA LM-79. Results shown are at 25°C ambient temperature.

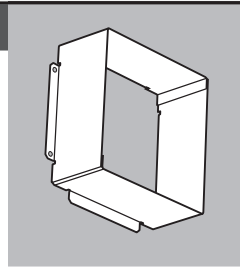
<sup>3</sup> Restrictions may apply, see DLC qualified products list at [www.designlights.org](http://www.designlights.org)

SEE BACK FOR ACCESSORIES

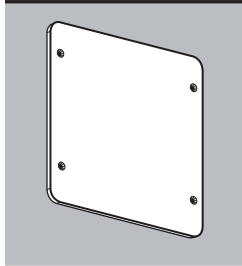


**ACCESSORIES** (Ordered separately, field-installed)**NOTE:** Fixture can accommodate only one face-mounted option/accessory.**CUTOFF SHIELD**

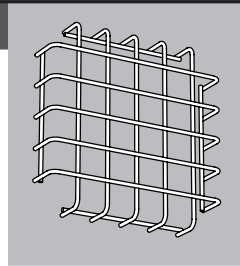
**VF1CS**— Cutoff shield, 1/16" thick aluminum, field-installed. Must specify finish. Includes (4) #6-32 screws. 6-1/2" x 5-1/4" x 2-1/2"  
EPA: 0.12/Weight: 0.20 Lbs.

**Example: VF1CS-DBZ****FULL CUTOFF SHIELD**

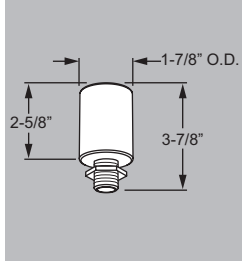
**VF1FS**— Full cutoff shield, 1/16" thick aluminum, field-installed. Must specify finish. Includes (4) #6-32 screws. 6-5/8" x 6-5/8" x 2-1/2"  
EPA: 0.19/Weight: 0.39 Lbs.

**Example: VF1FS-DBZ****VANDAL SHIELD KIT** (Field-installed)

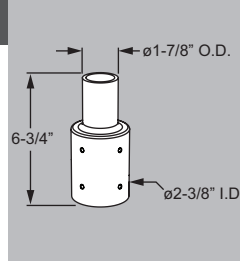
**VF1FVS** Flush vandal shield kit, 3/16" clear polycarbonate, field-installed. Includes (4) #6-32 screws and clips.  
EPA: 0.01/Weight: 0.26 Lbs.

**WIREGUARD KIT** (Field-installed)

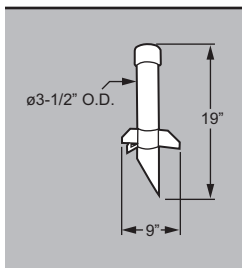
**WG-VF1** Wireguard kit, 11-gauge tempered steel with chrome powder-coat finish, field-installed. Includes (8) #6-32 screws and clips.  
EPA: 0.12/Weight: 0.38 Lbs.

**MOUNTING ACCESSORIES – STRAIGHT ARM ONLY** (Ordered separately)**THREADED ADAPTER**

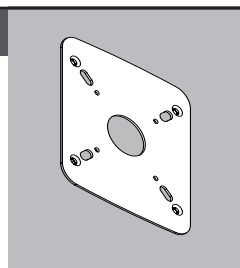
**VF1TA** 1/2" NPS stainless steel threaded nipple with hex locknut on a cast aluminum anodized  $\phi 1-7/8$ " O.D. adapter  
EPA: 0.00/Weight: 0.61 Lbs.

**TENON REDUCER**

**VF1TR**— Die-cast aluminum adapter/reducer, slipfits a  $\phi 2$ " tenon. Must specify finish.  
EPA: 0.08/Weight: 1.37 Lbs.

**Example: VF1TR-DBZ****GROUND STAKE**

**STK** Ground stake, molded black plastic with integral splice compartment and 1/2" NPS threaded entry point for fixture mounting (requires VF1TA accessory, above)

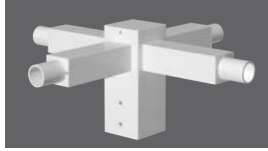
**WALL COVER**

**VF1WC**— 4" j-box cover for curved arm fixture, must specify finish.

**Example: VF1WC-DBZ**

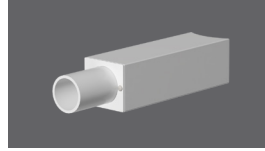
## SERIES

Note: Tenons cannot be mounted in down orientation. Mounting accessories are for use with straight arm (SR) fixtures only.



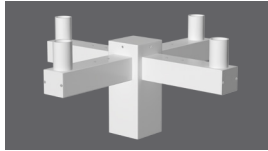
**TMHT Pole Top Tenon - Horizontal Fixture Mount**  
Example: **VF1-TMHT-SQ-T238-S-SLV**

- Mounts on 2-3/8" - 3" pole top tenons
- Round or square to match pole shape
- Mounting configurations for one to four fixtures
- Center tenon option available



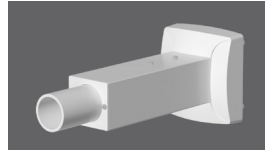
**DMHT Direct Mount - Horizontal Fixture**  
Example: **VF1-DMHT-SQ-S-SLV**

- Mounts to round or square poles
- Fixture can be mounted for up or downlight



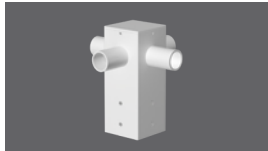
**TMVT Pole Top Tenon - Vertical Fixture Mount**  
Example: **VF1-TMVT-SQ-T238-S-SLV**

- Mounts on 2-3/8" - 3" pole top tenons
- Round or square to match pole shape
- Vertical fixture tenons
- Mounting configurations for one to four fixtures
- Center tenon option available



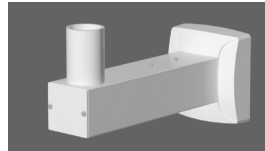
**WMHT Wall Mount - Horizontal Fixture**  
Example: **VF1-WMHT-SLV**

- Cast cover matches fixture aesthetics
- Fixture can be mounted for up or downlight



**HT Horizontal Pole Top Tenon**  
Example: **VF1-HT-SQ-T238-S-SLV**

- Mounts on 2-3/8" - 3" pole top tenons
- Round or square to match pole shape
- Horizontal fixture tenons
- Mounting configurations for one to four fixtures
- Center tenon option available



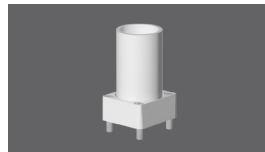
**WMVT Wall Mount - Vertical Fixture**  
Example: **VF1-WMVT-SLV**

- Cast cover matches fixture aesthetics
- Fixtures can be rotated 360° around tenon



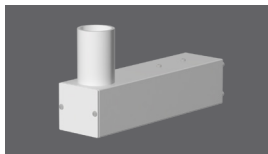
**VT Vertical Pole Top Tenon**  
Example: **VF1-VT-SQ-T238-SLV**

- Mounts on 2-3/8" - 3" pole top tenons
- Round or square to match pole shape
- Vertical fixture tenon



**SM Surface Mount**  
Example: **VF1-SM-SLV**

- Mounts to any flat surface, with tenon in upward or horizontal orientation
- Fixtures can be rotated 360° around tenon



**DMVT Direct Mount - Vertical Fixture**  
Example: **VF1-DMVT-SQ-S-SLV**

- Mounts to round or square poles
- Fixtures can be rotated 360° around tenon



**ST Stanchion Mount**  
Example: **VF1-ST-SLV**

- Profile matches VF1 and VF2 arms
- Stanchion arm base cover and fixture rotate 360° around base

## ORDERING INFORMATION

EXAMPLE	VF1-TMVT	-	SQ	-	T238	-	S	-	DBZ	-	OPTIONS
	SERIES		SHAPE		TENON SIZE		MOUNTING CONFIGURATION		FINISH OPTIONS		OPTIONS

SERIES	SIZE/SHAPE	TENON SIZE (BY OTHERS)	MOUNTING CONFIGURATION	FINISH OPTIONS	OPTIONS
<b>TENON MOUNT</b>					
VF1-TMHT VF1-TMVT VF1-HT	SQ = Square RD = Round	T238 = ø2-3/8" O.D. T278 = ø2-7/8" O.D. T3 = ø3" O.D.	S = Single D90 = Double @ 90° D180 = Double @ 180° T90 = Triple @ 90° T120 <sup>1</sup> = Triple @ 120° <sup>1</sup> Q90 = Quad @ 90°	BLK = Black DBZ = Dark bronze DBR = Medium bronze GRAY = Standard gray SLV = Satin aluminum WHT = White	CT = Center tenon
VF1-VT	SQ = Square RD = Round	T238 = ø2-3/8" O.D. T278 = ø2-7/8" O.D. T3 = ø3" O.D.			
<b>DIRECT MOUNT</b>					
VF1-DMVT VF1-DMHT	SQ = Square pole 3R = 3" round pole 4R = 4" round pole 5R = 5" round pole		S = Single D90 = Double @ 90° D180 = Double @ 180° T90 = Triple @ 90° T120 <sup>1</sup> = Triple @ 120° <sup>1</sup> Q90 = Quad @ 90°	BLK = Black DBZ = Dark bronze DBR = Medium bronze GRAY = Standard gray SLV = Satin aluminum WHT = White	
VF1-WMHT VF1-WMVT VF1-SM VF1-ST					

<sup>1</sup> For RD option only



## LED

## LOAD DATA

MODEL NUMBER	ARM LENGTH <sup>1</sup>	MOUNTING CONFIGURATION	EPA <sup>2</sup>	WEIGHT
VF1-SM		-	0.04	0.41
VF1-ST	10"	-	0.75	3.48
VF1-DMHT-SQ VF1-DMHT-RD	8"	S D90 D180 T90 T120 Q90	0.42	2.33
VF1-DMVT-SQ VF1-DMVT-RD	10"	S D90 D180 T90 T120 Q90	0.51	2.39
VF1-WMHT	8"	-	0.61	3.51
VF1-WMVT	10"	-	0.71	3.58
VF1-TMHT-RD	8"	S D90 D180 T90 T120 Q90	1.02 1.36 1.36 1.69 1.64 2.02	7.67 9.79 9.79 11.91 11.91 14.03
VF1-TMVT-RD	10"	S D90 D180 T90 T120 Q90	1.11 1.54 1.55 1.96 1.90 2.65	7.35 9.15 9.15 10.95 10.95 12.75
VF1-TMHT-SQ	8"	S D90 D180 T90 Q90	1.17 1.44 1.45 1.58 1.82	9.34 11.48 11.48 13.68 15.76
VF1-TMVT-SQ	10"	S D90 D180 T90 Q90	1.27 1.58 1.69 2.00 2.33	9.06 10.86 10.86 12.66 14.46
VF1-VT-RD	-	-	0.69	5.89
VF1-VT-SQ	-	-	0.83	7.47
VF1-HT-RD	-	S D90 D180 T90 T120 Q90	0.69	5.77 6.25 6.25 6.73 6.73 7.21
VF1-HT-SQ	-	S D90 D180 T90 Q90	0.83	7.42 7.64 7.64 7.86 8.08

<sup>1</sup> Maximum arm length cannot exceed 28.188" long in any configuration.

<sup>2</sup> EPA is calculated for mounting accessories only.