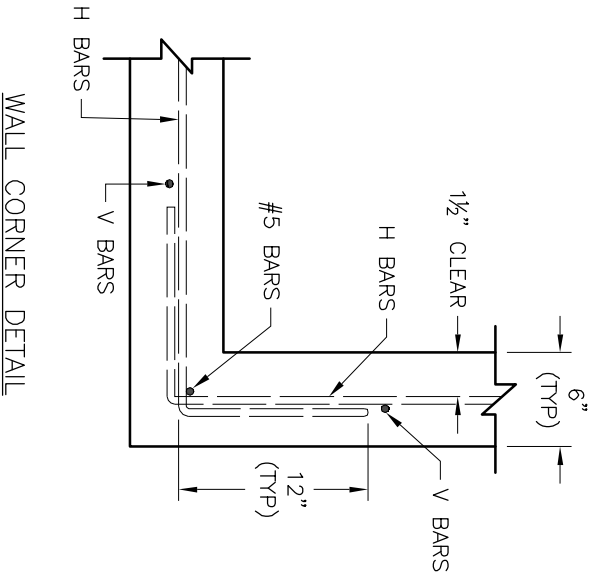
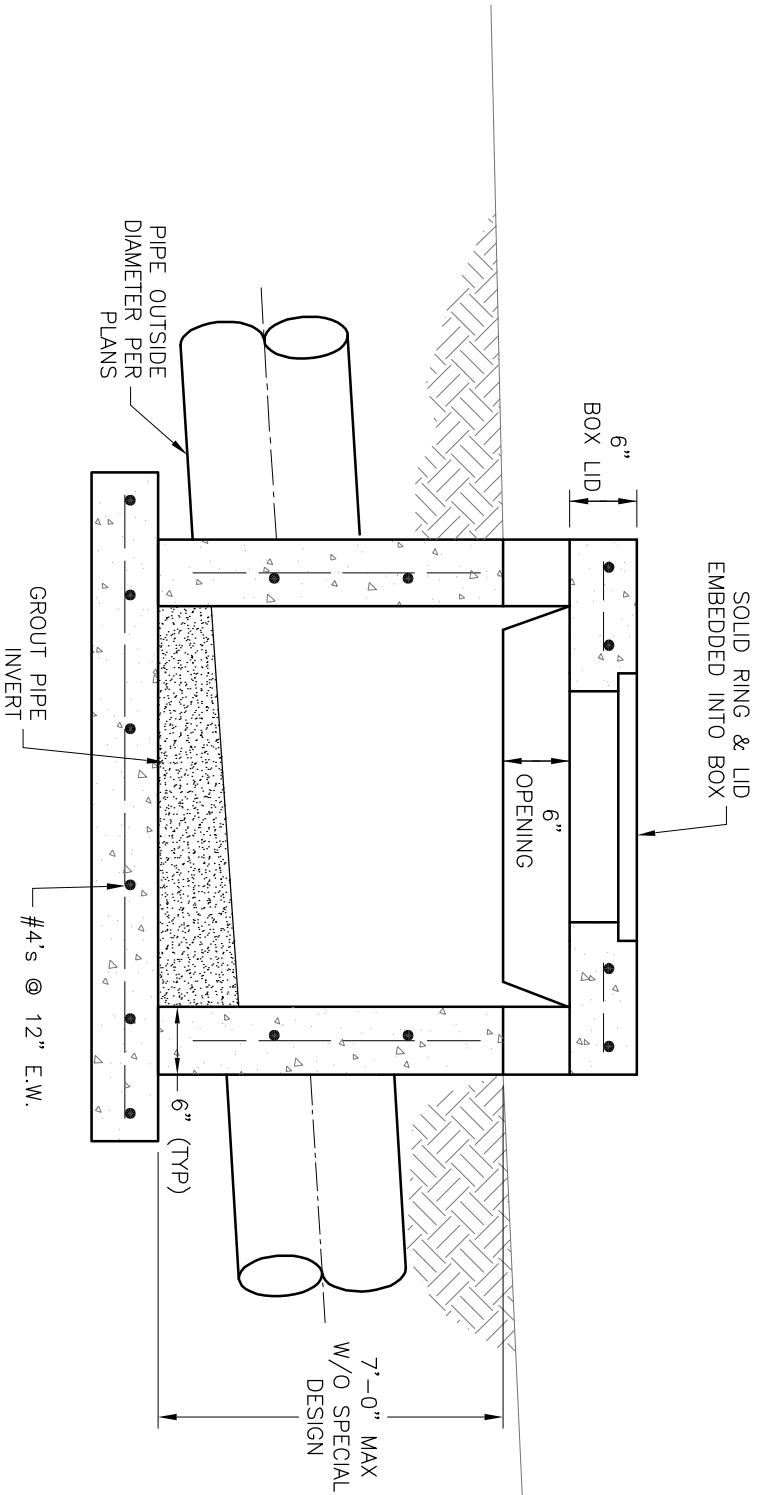


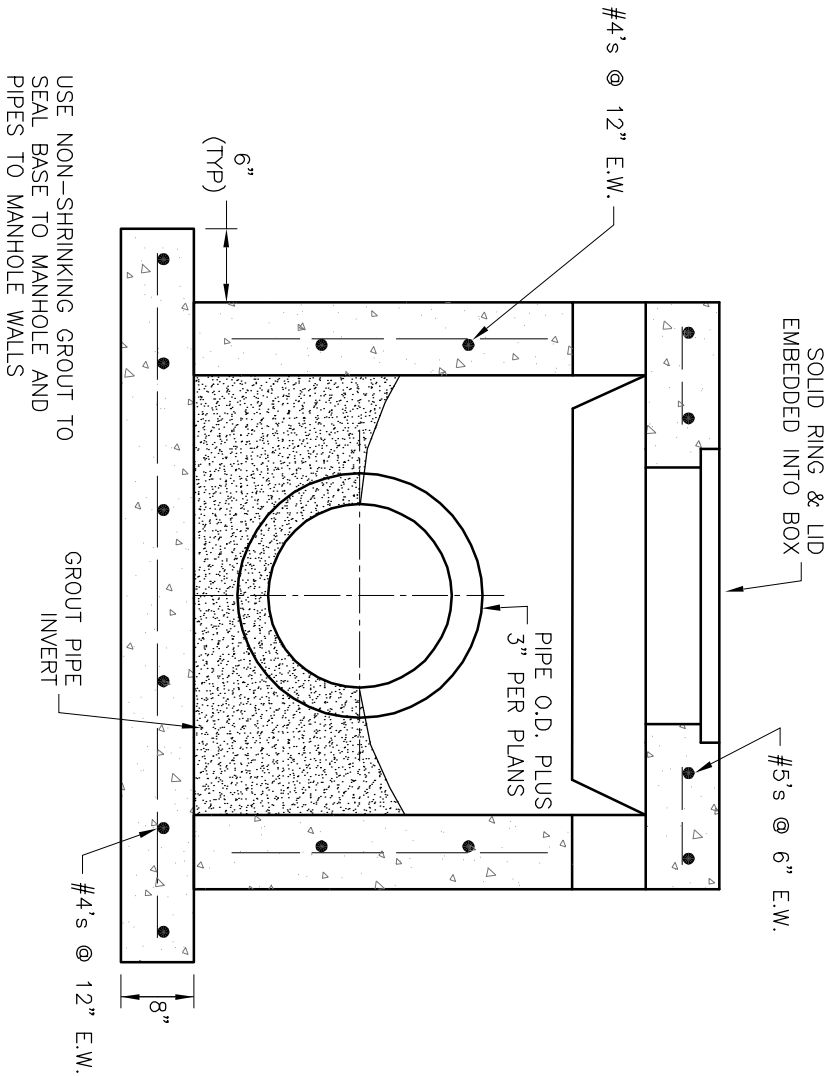
PLAN VIEW



WALL CORNER DETAIL



SECTION B-B



SECTION A-A

GENERAL NOTES:

1. LOCATE RING AND COVER OVER OUTLET ON BLANK WALL.
2. USE 3/4" CHAMFER ON ALL EXPOSED CONCRETE CORNERS.
3. FLOOR OF INLET GROUTED AND SHAPED TO MATCH PIPE INVERT TO PROVIDE SMOOTH FLOW.
4. STEPS REQUIRED AT 16" O.C. WHEN DEPTH FROM TOP OF CASTING TO INVERT EXCEEDS 3' ON BLANK WALL IF POSSIBLE.
5. BOXOUTS WILL NOT BE ALLOWED TO PROJECT THROUGH THE CORNERS OF THE STRUCTURE.
6. THE MINIMUM REINFORCING SHALL BE 1 H-BAR OVER A CAST-IN-PLACE PIPE AND 2 H-BARS OVER A PRECAST BOXOUT.
7. SHOW FIELD INLET ORIENTATION ON PLANS PLUS NUMBER AND SIDE OF OPENINGS.
8. PRECAST LIDS SHALL BE PINNED, SEALED WITH NON-SHRINKABLE GROUT AND REMOVABLE FOR FUTURE MAINTENANCE.
9. FOR RING AND COVER SEE THE STORMWATER APPROVED PRODUCT LIST.



LEE'S SUMMIT
MISSOURI

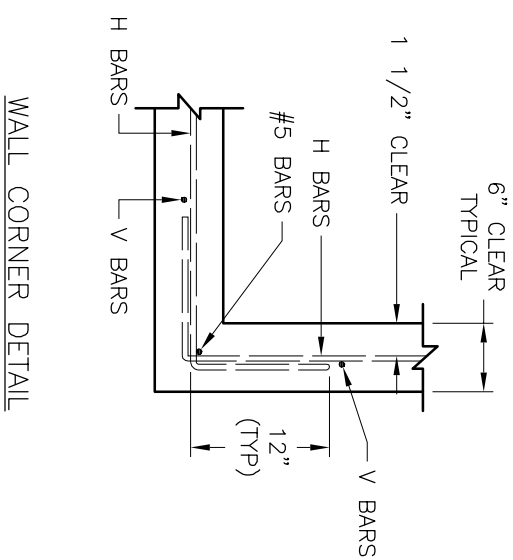
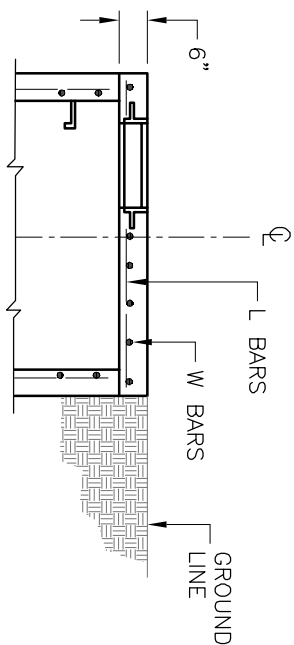
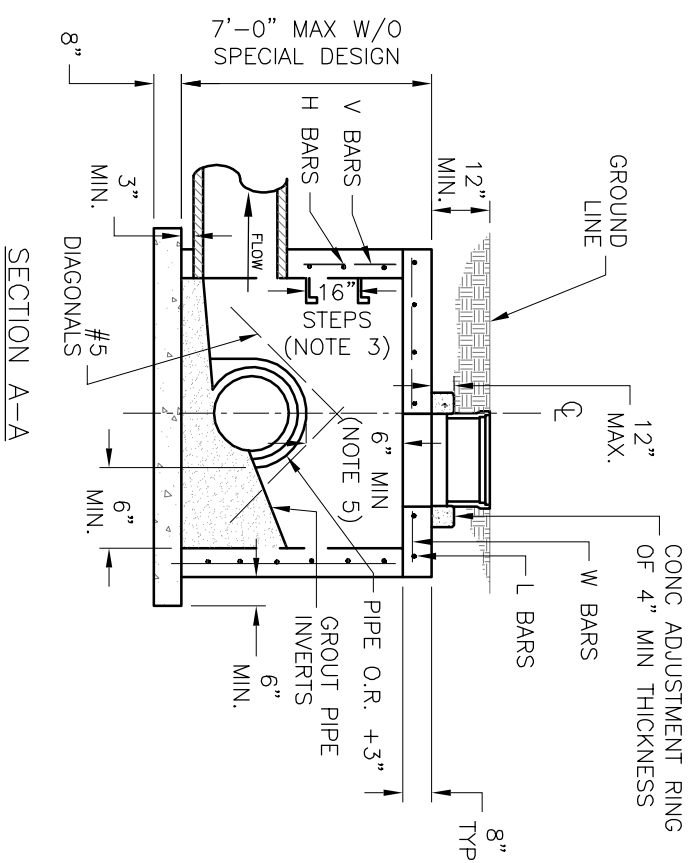
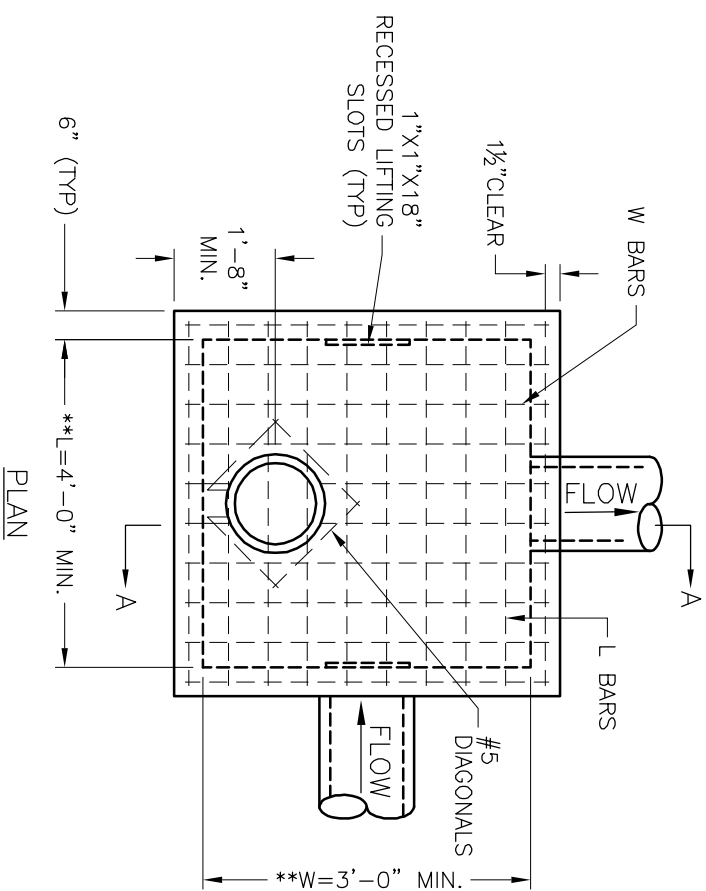
PUBLIC WORKS ENGINEERING DIVISION | 220 SE GREEN STREET | LEE'S SUMMIT, MO 64063

Project: STANDARD DETAILS
CITY OF LEE'S SUMMIT, MO
LEE'S SUMMIT, JACKSON COUNTY, MO

Sheet Name: FIELD INLET DETAIL

Drawn By: MJF
Checked By: DL
Date: 04/17
Proj. #:

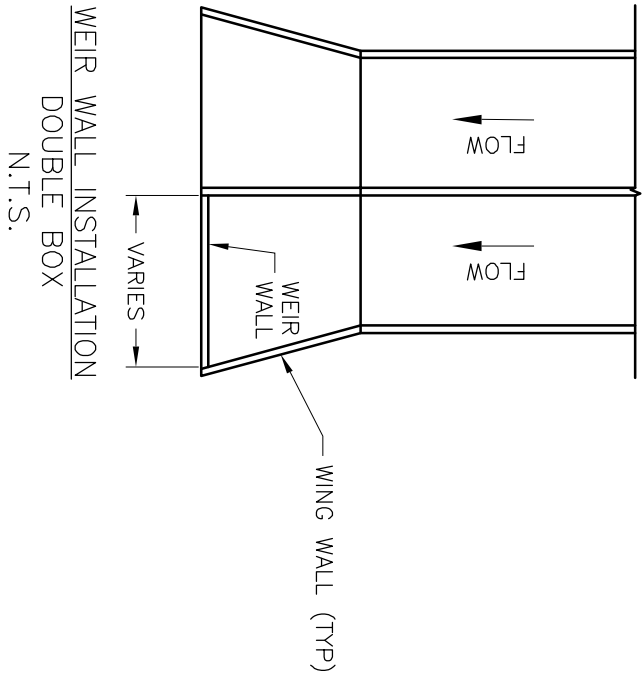
STM-2



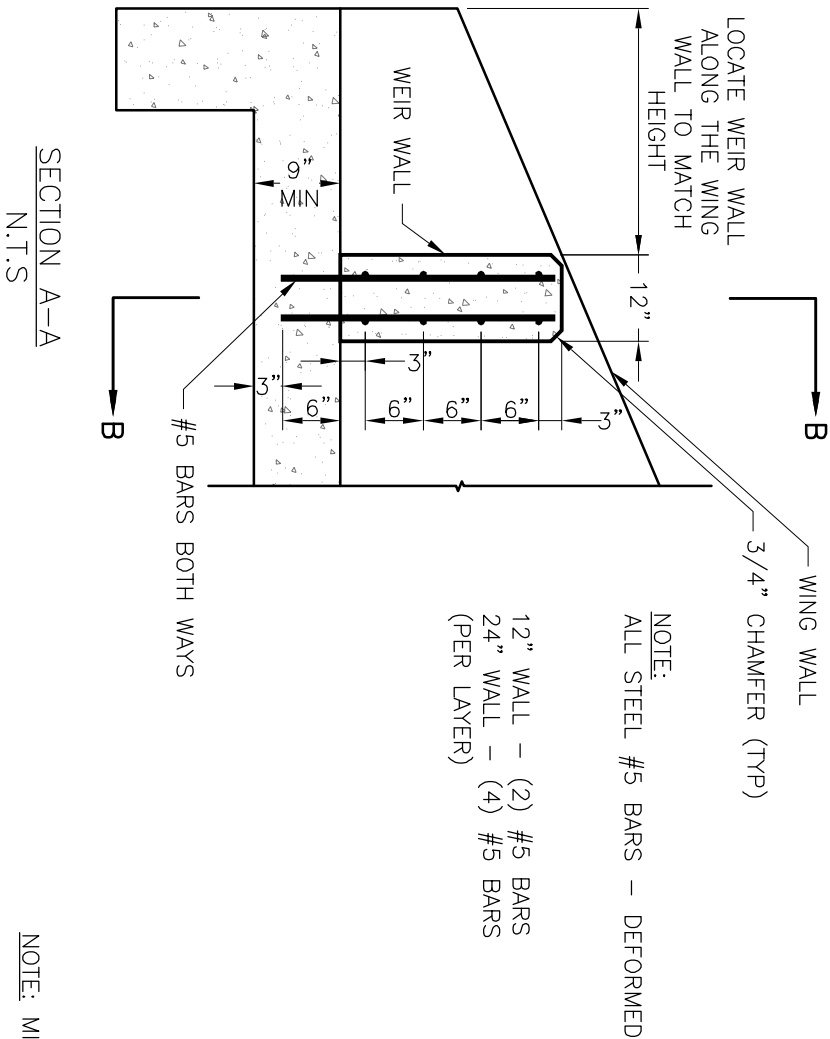
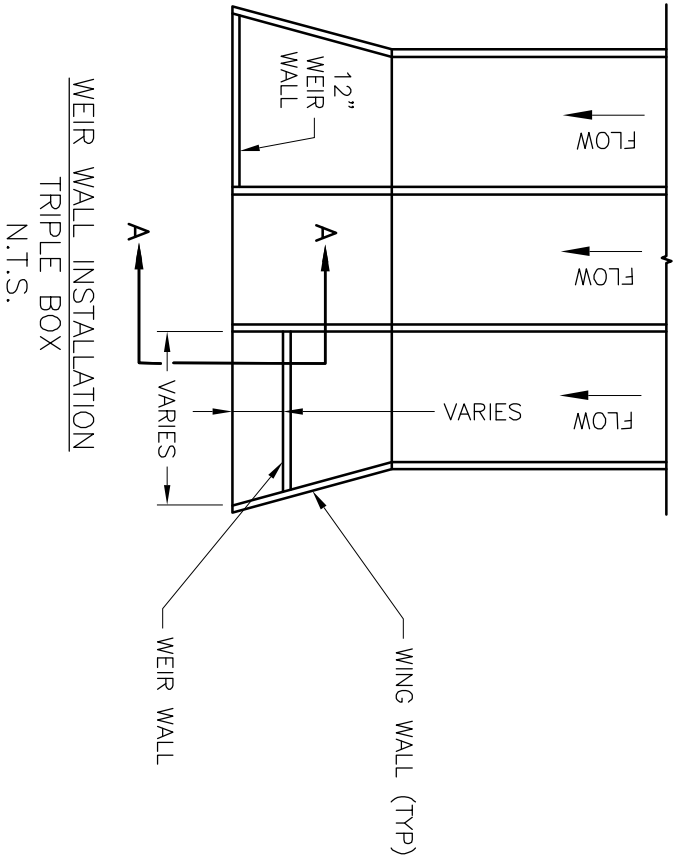
BARS	BAR SIZE	SPACING (IN.)
H	4	12
V	4	12
L	5	6
W	5	6

** INCREASE IN MULTIPLES OF 6"
(7'-0") MAX WITHOUT SPECIAL DESIGN.
(SEE PROJECT PLANS FOR DETAILS)

1. LOCATE RING AND COVER ON BLANK WALL.
2. USE $\frac{3}{4}$ " CHAMFER STRIP OR $\frac{1}{2}$ " R EDGER TOOL ON ALL EXPOSED CONCRETE CORNERS.
3. STEPS REQUIRED AT 16" O.C. WHEN DEPTH FROM TOP OF CASTING TO INVERT EXCEEDS 4' ON BLANK WALL IF POSSIBLE.
4. BOXOUTS WILL NOT BE ALLOWED TO PROJECT THROUGH THE CORNERS OF THE STRUCTURE AND THE MINIMUM DISTANCE BETWEEN BOXOUTS IS 6".
5. THE MINIMUM REINFORCING SHALL BE 1 H-BAR OVER A CAST-IN-PLACE PIPE AND 2 H-BARS OVER A PRECAST BOXOUT.
8. PRECAST LIDS SHALL BE PINNED, SEALED WITH NON-SHRINKABLE GROUT AND REMOVABLE FOR FUTURE MAINTENANCE.
9. REINFORCING OF COVERS IN STREETS REQUIRE SPECIAL DESIGN.
10. FOR RING AND COVER SEE THE STORMWATER APPROVED PRODUCT LIST.

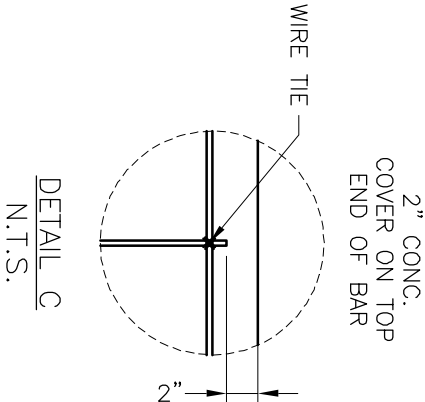
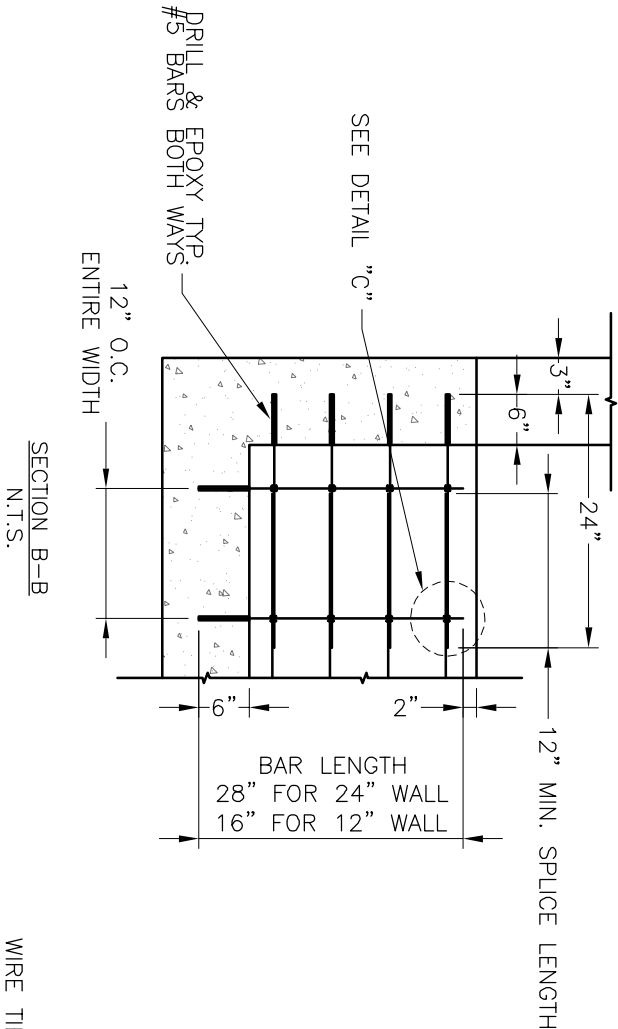


NOTE:
LOCATE WEIR WALL TO MATCH WING WALL HEIGHT



NOTE:
ALL STEEL #5 BARS - DEFORMED
12" WALL - (2) #5 BARS
24" WALL - (4) #5 BARS
(PER LAYER)

NOTE: MIN. 4000 PSI CONCRETE KCM MB



LEE'S SUMMIT
MISSOURI

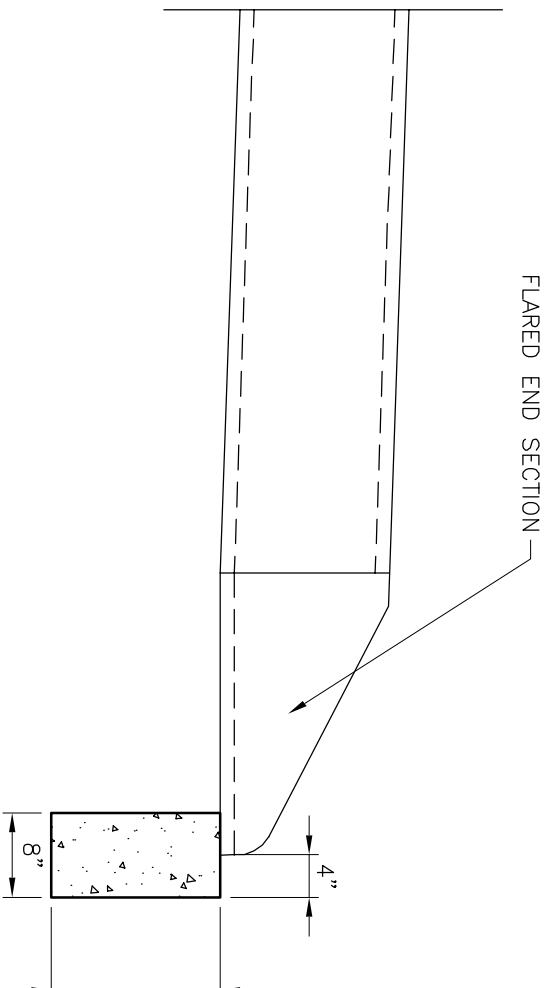
PUBLIC WORKS ENGINEERING DIVISION | 220 SE GREEN STREET | LEE'S SUMMIT, MO 64063

Project:
STANDARD DETAILS
CITY OF LEE'S SUMMIT, MO
LEE'S SUMMIT, JACKSON COUNTY, MO

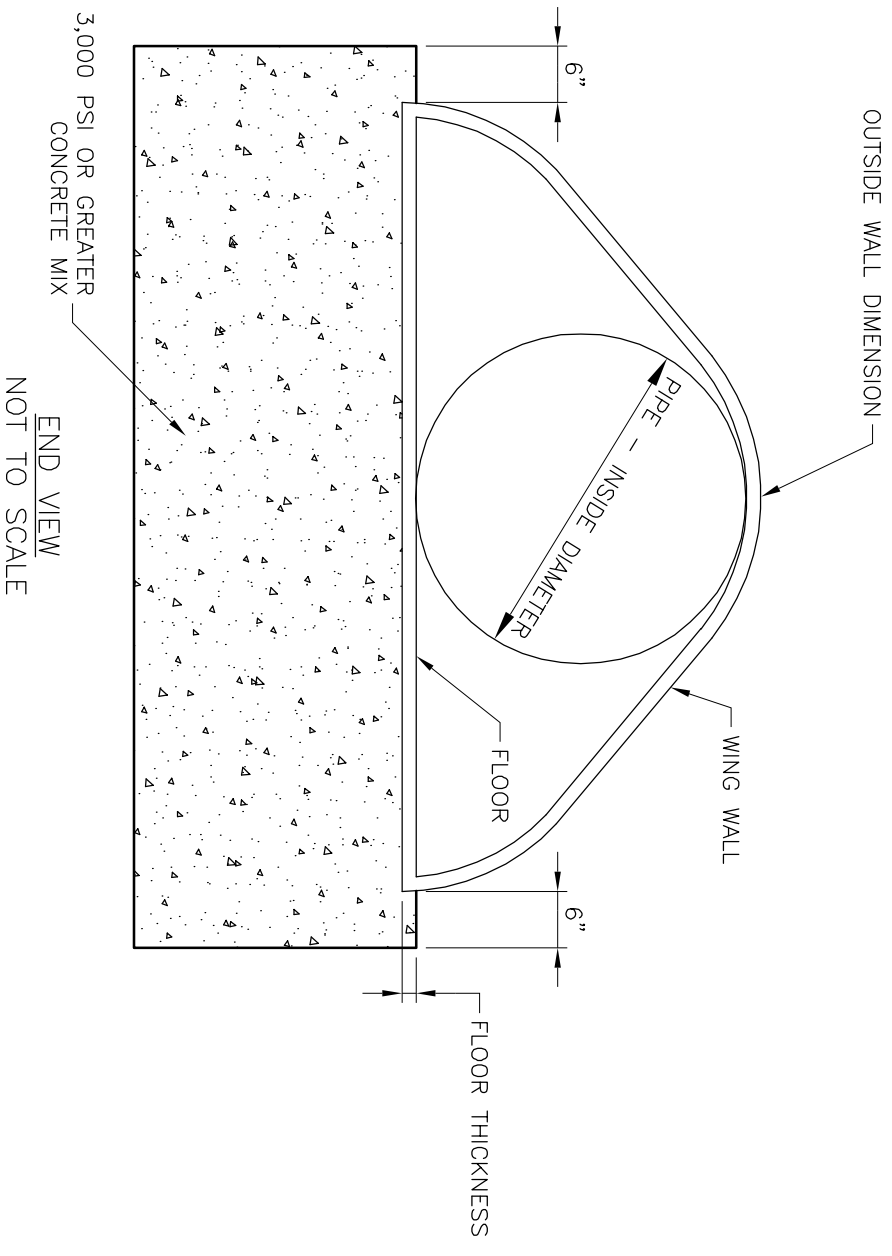
Sheet Name:
WEIR WALL DETAIL

Drawn By: MJF
Checked By: DL
Date: 04/17
Proj. #:

STM-4



PLAN VIEW
NOT TO SCALE



LEE'S SUMMIT MISSOURI

PUBLIC WORKS ENGINEERING DIVISION | 220 SE GREEN STREET | LEE'S SUMMIT, MO 64063

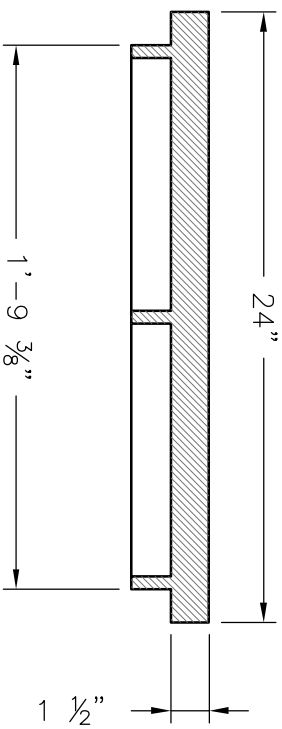
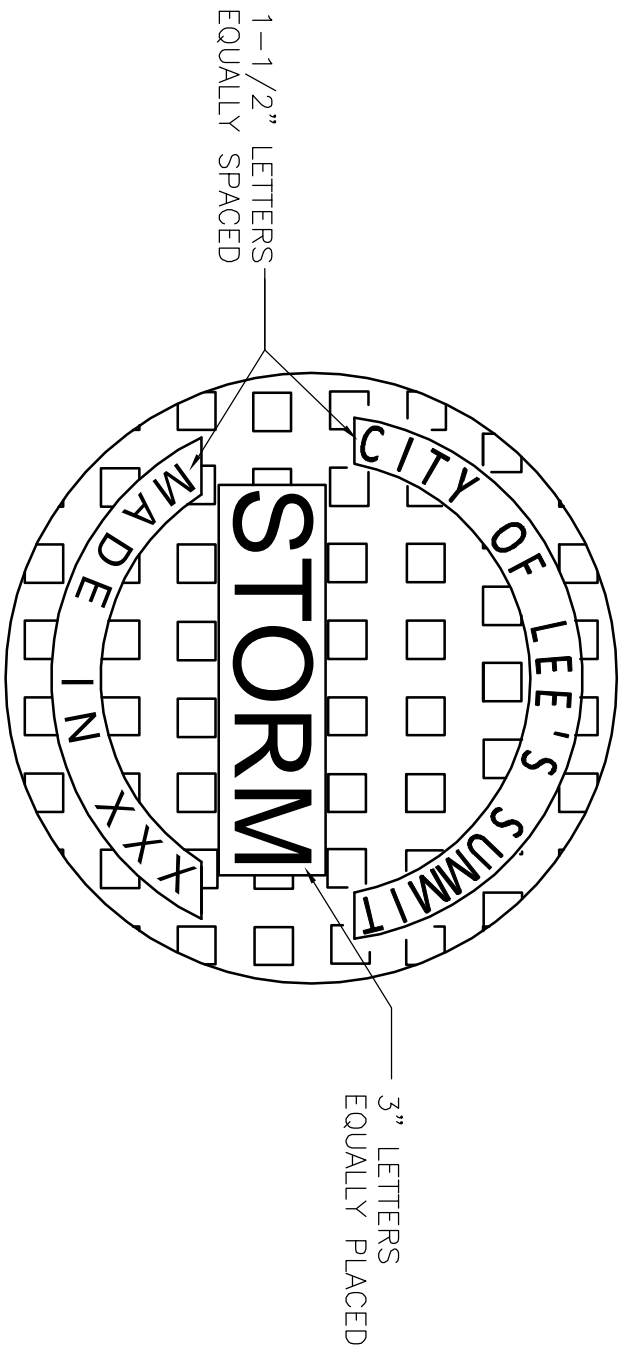
FLARED END SECTION SUPPORT DETAIL

Date: 04/17

Drawn By: MJF

Checked By: DL

STM-5



STANDARD 24" MANHOLE COVER
 MINIMUM WEIGHT = 160 LB
 NOTE: PICK HOLES NOT SHOWN

*COVER AND FRAME MODEL INFORMATION REFER TO
 THE STORMWATER APPROVED PRODUCT LIST.



LEE'S SUMMIT

M I S S O U R I

PUBLIC WORKS ENGINEERING DIVISION | 220 SE GREEN STREET | LEE'S SUMMIT, MO 64063

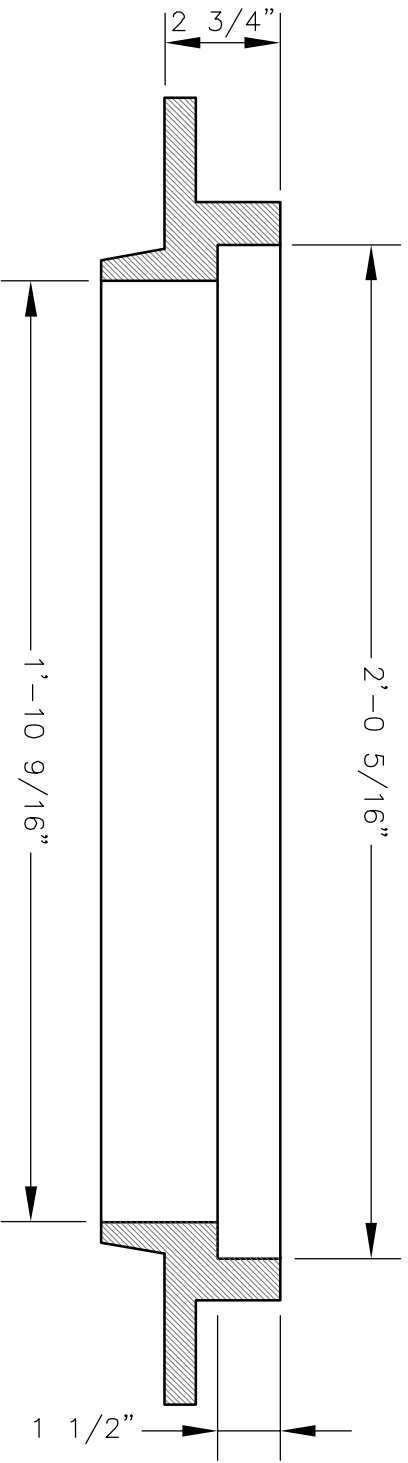
STORM MANHOLE COVER DETAIL

Date: 04/17

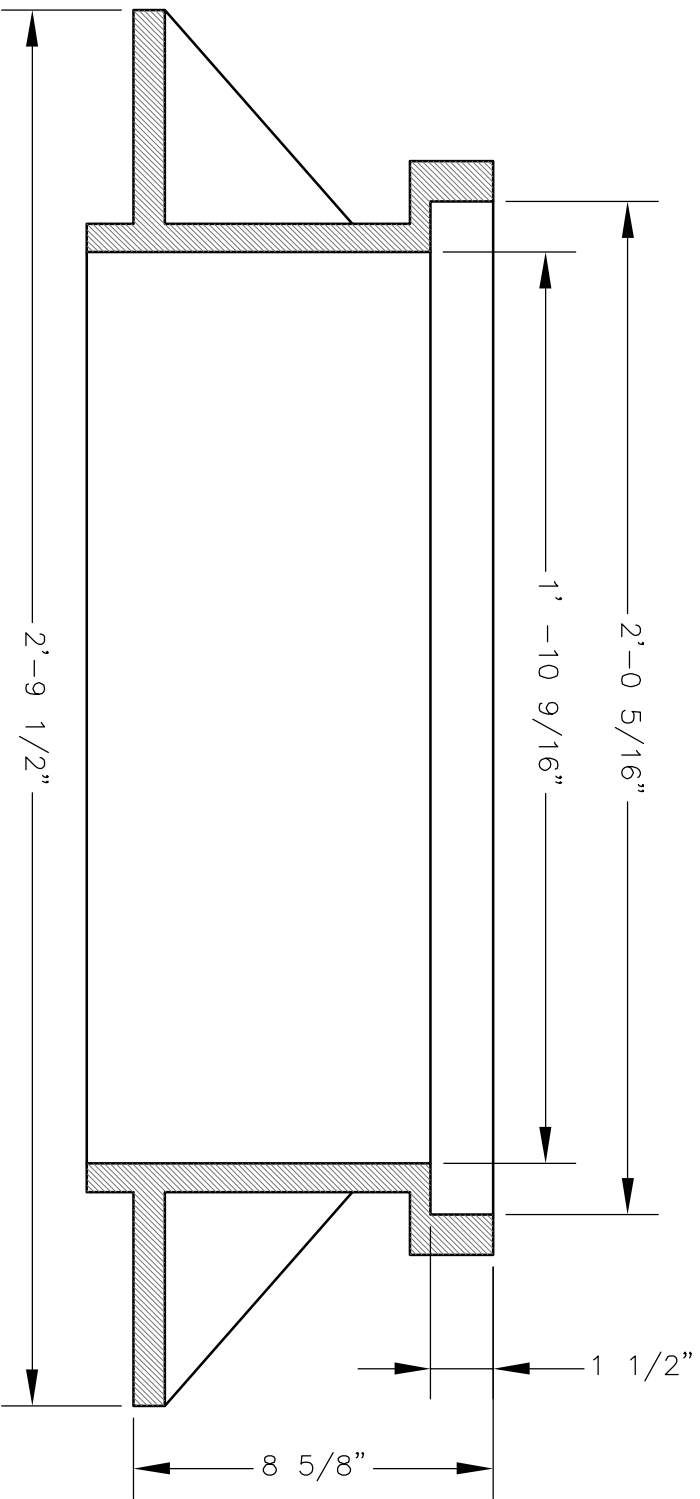
Drawn By: MJF

Checked By: DL

STM-6



SLAB MANHOLE FRAME
 LEE'S SUMMIT PART NO.: LS103A
 MINIMUM WEIGHT = 145 LB



STANDARD 24" MANHOLE FRAME
 LEE'S SUMMIT PART NO.: LS101A
 MINIMUM WEIGHT = 250 LB

*COVER AND FRAME MODEL INFORMATION REFER TO
 THE STORMWATER APPROVED PRODUCTS LIST.



LEE'S SUMMIT

M I S S O U R I

PUBLIC WORKS ENGINEERING DIVISION | 220 SE GREEN STREET | LEE'S SUMMIT, MO 64063

STORM MANHOLE FRAME DETAIL

Date: 04/17

Drawn By: MJF

Checked By: DL

STM-7