

Revisions:

Date: Description:

FDP Submittal

Village at
View High

Lee's Summit, Missouri

A Residential Development by:

Cityscape
Residential

This drawing as an instrument of services, is and shall remain the property of SGN+A and shall not be reproduced, published or used in any way without permission of SGN+A, Inc.

Sheet Title:

Building Type I,
Building Elevations

Date:

12/20/2016

Sheet Number:

A15



1 Building Type I, Bldg. 1
Scale: 3/32" = 1'-0"

Front Elevation (Parking Side)
Bldg. 4, similar



2 Building Type I, Bldg. 1
Scale: 3/32" = 1'-0"

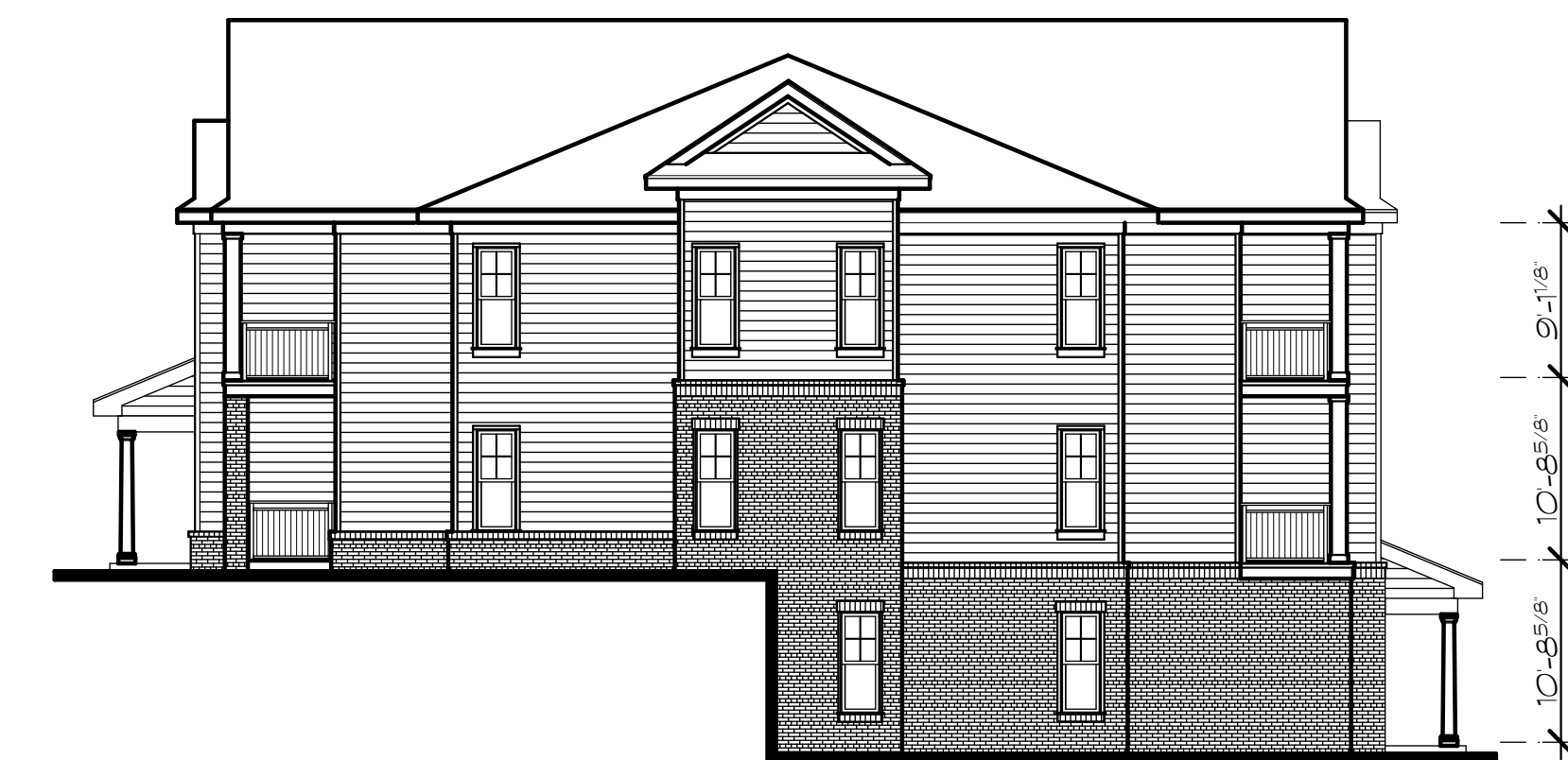
Rear Elevation
Bldg. 4, similar
Bldg. 6, similar



3 Building Type I
Scale: 3/32" = 1'-0"

Front Elevation (Parking Side)
Bldg. 15, similar

NOTE: DEVELOPER RESERVES THE RIGHT TO USE A MODIFIED, REVERSED COLOR PALETTE ON UP TO 30% OF THE BUILDINGS, SUCH COLOR SCHEME SUBJECT TO STAFF REVIEW AND APPROVAL.



4 Building Types I, Ia and Ib
Scale: 3/32" = 1'-0"

End Elevation



5 Building Type Ic, Bldg. 6
Scale: 3/32" = 1'-0"

End Elevation

Revisions:

Date:	Description:

FDP Submittal

Village at
View High

Lee's Summit, Missouri

A Residential Development by:

Cityscape
Residential

This drawing as an instrument of services, is and shall remain the property of SGN+A and shall not be reproduced, published or used in any way without permission of SGN+A, Inc.

Sheet Title:
Building Type II,
Building Elevations

Date:
12/20/2016

Sheet Number:

A16

Not Released for Construction



1 Building Type II, Bldg. 2
Scale: 3/32" = 1'-0" Front Elevation (Parking Side)
Bldgs. 11 & 14, similar



2 Building Type II, Bldg. 2
Scale: 3/32" = 1'-0" Rear Elevation
Bldgs. 11 & 14, similar



3 Building Type II, Bldg. 2
Scale: 3/32" = 1'-0" End Elevation

NOTE: DEVELOPER RESERVES THE RIGHT TO USE A MODIFIED, REVERSED COLOR PALETTE ON UP TO 30% OF THE BUILDINGS, SUCH COLOR SCHEME SUBJECT TO STAFF REVIEW AND APPROVAL.



1 Building Type III, Bldg. 9
Scale: 3/32" = 1'-0" Front Elevation (Parking Side)



5 Building Types III & IV
Scale: 3/32" = 1'-0" End Elevation



2 Building Type III, Bldg. 9
Scale: 3/32" = 1'-0" Rear Elevation

NOTE: DEVELOPER RESERVES THE RIGHT TO USE A MODIFIED, REVERSED COLOR PALETTE ON UP TO 30% OF THE BUILDINGS, SUCH COLOR SCHEME SUBJECT TO STAFF REVIEW AND APPROVAL.



3 Building Type IV, Bldg. 10
Scale: 3/32" = 1'-0" Parking Elevation, Bldg. 10
Bldg. 16, opposite hand
Bldg. 12, opp. hand, similar



4 Building Type IV, Bldg. 10
Scale: 3/32" = 1'-0" Rear Elevation, Bldg. 10
Bldg. 16, opposite hand
Bldg. 12, opp. hand, similar

Revisions:

Date: Description:

FDP Submittal

Village at View High

Lee's Summit, Missouri

A Residential Development by:

Cityscape
Residential

This drawing as an instrument of services, is and shall remain the property of SGN+A and shall not be reproduced, published or used in any way without permission of SGN+A, Inc.

Sheet Title:
Building Types III,
Building Elevations

Date:
12/20/2016

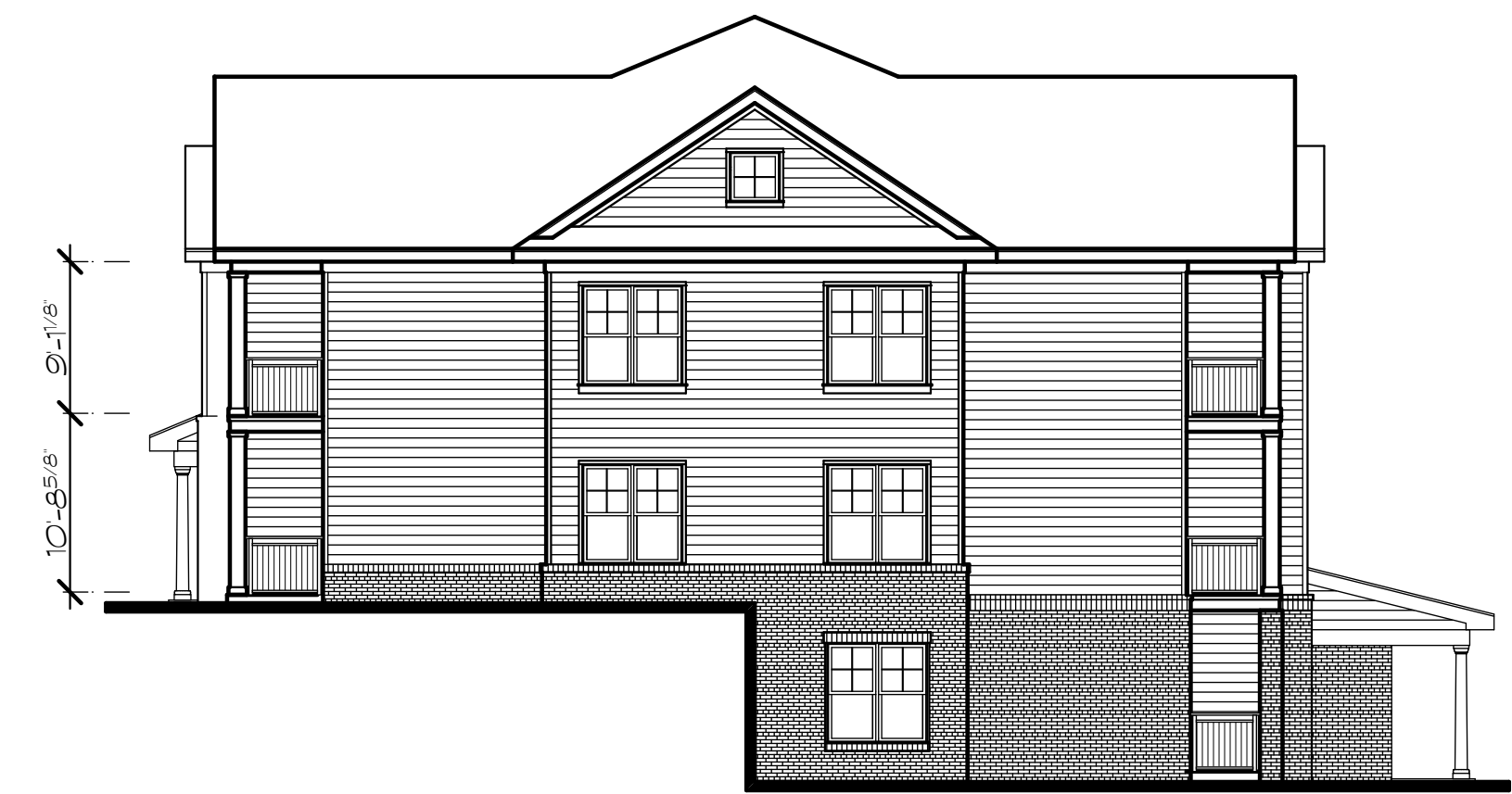
Sheet Number:

A17



1 Building Type V, Bldg. 3
Scale: 3/32" = 1'-0"

Parking Elevation



5 Building Type V & Va
Scale: 3/32" = 1'-0"

End Elevation

NOTE: DEVELOPER RESERVES THE RIGHT TO USE A MODIFIED, REVERSED COLOR PALETTE ON UP TO 30% OF THE BUILDINGS, SUCH COLOR SCHEME SUBJECT TO STAFF REVIEW AND APPROVAL.



2 Building Type V, Bldg. 3
Scale: 3/32" = 1'-0"

Rear Elevation



3 Building Type V, Bldg. 13
Scale: 3/32" = 1'-0"

Parking Elevation



4 Building Type Va, Bldg. 13
Scale: 3/32" = 1'-0"

Rear Elevation

SGN+A

Planning • Architecture
Landscape Architecture

SGN+A, Inc.
315 West Ponce de Leon Avenue
Suite 755
Decatur, Georgia 30030
Tel: 404.373.7370
Fax: 404.373.7372
www.sgnplusa.com

Revisions:

Date: Description:

FDP Submittal

Village at View High

Lee's Summit, Missouri

A Residential Development by:

Cityscape
Residential

This drawing as an instrument of services, is and shall remain the property of SGN+A and shall not be reproduced, published or used in any way without permission of SGN+A, Inc.

Sheet Title:

Building Types V and Va, Building Elevations

Date:

12/20/2016

Sheet Number:

A18

Not Released for Construction

Revisions:	
Date:	Description:

FDP Submittal

Village at View High

Lee's Summit, Missouri

A Residential Development by:

Cityscape
Residential

This drawing as an instrument of services, is and shall remain the property of SGN+A and shall not be reproduced, published or used in any way without permission of SGN+A, Inc.

Sheet Title:
Building Type VI and
VIa, Building
Elevations

Date:
12/20/2016

Sheet Number:

A19

Not Released for Construction



NOTE: DEVELOPER RESERVES THE RIGHT TO USE A MODIFIED, REVERSED COLOR PALETTE ON UP TO 30% OF THE BUILDINGS. SUCH COLOR SCHEME SUBJECT TO STAFF REVIEW AND APPROVAL.

1 Building Type VI, Bldg. 5; Type VIa, Bldg. 7
Scale: 3/32" = 1'-0"
Parking Elevation, Bldg. 5
Rear Elevation, Bldg. 7



2 Building Type VI, Bldg. 5
Scale: 3/32" = 1'-0"
Rear Elevation



4 Building Type VI, Bldg. 5
Scale: 3/32" = 1'-0"
End Elevation



3 Building Type VIa, Bldg. 7
Scale: 3/32" = 1'-0"
Parking Elevation



5 Building Type VIa, Bldg. 7
Scale: 3/32" = 1'-0"
End Elevation



NOTE: DEVELOPER RESERVES THE RIGHT TO USE A MODIFIED, REVERSED COLOR PALETTE ON UP TO 30% OF THE BUILDINGS, SUCH COLOR SCHEME SUBJECT TO STAFF REVIEW AND APPROVAL.

1 Building Type VIb, Bldg. 8
Scale: 3/32" = 1'-0" Parking Elevation



2 Building Type VIb, Bldg. 8
Scale: 3/32" = 1'-0" Rear Elevation



3 Building Type VIb, bldg. 8
Scale: 3/32" = 1'-0" End Elevation

Revisions:

Date:	Description:

FDP Submittal

Village at View High

Lee's Summit, Missouri

A Residential Development by:

Cityscape
Residential

This drawing as an instrument of services, is and shall remain the property of SGN+A and shall not be reproduced, published or used in any way without permission of SGN+A, Inc.

Sheet Title:
Building Type VIb,
Building Elevations

Date:
12/20/2016

Sheet Number:

A20

Revisions:

Date:	Description:

FDP Submittal

Village at View High

Lee's Summit, Missouri

A Residential Development by:

Cityscape
Residential

This drawing as an instrument of services, is and shall remain the property of SGN+A and shall not be reproduced, published or used in any way without permission of SGN+A, Inc.

Sheet Title:
Building Type VII,
Building Elevations

Date:
12/20/2016

Sheet Number:

A21

Not Released for Construction



1 Building Type VII, Bldg. 17
Scale: 3/32" = 1'-0" Front Elevation (Parking Side)

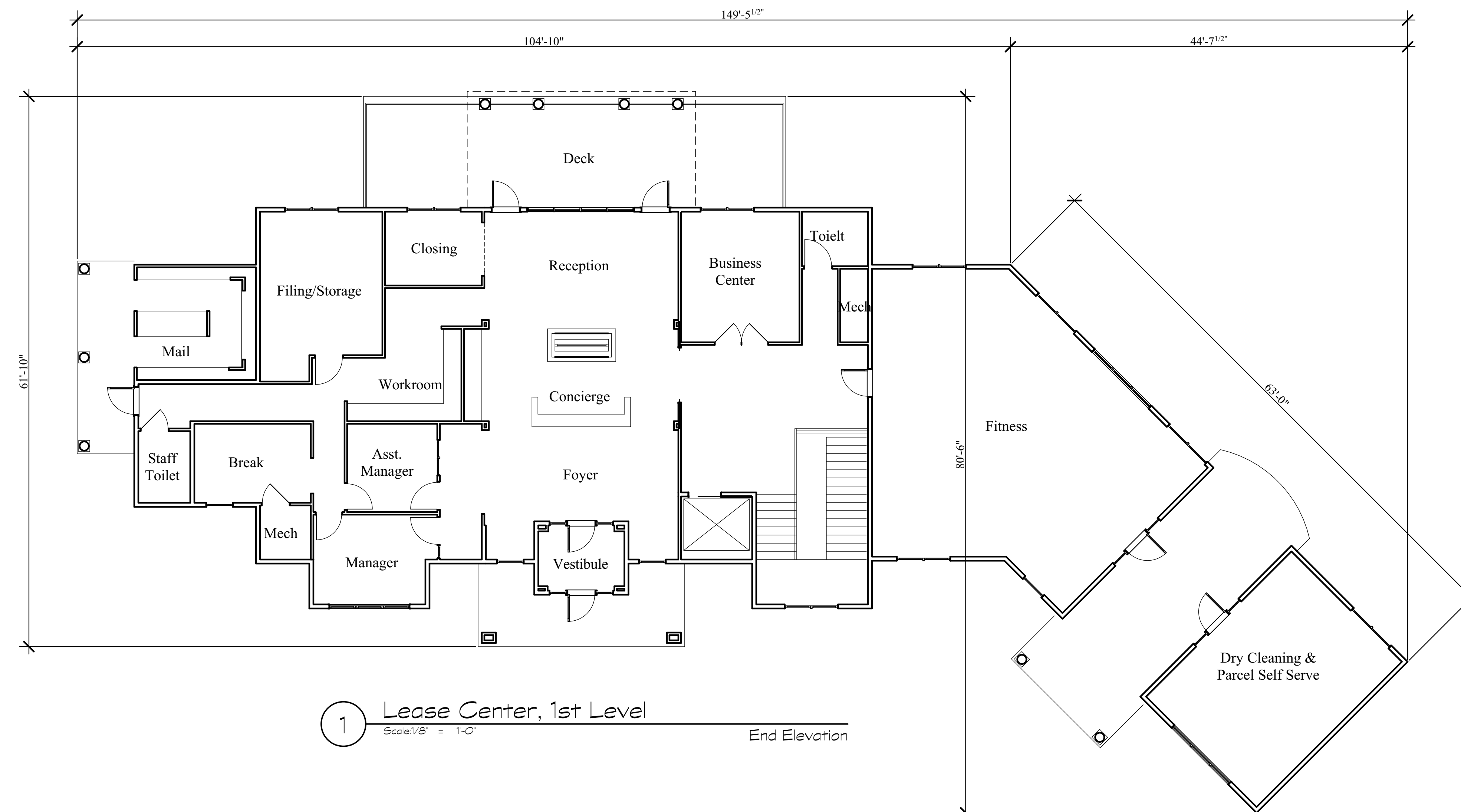


2 Building Type VII, Bldg. 17
Scale: 3/32" = 1'-0" Rear Elevation

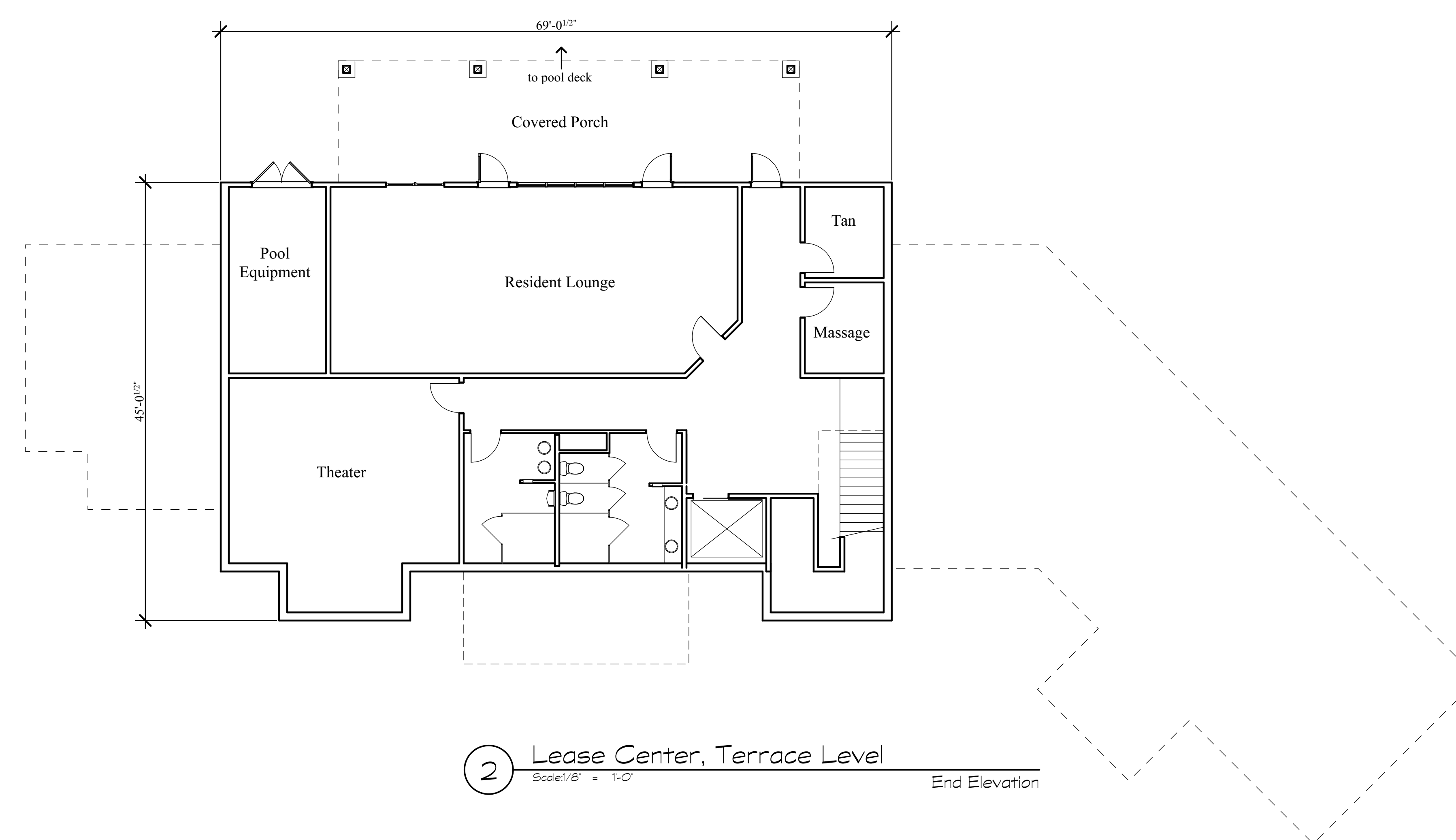


3 Building Type VII, Bldg. 17
Scale: 3/32" = 1'-0" End Elevation

NOTE: DEVELOPER RESERVES THE RIGHT TO USE A MODIFIED, REVERSED COLOR PALETTE ON UP TO 30% OF THE BUILDINGS, SUCH COLOR SCHEME SUBJECT TO STAFF REVIEW AND APPROVAL.



1 Lease Center, 1st Level
Scale: 1/8" = 1'-0" End Elevation



2 Lease Center, Terrace Level
Scale: 1/8" = 1'-0" End Elevation

Revisions:

Date:	Description:

FDP Submittal

Village at View High

Lee's Summit, Missouri

A Residential Development by:

Cityscape
Residential

This drawing as an instrument of services, is and shall remain the property of SGN+A and shall not be reproduced, published or used in any way without permission of SGN+A, Inc.

Sheet Title:
Lease Plans

Date:
12/19/2016

Sheet Number:

A22

Revisions:

Date:	Description:

FDP Submittal

Village at View High

Lee's Summit, Missouri

A Residential Development by:

Cityscape
Residential

This drawing as an instrument of services, is and shall remain the property of SGN+A and shall not be reproduced, published or used in any way without permission of SGN+A, Inc.

Sheet Title:
Lease Elevations

Date:
12/19/2016

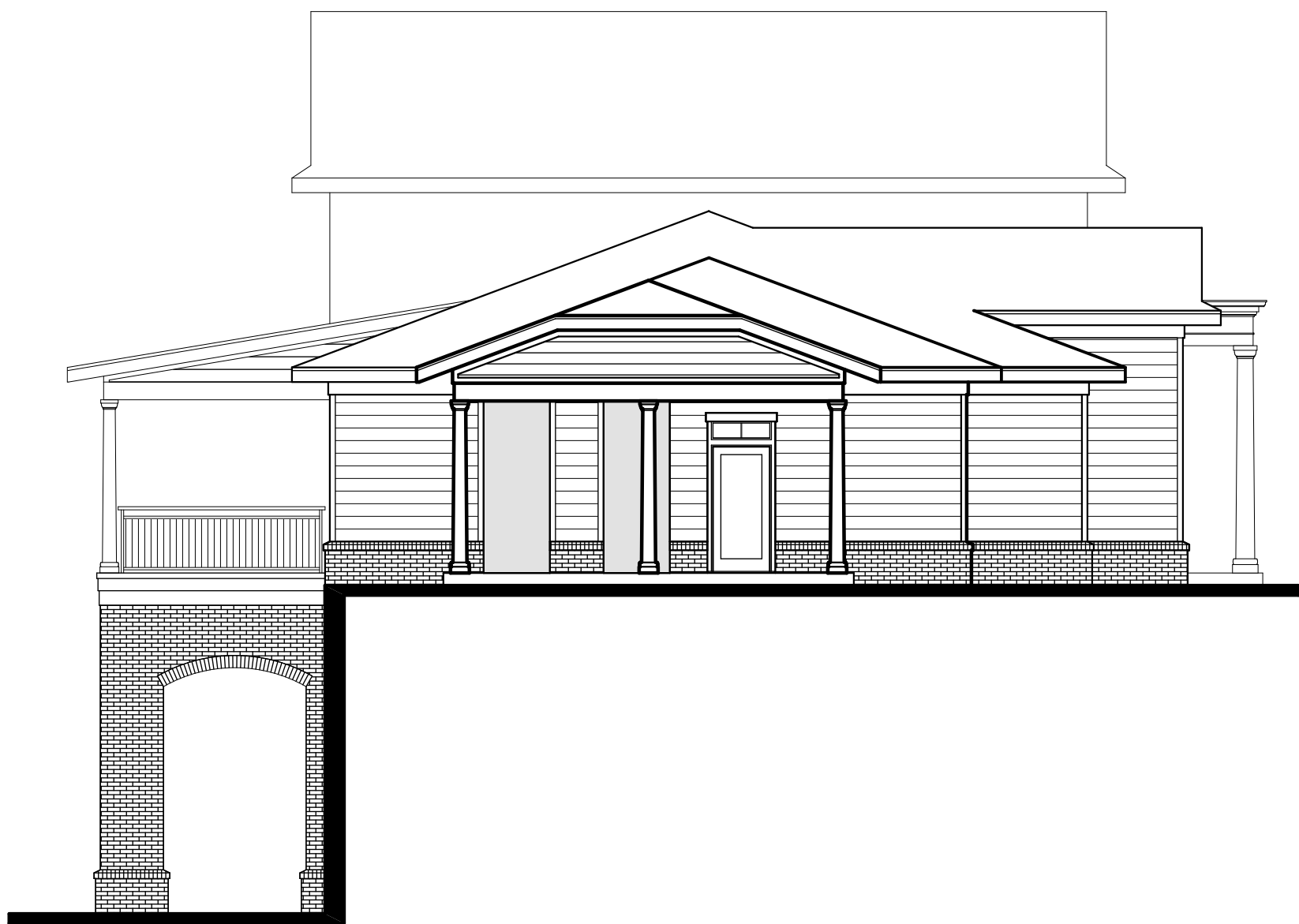
Sheet Number:

A23

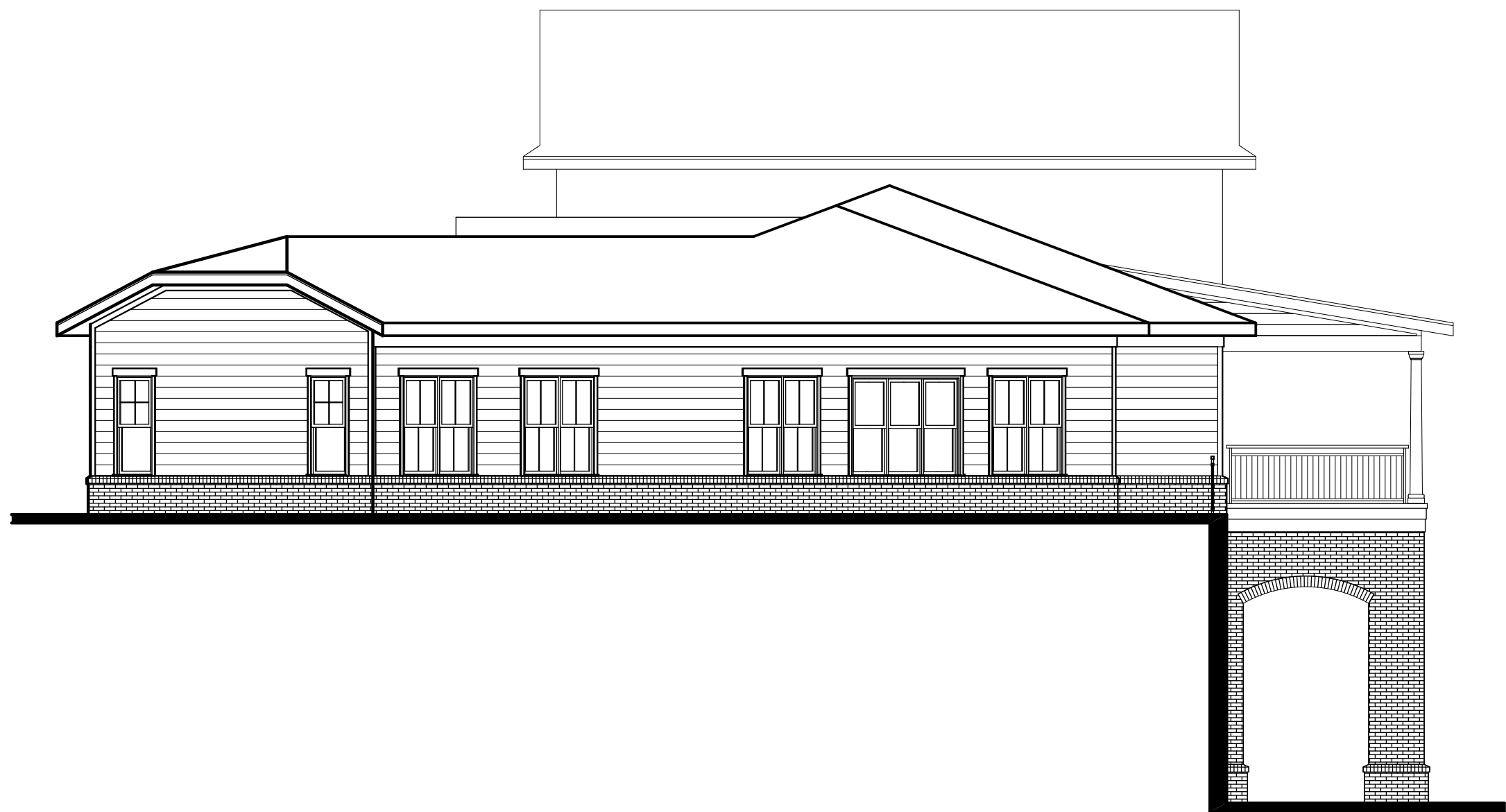
Not Released for Construction



1 Lease Center, Front Elevation
Scale: 1/8" = 1'-0"



2 Lease Center, Service Elevation
Scale: 1/8" = 1'-0"



3 Lease Center, Fitness Elevation
Scale: 1/8" = 1'-0"



4 Lease Center, Rear Elevation
Scale: 1/8" = 1'-0"

Revisions:

Date: Description:

1.27.17 1. FDP Responses

FDP Submittal

Village at
View High

Lee's Summit, Missouri

A Residential Development by:

Cityscape
Residential

This drawing as an instrument of
services, is and shall remain the
property of SGN+A and shall not
be reproduced, published or used
in any way without permission of
SGN+A, Inc.

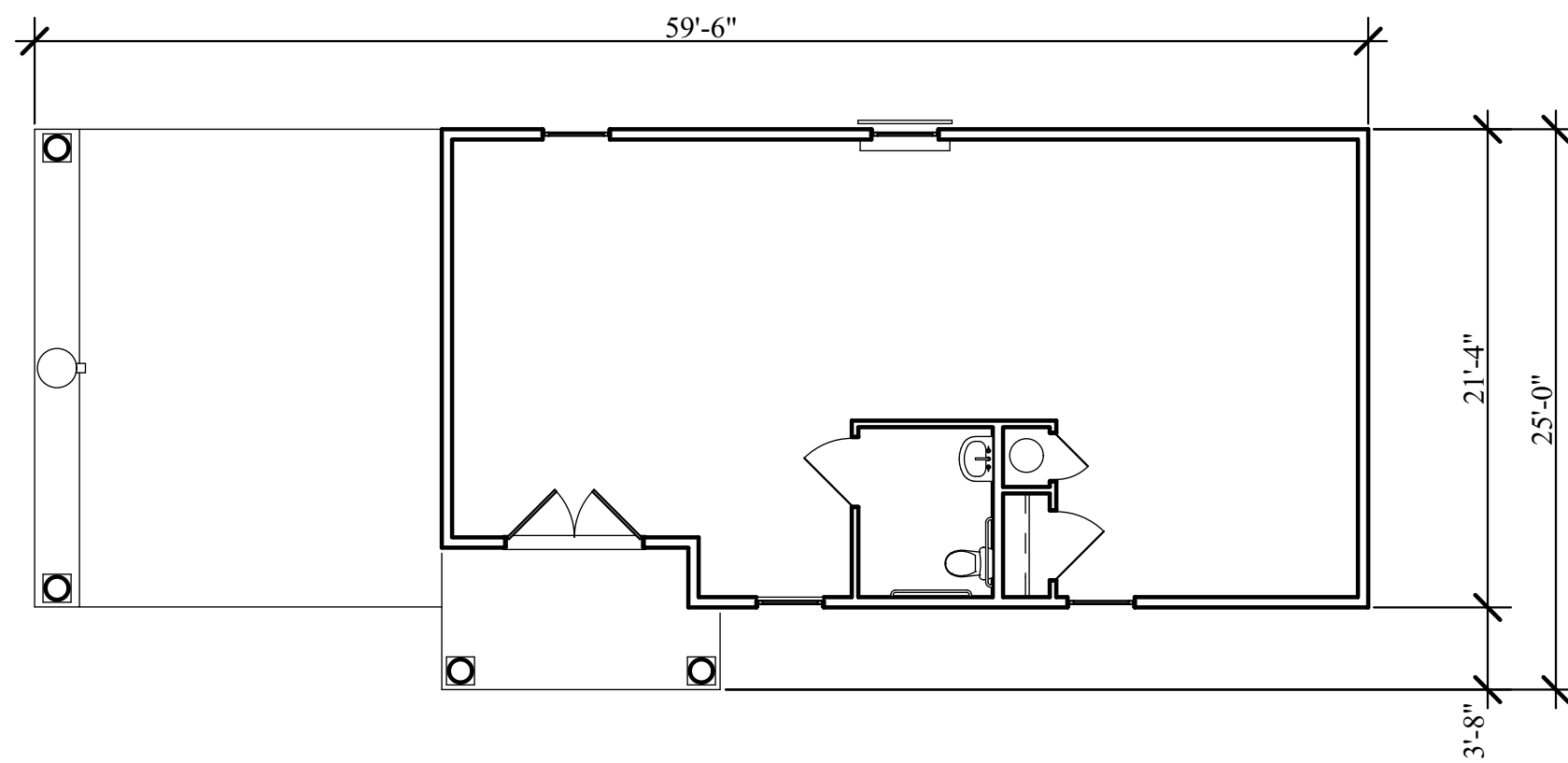
Sheet Title:
Maintenance Building
and Detached Garages

Date:
1/27/2017

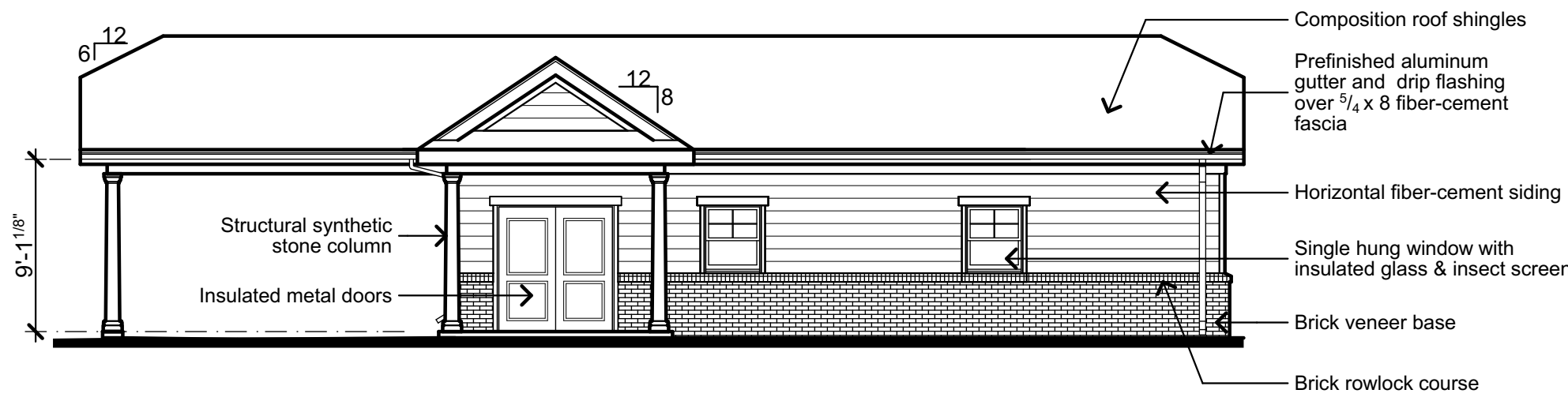
Sheet Number:

A24

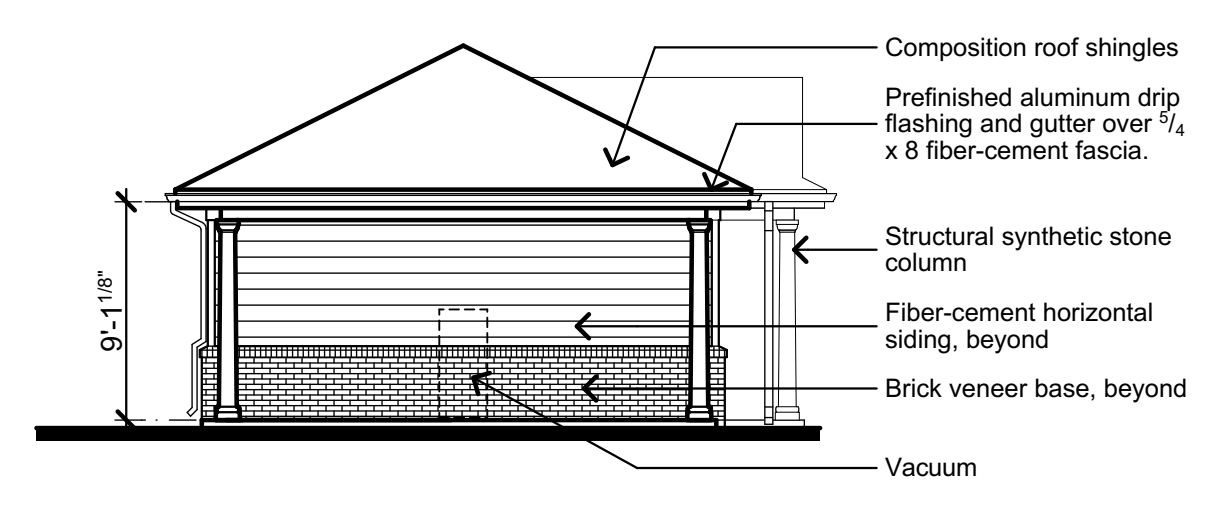
Not Released for Construction



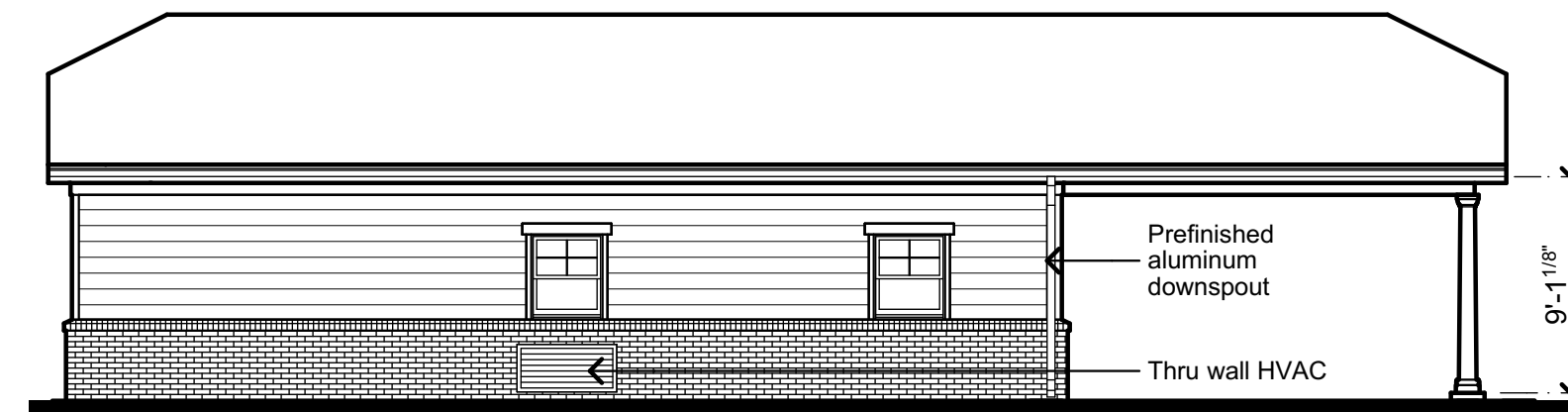
1 Maintenance Building, Plan
Scale: 1/8" = 1'-0"



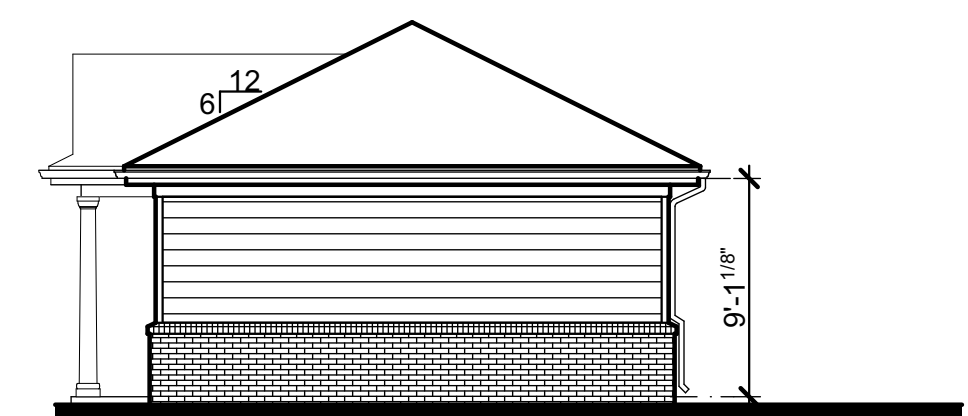
2 Maintenance Building, Front Elevation
Scale: 1/8" = 1'-0"



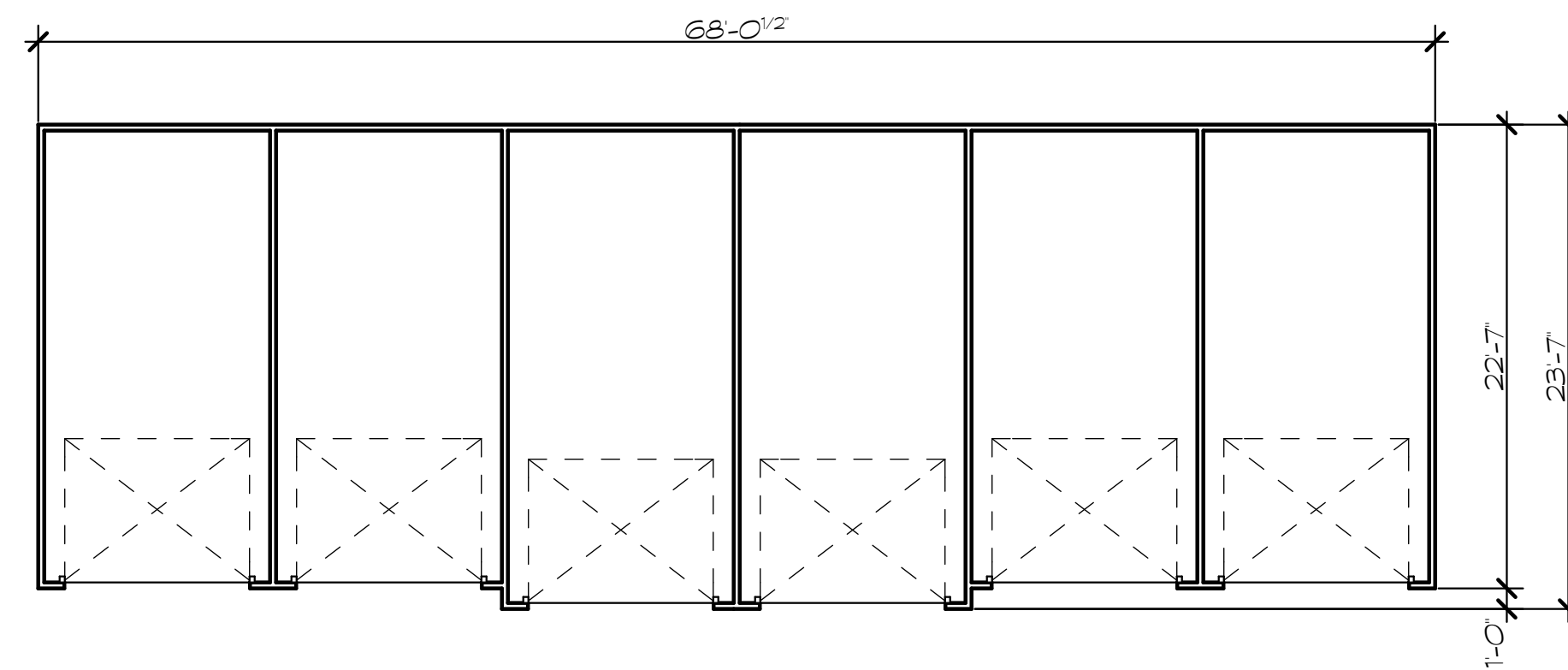
3 Maintenance, End Elevation
Scale: 1/8" = 1'-0"



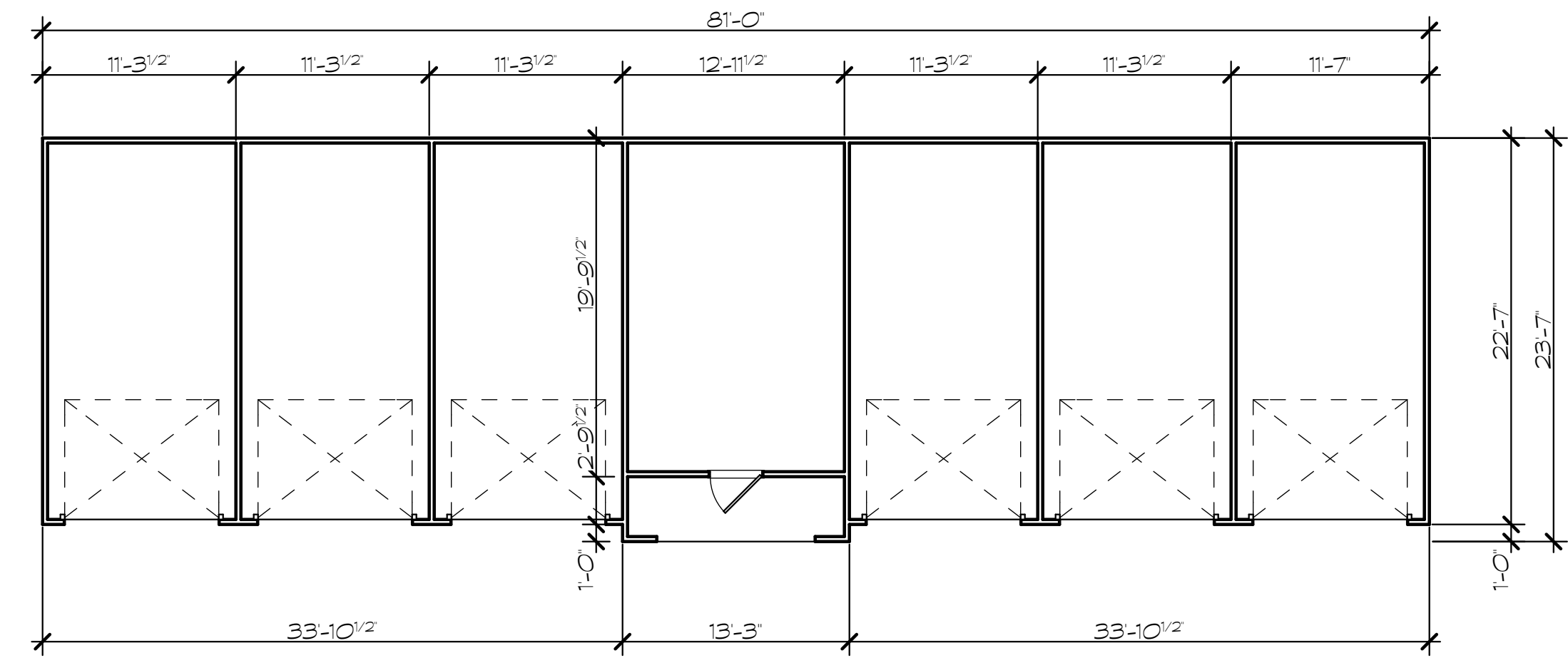
4 Maintenance Building, Rear Elevation
Scale: 1/8" = 1'-0"



5 Maintenance, End Elevation
Scale: 1/8" = 1'-0"



6 Detached Garage I, Plan
Scale: 1/8" = 1'-0"



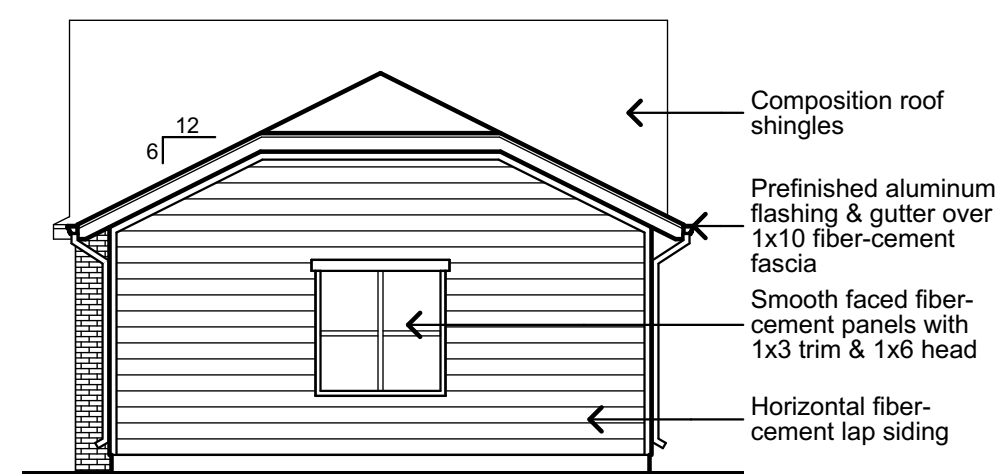
7 Detached Garage II, Plan
Scale: 1/8" = 1'-0"



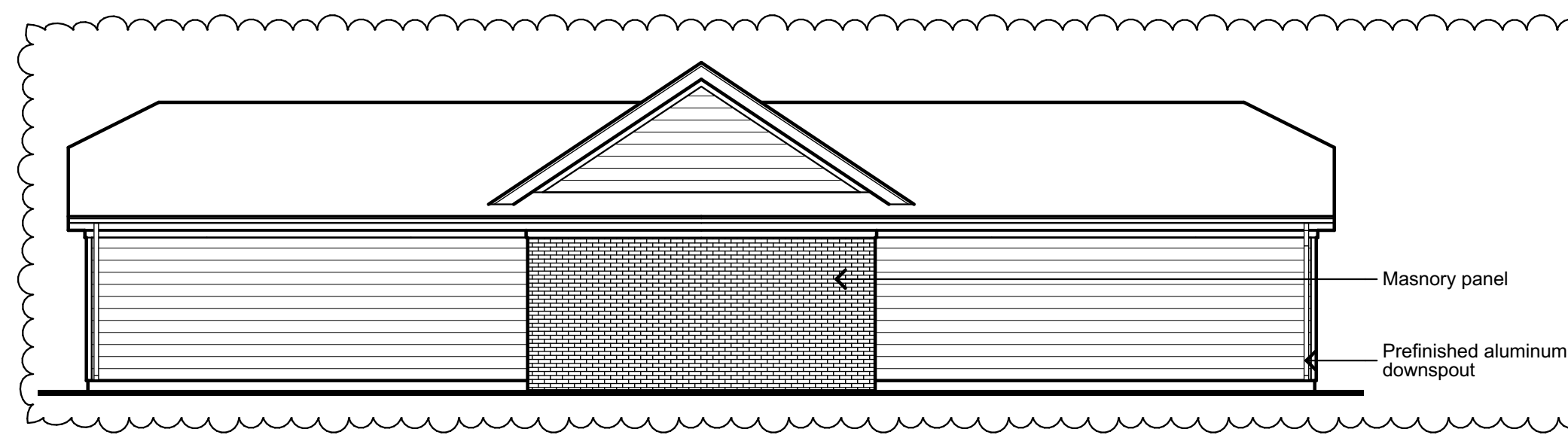
8 Detached Garage I, Front Elevation
Scale: 1/8" = 1'-0"



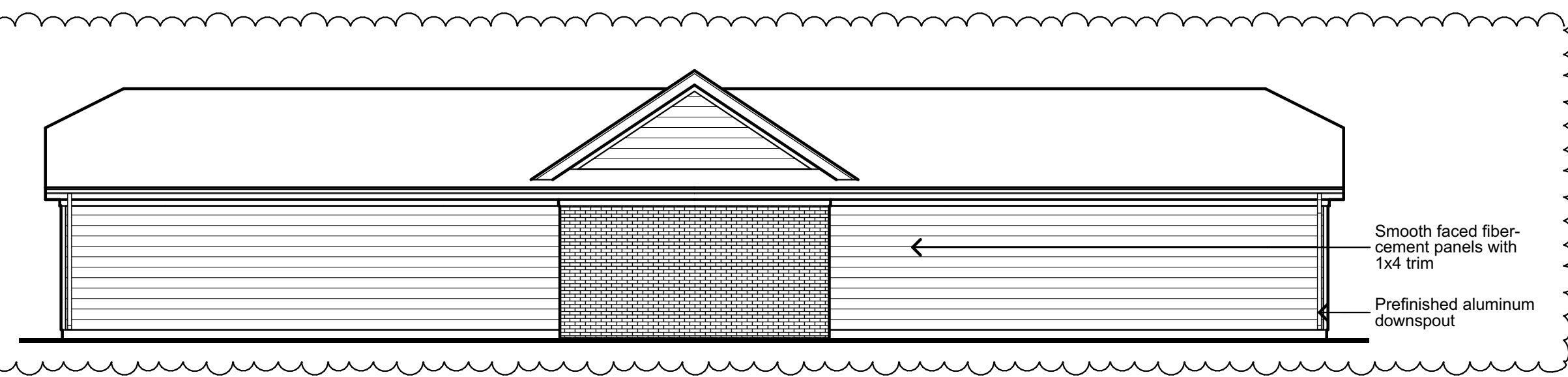
9 Detached Garage II, Front Elevation
Scale: 1/8" = 1'-0"



10 Detached Garages, End Elev.
Scale: 1/8" = 1'-0"



11 Detached Garage I, Rear Elevation
Scale: 1/8" = 1'-0"



12 Detached Garage II, Rear Elevation
Scale: 1/8" = 1'-0"

Revisions:

Date:	Description:

FDP Submittal

Village at View High

Lee's Summit, Missouri

A Residential Development by:

Cityscape
Residential

This drawing as an instrument of services, is and shall remain the property of SGN+A and shall not be reproduced, published or used in any way without permission of SGN+A, Inc.

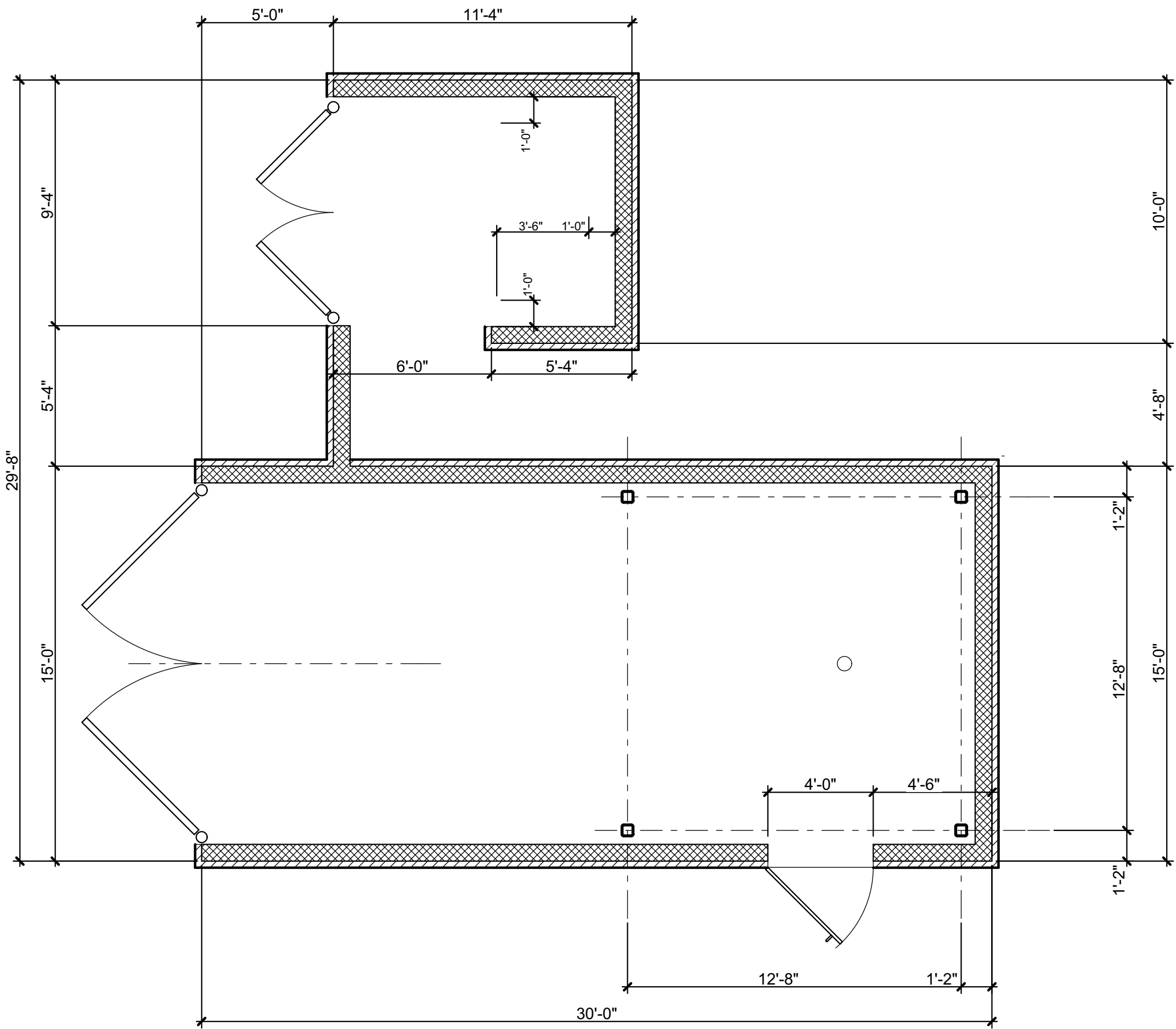
Sheet Title:
Trash Enclosure

Date:
12/19/2016

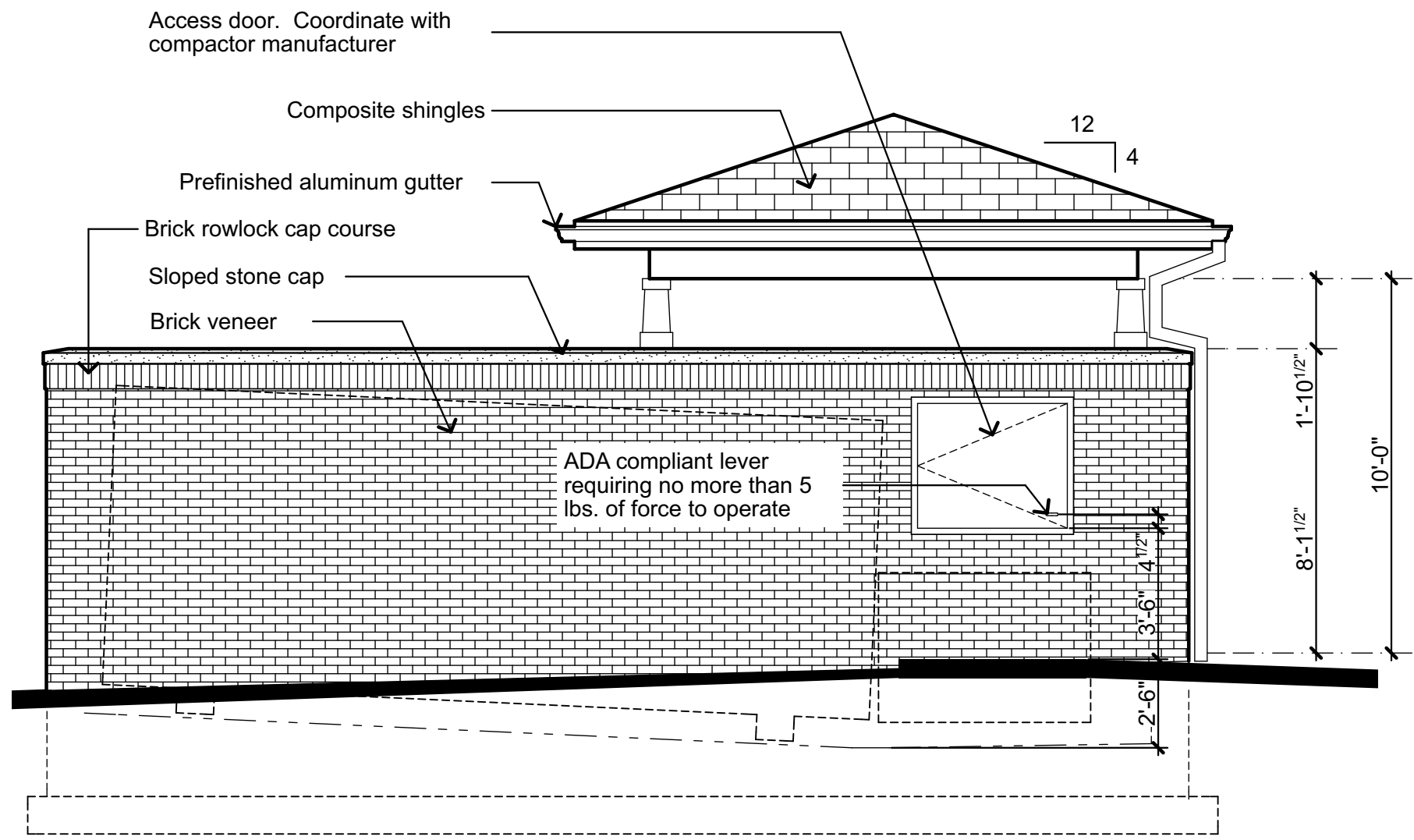
Sheet Number:

A25

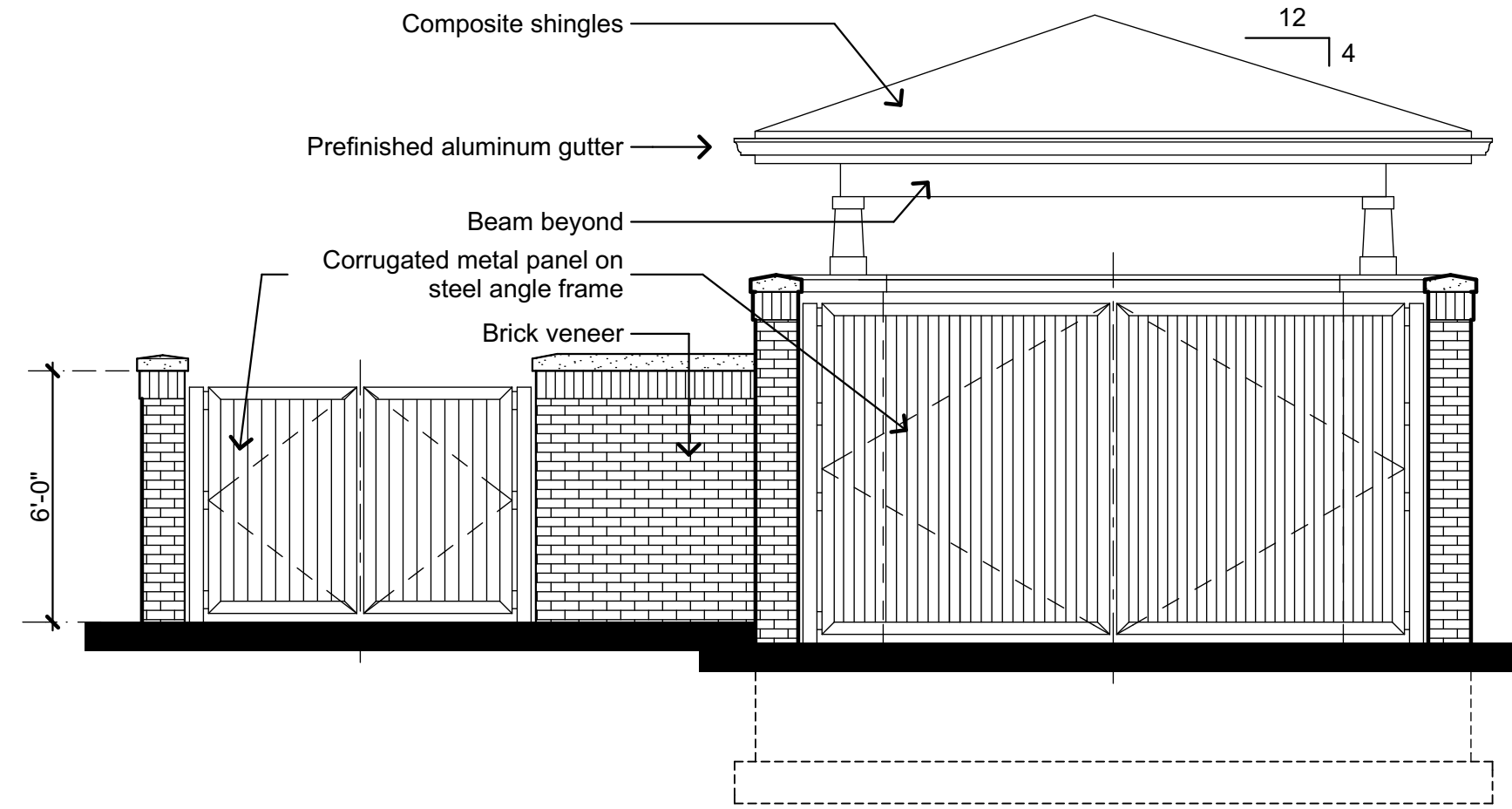
Not Released for Construction



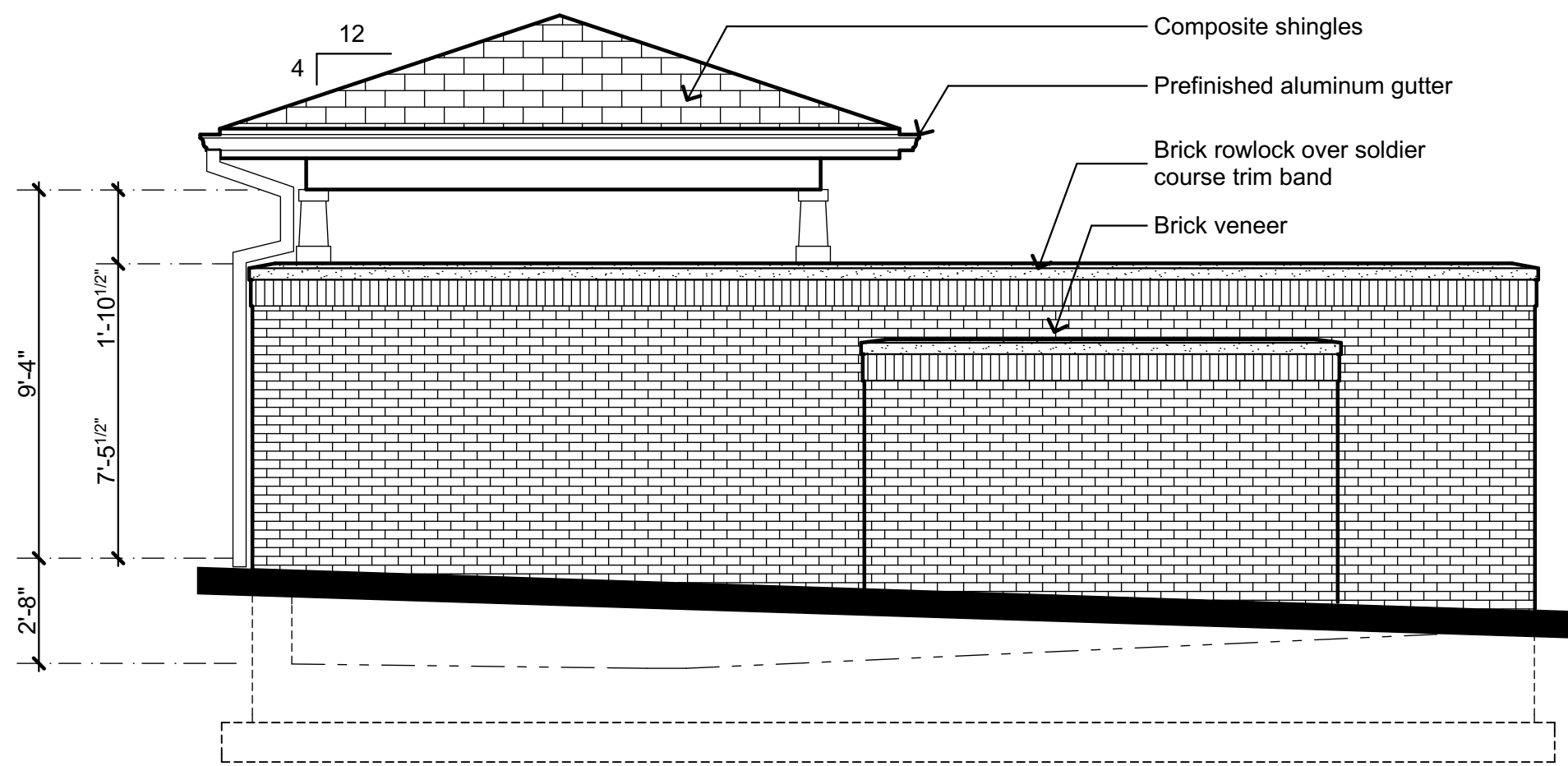
1 Trash Enclosure, Plan
Scale: 1/4" = 1'-0"



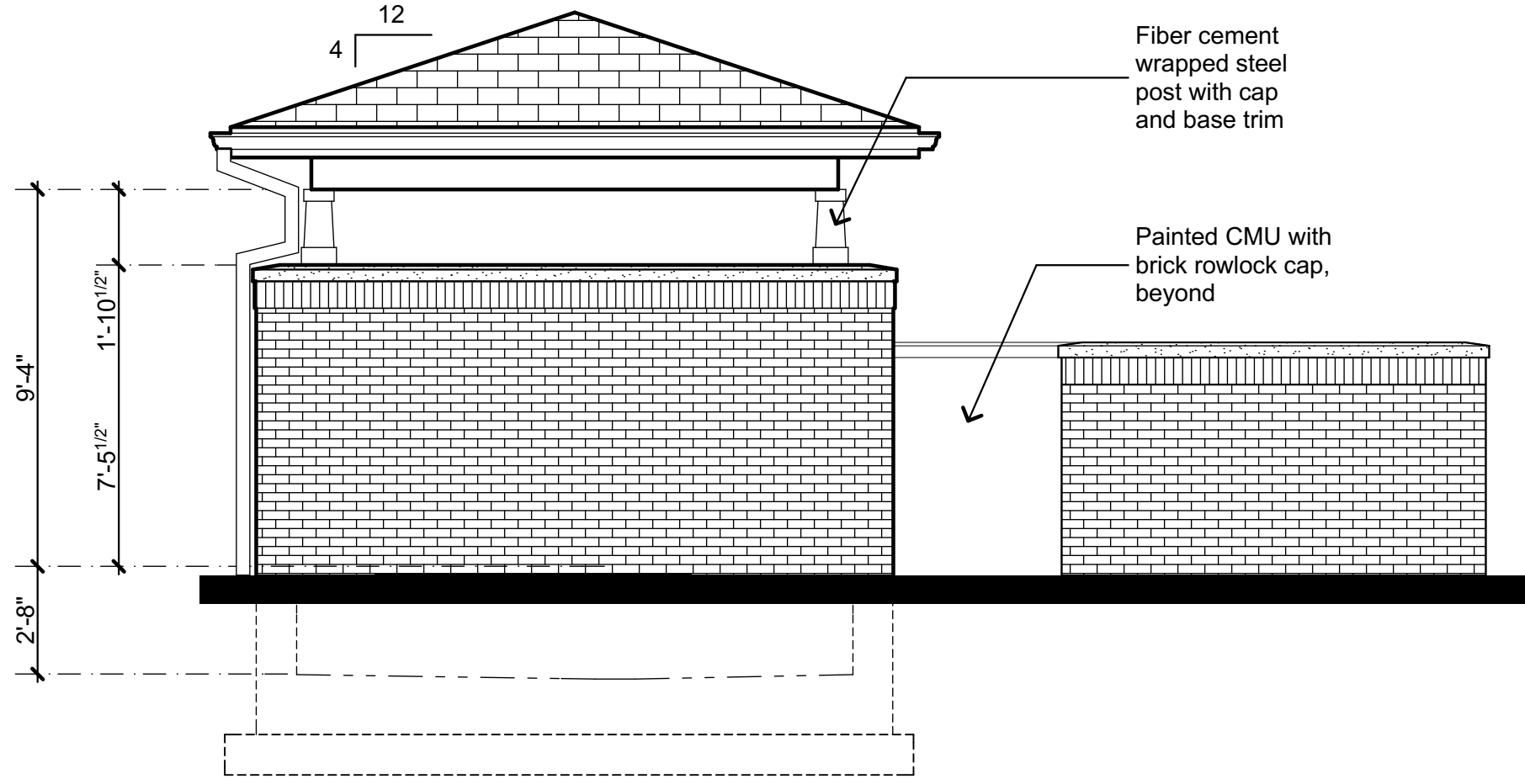
2 Trash Enclosure, Side Elevation
Scale: 1/4" = 1'-0"



3 Trash Enclosure, Front Elevation
Scale: 1/4" = 1'-0"



4 Trash Enclosure, Side Elevation
Scale: 1/4" = 1'-0"



5 Trash Enclosure, Rear Elevation
Scale: 1/4" = 1'-0"

Revisions:

Date:	Description:
1.27.17	1. FDP Responses

FDP Submittal

Village at
View High

Lee's Summit, Missouri

A Residential Development by:



This drawing as an instrument of services, is and shall remain the property of SGN+A and shall not be reproduced, published or used in any way without permission of SGN+A, Inc.

Sheet Title:
Rendered Elevations

Date:
1/27/2017

Sheet Number:

A26



Revisions:

Date: Description:

1.27.17 1. FDP Responses

FDP Submittal

Village at
View High

Lee's Summit, Missouri

A Residential Development by:

Cityscape
Residential

This drawing as an instrument of
services, is and shall remain the
property of SGN+A and shall not
be reproduced, published or used
in any way without permission of
SGN+A, Inc.

Sheet Title:
Alternate Color Palette
Locations

Date:

1/27/2017

Sheet Number:

A27

