

Revisions:

Date:	Description:
31 Aug 2016	Per city comments
22 Dec 2016	Per city comments
27 Jan 2017	Per city comments

PERMIT  
SUBMITTAL

Meridian at  
View High

Lee's Summit,  
Missouri

A Residential Development by

Cityscape  
Residential

This drawing as an instrument of  
services, is and shall remain the  
property of SGN+A and shall not  
be reproduced, published or used  
in any way without permission of  
SGN+A, Inc.

Sheet Title:  
LANDSCAPE  
PLAN

Date:  
22 July 2016

Sheet Number:

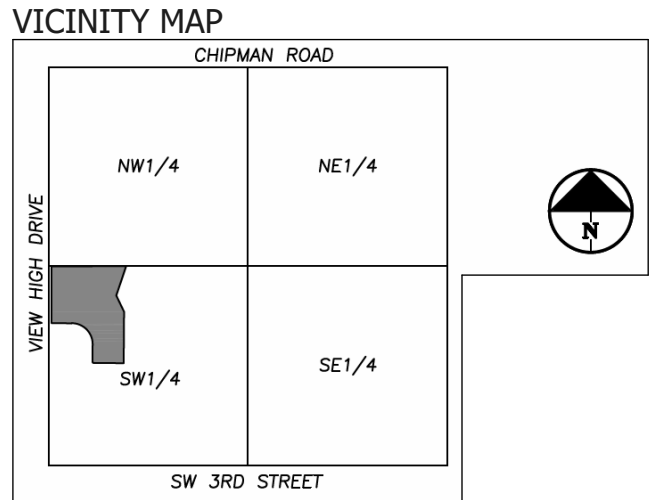
LS1

RELEASED FOR  
PERMITTING

PLANT LIST								
TREES					(Minimum at time of planting)			
QTY.	Plan Name	Common Name	Botanical Name	Container Size	Spacing (o.c.)	Height	Spread	Comments
15	DW	Dogwood	Kornus florida	3" cal.	see plan	8'	4'-5'	min. 3" clear trunk, matched
41	LE	Lacebark Elm	Ulmus parvifolia	3" cal.	see plan	8'	4'-5'	min. 3" clear trunk, matched
25	RB	Eastern Redbud	Cercis canadensis					
41	RM	Red Maple	Acer rubrum 'Autumn Glory'	3" cal.	see plan	8'	4'-5'	min. 3" clear trunk, matched
36	RO	Red Oak	Quercus rubra	3" cal.	see plan	8'	4'-5'	min. 3" clear trunk, matched
33	TP	Tulip Poplar	Liriodendron tulipifera	3" cal.	see plan	8'	4'-5'	min. 3" clear trunk, matched
15	WBJ	Witchita Blue Juniper	Juniperus scopulorum 'Witchita Blue'		see plan	8'	3'-4'	full to ground, no open areas
SHRUBS								
QTY.	Plan Name	Common Name	Botanical Name	Container Size	Spacing (O.C.)	Height	Spread	Comments
46	BB	Butterflybush	Buddleia davidii	3 gal.	42"	30"	24"	full to ground
134	SGJ	Seagreen Juniper	Juniperus chinensis 'Sea Green'	3 gal.	42"	30"	24"	well formed, even spread
143	VIB	Viburnum	Viburnum plicatum	3 gal.	42"	30"	24"	full to ground
104	WB	Common Winterberry	Ilex verticillata	3 gal.	42"	30"	24"	full to ground
53	YEW	Dense Spreading Yew	Taxus media x 'Densiformis'	3 gal.	42"	30"	24"	tight full to ground

SITE DATA	
SITE AREA (SF)	929,576
BUILDING FOOTPRINT COVERAGE (SF)	197,597
OPEN YARD AREA (SF)	731,979
2 SHRUBS REQUIRED FOR EVERY 5,000SF OF OPEN YARD AREA	
# OF SHRUBS REQUIRED	293
SHRUB REQUIREMENT MET, SEE PLANT LIST	
1 TREE REQUIRED FOR EVERY 5,000SF OF OPEN YARD AREA	
# OF TREES REQUIRED	146
TREE REQUIREMENT MET, SEE PLANT LIST	
PARKING LOT DATA	
PAVED PARKING LOT COVERAGE (SF)	264,065
MIN. 3% OF PAVED PARKING LOT AREA TO BE LANDSCAPE ISLANDS, STRIPS OR OTHER PLANTING AREAS (SF)	13,203
LANDSCAPE REQUIREMENT MET, SEE HATCHED AREAS ON PLAN	14,602

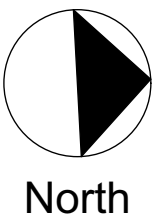
BUFFER DATA	
BUFFER 'A' LENGTH (FEET)	559
LANDSCAPE BUFFER WIDTH (FEET)	20
BUFFER SF	11,180
REQUIREMENTS (screen C)	
SHADE TREES (1/750 SF)	15
ORNAMENTAL TREES (1)	15
EVERGREEN TREES (1/200 SF)	15
SHRUBS (1/200 SF)	56



- NOTES
1. GROUNDCOVER SHALL BE UTILIZED ON SLOPES GREATER THAN 3:1.
  2. ALL OPEN AREAS NOT COVERED WITH OTHER MATERIALS SHALL BE COVERED WITH SOD.
  3. ALL PARKING BAYS INCLUDE LANDSCAPE ISLANDS AT EITHER END BETWEEN THE LAST PARKING SPACE AND ANY ADJACENT DRIVEWAY; ALL ISLANDS ARE A MINIMUM 9'-0" WIDE AND ARE PLANTED W/ GRASS AT A MINIMUM.
  4. ALL TREE PLANTING AREAS ARE A MINIMUM 10'-0" IN WIDTH, NO TREES ARE PLANTED CLOSER THAN 4'-0" TO BACK OF CURB
  5. ALL PARKING LOT LANDSCAPE ISLANDS ARE CURBED WITH MINIMUM 6" HIGH CURB.
  6. ADDITIONAL TREES, SHRUBS, GROUNDCOVER AND SOD SELECTIONS ARE NOT LIMITED TO PLANT LIST ABOVE; ALL ADDITIONAL PLANT MATERIAL SELECTED WILL BE ACCEPTABLE PER THE CLIMATE AND LOCATION OF PROPERTY AND WILL BE OF HIGH QUALITY MATERIAL.

TREE LEGEND	
	LACEBARK ELM
	RED MAPLE
	RED OAK
	TULIP POPLAR
	EASTERN REDBUD
	WITCHITA BLUE JUNIPER
	DOGWOOD

0' 25' 50' 100'  
Scale: 1" = 50'-0"



Revisions:

Date:	Description:
31 Aug 2016	Per city comments

PERMIT  
SUBMITTAL

Meridian at  
View High

Lee's Summit,  
Missouri

A Residential Development by  
**Cityscape**  
Residential

This drawing as an instrument of  
services, is and shall remain the  
property of SGN+A and shall not  
be reproduced, published or used  
in any way without permission of  
SGN+A, Inc.

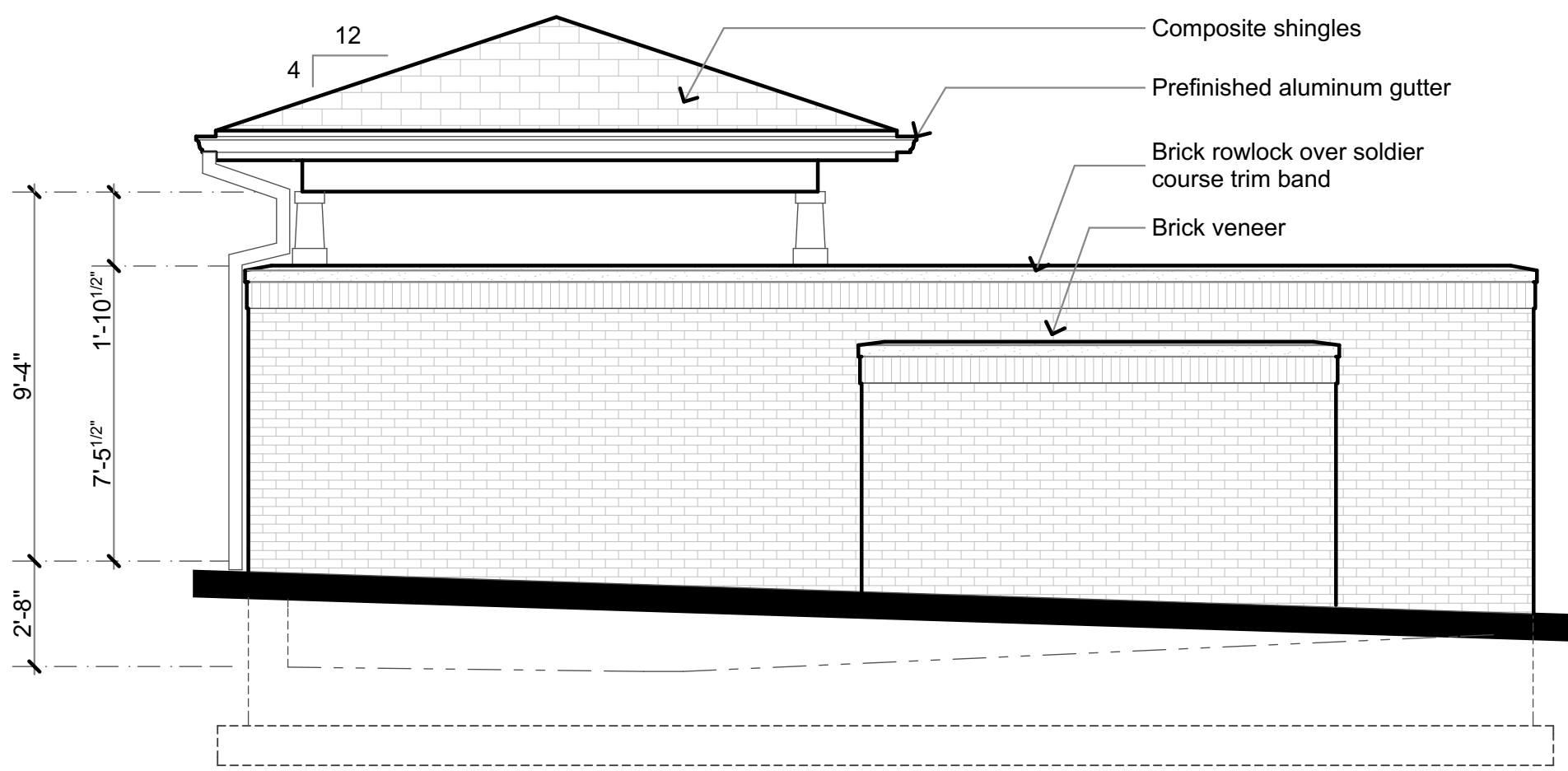
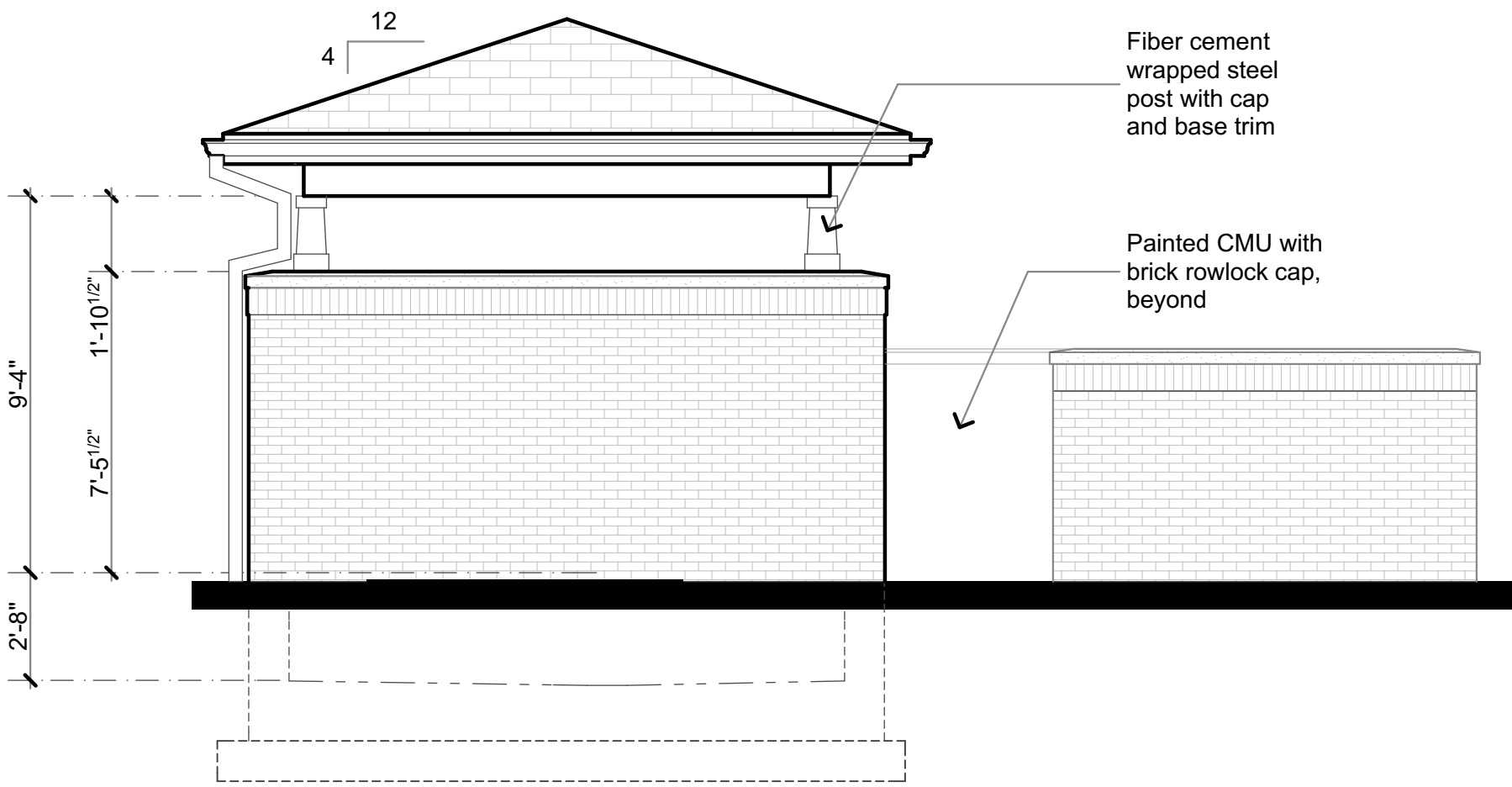
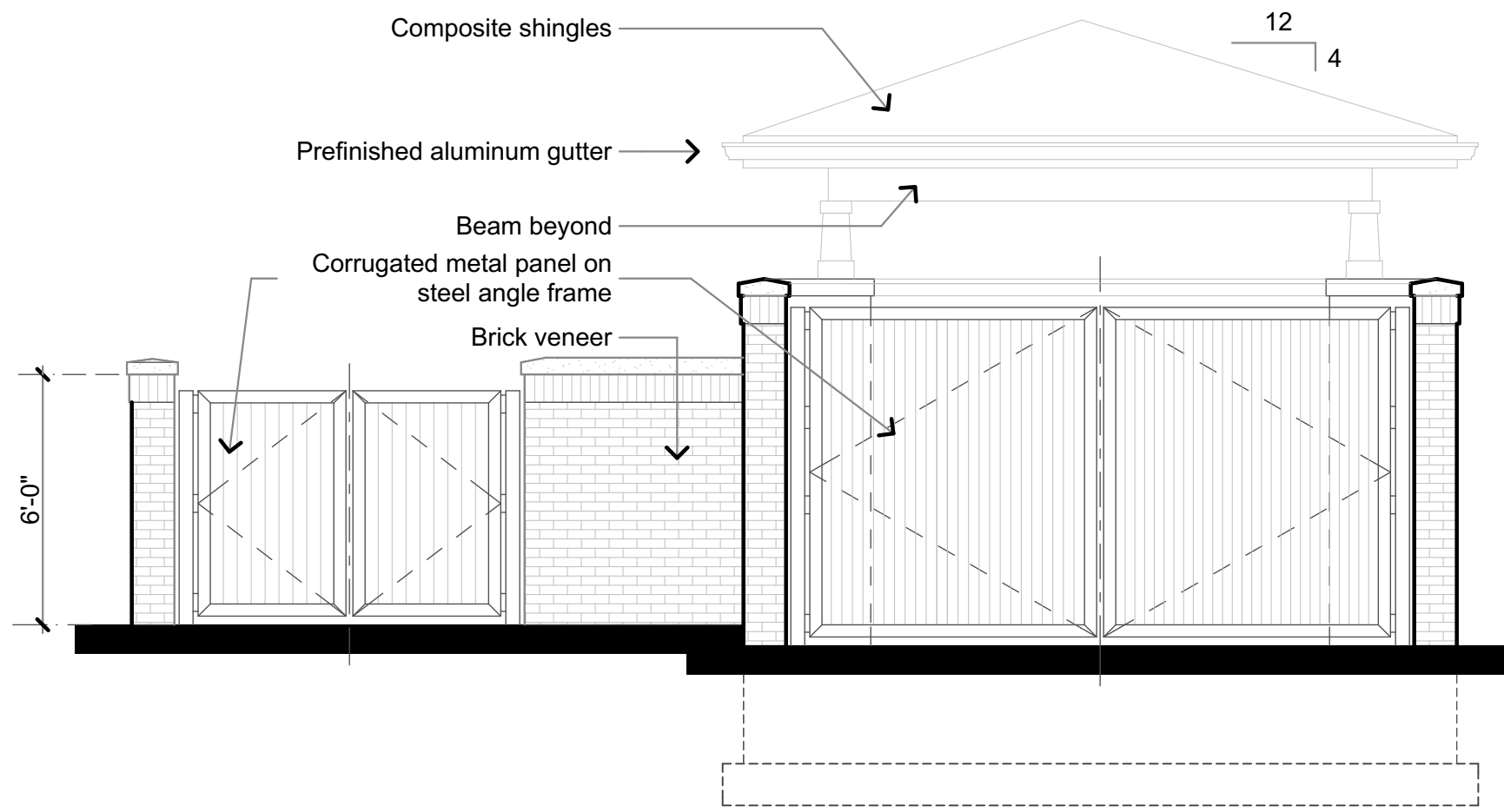
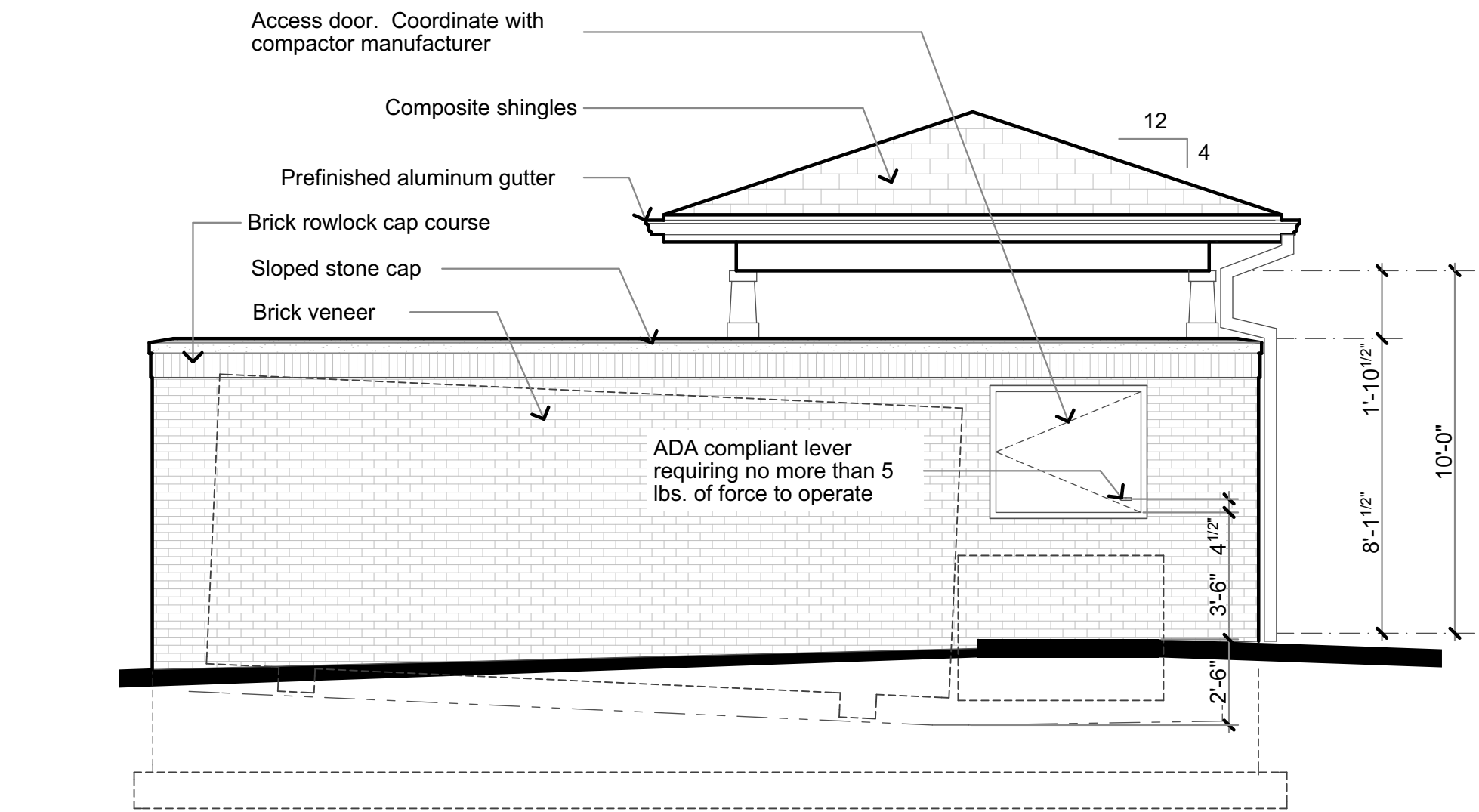
Sheet Title:  
LANDSCAPE  
PLAN

Date:  
22 July 2016

Sheet Number:

LS2

RELEASED FOR  
PERMITTING



1 Trash Enclosure Elevations

SCALE: 1/4" = 1'-0"



Revisions:

Date: Description:


Preliminary  
Design Concepts

Apartments -  
Village at View  
High

Lee's Summit, Missouri

A Residential Development by:




This drawing as an instrument of services, is and shall remain the property of SGN+A and shall not be reproduced, published or used in any way without permission of SGN+A, Inc.

Sheet Title:  
LEGENDS, NOTES,  
DETAILS, &  
SCHEDULES

Date:  
8/30/2016

Sheet Number:



**D-Series Size 1  
LED Area Luminaire**

**d'series**

**Specifications**  
EPA: 1.01 ft<sup>2</sup> (0.09 m<sup>2</sup>)  
Length: 33" (83.8 cm)  
Width: 13" (33.0 cm)  
Height: 7-1/2" (19.0 cm)  
Weight (max): 27 lbs (12.3 kg)

**Introduction**  
The modern styling of the D-Series is striking yet unobtrusive - making a bold, progressive statement even as it blends seamlessly with its environment.  
The D-Series distills the benefits of the latest in LED technology into a high performance, high efficacy, long-life luminaire. The outstanding photometric performance results in sites with excellent uniformity, greater pole spacing and lower power density. It is ideal for replacing up to 750W metal halide in pedestrian and area lighting applications with typical energy savings of 65% and expected service life of over 100,000 hours.

**Ordering Information**

**EXAMPLE: DSX1 LED 60C 1000 40K T3M MVOLT SPA DDBXD**

Series	LEDs	Drive current	Color temperature	Distribution	Voltage	Mounting
DSX1 LED	<b>Forward optics</b> 30C 30 LEDs (one engine) 40C 40 LEDs (two engines) 60 LEDs (two engines) <b>Rotated optics</b> <sup>1</sup> 60 LEDs (two engines)	530 530 mA 700 700 mA 1000 1000 mA (1 A) <sup>2</sup>	30K 3000 K 40K 4000 K 50K 5000 K AMBPC Amber phosphor converted	T15 Type I short T25 Type II short T2M Type II medium T3S Type II short T3M Type II medium T4M Type IV medium TFTM Forward Throw medium TSVS Type V very short	T15 Type I short T25 Type II short T2M Type V medium TSW Type V wide BLC Backlight control <sup>14</sup> LCCO Left corner cutoff <sup>14</sup> RCCO Right corner cutoff <sup>14</sup>	MVOLT <sup>1</sup> SPA Square pole mounting RPA Round pole mounting WBA Wall basket SPUMBA Square pole universal mounting adaptor <sup>3</sup> RPMBA Round pole universal mounting adaptor <sup>3</sup> KMA8 DDBXD II Mast arm mounting bracket adaptor (specify finish) <sup>4</sup>


**Accessories**

**Controls & Shields**  
DL127N 1.5 ft Photostat - SL twin lock (120-277V)<sup>1</sup>  
DL140N 1.5 ft Photostat - SL twin lock (120V)<sup>1</sup>  
DL140N 1.5 ft SL II Photostat - SL twin lock (480V)<sup>1</sup>  
DSXMT 38D Starting cap<sup>7</sup>  
DSXMC 30C House-side shield for 30 LED unit<sup>8</sup>  
DSXMC 40C House-side shield for 40 LED unit<sup>8</sup>  
DSXMC 60C House-side shield for 60 LED unit<sup>8</sup>  
DSXMC 60C House-side shield for 60 LED unit<sup>8</sup>  
KMA100BD II Splice and mount pole universal mounting bracket (specify finish)<sup>4</sup>  
KMA100BD II Mast arm mounting bracket adaptor (specify finish)<sup>4</sup>  
DSXN100 Bid spikes

**NOTES**  
1. Rotated optics available with 40C only.  
2. Not available AMBPC.  
3. Only available with 120V or 720V.  
4. KMA8 DDBXD II requires 120-277V (50/60 Hz). Specify 120V, 208V, 240V or 277V options only when ordering with fusing (SF, DF options).  
5. MVOLT driver operates on any line voltage from 120-277V (50/60 Hz). Specify 120V, 208V, 240V or 277V options only when ordering with fusing (SF, DF options).  
6. Not available with single level, T3M product (30C, 33C or 40C, 33C, 40C). Not available with BLC, LCCO or RCCO options.  
7. Starting cap only. Available as a separate combination accessory for retrofit use only. (ALBA Series) 1.5 ft. 1.5 ft. vibration load rating per ANSI C136.3.  
8. House-side shield only. Available as a separate combination accessory. See Accessories Information. For use with 2-3/8" mast arm (not included).  
9. Photostat ordered and shipped as a separate line item from Acuity Brands Controls. See accessories. Not available with DS options.  
10. DSMT not required. It must be ordered and shipped as a separate line item from Acuity Brands Controls.  
11. DSMT not required. It must be ordered and shipped as a separate line item from Acuity Brands Controls.  
12. DSMT not required. It must be ordered and shipped as a separate line item from Acuity Brands Controls.  
13. DSMT not required. It must be ordered and shipped as a separate line item from Acuity Brands Controls.  
14. DSMT not required. It must be ordered and shipped as a separate line item from Acuity Brands Controls.  
15. DSMT not required. It must be ordered and shipped as a separate line item from Acuity Brands Controls.  
16. DSMT not required. It must be ordered and shipped as a separate line item from Acuity Brands Controls.  
17. DSMT not required. It must be ordered and shipped as a separate line item from Acuity Brands Controls.  
18. DSMT not required. It must be ordered and shipped as a separate line item from Acuity Brands Controls.  
19. DSMT not required. It must be ordered and shipped as a separate line item from Acuity Brands Controls.  
20. DSMT not required. It must be ordered and shipped as a separate line item from Acuity Brands Controls.  
21. DSMT not required. It must be ordered and shipped as a separate line item from Acuity Brands Controls.  
22. DSMT not required. It must be ordered and shipped as a separate line item from Acuity Brands Controls.  
23. DSMT not required. It must be ordered and shipped as a separate line item from Acuity Brands Controls.  
24. DSMT not required. It must be ordered and shipped as a separate line item from Acuity Brands Controls.  
25. DSMT not required. It must be ordered and shipped as a separate line item from Acuity Brands Controls.

One Lithonia Way • Conyers, Georgia 30012 • Phone: 800.279.8041 • www.lithonia.com  
© 2011-2016 Acuity Brands Lighting, Inc. All rights reserved.

DSX1 LED Rev. 08/09/16 Page 1 of 6



**D-Series Size 1  
LED Wall Luminaire**

**d'series**

**Specifications Luminaire**  
Width: 13-3/4" (34.9 cm)  
Depth: 10" (25.4 cm)  
Height: 6-3/8" (16.2 cm)

**Back Box (BBW, ELCW)**  
Width: 13-3/4" (34.9 cm)  
Depth: 4" (10.2 cm)  
Height: 6-3/8" (16.2 cm)

**Weight:** 5 lbs (2.3 kg)  
**Weight:** 10 lbs (4.5 kg)

**Introduction**  
The D-Series Wall Luminaire is a stylish, fully integrated LED solution for building-mount applications. It features a sleek, modern design and is carefully engineered to provide long-lasting, energy-efficient lighting with a variety of optical and control options for customized performance.  
With an expected service life of over 20 years of nighttime use and up to 74% in energy savings over comparable 250W metal halide luminaires, the D-Series Wall is a reliable, low-maintenance lighting solution that produces sites that are exceptionally illuminated.

**Ordering Information**

**EXAMPLE: DSXW1 LED 20C 1000 40K T3M MVOLT DDBTXD**

Series	LEDs	Drive Current	Color Temperature	Distribution	Voltage	Mounting	Control Options
DSXW1 LED	<b>DSXW1 LED</b> 10C 10 LEDs (one engine) 20C 20 LEDs (two engines)	350 350 mA 530 530 mA 700 700 mA 1000 1000 mA (1 A)	30K 3000 K 40K 4000 K 50K 5000 K AMBPC Amber phosphor converted	T25 Type II Short T2M Type II Medium T3S Type II Short T3M Type II Medium T4M Type IV Medium TFTM Forward Throw Medium ASYDF Asymmetric diffuse	MVOLT <sup>1</sup> 120 <sup>1</sup> 208 <sup>1</sup> 240 <sup>1</sup> 277 <sup>1</sup> 347 <sup>1</sup> 480 <sup>1</sup>	<b>Shipped included</b> (blank) Surface mounting bracket BSW Surface-mounted back box (for conduit entry) BBW Back box (for conduit entry) ELCW Emergency battery backup (includes external component enclosure) <sup>3</sup>	<b>Shipped installed</b> PE Photometric cell, button type <sup>4</sup> DMG 0-10V dimming driver (no controls) PIR 180° motion/ambient light sensor, <15 mg ft <sup>-1</sup> PIRH 180° motion/ambient light sensor, 15-30 mg ft <sup>-1</sup> PIRHCV Motion/ambient light sensor, 15-30 mounting height, ambient sensor enabled at 16" PIRHCV Motion/ambient sensor, 15-30 mounting height, ambient sensor enabled at 16" ELCW Emergency battery backup (includes external component enclosure) <sup>3</sup>

**Accessories**

**Other Options**  
Shipped installed  
SF Single fuse (120, 277 or 347V)<sup>1</sup>  
DF Double fuse (208, 240 or 480V)<sup>1</sup>  
HS House-side shield<sup>8</sup>  
SPD Separate surge protection<sup>1</sup>


**Shipped separately**  
BSW Bid-direction spikes  
WG Wire guard  
VG Vandal guard  
DDL Diffused drop lens

**NOTES**  
1. MVOLT driver operates on any line voltage from 120-277V (50/60 Hz). Specify 120, 208, 240 or 277 options only when ordering with fusing (SF, DF options), or photocontrol (PE option).  
2. Only available with 20C, 700mA or 1000mA. Not available with PIR or PIRH.  
3. Back box also installed on fixture. Cannot be field installed. Cannot be ordered as an accessory.  
4. Photocontrol (PE) requires 120, 208, 240, 277 or 347 voltage option. Not available with motion/ambient light sensor (PIR or PIRH).  
5. PIR and PIRHCV specifies the Sensor Switch (SS) 120-277V control. PIRH specifies the Sensor Switch (SS) 120-277V control. See Motion Sensor Guide for details. Includes ambient light sensor. Not available with "TFC" option (button type photocontrol). Dimming driver standard. Not available with 20 LED/1000 mA configuration (DSXW1 LED 20C 1000).  
6. Cold weather (20C) used. Not compatible with conduit entry applications. Not available with BBW mounting option. Not available with fusing, 120 or 480 voltage options. Emergency components located in back box housing. Emergency mode IES files located on product page at: www.lithonia.com  
7. Single fuse (SF) requires 120, 277 or 347 voltage option. Double fuse (DF) requires 208, 240 or 480 voltage option. Not available with ELCW.  
8. Also available as a separate accessory; see Accessories Information.  
9. See the electrical section on page 1 for more details.

One Lithonia Way • Conyers, Georgia 30012 • Phone: 800.279.8041 • www.lithonia.com  
© 2011-2016 Acuity Brands Lighting, Inc. All rights reserved.

LIGHTING FIXTURE SCHEDULE				
TYPE	DESCRIPTION	MANUFACTURER/MODEL	LAMPS	NOTES
G	EXTERIOR WALL MOUNT FIXTURE.	DESIGN HOUSE MASON 519504	13W LED LAMP IN LIEU OF A19 INCANDESCENT BULB	10'-0" MOUNTING HEIGHT
SA	DSX1 LED WITH 30 LEDs @ 1000 MA , 4000K , TYPE 2 MEDIUM OPTICS	LITHONIA LIGHTING DSX1 LED 30C 1000 40K T2M	105W LED	REFER TO DRAWINGS FOR MOUNTING HEIGHT
SB	DSX1 LED WITH 30 LEDs @ 1000 MA , 4000K , TYPE 3 MEDIUM OPTICS	LITHONIA LIGHTING DSX1 LED 30C 1000 40K T3M	105W LED	REFER TO DRAWINGS FOR MOUNTING HEIGHT
SC	DSX1 LED WITH 30 LEDs @ 1000 MA , 4000K , TYPE 4 MEDIUM OPTICS	LITHONIA LIGHTING DSX1 LED 30C 1000 40K T4M	105W LED	REFER TO DRAWINGS FOR MOUNTING HEIGHT
SD	DSX1 LED WITH 30 LEDs @ 1000 MA , 4000K , TYPE 5 MEDIUM OPTICS	LITHONIA LIGHTING DSX1 LED 30C 1000 40K T5M	105W LED	REFER TO DRAWINGS FOR MOUNTING HEIGHT
SE	DSX1 LED WITH 30 LEDs @ 1000 MA , 4000K , TYPE 2 MEDIUM OPTICS WITH HOUSE- SIDE SHIELD	LITHONIA LIGHTING DSX1 LED 30C 1000 40K T2M HS	105W LED	REFER TO DRAWINGS FOR MOUNTING HEIGHT
SF	DSX1 LED WITH 30 LEDs @ 1000 MA , 4000K , TYPE 4 MEDIUM OPTICS WITH HOUSE- SIDE SHIELD	LITHONIA LIGHTING DSX1 LED 30C 1000 40K T4M HS	105W LED	REFER TO DRAWINGS FOR MOUNTING HEIGHT
SG	DSX1 LED WITH 30 LEDs @ 1000 MA , 4000K , TYPE FORWARD THROW MEDIUM OPTICS	LITHONIA LIGHTING DSX1 LED 30C 1000 40K TFTM	105W LED	REFER TO DRAWINGS FOR MOUNTING HEIGHT
WP	DSXW1 LED WITH (2) 10 LED LIGHT ENGINES, TYPE T4M OPTIC, 4000K, @ 700MA.	LITHONIA LIGHTING DSXW1 LED 20C 700 40K T4M	45W LED	15'-0" MOUNTING HEIGHT


NOTE: ALL LIGHTING POLES SHALL BE DIRECT BURY. COORDINATE REQUIRED DEPTH OF POLE BASE WITH FIXTURE MOUNTING HEIGHT.



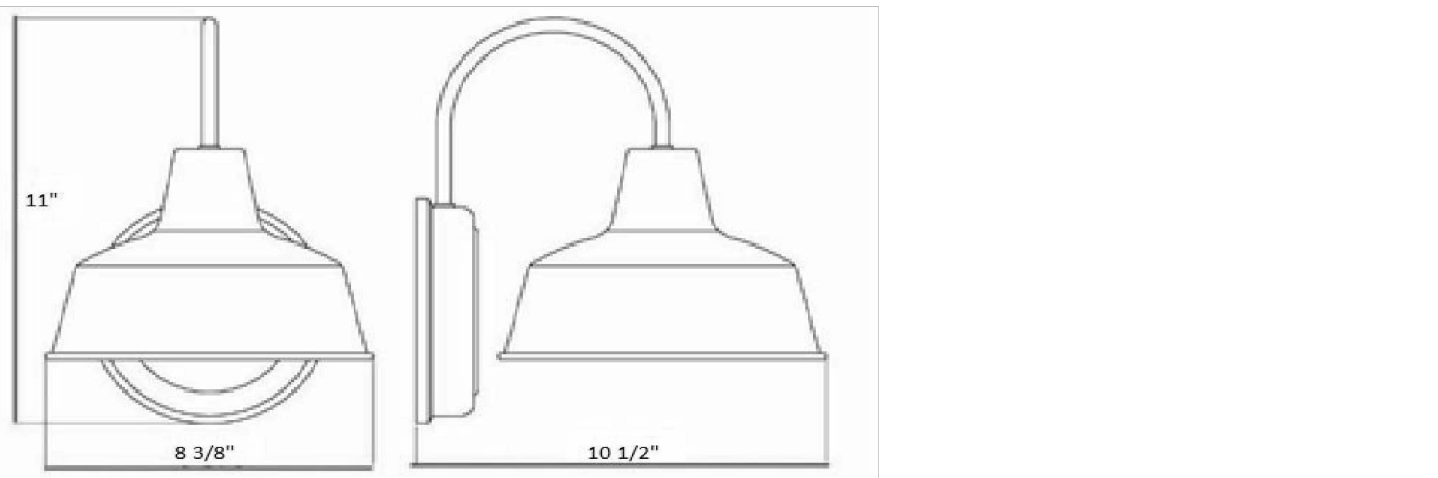
**Mason Wall Mount Dark Sky ORB**

**Specifications**

**Material Construction:** Formed Steel  
**Lens:** White Painted Inside of the Shade  
**Lamp Type & Wattage:** Uses 1 60W Medium Based Incandescent Bulb  
**Mounting:** Wall Mounted  
**Finish:** Oil Rubbed Bronze  
**Voltage:** 120V  
**Weight:** 1.36 lbs.




**Dimensions**



11"  
8 3/8"  
10 1/2"

**Warranty & Complies**

**Warranty:** 10 Year Limited Warranty  
**UL:** UL/cUL; Suitable for wet locations  
**ADA:** N/A  
**EnergyStar:** N/A



**Companion Fixtures**

**Mason Wall Mount Dark Sky Oil Rubbed Bronze**

519504

**Type:**  
**Job:**  
**Order Code:**  
**Approvals:**

Design House reserves the right to make changes in materials, specifications & models at any time. Design House also reserves the right to discontinue product without notice or obligation.

MASON Outdoor Wall Mount Dark Sky - 062211

www.todaydesignhouse.com

Design House is a registered brand of DHI Corp.  
Mequon, WI • 801-886-8700

**SGN+A, Inc.**  
315 West Ponce de Leon Ave  
Suite 755  
Decatur, GA. 30030  
Tel: 404.373.7370  
Fax: 404.373.7372  
[www.sgnplusa.com](http://www.sgnplusa.com)

1. UNLESS NOTED OTHERWISE, ALL POLE MOUNTED SITE LIGHTS SHALL BE INSTALLED AT AT 20'-0" AFF.

1 POLE LIGHT SHALL BE INSTALLED AT 15'-0" AFF

Statistics						
Description	Symbol	Avg	Max	Min	Max/Min	Avg/Min
SITE	+	1.0 fc	3.6 fc	0.2 fc	18.0:1	5.0:1

Date:	Description:
-------	--------------

[illegible]

## Preliminary Design Concepts

# Apartment - Village at View High

Lee's Summit, Missouri

A Residential Development by:



This drawing as an instrument of services, is and shall remain the property of SGN+A and shall not be reproduced, published or used in any way without permission of SGN+A, Inc.

Sheet Title:  
SITE PLAN -  
LIGHTING

Date:  
8/30/2016

Sheet Number:

E1.0





1. UNLESS NOTED OTHERWISE, ALL POLE MOUNTED SITE LIGHTS SHALL BE INSTALLED AT AT 20'-0" AFF.

KEY NOTES:

1 POLE LIGHT SHALL BE INSTALLED AT 15'-0" AFF

Statistics						
Description	Symbol	Avg	Max	Min	Max/Min	Avg/Min
PROPERTY LINE	+	0.0 fc	0.4 fc	0.0 fc	N/A	N/A

# SGN+A

Planning • Architecture  
Landscape Architecture

**SGN+A, Inc.**  
315 West Ponce de Leon Avenue  
Suite 755  
Decatur, GA. 30030  
Tel: 404.373.7370  
Fax: 404.373.7372  
[www.sgnplusa.com](http://www.sgnplusa.com)

## Revisions:

Date: Description:

## Preliminary Design Concepts

# Apartment - Village at View High

## Lee's Summit, Missouri

A Residential Development by:

**Cityscape**  
Residential

This drawing as an instrument of services, is and shall remain the property of SGN+A and shall not be reproduced, published or used in any way without permission of SGN+A, Inc.

Sheet Title:  
SITE PLAN -  
LIGHTING AT  
PROPERTY LINE

Date:  
8/30/2016

Sheet Number:

## E1.1

Not Released for Construction



Revisions:

Date:	Description:
31 Aug 2016	Per city comments

PERMIT  
SUBMITTAL

Meridian at  
View High

Lee's Summit,  
Missouri

A Residential Development by

**Cityscape**  
Residential

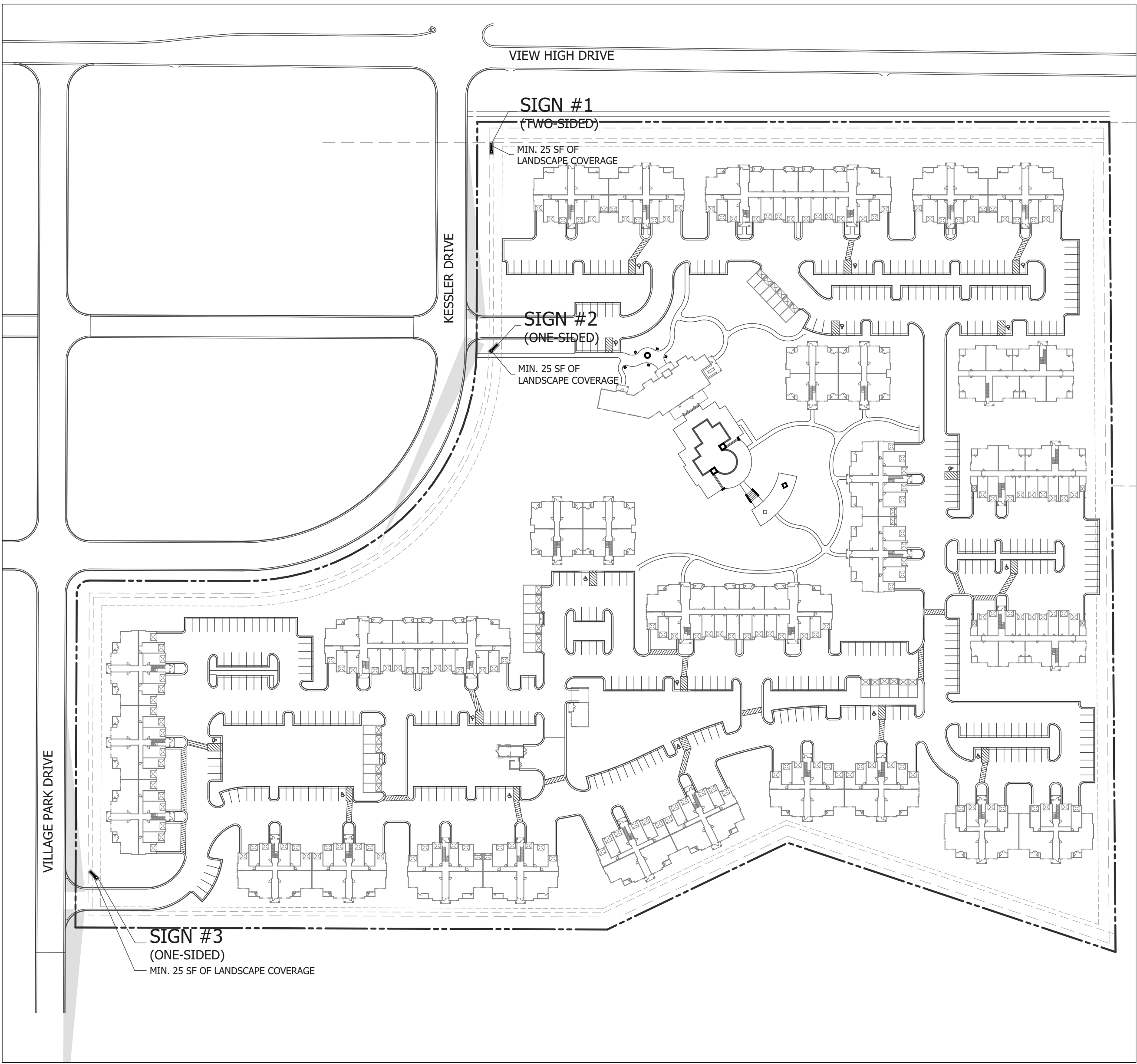
This drawing as an instrument of services, is and shall remain the property of SGN+A and shall not be reproduced, published or used in any way without permission of SGN+A, Inc.

Sheet Title:  
SIGNAGE PLAN  
AND DETAILS

Date:  
22 July 2016

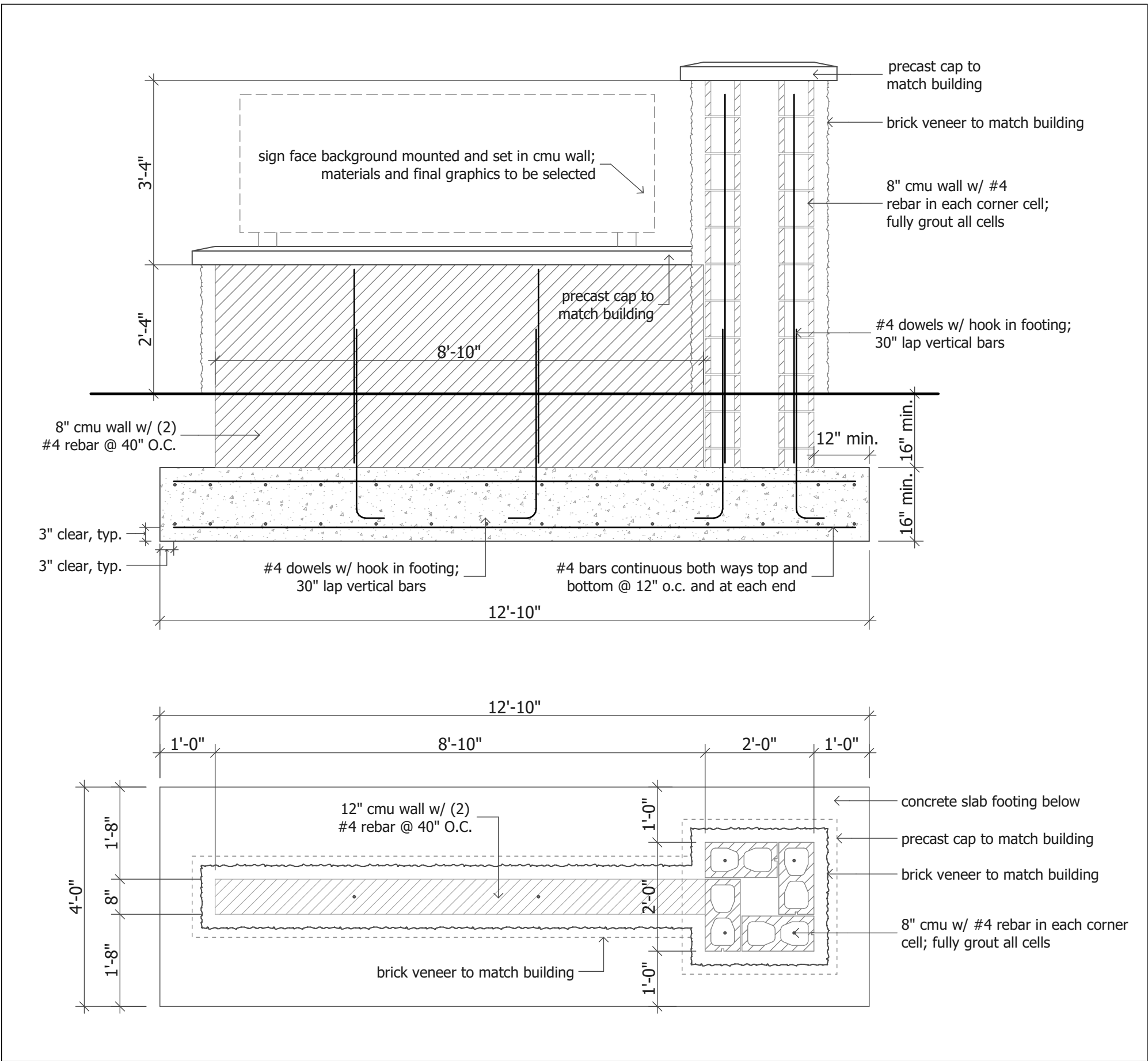
Sheet Number:

S1

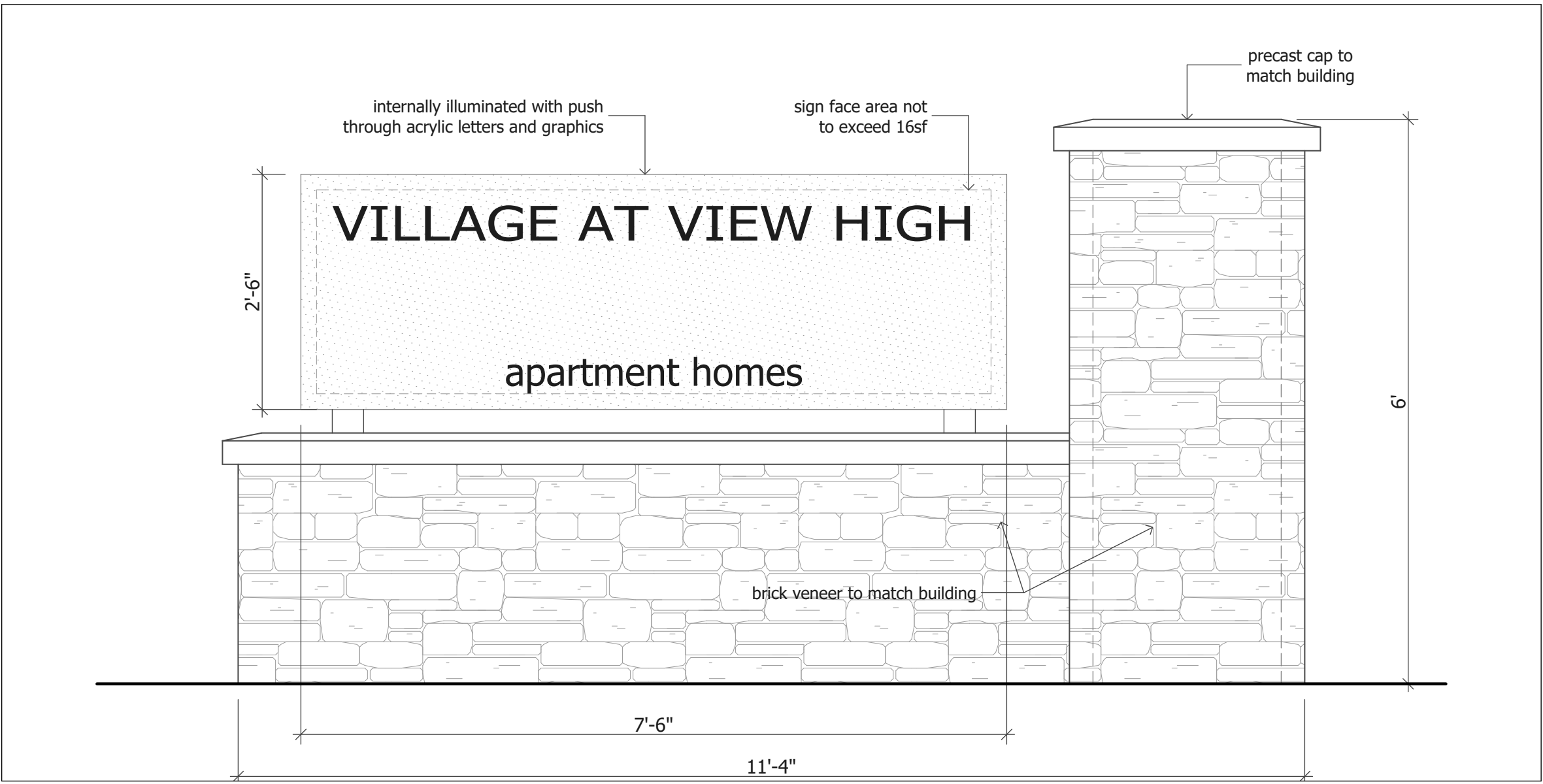


1 Signage Location Site Plan  
SCALE: 1" = 100'

NOTES  
1. ALL SIGNS SHALL HAVE LANDSCAPE COVERAGE AT THE BASE OF EACH THAT COVERS A MINIMUM OF 25 SF AROUND THE STRUCTURE.



2 Sign Section  
SCALE: 1/2" = 1'-0"



3 Sign Elevation  
SCALE: 3/4" = 1'-0"