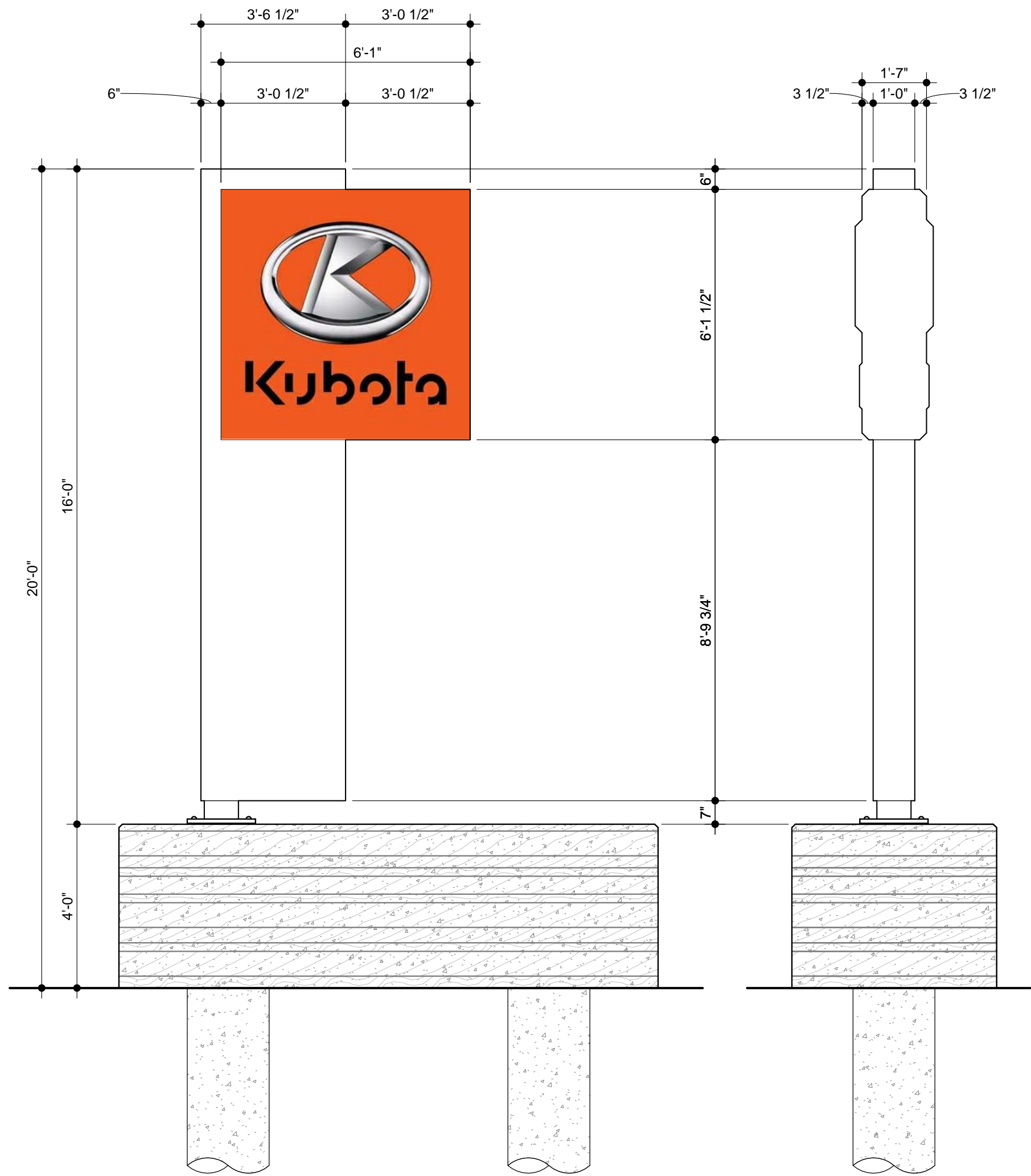
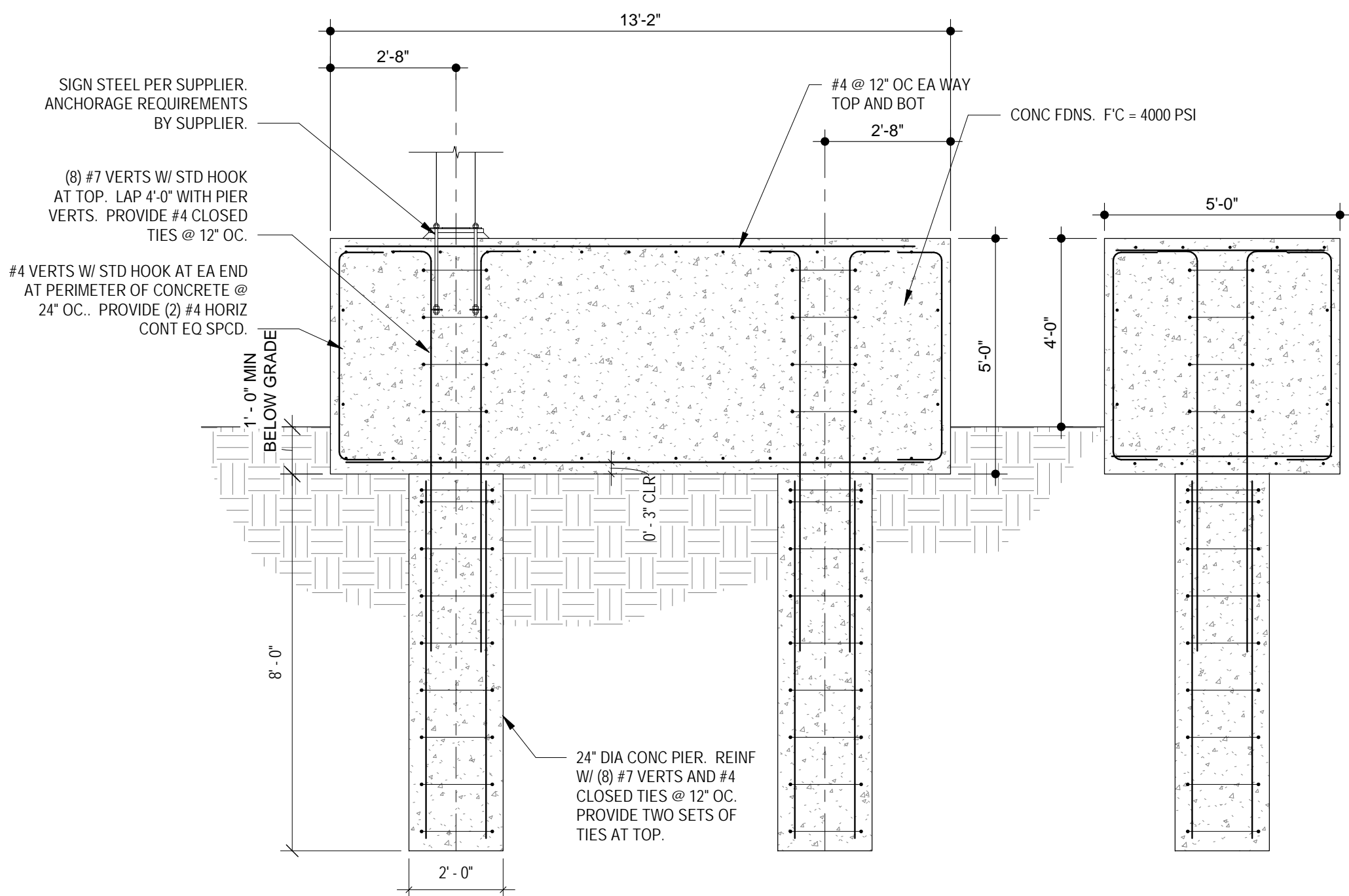


1/28/2018 10:11:21 AM

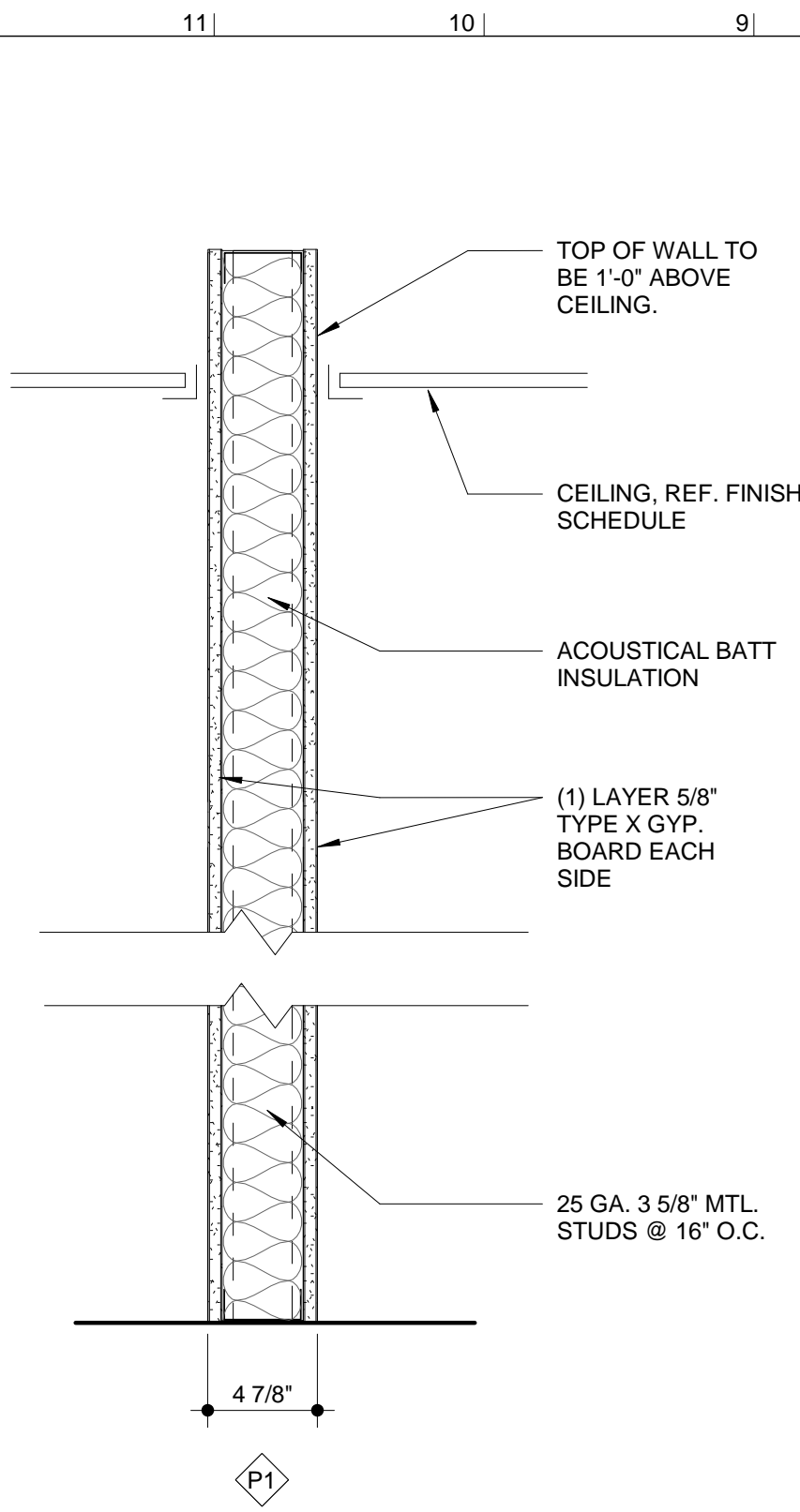
X:\DWG\Coleman Equipment\DWG\TL CELS.rvt



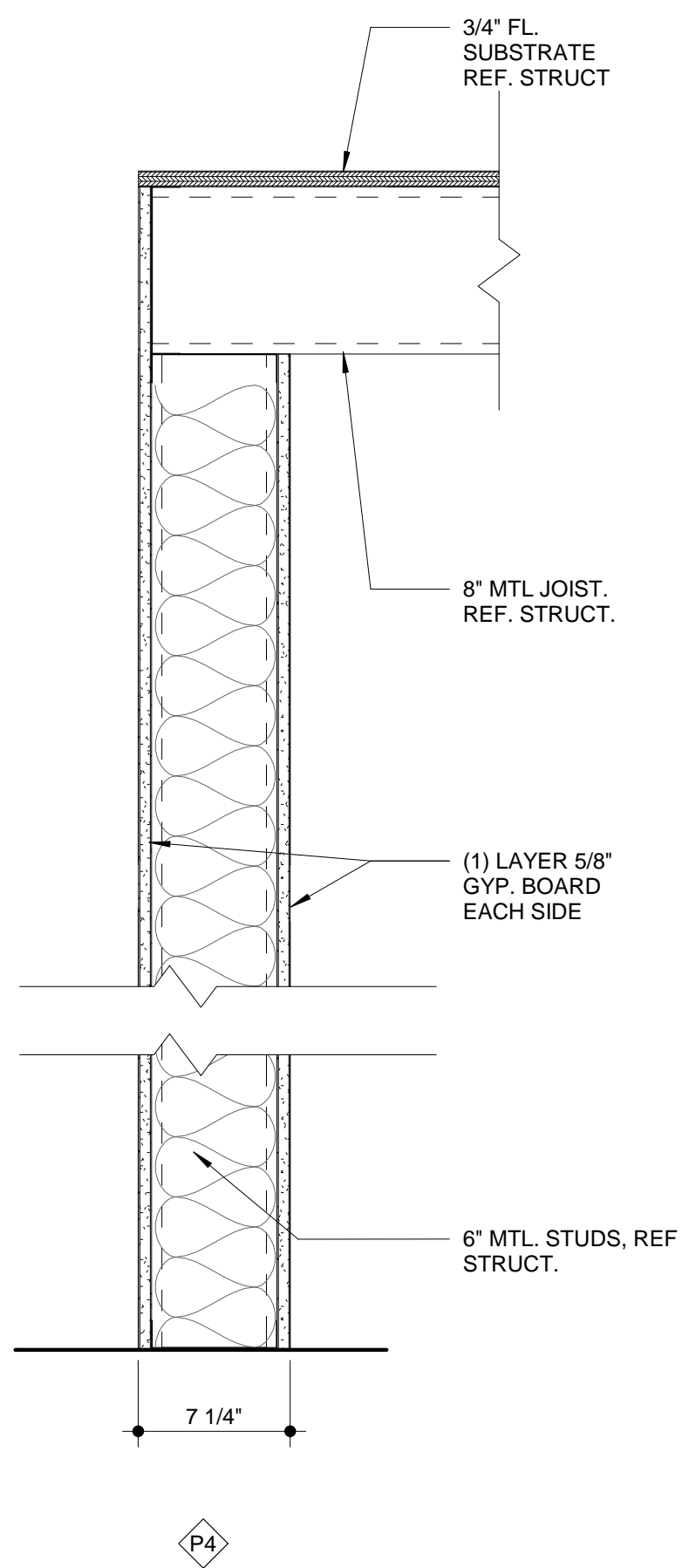
KUBOTA SIGN H12
3/8" = 1'-0"



SIGN SECTION A12
3/8" = 1'-0"



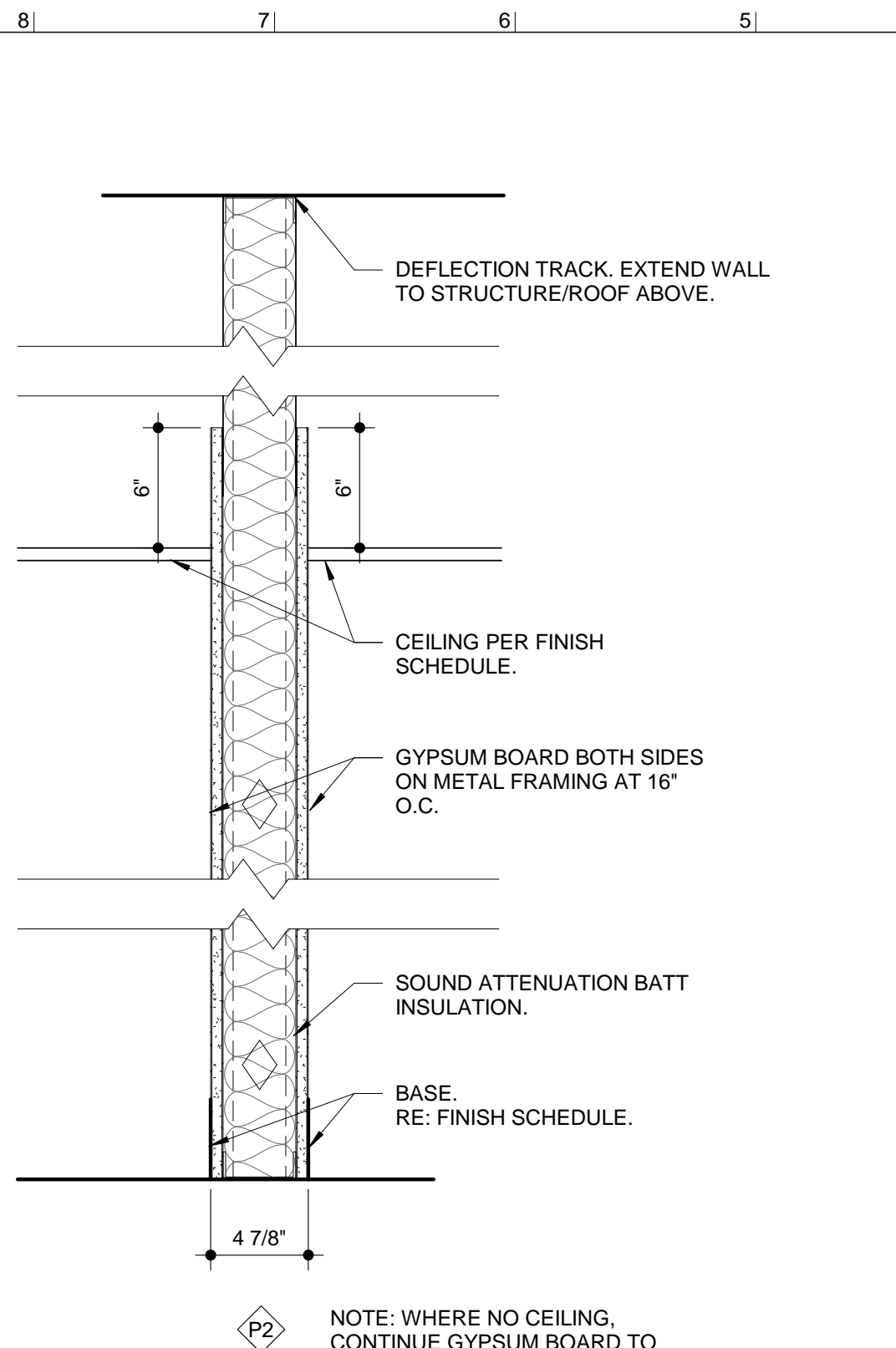
P1



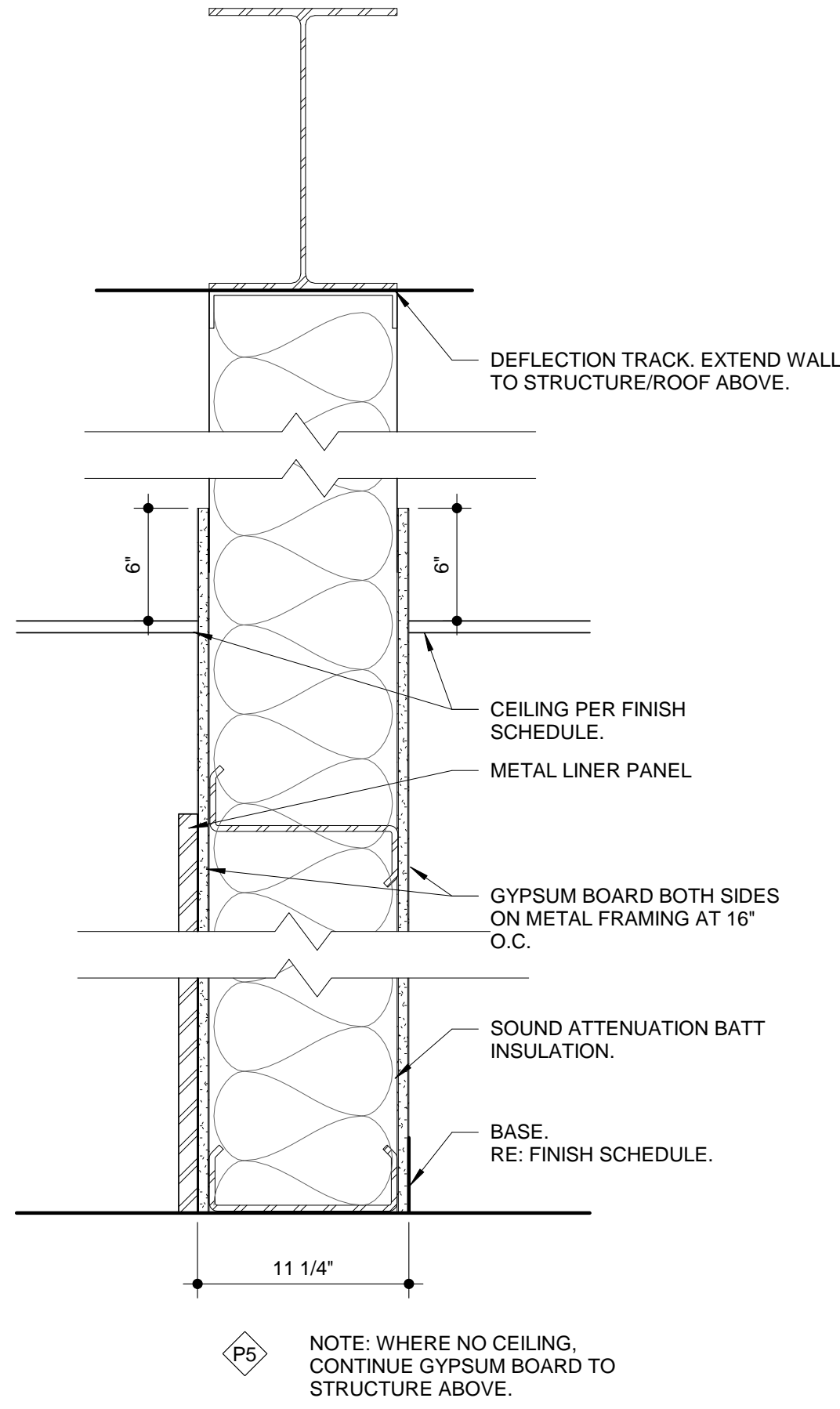
P4

PARTITION GENERAL NOTES:

1. PARTITION TYPES ARE APPLICABLE TO INTERIOR PARTITIONS ONLY, SEE WALL SECTIONS FOR EXTERIOR WALL CONDITIONS AND TYPES
2. SEE LIFE SAFETY PLAN FOR RATED PARTITION LOCATIONS, AT RATED PARTITION LOCATIONS, COMPLY WITH UL PARTITION DESIGN INDICATED
3. ALL FIRE RATED AND FIRE AND SMOKE RATED PARTITIONS SHALL EXTEND TO UNDERSIDE OF STRUCTURAL ASSEMBLY ABOVE AND BE CONSTRUCTED WITH TYPE X GYPSUM BOARD, SEAL HEAD OF WALL JOINT AND ALL PENETRATIONS WITH UL LISTED FIRE STOPPING ASSEMBLIES
4. METAL STUDS SHALL BE 20 GA. SPACED 1' 6" O.C., UNLESS INDICATED OTHERWISE, AND MEET ASTM C645 AND C955 STANDARDS
5. FOR CEILING HEIGHT SEE ROOM FINISH SCHEDULE OR REFLECTED CEILING PLANS

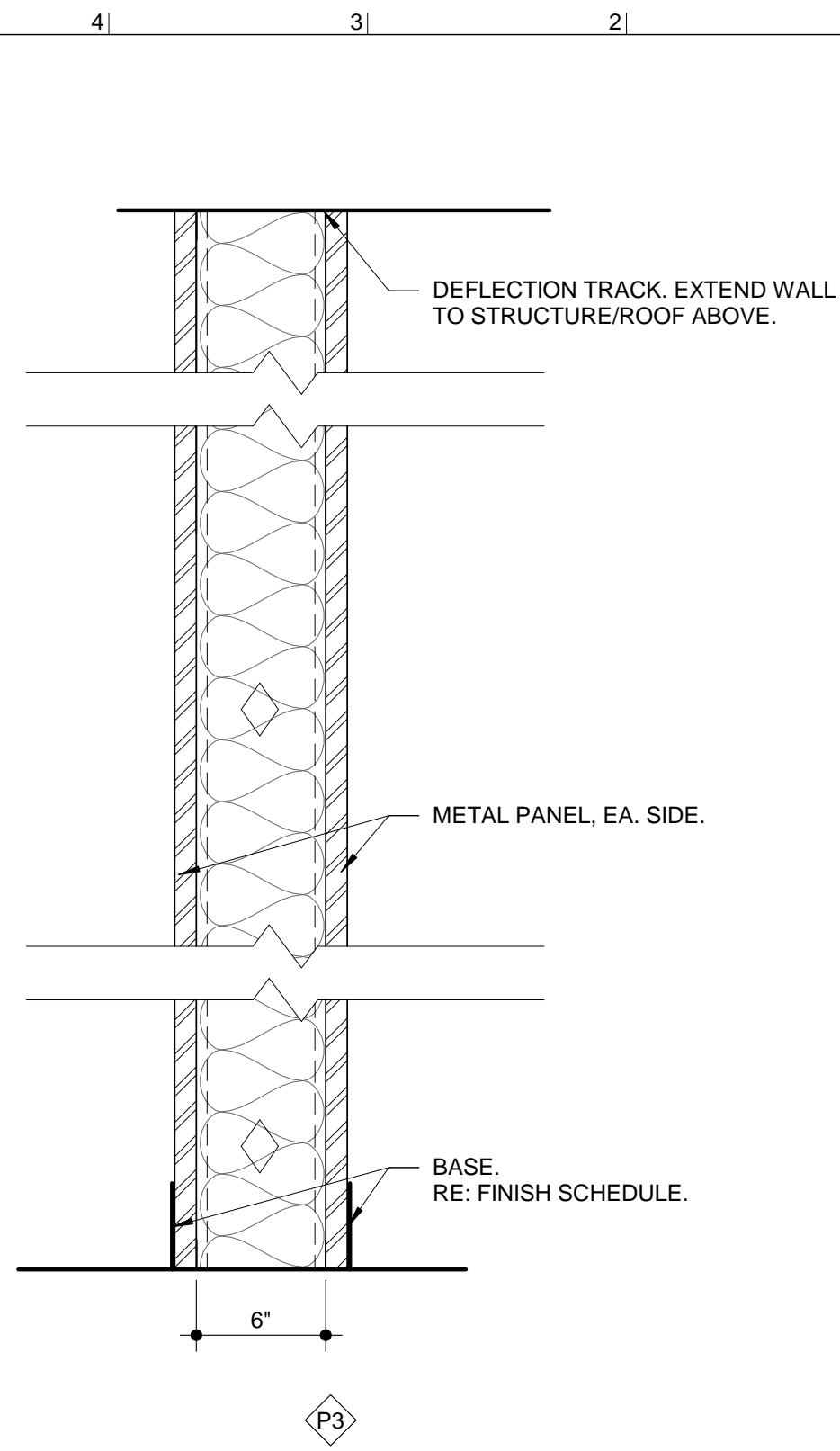


P2



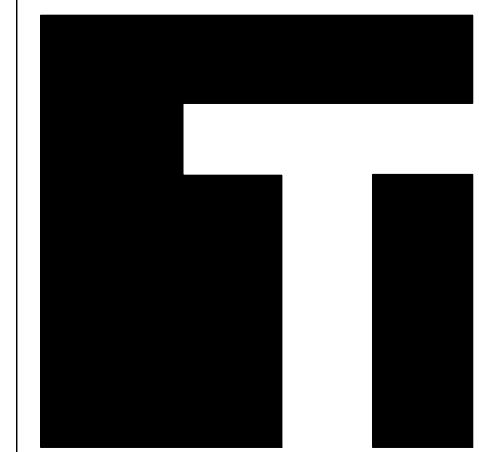
P5

6. ALL WALLS IN JANITOR CLOSETS, RESTROOM, AND LOCKER ROOMS SHALL USE MOISTURE RESISTANT GYPSUM WALL BOARD
7. ALL WALLS SCHEDULED FOR CERAMIC TILE OR INTERIOR STONE FACING SHALL USE CEMENT TILE BACKER BOARD
8. REFER TO PAINTING SPECIFICATION FOR LABELING OF FIRE AND SMOKE PENETRATIONS
9. ALL PENETRATIONS IN GWS SHALL BE FULLY SEALED - IF IT IS A THROUGH WALL PENETRATION IT SHALL BE FULLY SEALED ON BOTH SIDES OF THE PARTITION
10. ALL WALLS WITH 'A' SUFFIX SHALL HAVE ACOUSTICAL SEALANT AT BOTH SIDES OF FLOOR AND CEILING RUNNER TRACKS
11. ALL PARTITIONS TO BE CONSTRUCTED TO TYPE 1 UNLESS OTHERWISE SPECIFIED
12. AT PARTITIONS THAT EXTEND TO UNDERSIDE OF STRUCTURE ABOVE, INSTALL ANGLED STUD BRACING AT 4' O.C. STAGGERED MAX. BACK TO ADJACENT STRUCTURE, STRUCTURE TO VERIFY



P3

PARTITION TYPES A1
1 1/2" = 1'-0"



TEVIS
ARCHITECTS
www.tevisarchitects.com

LENEXA OFFICE:
8725 ROSEHILL RD STE 400
LENEXA, KS 66215
P: 913.599.3003

TOPEKA OFFICE:
1250 SW OAKLEY STE 200
TOPEKA, KS 66604
P: 785.234.6664

MEP ENGINEER
HD ENGINEERING
11656 W 75TH STREET
SHAWNEE, KS 66214
P: 913.631.2222
F: 800.780.8608

STRUCTURAL ENGINEER
STAND STRUCTURAL
ENGINEERING, INC
11827 W 112TH ST. #200
OVERLAND PARK, KS 66210
P: 913.214.2169

CIVIL ENGINEER
SCHLAGEL & ASSOCIATES P.A.
14920 W. 107TH STREET
LENEXA, KS 66215
P: 913.492.5158
F: 913.492.8400

COLEMAN EQUIPMENT

4101 NE LAKEWOOD WAY
LEE'S SUMMIT, MO 64064

PN: 217001
DRAWN BY: MH/DW
CHECKED BY: LS

NO.	ISSUE/REVISION	DATE
1	BID SET	06/21/2017
2	REVISED SET	08/24/2017
3	PR #4	01/25/2018

PARTITION TYPES & SIGN DETAIL

G-004

© 2017 TEVIS ARCHITECTURAL GROUP PA