



Hunt Midwest

8300 N.E. UNDERGROUND DRIVE
KANSAS CITY, MISSOURI 64161
(816) 455-2500 • Fax: (816) 455-2890

July 26, 2017

City of Lee's Summit, Missouri

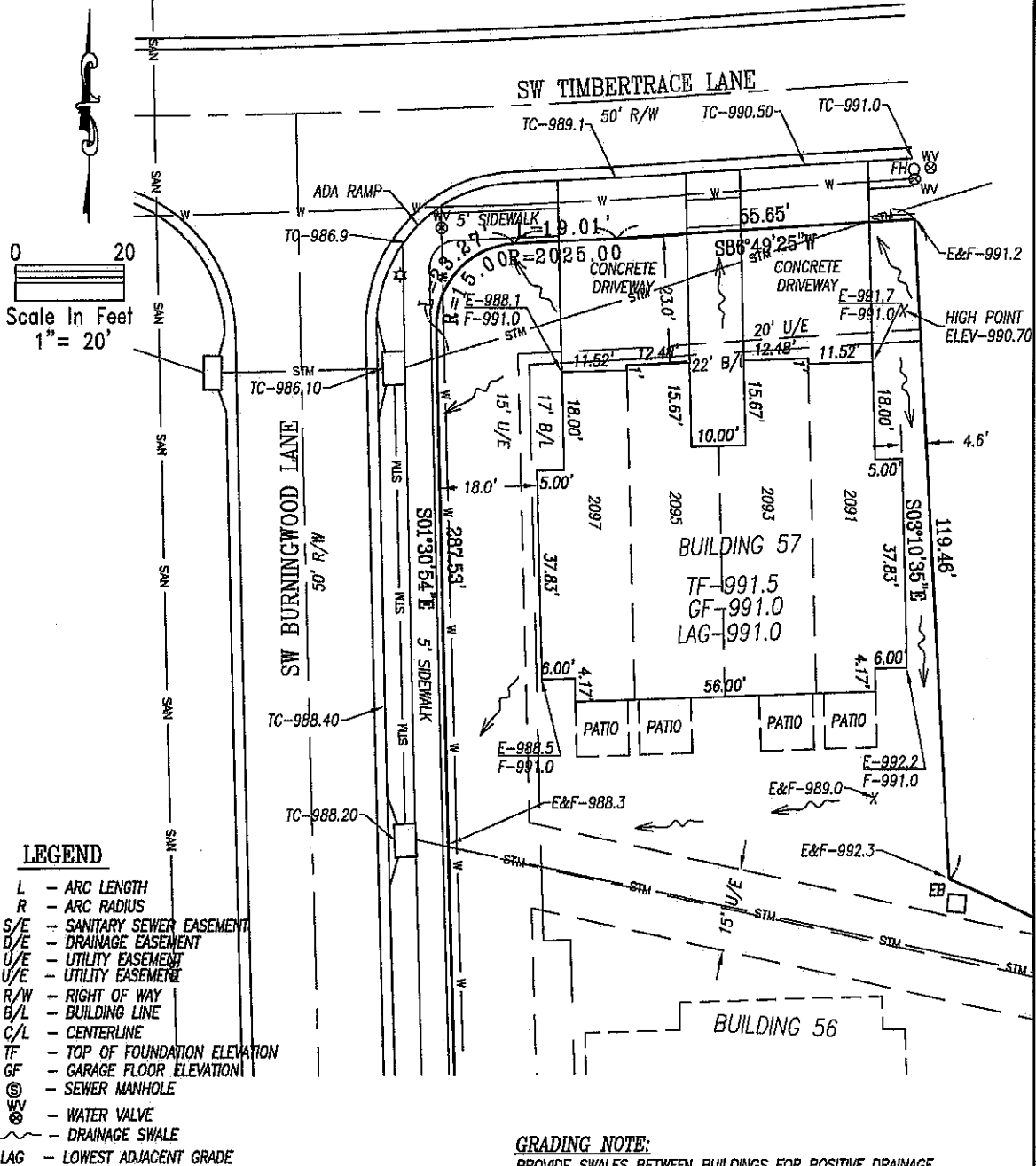
RE: Building 57 of Eagle Creek Townhomes- Third Plat
Address 2091-2097 SW Timbertrace Lane

We are aware of Building 57 of Eagle Creek Townhomes- Third Plat is being built 4.6' west of the east property of Lot J. Any future building adjacent to Building 57 will have a minimum setback of 15 feet from this foundation. We give PC Homes the approval to build Building 57 as indicated on the attached site plan prepared by Boundary & Construction Surveying Inc. dated July 19, 2017.

Sincerely,

H. Aaron Schmidt
Assistant General Manager of Planning and Construction

SITE PLAN
EAGLE CREEK TOWNHOMES-THIRD PLAT
LEE'S SUMMIT, JACKSON COUNTY, MISSOURI



LEGEND

- L - ARC LENGTH
- R - ARC RADIUS
- S/E - SANITARY SEWER EASEMENT
- D/E - DRAINAGE EASEMENT
- U/E - UTILITY EASEMENT
- R/W - RIGHT OF WAY
- B/L - BUILDING LINE
- C/L - CENTERLINE
- TF - TOP OF FOUNDATION ELEVATION
- GF - GARAGE FLOOR ELEVATION
- SM - SEWER MANHOLE
- WV - WATER VALVE
- DS - DRAINAGE SWALE
- LAG - LOWEST ADJACENT GRADE

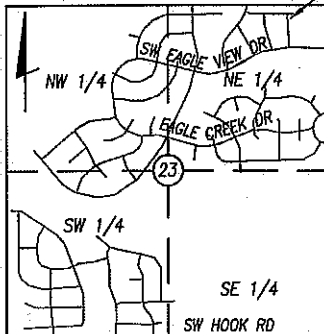
GRADING NOTE:

PROVIDE SWALES BETWEEN BUILDINGS FOR POSITIVE DRAINAGE.

LEGAL DESCRIPTION:

A PART OF LOT J, EAGLE CREEK TOWNHOMES, SECOND PLAT A SUBDIVISION IN LEE'S SUMMIT, JACKSON COUNTY, MISSOURI.

AS-GRADED PLOT PLAN IS REQUIRED



LOCATION MAP
 SCALE=1"=2000'
 SECTION 23 TOWNSHIP 47 RANGE 32

EAGLE CREEK TOWNHOMES-THIRD PLAT

SITE PLAN

BOUNDARY & CONSTRUCTION SURVEYING, INC.
 821 NE COLUMBUS STREET SUITE 103, LEE'S SUMMIT, MO. 64063
 PH. # 816/554-9788, FAX # 816/554-0337

DATE: JULY 19, 2017

DEVELOPER:
 PC HOMES LLC
 BRIAN MERTZ
 7807 NW JOHN ANDERS
 KANSAS CITY, MISSOURI 64152
 PH. # 816-616-3016 (MOBILE)

PROJECT NO. 16-233

SHEET 1 OF 1

EAGLE CREEK TOWNHOMES - 3RD PLAT