

26 FIRST FLOOR
 3/32" = 1'-0" NORTH

Richard S. Clawson
 Architect
 MO# A-2002026549



17107 Chesterfield Airport Rd.
 Suite 110
 Chesterfield, MO 63005
 T: 314.991.9993

ACI Boland Architects
 St. Louis | Kansas City
 Licensee's Certificate of Authority Number:
 Missouri No.: 000958 (Expires: 12.31.2017)

CIVIL CONSULTANT

Safer, Kline & Warren, Inc.
 11250 Corporate Avenue
 Lenexa, Kansas 66219
 Licensee's Certificate of Authority Number:
 #000143
 913.888.7800

STRUCTURAL CONSULTANT

KPFE, Inc.
 1610 Des Peres Road, Suite 100
 St. Louis, Missouri 63131
 Licensee's Certificate of Authority Number:
 #200100829
 314.835.0524

MEP/FP CONSULTANT

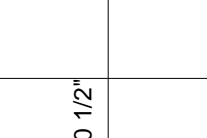
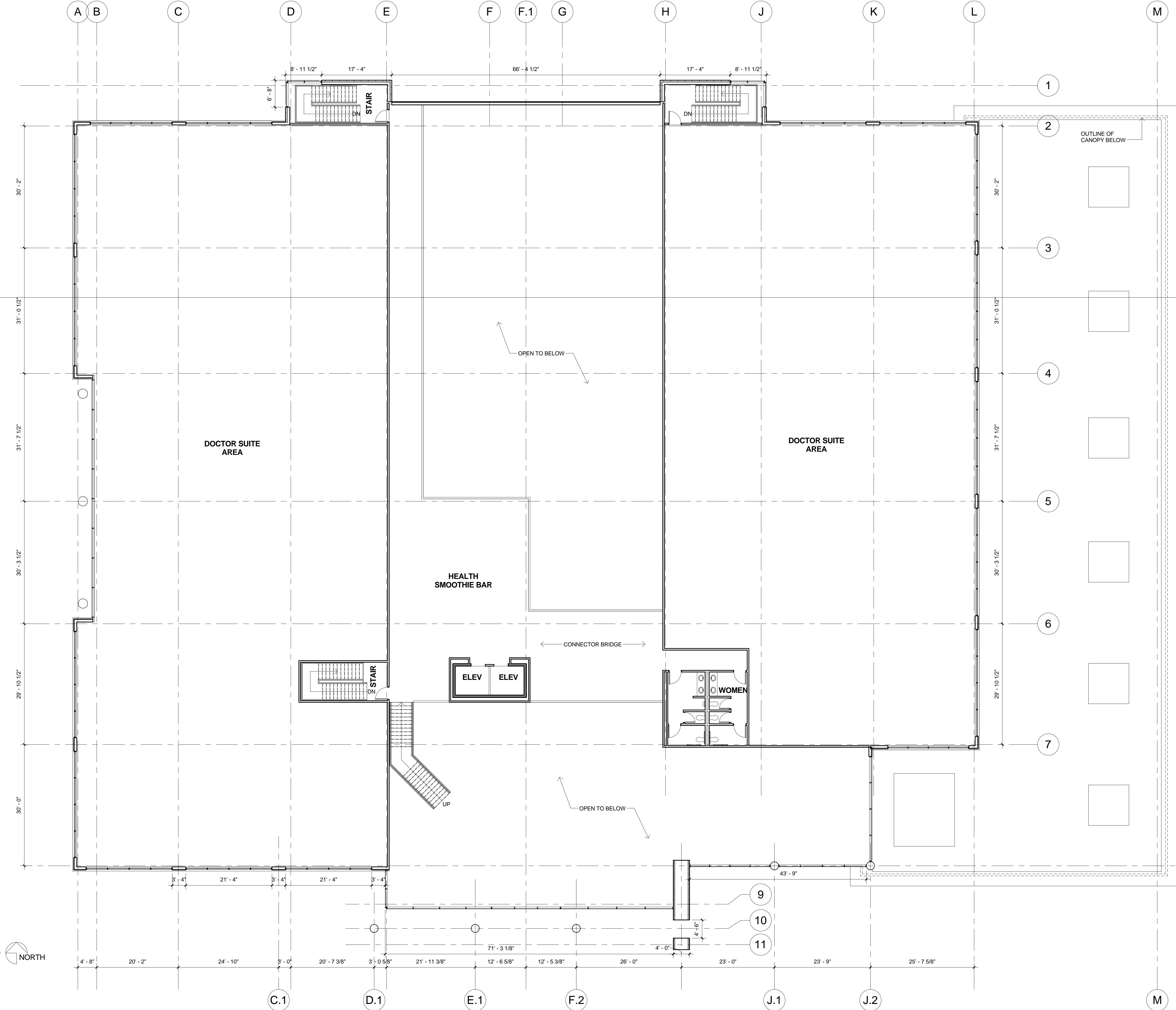
G&W Engineering Corporation
 138 Weldon Parkway
 Maryland Heights, Missouri 63043
 Licensee's Certificate of Authority Number:
 #2002018767
 314.737.4200

Proposed New Core & Shell Building For:
Lee's Summit Surgical
 Lee's Summit, Missouri

Date: 09.22.2017
 Job Number: 217507
 Drawn By: AWRJ
 Checked By: RSC

Revision		
Number	Date	Description

26 SECOND FLOOR
3/32" = 1'-0"



Richard S. Clawson
Architect
MO# A-2002026549



17107 Chesterfield Airport Rd.
Suite 110
Chesterfield, MO 63005
T: 314.991.9993

ACI Boland Architects
St. Louis | Kansas City
Licensee's Certificate of Authority Number:
Missouri No.: 000958 (Expires: 12.31.2017)

CIVIL CONSULTANT

Shafer, Kline & Warren, Inc.
11250 Corporate Avenue
Lenexa, Kansas 66219
Licensee's Certificate of Authority Number:
#000143
913.888.7800

STRUCTURAL CONSULTANT

KPFE, Inc.
1610 Des Peres Road, Suite 100
St. Louis, Missouri 63131
Licensee's Certificate of Authority Number:
#2001010829
314.835.0524

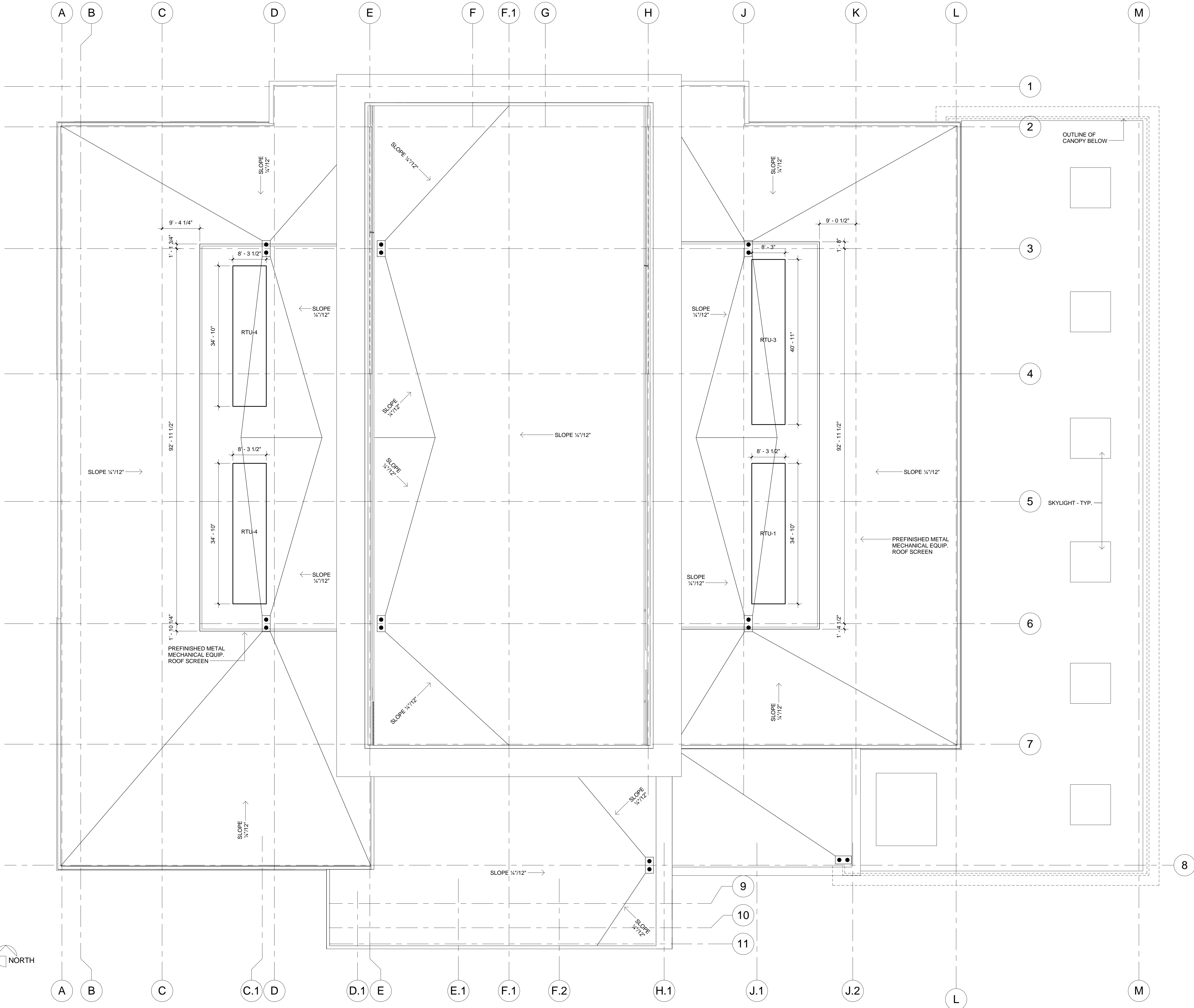
MEP/FP CONSULTANT

G&W Engineering Corporation
138 Weldon Parkway
Maryland Heights, Missouri 63043
Licensee's Certificate of Authority Number:
#2002018767
314.737.4200

Proposed New Core & Shell Building For:
Lee's Summit Surgical
Lee's Summit, Missouri

Date: 09.22.2017
Job Number: 217507
Drawn By: AWRJ
Checked By: RSC

Revision		
Number	Date	Description



Proposed New Core & Shell Building For:
Lee's Summit Surgical
 Lee's Summit, Missouri

Date: 09.22.2017
 Job Number: 217507
 Drawn By: AWRJ
 Checked By: RSC

Revision		
Number	Date	Description



17107 Chesterfield Airport Rd.
 Suite 110
 Chesterfield, MO 63005
 T: 314.991.9993
 ACI Boland Architects
 St. Louis | Kansas City
 Licensee's Certificate of Authority Number:
 Missouri No.: 000958 (Expires: 12.31.2017)

CIVIL CONSULTANT
 Shafer, Kline & Warren, Inc.
 11250 Corporate Avenue
 Lenexa, Kansas 66219
 Licensee's Certificate of Authority Number:
 #000143
 913.888.7800

STRUCTURAL CONSULTANT
 KPFE, Inc.
 1610 Des Peres Road, Suite 100
 St. Louis, Missouri 63131
 Licensee's Certificate of Authority Number:
 #200100329
 314.835.0524

MEP/FP CONSULTANT
 G&W Engineering Corporation
 138 Weldon Parkway
 Maryland Heights, Missouri 63043
 Licensee's Certificate of Authority Number:
 #2002018767
 314.737.4200



VIEW FROM SOUTHEAST LOOKING NORTHWEST



VIEW FROM NORTHWEST LOOKING SOUTHEAST



17107 Chesterfield Airport Rd.
Suite 110
Chesterfield, MO 63005
T: 314.991.9993

ACI Boland Architects
St. Louis | Kansas City
Licensee's Certificate of Authority Number:
Missouri No.: 000958 (Expires: 12.31.2017)

CIVIL CONSULTANT

Shafer, Kline & Warren, Inc.
11250 Corporate Avenue
Lenexa, Kansas 66219
Licensee's Certificate of Authority Number:
#000143
913.888.7800

STRUCTURAL CONSULTANT

KPFF, Inc.
1610 Des Peres Road, Suite 100
St. Louis, Missouri 63131
Licensee's Certificate of Authority Number:
#2001010829
314.835.0524

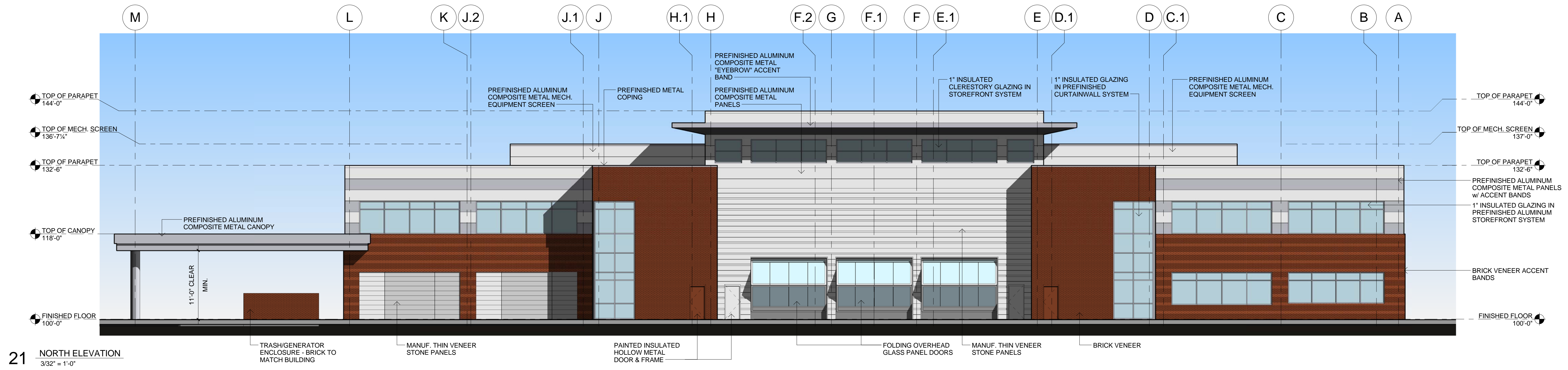
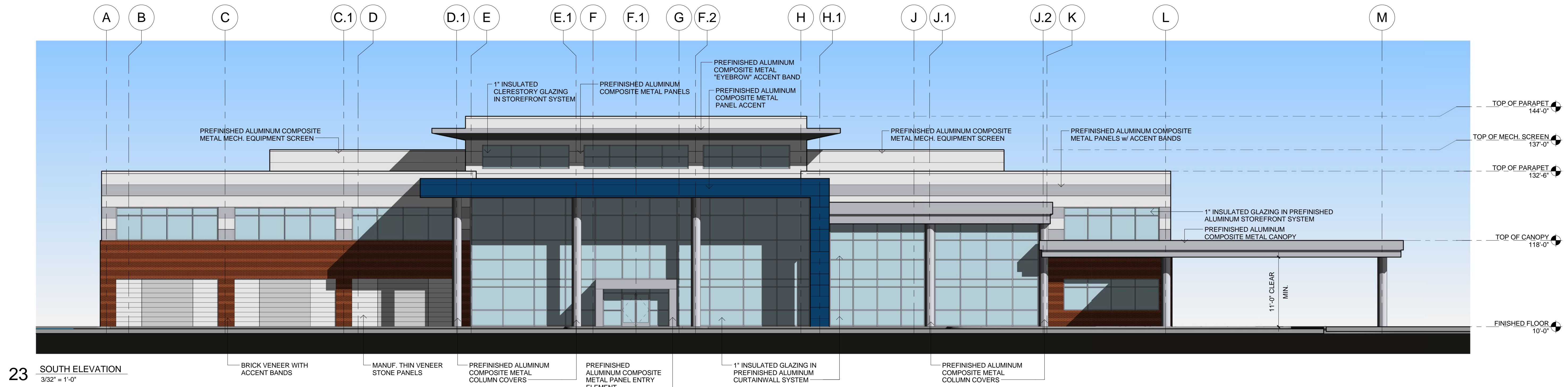
MEP/FP CONSULTANT

G&W Engineering Corporation
138 Weldon Parkway
Maryland Heights, Missouri 63043
Licensee's Certificate of Authority Number:
#2002018767
314.797.4200

Proposed New Core & Shell Building For:
Lee's Summit Surgical
Lee's Summit, Missouri

Date	10.23.2017
Job Number	217307
Drawn By	AWRJ
Checked By	RSC

Revision		
Number	Date	Description



17107 Chesterfield Airport Rd.
Suite 110
Chesterfield, MO 63005
T: 314.991.9993

ACI Boland Architects
St. Louis | Kansas City
Licensee's Certificate of Authority Number:
Missouri No.: 000958 (Expires: 12.31.2017)

CIVIL CONSULTANT

Safer, Kline & Warren, Inc.
11250 Corporate Avenue
Lenexa, Kansas 66219
Licensee's Certificate of Authority Number:
#000143
913.888.7800

STRUCTURAL CONSULTANT

KPFF, Inc.
1610 Des Peres Road, Suite 100
St. Louis, Missouri 63131
Licensee's Certificate of Authority Number:
#2001010839
314.835.0524

MEP/FP CONSULTANT

G&W Engineering Corporation
138 Weldon Parkway
Maryland Heights, Missouri 63043
Licensee's Certificate of Authority Number:
#2002018767
314.737.4200

Proposed New Core & Shell Building For:
Lee's Summit Surgical
Lee's Summit, Missouri

Date	10.17.2017
Job Number	217507
Drawn By	AWRJ
Checked By	RSC

Number	Date	Description



17107 Chesterfield Airport Rd.
Suite 110
Chesterfield, MO 63005
T: 314.991.9993

ACI Boland Architects
St. Louis | Kansas City
Licensee's Certificate of Authority Number:
Missouri No.: 000958 (Expires: 12.31.2017)

CIVIL CONSULTANT

Shafer, Kline & Warren, Inc.
11250 Corporate Avenue
Lenexa, Kansas 66219
Licensee's Certificate of Authority Number:
#000143
913.888.7800

STRUCTURAL CONSULTANT

KPFF, Inc.
1610 Des Peres Road, Suite 100
St. Louis, Missouri 63131
Licensee's Certificate of Authority Number:
#200100829
314.835.0524

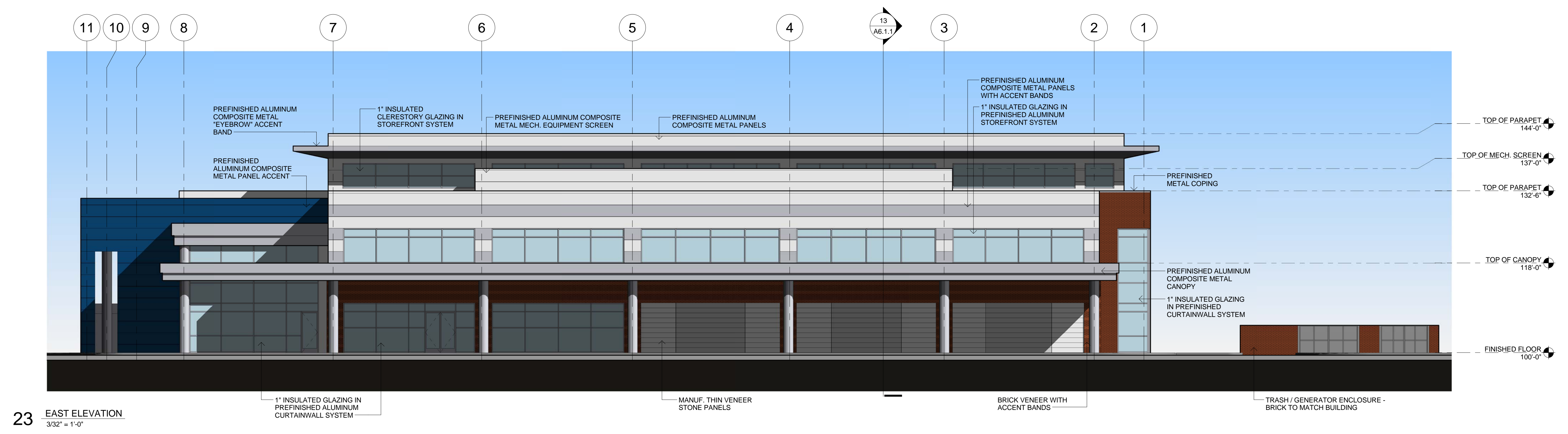
MEP/FP CONSULTANT

G&W Engineering Corporation
138 Weldon Parkway
Maryland Heights, Missouri 63043
Licensee's Certificate of Authority Number:
#2002018767
314.737.4200

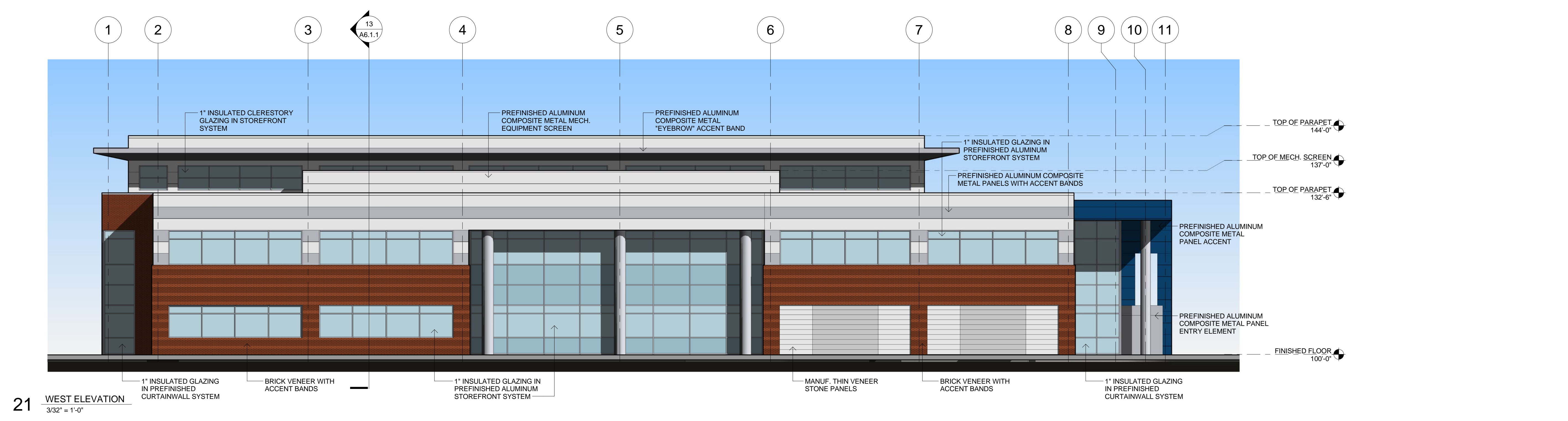
Proposed New Core & Shell Building For:
Lee's Summit Surgical
Lee's Summit, Missouri

Date: 10.17.2017
Job Number: 217507
Drawn By: AWRJ
Checked By: RSC

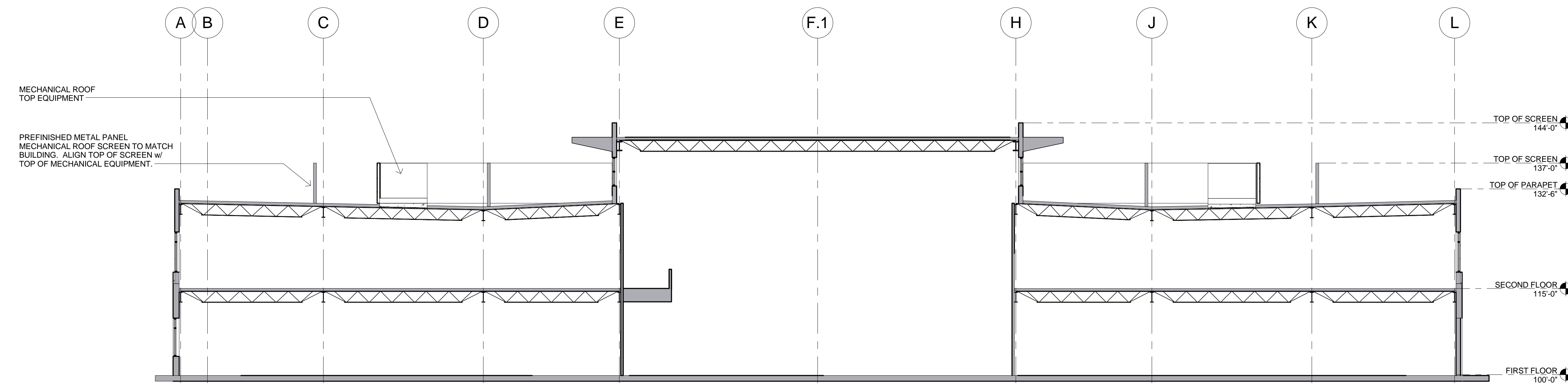
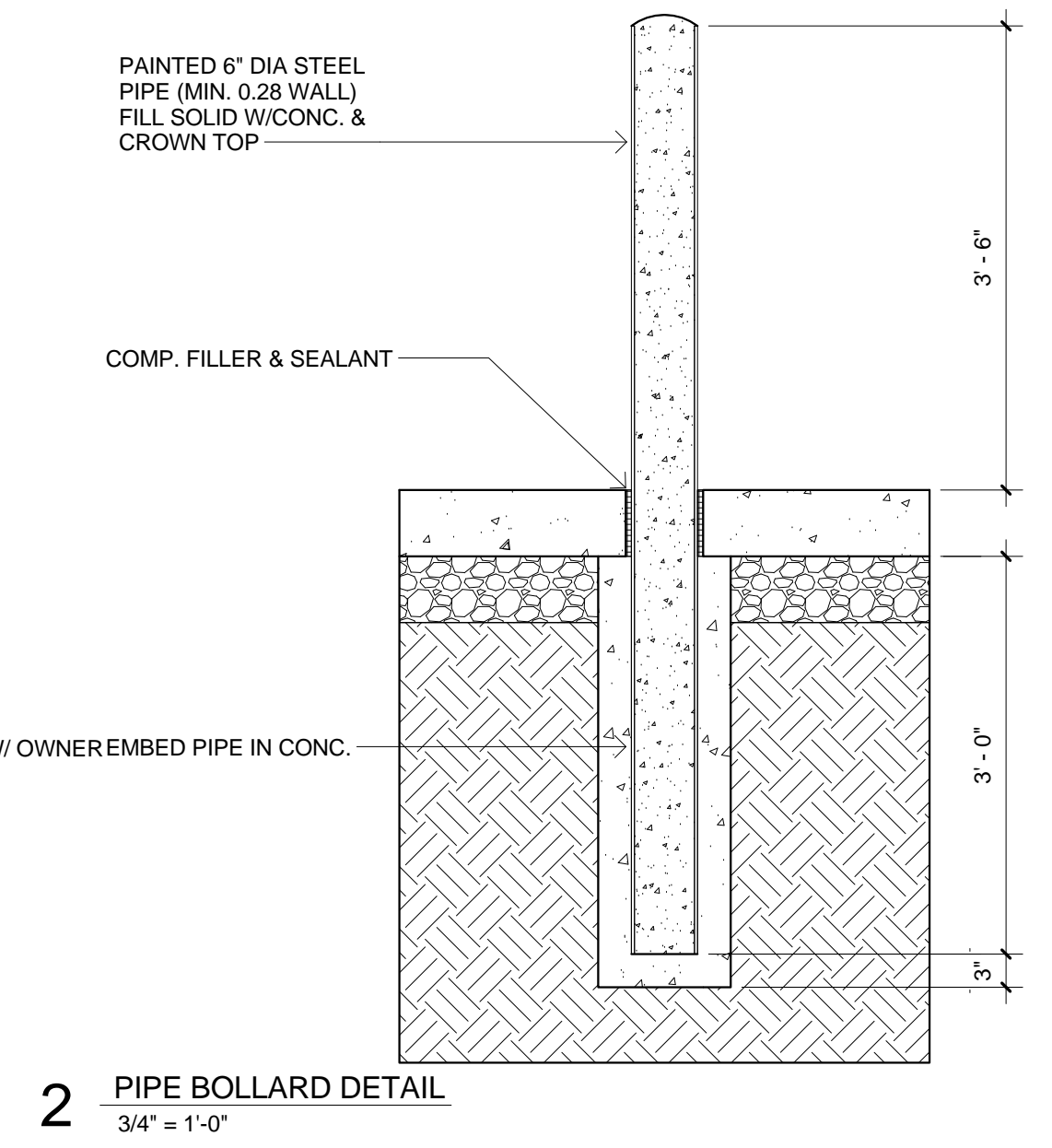
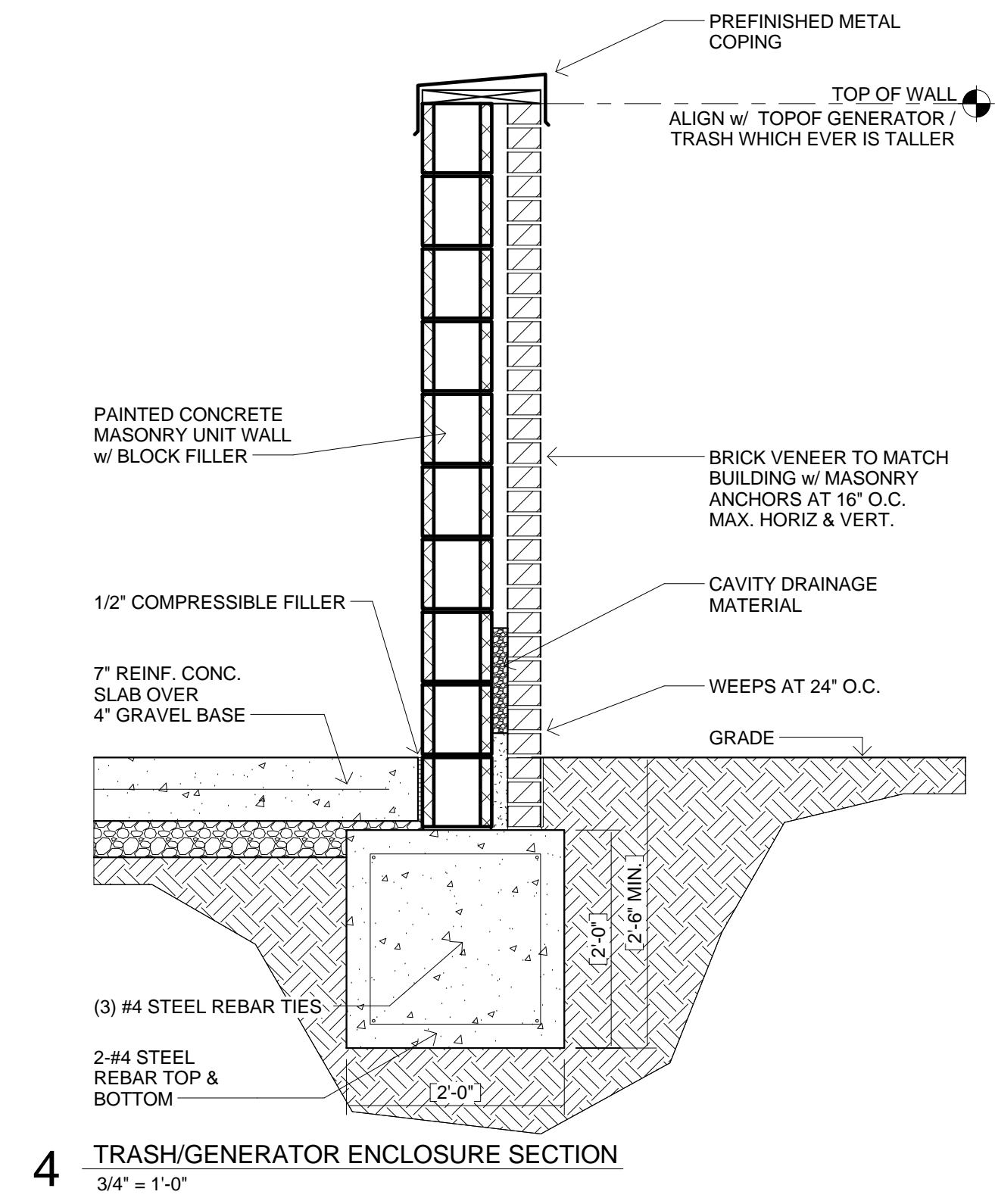
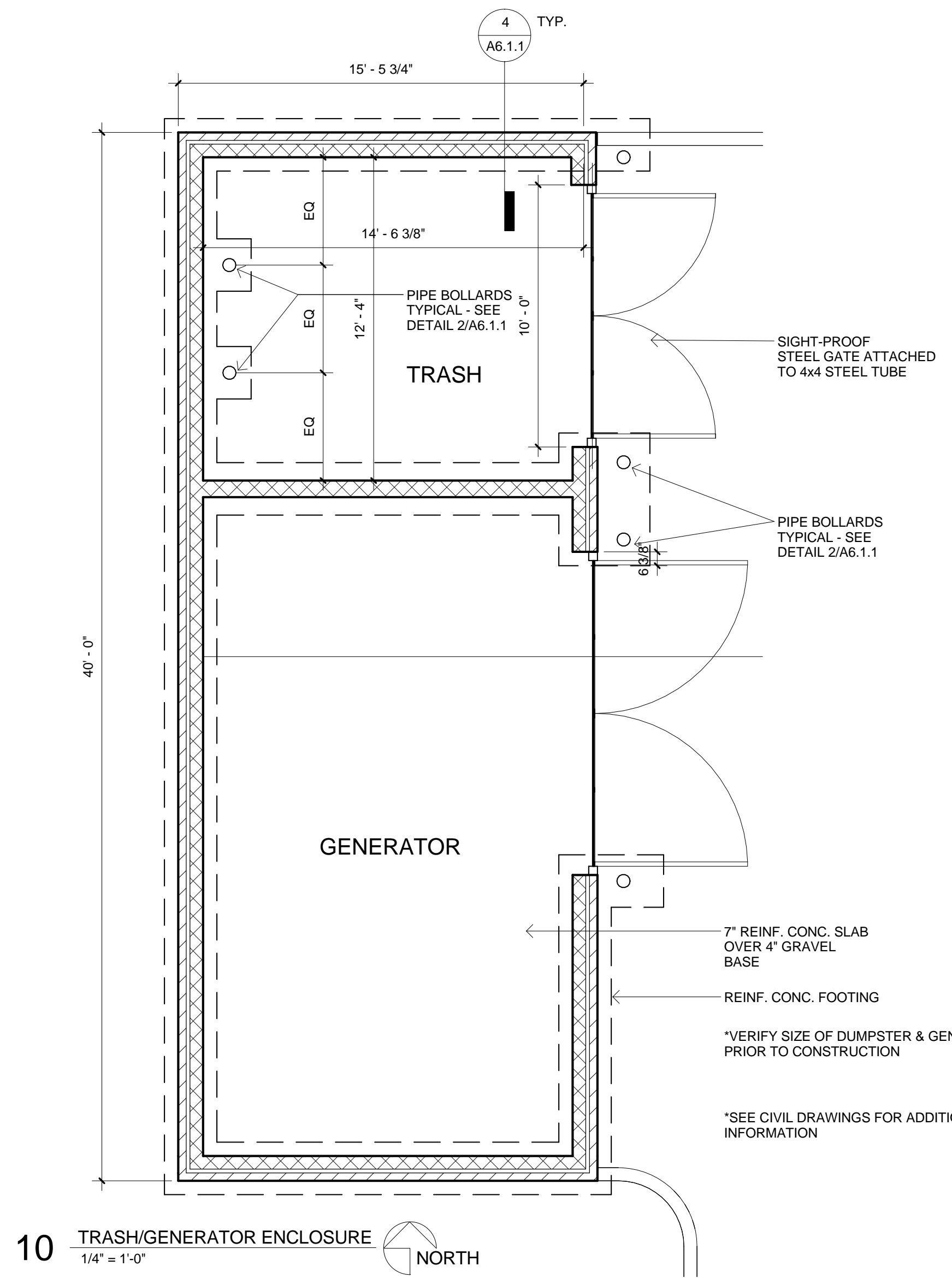
Revision		
Number	Date	Description



23 EAST ELEVATION
3/32" = 1'-0"



21 WEST ELEVATION
3/32" = 1'-0"



17107 Chesterfield Airport Rd.
Suite 110
Chesterfield, MO 63005
T: 314.991.9993
ACI Boland Architects
St. Louis | Kansas City
Licensee's Certificate of Authority Number:
Missouri No.: 000958 (Expires: 12.31.2017)

CIVIL CONSULTANT
Shafer, Kline & Warren, Inc.
11250 Corporate Avenue
Lenexa, Kansas 66219
Licensee's Certificate of Authority Number:
#000143
913.888.7800

STRUCTURAL CONSULTANT
KPFF, Inc.
1610 Des Peres Road, Suite 100
St. Louis, Missouri 63131
Licensee's Certificate of Authority Number:
#20010829
314.835.0524

MEP/FP CONSULTANT
G&W Engineering Corporation
138 Weldon Parkway
Maryland Heights, Missouri 63043
Licensee's Certificate of Authority Number:
#2002018767
314.737.4200

Proposed New Core & Shell Building For:
Lee's Summit Surgical
Lee's Summit, Missouri

Date: 09/19/17
Job Number: 217507
Drawn By: AWRJ
Checked By: RSC

Number	Date	Description

© 2017 ACI Boland Architects

APPROVED BUILDING AREA

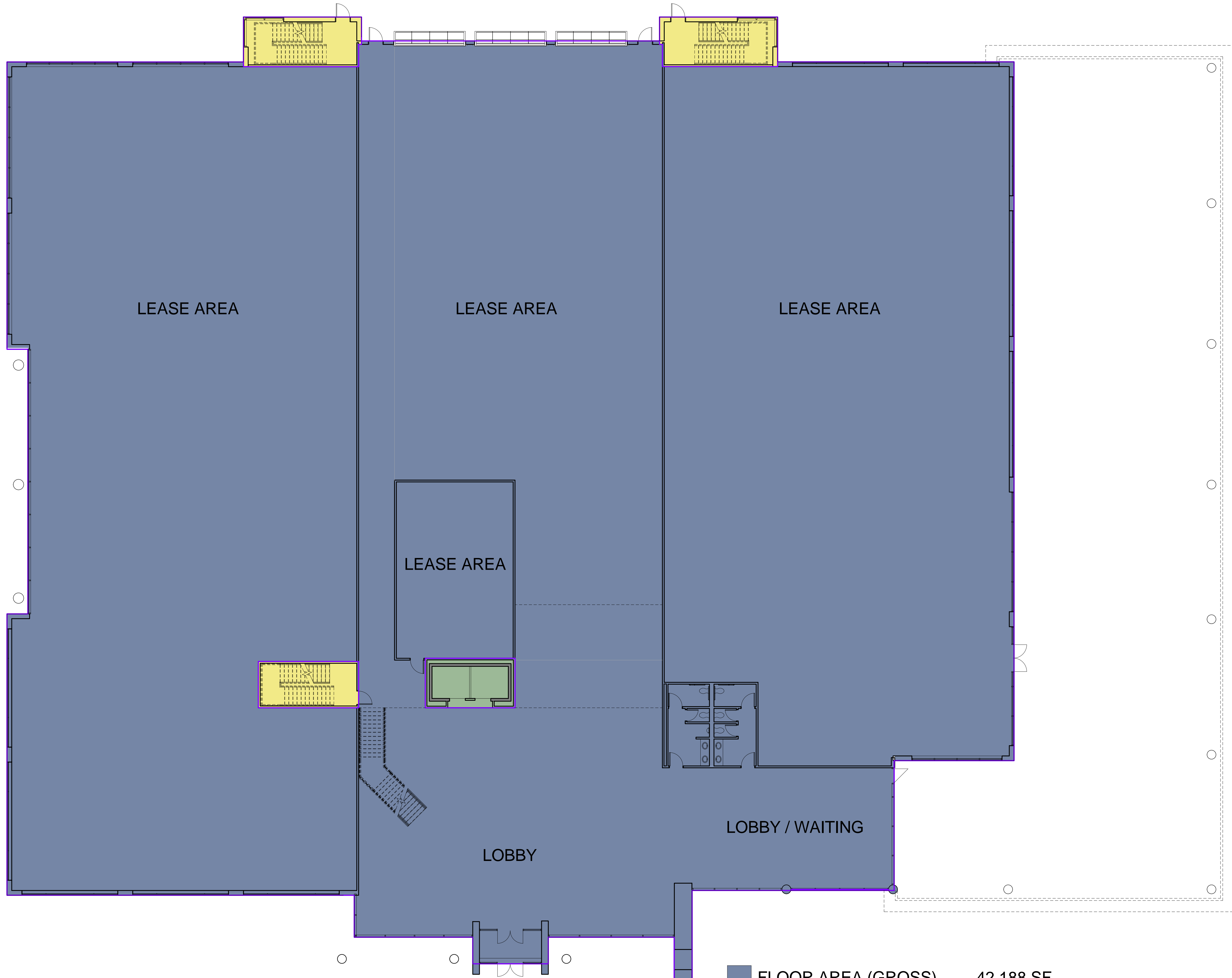
LOT	BUILDING AREA (SF)
15	9,300
16	14,000
17	11,200
18	5,950
19	6,375
20	9,075
TOTAL	55,900 SF
	25% INCREASE
	69,875 SF

PROPOSED BUILDING AREA

FIRST FLOOR	41,164
SECOND FLOOR	29,107
TOTAL	70,271
DIFFERENCE	<396>

PARKING

MEDICAL OFFICE SPACE =	321 CARS
64,271 SF ÷ 5 CARS/1,000 SF	
REHAB GYM FACILITY =	27 CARS
6,000 SF ÷ 4.5 CARS/1,000 SF	
TOTAL REQUIRED	348 CARS
TOTAL PROVIDED	361 CARS



 FLOOR AREA (GROSS)	42,188 SF
 STAIRWAYS	804 SF
 ELEVATOR	220 SF
FLOOR AREA (NET)	41,164 SF



17107 Chesterfield Airport Rd.
Suite 110
Chesterfield, MO 63005
T: 314.991.9993

ACI Boland Architects
St. Louis | Kansas City
Licensee's Certificate of Authority Number:
Missouri No.: 000958 (Expires: 12-31-2017)

CIVIL CONSULTANT

Shafer, Kline & Warren, Inc.
11250 Corporate Avenue
Lenexa, Kansas 66219
Licensee's Certificate of Authority Number:
#000143
913.888.7800

STRUCTURAL CONSULTANT

KPFF, Inc.
1610 Des Peres Road, Suite 100
St. Louis, Missouri 63131
Licensee's Certificate of Authority Number:
#2001010829
314.835.0524

MEP/FP CONSULTANT

G&W Engineering Corporation
138 Weldon Parkway
Maryland Heights, Missouri 63043
Licensee's Certificate of Authority Number:
#2002018767
314.737.4200

Proposed New Core & Shell Building For:
Lee's Summit Surgical
Lee's Summit, Missouri

Date	09.26.2017
Job Number	217507
Drawn By	KLM
Checked By	KTM

Revision		
Number	Date	Description



	FLOOR AREA (GROSS)	42,188 SF
	STAIRWAYS	804 SF
	ELEVATOR	220 SF
	MECH SHAFT	85 SF
	OPEN TO BELOW	11,972 SF
	FLOOR AREA (NET)	29,107 SF

17 PROPOSED SECOND FLOOR PLAN
3/32" = 1'-0"

Richard S. Clawson
Architect
MO# A-2002026549



17107 Chesterfield Airport Rd.
Suite 110
Chesterfield, MO 63005
T: 314.991.9993

ACI Boland Architects
St. Louis | Kansas City
Licensee's Certificate of Authority Number:
Missouri No.: 000958 (Expires: 12.31.2017)

CIVIL CONSULTANT

Shafer, Kline & Warren, Inc.
11250 Corporate Avenue
Lenexa, Kansas 66219
Licensee's Certificate of Authority Number:
#000143
913.888.7800

STRUCTURAL CONSULTANT

KPFF, Inc.
1610 Des Peres Road, Suite 100
St. Louis, Missouri 63131
Licensee's Certificate of Authority Number:
#2001010829
314.835.0524

MEP/FP CONSULTANT

G&W Engineering Corporation
138 Weldon Parkway
Maryland Heights, Missouri 63043
Licensee's Certificate of Authority Number:
#2002018767
314.737.4200

Proposed New Core & Shell Building For:
Lee's Summit Surgical
Lee's Summit, Missouri

Date	09.26.2017
Job Number	217507
Drawn By	KLM
Checked By	KTM

Revision		
Number	Date	Description