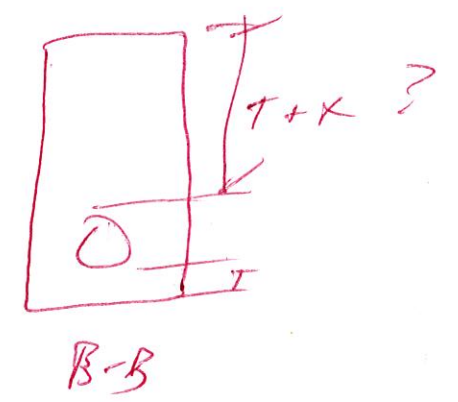
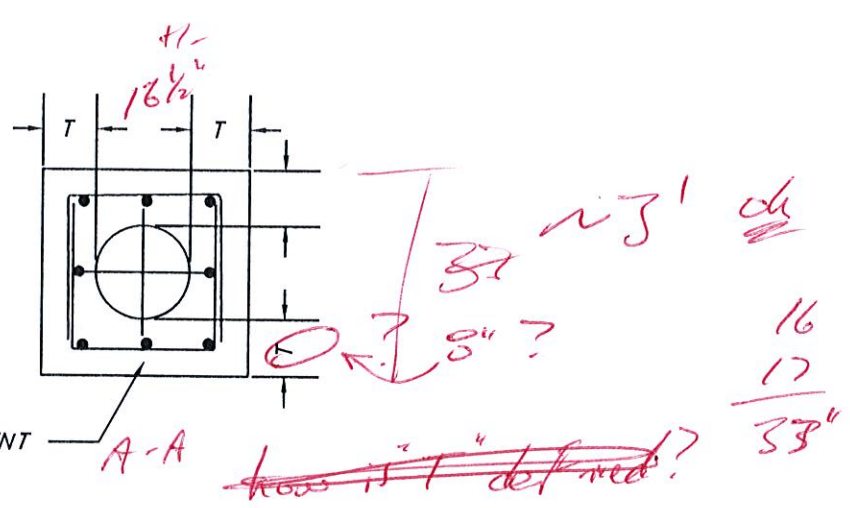
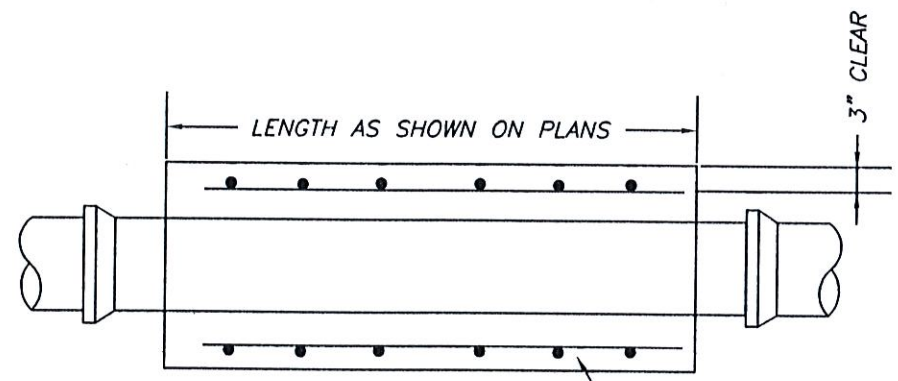


751 -
 #30 11+
 RC UNITS 5 k
 level?

8" Min.
 Extend to Bedrock

8" Min.
 Extend to Bedrock



NOTES:

1. INTERMEDIATE BELLS SHALL BE ENCASED.
2. REINFORCING STEEL SHALL BE #4 @ 12" O.C. EACH WAY WITH A MINIMUM REBAR LAP OF 12".

SANITARY PIPE ENCASEMENT
 Creek Crossing Sta. 2+13.60
 N.T.S.