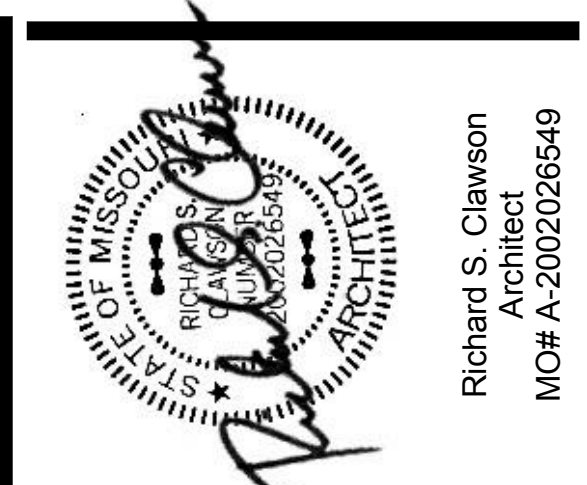


26 FIRST FLOOR  
3/32" = 1'-0"



17107 Chesterfield Airport Rd.  
Suite 110  
Chesterfield, MO 63005  
T: 314.991.9993

ACI Boland Architects  
St. Louis | Kansas City  
Licensee's Certificate of Authority Number:  
Missouri No. 000958 (Expires: 12.31.2017)

**CIVIL CONSULTANT**

Shafer, Kline & Warren, Inc.  
11250 Corporate Avenue  
Lenexa, Kansas 66219  
Licensee's Certificate of Authority Number:  
#000143  
913.888.7800

**STRUCTURAL CONSULTANT**

KPFF, Inc.  
1610 Des Peres Road, Suite 100  
St. Louis, Missouri 63131  
Licensee's Certificate of Authority Number:  
#2001018829  
314.835.0524

**MEP/FP CONSULTANT**

G&W Engineering Corporation  
133 Weldon Parkway  
Maryland Heights, Missouri 63043  
Licensee's Certificate of Authority Number:  
#2002018767  
314.797.4200

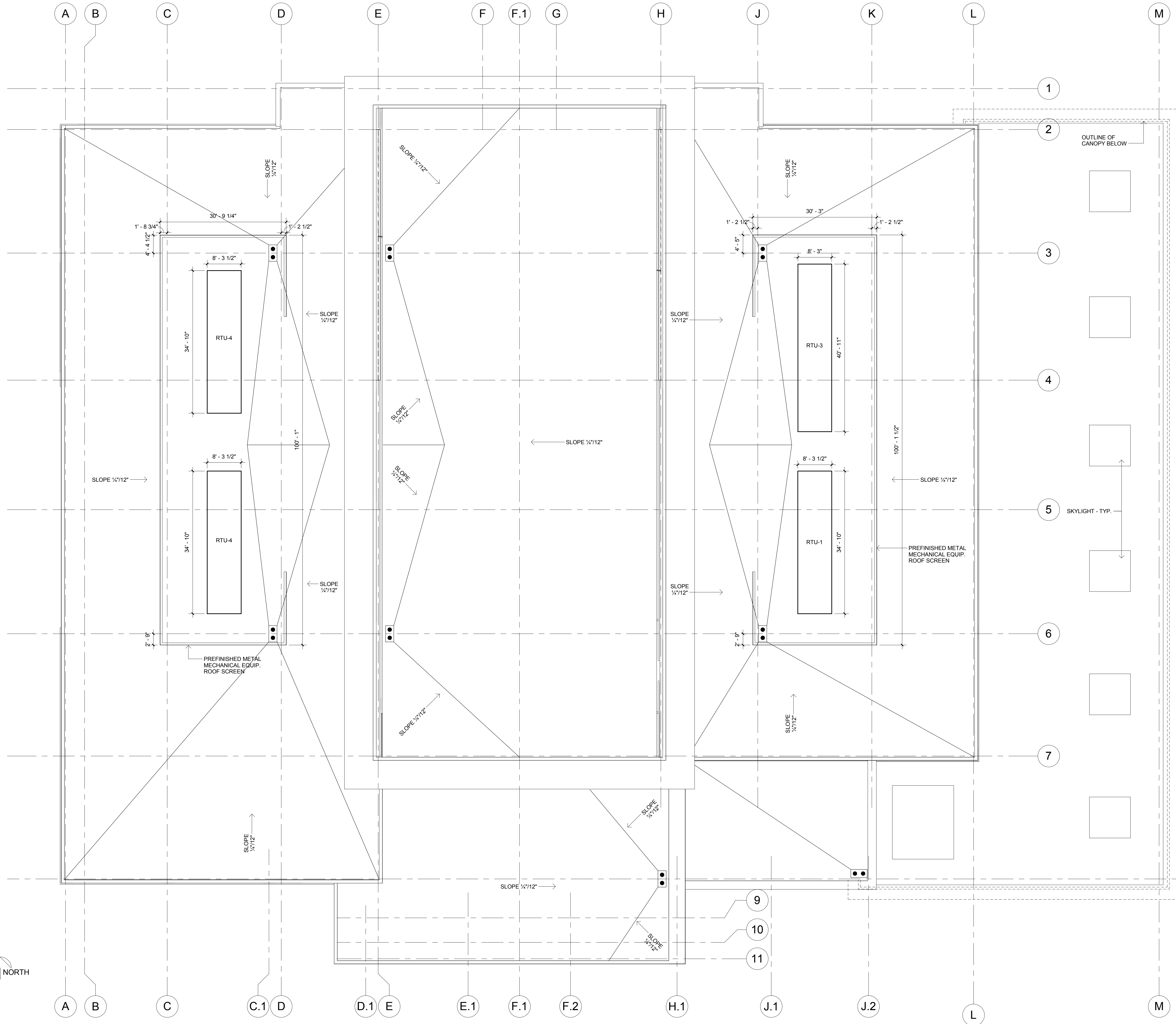
Proposed New Core & Shell Building For:  
**Lee's Summit Surgical**  
Lee's Summit, Missouri

Date: 09.22.2017  
Job Number: 217507  
Drawn By: AWRJ  
Checked By: RSC

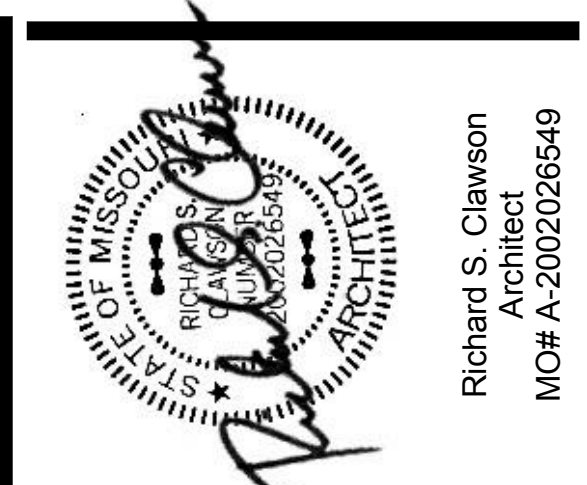
Revision		
Number	Date	Description







26 ROOF PLAN  
 3/32" = 1'-0"  
 NORTH



17107 Chesterfield Airport Rd.  
 Suite 110  
 Chesterfield, MO 63005  
 T: 314.991.9993

ACI Boland Architects  
 St. Louis | Kansas City  
 Licensee's Certificate of Authority Number:  
 Missouri No.: 000958 (Expires: 12.31.2017)

**CIVIL CONSULTANT**

Shafer, Kline & Warren, Inc.  
 11250 Corporate Avenue  
 Lenexa, Kansas 66219  
 Licensee's Certificate of Authority Number:  
 #000143  
 913.888.7800

**STRUCTURAL CONSULTANT**

KPFF, Inc.  
 1610 Des Peres Road, Suite 100  
 St. Louis, Missouri 63131  
 Licensee's Certificate of Authority Number:  
 #2001010829  
 314.835.0524

**MEP/FP CONSULTANT**

G&W Engineering Corporation  
 133 Weldon Parkway  
 Maryland Heights, Missouri 63043  
 Licensee's Certificate of Authority Number:  
 #2002018767  
 314.797.4200

Proposed New Core & Shell Building For:  
**Lee's Summit Surgical**  
 Lee's Summit, Missouri

Date	09.22.2017
Job Number	217507
Drawn By	AWRJ
Checked By	RSC

Revision		
Number	Date	Description





Richard S. Clawson  
Architect  
MO# A-2002026549



17107 Chesterfield Airport Rd.  
Suite 110  
Chesterfield, MO 63005  
T: 314.991.9993

ACI Boland Architects  
St. Louis | Kansas City  
Licensee's Certificate of Authority Number:  
Missouri No.: 000958 (Expires: 12.31.2017)

**CIVIL CONSULTANT**

Shafer, Kline & Warren, Inc.  
11250 Corporate Avenue  
Lenexa, Kansas 66219  
Licensee's Certificate of Authority Number:  
#000143  
913.888.7800

**STRUCTURAL CONSULTANT**

KPFF, Inc.  
1610 Des Peres Road, Suite 100  
St. Louis, Missouri 63131  
Licensee's Certificate of Authority Number:  
#2001018819  
314.835.0524

**MEP/FP CONSULTANT**

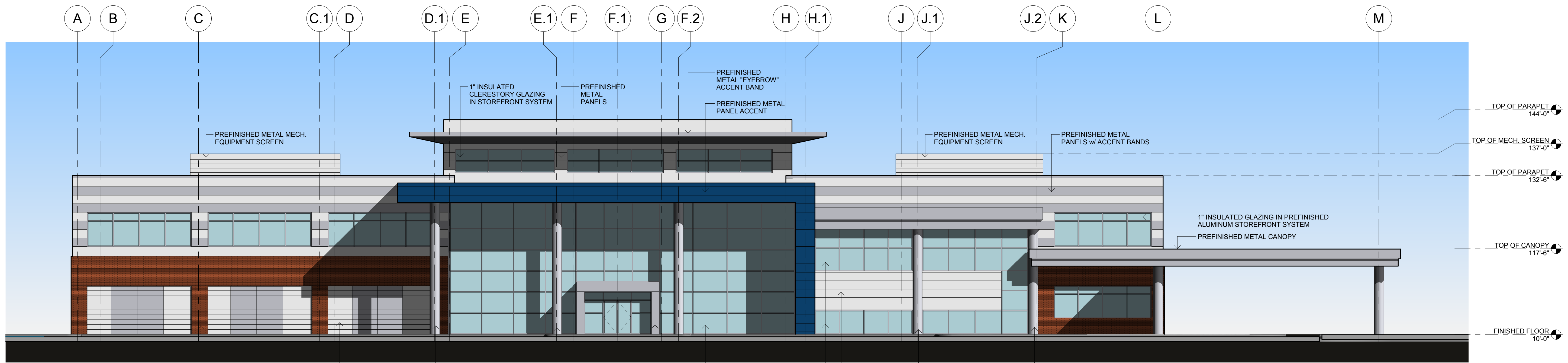
G&W Engineering Corporation  
138 Weldon Parkway  
Maryland Heights, Missouri 63043  
Licensee's Certificate of Authority Number:  
#2002018767  
314.737.4200

Proposed New Core & Shell Building For:  
**Lee's Summit Surgical**  
Lee's Summit, Missouri

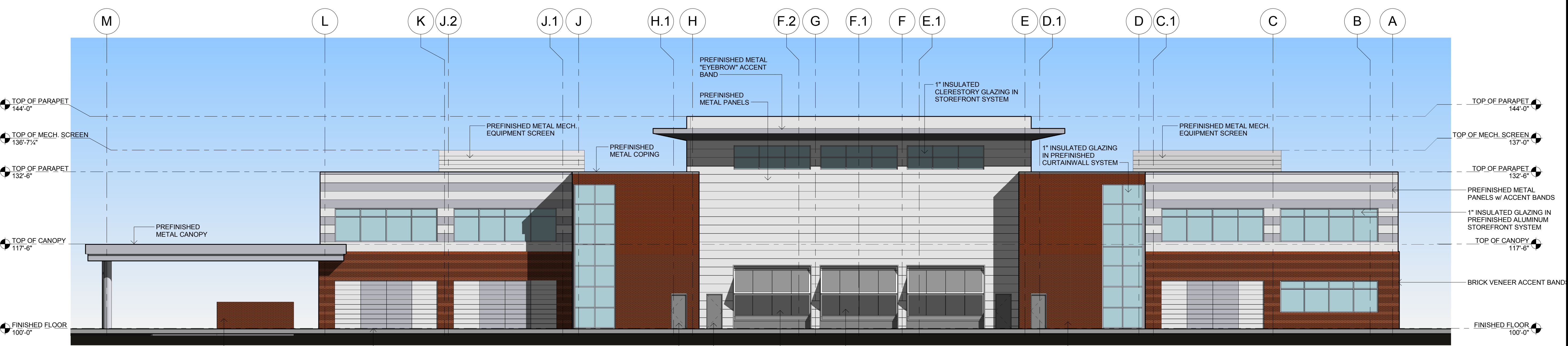
Date	09.22.2017
Job Number	217507
Drawn By	AWRJ
Checked By	RSC

Revision		
Number	Date	Description





23 SOUTH ELEVATION  
3/32" = 1'-0"



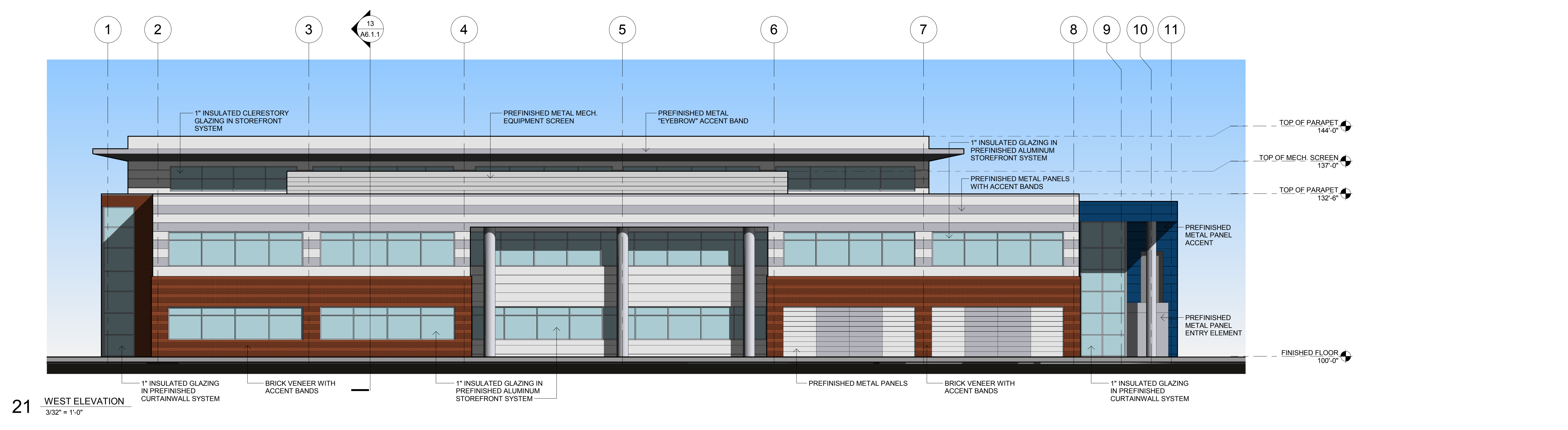
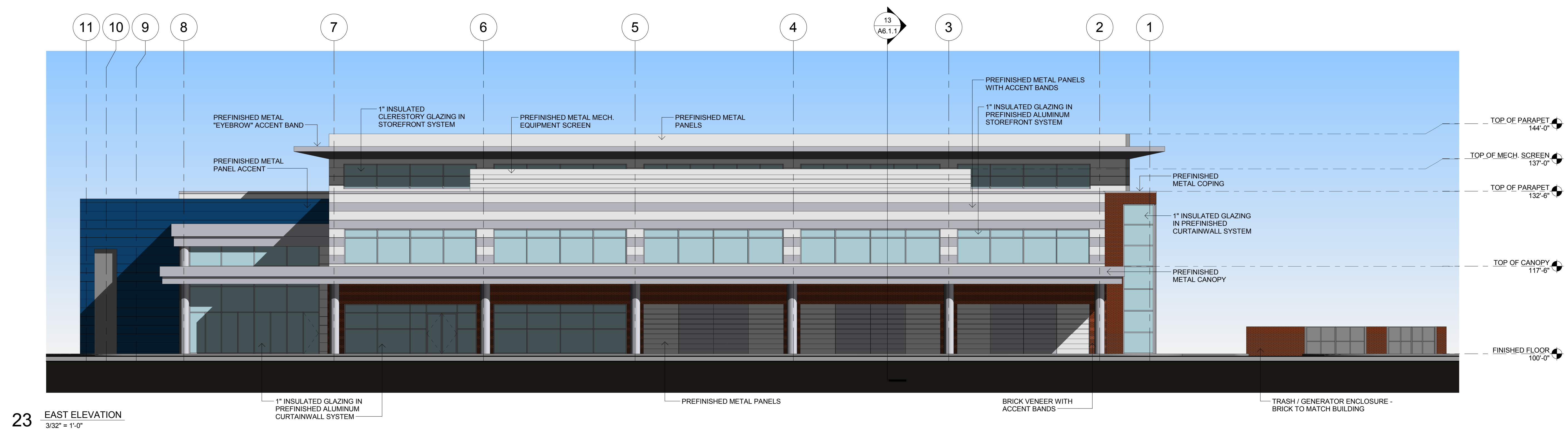
21 NORTH ELEVATION  
3/32" = 1'-0"

Proposed New Core & Shell Building For:  
**Lee's Summit Surgical**  
Lee's Summit, Missouri

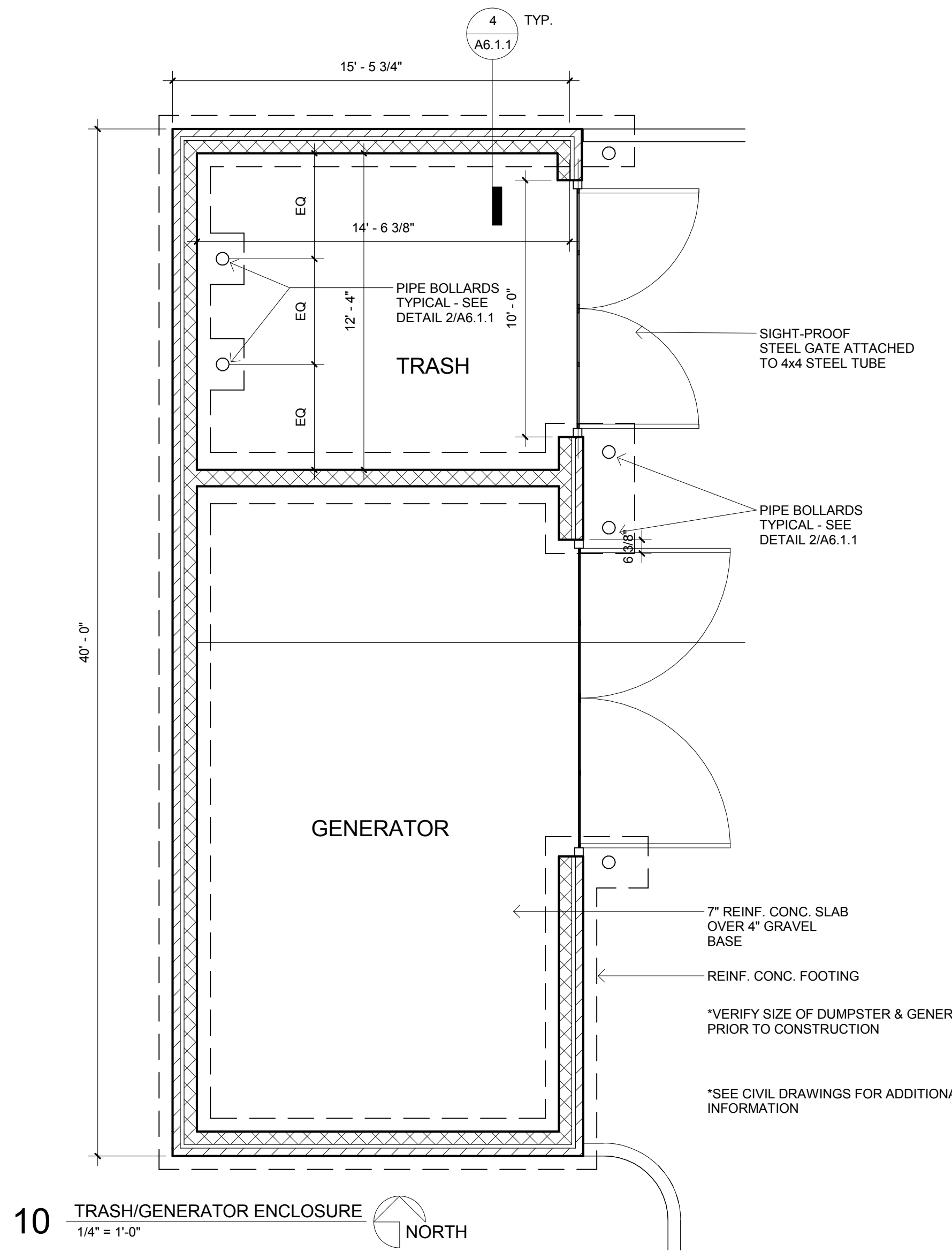
Date	09.22.2017
Job Number	217507
Drawn By	AWRJ
Checked By	RSC

Number	Date	Description

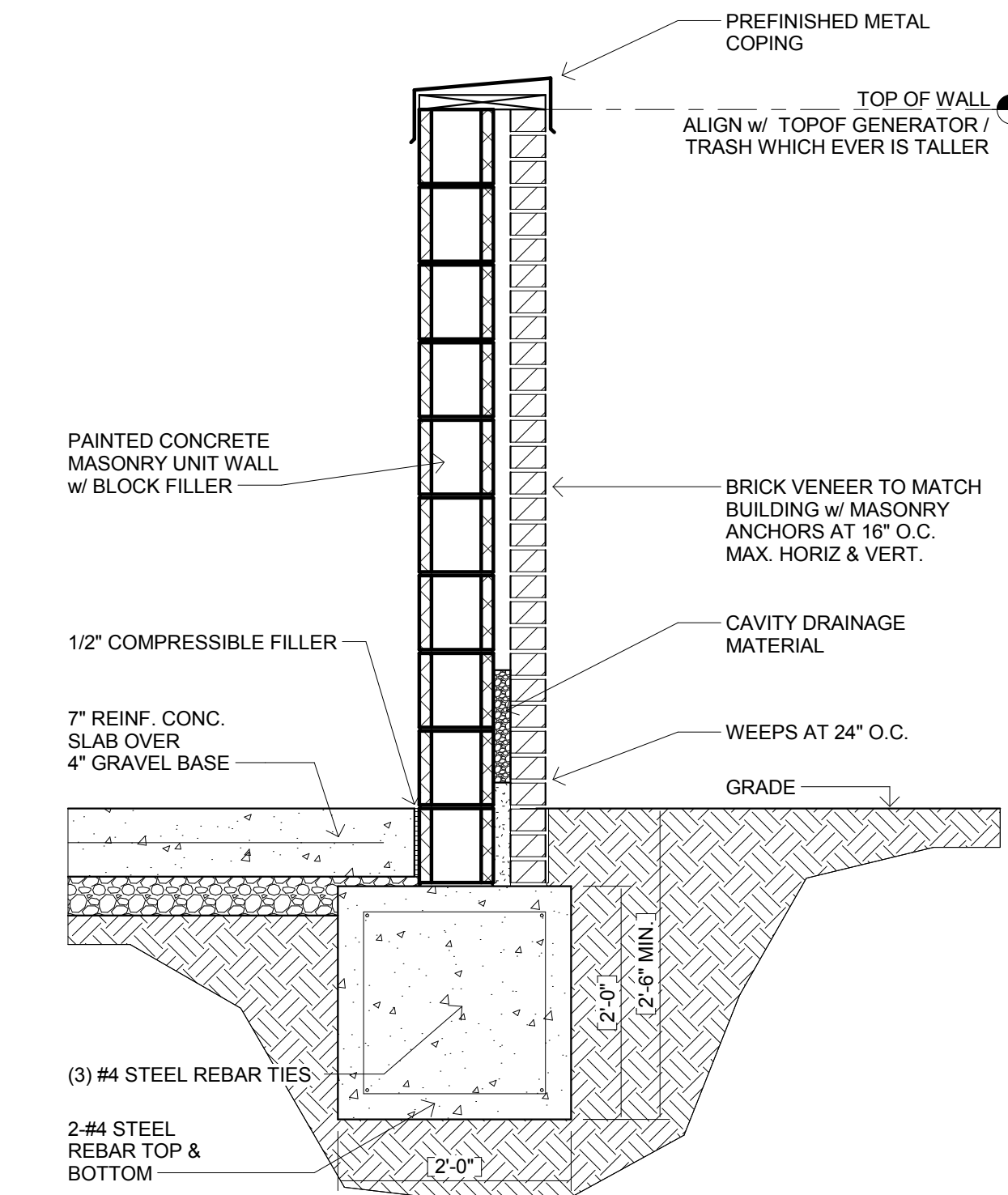




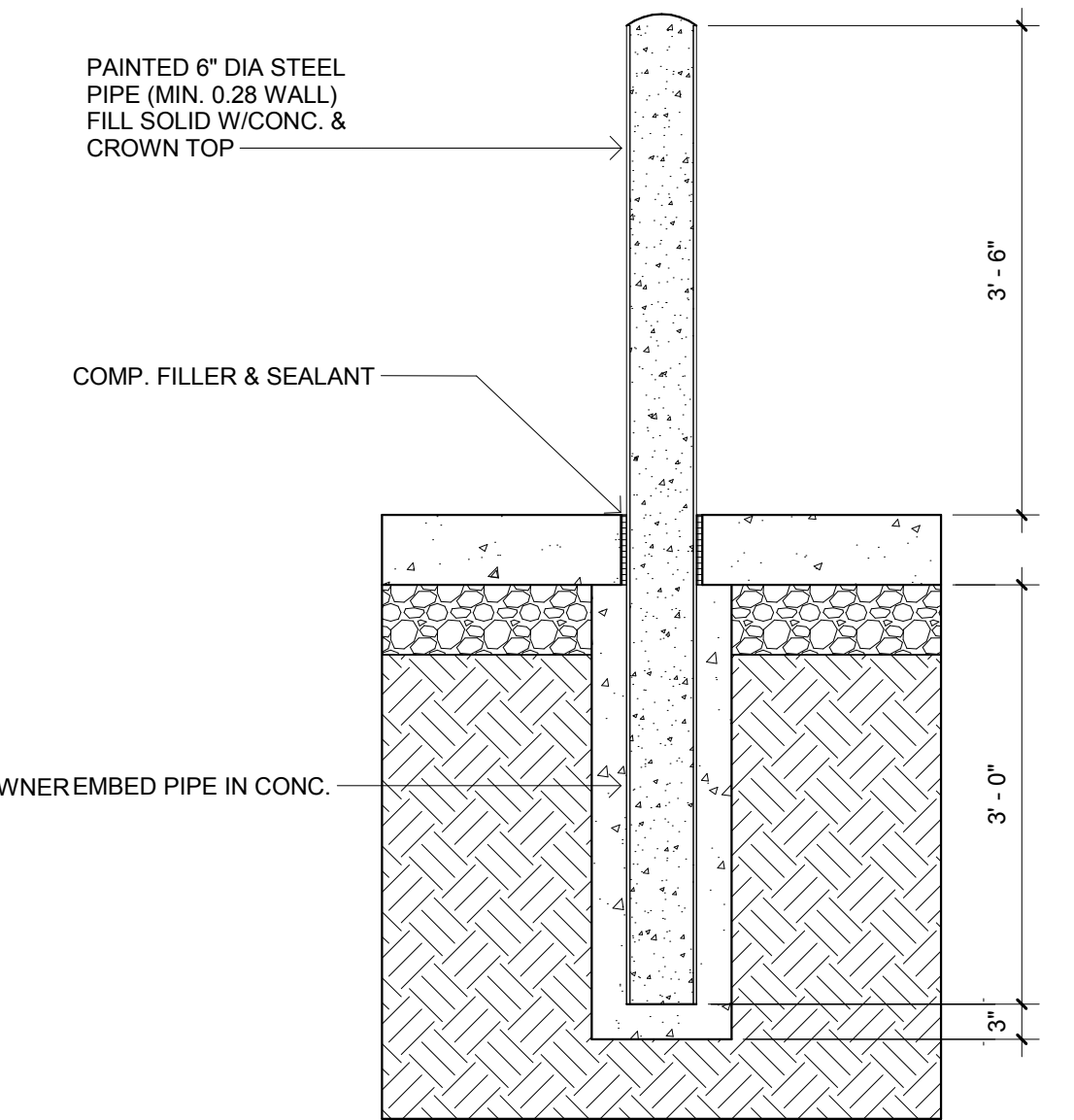




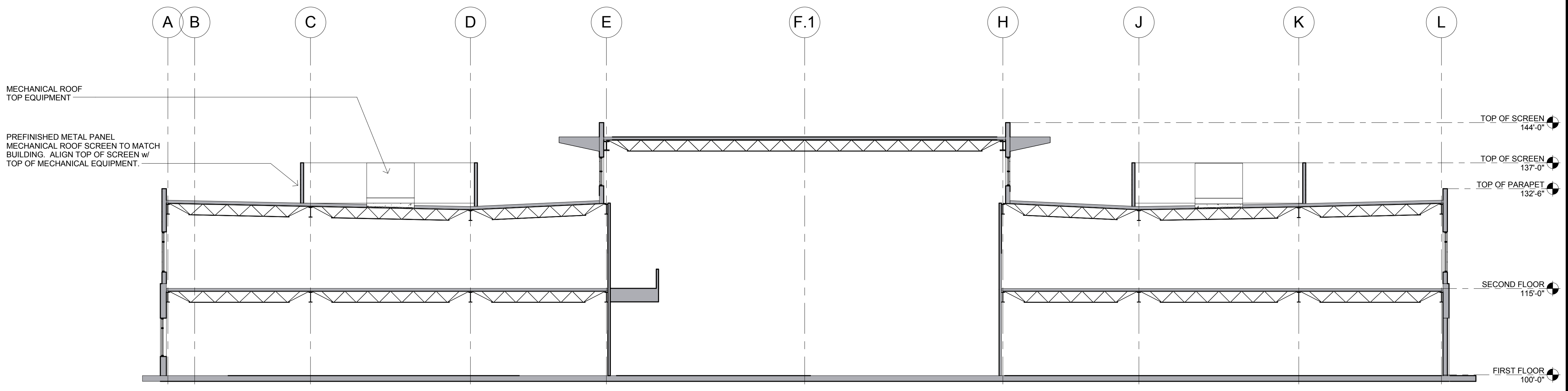
10 TRASH/GENERATOR ENCLOSURE  
1/4" = 1'-0" NORTH



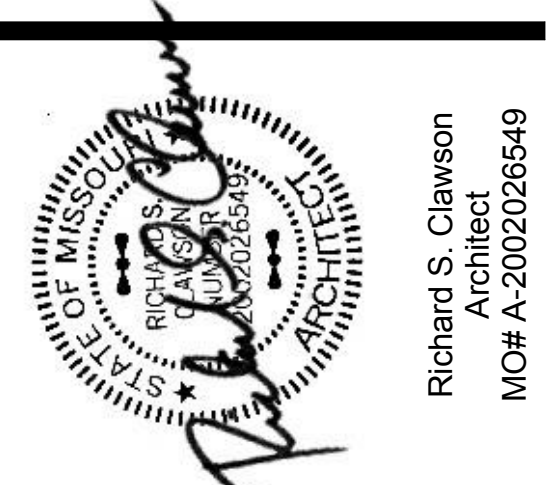
4 TRASH/GENERATOR ENCLOSURE SECTION  
3/4" = 1'-0"



2 PIPE BOLLARD DETAIL  
3/4" = 1'-0"



13 BUILDING SECTION LOOKING NORTH  
3/32" = 1'-0"



17107 Chesterfield Airport Rd.  
Suite 110  
Chesterfield, MO 63005  
T: 314.991.9993

ACI Boland Architects  
St. Louis | Kansas City  
Licensee's Certificate of Authority Number:  
Missouri No.: 000958 (Expires: 12.31.2017)

**CIVIL CONSULTANT**

Shafer, Kline & Warren, Inc.  
11250 Corporate Avenue  
Lenexa, Kansas 66219  
Licensee's Certificate of Authority Number:  
#000143  
913.888.7800

**STRUCTURAL CONSULTANT**

KPFF, Inc.  
1610 Des Peres Road, Suite 100  
St. Louis, Missouri 63131  
Licensee's Certificate of Authority Number:  
#2001018829  
314.835.0524

**MEP/FP CONSULTANT**

G&W Engineering Corporation  
138 Weldon Parkway  
Maryland Heights, Missouri 63043  
Licensee's Certificate of Authority Number:  
#2002018767  
314.797.4200

Proposed New Core & Shell Building For:  
**Lee's Summit Surgical**  
Lee's Summit, Missouri

Date	09/19/17
Job Number	217507
Drawn By	AWRJ
Checked By	RSC

Number	Date	Description