

1

2

3

4

5

D

C

B

A

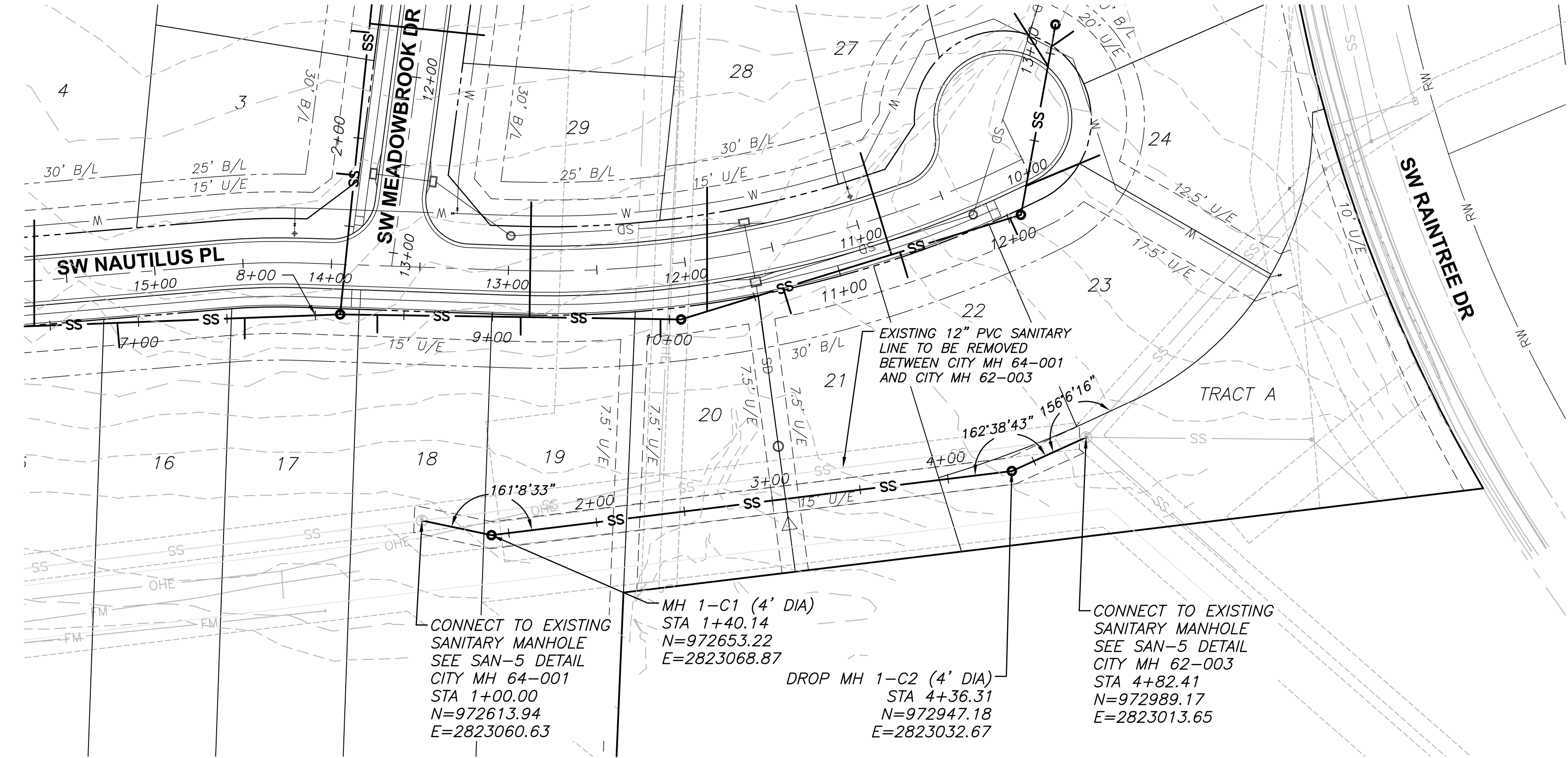
1

2

3

4

5



MANHOLE STRUCTURE NOTE:

1. PROPOSED MANHOLES SHALL CONFORM TO LEE'S SUMMIT STANDARD DETAILS (SAN-2, SAN-3, AND SAN-4).

GENERAL NOTES:

1. WATER MAINS AND SANITARY SEWER MAINS/STRUCTURES SHALL HAVE AT LEAST 10' OF HORIZONTAL SEPARATION FROM EDGE OF WATER PIPE TO EDGE OF SEWER PIPE OR SEWER STRUCTURE.
2. WATER MAINS AND SANITARY SEWERS SHALL HAVE AT LEAST 18" OF VERTICAL SEPARATION FROM EDGE OF PIPE TO EDGE OF PIPE. THE CROSSING SHALL BE ARRANGED SO THAT THE SEWER JOINTS WILL BE EQUIDISTANT AND AS FAR AS POSSIBLE FROM THE WATER MAIN JOINTS.
3. ALL SANITARY SEWER LATERALS SHALL HAVE A TRENCH CHECK, CONSISTING OF FLOWABLE BACKFILL, INSTALLED DURING CONSTRUCTION. REFER TO GENERAL NOTE 19 ON GENERAL LAYOUT SHEET FOR ADDITIONAL INFORMATION.

SANITARY SEWER STRUCTURE TABLE		
STRUCTURE	STATION & OFFSET	STREET NAME
MH 1-C1	13+04.19, 149.79' LT	SW NAUTILUS PL
MH 1-C2	10+66.35, 159.63' LT	SW NAUTILUS PL



3741 NE TROON DR  
LEE'S SUMMIT, MO 64064  
816.347.1100

MO STATE CERTIFICATE OF  
AUTHORITY #000856

PROJECT FOR

LANDROCK  
DEVELOPMENT, LLC

CREEKSIDE AT RAINTREE  
LOTS 1 THRU 31  
LEE'S SUMMIT, MISSOURI

B	04/20/2017	CITY RESUBMITTAL
A	03/08/2017	CITY SUBMITTAL
MARK	DATE	DESCRIPTION

PROJECT NUMBER	10028825-276408
ORIGINAL ISSUE	MARCH 7, 2017

PROJECT MANAGER	SIMON SUN
PROJECT ENGINEER	WILL NEDS, E.I.T.



SHEET NAME

SANITARY SEWER  
PLAN AND PROFILE  
LINE 1-C



SHEET NUMBER

01C-CR-SS-04

FILE NAME | 01C-CR-SS-04.dwg

PERMIT REVIEW DRAWINGS

