



3741 NE TROON DR
LEE'S SUMMIT, MO 64064
816.347.1100

MO STATE CERTIFICATE OF
AUTHORITY #000856

PROJECT FOR

**LANDROCK
DEVELOPMENT, LLC**

**CREEKSIDE AT RAINTREE
LOTS 1 THRU 31
LEE'S SUMMIT, MISSOURI**

| | | |
|------|------------|------------------|
| B | 04/20/2017 | CITY RESUBMITTAL |
| A | 03/08/2017 | CITY SUBMITTAL |
| MARK | DATE | DESCRIPTION |

| | |
|----------------|-----------------|
| PROJECT NUMBER | 10028825-276408 |
| ORIGINAL ISSUE | MARCH 7, 2017 |

| | |
|------------------|-------------------|
| PROJECT MANAGER | SIMON SUN |
| PROJECT ENGINEER | WILL NEDS, E.I.T. |



SHEET NAME

**STORM SEWER
DETAILS**

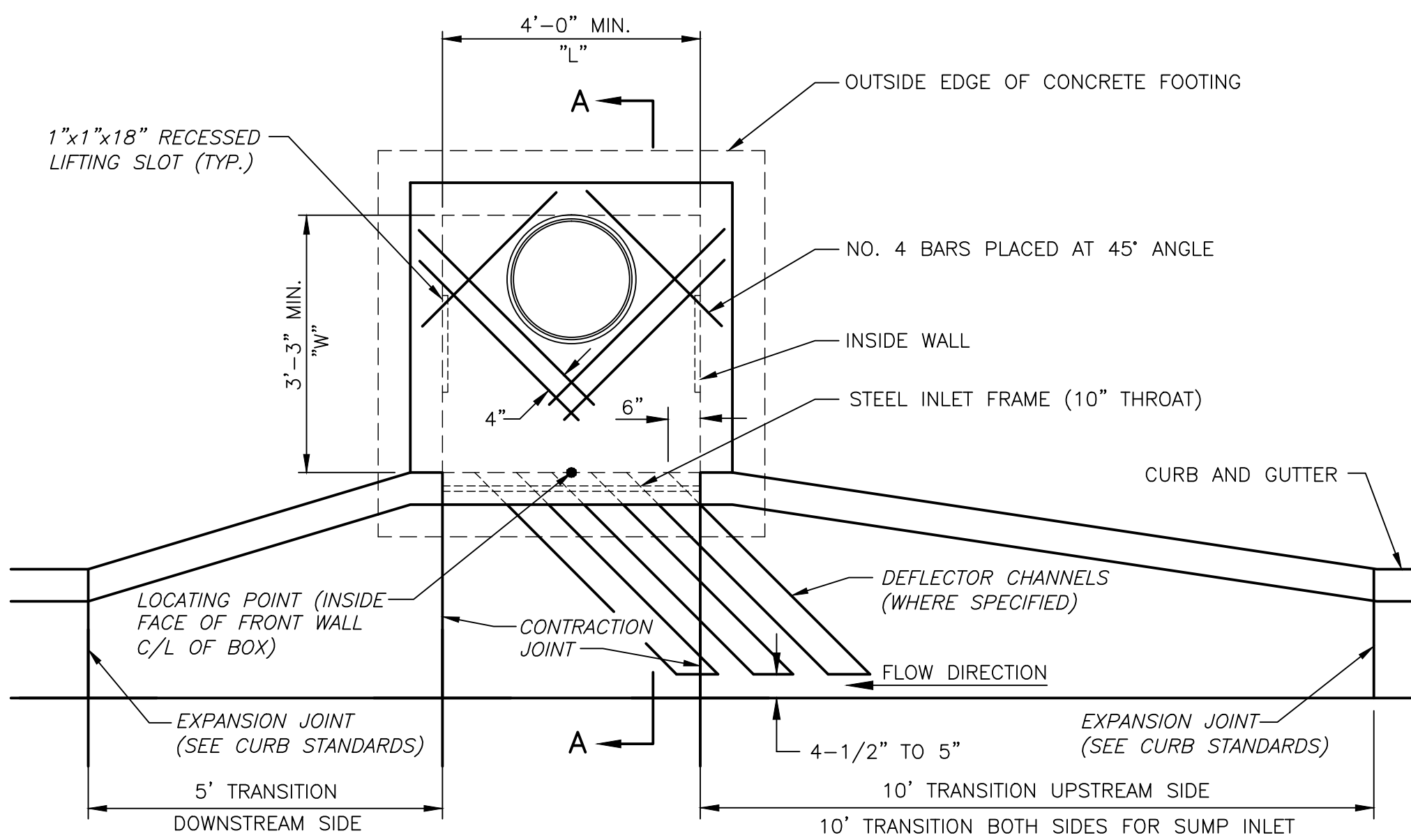
SCALE NO SCALE

SHEET NUMBER

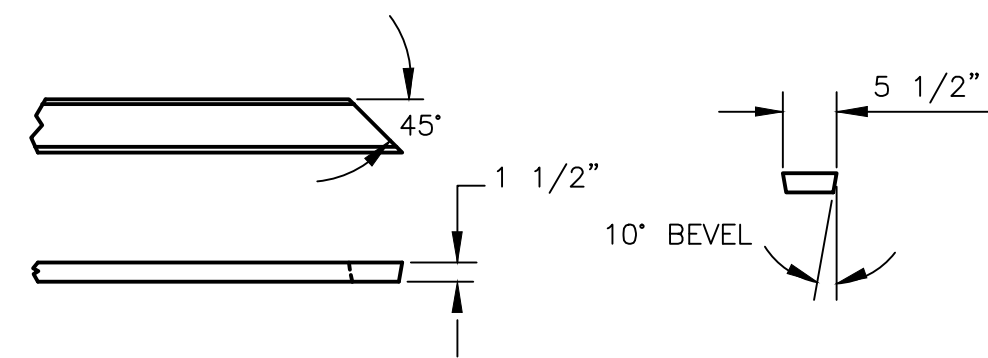
01C-CR-19

FILE NAME 01C-CR-19.dwg

PERMIT REVIEW DRAWINGS



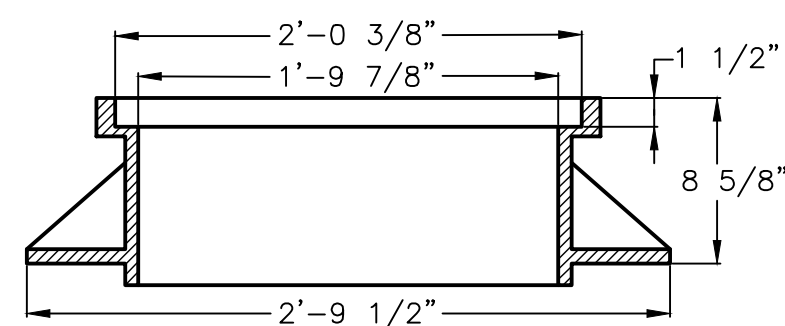
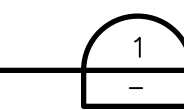
PLAN



DEFLECTOR CHANNEL FORM DETAIL

NOTE:
FORMS SHOULD BE WELL OILED AND HAND PLACED AT TIME OF POUR. AFTER INITIAL SET, REMOVE FORMS AND FINISH SURFACE OF CONCRETE.

APWA CURB INLET - TYPE 2

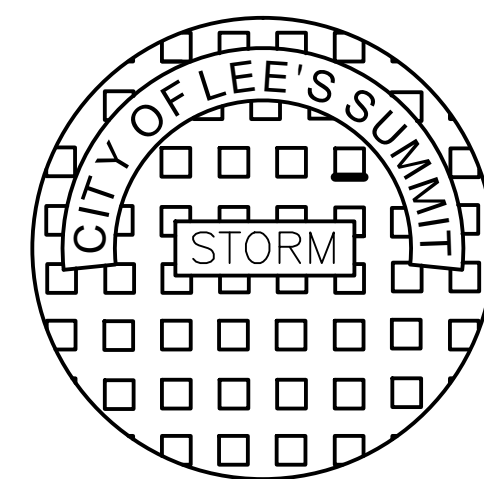
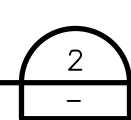


STANDARD 24" MANHOLE FRAME
LEE'S SUMMIT PART NO.: LS101A
MINIMUM WEIGHT = 250 LB
MATCHING COVER: LS101B

NOTE:
REFER TO WATER UTILITIES LIST OF APPROVED MANUFACTURER'S.

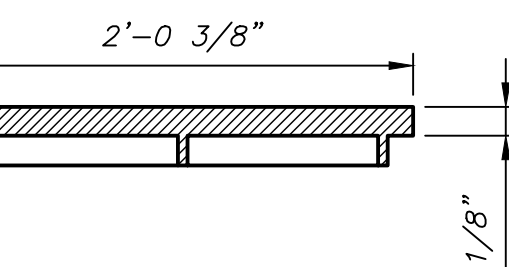
24" MANHOLE FRAME

NOT TO SCALE



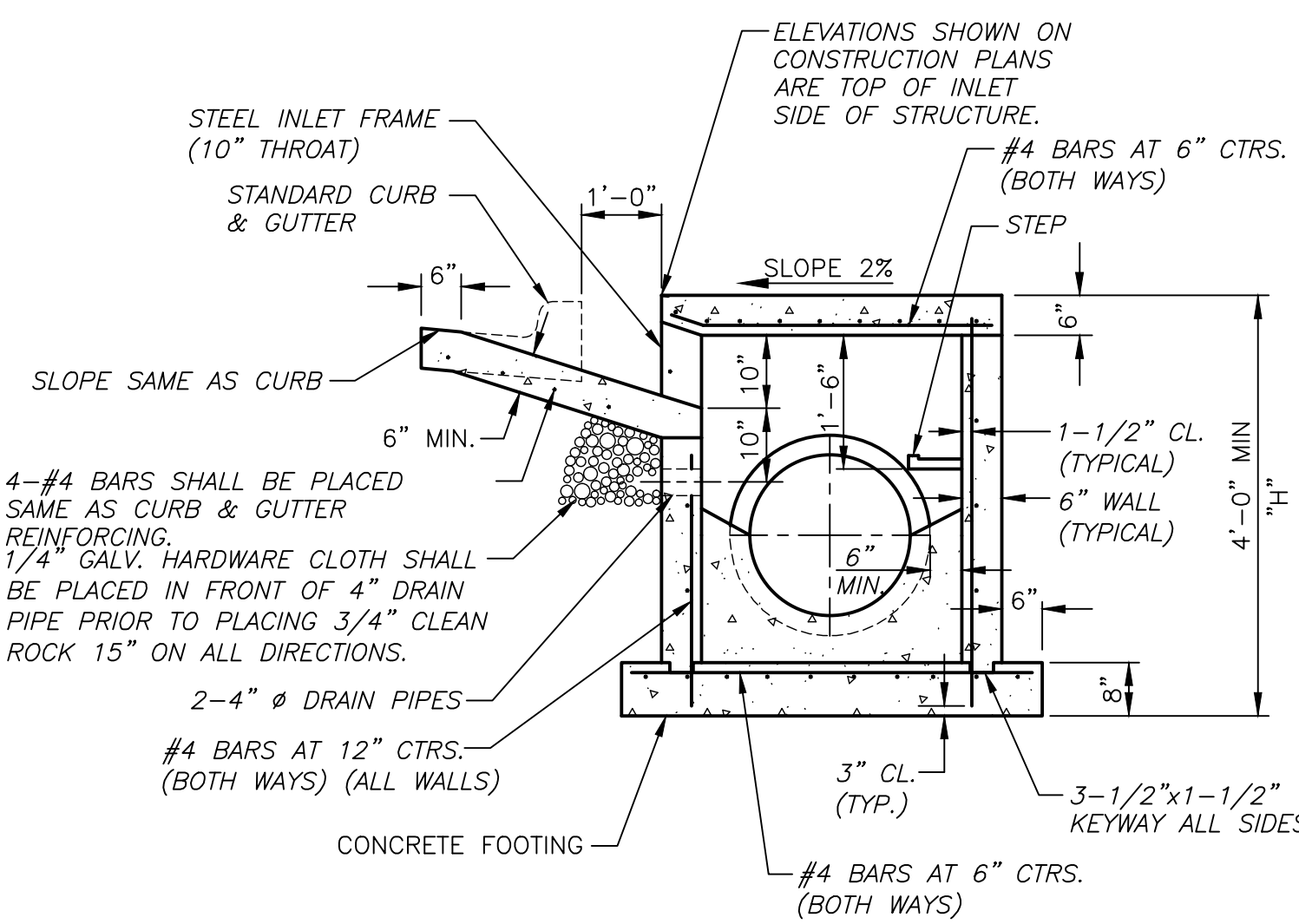
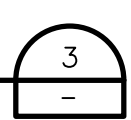
STANDARD 24" MANHOLE COVER
LEE'S SUMMIT PART NO.: LS101B
MINIMUM WEIGHT = 160 LB
MATCHING FRAME: LS101A
NOTE: PICK HOLES NOT SHOWN.

NOTE:
REFER TO WATER UTILITIES LIST OF APPROVED MANUFACTURER'S.



24" MANHOLE COVER

NOT TO SCALE

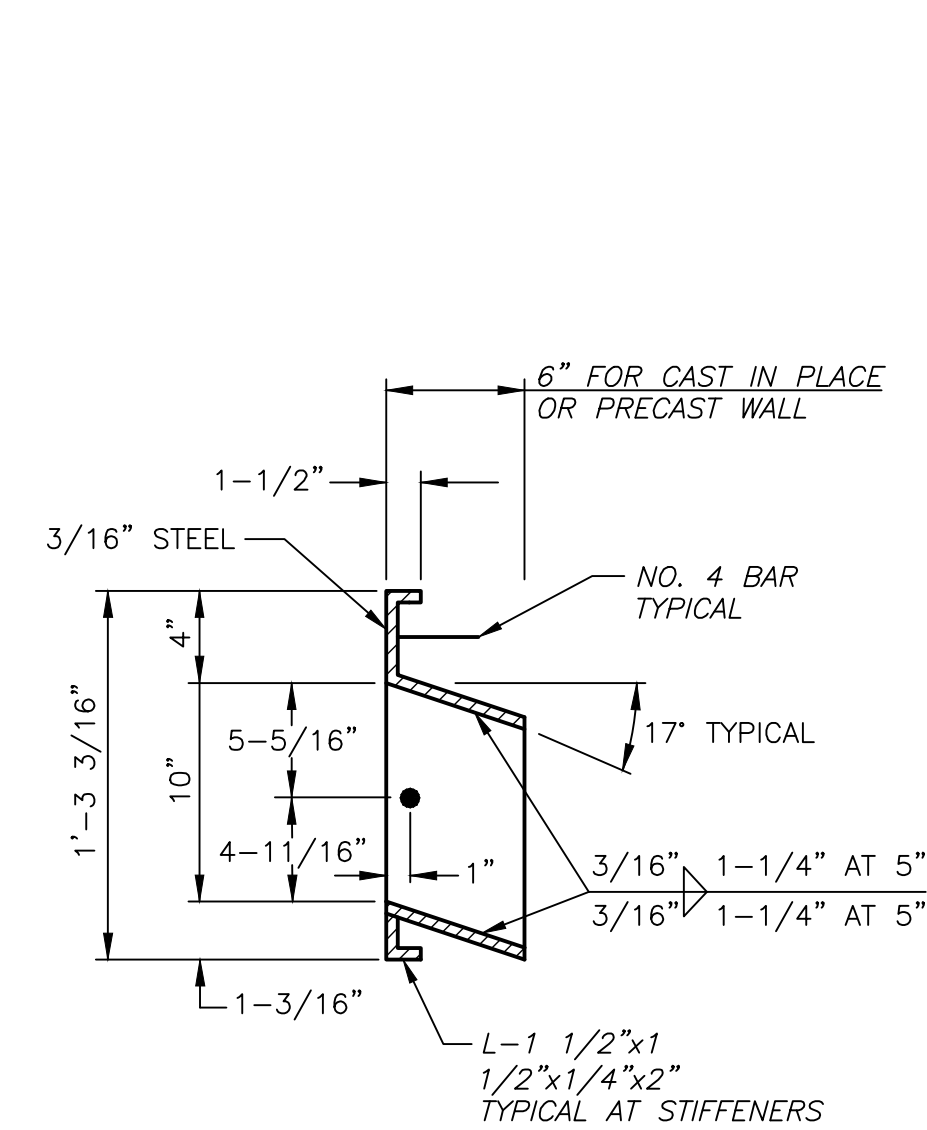


SECTION A-A

TYP

GENERAL CURB INLET NOTES:

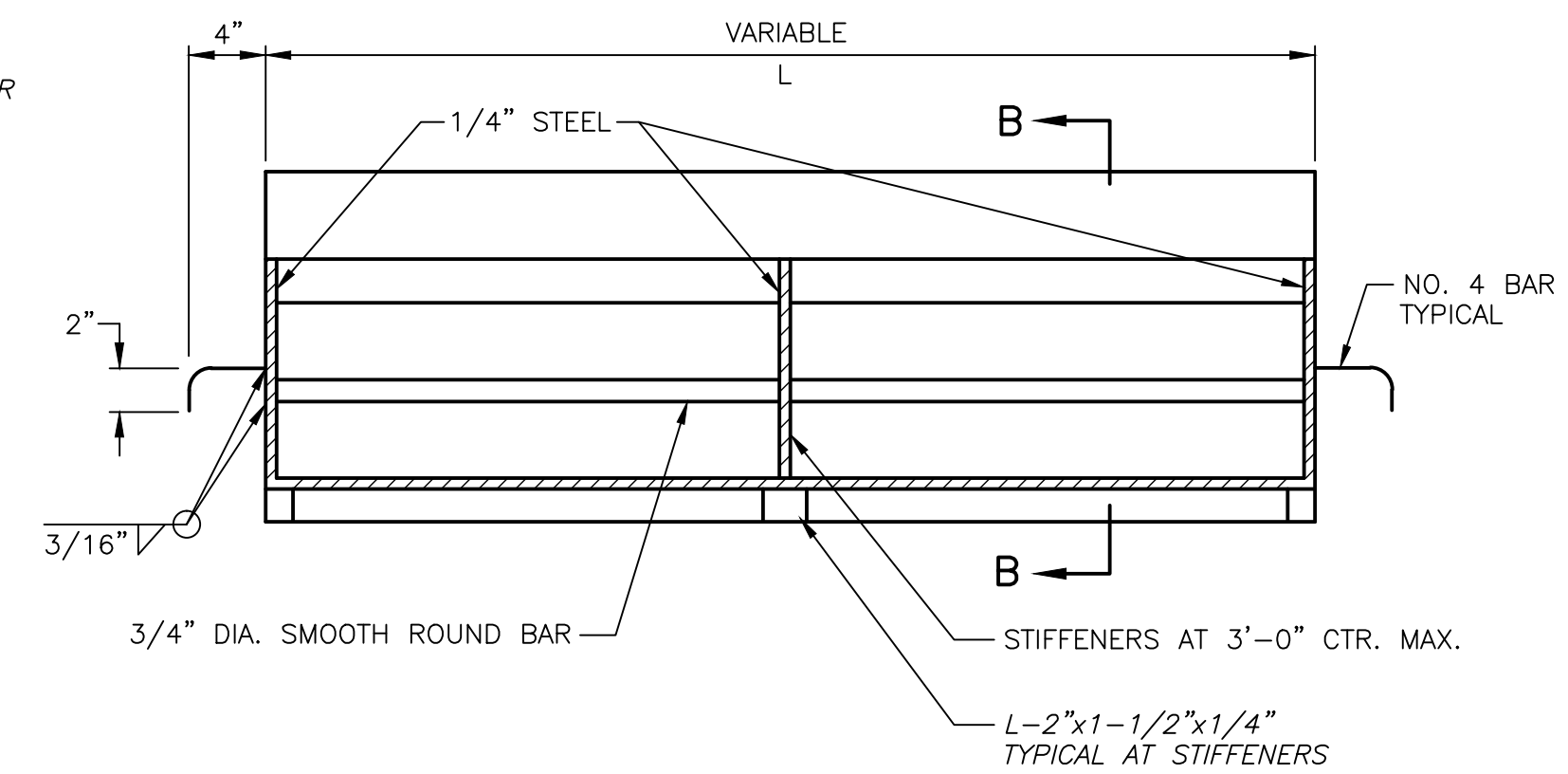
1. THE FIRST DIMENSION LISTED IN THE CONSTRUCTION NOTES IS THE "L" DIMENSION. THE SECOND DIMENSION IS THE "W" DIMENSION. FL'S LISTED ON THE PROJECT PLANS ARE LISTED AT THE INSIDE FACE OF THE WALL.
2. FLOOR OF INLET SHALL BE SHAPED WITH INVERT TO PROVIDE SMOOTH FLOW.
3. LOCATE MH RING AND COVER OVER OUTLET.
4. STEPS SHALL BE SPACED AT 1'-4" O.C. VERTICALLY.
5. BEVEL ALL EXPOSED EDGES WITH 3/4" CHAMFER OR 1/2" TOOLED EDGE.
6. ON-GRADE INLETS SHALL CONFORM TO THE STREET GRADE AND SUMP INLETS SHALL BE LEVEL.
7. THE SUMS OF "L" & "W" SHALL NOT EXCEED 14' WITHOUT SPECIAL DESIGN (SEE PROJECT PLANS FOR DETAILS).
8. RING & COVER TO BE NEENAH R-1537, CLAY & BAILEY #2020, DEETER #2016 OR APPROVED EQUAL. (CASTING MAY VARY BY MUNICIPALITY, REFER TO PLANS & CONTRACT DOCUMENTS).



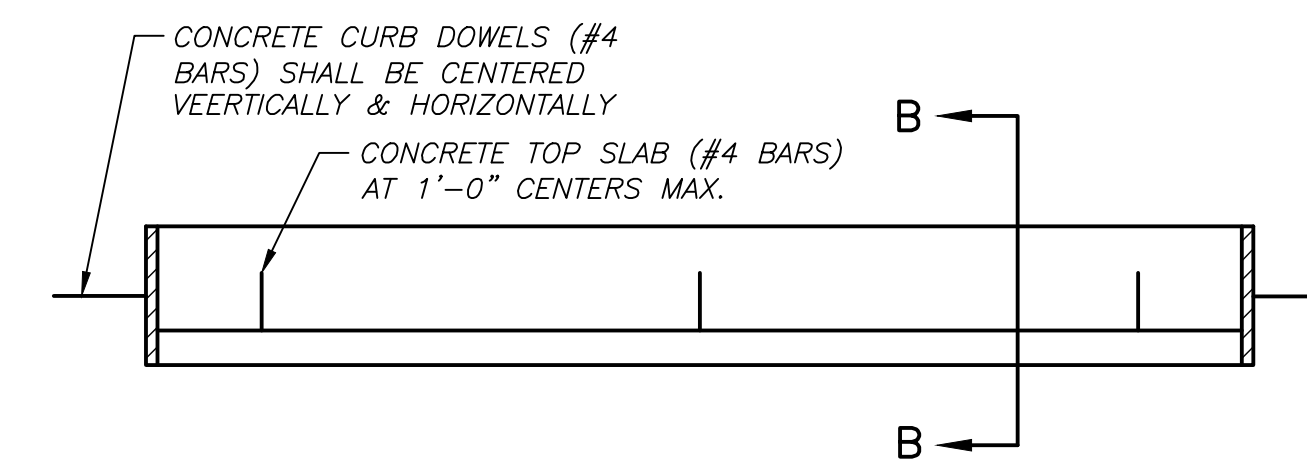
SECTION B-B

GENERAL STEEL INLET FRAME NOTES:

1. ALL WELDS SHALL BE PERFORMED IN ACCORDANCE WITH APPROPRIATE AWS SPECIFICATIONS AND PROCEDURES.
2. ALL WELDS ON EXPOSED SURFACES SHALL BE DRESSED SO AS TO PROVIDE A PLEASING FINISHED APPEARANCE.
3. THE ENTIRE FRAME SHALL BE PAINTED A SINGLE COAT OF CHEM-PRIME #37-77 PRIMER (RED) OR EQUAL.



FRONT VIEW



TOP VIEW

10" STEEL INLET FRAME



1

2

3

4

5