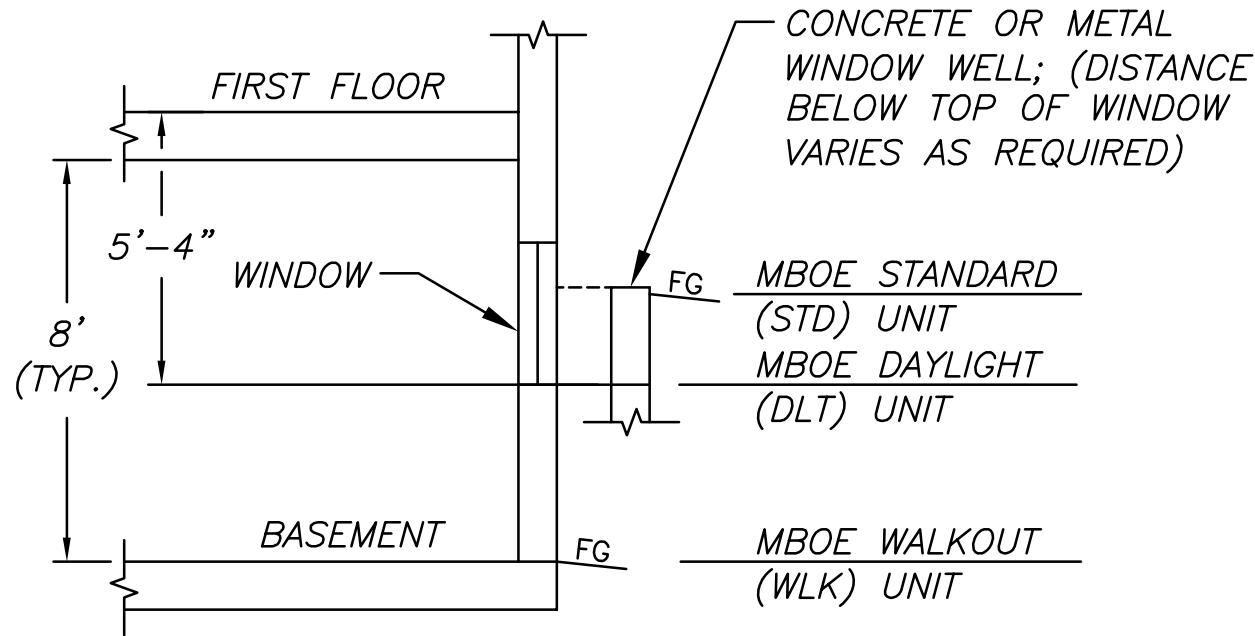


MASTER DRAINAGE PLAN NOTES:

- MINIMUM BUILDING OPENING ELEVATIONS (MBOE'S) SHOWN REPRESENT THE MINIMUM RECOMMENDED ELEVATIONS THAT WILL PROVIDE ADEQUATE POSITIVE STORM WATER DRAINAGE TO THE LOWEST POINT ON THE LOT FROM THE ANTICIPATED LOW SIDE OF THE BUILDING. THE HOME BUILDER SHALL BE RESPONSIBLE FOR ENSURING ADEQUATE POSITIVE DRAINAGE AWAY FROM ALL BUILDING OPENINGS TO PREVENT LOCALIZED STRUCTURE FLOODING.
- A DAYLIGHT OR STANDARD UNIT MAY BE CONSTRUCTED ON WALKOUT LOT, AND A STANDARD UNIT MAY BE CONSTRUCTED ON A DAYLIGHT LOT.
- A DAYLIGHT UNIT IS DEFINED AS A UNIT HAVING A WINDOW ON THE BASEMENT LEVEL WITH AT LEAST 5'-4" OF CLEARANCE FROM THE FINISHED FIRST FLOOR ELEVATION TO THE BOTTOM OF THE WINDOW. CLEARANCES LESS THAN 5'-4" ARE DEFINED AS STANDARD UNITS, WHETHER OR NOT A WINDOW WELL IS REQUIRED.
- REFER TO SANITARY SEWER SHEETS FOR SEWER MAIN AND LATERAL ELEVATIONS. SOME LOT MBOE ELEVATIONS ARE HIGHER TO ACCOUNT FOR GRAVITY BASEMENT SEWER SERVICE.
- ALL FRONT LOT ELEVATIONS ARE PROPOSED ELEVATIONS. REAR LOT ELEVATIONS ARE EXISTING ELEVATIONS UNLESS NOTED OTHERWISE WITH AN ELEVATION FOLLOWED BY (P).



TYPICAL UNIT SECTION
NOT TO SCALE

LEGEND:

- STD = STANDARD UNIT
DLT = DAYLIGHT UNIT
WLK = WALKOUT UNIT
MBOE = MINIMUM BUILDING OPENING ELEVATION
() = DIRECTION OF MBOE
~ = DRAINAGE PATH
FBD = FLAT BOTTOM DITCH
/// = 1% STORM WSE



3741 NE TROON DR
LEE'S SUMMIT, MO 64064
816.347.1100

MO STATE CERTIFICATE OF
AUTHORITY #000856

PROJECT FOR

LANDROCK
DEVELOPMENT, LLC

CREEKSIDE AT RAINTREE
LOTS 1 THRU 31
LEE'S SUMMIT, MISSOURI

B	04/20/2017	CITY RESUBMITTAL
A	03/08/2017	CITY SUBMITTAL
MARK	DATE	DESCRIPTION

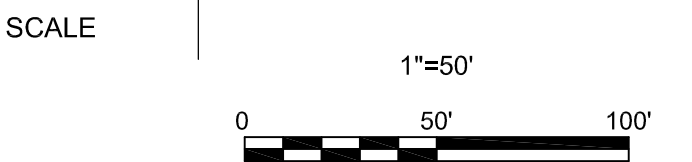
PROJECT NUMBER	10028825-276408
ORIGINAL ISSUE	MARCH 7, 2017

PROJECT MANAGER	SIMON SUN
PROJECT ENGINEER	WILL NEDS, E.I.T.



SHEET NAME

MASTER
DRAINAGE PLAN



SHEET NUMBER

01C-CR-08

FILE NAME | 01C-CR-08.dwg

PERMIT REVIEW DRAWINGS