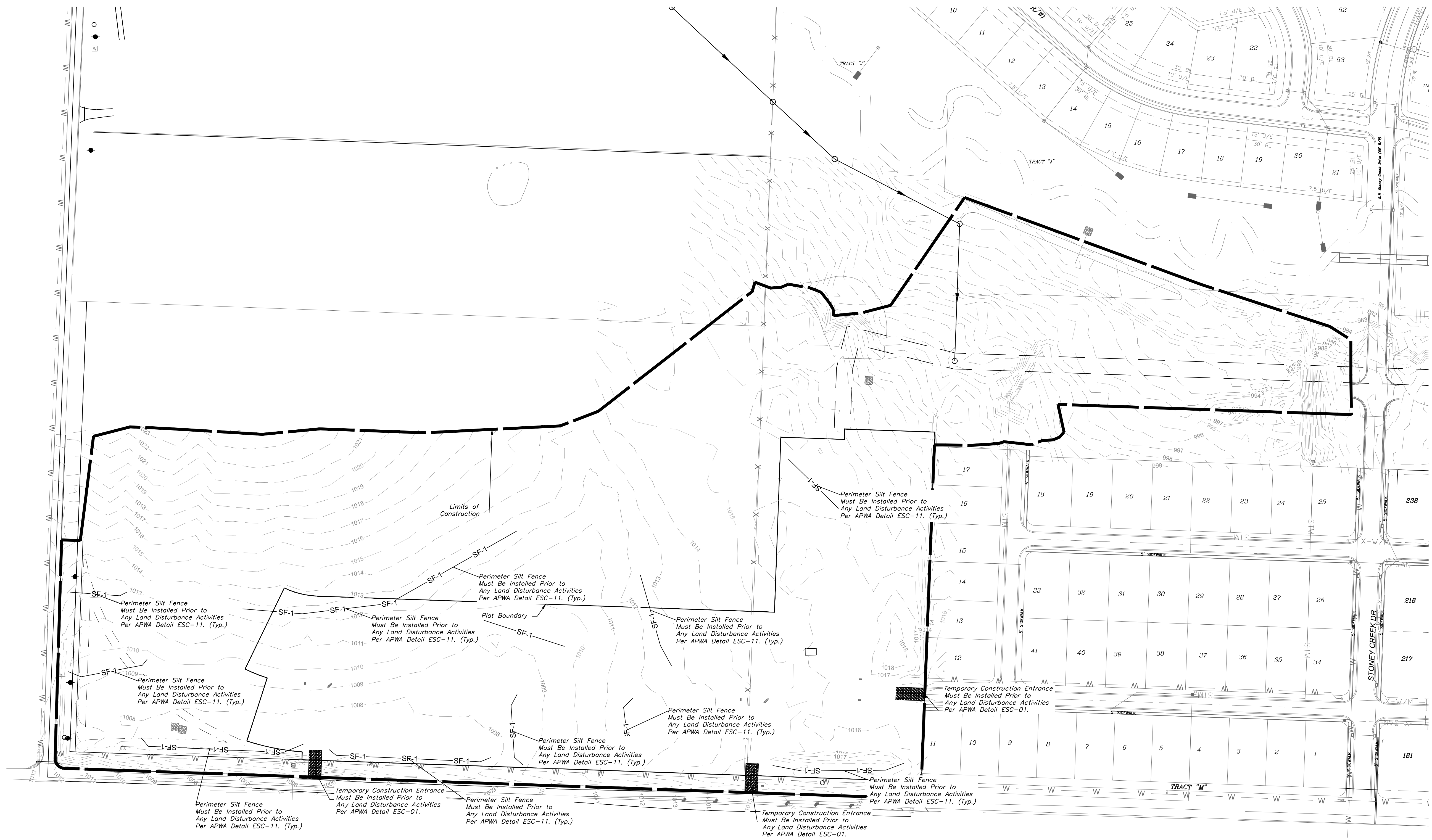


NOTES: The Land Disturbance Plans indicates the Final placement of erosion control devices. The contractor(s) may proceed with construction prior to the final placement of these devices by providing additional devices to control erosion on their items of work. These devices shall be maintained until the final devices are in place.

SILT FENCE PROTECTION
TO BE MAINTAINED BY CONTRACTOR

LEGEND			
PHASE 1 SILT FENCE	— SF-1 —	— SF-1 —	
PHASE 2 SILT FENCE	— SF-2 —	— SF-2 —	

DURING ALL PHASES OF CONSTRUCTION, INACTIVE AREA STABILIZATION METHODS AS DESCRIBED IN APWA SECTION 5111.3 SHALL BE USED TO CONTROL EROSION AND SILTATION.



The Manor at Stoney Creek - 2nd Plat
Lee's Summit, Jackson County, Missouri

Project: MANOR AT STONEY CREEK
Date: May 1, 2016

ESC PHASE 1 - Pre Clearing Plan
Construction Plans for:
The Manor at Stoney Creek - 2nd Plat
Lee's Summit, Jackson County, Missouri

Matthew J. Schlicht
MO PE 2006019708
KS PE 19071
OK PE 25226

REVISIONS	
REV. 5-1-17	