

3741 NE TROON DR
LEE'S SUMMIT, MO 64064
816.347.1100

MO STATE CERTIFICATE OF
AUTHORITY #000856

PROJECT FOR

LANDROCK
DEVELOPMENT, LLC

CREEKSIDE AT RAINTREE
LOTS 1 THRU 31
LEE'S SUMMIT, MISSOURI

B	05/01/2017	CITY RESUBMITTAL
A	03/08/2017	CITY SUBMITTAL
MARK	DATE	DESCRIPTION

PROJECT NUMBER	10028825-276408
ORIGINAL ISSUE	MARCH 7, 2017

PROJECT MANAGER	SIMON SUN
PROJECT ENGINEER	WILL NEDS, E.I.T.



SHEET NAME

WATER MAIN
DETAILS

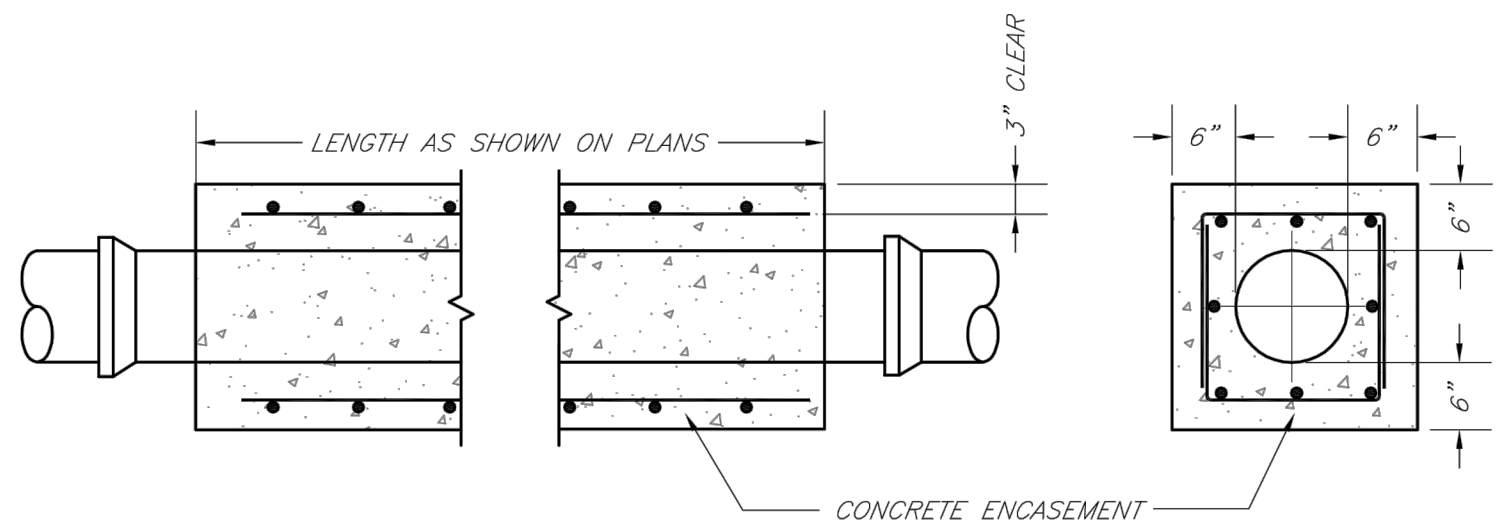
SCALE
NO SCALE

SHEET NUMBER

01C-CR-WA-05

FILE NAME
01C-CR-WA-05.dwg

PERMIT REVIEW DRAWINGS



NOTES:

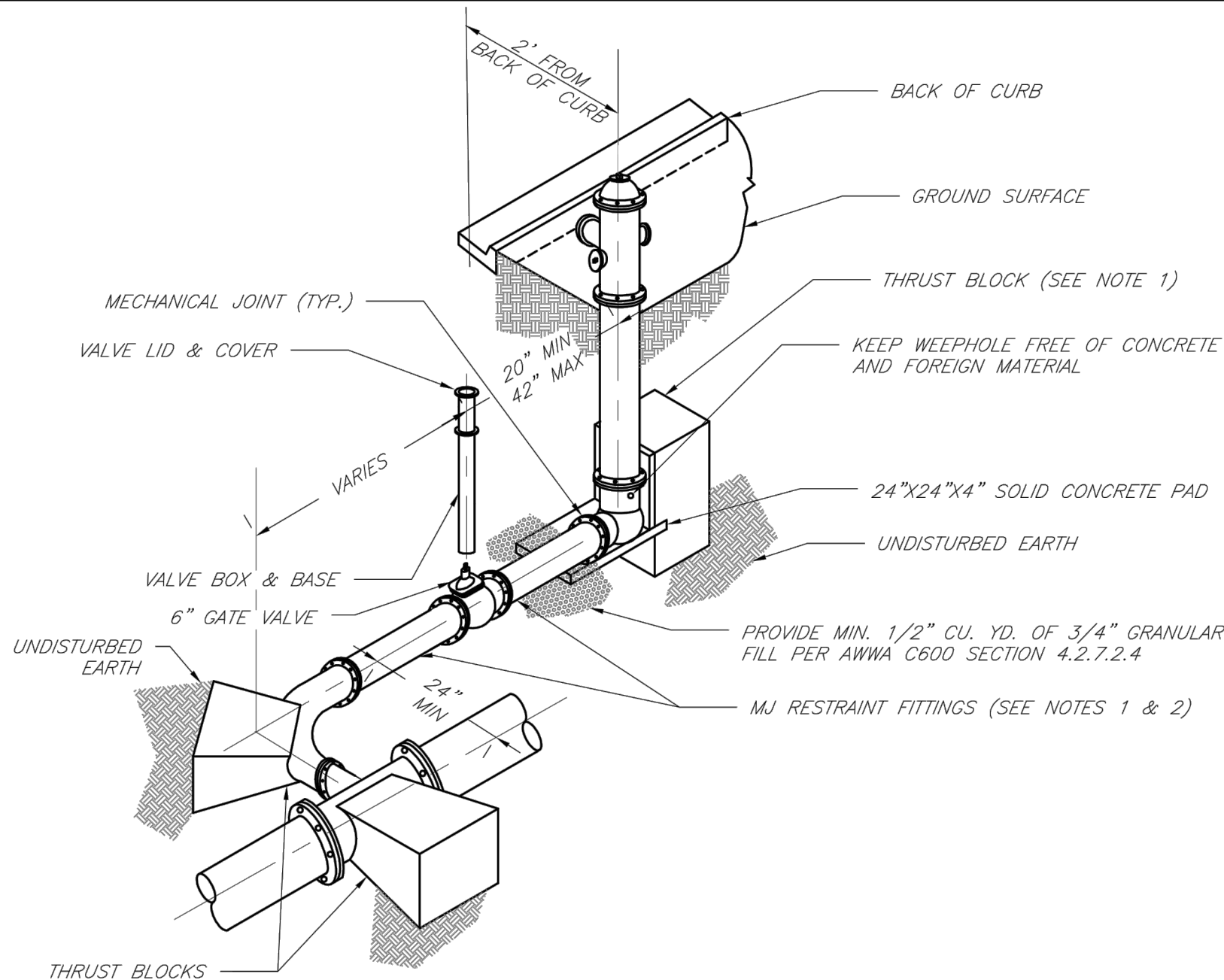
1. INTERMEDIATE BELLS SHALL BE ENCASED.
2. REINFORCING STEEL SHALL BE #4 @ 12" O.C. EACH WAY WITH A MINIMUM REBAR LAP OF 12".
3. THIS DETAIL IS FOR PIPES 12" AND SMALLER.



**LEE'S SUMMIT
MISSOURI**
PUBLIC WORKS ENGINEERING DIVISION | 220 SE GREEN STREET | LEE'S SUMMIT, MO 64063
WATER PIPE ENCASEMENT

Date: 02/13
Drawn By: JN
Checked By: DL
FILE: WAT-4
Rev: 1/14
Rev:

WAT-4



NOTES:

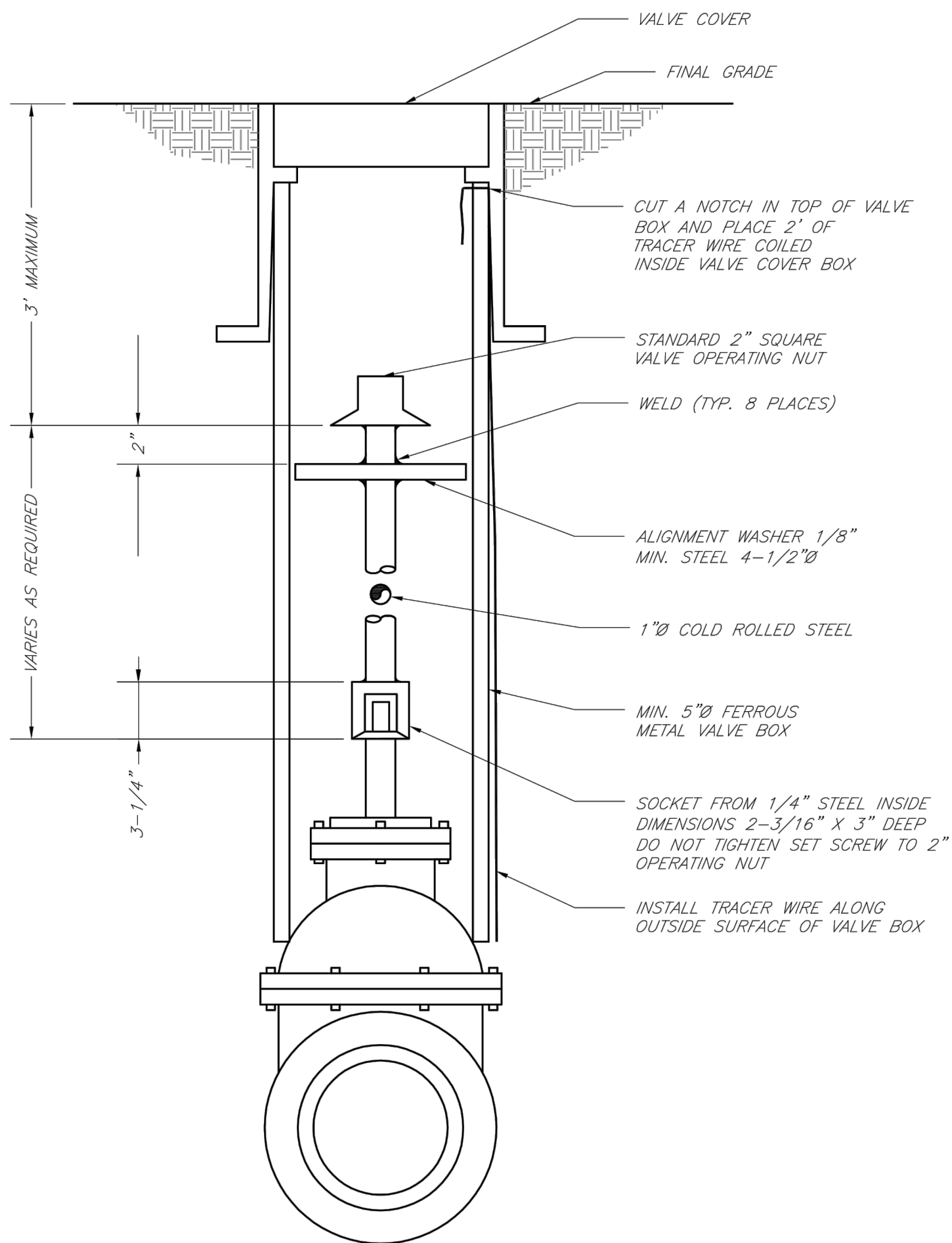
1. WHEN RETAINER GLANDS ARE USED IN LIEU OF MECHANICAL JOINT (MJ) RESTRAINT FITTINGS, HORIZONTAL THRUST BLOCKS ARE REQUIRED.
2. GATE VALVE MAY BE BOLTED DIRECTLY TO MJ RESTRAINT TEE.
3. SEE APPROVED PRODUCTS LIST FOR WATER UTILITIES FOR FIRE HYDRANT, VALVES, VALVE BOX LID, AND COVER.
4. BOTTOM HYDRANT FLANGE SHALL BE 2" TO 6" ABOVE FINISHED GRADE.
5. FOR STREETS WITHOUT CURBS FIRE HYDRANTS SHALL BE PLACED WITHIN 1 FOOT OF THE R/W LINE, BUT NOT MORE THAN 10' FROM EDGE OF PAVEMENT. FIRE HYDRANT SHALL NOT BE PLACED IN BOTTOM OF DITCH.
6. HYDRANT SHALL BE ROTATED AS DIRECTED BY INSPECTOR.



**LEE'S SUMMIT
MISSOURI**
PUBLIC WORKS ENGINEERING DIVISION | 220 SE GREEN STREET | LEE'S SUMMIT, MO 64063
HYDRANT WITH 90 DEGREE BEND

Date: 02/13
Drawn By: JN
Checked By: DL
FILE: WAT-8
Rev: 1/14
Rev:

WAT-8



**LEE'S SUMMIT
MISSOURI**
PUBLIC WORKS ENGINEERING DIVISION | 220 SE GREEN STREET | LEE'S SUMMIT, MO 64063
VALVE STEM EXTENSION AND VALVE BOX

Date: 02/13
Drawn By: JN
Checked By: DL
FILE: WAT-9
Rev: 1/14
Rev:

WAT-9