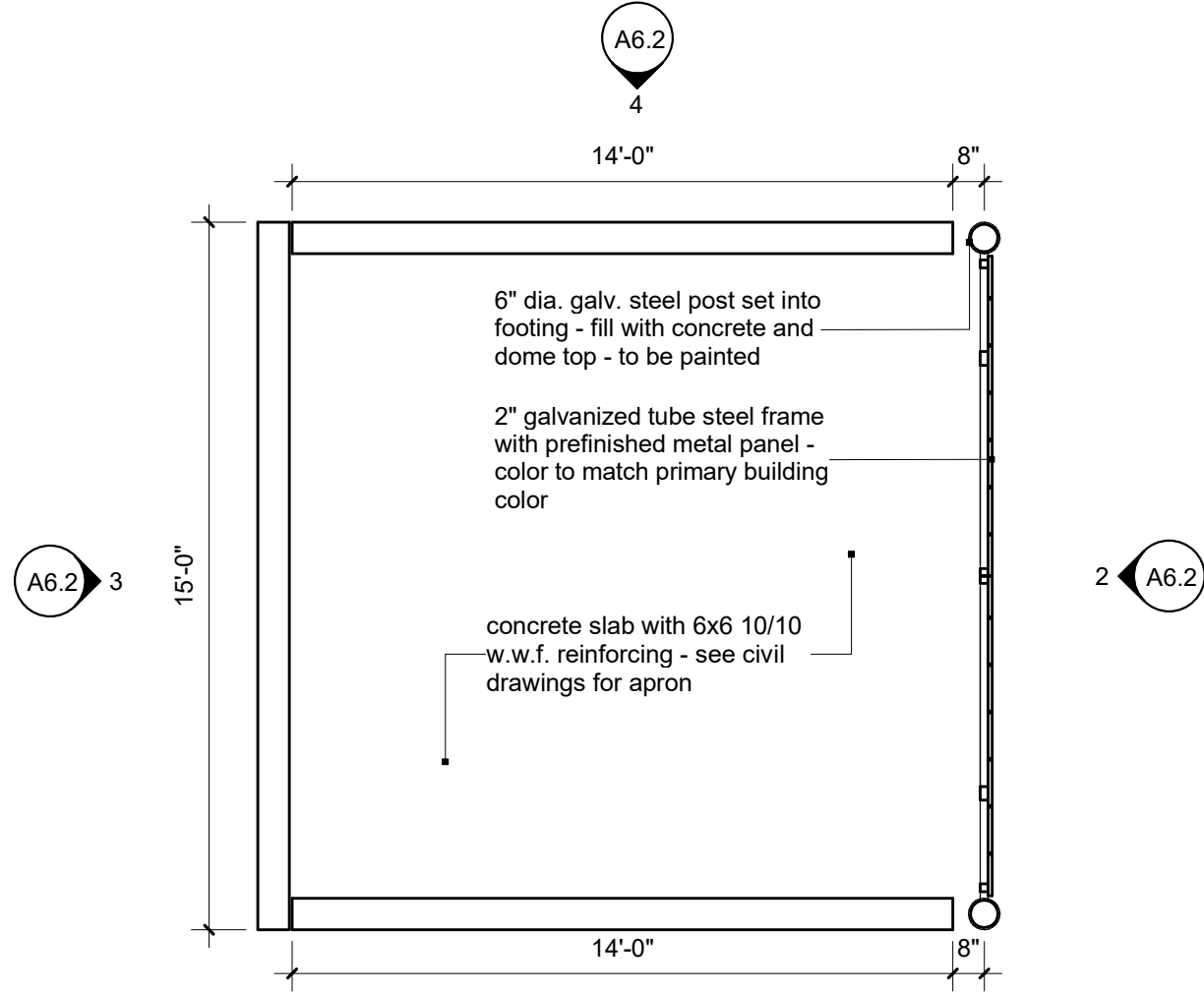


C:\Users\David\Documents\REV\TLBP17014 - LBP - dm.rvt 3/30/2017 1:21:28 PM

4301 Indian Creek Parkway  
Overland Park, KS 66207  
phone: 913.451.9390  
f a x : 913.451.9391  
www.davidsonae.com

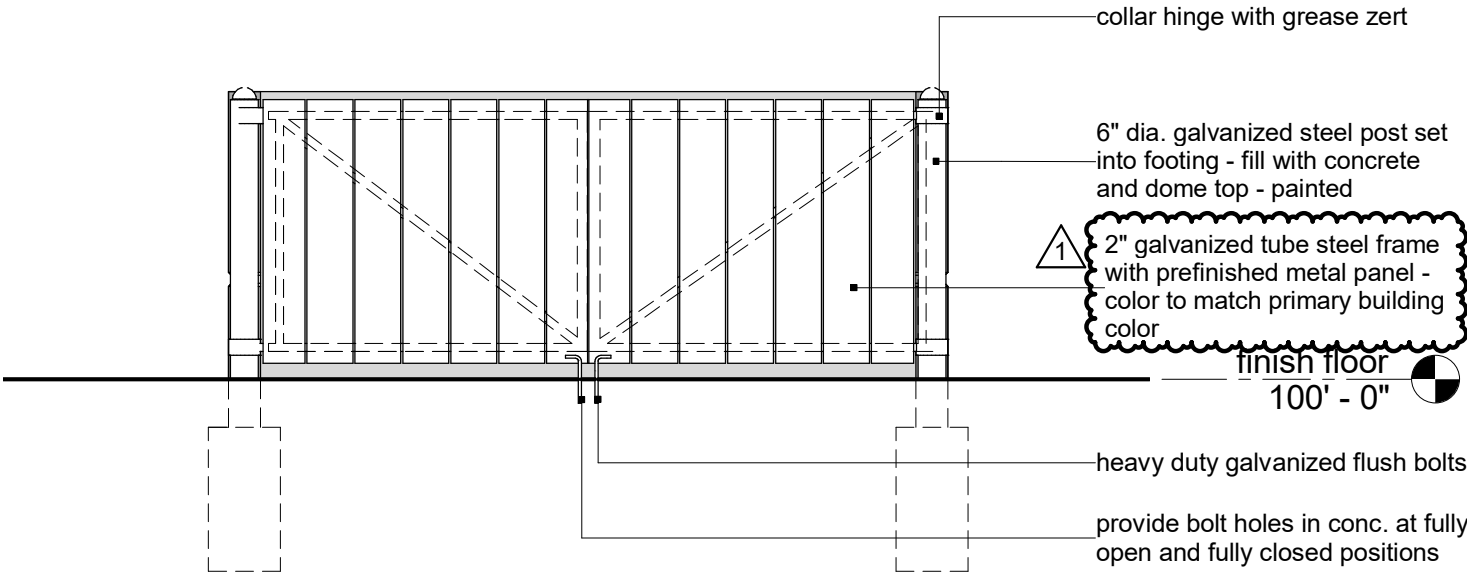


1

trash enclosure plan

scale: 1/4" = 1'-0"

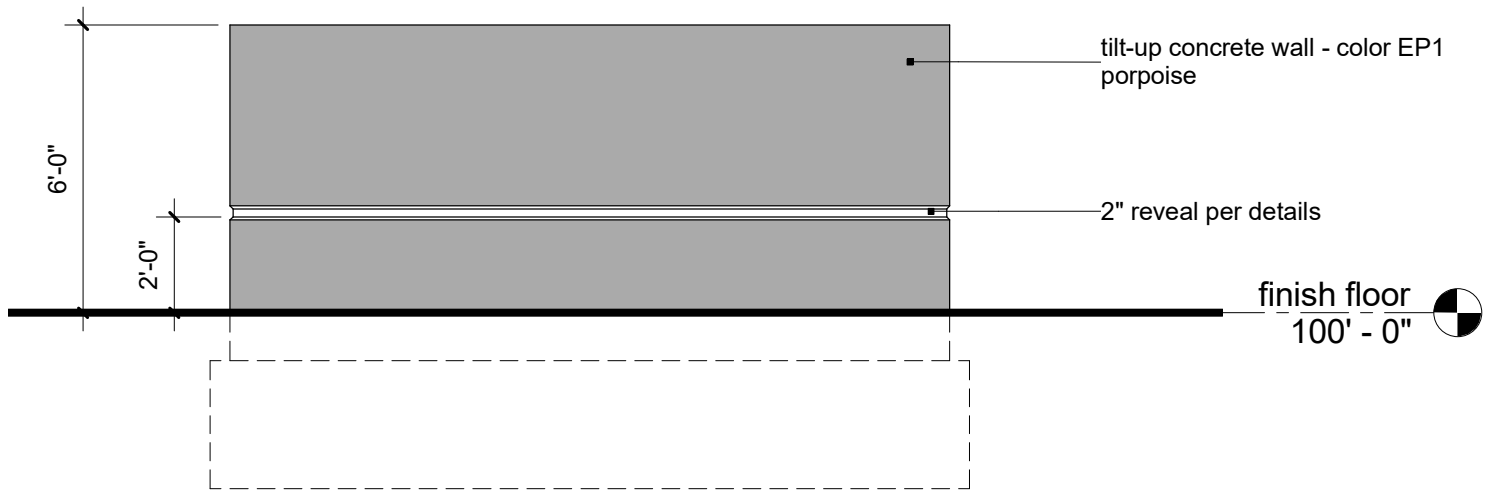
north



2

east elevation - trash enclosure

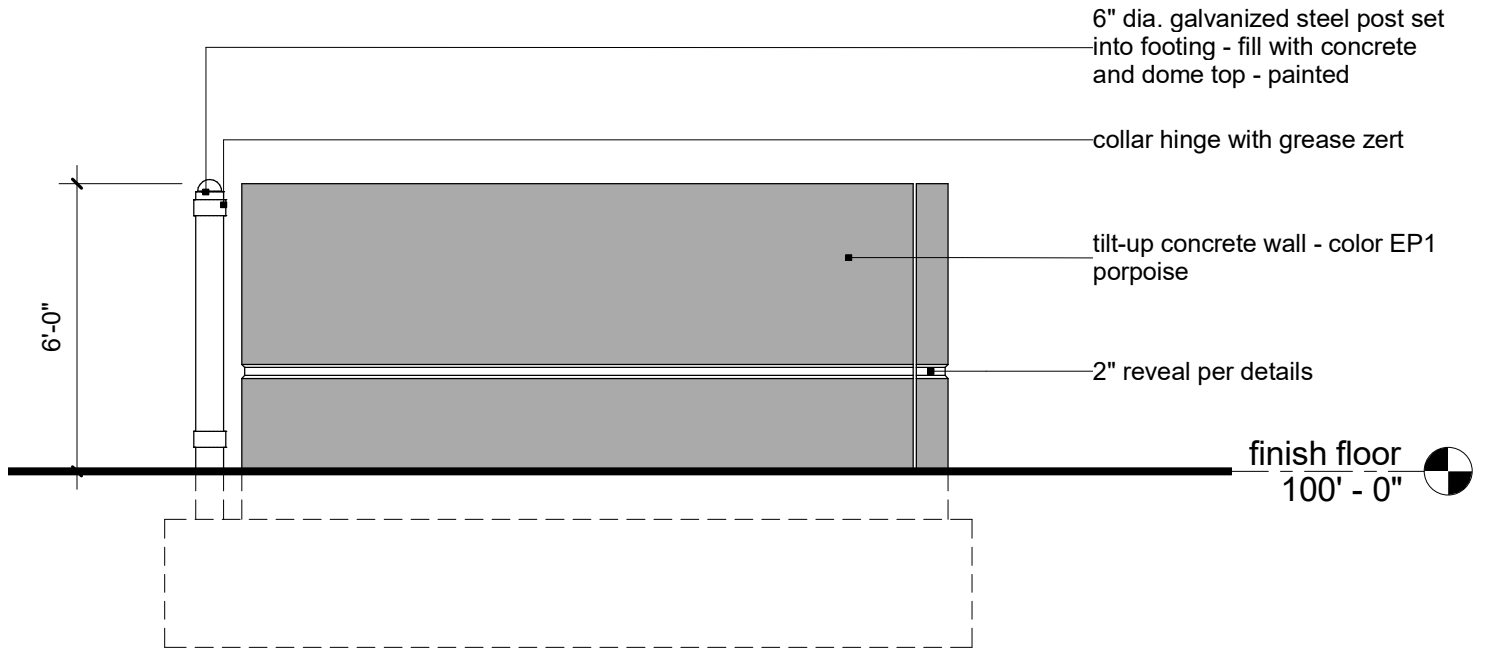
scale: 1/4" = 1'-0"



3

west elevation - trash enclosure

scale: 1/4" = 1'-0"



4

side elevation - trash enclosure

scale: 1/4" = 1'-0"

a new office / warehouse building  
**LBP V - A**  
NE Maguire Blvd. & NE Independence Avenue  
Lee's Summit, Missouri

date  
03.17.2017  
drawn by  
dm  
checked by  
dAE  
revisions  
03.30.2017

1

sheet number  
**A6.2**  
drawing type  
permit  
project number  
17014