

1. CONTRACTOR SHALL ADHERE TO THE "STANDARDS SPECIFICATIONS AND DESIGN CRITERIA" SECTION 2100 AS ADOPTED BY THE CITY OF LEE'S SUMMIT (LATEST EDITION), FOR EXCAVATION AND EMBANKMENT WORK WITHIN THE PROPOSED RIGHT-OF-WAY.

2. AREAS OF CONSTRUCTION SHALL BE STRIPPED OF ALL VEGETATION, ORGANIC MATTER AND TOPSOIL TO A DEPTH AS RECOMMENDED BY GEOTECHNICAL ENGINEER AND OR TESTING AGENCY. SOILS REMOVED DURING SITE STRIPPING SHOULD BE EVALUATED TO DETERMINE IF PORTIONS OF THE TOPSOIL STRATUM MAY BE UTILIZED AS STRUCTURAL FILL WITHIN PAVEMENT AREAS. ANY MATERIAL NOT DEEMED AS SUITABLE FILL MATERIAL BY THE GEOTECHNICAL ENGINEER AND OR TESTING AGENCY SHALL BE REMOVED FROM THE JOB SITE BY THE CONTRACTOR AT HIS EXPENSE.

3. CONTRACTOR SHALL ADHERE TO THE SITE PREPARATION AND STRUCTURAL FILL RECOMMENDATIONS AS CALLED OUT IN THE GEOTECHNICAL REPORT AND ENGINEERING EVALUATION AS PROVIDED BY THE GEOTECHNICAL ENGINEER.

4. ALL EMBANKMENT OUTSIDE OF RIGHT-OF-WAY
SHOULD BE PLACED IN CONTROLLED LIFTS HAVING A
MAXIMUM LOOSE LIFT THICKNESS OF 9".
EMBANKMENT SHOULD BE COMPACTED TO A MINIMUM
OF 95% OF THE MATERIALS MAXIMUM DRY DENSITY
AS DETERMINED BY ASTM D-698 (STANDARD
PROCTOR COMPACTION). MOISTURE CONTENT OF THE
FILL AT THE TIME OF COMPACTION SHALL BE WITHIN
A RANGE OF -1 TO +3 PERCENT OF OPTIMUM
MOISTURE CONTENT.

5. SPECIAL INSPECTIONS SHALL BE PROVIDED FOR AREAS WITH FILLS GREATER THAN 2' FILLS ON SLOPES GREATER THAN 5H:1V, OR AS REQUIRED BY THE CITY OF LEE'S SUMMIT, MISSOURI.

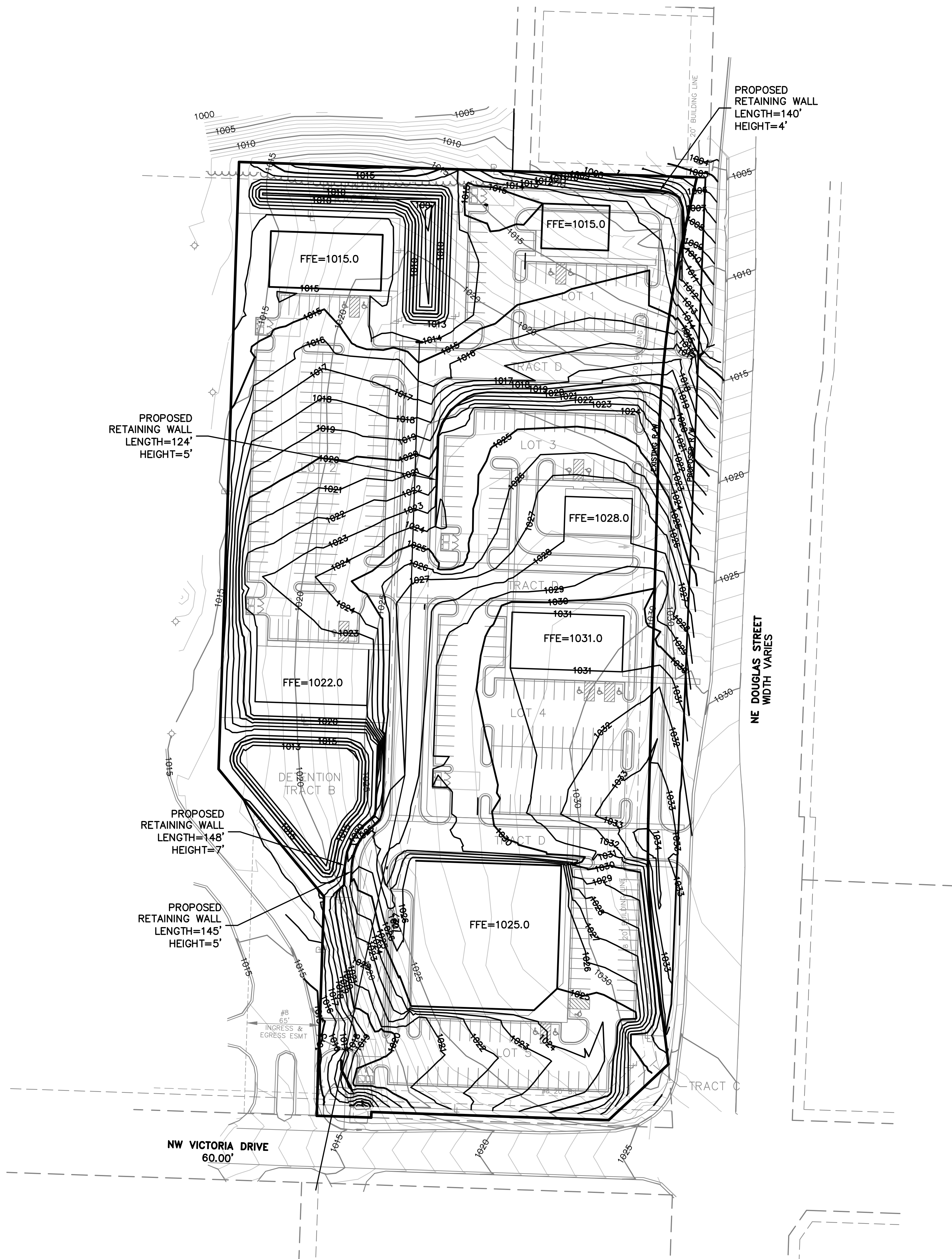
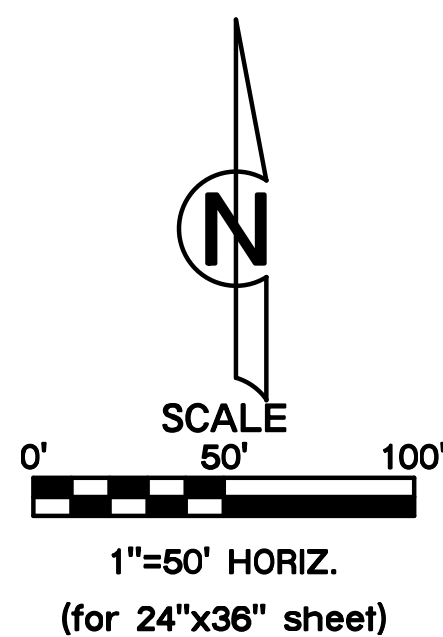
CUT (C.Y.)	FILL (C.Y.)
20,584	9,064



1. EARTHWORK QUANTITIES BASED ON FINISHED GRADE SURFACE AND DO NOT INCLUDE ADJUSTMENTS FOR TOPSOIL AND SHRINKAGE.

2. EARTHWORK QUANTITIES DO NOT TAKE INTO CONSIDERATION EXCAVATION, REMOVAL AND DISPOSAL OF MATERIAL DEEMED UNSUITABLE BY A GEOTECHNICAL ENGINEER. THE EARTHWORK CONTRACTOR IS RESPONSIBLE FOR EXCAVATION, REMOVAL AND DISPOSAL OF UNSUITABLE MATERIAL AND FOR REPLACING IT WITH SUITABLE MATERIAL.

—CFTV—	EXISTING CABLE TV, UNDERGROUND
—CFTV—	PROPOSED CABLE TV, UNDERGROUND
—FCFTV—	FUTURE CABLE TV, UNDERGROUND
—EECH—	EXISTING ELECTRIC, OVERHEAD
—EE—	EXISTING ELECTRIC, UNDERGROUND
—EOH—	PROPOSED ELECTRIC, OVERHEAD
—E—	PROPOSED ELECTRIC, UNDERGROUND
—FECH—	FUTURE ELECTRIC, OVERHEAD
—FE—	FUTURE ELECTRIC, UNDERGROUND
—FFO—	EXISTING FIBER OPTIC, UNDERGROUND
—FO—	PROPOSED FIBER OPTIC, UNDERGROUND
—FFG—	FUTURE FIBER OPTIC, UNDERGROUND
—EG—	EXISTING GAS LINE
—G—	PROPOSED GAS LINE
—FG—	FUTURE GAS LINE
—CESAN—	EXISTING SANITARY SEWER
—PSAN—	PROPOSED SANITARY SEWER, PRIVATE
—OSAN—	PROPOSED SANITARY SEWER, PUBLIC
—PSM—	FUTURE SANITARY SEWER
—ESTM—	EXISTING STORM SEWER
—PSM—	PROPOSED STORM SEWER, PRIVATE
—STM—	PROPOSED STORM SEWER, PUBLIC
—ESTM—	FUTURE STORM SEWER
—ETEL—	EXISTING TELEPHONE, UNDERGROUND
—TEL—	PROPOSED TELEPHONE, UNDERGROUND
—FTEL—	FUTURE TELEPHONE, UNDERGROUND
—EW—	EXISTING WATER LINE
—PW—	PROPOSED WATER LINE, PRIVATE
—W—	PROPOSED WATER LINE, PUBLIC
—FW—	FUTURE WATER LINE

—100— EXISTING INDEX CONTOURS
 —100— EXISTING INTERMEDIATE CONTOURS
 —100— PROPOSED INDEX CONTOURS
 —100— PROPOSED INTERMEDIATE CONTOURS
 - - -100- - - FUTURE INDEX CONTOURS
 - - -100- - - FUTURE INTERMEDIATE CONTOURS



Sheet No.:	GRADING PLAN	<div><p>1301 Burlingame, # 100 North Kansas City, MO 64116 TEL: 816.867.4320 FAX: 816.867.1703 www.polyolssonassociates.com</p></div> <div><p>LUTJEN</p></div>	<div>Reviewed By: P.J.O.</div> <div>Designed By: A.K.H.</div> <div>Drafted By: C.J.H.</div> <div>Lutjen Project No.: 016-3718</div>	<div>DATE:</div> <div>12-22-2018</div> <div>01-24-2017</div> <div></div> <div></div> <div></div> <div></div> <div></div>	<div>NO.:</div> <div></div> <div></div> <div></div> <div></div> <div></div> <div></div>	<div>REVISIONS/APPROVALS:</div> <div>Submitted to City</div> <div>Revised per Staff comments</div> <div></div> <div></div> <div></div> <div></div> <div></div>
C004	POLYTAINERS ADDITION					
	LEE'S SUMMIT, JACKSON COUNTY,					
	MISSOURI					