

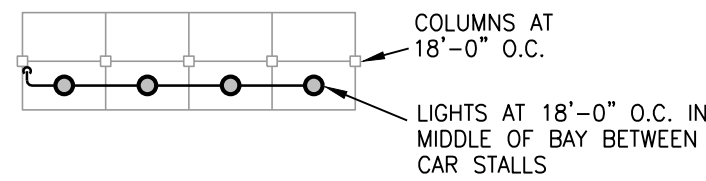


- NOTES:**
1. VERIFY UTILITIES WITH CIVIL DRAWING AND PROVIDERS.
  2. SEE 1-ME1.02 FOR GARAGE DETAIL.
  3. ELECTRICAL SERVICE PRIMARY AND TRANSFORMER LOCATIONS ARE PROPOSED. OBTAIN KCPL DESIGN PRIOR TO CONSTRUCTION OR ORDERING EQUIPMENT.
  4. FOR GAS SERVICES TO AMENITIES, PROVIDE STEEL RISER, SHUT-OFF AND KEY OPERATED VALVE. VERIFY WITH LANDSCAPE ARCHITECT.
  5. CARPORTS ROUTE TO GARAGE PANELS.
  6. ALL SITE LIGHTING IS (3) #10 IN 3/4" PVC CONDUIT AND ROUTES THRU PHOTOCELL.
  7. ☒ = PROPOSED TRANSFORMER LOCATION.

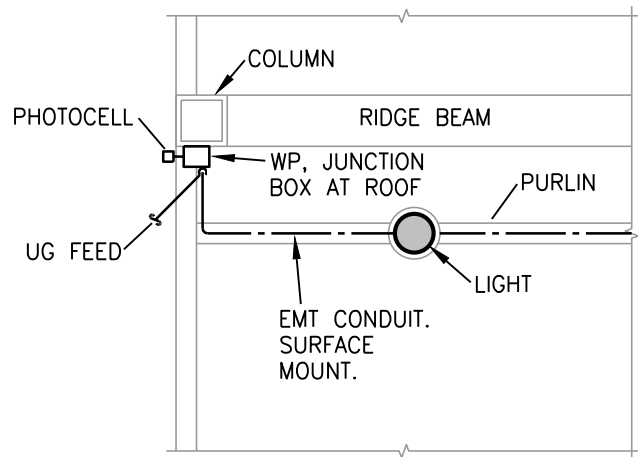
- LEGEND:**
- ① (4) 4"C., (1) FOR FIBER, (1) FOR TIME WARNER, (1) FOR AT&T, AND (1) FOR GOOGLE. CONTINUE ALL CONDUITS TO AT&T AND TIME WARNER MAIN DEMARK LOCATIONS.
  - ② PROVIDE QUAZITE HANDHOLE. CONTRACTOR SHALL COORDINATE WITH UTILITY COMPANY FOR ANY OTHER REQUIREMENTS.
  - ③ IN-USE WP OUTLET BOX WITH TYPE "U" RECEPTACLE TO 6" ABOVE SLAB TO TOP OF BOX.
  - ④ WATER/FIRE ENTRANCE, SEE CIVIL
  - ⑤ SANITARY EXIT, SEE CIVIL.
  - ⑥ GARAGE PANEL, SEE ME1.02.
  - ⑦ JUNCTION BOX AT GARAGE, ROUTE CIRCUITS TO ADJACENT GARAGE PANEL.

MARK	MANUFACTURE	MODEL NUMBER	RECESS	MOUNTING			FINISH	LAMPS		FITTURE QUANTITY	REMARKS
				SURFACE	WALL			CODE	QUANTITY		
SL 1	PRESCOLITE	1152-962			X		BRONZE	26 W CFL	1	158	
SL 2	HUBBELL	LMC-30LU-4K-4			X		BRONZE	71 W LED	1	9	6
SL 3	HUBBELL	BRI-01		X			BRONZE	26 W CFL	1	28	7
SL 4	CREE	ARE-EDR-2MB-DA-12-E-UL-BZ-525-40K		POLE			BRONZE	197 W LED	1	9	2,3,4
SL 5	CREE	ARE-EDR-2MB-DA-12-E-UL-BZ-525-40K		POLE			BRONZE	197 W LED	2	1	1,3,4
SL 6	CREE	ARE-EDR-3MB-DA-12-E-UL-BZ-525-40K		POLE			BRONZE	197 W LED	1	8	2,3,4
SL 7	CREE	ARE-EDR-3MB-DA-12-E-UL-BZ-525-40K		POLE			BRONZE	197 W LED	2	2	1,3,4
SL 8	CREE	ARE-EDR-5M-DA-12-E-UL-BZ-525-40K		POLE			BRONZE	197 W LED	1	11	2,3,4
SL 9	CREE	PWY-EDG-5M-P3-02-E-UL-BZ-350-40K		BOLLARD			BRONZE	21 W LED	1	19	
SL 10	CONTECH	TLTO12V2RGB16CR		GROUND			BRONZE	1.8W/FT RGB LED	1	3	
SL 11	CREE	ARE-EDR-2/3MB-DA-12-E-UL-BZ-525-40K		POLE			BRONZE	197 W LED	2	1	1, 3, 4

- REMARKS:**
- 1 PROVIDE WITH (2) HEADS AT 180° FROM EACH OTHER.
  - 2 PROVIDE WITH (1) HEAD.
  - 3 MOUNT ON 20' POLE ROUND STRAIGHT STEEL, 80 MPH RATED, 4 FOOT SCREW-IN BASE.
  - 4 VERIFY EPA RATING OF POLE WITH MANUFACTURER.
  - 5 MOUNT IN SOFFIT OF ROOF OVERHANG BETWEEN GARAGE DOORS.
  - 6 MOUNT AT 12' AFG
  - 7 MOUNT UNDER CARPORT CANOPY

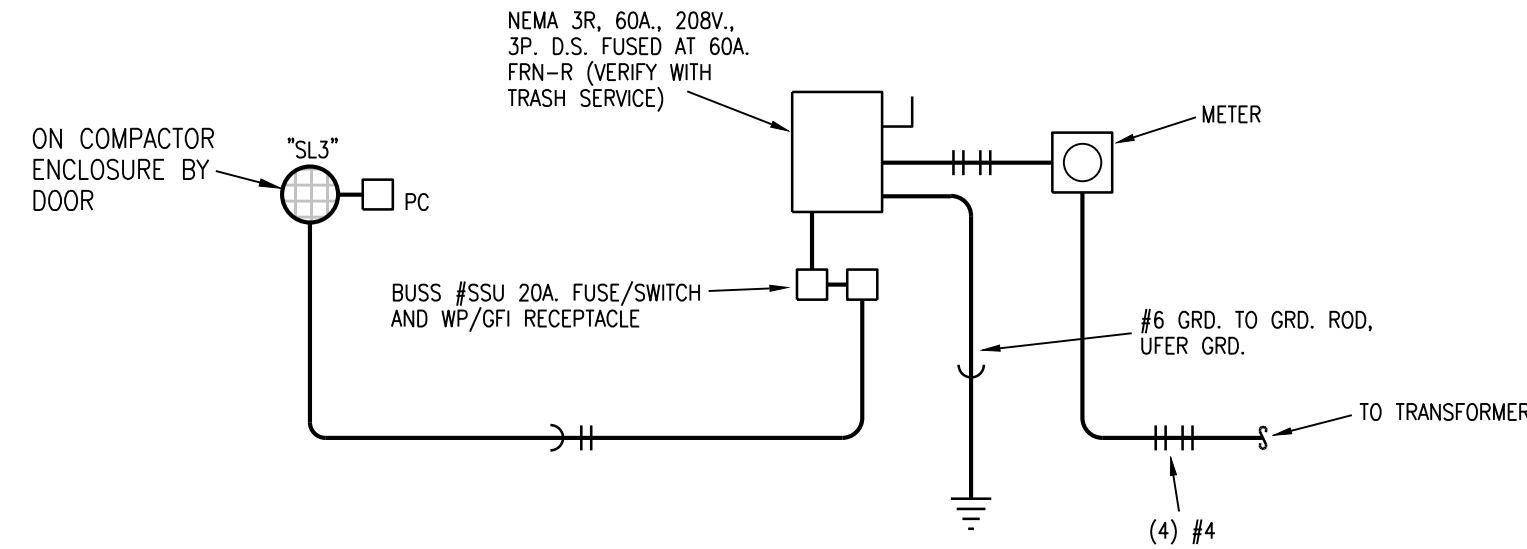


## CARPORT PLAN

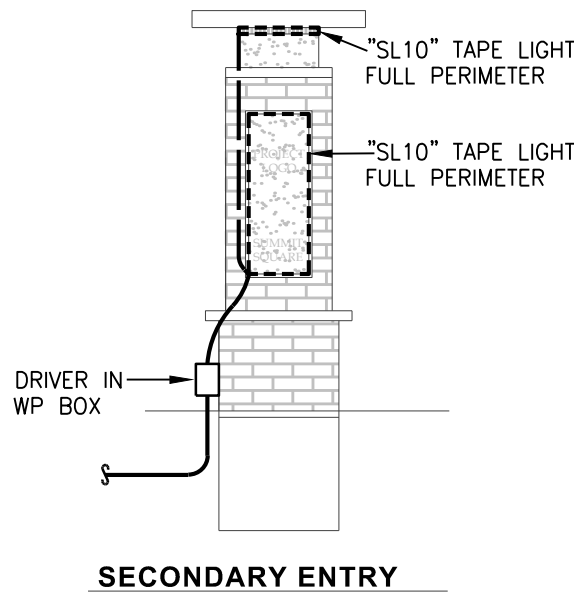


## PARTIAL PLAN DETAIL

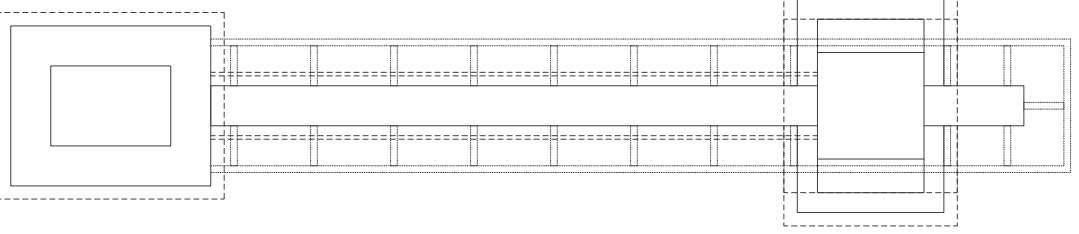
## 2 COMPACTOR ELECTRICAL SERVICE DETAIL NO SCALE



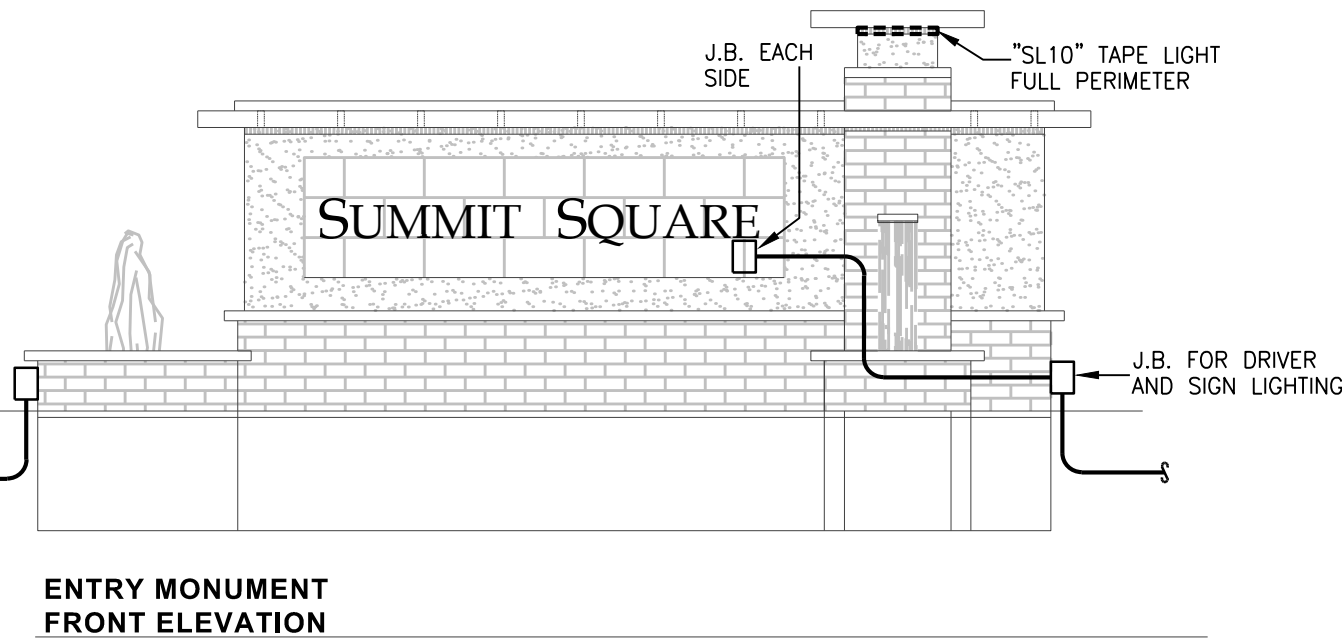
## 3 CARPORT LIGHTING DETAIL NO SCALE



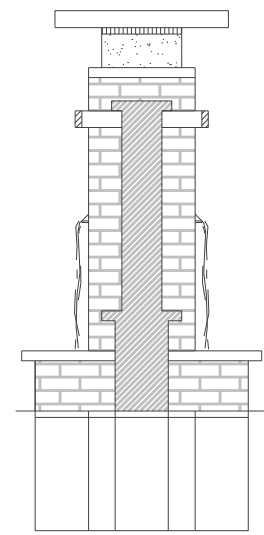
## SECONDARY ENTRY



## PLAN



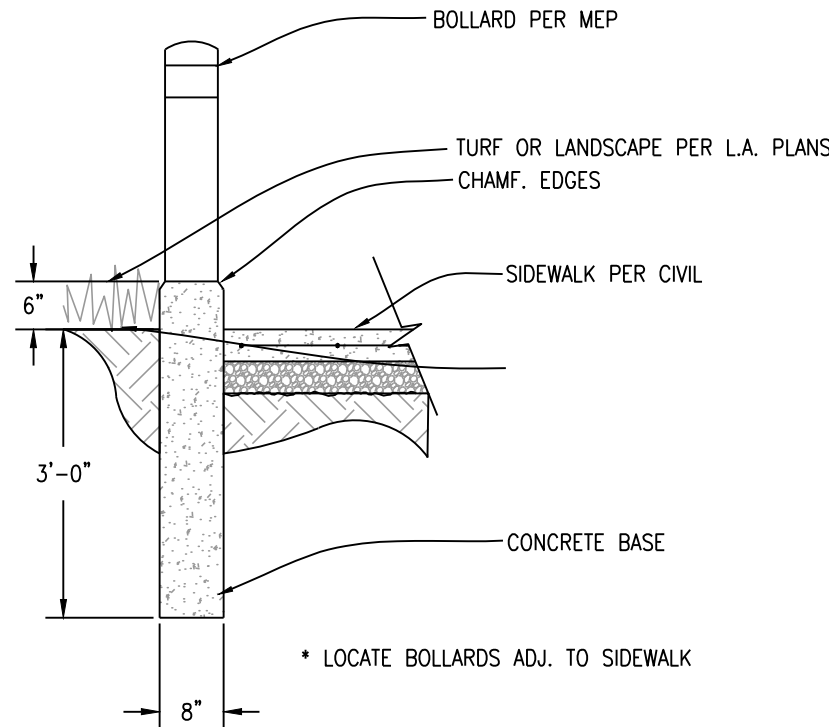
## ENTRY MONUMENT FRONT ELEVATION



## SECTION

## 4 MONUMENT DETAIL NO SCALE

## 5 TYPICAL BOLLARD DETAIL 1/2"=1'-0"



## 1 SITE PLAN 1"=60'-0"

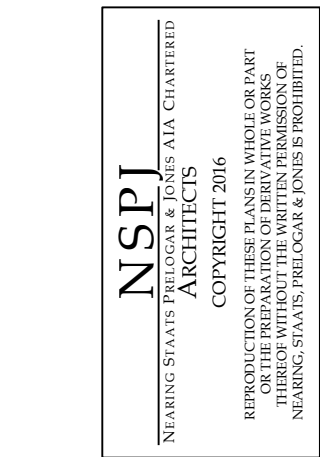
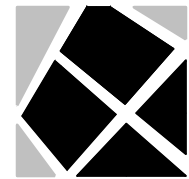


ARCHITECTURE  
LANDSCAPE  
ARCHITECTURE  
INTERIORS  
ENERGY SERVICES

**NSPJ**

ARCHITECTS PA  
3515 W. 75TH ST., SUITE 201  
PRAIRIE VILLAGE, KS 66208

P. 913.831.1415  
F. 913.831.1563  
NSPARCH.COM  
© COPYRIGHT 2015



A NEW APARTMENT COMMUNITY AT:

**SUMMIT SQUARE**

LEE'S SUMMIT, MISSOURI

## DRAWING RELEASE LOG

- 03.04.2016 - PDP SUBMITTAL
- 06.09.2016 - FDP SUBMITTAL
- 07.01.2016 - 80% PROGRESS SET
- 07.15.2016 - PERMIT SUBMITTAL
- 08.05.2016 - BID SET
- 09.15.2016 - PERMIT RESUBMITTAL

REVISIONS  
▲ ● 09.15.2016 - PERMIT  
RESUBMITTAL



DATE  
06/09/2016  
JOB NO.  
575215  
DRAWN BY:  
CAD  
SHEET NO.

**ME1.01**