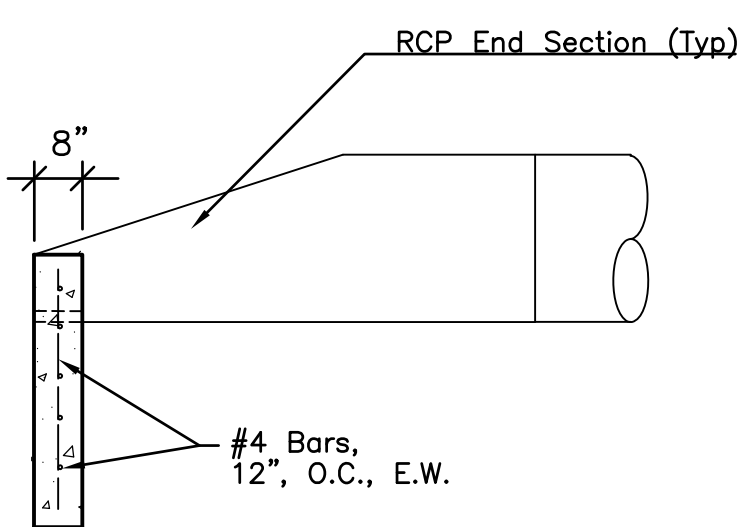
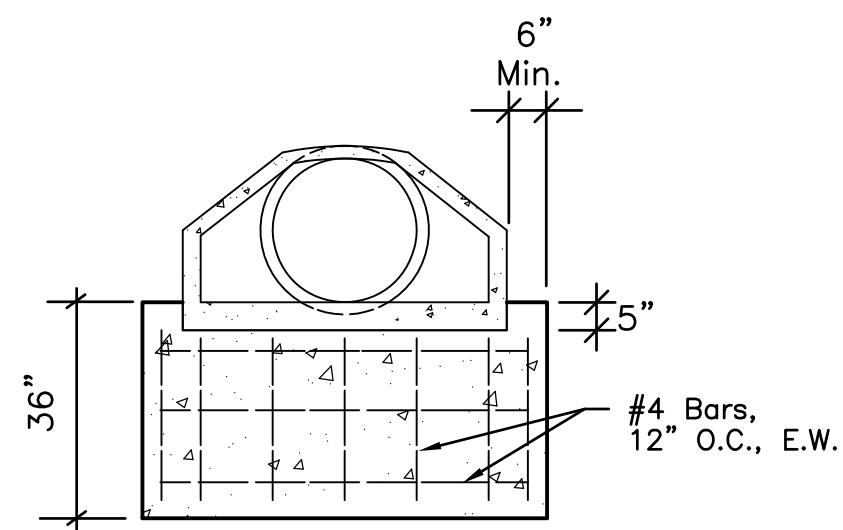
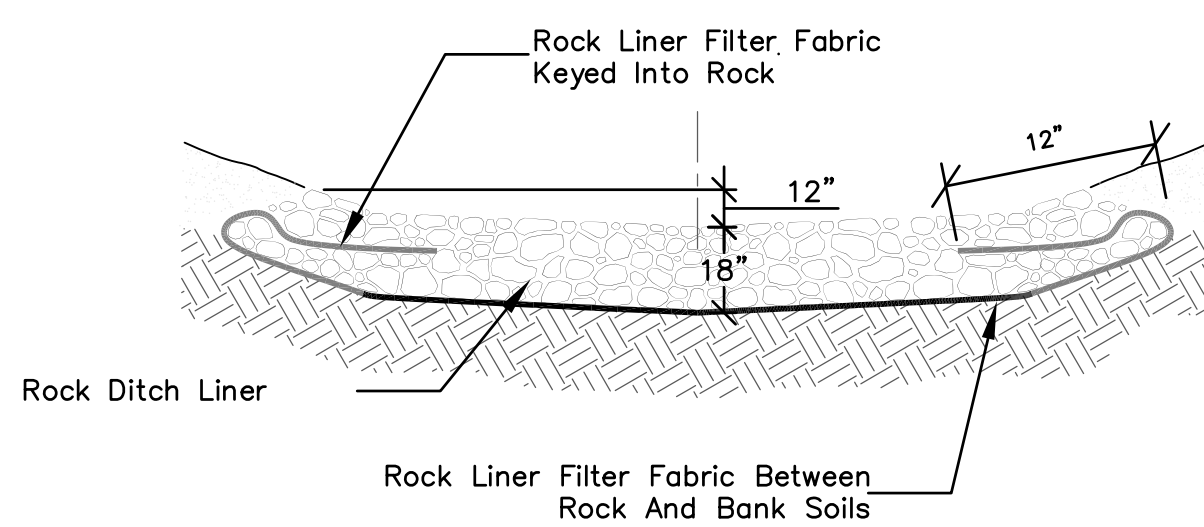


- Notes:
1. All Fire Lane marking shall be the color red.
 2. Fire Lane marking shall consist of painting the curb from Flowline to top back of curb and stencil lettering and striping as shown.
 3. Stencil Lettering shall be applied every 50 feet.

1 FIRE LANE MARKING
C511 N.T.S.

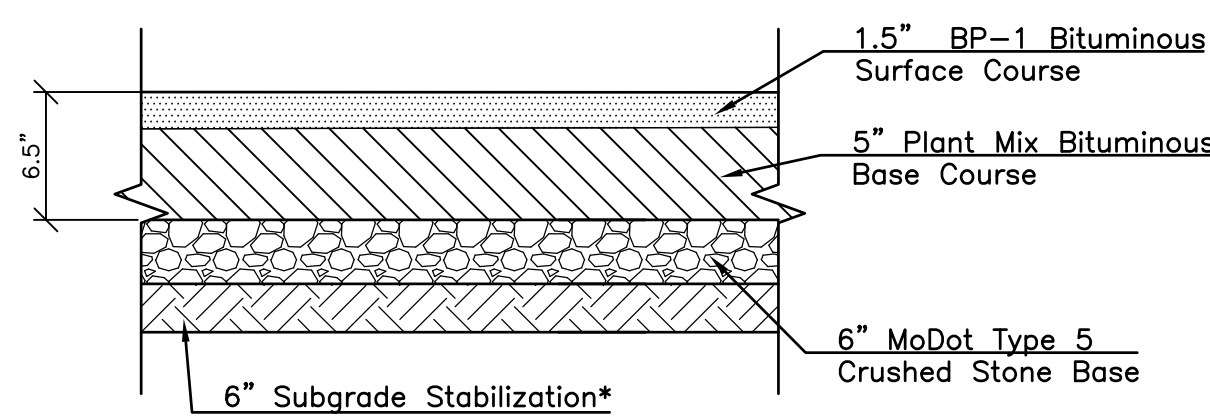


2 PIPE TOEWALL
C511 N.T.S.



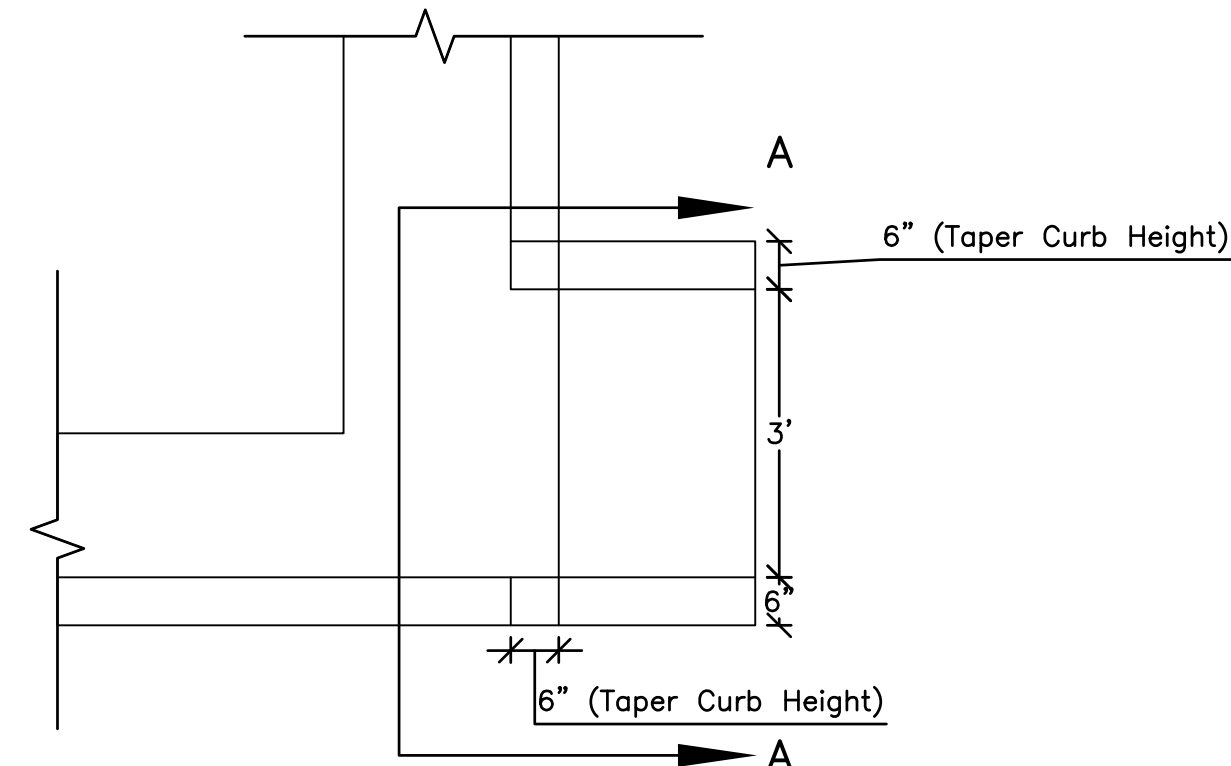
NOTE:
1. Rock Liner Filter Fabric Shall Consist of a Non-woven, Polypropylene Type Fabric AMOCO 4553 Non-woven Geotextile Fabric or Approved Equal.

3 ROCK DITCH LINER
C511 N.T.S.

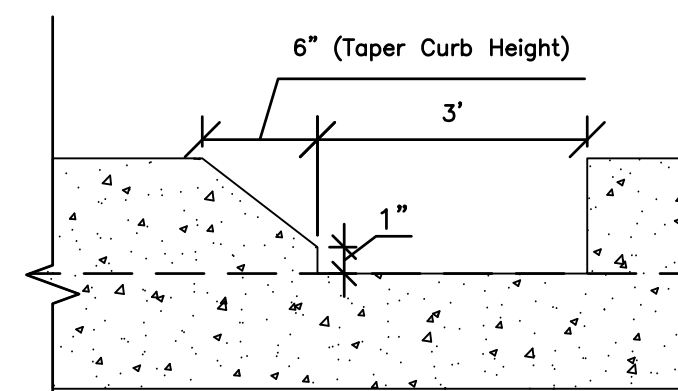


* Geogrid may be substituted for subgrade stabilization

4 HEAVY DUTY ASPHALT PAVEMENT
C511 N.T.S.

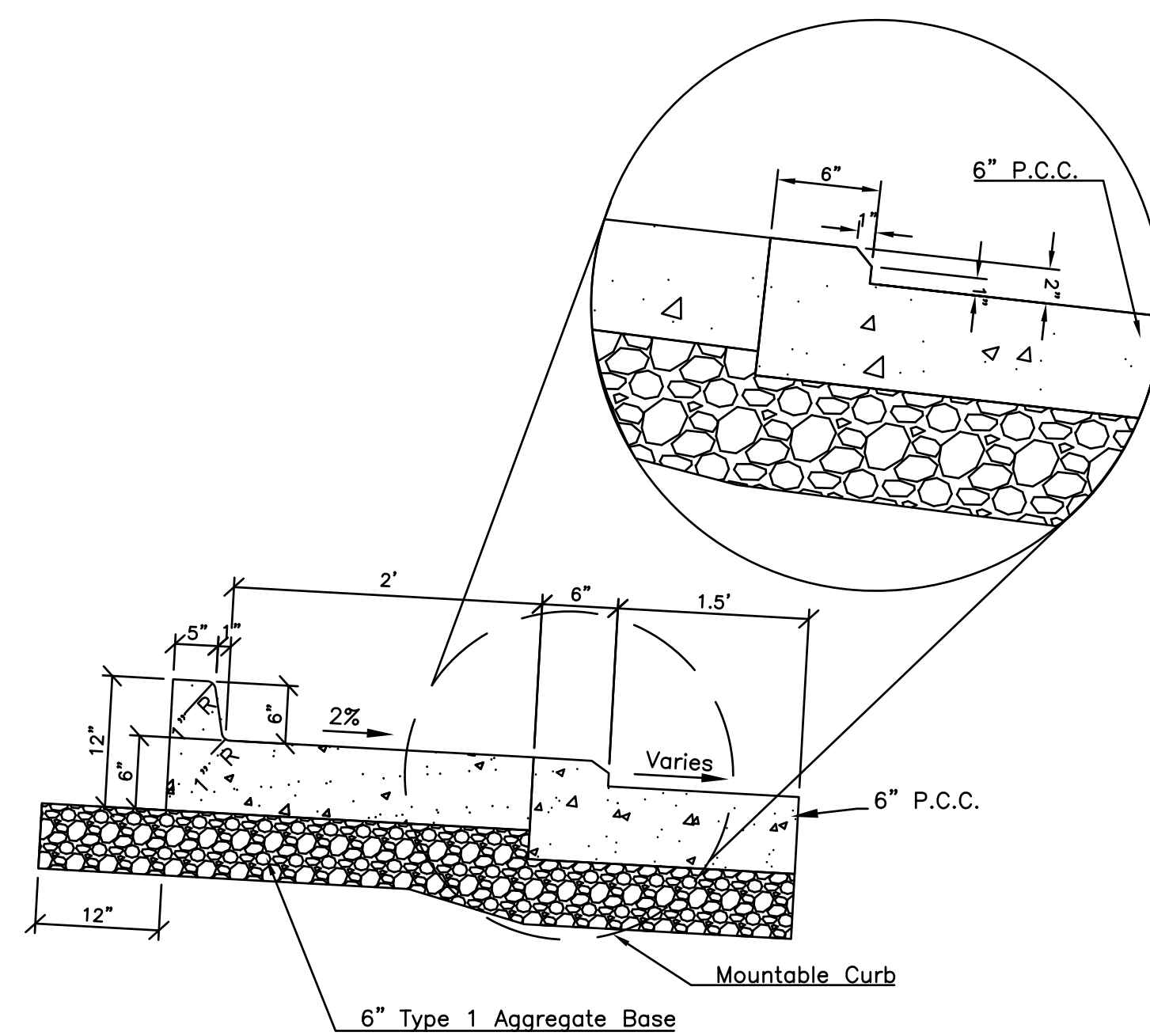


PLAN VIEW

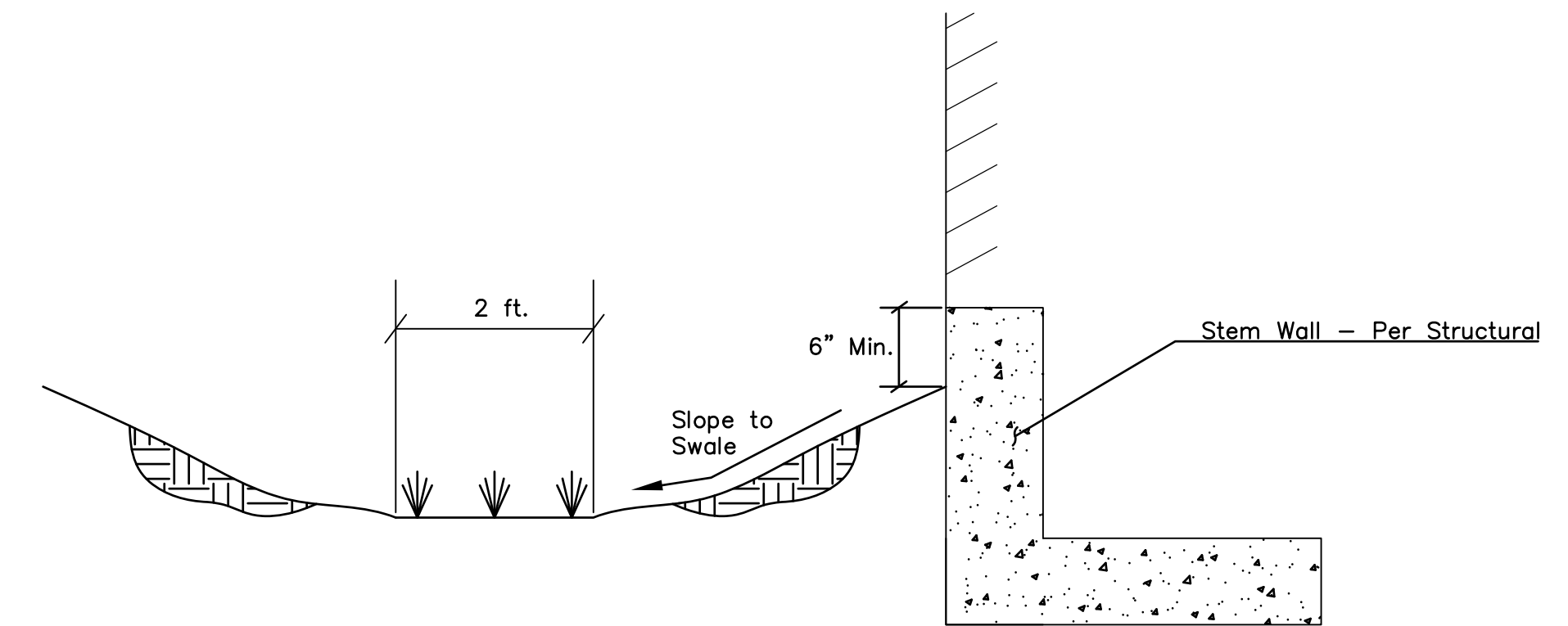


SECTION A-A

5 CURB CUT
C511 N.T.S.

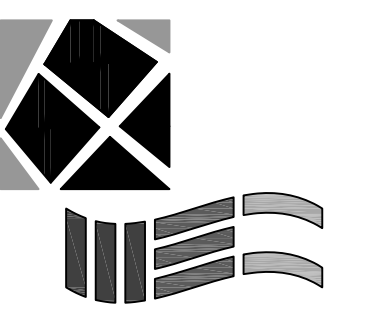


6 ROUNDABOUT MOUNTABLE CURB
C511 N.T.S.



7 DRAINAGE SWALE AT BACK OF STRUCTURE
C511 N.T.S.

ARCHITECTURE
LANDSCAPE
ARCHITECTURE
INTERIORS
ENERGY SERVICES
P. 913.831.1415
F. 913.831.1563
NSPJARCH.COM
© COPYRIGHT 2015



McCLURE ENGINEERING CO.
building strong communities.
1901 Pennsylvania Drive
Columbia, MO 65202
P 573-814-1568
F 573-814-1128



09/15/2016
Keenan Simon
MO-2016017682
Expires: 12-31-2016

A NEW APARTMENT COMMUNITY AT:
SUMMIT SQUARE
701 NW WARD RD.
LEE'S SUMMIT, MISSOURI

DRAWING RELEASE LOG

- 03.04.2016 - PDP SUBMITTAL
- 06.09.2016 - FDP SUBMITTAL
- 07.01.2016 - 80% PROGRESS SET
- 07.15.2016 - PERMIT SUBMITTAL
- 08.05.2016 - BID SET
- 08.15.2016 - BID SET

REVISIONS
City Comments 07/26/2016

DATE
09/15/2016
JOB No.
80816033
DRAWN BY:
GRK
SHEET No.

DETAILS
C511