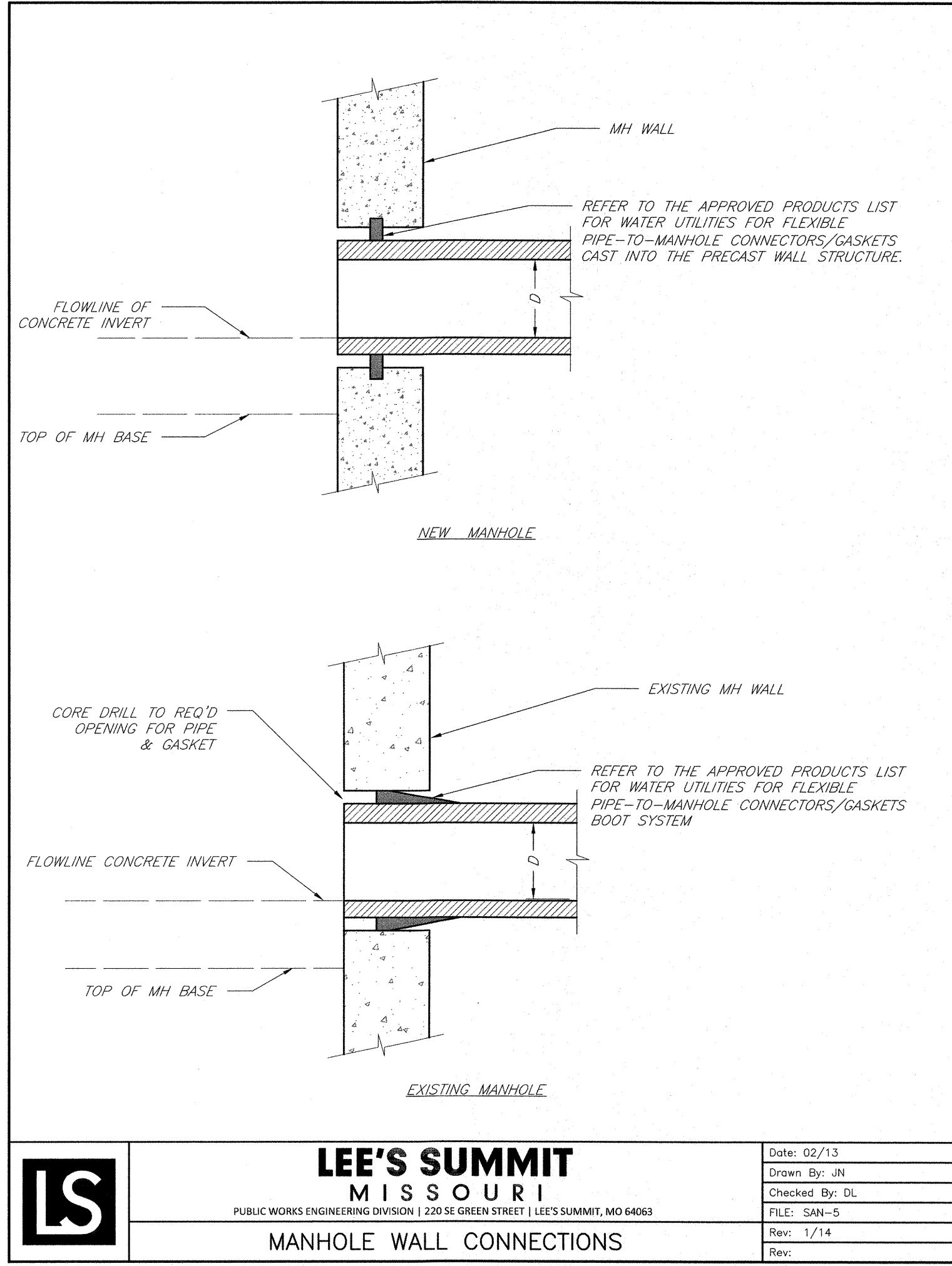
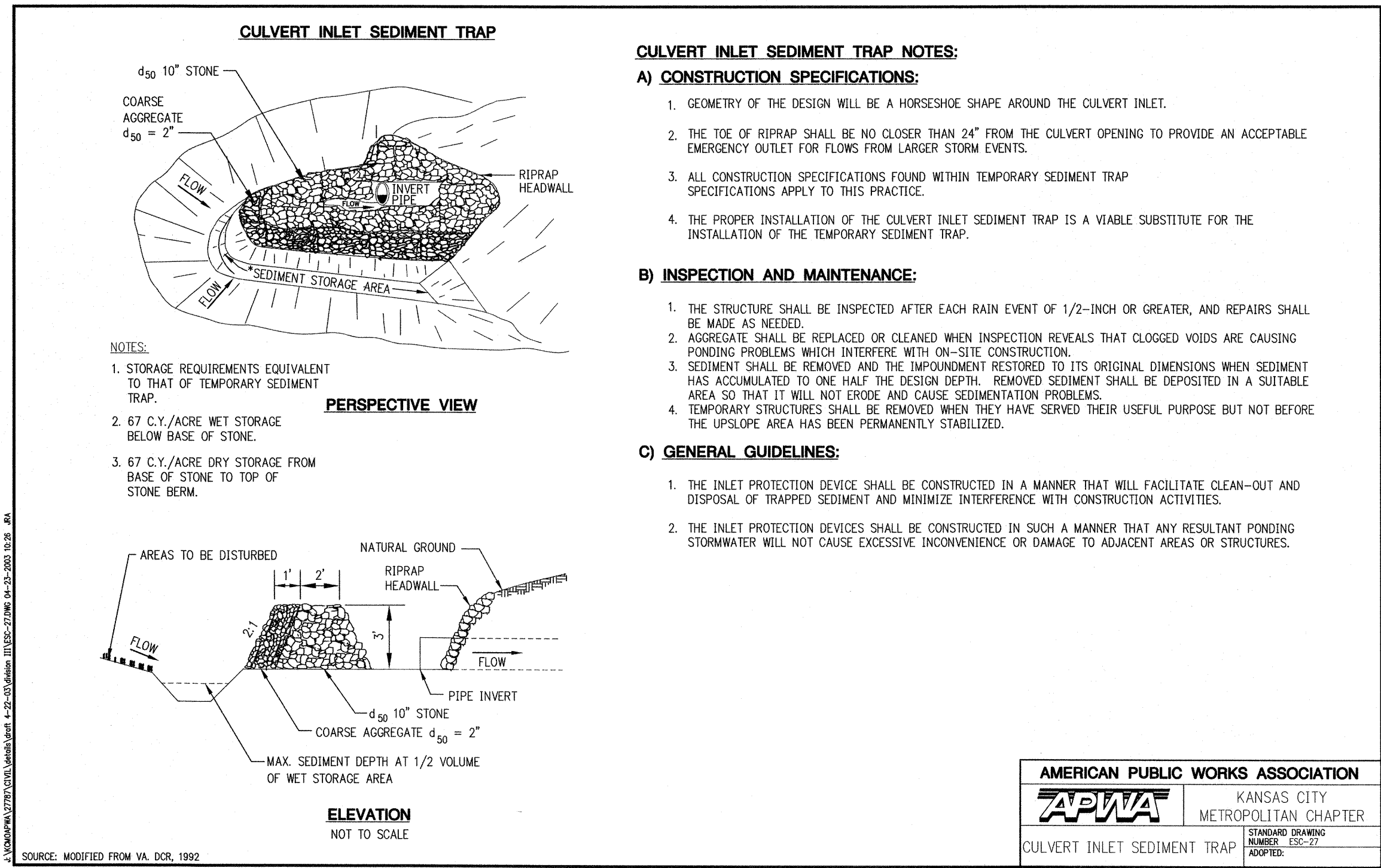


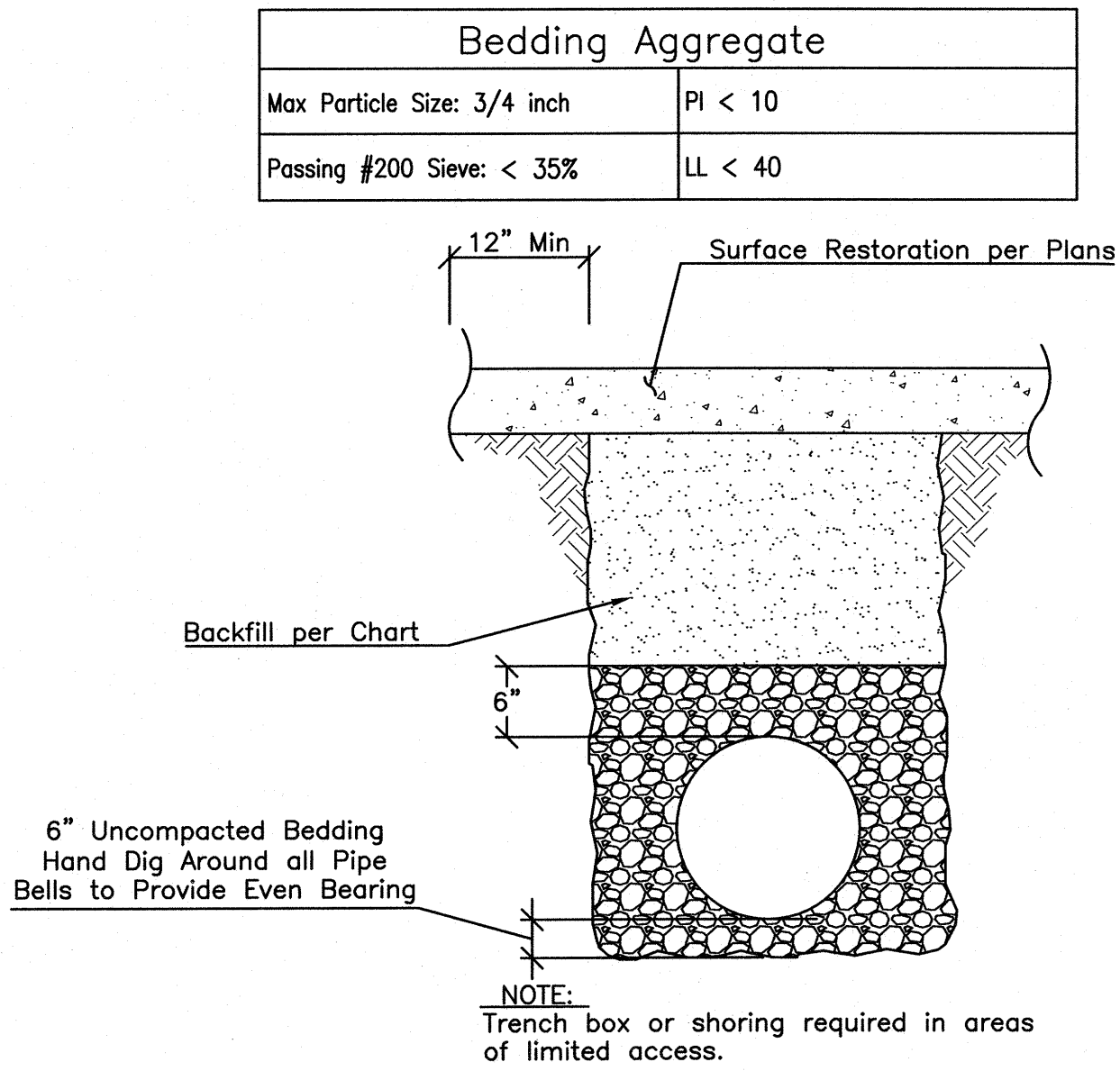
1 STANDARD PRECAST MANHOLE
C507 N.T.S.



3 MANHOLE WALL CONNECTIONS
C507 N.T.S.

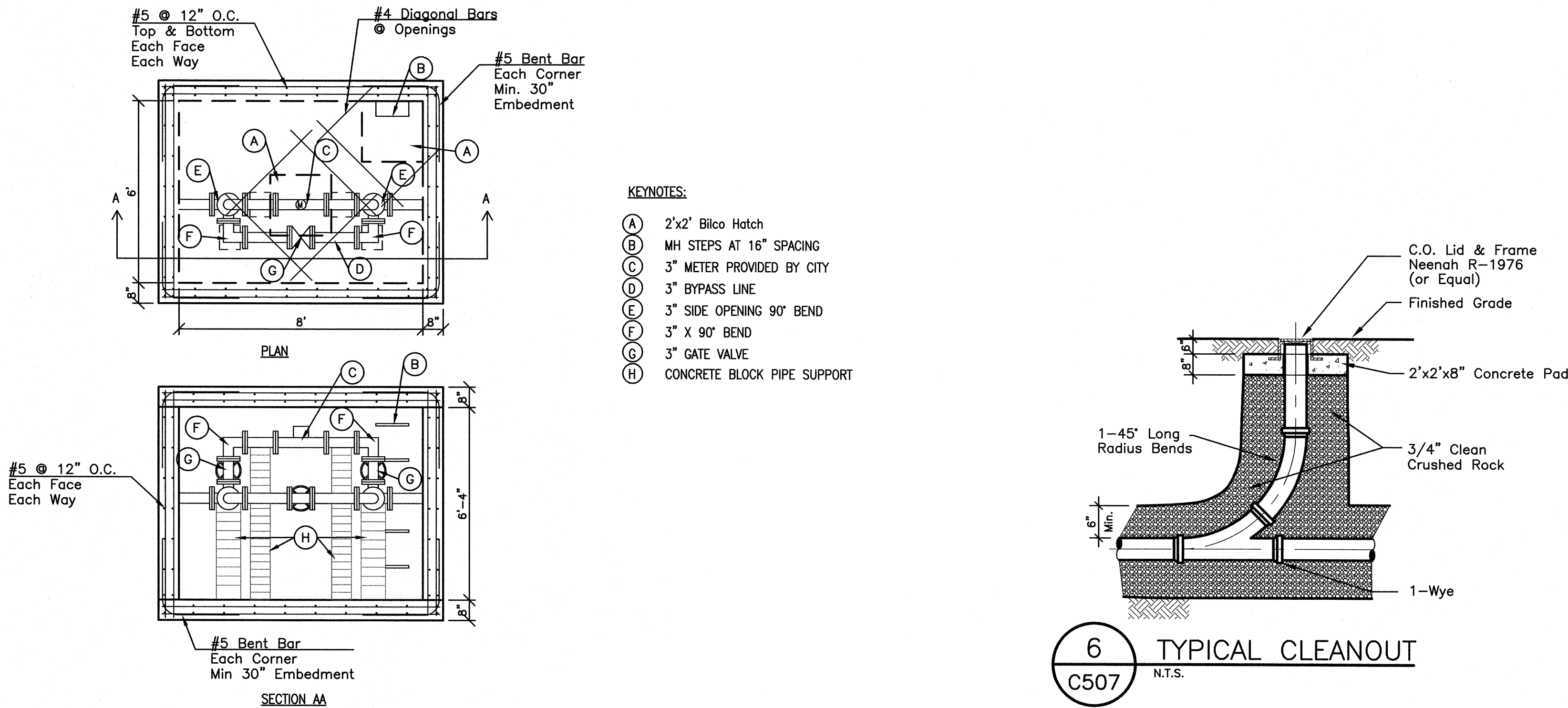


4 CULVERT INLET SEDIMENT TRAP
C507 N.T.S.



2 METHOD OF BEDDING PIPE
C507 N.T.S.

BACKFILL		
Trench Location	Requirement	Compaction
Paved areas within street or alley right of way	Trenches 24" or less in width: Type A flowable fill Trenches 24"-48" wide: Type A flowable fill or dense, well-graded aggregate base material. Aggregate base material shall meet the requirements for MoDOT Types 1 or 5, or APWA 2202.2 Trenches greater than 48" wide: Suitable material as specified for earth embankment in APWA Standard Specifications, Section 2102.2.C	95% Standard Proctor
Lawn	Suitable material as specified for earth embankment in APWA Standard Specifications, Section 2102.2.C Suitable backfill material may also be other trench backfill material (flowable fill or aggregate base) depending on site conditions, trench widths, or at the direction of the City's on-site inspector.	90% Standard Proctor



6 TYPICAL CLEANOUT
C507 N.T.S.

5 3" METER VAULT
C507 N.T.S.