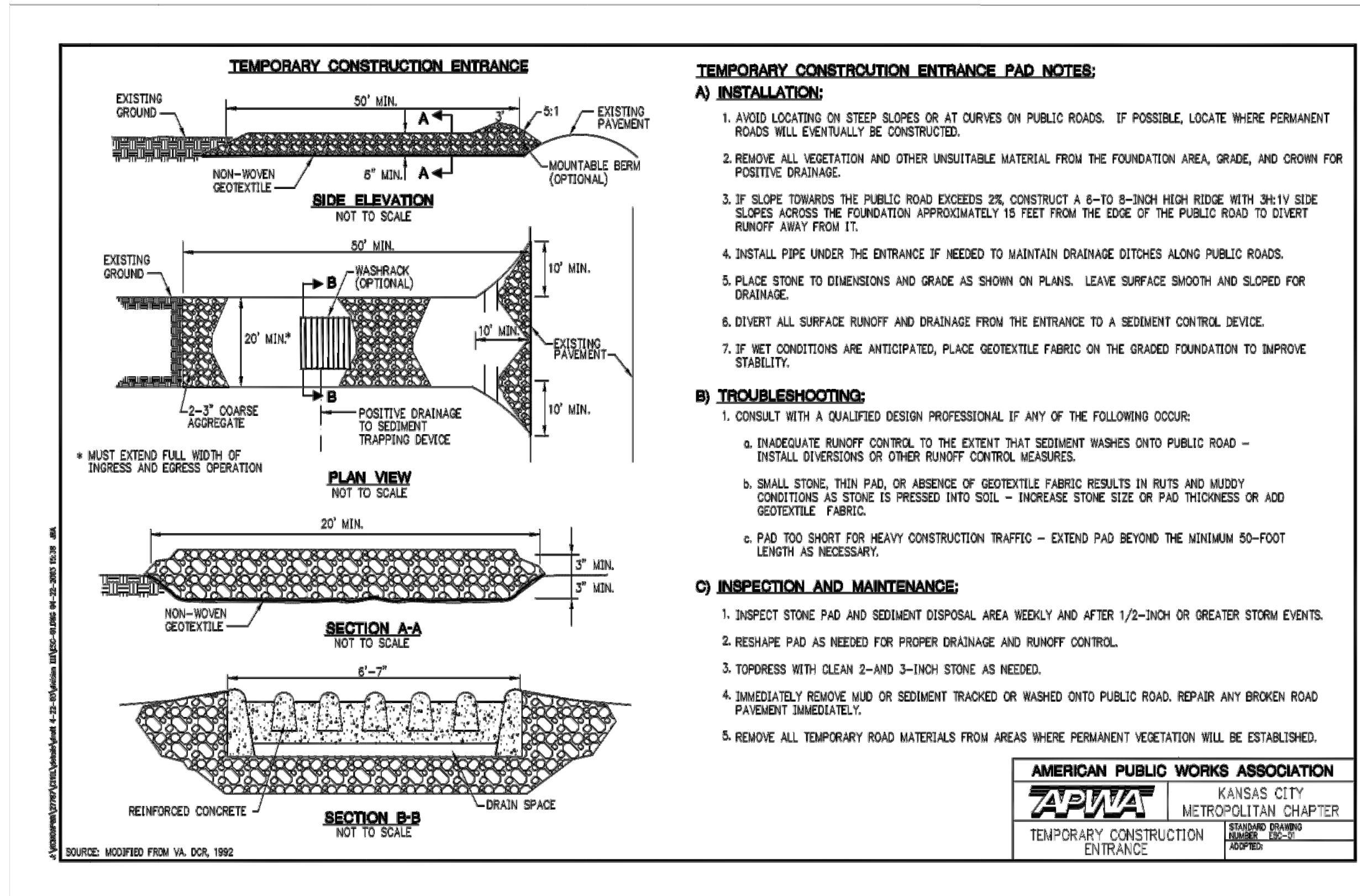
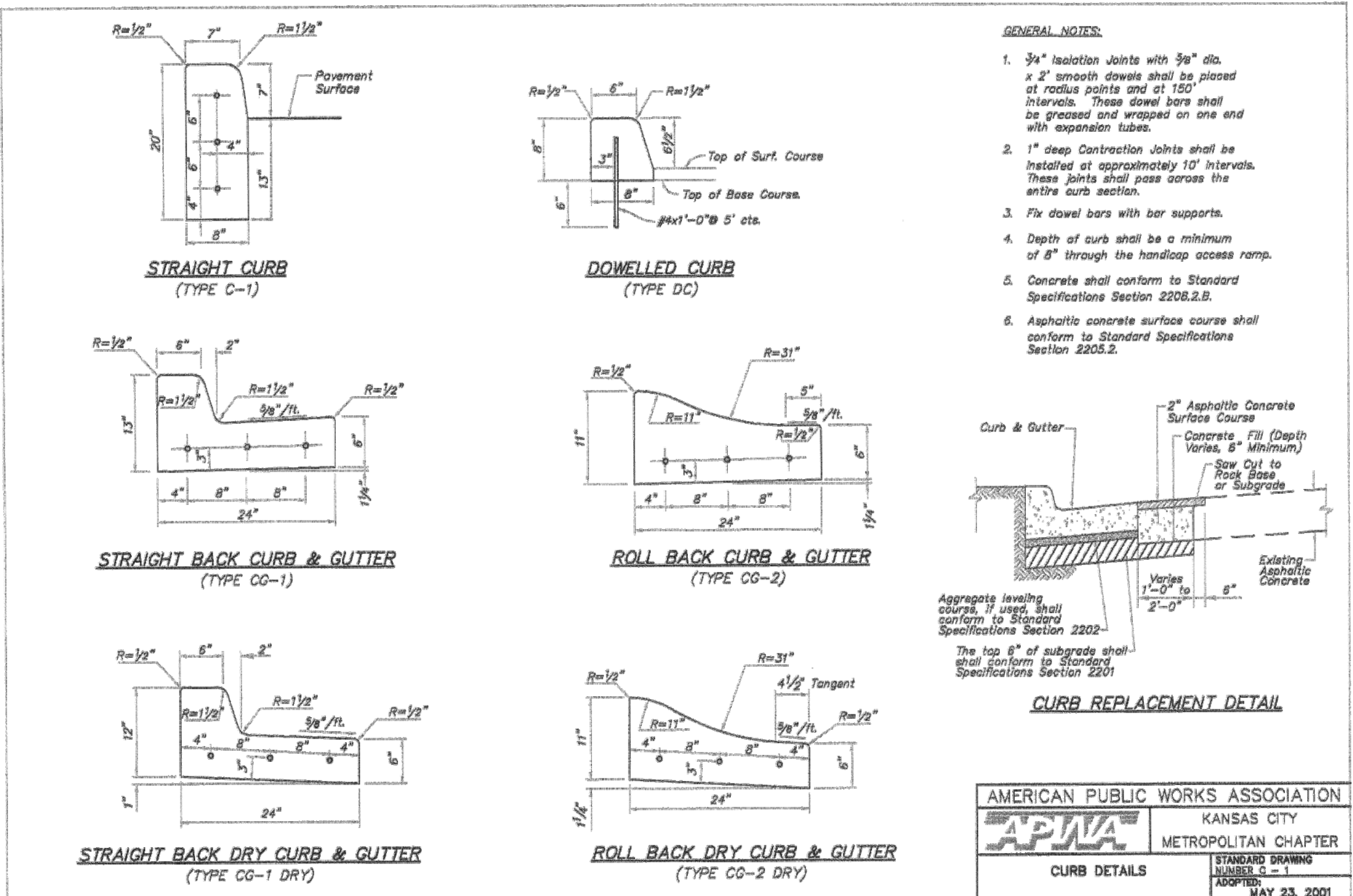


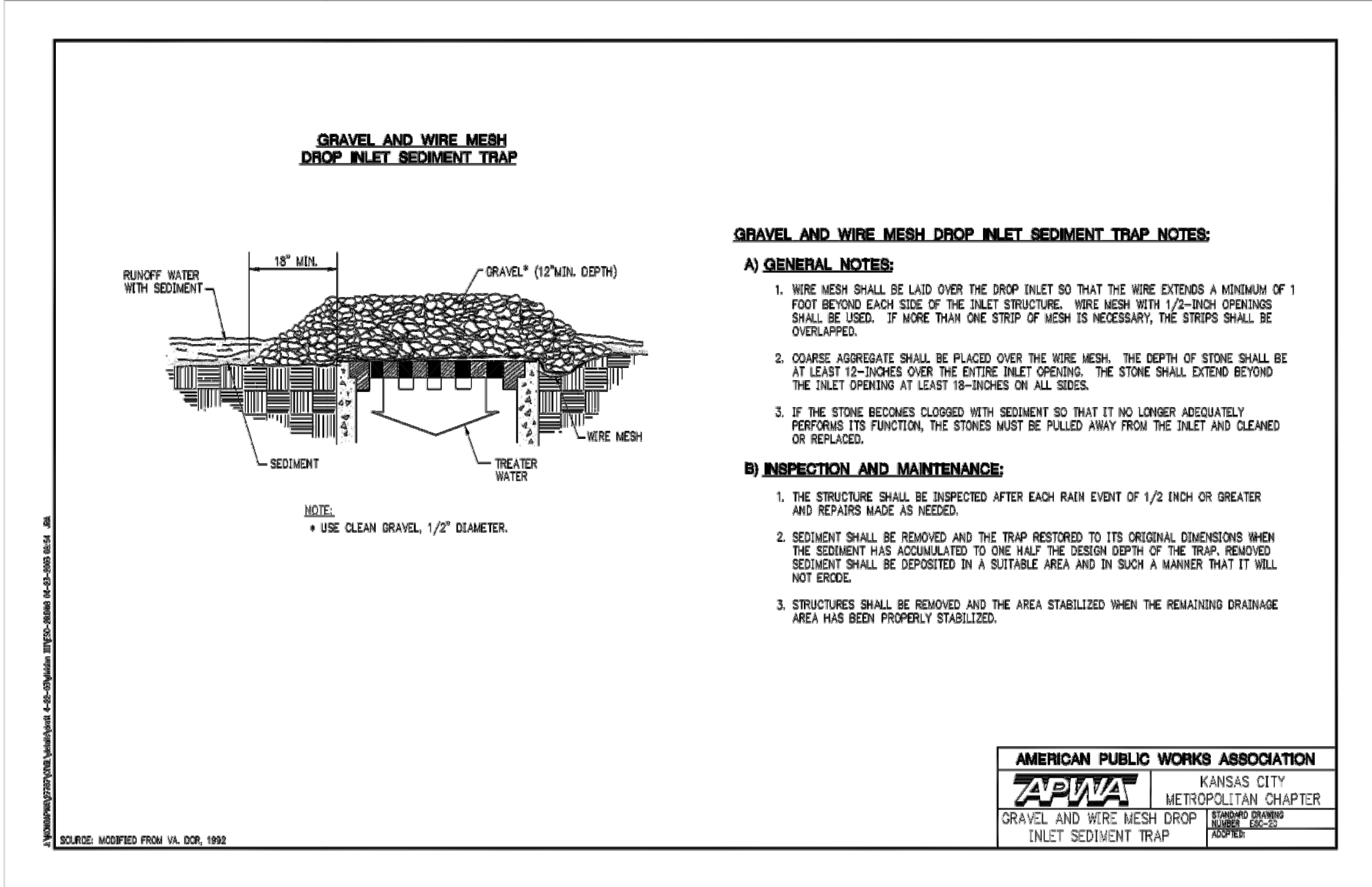
1 BUILDING SEWER STUB AND RISER
 C506 N.T.S.



3 TEMPORARY CONSTRUCTION ENTRANCE
 C506 N.T.S.



2 CURB DETAILS
 C506 N.T.S.



4 AREA INLET SEDIMENT TRAP
 C506 N.T.S.

ARCHITECTURE
 LANDSCAPE
 ARCHITECTURE
 INTERIORS
 ENERGY SERVICES

NSPJ ARCHITECTS
 3515 W. 75TH ST., SUITE 201
 PRAIRIE VILLAGE, KS 66208

P. 913.831.1415
 F. 913.831.1563
 NSPJARCH.COM
 © COPYRIGHT 2015

McCLURE ENGINEERING CO.
 building strong communities.
 1901 Pennsylvania Drive
 Columbia, MO 65202
 P 573-814-1568
 F 573-814-1128

MISSOURI CERTIFICATE OF AUTHORITY
 NO. E-2008023253
 EXPIRES: DECEMBER 31, 2016

STATE OF MISSOURI
 KEENAN SIMON
 NUMBER
 09-2016017682
 PROFESSIONAL ENGINEER

09/15/2016
 Keenan Simon
 MO-2016017682
 Expires: 12-31-2016

A NEW APARTMENT COMMUNITY AT:
SUMMIT SQUARE
 701 NW WARD RD.
 LEE'S SUMMIT, MISSOURI

DRAWING RELEASE LOG

- 03.04.2016 - PDF SUBMITTAL
- 06.09.2016 - FDP SUBMITTAL
- 07.01.2016 - 80% PROGRESS SET
- 07.15.2016 - PERMIT SUBMITTAL
- 08.05.2016 - BID SET
- 09.15.2016 - BID SET

REVISIONS

DATE
 09/15/2016
 JOB NO.
 80816033
 DRAWN BY:
 GRK
 SHEET NO.
 DETAILS
C506