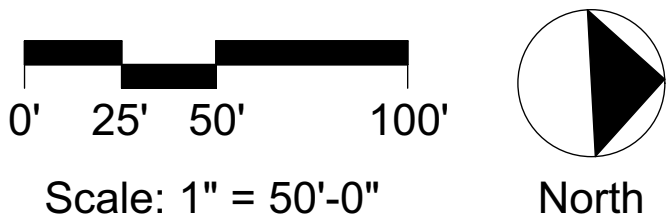


Cityscape
Residential

RELEASED FOR
PERMITTING

MATERIAL SELECTED WILL BE ACCEPTABLE PER THE CLIMATE AND LOCATION OF PROPERTY AND WILL BE OF HIGH QUALITY MATERIAL.



Revisions:

Date:	Description:
31 Aug 2016	Per city comments

PERMIT
SUBMITTAL

Apartments -
Village at
View High

Lee's Summit,
Missouri

A Residential Development by
Cityscape
Residential

This drawing as an instrument of
services, is and shall remain the
property of SGN+A and shall not
be reproduced, published or used
in any way without permission of
SGN+A, Inc.

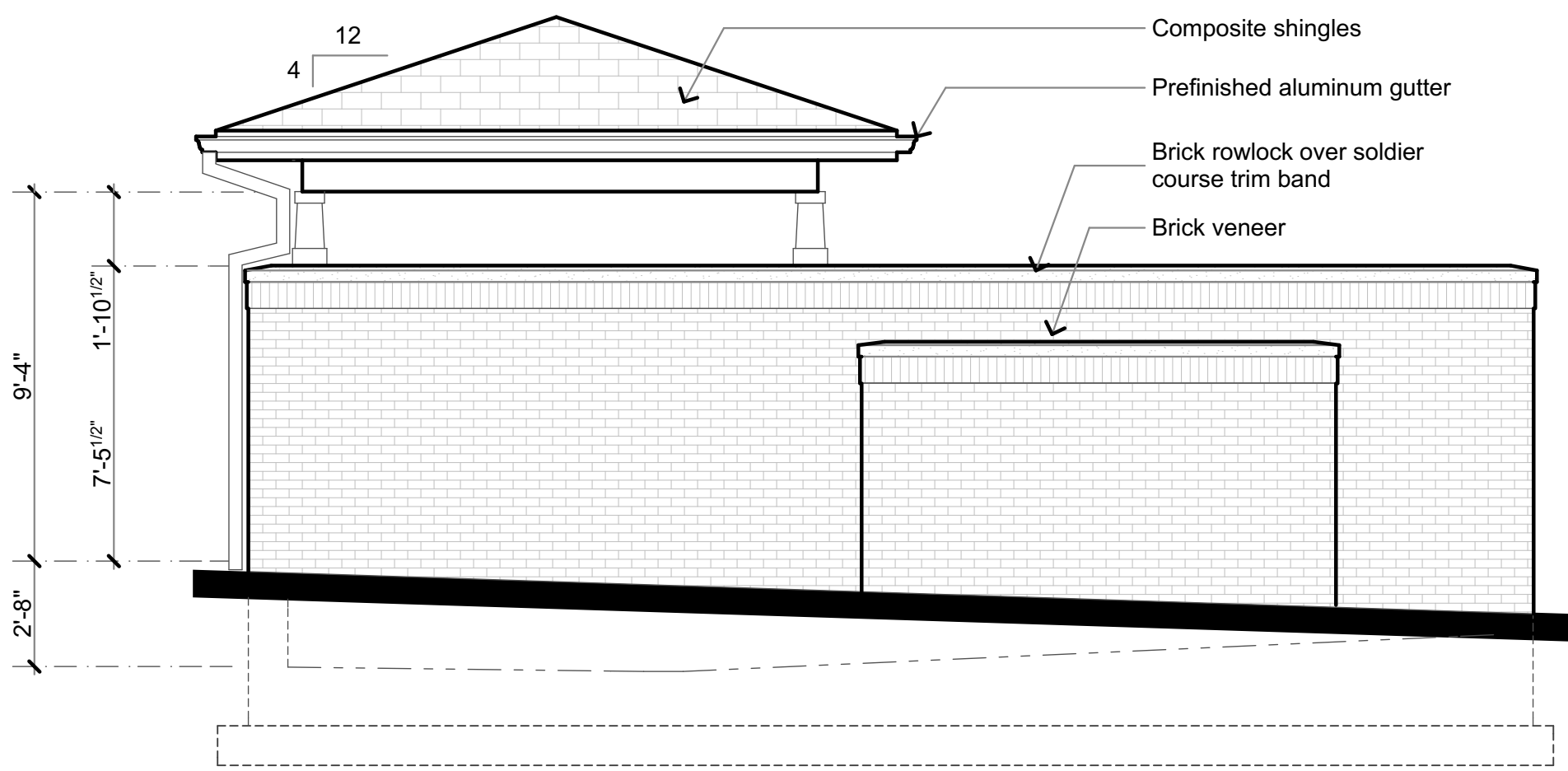
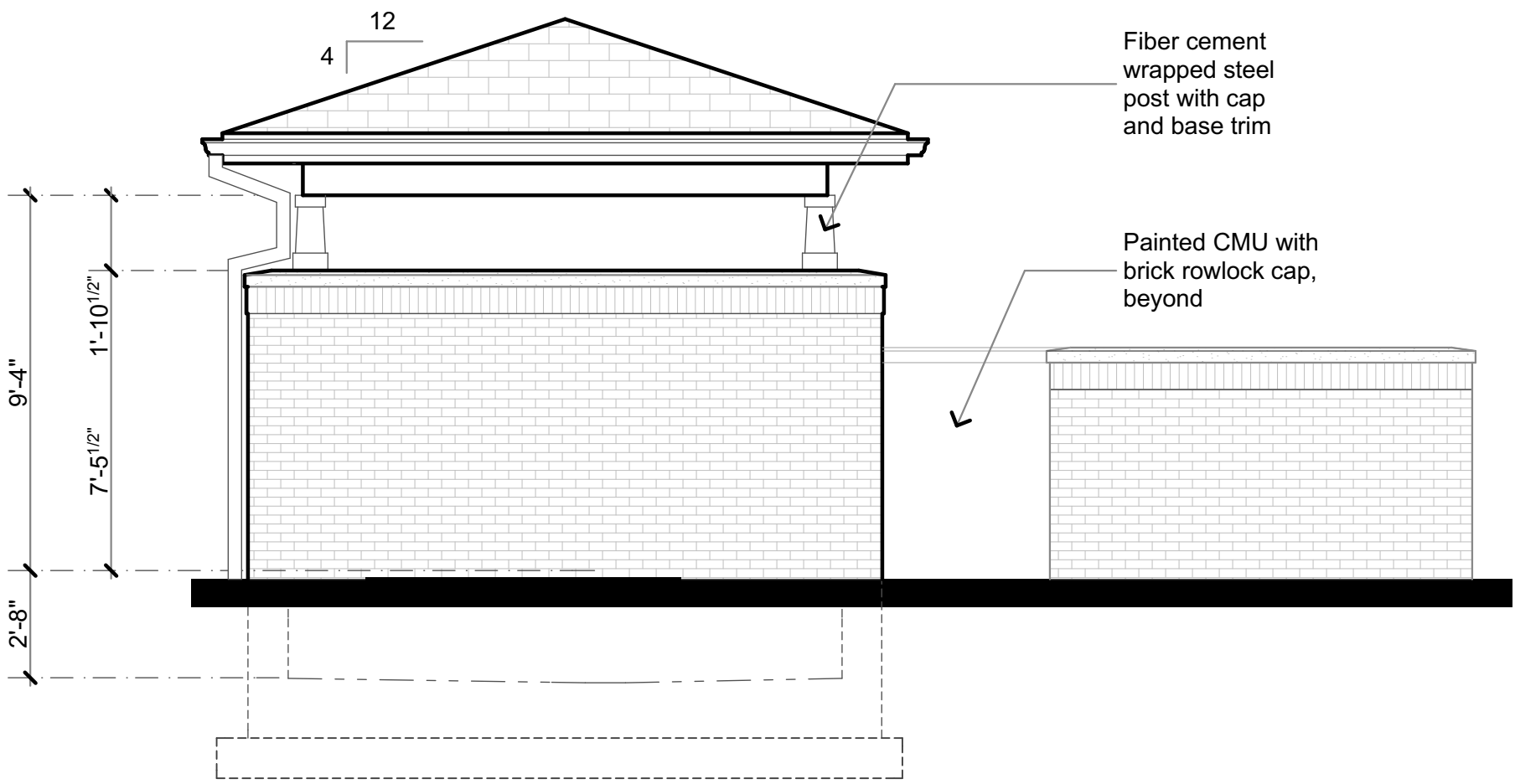
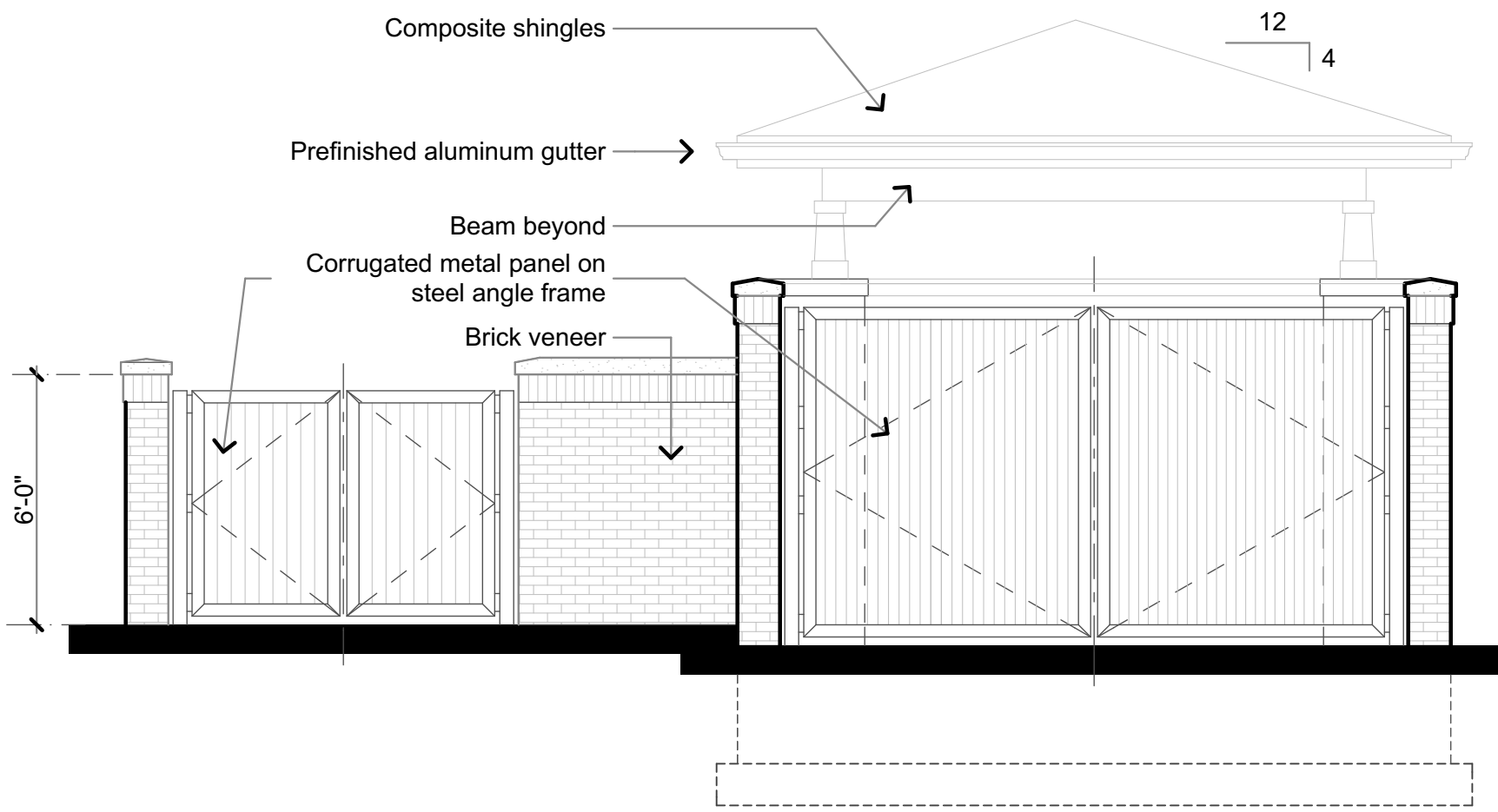
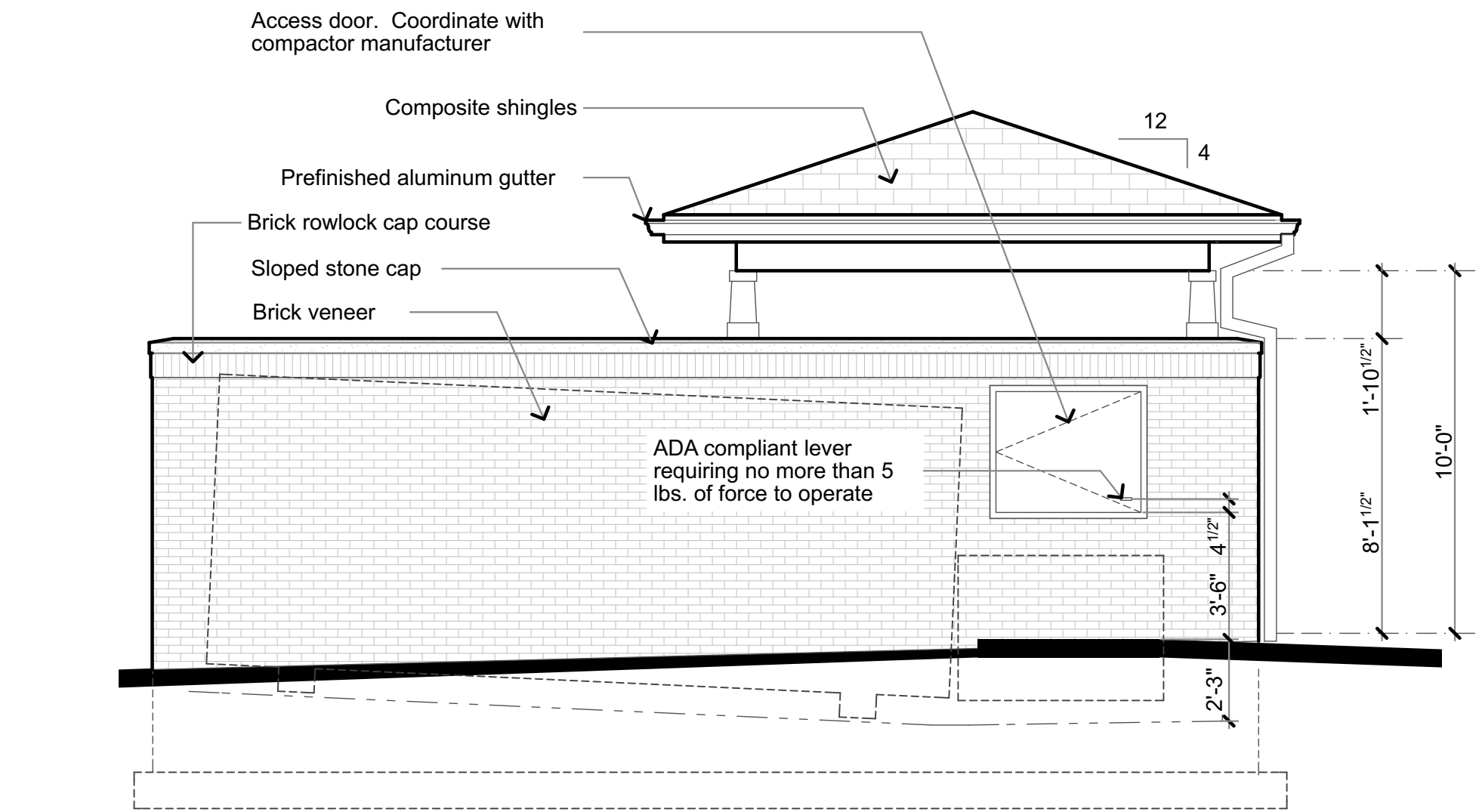
Sheet Title:
LANDSCAPE
PLAN

Date:
22 July 2016

Sheet Number:

LS2

RELEASED FOR
PERMITTING



1 Trash Enclosure Elevations

SCALE: 1/4" = 1'-0"

GENERAL NOTES:

1. UNLESS NOTED OTHERWISE, ALL POLE MOUNTED SITE LIGHTS SHALL BE INSTALLED AT 20'-0" AFF.

KEY NOTES:

- ① POLE LIGHT SHALL BE INSTALLED AT 15'-0" AFF

Statistics						
Description	Symbol	Avg	Max	Min	Max/Min	Avg/Min
SITE	+	1.0 fc	3.6 fc	0.2 fc	18.0:1	5.0:1

Revisions:

Date: Description:

Preliminary
Design Concepts

Apartments -
Village at View
High

Lee's Summit, Missouri

A Residential Development by:



This drawing as an instrument of services, is and shall remain the property of SGN+A and shall not be reproduced, published or used in any way without permission of SGN+A, Inc.

Sheet Title:

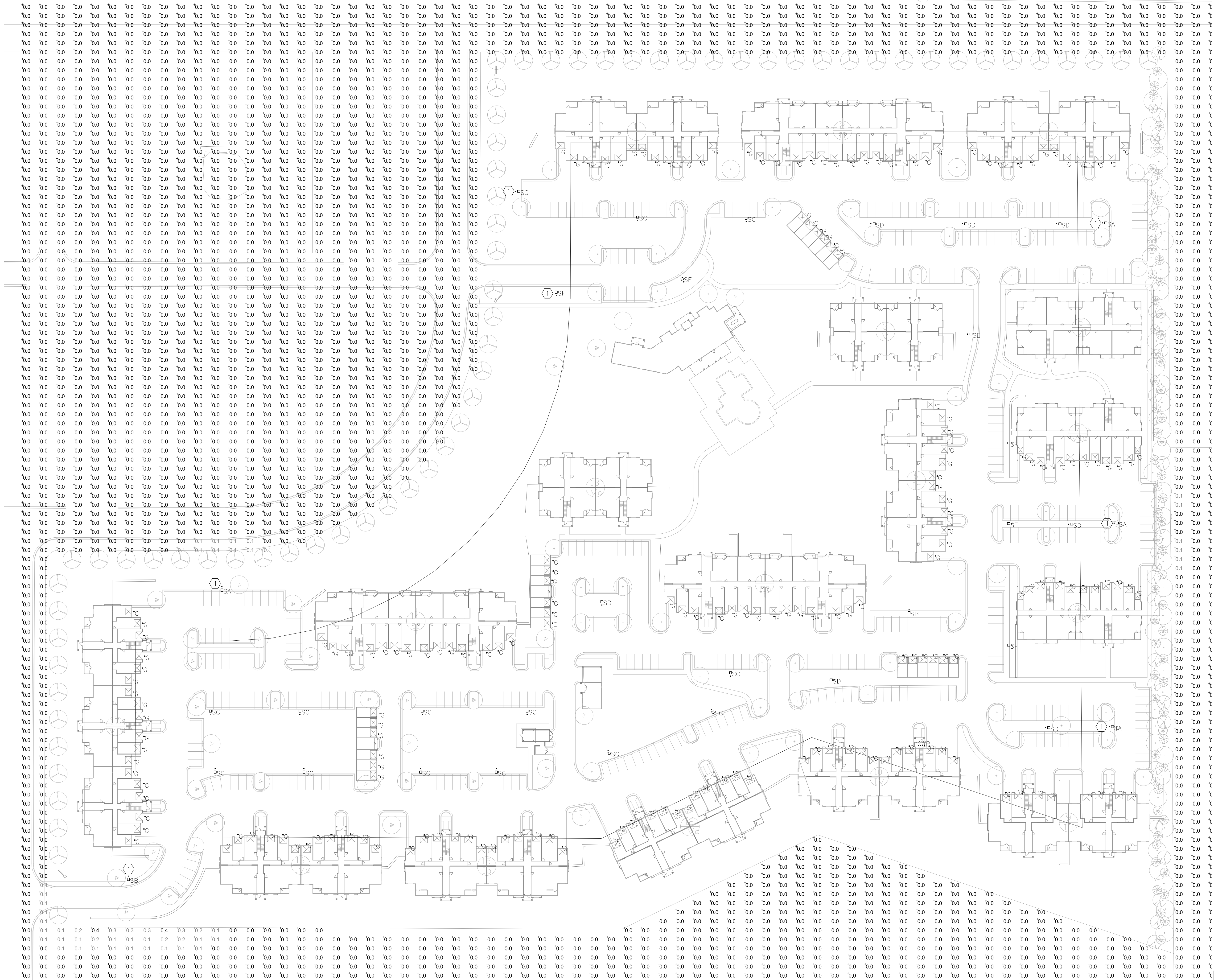
SITE PLAN -
LIGHTING

Date:

8/30/2016

Sheet Number:

E1.0



1 SITE PLAN - LIGHTING AT PROPERTY LINE
SCALE: 1" = 50'-0"

GENERAL NOTES:

1. UNLESS NOTED OTHERWISE, ALL POLE MOUNTED SITE LIGHTS SHALL BE INSTALLED AT AT 20'-0" AFF.

KEY NOTES:

- ① POLE LIGHT SHALL BE INSTALLED AT 15'-0" AFF

Statistics						
Description	Symbol	Avg	Max	Min	Max/Min	Avg/Min
PROPERTY LINE	+	0.0 fc	0.4 fc	0.0 fc	N/A	N/A

SGN+A

Planning • Architecture
Landscape Architecture

SGN+A, Inc.
3115 West Ponce de Leon Avenue
Suite 755
Decatur, GA. 30030
Tel: 404.373.7370
Fax: 404.373.7372
www.sgnplusa.com

Revisions:

Date: Description:

Preliminary
Design Concepts

Apartments -
Village at View
High

Lee's Summit, Missouri

A Residential Development by:



This drawing as an instrument of services, is and shall remain the property of SGN+A and shall not be reproduced, published or used in any way without permission of SGN+A, Inc.

Sheet Title:

SITE PLAN -
LIGHTING AT
PROPERTY LINE

Date:

8/30/2016

Sheet Number:

E1.1



Not Released for Construction

PERMIT
SUBMITTAL

Lee's Summit,
Missouri

A Residential Development b

This drawing as an instrument of services, is and shall remain the property of SGN+A and shall not be reproduced, published or used in any way without permission of SGN+A, Inc.

Date:
22 July 2016

S1



2 Sign Section

SCALE: 1/2" = 1'-0"

