

AN ORDINANCE VACATING A CERTAIN EASEMENT LOCATED WITHIN THE PLAT ENTITLED "SAINT LUKE'S HOSPITAL OF LEE'S SUMMIT, LOT 1" IN THE CITY OF LEE'S SUMMIT, MISSOURI.

WHEREAS, Application #PL2012-151 was submitted by St. Luke's East Hospital, requesting vacation of a utility easement within "Saint Luke's Hospital of Lee's Summit, Lot 1", a recorded subdivision in Lee's Summit, Missouri; and,

WHEREAS, the minor plat entitled "Saint Luke's Hospital of Lee's Summit, Lot 1" was approved by the City of Lee's Summit and recorded with the County Director of Records by Document No. 2004-I-0059823 on June 22, 2004, and said easement was referenced on said plat; and,

WHEREAS, the utility companies have been contacted and had no objection to the proposed vacation; and,

WHEREAS, the Public Works and Water Utilities Departments for the City of Lee's Summit have determined that no other uses exist for said easement; and,

WHEREAS, the Planning Commission considered the request on January 8, 2013, and rendered a report to the City Council recommending that the vacation of easement be approved; and,

WHEREAS, the City Council for the City of Lee's Summit has determined that no damages are ascertainable by reason of such vacation.

NOW, THEREFORE, BE IT ORDAINED BY THE COUNCIL OF THE CITY OF LEE'S SUMMIT, MISSOURI, as follows:

SECTION 1. That the following described easement, located within "Saint Luke's Hospital of Lee's Summit, Lot 1", is hereby and herewith vacated:

Tract 1:

A TRACT OF LAND, ALL BEING A PART OF SAINT LUKE'S HOSPITAL OF LEE'S SUMMIT, LOT 1, RECORDED IN THE OFFICE OF THE RECORDER OF DEEDS IN SAID COUNTY AND STATE AS DOCUMENT NO. 2004I0059823, IN BOOK 82 AT PAGE 1, SITUATE IN THE SOUTHEAST QUARTER OF SECTION 30, TOWNSHIP 48, RANGE 31 IN JACKSON COUNTY, MISSOURI, BEING MORE PARTICULARLY DESCRIBED AS FOLLOWS:

COMMENCING AT THE NORTHWEST CORNER OF LOT 1, SAINT LUKE'S HOSPITAL OF LEE'S SUMMIT, LOT 1; THENCE S 01°36'49" W, ALONG THE WEST LINE OF SAID LOT 1, A DISTANCE OF 133.12 FEET, TO A POINT; THENCE S 88°23'11" E, A DISTANCE OF 334.34 FEET, TO THE TRUE POINT OF BEGINNING OF SUBJECT TRACT; THENCE N 47°00'09" W, A DISTANCE OF 4.12 FEET; THENCE N 42°59'51" E, A DISTANCE OF 16.41 FEET; THENCE N 65°08'43" E, A DISTANCE OF 61.10 FEET; THENCE S 47°00'09" E, A DISTANCE OF 6.55 FEET; THENCE S 42°59'51" W, A DISTANCE OF 4.00 FEET; THENCE S 47°00'09" E, A DISTANCE OF 2.62 FEET; THENCE S 65°08'43" W, A DISTANCE OF 74.50 FEET, TO THE TRUE POINT OF BEGINNING OF SUBJECT TRACT.

Tract 2:

A TRACT OF LAND, ALL BEING A PART OF SAINT LUKE'S HOSPITAL OF LEE'S SUMMIT, LOT 1, RECORDED IN THE OFFICE OF THE RECORDER OF DEEDS IN SAID COUNTY AND STATE AS DOCUMENT NO. 2004I0059823, IN BOOK 82 AT PAGE 1, SITUATE IN THE SOUTHEAST QUARTER OF SECTION 30, TOWNSHIP 48, RANGE 31 IN JACKSON COUNTY, MISSOURI, BEING MORE PARTICULARLY DESCRIBED AS FOLLOWS:

COMMENCING AT THE NORTHWEST CORNER OF LOT 1, SAINT LUKE'S HOSPITAL OF LEE'S SUMMIT, LOT 1; THENCE S 01°36'49" W, ALONG THE WEST LINE OF SAID LOT 1, A DISTANCE OF 113.31 FEET, TO A POINT; THENCE S 88°23'11" E, A DISTANCE OF 346.32 FEET, TO THE TRUE POINT OF BEGINNING OF SUBJECT TRACT; THENCE N 42°59'51" E, A DISTANCE OF 26.88 FEET; THENCE N 64°50'01" E, A DISTANCE OF 25.14 FEET; THENCE S 47°00'09" E, A DISTANCE OF 10.77 FEET; THENCE S 64°50'01" E, A DISTANCE OF 54.10 FEET, TO THE TRUE POINT OF BEGINNING OF SUBJECT TRACT.

SECTION 2. That the City Clerk be and is hereby authorized and directed to acknowledge a copy of this ordinance and to record same in the Office of the Recorder of Deeds of the County in which the property is located.

SECTION 3. That this ordinance shall be in full force and effect from and after the date of its passage and adoption, and approval by the Mayor.

PASSED by the City Council of the City of Lee's Summit, Missouri, this 24th day of January, 2013.

ATTEST:


City Clerk Denise R. Chisum


Mayor Randall L. Rhoads


APPROVED by the Mayor of said city this 25th day of January, 2013.

ATTEST:


City Clerk Denise R. Chisum


Mayor Randall L. Rhoads

APPROVED AS TO FORM


City Attorney Teresa S. Williams

Date: November 19, 2012

County: Jackson County

Planning & Development

Section: (30-48-31) SE ¼,

General Area: SAINT LUKE'S HOSPITAL OF LEE'S SUMMIT, LOT 1

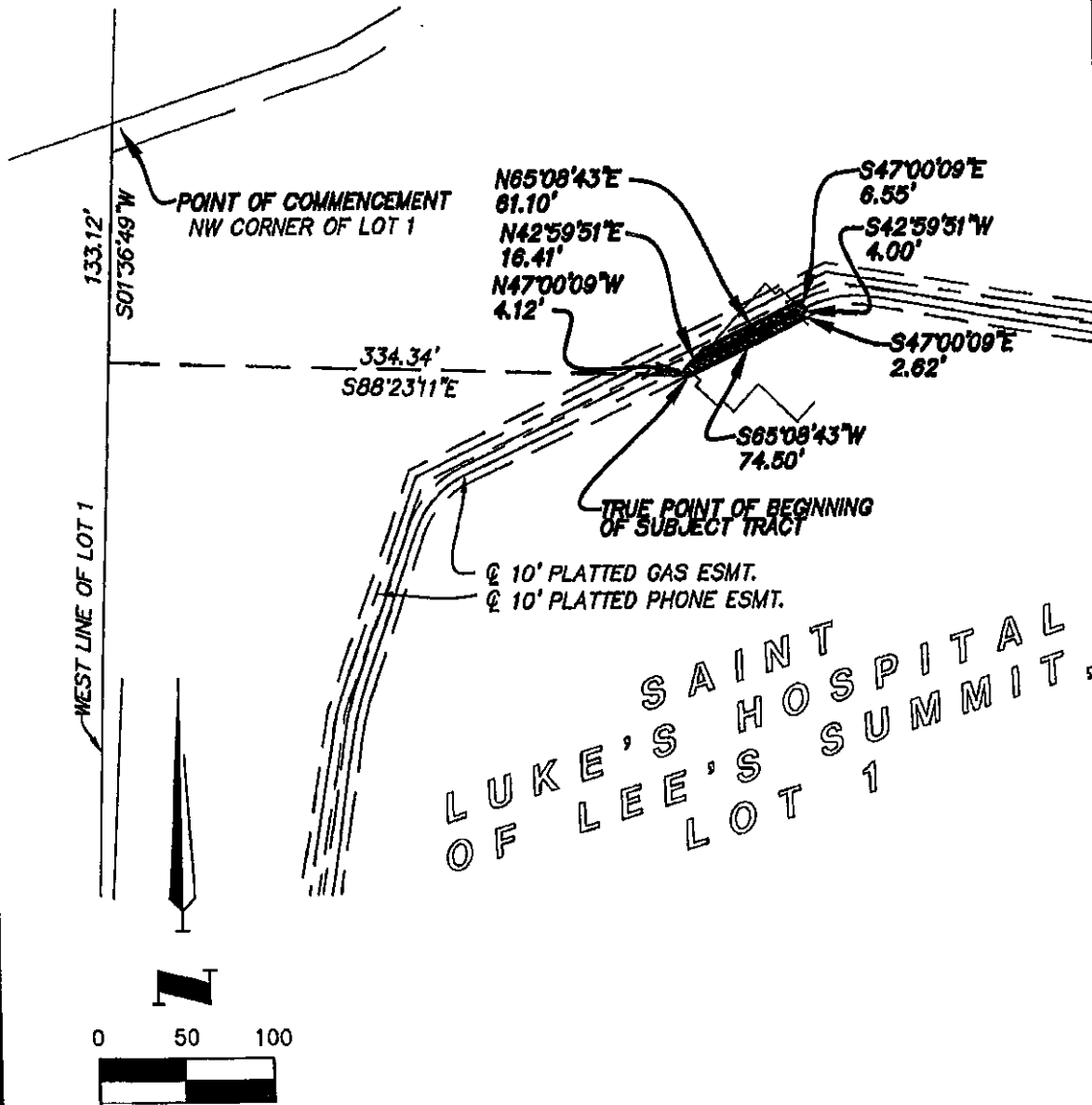
Specific Purpose: Vacation of a portion of the platted 10' gas easement (2)

A tract of land, all being a part of SAINT LUKE'S HOSPITAL OF LEE'S SUMMIT, LOT 1, recorded in the office of the Recorder of Deeds in said county and state as Document No. 200410059823, in Book 82 at Page 1, situate in the Southeast Quarter of Section 30, Township 48, Range 31, in Jackson County, Missouri, being more particularly described as follows:

Commencing at the Northwest corner of Lot 1, SAINT LUKE'S HOSPITAL OF LEE'S SUMMIT, LOT 1; thence S 01°36'49" W, along the West line of said Lot 1, a distance of 133.12 feet, to a point; thence S 88° 23' 11" E, a distance of 334.34 feet, to the True Point of Beginning of Subject Tract; thence N 47° 00' 09" W, a distance of 4.12 feet; thence N 42° 59' 51" E, a distance of 16.41 feet; thence N 65° 08' 43" E, a distance of 61.10 feet; thence S 47° 00' 09" E, a distance of 6.55 feet; thence S 42° 59' 51" W, a distance of 4.00 feet; thence S 47° 00' 09" E, a distance of 2.62 feet; thence S 65° 08' 43" W, a distance of 74.50 feet, to the true point of beginning of subject tract.



EXHIBIT



SHAFER, KLINE & WARREN, INC.

11250 CORPORATE AVENUE, LENEXA, KANSAS 66219
PHONE: 913-888-7800 FAX: 913-888-7868
<http://www.skw-inc.com>

PROJECT NO. 700303-230

DATE 11/19/2012

BY CJM

-2018-151

RECEIVED

NOV 20 2012

Planning & Development

Date: November 19, 2012
County: Jackson County
Section: (30-48-31) SE ¼,
General Area: SAINT LUKE'S HOSPITAL OF LEE'S SUMMIT, LOT 1
Specific Purpose: Vacation of a portion of the platted 10' phone easement (2)

A tract of land, all being a part of SAINT LUKE'S HOSPITAL OF LEE'S SUMMIT, LOT 1, recorded in the office of the Recorder of Deeds in said county and state as Document No. 2004I0059823, in Book 82 at Page 1, situate in the Southeast Quarter of Section 30, Township 48, Range 31, in Jackson County, Missouri, being more particularly described as follows:

Commencing at the Northwest corner of Lot 1, SAINT LUKE'S HOSPITAL OF LEE'S SUMMIT, LOT 1; thence S 01°36'49" W, along the West line of said Lot 1, a distance of 113.31 feet, to a point; thence S 88° 23' 11" E, a distance of 346.32 feet, to the True Point of Beginning of Subject Tract; thence N 42° 59' 51" E, a distance of 26.88 feet; thence N 64° 50' 01" E, a distance of 25.14 feet; thence S 47° 00' 09" E, a distance of 10.77 feet; thence S 64° 50' 01" W, a distance of 54.10 feet, to the true point of beginning of subject tract.



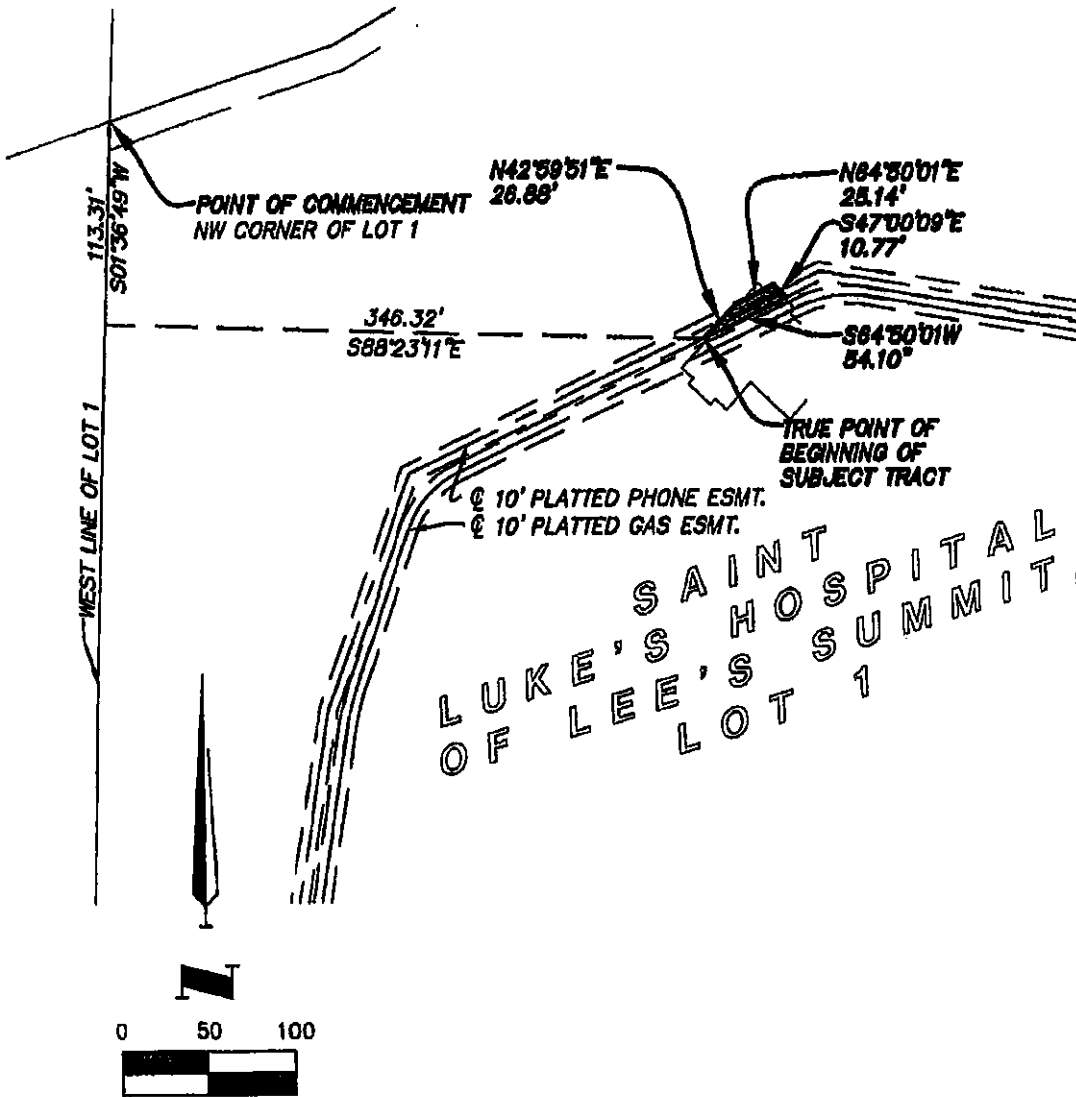
Stan W. Lloyd
11-20-12

RECEIVED

EXHIBIT

NOV 20 2012

Planning & Development



LUKE'S SAINT HOSPITAL
OF LEE'S SUMMIT,
LOT 1



SHAFFER, KLINE & WARREN, INC.

11250 CORPORATE AVENUE, LENEXA, KANSAS 66219

PHONE: 913-888-7800

FAX: 913-888-7868

<http://www.skw-inc.com>

PROJECT NO. 700303-230

DATE 11/19/2012

BY CJM

Appl. #PL2012-151 - VAC OF EASEMENT
St. Luke's East Hospital;
St. Luke's East Hospital, applicant

