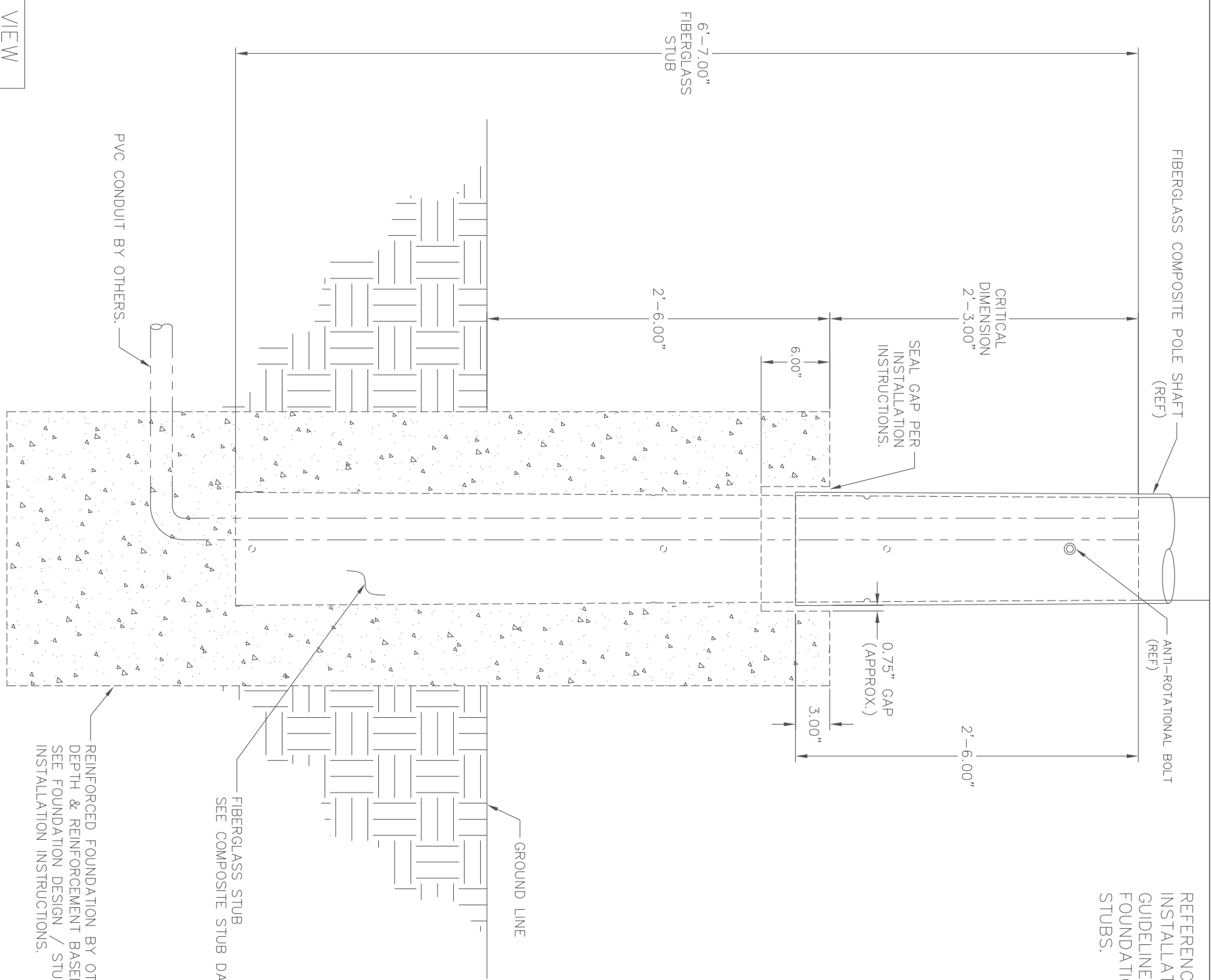


ELEVATION VIEW



FOUNDATION VIEW

REFERENCE "COSTCO LIGHT POLE INSTALLATION INSTRUCTION GUIDELINES" WHEN POURING FOUNDATIONS AND SETTING UP STUBS.

REV	DATE	BY	CHECK	DESCRIPTION
—	JBW 05/10/16	EH 05/10/16		
—	—	—	—	—

TITLE

COSTCO STANDARD DESIGNS 100MPH, 150MPH, 180MPH(FL) COMPOSITE LIGHTING STRUCTURES

VALMONT INDUSTRIES, INC. RESERVES THE RIGHT TO INSTALL VARIOUS ENGINEER APPROVED, MATERIAL HANGING ACCOMMODATIONS TO FACILITATE THE MANUFACTURING PROCESS.

valmont COMPOSITE STRUCTURES

(803) 276-5505

PAGE NUMBER:	1	OF	5
DRAWING NUMBER	VCS100,150,180		

POLE & STUB DATA -- 100MPH

		COMPOSITE POLE INFORMATION						COMPOSITE STUB INFORMATION								
FIXTURE MOUNTING HEIGHT (FT)	QTY.	COSTCO CATALOG NUMBER	VALMONT PRODUCTION PART NUMBER (1 FIXTURE)	VALMONT PRODUCTION PART NUMBER (2 FIXTURE)	MANDREL TYPE	POLE LENGTH (FT)	MANDREL STARTING DIAMETER (IN)	POLE BASE I.D. (IN)	POLE TOP I.D. (IN)	WALL THK. (IN)	FOUNDATION TYPE	BASE O.D. (IN)	TOP O.D. (IN)	WALL THK (IN)	TUBE LENGTH	VALMONT PRODUCTION PART NUMBER
36.5		COSTCO 100-10-36.5	CA36.5AM19	CA36.5AM28	T-5211	34.50	10.53	10.43	5.77	0.300						
	36	COSTCO 100-10-36	CA36AM19	CA36AM28	T-5211	34.00	10.53	10.43	5.77	0.300						
	35	COSTCO 100-10-35	CA35AM19	CA35AM28	T-5211	33.00	10.53	10.43	5.83	0.300	A	10.97	10.05	0.375	6'-7"	A-FDN-STUB
	34	COSTCO 100-10-34	CA34AM19	CA34AM28	T-5211	32.00	10.53	10.43	5.95	0.300						
	33	COSTCO 100-10-33	CA33AM19	CA33AM28	T-5211	31.00	10.53	10.43	6.09	0.300						
	32	COSTCO 100-10-32	CA32AM19	CA32AM28	T-5211	30.00	10.53	10.43	6.23	0.300						
	31	COSTCO 100-10-31	CB31AM19	CB31AM28	T-5211	29.00	9.73	9.63	5.57	0.300						
	30	COSTCO 100-10-30	CB30AM19	CB30AM28	T-5211	28.00	9.73	9.63	5.71	0.300						
	29	COSTCO 100-10-29	CB29AM19	CB29AM28	T-5211	27.00	9.73	9.63	5.85	0.300	B	10.17	9.25	0.375	6'-7"	B-FDN-STUB
	28	COSTCO 100-10-28	CB28AM19	CB28AM28	T-5211	26.00	9.73	9.63	5.99	0.300						
	27	COSTCO 100-10-27	CC27AM19	CC27AM28	T-5147	25.00	7.96	7.89	4.39	0.300						
	26	COSTCO 100-10-26	CC26AM19	CC26AM28	T-5147	24.00	7.96	7.89	4.53	0.300						
	25	COSTCO 100-10-25	CC25AM19	CC25AM28	T-5147	23.00	7.96	7.89	4.67	0.300						
	24	COSTCO 100-10-24	CC24AM19	CC24AM28	T-5147	22.00	7.96	7.89	4.81	0.300						
	23	COSTCO 100-10-23	CC23AM19	CC23AM28	T-5147	21.00	7.96	7.89	4.95	0.300	C	8.43	7.51	0.375	6'-7"	C-FDN-STUB
	22	COSTCO 100-10-22	CC22AM19	CC22AM28	T-5147	20.00	7.96	7.89	5.09	0.300						
	21	COSTCO 100-10-21	CC21AM19	CC21AM28	T-5147	19.00	7.96	7.89	5.23	0.300						
	20	COSTCO 100-10-20	CC20AM19	CC20AM28	T-5147	18.00	7.96	7.89	5.37	0.300						
	15	COSTCO 100-10-15	CC15AM19	CC15AM28	T-5147	13.00	7.96	7.89	6.07	0.300						

FINISH DATA		COSTCO CATALOG NUMBER		STUB LEVELING JIG	
FINISH COAT:	COLOR:	SAMPLE LOGIC	VALMONT PART NUMBER	PRODUCT DESCRIPTION	SPECIAL JIG DESIGNED TO
COLORTHANE POLYURETHANE ENAMEL	COSTCO BRONZE	WIND SPEED(MPH) → 100-10-36.5 MAX FIXTURE EPA(SQ.FT.) → FIXTURE MOUNTING HEIGHT(FT) →	J168418	COMPENSATE FOR TAPER RATE AND ASSIST IN VERTICAL POSITIONING OF THE STUB DURING THE INSTALLATIONS PROCESS.	
VALMONT-WHATLEY SPEC.: F-601AM					

NOTES:
 1) PROJECT SITE PLANS MUST BE PROVIDED WITH EVERY ORDER RELEASE.
 2) REFERENCE "COSTCO LIGHT POLE INSTALLATION INSTRUCTION GUIDELINES" WHEN POURING FOUNDATIONS AND SETTING UP STUBS.

TITLE COSTCO STANDARD POLE DESIGNS - 100MPH POLE DATA COMPOSITE LIGHTING STRUCTURES	VALMONT INDUSTRIES, INC. RESERVES THE RIGHT TO INSTALL VARIOUS ENGINEER APPROVED MATERIAL HANGING ACCOMMODATIONS TO FACILITATE THE MANUFACTURING PROCESS.	 COMPOSITE STRUCTURES (803) 276-5505
PAGE NUMBER: 2 OF 5 DRAWING NUMBER: VCS100		

POLE & STUB DATA – 150MPH

FIXTURE MOUNTING HEIGHT (FT)	QTY.	COSTCO CATALOG NUMBER	VALMONT PRODUCTION PART NUMBER (1 FIXTURE)	VALMONT PRODUCTION PART NUMBER (2 FIXTURE)	COMPOSITE POLE INFORMATION						STUB INFORMATION					
					MANDREL TYPE	POLE LENGTH (FT)	MANDREL STARTING DIAMETER (IN)	POLE BASE I.D. (IN)	POLE TOP I.D. (IN)	WALL THK. (IN)	FOUNDATION TYPE	BASE I.D. (IN)	TOP I.D. (IN)	WALL THK. (IN)	TUBE LENGTH	VALMONT PRODUCTION PART NUMBER
36.5		COSTCO 150-10-36.5	CD36.5AM19	CD36.5AM28	T-5211	34.50	10.53	10.43	5.14	0.375						
36		COSTCO 150-10-36	CD36AM19	CD36AM28	T-5211	34.00	10.53	10.43	5.21	0.375						
35		COSTCO 150-10-35	CD35AM19	CD35AM28	T-5211	33.00	10.53	10.43	5.35	0.375						
34		COSTCO 150-10-34	CD34AM19	CD34AM28	T-5211	32.00	10.53	10.43	5.49	0.375	D	10.97	10.05	0.50	6'-7"	D-FDN-STUB
33		COSTCO 150-10-33	CD33AM19	CD33AM28	T-5211	31.00	10.53	10.43	5.63	0.375						
32		COSTCO 150-10-32	CD32AM19	CD32AM28	T-5211	30.00	10.53	10.43	5.77	0.375						
31		COSTCO 150-10-31	CE31AM19	CE31AM28	T-5211	29.00	9.73	9.63	5.14	0.375						
30		COSTCO 150-10-30	CE30AM19	CE30AM28	T-5211	28.00	9.73	9.63	5.28	0.375						
29		COSTCO 150-10-29	CE29AM19	CE29AM28	T-5211	27.00	9.73	9.63	5.42	0.375	E	10.17	9.25	0.375	6'-7"	E-FDN-STUB
28		COSTCO 150-10-28	CE28AM19	CE28AM28	T-5211	26.00	9.73	9.63	5.56	0.375						
27		COSTCO 150-10-27	CF27AM19	CF27AM28	T-5211	25.00	9.32	9.23	4.99	0.375						
26		COSTCO 150-10-26	CF26AM19	CF26AM28	T-5211	24.00	9.32	9.23	5.13	0.375						
25		COSTCO 150-10-25	CF25AM19	CF25AM28	T-5211	23.00	9.32	9.23	5.27	0.375						
24		COSTCO 150-10-24	CF24AM19	CF24AM28	T-5211	22.00	9.32	9.23	5.41	0.375						
23		COSTCO 150-10-23	CF23AM19	CF23AM28	T-5211	21.00	9.32	9.23	5.55	0.375	F	9.77	8.85	0.375	6'-7"	F-FDN-STUB
22		COSTCO 150-10-22	CF22AM19	CF22AM28	T-5211	20.00	9.32	9.23	5.69	0.375						
21		COSTCO 150-10-21	CF21AM19	CF21AM28	T-5211	19.00	9.32	9.23	5.83	0.375						
20		COSTCO 150-10-20	CF20AM19	CF20AM28	T-5211	18.00	9.32	9.23	5.97	0.375						
17		COSTCO 150-10-17	CF17AM19	CF17AM28	T-5211	15.00	9.32	9.23	6.39	0.375						

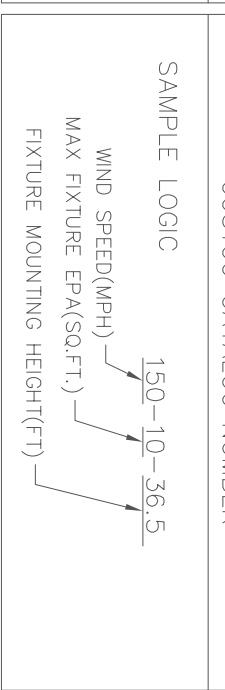
FINISH DATA

COSTCO CATALOG NUMBER

STUB LEVELING JIG

NOTES:
1) PROJECT SITE PLANS MUST BE PROVIDED WITH EVERY ORDER RELEASE.
2) REFERENCE "COSTCO LIGHT POLE INSTALLATION INSTRUCTION GUIDELINES" WHEN POURING FOUNDATIONS AND SETTING UP STUBS.

FINISH COAT: COLORTHANE POLYURETHANE ENAMEL
COLOR: COSTCO BRONZE
VALMONT-WHATLEY SPEC.: F-601AM



VALMONT PART NUMBER	PRODUCT DESCRIPTION
J168418	SPECIAL JIG DESIGNED TO COMPENSATE FOR TAPER RATE AND ASSIST IN VERTICAL POSITIONING OF THE STUB DURING THE INSTALLATIONS PROCESS.

JIG TO BE SUPPLIED WITH STUB PRE-SHIPMENTS UPON REQUEST ONLY. QUANTITY TO BE DETERMINED AT ORDER ENTRY.

TITLE
COSTCO
STANDARD POLE DESIGNS – 150MPH POLE DATA
COMPOSITE LIGHTING STRUCTURES

VALMONT INDUSTRIES, INC. RESERVES THE RIGHT TO INSTALL VARIOUS ENGINEER APPROVED MATERIAL HANGING ACCOMMODATIONS TO FACILITATE THE MANUFACTURING PROCESS.	
(803) 276-5505	PAGE NUMBER: 3 OF 5 DRAWING NUMBER: VSC150

POLE & STUB DATA -- 180MPH

		COMPOSITE POLE INFORMATION						COMPOSITE STUB INFORMATION								
FIXTURE MOUNTING HEIGHT (FT)	QTY.	COSTCO CATALOG NUMBER	VALMONT PRODUCTION PART NUMBER (1 FIXTURE)	VALMONT PRODUCTION PART NUMBER (2 FIXTURE)	MANDREL TYPE	POLE LENGTH (FT)	MANDREL STARTING DIAMETER (IN)	POLE BASE I.D. (IN)	POLE TOP I.D. (IN)	WALL THK. (IN)	FOUNDATION TYPE	BASE O.D. (IN)	TOP O.D. (IN)	WALL THK (IN)	TUBE LENGTH	VALMONT PRODUCTION PART NUMBER
36.5		COSTCO 180-10-36.5	CG36.5AM19	CG36.5AM28	T-5211	34.50	10.53	10.43	5.77	0.52						
	36	COSTCO 180-10-36	CG36AM19	CG36AM28	T-5211	34.00	10.53	10.43	5.77	0.52						
	35	COSTCO 180-10-35	CG35AM19	CG35AM28	T-5211	33.00	10.53	10.43	5.83	0.52	G	10.97	10.05	0.50	6'-7"	G-FDN-STUB
	34	COSTCO 180-10-34	CG34AM19	CG34AM28	T-5211	32.00	10.53	10.43	5.95	0.52						
	33	COSTCO 180-10-33	CG33AM19	CG33AM28	T-5211	31.00	10.53	10.43	6.09	0.52						
	32	COSTCO 180-10-32	CG32AM19	CG32AM28	T-5211	30.00	10.53	10.43	6.23	0.52						
	31	COSTCO 180-10-31	CH31AM19	CH31AM28	T-5211	29.00	9.73	9.63	5.57	0.52						
	30	COSTCO 180-10-30	CH30AM19	CH30AM28	T-5211	28.00	9.73	9.63	5.71	0.52	H	10.17	9.25	0.50	6'-7"	H-FDN-STUB
	29	COSTCO 180-10-29	CH29AM19	CH29AM28	T-5211	27.00	9.73	9.63	5.85	0.52						
	28	COSTCO 180-10-28	CH28AM19	CH28AM28	T-5211	26.00	9.73	9.63	5.99	0.52						
	27	COSTCO 180-10-27	CJ27AM19	CJ27AM28	T-5211	25.00	9.32	9.23	4.99	0.52						
	26	COSTCO 180-10-26	CJ26AM19	CJ26AM28	T-5211	24.00	9.32	9.23	5.13	0.52						
	25	COSTCO 180-10-25	CJ25AM19	CJ25AM28	T-5211	23.00	9.32	9.23	5.27	0.52						
	24	COSTCO 180-10-24	CJ24AM19	CJ24AM28	T-5211	22.00	9.32	9.23	5.41	0.52						
	23	COSTCO 180-10-23	CJ23AM19	CJ23AM28	T-5211	21.00	9.32	9.23	5.55	0.52	J	9.77	8.85	0.50	6'-7"	J-FDN-STUB
	22	COSTCO 180-10-22	CJ22AM19	CJ22AM28	T-5211	20.00	9.32	9.23	5.69	0.52						
	21	COSTCO 180-10-21	CJ21AM19	CJ21AM28	T-5211	19.00	9.32	9.23	5.83	0.52						
	20	COSTCO 180-10-20	CJ20AM19	CJ20AM28	T-5211	18.00	9.32	9.23	5.97	0.52						
	15	COSTCO 180-10-15	CJ15AM19	CJ15AM28	T-5211	13.00	9.32	9.23	6.39	0.52						

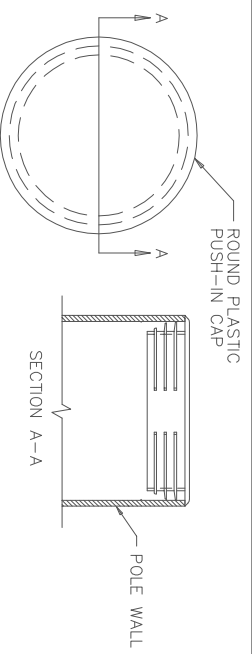
FINISH DATA

FINISH COAT: COLORTHANE POLYURETHANE ENAMEL
 COLOR: COSTCO BRONZE
 VALMONT-WHATLEY SPEC.: F-601AM

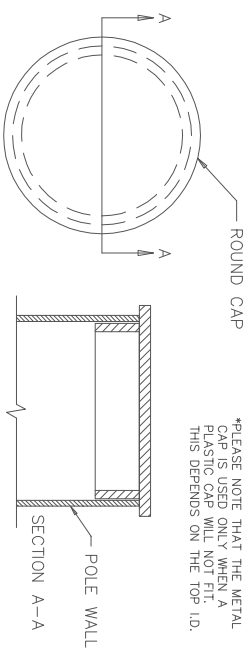
COSTCO CATALOG NUMBER		STUB LEVELING JIG	
SAMPLE LOGIC	VALMONT PART NUMBER	PRODUCT DESCRIPTION	JIG TO BE SUPPLIED WITH STUB PRE-SHIPMENTS UPON REQUEST ONLY. QUANTITY TO BE DETERMINED AT ORDER ENTRY.
180-10-36.5	J168418	SPECIAL JIG DESIGNED TO COMPENSATE FOR TAPER RATE AND ASSIST IN VERTICAL POSITIONING OF THE STUB DURING THE INSTALLATIONS PROCESS.	

NOTES:
 1) PROJECT SITE PLANS MUST BE PROVIDED WITH EVERY ORDER RELEASE.
 2) REFERENCE "COSTCO LIGHT POLE INSTALLATION INSTRUCTION GUIDELINES" WHEN POURING FOUNDATIONS AND SETTING UP STUBS.

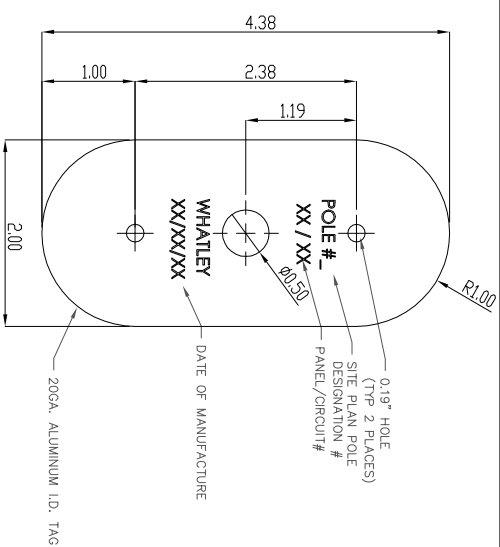
<p>TITLE COSTCO STANDARD FLORIDA 180 MPH DESIGN COMPOSITE LIGHTING STRUCTURES</p>	<p>VALMONT INDUSTRIES, INC. RESERVES THE RIGHT TO INSTALL VARIOUS ENGINEER APPROVED MATERIAL HANGING ACCOMMODATIONS TO FACILITATE THE MANUFACTURING PROCESS.</p> <p style="text-align: center;">valmont COMPOSITE STRUCTURES</p> <p>PAGE NUMBER: 4 OF 5 DRAWING NUMBER: VCS180FL</p>
--	--



*PLEASE NOTE THAT THE METAL CAP IS USED ONLY WHEN A PLASTIC CAP WILL NOT FIT. THIS DEPENDS ON THE TOP I.D.

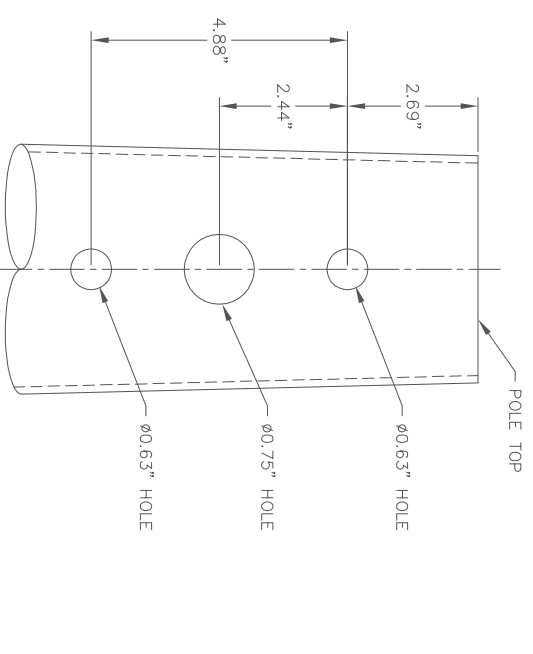


DETAIL 1 PLASTIC POLE TOP CAP
DETAIL 2 STEEL POLE TOP CAP



ALL TEXT TO BE MINIMUM 0.25" TALL AND TO BE STAMPED OR ENGRAVED ONTO ALUMINUM TAG.

DETAIL 5 COSTCO I.D. TAG



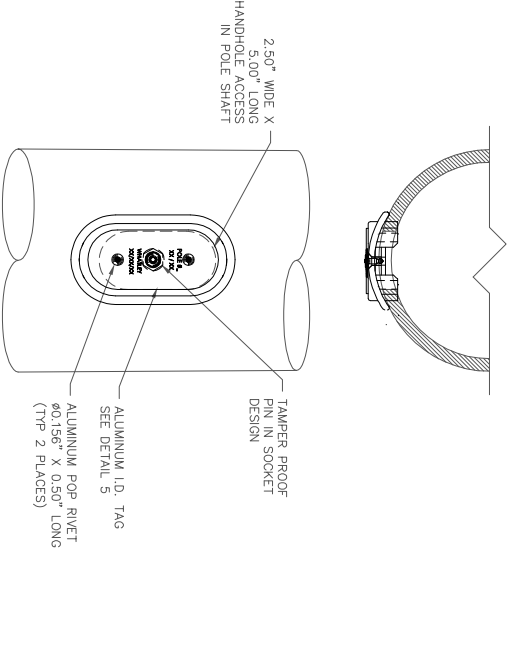
DETAIL 3 COOPER FIXTURE DRILL PATTERN



MATERIAL:
0.50" - TYPE HB BLIND BOLT HOT DIP GALVANIZED

INSTALLATION NOTE:
ANTI-ROTATIONAL BOLT IS LOCATED APPROX. 1'-6" UP FROM BASE OF COMPOSITE POLE SHAFT AND FIELD INSTALLED BY CONTRACTOR. 0.81" PRE-DRILLED HOLE IS PROVIDED IN COMPOSITE POLE SHAFT. PLEASE REFERENCE "STANDARD COSTCO LIGHT POLE INSTALLATION GUIDELINES" NOTE NUMBER 16.

DETAIL 6 ANTI-ROTATIONAL BOLT



DETAIL 4 HANDHOLE W/COVER & I.D. TAG

TITLE
COSTCO
STANDARD POLE DESIGN 100MPH, 150 MPH, 180 MPH(FL)
COMPOSITE LIGHTING STRUCTURES

VALMONT INDUSTRIES, INC. RESERVES
THE RIGHT TO INSTALL VARIOUS
ENGINEER APPROVED MATERIAL HANGING
ACCOMMODATIONS TO FACILITATE THE
MANUFACTURING PROCESS.



COMPOSITE STRUCTURES
(803) 276-5505

PAGE NUMBER: 5 OF 5
DRAWING NUMBER
VCS100,150,180