



**KAW
VALLEY
ENGINEERING**

**NPDES Storm Water Pollution Prevention Plan for
Storm Water Discharges Associated with
Construction Activity**

For

**Paxvesta, LLC
7280 NW 87th Terrace, Suite C-210
Kansas City, Missouri, 64153**

For

**Construction of
SMALLS SLIDERS**

In

**1050 SW Jefferson Street
Lee's Summit, Jackson County, Missouri**

**Prepared By:
Kaw Valley Engineering, Inc.**

A25D2009

November 2025

1.0	Purpose of Plan	1
2.0	Site Evaluation	2
2.1	Topography and Drainage	2
2.2	Soils	2
2.3	Runoff Water Quality	2
2.4	Receiving Waters	2
3.0	Site Construction Plan	2
3.1	Construction Activities	2
3.2	Construction Sequence	3
4.0	Storm Water Management Plan	4
4.1	General Description of Storm Water Management System	4
4.2	Runoff Coefficient	4
4.3	Project Site	5
4.3.1	Stabilization Practices	5
4.3.2	Structural Practices	5
5.0	Potential Storm Water Pollutant Sources and Control Measures	6
5.1	Construction Silt and Dust	6
5.2	Offsite Sediment Tracking	6
5.3	Petroleum Products	6
5.4	Sanitary Wastes	7
5.5	Hazardous Wastes	7
5.6	Fertilizers	7
5.7	Paints	7
5.8	Concrete Trucks	7
5.9	Waste Materials	7
5.10	Allowable Non-Storm Water Discharges	8
6.0	Best Management Practices	9
6.1	Good Housekeeping	9
6.2	Hazardous Materials	9
6.3	Spill Prevention and Response	9
7.0	Inspection, Maintenance, and Reporting Procedures	11
7.1	Erosion and Sediment Controls	11
7.2	Non-Storm Water Controls	11
7.3	Reporting	12
	<i>Inspection Form 1 - Erosion and Sedimentation Controls</i>	<i>13</i>
	<i>Inspection Form 2 – Non-Storm Water Source Controls</i>	<i>14</i>
	<i>Inspection Form 2 – Non-Storm Water Source Controls (Continued)</i>	<i>15</i>
	<i>Inspection Form 3 – Record of Plan Amendments</i>	<i>16</i>
8.0	Certification of Compliance	17
8.1	Contractor Certifications	17
	<i>Owner’s Certification and Delegation</i>	<i>18</i>
	<i>Contractor’s Certification and Delegation</i>	<i>19</i>
	<i>Sub-Contractor Certification</i>	<i>20</i>
	<i>Professional Engineer’s Certification</i>	<i>21</i>
9.0	Project Completion	22

Appendix A - Land Disturbance Permit

Appendix B - Construction Activity Record

Appendix C - Completed Inspection Forms

Appendix D - Erosion Control Plans

Appendix E - Storm Water Pollution Prevention Plan (SWPPP) Modification Form

Appendix F - Project Rainfall Log

1.0 Purpose of Plan

The purpose of this Construction Storm Water Pollution Prevention Plan is to demonstrate compliance with the requirements of the National Pollutant Discharge Elimination System (NPDES) for issuance of a General Permit for storm water discharges associated with construction activity. The General Permit requires the preparation and implementation of such a plan to prevent, as much as practicable, the release of pollutants in storm water runoff from the construction site to waters of the United States.

This Plan provides information about the Smalls Sliders project located in Lee's Summit, Missouri. Administrative requirements and potential storm water and non-storm water pollutant sources are identified. Best management practices to prevent the discharge of non-storm water materials in storm water runoff are also described.

The Smalls Sliders project is located at 1050 SW Jefferson Street, Lee's Summit, Jackson County, Missouri, and is comprised of approximately 0.88 acres of land. The project will disturb approximately 0.88 acres of land. The site is currently vacant ground covered in asphalt. To the north and east of the site are US Highway 50 and US Highway 291, respectively. To the south is Abundant Life Church, while the west borders a residential neighborhood and Pleasant Lea Park. The site can be described as sloping to the west and south. A project location map follows as Figure 1.



Figure 1: Vicinity Map, NOT TO SCALE

2.0 Site Evaluation

The following sections describe existing conditions at the site.

2.1 Topography and Drainage

The existing topography of the property slopes down to the west from 1 to 4 percent slope. The majority of the drainage is directed to the existing public storm sewer system to the south. Elevations range from approximately 1027 feet in the center of the site to approximately 1024 in the southwest corner.

2.2 Soils

The soils on the project site were identified according to soil boring information gathered to prepare a geotechnical report. The following soil conditions were encountered on the Project Site:

- Arisburg-Urban Land Complex, Hydrologic Soils Group (HSG): Type C
- Udarents-Urban Land Complex, Hydrologic Soils Group (HSG): Type C

2.3 Runoff Water Quality

No surface water quality data is available for the project site. However, due to the nature of the site, runoff could be expected to contain some suspended solids.

2.4 Receiving Waters

Pre-developed project site runoff flows through an existing earthen detention basin on the southwest corner of the site. The existing basin has open and enclosed sewer systems active. Runoff drains to the uppermost part of Cedar Creek. The existing onsite basin and respective sewer systems will continue to serve as detention for the post-developed project site.

3.0 Site Construction Plan

The following sections describe the proposed development and site construction plan.

3.1 Construction Activities

The project site will be developed into Smalls Sliders restaurant. The project site will require earthwork to support the planned development. Soil disturbing activities will include clearing, grubbing, rough grading, filling, and final grading. The project will have construction access from the east via the existing street. The project construction entrance will be constructed as a stabilized construction entrance to reduce tracking of soil onto the surrounding roadways.

A record of the project site construction activities must be maintained as part of this Plan. Appendix B includes a form and instructions to record such information on an ongoing basis.

3.2 Construction Sequence

Follow the Erosion Control Plan Drawings for placement and sequence of BMPs. The project will be constructed generally following the sequence indicated below.

- Implement Pre-Construction Erosion Control Plan. The following are included:
 - Install construction vehicle entry.
 - Mark areas to remain undisturbed.
 - Install downhill perimeter sediment control.
- Perform clearing, grading, and site preparation. The following are included:
 - Follow demolition plan.
 - Grade site.
- Install other BMPs and erosion control devices when required throughout the duration of the project.
- Construct utilities, building, and paving.
 - A concrete washout pit shall be installed at the beginning of this stage.
- Complete implementation of Erosion Control Plan as construction is completed.
- Remove final BMPs once site is stabilized.

4.0 Storm Water Management Plan

This storm water management plan was designed following EPA guidelines. Structural sediment control devices will be the main means of storm water management. Storm water sediment controls will be installed before any construction begins.

4.1 General Description of Storm Water Management System

The potential for storm water runoff pollution will be present during construction of the Smalls Sliders building site. This risk will be minimized through the use of several control measures implemented before and during the construction sequence.

The storm water management system was designed in accordance with the EPA's guidance document entitled Storm Water Management for Construction Activities – Developing Pollution Prevention Plans And Best Management Practices (EPA 832-R-92-005, September 1992). Structural measures are the main means of storm water management. Storm water control measures are described and shown on the Erosion Control Plan Drawings.

Embankment slopes will be constructed at a maximum slope of 3' horizontal to 1' vertical. Construction activities will be restricted to within 10' outside of the farthest toe of slope or disturbed area.

It will be the responsibility of the Construction Manager to revise the Erosion Control Plan Drawings if the location or types of control measures are changed in the field.

4.2 Runoff Coefficient

In determining the curve number for the project site, the SCS method was used. This method is based on land use, soil type, and the percentage of impervious areas in the existing and proposed conditions. For this hydrology study, a curve number of 88 was used.

4.3 Project Site

The surface water management during construction will be through the use of gravel bags, silt fences, and soil stabilization measures. Storm water will be conveyed by overland surface flow to gravel bags and silt fences to remove suspended solids before leaving the site.

4.3.1 *Stabilization Practices*

Temporary and permanent stabilization methods will be used on the project site. Two major stabilization methods that will be used on the site are preserving existing vegetation where possible and disturbing only the area needed for project construction. Disturbed portions of the site will be stabilized within 7 days after construction activity has temporarily or permanently ceased, with two exceptions – when snow cover precludes construction or when construction will resume within 14 days. Stabilization practices may include temporary or permanent seeding, mulching, geotextiles, sodding, or aggregate surfacing. Site access facilities (entrances/exits and parking areas) will be surfaced with aggregate as necessary to reduce sediment tracking.

4.3.2 *Structural Practices*

Temporary structural devices to divert, store, or limit runoff from disturbed areas will be used on the project site. Such devices will include gravel bags and silt fences. Details of the structural control measures are shown on the Erosion Control Plan Drawings.

5.0 Potential Storm Water Pollutant Sources and Control Measures

Pollutants from various sources have the potential to enter the storm water system during project construction. A description of these potential pollutants and control measures to reduce the risk of storm water contamination is provided below.

5.1 Construction Silt and Dust

Pre-developed project site runoff flows through an existing earthen detention basin on the southwest corner of the site. The existing basin has open and enclosed sewer systems active. Runoff drains to the uppermost part of Cedar Creek. The existing onsite basin and respective sewer systems will continue to serve as detention for the post-developed project site. Construction of the project will generate silt and fugitive dust.

Silt barriers (fences and gravel bags) will be installed perpendicular to the storm runoff on all disturbed slopes as shown on the Erosion Control Plan Drawings to control offsite discharges of silt. The silt barrier will be installed after the clearing and grubbing necessary for placement of the silt barrier is complete, but before the clearing and grubbing of the remaining work area is started. The silt barrier will remain in place until the up-slope surface is permanently stabilized. If construction in a particular area will cease temporarily, temporary soil stabilization will be implemented no more than 7 days after the construction has ceased unless activity will resume in that area within 14 days. Permanent stabilization will take place no later than 7 days after construction activities have permanently ceased in an area.

Fugitive dust may be generated during dry weather conditions. Dust control will be directed by the Construction Manager. Water sprays will be used for dust control.

5.2 Offsite Sediment Tracking

Adjacent SW Jefferson Crossing and US Highway 291 will be kept relatively free of excess mud, dirt, and rock tracked from the project site. The site access drive will be constructed with a stabilized construction entrance to reduce tracking of sediment offsite.

5.3 Petroleum Products

Construction equipment will require diesel fuel and oil on a regular basis so the potential exists for spills or leaks. All onsite vehicles will be monitored for leaks and receive regular preventative maintenance to ensure proper operation and reduce the chance of leaks. No “topping off” of fuel tanks will be allowed to reduce the possibility of spills.

Petroleum products will be stored in clearly labeled and tightly sealed containers or tanks. Any asphalt used onsite will be applied according to the manufacturer’s recommendations. Any soil contaminated by fuel or oil spills will be removed and disposed of at an approved disposal site by the Contractor.

5.4 Sanitary Wastes

A licensed sanitary waste management contractor will collect all construction or temporary sanitary wastes from portable units. The units will be maintained on a regular basis.

5.5 Hazardous Wastes

All hazardous waste materials will be disposed of according to local or state regulation or the manufacturer's recommendations. The Construction Manager who will also be responsible for their implementation will instruct site personnel of these regulations and recommendations.

5.6 Fertilizers

Fertilizers will be applied as recommended by the manufacturer. After application the fertilizer will be worked into the soil to limit exposure to storm waters. Fertilizers will be stored in a covered area or in watertight containers. Any partially used bags or containers will be properly sealed and stored to avoid spills or leaks.

5.7 Paints

All paint containers will be tightly sealed and properly stored to prevent leaks or spills. Paint will not be discharged to the storm water system. Unused paints will be disposed of according to local and/or state regulations. Spray painting will not occur on windy days and a drop cloth will be used to collect and dispose of drips and overspray associated with all painting activities.

5.8 Concrete Trucks

Concrete trucks will be allowed to discharge surplus concrete or drum wash water on the site in accordance with the plans in such a manner that prevents contact with storm waters discharging from the site. Dikes or barriers will be constructed around such an area to contain these materials until stable, at which time the materials will be disposed of in a manner acceptable to the Construction Manager.

5.9 Waste Materials

All construction waste material will be collected, deposited, and stored in metal dumpsters from a licensed solid waste management contractor. No construction waste materials will be buried onsite. Any burning will be conducted in accordance with local or state regulations. It is the responsibility of the Construction Manager to obtain any and all permissions and permits for burning if so locally allowed. All site personnel will be instructed of the proper waste disposal procedures by the Construction Manager.

5.10 Allowable Non-Storm Water Discharges

The following sources of non-storm water discharges from project construction activities may be combined with storm water discharges.

- Waters used to wash vehicles or to control dust
- Pavement wash waters not containing toxic or hazardous substances
- Uncontaminated dewatering discharges
- Firefighting waters
- Vegetation watering
- Potable or spring water discharges

6.0 Best Management Practices

Chemicals, petroleum products, and other materials will be used and stored on the project site. Best Management Practices, such as good housekeeping measures, inspections, containment, and spill prevention practices will be used to limit contact between storm water and potential pollutants.

6.1 Good Housekeeping

The good housekeeping practices listed below will be followed to reduce the risk of potential pollutants entering storm water discharges. All construction personnel will be responsible for monitoring and maintaining housekeeping tasks or notifying the appropriate person of a problem.

- Store only enough product to do the job.
- Store all materials in a neat and orderly manner, in the appropriate containers and, if possible, under a roof or within an enclosure.
- Keep products in the original container with the original manufacturer's label.
- Do not mix products unless recommended by the manufacturer.
- Use all of a product before disposing of the container.
- Use and dispose of products according to the manufacturer's recommendations or the Construction Manager's direction.
- Perform regular inspections of the storm water system and the material storage areas.
- When and where appropriate, use posters, bulletin boards, or meetings to remind and inform construction personnel of required procedures.

6.2 Hazardous Materials

Storage areas for hazardous materials such as oils, greases, paints, fuels, and chemicals, must be provided with secondary containment to ensure that spills in these areas do not reach waters of the State. Contingencies for the proper disposal of contaminated soils shall be established (use of licensed hauler and approved landfill, for example) early in the construction period.

6.3 Spill Prevention and Response

In addition to the good housekeeping and hazardous materials storage procedures described above, spill prevention and cleanup practices will be as follows.

- Construction personnel will be informed of the manufacturer's recommended spill cleanup methods and the location of that information and cleanup supplies.
- Materials and equipment for the cleanup of a relatively small spill will be kept in the materials storage area. These facilities may include brooms, rags, gloves, shovels, goggles, sand, sawdust, plastic or metal trash containers, and protective clothing.
- All containers will be labeled, tightly sealed, and stacked or stored neatly and securely.

The spill response procedure will be as follows:

- Step 1. Upon discovery of a spill, stop the source of the spill.
- Step 2. Cease all spill material transfer until the release is stopped and waste removed from the spill site.
- Step 3. Initiate containment to prevent spill from reaching State waters.
- Step 4. Notify a Supervisor or the Construction Manager of the spill.
- Step 5. The Construction Manager will coordinate further cleanup activities.
- Step 6. Any significant spill of hazardous material will be reported to the appropriate state and or local agencies at the following numbers:

National Response Center	1-800-424-8802
State Contacts:	
MDNR	1-800-361-4827

Local Contacts:	
Police	911

- Step 7. Review the construction storm water pollution prevention plan and amend if needed. Record a description of the spill, cause, and cleanup measures taken.

7.0 Inspection, Maintenance, and Reporting Procedures

Site inspection and facility maintenance are important features of an effective storm water management system. Qualified personnel will inspect disturbed areas of the site not finally stabilized; storage areas exposed to precipitation, all control measures, and site access areas to determine if the control measures and storm water management system are effective in preventing significant impacts to receiving waters.

7.1 Erosion and Sediment Controls

The following procedures will be used to maintain erosion and sedimentation controls.

- All control measures will be inspected at least once a week and after each rainfall event producing runoff and daily during prolonged rainfall periods.
- All measures will be maintained in good working order. If a repair is necessary, it will be made within 24 hours of the inspection.
- Sediment will be removed from the silt barriers when it has reached one-third of the height of the barrier.
- Silt barriers will be inspected for depth of accumulated sediment, tears, attachment to posts, and stability on a weekly basis.
- Temporary and permanent seeding and planting will be inspected for bare spots, washouts, and healthy growth.
- The Construction Manager will select individuals to be responsible for inspections, maintenance, repairs, and reporting. The designated individuals will receive the necessary training from the Construction Manager to properly inspect and maintain the controls in good working order.
- Inspection Form 1 will be completed after each inspection.
- The completed Inspection Forms will be kept with this Plan in Appendix B.

7.2 Non-Storm Water Controls

The following procedures will be used to maintain the non-storm water controls.

- All control measures will be inspected at least once a week and after each runoff producing rainfall event and daily during prolonged rainfall periods.
- All measures will be maintained in good working order. If a repair is necessary, it will be initiated within 24 hours of the inspection.
- The Construction Manager will select individuals to be responsible for inspections, maintenance, repairs, and reporting. The designated individuals will receive the necessary training from the Construction Manager to properly inspect and maintain the controls in good working order.
- Inspection Form 2 will be completed after each inspection.
- The completed Inspection Forms will be kept with this Plan in Appendix C.

7.3 Reporting

Two inspection forms are provided on the following pages for recording inspections and maintenance of the control measures: Erosion and Sedimentation Controls (Inspection Form 1), and Non-Storm Water Source Controls (Inspection Form 2). All disturbed areas and materials storage areas require inspection at least every 7 days and within 24 hours of a ½ inch or more rainfall. After each inspection, the inspector completes an inspection report and inserts that report in Appendix B of this Plan. Any required maintenance is initiated within 24 hours of the inspection.

A fully signed copy of this Plan and any supporting materials must be maintained at the project site from the date of project initiation to the date of final stabilization. All records and supporting documents will be compiled in an orderly manner and maintained for a period of three years following final stabilization.

The generation of reports, as part of the construction process and inspection or amendment procedures, provides accurate records that can be used to evaluate the effectiveness of this Plan and document the plans compliance. Changes in design or construction of the storm water management system are documented and included with the Plan to facilitate Plan review or evaluation. Four forms have been developed to assist the Construction Manager with record keeping activities.

- Record of Plan Amendments Form 3
- Construction Activity Record
- Erosion and Sedimentation Controls Inspection Form 1
- Non-Storm Water Source Controls Inspection Form 2

Plan amendments will be documented on the form in the front of this Plan and on the drawings. A record of construction activities will be maintained in Appendix B of this Plan. Completed inspection and maintenance forms will be kept in Appendix C of this Plan.

Inspection Form 1 - Erosion and Sedimentation Controls

Visually inspect disturbed areas of the construction site that have not been finally stabilized. Inspections to be completed every 7 days and within 24 hours of a rainfall event of ½ inch or more. Maintenance to be performed within 24 hours of inspection.

Inspector: _____

Inspection Date: _____

Date of last rainfall: _____

Amount of last rainfall: _____ inches

Report on the condition of the erosion and sedimentation controls installed at the construction site. Check for tears in silt barriers, for securely attached fabric to fence posts, and for depth of sediment in front of the silt barriers. The depth of sediment should not exceed one-third of the barrier height. Seeding/planting areas and rip/rap aggregate areas should be inspected for bare spots and washouts.

Area	Condition of Control	Maintenance Required/Completion Date

Inspection Form 2 – Non-Storm Water Source Controls

Visually inspect material storage and construction areas. Inspections to be completed every 7 days and within 24 hours of a rainfall event of ½ inch or more. Maintenance to be performed within 24 hours of inspection.

Inspector: _____

Inspection Date: _____

Date of last rainfall: _____

Amount of last rainfall: _____ inches

Construction Dust – Is there excessive dust at the site that requires watering?

Sediment Tracking – Is adjacent SW Jefferson Crossing and US Highway 291 mostly free from mud, dirt, or rock?

Is washdown required? _____

Are graveled areas adequately covered? _____

Petroleum/Chemical Products – Are spill containment structures secure? Product containers securely sealed? _____

Sanitary Waste – Do portable sanitary units need service? _____

Hazardous Waste – Are hazardous wastes stored and disposed of in compliance with state and local regulations? _____

Inspection Form 2 – Non-Storm Water Source Controls (Continued)

Construction Waste – Are all construction waste materials collected and stored in approved dumpsters? _____

Material Storage Areas Exposed to Precipitation – Are materials handled and stored in a manner to prevent leakage and prevent pollutants from entering the storm water system?

Other Non-Storm Water Discharges – Are waters from line flushing, pavement washdown, and dewatering directed to the storm water system prior to discharge?

Maintenance Required	Maintenance Completed Date
_____	_____
_____	_____
_____	_____
_____	_____
_____	_____
_____	_____
_____	_____
_____	_____
_____	_____
_____	_____
_____	_____

Inspection Form 3 – Record of Plan Amendments

Smalls Sliders

Storm Water Pollution Prevention Plan

INSPECTION AND MAINTENANCE REPORT FORM

CHANGES REQUIRED TO THE POLLUTION PREVENTION PLAN:

REASONS FOR CHANGES:

I certify under penalty of law that this document and all attachments were prepared under my direction or supervision in accordance with a system designed to assure that qualified personnel properly gathered and evaluated the information submitted. Based on my inquiry of the person or persons who manage the system, or those persons directly responsible for the gathering of information, the information submitted is, to the best of my knowledge and belief, true, accurate, and complete. I am aware that there are significant penalties for submitting false information, including the possibility of fine and imprisonment for knowing violations.

SIGNATURE: _____ DATE: _____

8.0 Certification of Compliance

This Construction Storm Water Pollution Prevention Plan reflects best management practices and erosion and sedimentation control measures for storm water management as recommended by the Environmental Protection Agency.

8.1 Contractor Certifications

The Contractor Certification forms provided in this section and in the beginning of this report indicate that each contractor or subcontractor working on the project site understands the terms, conditions, and intent of the NPDES General Permit for Construction Storm Water Discharges Associated with Construction Activity and will implement the measures described in this Plan appropriate to his area of work.

All contractors and subcontractors must complete the two separate forms. If additional sheets are needed due to more subcontractors on site than sheets provided herein, additional sheets may be copied and inserted into booklet at the job site.

STORM WATER POLLUTION PREVENTION PLAN

SMALLS SLIDERS LEE'S SUMMIT, JACKSON COUNTY, MISSOURI

Owner's Certification and Delegation

I certify under penalty of law, that this document and all attachments were prepared under my direction or supervision in accordance with a system designed to assure that qualified personnel properly gathered and evaluated the information submitted. Based on my inquiry of the person or persons who manage the system, or those persons directly responsible for gathering the information submitted is, to the best of my knowledge and belief, true, accurate, and complete. I am aware that there are significant penalties for submitting false information, including the possibility of fine and imprisonment for known violations.

Project Owner: _____

Authorized Representative: _____

Title: _____

Address: _____

Signature, Date: _____

As Project Owner, I have delegated the following individual to monitor Storm Water Prevention Plan (SWPPP) compliance:

Owner Representative: _____

Title: _____

Signature, Date: _____

Phone: _____

STORM WATER POLLUTION PREVENTION PLAN

SMALLS SLIDERS LEE'S SUMMIT, JACKSON COUNTY, MISSOURI

Contractor's Certification and Delegation

I certify under penalty of law, that I understand the terms and conditions of the National Pollutant Discharge Elimination System (NPDES) Construction General Permit (CGP) that authorizes the storm water discharges associated with industrial activity from the construction site identified as part of this Certification. I understand that I am legally required under the Clean Water Act, to ensure compliance with the terms and conditions of NPDES storm water CGP and this Storm Water Pollution Prevention Plan (SWPPP).

I understand that I am fully responsible for all subcontractors who perform work activities on the construction site, to comply with all provisions and requirements of the NPDES storm water CGP and this SWPPP.

Contractor:_____

Authorized Representative:_____

Title:_____

Address:_____

Signature, Date:_____

As Contractor, I have delegated SWPPP compliance and inspection responsibilities to the following individual for the duration of construction activities for which this company is under contract with this project.

Contractor SWPPP Representative:_____

Title:_____

Signature, Date:_____

Phone:_____

STORM WATER POLLUTION PREVENTION PLAN

SMALLS SLIDERS

LEE'S SUMMIT, JACKSON COUNTY, MISSOURI

Sub-Contractor Certification

I certify under penalty of law, that I understand the terms and conditions of the National Pollutant Discharge Elimination System (NPDES) Construction General Permit (CGP) that authorizes the storm water discharges associated with industrial activity from the construction site identified as part of this Certification. I understand that I am legally required under the Clean Water Act, to ensure compliance with the terms and conditions of NPDES storm water CGP and this Storm Water Pollution Prevention Plan (SWPPP).

Contractor: _____

Sub-Contractor: _____

Authorized Representative: _____

Title: _____

Signature, Date: _____

Phone: _____

Sub-Contractor: _____

Authorized Representative: _____

Title: _____

Signature, Date: _____

Phone: _____

Sub-Contractor: _____

Authorized Representative: _____

Title: _____

Signature, Date: _____

Phone: _____

STORM WATER POLLUTION PREVENTION PLAN
SMALLS SLIDERS
LEE'S SUMMIT, JACKSON COUNTY, MISSOURI

Professional Engineer's Certification

I certify this Storm Water Pollution Prevention Plan (SWPPP) has been prepared in accordance with good engineering practice and the Clean Water Act.

Company: _____ Kaw Valley Engineering, Inc. _____

Professional Engineer: _____

Address: _____ 2319 N. Jackson Junction City, KS 66441 _____

Phone: _____ 785-762-5040 _____

P.E. Seal

9.0 Project Completion

Construction is considered complete when the project site is 90 percent (density) stabilized. The Construction Manager may terminate construction erosion and sediment control measures at this time. A request for termination of the Land Disturbance operating permit should be submitted to the Missouri Department of Natural Resources.

Appendix A
Land Disturbance Permit

Smalls Sliders - Lee's Summit
MORA29167, Jackson County
Paxvesta LLC
7280 NW 87th Terrace
Suite C210
Kansas City, MO 64153

Pursuant to the Federal Water Pollution Control Act, under the authority granted to the State of Missouri and in compliance with the Missouri Clean Water Law, the Missouri Department of Natural Resources (Department) has issued, and we are enclosing your Missouri State Operating Permit which authorizes land disturbance activities for Smalls Sliders - Lee's Summit.

This General Permit is both your federal discharge permit and your new state operating permit and replaces all previous state operating permits and letters of approval for the discharges described within. In all future correspondence regarding this permit, please refer to your general permit number as shown on page one of your permit.

Please note that prior to the beginning of land disturbance activities other permits may also be required. Especially note the requirements for a Department 401 Water Quality Certification and the U.S. Army Corps of Engineers 404 permit. A 401 Certification is needed when placing material, or fill, into the jurisdictional waters of the United States. Examples are culverts under road crossings, riprap along stream banks and storm water outfall pipes. The term jurisdictional waters refers to large lakes, rivers, streams and wetlands, including those that don't always contain water.

This permit may include requirements with which you may not be familiar. If you would like the Missouri Department of Natural Resources (Department) to conduct a Compliance Assistance Visit to discuss the permit, an appointment can be set up by contacting your local Department Regional Office or the Water Pollution Program at 573-751-1300.

The permit requires the development and implementation of a Stormwater Pollution Prevention Plan (SWPPP). Refer to your permit for more information on this SWPPP.

The requirements found in this permit do not supersede nor relieve liability for compliance with other federal, state, county, or local statutes, regulations, or ordinances. Also, any exemptions found in this permit do not imply an exemption from other permits from the Department. It is your responsibility to ensure that any and all necessary permits for this facility have been obtained.

If you were adversely affected by this decision, you may be entitled to an appeal before the Administrative Hearing Commission (AHC) pursuant to Sections 644.051.6 and 621.250, RSMo. To appeal, you must file a petition with the AHC within thirty days after the date this decision was mailed or the date it was delivered, whichever date was earlier. If any such petition is sent by registered mail or certified mail, it will be deemed filed on the date it is mailed; if it is sent by any method other than registered mail or certified mail, it will be deemed filed on the date it is received by the AHC. Contact information for the AHC is as follows: Administrative Hearing Commission, United States Post Office Bldg., Third Floor, 131 West High Street, Jefferson City, MO 65101, and PO Box 1557, Jefferson City, MO 65102. phone: 573 751 2422, fax: 573 751 5018, website: www.oa.mo.gov/ahc.

If you have any questions concerning this permit, please do not hesitate to contact us by mail at Department of Natural Resources, Water Protection Program, P.O. Box 176, Jefferson City, MO 65102-0176, or by phone at 573-522-4502. Thank you.

Sincerely,

Water Protection Program

A handwritten signature in black ink, appearing to read "Heather S. Peters", with a long horizontal flourish extending to the right.

Heather S Peters
Director

HSP

Smalls Sliders - Lee's Summit
MORA29167

ePermitting Certification and Signature Document

Missouri State Operating General Permit number MORA29167 was issued on 11-18-2025 based on information entered into the Missouri Department of Natural Resources' electronic Permitting (ePermitting) system. Missouri Regulation 10 CSR 20-6.010(2)(B) requires that all applications for construction and operating permits be signed.

Smalls Sliders - Lee's Summit, Jackson County
101 SW Oldham Parkway
Lee'S Summit, MO 64081
Total Permitted Area: 0.90 Acres
Total Number of Permitted Features: 1

Based upon the selection you made on the 'New Permit' screen; it was indicated that a single polygon was drawn indicating the entire disturbance area.

Is any part of the area that is being disturbed in a jurisdictional water of the United States? If yes, you must also receive a Clean Water Act, Section 404 Permit for this site from the United States Army Corp of Engineers.
No

Is any section of the area that is being disturbed part of a housing development (subdivision)? If yes, additional regulations may apply depending on the nature of wastewater treatment. Please consult and follow 10 CSR 20-6.030 Disposal of Wastewater in Residential Housing Development regulations if onsite wastewater treatment (septic) systems will be used as the method of wastewater treatment. If you have any questions or concerns about the regulation please contact the Water Pollution Control Branch, Operating Permits Section at 573-522-4502.
No

I understand there may be an established Local Authority Erosion Control Plan in the city or the unincorporated area of the county where land disturbance activities covered under this general permit will occur. (Note - you may want to contact your local authority to determine if there are any requirements).
Agreed

A Stormwater Pollution Prevention Plan (SWPPP) must be developed for this site. This plan must be developed in accordance with requirements and guidelines specified within the general permit for storm water discharges from land disturbance activities. The application will be considered incomplete if the SWPPP has not been developed.
Agreed

The above certifications were made electronically in the ePermitting system by:
Name: Jayce Penner
Date: 11/18/2025

I certify that I am familiar with the information contained in the application, that to the best of my knowledge and belief such information is true, complete and accurate, and being granted this permit, I agree to abide by the Missouri Clean Water Law and all rules, regulations, orders and decisions, and terms of this permit, subject to any legitimate appeal available to an applicant under the Missouri Clean Water Commission.
Agreed

Jayce Penner
Signature

11-18-2025
Date

STATE OF MISSOURI
DEPARTMENT OF NATURAL RESOURCES

MISSOURI CLEAN WATER COMMISSION



MISSOURI STATE OPERATING PERMIT

General Operating Permit

In compliance with the Missouri Clean Water Law, (chapter 644 R.S. Mo as amended, hereinafter, the Law), and the Federal Water Pollution Control Act (Public Law 92-500, 92nd Congress) as amended,

Permit No.: MORA29167

Owner: Paxvesta LLC
Address: 7280 NW 87th Terrace
Suite C210
Kansas City, MO 64153

Continuing Authority: Paxvesta LLC
7280 NW 87th Terrace
Suite C210
Kansas City, MO 64153

Facility Name: Smalls Sliders - Lee's Summit
Facility Address: 101 SW Oldham Parkway
Lee'S Summit, MO 64081

Legal Description: Sec. 07, T 47N, R 31W, Jackson County
UTM Coordinates: 380432.178 / 4306721.119
Receiving Stream: Tributary to Cedar Creek (U)
First Classified Stream - ID#: Presumed Use Streams (C) 303(d) 5065.00
USGS# and Sub Watershed#: 10300101 - 0203

is authorized to discharge from the facility described herein, in accordance with the effluent limitations and monitoring requirements as set forth herein.

FACILITY DESCRIPTION

All Outfalls - Construction or land disturbance activity (e.g., clearing, grubbing, excavating, grading, filling and other activities that result in the destruction of the root zone and/or land disturbance activity that is reasonably certain to cause pollution to waters of the state).

This permit authorizes activities pursuant to the terms and conditions of this permit in accordance with the Missouri Clean Water Law and/or the National Pollutant Discharge Elimination System; it does not apply to other regulated activities.

11-18-2025

Issue date

02/07/2027

Expiration date

Heather S Peters, Director, Water Protection Program

I. APPLICABILITY

A. Permit Coverage and Authorized Discharges

1. This Missouri State Operating Permit (permit) authorizes the discharge of stormwater and certain non-stormwater discharges from land disturbance sites that disturb one or more acres, or disturb less than one acre when part of a larger common plan of development or sale that will disturb a cumulative total of one or more acres over the life of the project. A permit must be issued before any disturbance of root zone of the existing vegetation or other land disturbance activities may begin.
2. If an individual or developer proposes to improve a lot for development or sale that is less than an acre and part of a common plan of development or sale, a permit is required. If an individual proposes to develop a lot to reside on themselves, the development is not considered part of the larger common plan of development or sale and does not require a permit unless the lot is an acre or more [10 CSR 20-6.200 (1)(B)6.]. See table below.

Permit Requirements for a Common Promotional Plan

	Land Disturbance Permit Required?	
	Less than one acre (< 1 acre)	One acre or more (≥ 1 acre)
Land disturbance by a developer (or a contractor working on their behalf), regardless of type of development (initial, commercial, residential)	Yes, if part of a larger common plan of development or sale with cumulative disturbance of one or more acres including individual residential lots in order to improve the lot for sale	Yes
Land disturbance by an individual to reside on themselves (or a contractor working on their behalf)	No	Yes

This general permit also authorizes the discharge of stormwater and certain non-stormwater discharges from smaller projects where the Missouri Department of Natural Resources (Department) has exercised its discretion to require a permit [10 CSR 20-6.200 (1)(B)].

A Missouri State Operating Permit (MORA, MOR100, or site specific) that specifically identifies the project must be issued before any site vegetation is removed (disturbance of the root zone) or the site disturbed [10 CSR 20-6.200 (1)(A)].

Any persons who operate, use, or maintain a land disturbance activity (owner/operator) which is subject to permitting requirements for stormwater discharges from land disturbance activities, who disturbs land prior to permit issuance from the Department is in violation of both State [10 CSR 20-6.200 (1)(A)] and Federal regulations.

The owner/operator and continuing authority of this permit are responsible for compliance with this permit [10 CSR 20-6.200 (3)(B)].

The primary operator(s) of a land disturbance site is any party associated with the project who either: 1) has operational control over construction plans, including the ability to make modifications to those plans; or 2) has day-to-day operational control of those activities at a project that are necessary to ensure compliance with the permit conditions. This may be the General Contractor, Project Manager, or similar role.

3. This permit authorizes stormwater discharges from land disturbance support activities (e.g., equipment staging yards, material storage areas, excavated material disposal areas, borrow areas, concrete, or asphalt batch plants) provided appropriate stormwater controls are designed, installed, and maintained and the following conditions are met and addressed in the Stormwater Pollution Prevention Plan (SWPPP):
 - (a) The support activity is directly related to the construction site required to have permit coverage for stormwater discharges;
 - (b) The support activity is not a commercial operation or serve multiple unrelated construction sites;
 - (c) The support activity does not continue to operate beyond the completion of the construction activity at the project it supports;
 - (d) Sediment and erosion controls are implemented in accordance with the conditions of this permit; and
 - (e) The support activity is strictly stormwater discharges. Support activities which discharge process water shall apply for separate coverage, such as a concrete batch plant discharging process water shall be covered under a MOG49.

The permittee is responsible for compliance with this permit for any construction support activity.

4. This permit authorizes non-stormwater discharges from the following activities provided that these discharges are treated by appropriate Best Management Practices (BMPs) where applicable and addressed in the permittee's specific SWPPP required by this general permit:
 - (a) Discharges from emergency fire-fighting activities;
 - (b) De-chlorinated fire hydrant flushing;
 - (c) Uncontaminated water line flushing;
 - (d) Uncontaminated condensate from air conditioning or compressor condensate;
 - (e) Landscape watering;
 - (f) Uncontaminated, non-turbid discharges of ground water or spring water;
 - (g) Foundation or footing drains where flows are not contaminated with process materials;
 - (h) Water used to control dust; and
 - (i) Pavement wash waters, provided spills or leaks of toxic or hazardous substances have not occurred (unless all spill material has been removed) and where soaps, solvents, and detergents are not used. Directing pavement wash waters directly into any water of the state, storm inlet, or stormwater conveyance, unless the conveyance is connected to an effective control, is prohibited.
5. Sites that have contaminated soils that will be disturbed by the land disturbance activity, or where such materials are brought to the site to use as fill or borrow, shall notify the Department's Water Protection Program for approval before applying for coverage under this permit. The Department reserves the right to revoke or deny coverage under this general permit; a site-specific permit may be required to cover such activities.

B. Permit Restrictions

1. Any non-stormwater discharges other than those explicitly authorized in Part I APPLICABILITY, Condition A.3 are prohibited under this permit.
2. This permit does not authorize the discharge of process wastewaters, treated or otherwise, including water used to wash machinery, equipment, buildings, or wastewater from washout of concrete.
3. For sites operating within the watershed of any Outstanding National Resource Water (which includes the Ozark National Riverways and the National Wild and Scenic Rivers System), sites that discharge to an Outstanding State Resource Water, or facilities located within the watershed of an impaired water as designated in the 305(b) report, including the 303(d) list, with an impairment for sediment:
 - (a) This permit authorizes stormwater discharge so long as no degradation of water quality occurs due to discharges from the permitted facility per 10 CSR 20-7.031(3)(C) and as long as the facility is 1,000 or more feet away from the Outstanding National or State Resource Water or a water of the state with an impairment for sediment.
 - (b) A site with a discharge found to be causing degradation or contributing to an impairment by discharging a pollutant of concern, during an inspection or through complaint investigations, may be required to become a no discharge facility or obtain a site-specific permit with more stringent monitoring and SWPPP requirements.
 - (c) For sites within 1,000 feet of Outstanding National or State Resource Water or a water of the state with an impairment for sediment, the site shall operate as a no-discharge facility as defined in 10 CSR 20-6.015(1)(B)7, and discharges from dewatering of sedimentation basins is prohibited.
4. This general permit does not authorize the placement of fill materials in flood plains, placement of fill into any floodway, the obstruction of stream flow, or changing the channel of a defined drainage course. This general permit addresses only the quality of the stormwater runoff and the minimization of off-site migration of sediments and other water contaminants.
5. This permit does not allow stream channel or wetland alterations unless approved by Section 404 of the federal Clean Water Act (CWA) permitting authorities. Land disturbance activities may not begin in waters of the United States until any required Section 404 permit and Section 401 certification have been obtained.
6. This operating permit does not affect, remove, or replace any requirement of the National Environmental Policy Act; the Endangered Species Act; the National Historic Preservation Act; the Comprehensive Environmental Response, Compensation and Liability Act; the Resource Conservation and Recovery Act; or any other relevant acts. Determination of applicability to the above mentioned acts is the responsibility of the permittee. Additionally, this permit does not establish terms and conditions for runoff resulting from silvicultural activities listed in Section 402(1)(3)(a) of the Clean Water Act.
7. Compliance with all requirements in this permit does not supersede any requirement for obtaining project approval from an established local authority nor remove liability for compliance with county and other local ordinances.

8. The Department may require any facility or site authorized by a general permit to apply for a site-specific permit [10 CSR 20-6.010(13)(C)]. Cases where a site-specific permit may be required include, but are not limited to, the following:
 - (a) The discharge(s) is a significant contributor of a pollutant(s) which impairs the designated uses or general criteria of the receiving stream;
 - (b) The discharger is not in compliance with the conditions of the general permit;
 - (c) A Total Maximum Daily Load (TMDL) containing requirements applicable to the discharge(s) is approved; or
 - (d) Materials or contaminants exist at the site, or are brought to the site to use as fill or borrow, which may necessitate special controls or permit limits not otherwise considered under this general permit, such as contaminated soils from federal clean-up sites. This general permit may be authorized when additional contaminant controls are proposed by the applicant and the proposal is accepted by the Department in written correspondence.
9. If a facility or site covered under a current general permit desires to apply for a site-specific permit, the facility or site may do so by contacting the Department for application requirements and procedures.
10. Any discharges not expressly authorized in this permit and not clearly disclosed in the permit application cannot become authorized or shielded from liability under CWA section 402(k) or Section 644.051.16, RSMo, by disclosure to EPA, state, or local authorities after issuance of this permit via any means, including any other permit applications, funding applications, the SWPPP, discharge monitoring reporting, or during an inspection. Discharges at the facility not expressly authorized by this permit must be covered by another permit, be exempt from permitting, or be authorized through some other method.
11. In the event that a State of Emergency is declared, either by the State or Federal government, and as a result an emergency-related project requires land disturbance activity that requires a permit, the owner/operator of the project may begin work prior to permit issuance so long as they implement sediment and erosion controls in compliance with the master general permit conditions contained herein. The owner/operator is not exempt from permitting and shall apply for the land disturbance permit as soon as practicable but no later than seven calendar days after starting work. The Department may determine that other emergencies, considered on a case-by-case basis, are applicable. Contact the Department to determine if non-state of emergencies are applicable.

II. EXEMPTIONS FROM PERMIT REQUIREMENTS

1. Facilities that discharge all stormwater runoff directly to a combined sewer system (as defined in 40 CFR 122.26 and 40 CFR 35.2005) connecting to a publicly owned treatment works which has consented to receive such a discharge are exempt from Department stormwater permit requirements.
2. Land disturbance activities that disturb less than one (1) acre of total land area which are not part of a common plan of sale where water quality standards are not exceeded are exempt from Department stormwater permit requirements. Land disturbance activity on an individual residential building lot is not considered as part of the overall subdivision unless the activity is by the developer to improve the lot for sale.
3. Oil and gas related activities as listed in 40 CFR 122.26(a)(2)(ii) where water quality standards are not exceeded are exempt from Department stormwater permit requirements.
4. Linear, strip, or ribbon construction or maintenance operations meeting one (1) of the following criteria are exempt from Department stormwater permit requirements:
 - (a) Grading of existing dirt or gravel roads which does not increase the runoff coefficient and the addition of an impermeable surface over an existing dirt or gravel road;
 - (b) Cleaning or routine maintenance of roadside ditches, sewers, waterlines, pipelines, utility lines, or similar facilities;
 - (c) Trenches two (2) feet in width or less; or
 - (d) Emergency repair or replacement of existing facilities as long as BMPs are employed during the emergency repair.

III. REQUIREMENTS

1. The permittee shall post a public notification sign at the main entrance to the site with the specific MORA permit number. The public notification sign must be visible from the public road that provides access to the site's main entrance. An alternate location is acceptable provided the public can see it and it is noted in the SWPPP. The public notification sign must remain posted at the site until the permit has been terminated. The sign is provided at the end of this permit.

2. The permittee shall be responsible for notifying the land owner and each contractor or entity (including utility crews and city employees or their agents) who will perform work at the site of the existence of the SWPPP and what actions or precautions shall be taken while on-site to minimize the potential for erosion and the potential for damaging any BMP. The permittee is responsible for any damage a subcontractor may do to established BMPs and any subsequent water quality violation resulting from the damage.
3. Ensure the design, installation, and maintenance of effective erosion and sediment controls to minimize the discharge of pollutants. At a minimum, such controls must be designed, installed, and maintained to:
 - (a) Control stormwater volume, velocity, and peak flow rates within the site to minimize soil erosion;
 - (b) Control stormwater discharges, including both peak flow rates and total stormwater volume, to minimize erosion at outlets and to minimize downstream channel and stream bank erosion and scour;
 - (c) Minimize the amount of exposed soil during construction activity;
 - (d) Minimize the disturbance of steep slopes;
 - (e) Minimize sediment discharges from the site. Address factors such as:
 - 1) the amount, frequency, intensity, and duration of precipitation;
 - 2) the nature of resulting stormwater runoff;
 - 3) expected flow from impervious surfaces, slopes, and drainage features; and
 - 4) soil characteristics, including the range of soil particle size expected to be present on the site;
 - (f) Provide and maintain natural buffers around surface waters as detailed in Part V. BMP REQUIREMENTS Condition 7, direct stormwater to vegetated areas to increase sediment removal and maximize stormwater infiltration and filtering, unless infeasible;
 - (g) Minimize soil compaction and preserve topsoil where practicable; and
 - (h) Capture or treat a 2-year, 24-hour storm event.
4. A 2-year, 24-hour storm event shall be determined for the project location using the National Oceanic and Atmospheric Administration's National Weather Service Atlas 14 which can be located at https://hdsc.nws.noaa.gov/hdsc/pfds/pfds_map_cont.html.
 - (a) As an alternative to utilizing NOAA Atlas 14 for site specific data to determine the 2-year, 24-hour storm event the conservative default value can be used based on the map provided by the Department in the Factsheet portion of this permit. The permittee may choose which source to use for the site specific data.
5. BMPs for land disturbance [10 CSR 20-6.200(1)(D)2] are a schedule of activities, practices, or procedures that reduces the amount of soil available for transport or a device that reduces the amount of suspended solids in runoff before discharge to waters of the state. The term BMPs are also used to describe the sediment and erosion controls and other activities used to prevent stormwater pollution. BMPs are divided into two main categories: structural or non-structural; and they are also classified as temporary or permanent.
6. Installation of BMPs necessary to prevent soil erosion and sedimentation at the downgradient project boundary (e.g. buffers, perimeter controls, exit point controls, storm drain inlet protection) must be complete prior to the start of all phases of construction. By the time construction activity in any given portion of the site begins, downgradient BMPs must be installed and operational to control discharges from the initial site clearing, grading, excavating, and other earth-disturbing activities. Additional BMPs shall be installed as necessary throughout the life of the project. Following the installation of these initial BMPs, all BMPs needed to control discharges shall be installed and made operational prior to subsequent earth disturbing activities.
7. Temporary BMPs may be added and removed as necessary with updates to the SWPPP as specified in the requirements below.
8. All BMPs shall be maintained and remain in effective operating condition during the entire duration of the project, with repairs made within the timeframes specified elsewhere in this permit, until final stabilization has been achieved.
 - (a) Ensure BMPs are protected from activities that would reduce their effectiveness.
 - (b) Remove any sediment per the BMP manufacturer's instructions or before it has accumulated to one-half of the above-ground height of any BMP that collects sediment (i.e. silt fences, sediment traps, etc.)
 - (c) The project is considered to achieve final stabilization when Part V. BMP REQUIREMENTS, Condition 13 is met.
9. Minimize sediment trackout from the site and sediment transport onto roadways.
 - (a) Restrict vehicle traffic to designated exit points.
 - (b) Use appropriate stabilization techniques or BMPs at all points that exit onto paved roads or areas outside of the site.
 - (c) Use additional controls to remove sediment from vehicle and equipment tires prior to exit from facility where necessary.
 - (d) Any sediment or debris that is tracked out past the exit pad or is deposited on a roadway after a precipitation event shall be removed the shorter of either daily or before a rain event. Remove the track-out sediment by sweeping, shoveling, or vacuuming these surfaces, or by using other similarly effective means of sediment removal. Sediment or debris tracked out

on pavement or other impervious surfaces shall not be disposed of into any stormwater conveyance, storm drain inlet, or water of the state.

- (e) Stormwater inlets susceptible to receiving sediment or other pollutants from the permitted land disturbance site shall have curb inlet protection. This may include inlets off the active area where track out from vehicles and equipment could impact the stormwater runoff to those inlets.
10. Concrete washout facilities shall be used to contain concrete waste from the activities onsite, unless the washout of trucks and equipment is managed properly at an offsite location.
The washout facility shall be managed to prevent solid and/or liquid waste from entering waters of the state by the following:
 - (a) Direct the wash water into leak-proof containers or pits designed so that no overflows can occur due to inadequate sizing or precipitation;
 - (b) Locate washout activities a minimum of 50 feet from waters of the state, stormwater inlets and/or stormwater conveyances;
 - (c) Washout facilities shall be cleaned, or new facilities must be constructed and ready for use, once the washout is 75% full;
 - (d) Designate the washout area(s) and conduct such activities only in these areas.
 - (e) Ensure contractors are aware of the location, such as by marking the area(s) on the map or signage visible to the truck and/or equipment operators.
 11. Good housekeeping practices shall be maintained at all times to keep waste from entering waters of the state.
 - (a) Provide solid and hazardous waste management practices, including providing trash containers, regular site cleanup for proper disposal of solid waste such as scrap building material, product/material shipping waste, food/beverage containers, spent structural BMPs;
 - (b) Provide containers and methods for proper disposal of waste paints, solvents, and cleaning compounds.
 - (c) Manage sanitary waste. Portable toilets shall be positioned so that they are secure and will not be tipped or knocked over and so that they are located away from waters of the state and stormwater inlets and stormwater conveyances.
 - (d) Ensure the storage of construction materials be kept away from drainage courses, stormwater conveyances, storm drain inlets, and low areas.
 12. All fueling facilities present shall at all times adhere to applicable federal and state regulations concerning underground storage, above ground storage, and dispensers.
 13. Any hazardous wastes that are generated onsite shall be managed, stored, and transported according to the provisions of the Missouri Hazardous Waste Laws and Regulations.
 14. Store all paints, solvents, petroleum products, petroleum waste products, and storage containers (such as drums, cans, or cartons) so they are not exposed to stormwater or provide other prescribed BMPs such as plastic lids and/or portable spill pans to prevent the commingling of stormwater with container contents. Commingled water may not be discharged under this permit. Provide spill prevention, control, and countermeasures to contain the spill. Any containment system used to implement this requirement shall be constructed of materials compatible with the substances contained and shall prevent the contamination of groundwater.
 15. Implement measures intended to prevent the spillage or loss of fluids, oil, grease, fuel, etc. from vehicles and equipment to thereby prevent the contamination of stormwater from these substances. This may include prevention measures such as, but not limited to, utilizing drip pans under vehicles and equipment stored outdoors, covering fueling areas, using dry clean-up methods, use of absorbents, and cleaning pavement surfaces to remove oil and grease.
 16. Spills, Overflows, and Other Unauthorized Discharges.
 - (a) Any spill, overflow, or other discharge not specifically authorized in the permit above are unauthorized.
 - (b) Should an unauthorized discharge cause or permit any contaminants to discharge or enter waters of the state, the unauthorized discharge must be reported to the appropriate Regional Office as soon as practicable but no more than 24 hours after the discovery of the discharge. If the spill or overflow needs to be reported after normal business hours or on the weekend, the facility must call the Department's Environmental Emergency Response hotline at (573) 634-2436. Leaving a message on a Department staff member voice-mail does not satisfy this reporting requirement.
 - (c) A record of all spills shall be retained with the SWPPP and made available to the Department upon request.
 - (d) Other spills not reaching waters of the state must be cleaned up as soon as possible to prevent entrainment in stormwater but are not required to be reported to the Department.
 17. The full implementation of this operating permit shall constitute compliance with all applicable federal and state statutes and regulations in accordance with RSMo 644.051.16 and the CWA §402(k); however, this permit may be reopened and modified or alternatively revoked and reissued to comply with any applicable effluent standard or limitation issued or approved under Clean Water Act §§ 301(b)(2)(C) and (D), 304(b)(2), and 307(a)(2) if the effluent standard or limitation so issued or approved contains different conditions or is otherwise more stringent than any effluent limitation in the permit or controls any pollutant not limited

in the permit. This permit may be modified, revoked and reissued, or terminated for cause. The filing of a request by the permittee for a permit modification, termination, notice of planned changes, or anticipated non-compliance does not stay any permit condition.

IV. STORMWATER POLLUTION PREVENTION PLAN (SWPPP) MANAGEMENT REQUIREMENTS

1. The primary requirement of this permit is the development and implementation of a SWPPP which incorporates site specific practices to best minimize the soil exposure, soil erosion, and the discharge of pollutants, including solids.

The purpose of the SWPPP is to ensure the design, implementation, management, and maintenance of BMPs in order to prevent sediment and other pollutants in stormwater discharges associated with the land disturbance activities [40 CFR 122.44 (k)(4)] from entering waters of the state above established general and narrative criteria; compliance with Missouri Water Quality Standards; and compliance with the terms and conditions of this general permit.

- (a) **The SWPPP must be developed and implemented prior to conducting any land disturbance activities and must be specific to the land disturbance activities at the site.**
 - (b) The permittee shall fully implement the provisions of the SWPPP required under this permit as a condition of this general permit throughout the term of the land disturbance project. Failure to develop, implement, and maintain a SWPPP may lead to immediate enforcement action.
 - (c) The SWPPP is a living document and shall be updated any time site conditions warrant adjustments to the project or BMPs.
 - (d) Either an electronic copy or a paper copy of the SWPPP, and any required reports, must be accessible to anyone on-site at all times when land disturbance operations are in process or other operational activities that may affect the maintenance or integrity of the BMP structures and made available as specified under Part VIII. STANDARD PERMIT CONDITIONS, Condition 1 of this permit. The SWPPP shall be readily available upon request and should not be sent to the Department unless specifically requested
2. A SWPPP must be developed, implemented, and maintained at the site or electronically accessible by on-site personnel. Failure to implement and maintain the BMPs chosen, which can be revised and updated, is a permit violation. The chosen BMPs will be the most reasonable and cost effective while also ensuring the highest quality water discharged attainable for the facility. Facilities with established SWPPPs and BMPs shall evaluate BMPs on a regular basis and change the BMPs as needed if there are BMP deficiencies.
3. The SWPPP must:
 - (a) List and describe the location of all outfalls;
 - (b) List any allowable non-stormwater discharges occurring on site and where these discharges occur;
 - (c) Incorporate required practices identified below;
 - (d) Incorporate sediment and erosion control practices specific to site conditions;
 - (e) Discuss whether or not a 404 Permit is required for the project;
 - (f) Discuss whether the discharges are in the watershed of Outstanding National or State Resource Water or in the watershed of a water impaired for sediment.
 - (g) Name the person(s) responsible for inspection, operation, and maintenance of BMPs. The SWPPP shall list the names and describe the role of all owners/primary operators (such as general contractor, project manager) responsible for environmental or sediment and erosion control at the land disturbance site.
4. The SWPPP briefly must describe the nature of the land disturbance activity, including:
 - (a) The function of the project (e.g., low density residential, shopping mall, highway, etc.);
 - (b) The intended sequence and timing of activities that disturb the soils at the site;
 - (c) Estimates of the total area expected to be disturbed by excavation, grading, or other land disturbance support activities including off-site borrow and fill areas;
 - (d) If within the boundaries of a regulated Municipal Separate Storm Sewer System (MS4s), list the name of the regulated MS4.
5. In order to identify the site, the SWPPP shall include site information including size in acres. The SWPPP shall have sufficient information to be of practical use to contractors and site construction workers to guide the installation and maintenance of BMPs.
6. The function of the SWPPP and the BMPs listed therein is to prevent or minimize pollution to waters of the state. A deficiency of a BMP means it was not effective in preventing or minimizing pollution of waters of the state.

The permittee shall select, install, use, operate and maintain appropriate BMPs for the permitted site. The following manuals are acceptable resources for the selection of appropriate BMPs:

Developing Your Stormwater Pollution Prevention Plan: A Guide for Construction Sites, (Document number EPA 833-R-06-004) published by the United States Environmental Protection Agency (USEPA) in May 2007. This manual as well as other

information, including examples of construction SWPPPs, is available at the USEPA internet site at https://www.epa.gov/sites/production/files/2015-10/documents/sw_swppp_guide.pdf; and <https://www.epa.gov/npdes/developing-stormwater-pollution-prevention-plan-swppp>.

The latest version of *Protecting Water Quality: A field guide to erosion, sediment and stormwater best management practices for development sites in Missouri*, published by the Department. This manual is available at: <https://dnr.mo.gov/document-search/protecting-water-quality-field-guide>.

The permittee is not limited to the use of these guidance manuals. Other guidance publications may be used to select appropriate BMPs. However, all BMPs must be described and justified in the SWPPP. Although the use of these manuals or other resources is recommended and may be used for BMP selection, they do not supersede the conditions of this permit. They may be used to inform in the decision making process for BMP selection but they are not themselves part of the permit conditions.

The permittee may retain the SWPPP, inspection reports, and all other associated documents (including a copy of this permit) electronically pursuant to RSMo 432.255. The documents must be made available to all interested persons in either paper or electronic format as required by this permit and the permittee must remit a copy (electronic or otherwise) of the SWPPP and inspection reports to the Department upon request.

7. The SWPPP must contain a legible site map, multiple maps if necessary, identifying:
 - (a) Site boundaries of the property;
 - (b) Locations of all waters of the state (including wetlands) within the site and half a mile downstream of the site's outfalls;
 - (c) Location of all outfalls;
 - (d) Direction(s) of stormwater flow (use arrows) and approximate slopes before and after grading activities;
 - (e) Areas of soil disturbance and areas that will not be disturbed (or a statement that all areas of the site will be disturbed unless otherwise noted);
 - (f) Location of structural and non-structural BMPs, including natural buffer areas, identified in the SWPPP;
 - (g) Locations where stabilization practices are expected to occur;
 - (h) Locations of on-site and off-site material, waste, borrow or equipment storage areas and stockpiles;
 - (i) Designated points where vehicles will exit the site;
 - (j) Location of stormwater inlets and conveyances including ditches, pipes, man-made conduits, and swales; and
 - (k) Areas where final stabilization has been achieved.
8. An individual shall be designated by the permittee as the environmental lead. This environmental lead shall have knowledge in erosion, sediment, and stormwater control principles, knowledge of the permit, and the site's SWPPP. The environmental lead shall ensure all personnel and contractors understand any requirements of this permit may be affected by the work they are doing. The environmental lead or designated inspector(s) knowledgeable in erosion, sediment, and stormwater control principles shall inspect all structures that function to prevent or minimize pollution of waters of the state.
9. Throughout coverage under this permit, the permittee shall amend and update the SWPPP as appropriate during the term of the land disturbance activity. All SWPPP modifications shall be signed and dated. The permittee shall amend the SWPPP to incorporate any significant site condition changes which impact the nature and condition of stormwater discharges. At a minimum, these changes include whenever the:
 - (a) Location, design, operation, or maintenance of BMPs is changed;
 - (b) Design of the construction project is changed that could significantly affect the quality of the stormwater discharges;
 - (c) Permittee's inspections indicate deficiencies in the SWPPP or any BMP;
 - (d) Department notifies the permittee in writing of deficiencies in the SWPPP;
 - (e) SWPPP is determined to be ineffective in minimizing or controlling erosion and sedimentation (e.g., there is visual evidence of excessive site erosion or sediment deposits in streams, lakes, or downstream waterways, sediment or other wastes offsite); and/or
 - (f) Department determines violations of water quality standards may occur or have occurred.
10. Site Inspections: The environmental lead, or a designated inspector, shall conduct regularly scheduled inspections. These inspections shall be conducted by a qualified person, one who is responsible for environmental matters at the site, or a person trained by and directly supervised by the person responsible for environmental matters at the site. Site inspections shall include, at a minimum, the following:
 - (a) For disturbed areas that have not achieved final stabilization, all installed BMPs and other pollution control measures shall be inspected to ensure they are properly installed, appear to be operational, and are working as intended to minimize the discharge of pollutants.
 - (b) For areas on site that have achieved either temporary or final stabilization, while at the same time active construction continues on other areas, ensure that all stabilization measures are properly installed, appear to be operational, and are

- working as intended to minimize the discharge of pollutants.
- (c) Inspect all material, waste, borrow, and equipment storage, and maintenance areas that are covered by this permit. Inspect for conditions that could lead to spills, leaks, or other accumulations of pollutants on the site.
 - (d) Inspect all areas where stormwater typically flows within the site, including drainage ways designed to divert, convey, and/or treat stormwater.
 - (e) All stormwater outfalls shall be inspected for evidence of erosion, sediment deposition, or impacts to the receiving stream. If a discharge is occurring during an inspection, the inspector must observe and document the visual quality of the discharge, and take note of the characteristics of the stormwater discharge, including turbidity, color; odor; floating, settled, or suspended solids; foam; oil sheen; and other indicators of stormwater pollutants.
 - (f) When practicable the receiving stream shall also be inspected for a minimum of 50 feet downstream of the outfall.
 - (g) The perimeter of the site shall be inspected for evidence of BMP failure to ensure concentrated flow does not develop a new outfall.
 - (h) The SWPPP must explain how the environmental lead will be notified when stormwater runoff occurs.
11. Inspection Frequency: All BMPs must be inspected in accordance to one of the schedules listed below. The inspection frequency shall be documented in the SWPPP, and any changes to the frequency of inspections, including switching between the options listed below, must be documented on the inspection form:
- (a) At least once every seven (7) calendar days and within 48 hours after any storm event equal to or greater than a 2-year, 24-hour storm has ceased during a normal work day or within 72 hours if the rain event ceases during a non-work day such as a weekend or holiday; or
 - (b) Once every 14 calendar days and within 24 hours of the occurrence of a storm event of 0.25 inches of precipitation or greater, or the occurrence of runoff from snowmelt. To determine if a storm event of 0.25 inches or greater has occurred on the site, the permittee shall either keep a properly maintained rain gauge on site, or obtain the storm event information from a weather station near the site location.
 - 1) Inspections are only required during the project's normal working hours.
 - 2) An inspection must be conducted within 24 hours of a storm event which has produced 0.25 inches. The inspection shall be conducted within 24 hours of the event end, or within 72 hours if the rain event ceases during a non-work day such as a weekend or holiday.
 - 3) If it is elected to inspect every 14 calendar days and there is a storm event at the site that continues for multiple days, and each day of the storm produces 0.25 inches or more of rain, the permittee shall conduct an inspection within 24 hours of the end of the storm or within 72 hours if the rain event ceases during a non-work day such as a weekend or holiday.
 - (c) For any portion of the site that discharges within the watershed of an Outstanding National or State Resource Water or a water impaired for sediment, inspections shall be inspected once every seven (7) calendar days and within 24 hours of the occurrence of a storm event of 0.25 inches or greater, or when the occurrence of runoff flow from frozen or snowmelt is sufficient to cause a discharge.
 - (d) Areas on-site that have achieved stabilization, while at the same time active construction continues on other areas, may reduce inspection frequency to monthly, for those stabilized areas, if the following conditions exist:
 - 1) For areas where disturbed portions have undergone temporary stabilization, inspections shall occur at least once a month while stabilized and when re-disturbed shall follow either frequency outlined in (a),(b), or (c) above.
 - 2) Areas on-site that have achieved final stabilization must be inspected at least once per month until the permit is terminated.
 - (e) If construction activities are suspended due to frozen conditions, the permittee may temporarily reduce site inspections to monthly until thawing conditions begin to occur if all of the following are met:
 - 1) Land disturbances have been suspended; and
 - 2) All disturbed areas of the site have been stabilized in accordance with Part V. BMP REQUIREMENTS, Condition 13.
 - 3) The change shall be noted in the SWPPP.
 - (f) Any basin dewatering shall be inspected daily when discharge is occurring. The discharge shall be observed and dewatering activities shall be ceased immediately if the receiving stream is being impacted. These inspections shall be noted on a log or on the inspection report.

If weather conditions or other issues prevent correction of BMPs within seven calendar days, the reasons for the delay must be documented (including pictures) and there must be a narrative explaining why the work cannot be accomplished within the seven day time period. The documentation must be filed with the regular inspection reports. The corrections shall be made as soon as weather conditions or other issues allow.

12. Site Inspection Reports: A log of each inspection and/or copy of the inspection report shall be kept readily accessible and must be made available upon request by the Department. Electronic logs are acceptable as long as reports can be provided within 24 hours. If inspection reports are kept off-site, the SWPPP must indicate where they are stored. The inspection report shall be signed by the environmental lead or designated inspector (electronically or otherwise).
- (a) The inspection report is to include the following minimum information:

- 1) Inspector's name and title.
 - 2) Date and time of inspection.
 - 3) Observations relative to the effectiveness of the BMPs and stabilization measures. The following must be documented:
 - a. Whether BMPs are installed, operational, and working as intended;
 - b. Whether any new or modified stormwater controls are needed;
 - c. Facilities examined for conditions that could lead to spill or leak;
 - d. Outfalls examined for visual signs of erosion or sedimentation at outfalls. Excessive erosion or sedimentation may be due to BMP failure or insufficiency. Response to observations should be addressed in the inspection report.
 - 4) Corrective actions taken or necessary to correct the observed problem.
 - 5) Listing of areas where land disturbance operations have permanently or temporarily stopped.
13. Any structural or maintenance deficiencies for BMPs or stabilization measures shall be documented and corrected as soon as possible but no more than seven (7) calendar days after the inspection.
- (a) Corrective action documentation shall be stored with the associated site inspection report.
 - (b) Immediately take all reasonable steps to address the condition, including cleaning up any contaminated surfaces so the material will not discharge in subsequent storm events.
 - (c) If weather conditions or other issues prevent correction of BMPs within seven calendar days, the reasons for the delay must be documented (this may include pictures) and there must be a narrative explaining why the work cannot be accomplished within the seven day time period. The permittee shall correct the problem as soon as weather conditions or issues allow.
 - (d) Corrective actions may be required by the Department. The permittee must comply with any corrective actions required by the Department as a result of permit violations found during an inspection.

V. BMP REQUIREMENTS

1. The information, practices, and BMP requirements in this section shall be implemented on site and, where noted, provided for in the SWPPP.
2. Existing vegetation and trees shall be preserved where practicable. The permittee is encouraged to preserve topsoil where practicable. Trees designated for preservation should have a protective barrier outside of the dripline, or the area directly located under the outer reaches of the tree's branches.
3. The permittee shall select appropriate BMPs for use at the site and list them in the SWPPP. When selecting effective BMPs, the permittee shall consider stormwater volume and velocity and shall incorporate more than one BMP and sequential treatment devices where the use of a single BMP is ineffective to prevent or minimize sediment or other pollutants from leaving the site. Permittee should consider a schedule for performing erosion control measures when selecting BMPs.
4. The SWPPP shall include a description of both structural and non-structural BMPs that will be used at the site.
 - (a) The SWPPP shall provide the following general information for each BMP which will be used one or more times at the site:
 - 1) Physical description of the BMP;
 - 2) Site conditions that must be met for effective use of the BMP;
 - 3) BMP installation/construction procedures, including typical drawings; and
 - 4) Operation and maintenance procedures and schedules for the BMP.
 - (b) The SWPPP shall provide the following information for each specific instance where a BMP is to be installed:
 - 1) Whether the BMP is temporary or permanent;
 - 2) When the BMP will be installed in relation to each phase of the land disturbance procedures to complete the project; and
 - 3) Site conditions that must be met before removal of the BMP if the BMP is not a permanent BMP.
5. Structural BMP Installation: The permittee shall ensure all BMPs are properly installed and operational at the locations and relative times specified in the SWPPP.
 - (a) Perimeter control BMPs for runoff from disturbed areas shall be installed or existing vegetative areas marked for preservation before general site clearing is started. Note this requirement does not apply to earth disturbances related to initial site clearing and establishing entry, exit, or access of the site, which may require that stormwater controls be installed immediately after the earth disturbance.
 - (b) For phased projects, BMPs shall be properly installed as necessary prior to construction activities.
 - (c) Stormwater discharges which leave the site from disturbed areas shall pass through an appropriate impediment to sediment movement such as a sedimentation basin, sediment traps (including vegetative buffers), or silt fences prior to leaving the land disturbance site.
 - (d) A drainage course change shall be clearly marked on a site map and described in the SWPPP.
 - (e) If vegetative stabilization measures are being implemented, stabilization efforts are considered "installed" when all activities

necessary to seed or plant the area are completed. Vegetative stabilization is not considered “operational” until the vegetation is established.

6. Install sediment controls along any perimeter areas of the site that are downgradient from any exposed soil or other disturbed areas. Prevent stormwater from circumventing the edge of the perimeter control. For sites where perimeter controls are infeasible, other practices shall be implemented to minimize discharges to perimeter areas of the site.
7. For surface waters of the state, defined in Section 644.016.1(27) RSMo, located on or adjacent to the site, the permittee must maintain a riparian buffer or structural equivalent in accordance with at least one of the following options. The selection and location must be described in the SWPPP.
 - (a) Provide and maintain a 50-foot undisturbed natural buffer; or
 - (b) Provide and maintain an undisturbed natural buffer that is less than 50 feet and is supplemented by erosion and sediment controls that achieve the sediment load reduction equivalent to a 50-foot undisturbed natural buffer; or
 - (c) If infeasible to provide and maintain an undisturbed natural buffer of any size, implement erosion and sediment controls to achieve the sediment load reduction equivalent to a 50-foot undisturbed natural buffer.
 - (d) The permittee is not required to comply with (a), (b), or (c) above if one or more of the following exceptions apply and documentation is provided in the SWPPP:
 - 1) If there is no discharge of stormwater to waters of the state through the area between the disturbed portions of the site and waters of the state located within 50 feet of the site. This includes situations where the permittee has implemented permanent control measures that will prevent such discharges, such as a berm or other barrier.
 - 2) Where no natural buffer exists due to preexisting development disturbances that occurred prior to the initiation of planning for the current development of the site.
 - a. Where some natural buffer exists but portions of the area within 50 feet of the waters of the state are occupied by preexisting development disturbances the permittee is required to comply with (a), (b), or (c) above.
 - 3) For linear projects where site constraints make it infeasible to implement a buffer or equivalent provided the permittee limit disturbances within 50 feet of any waters of the state and/or the permittee provides supplemental erosion and sediment controls to treat stormwater discharges from earth disturbances within 50 feet of the water of the state. The permittee must also document in the SWPPP the rationale for why it is infeasible for the permittee to implement (a), (b), or (c) and describe any buffer width retained and supplemental BMPs installed.
 - (e) Where the permittee is retaining a buffer of any size, the buffer should be measured perpendicularly from any of the following points, whichever is further landward from the water:
 - 1) The ordinary high water mark of the water body, defined as the line on the shore established by fluctuations of water and indicated by physical characteristics such as a clear, natural line impressed on the bank, shelving, changes in the character of soil, destruction of terrestrial vegetation, and/or the presence of litter and debris; or
 - 2) The edge of the stream or river bank, bluff, or cliff, whichever is applicable.
8. Slopes for disturbed areas must be identified in the SWPPP. A site map or maps defining the sloped areas for all phases of the project must be included in the SWPPP. The disturbance of steep slopes shall be minimized.
9. Manage stockpiles or land clearing debris piles composed, in whole or in part, of sediment and/or soil.
 - (a) Locate the piles outside of any natural buffers zones, established under the condition above, and away from any stormwater conveyances, drain inlets, and areas where stormwater flow is concentrated;
 - (b) Install a sediment barrier along all downgradient perimeter areas;
 - (c) Prevent stormwater flows from causing erosion of stockpiles, for example, by diverting flows around them.
 - (d) For piles that will be unused for 14 or more days, provide cover with appropriate temporary stabilization in accordance with Part V. BMP REQUIREMENTS, Condition 13.
 - (e) Rinsing, sweeping, or otherwise placing any soil, sediment, debris, or stockpiled product which has accumulated on pavement or other impervious surfaces into any stormwater conveyance, storm drain inlet, or water of the state is prohibited.
10. The site shall include BMPs for pollution prevention measures and shall be noted in the SWPPP. At minimum such measures must be designed, installed, implemented, and maintained to:
 - (a) Minimize the discharge of pollutants from equipment and vehicle rinsing; no detergents, additives, or soaps of any kind shall be used. Rinse waters must be treated in a sediment basin or alternative control that provides equivalent or better treatment prior to discharge;
 - (b) Minimize the exposure of building materials, building products, construction wastes, trash, landscape materials, fertilizers, pesticides, herbicides, detergents, sanitary waste, and other materials present on the site to precipitation and to stormwater;
 - (c) Minimize the discharge of pollutants from spills and leaks and implement chemical spill and leak prevention and response procedures, including, but not limited to, the installation of containment berms and use of drip pans at petroleum product and liquid storage tanks and containers; and
 - (d) Prevent discharges from causing or contributing to an exceedance of water quality standards including general criteria.

11. Sedimentation Basins: The SWPPP shall include a sedimentation basin for each drainage area with ten or more acres disturbed at one time.
- (a) The sedimentation basin shall be sized, at a minimum, to treat a local 2-year, 24-hour storm.
 - (b) Sediment basins shall not be constructed in any waters of the state or natural buffer zones.
 - (c) Discharges from dewatering activities shall be managed by appropriate controls. The SWPPP shall include a description of any anticipated dewatering methods and specific BMPs designed to treat dewatering water.
 - 1) Appropriate controls include, but are not limited to, sediment socks, dewatering tanks, tube settlers, weir tanks, filtration systems (e.g. bag or sand filters), and passive treatment systems that are designed to remove or retain sediment.
 - 2) Erosion controls and velocity dissipation devices (e.g. check dams, riprap, and vegetated buffers) to prevent erosion at inlets, outlets, and discharge points shall be utilized.
 - 3) Water with an oil sheen shall not be discharged and shall be marked in SWPPP.
 - 4) Visible floating solids and foam shall not be discharged.
 - (d) Until final stabilization has been achieved, sediment basins and impoundments shall utilize outlet structures or floating skimmers that withdraw water from the surface when discharging.
 - 1) Under frozen conditions, it may be considered infeasible to withdraw water from the surface and an exception can be made for that specific period as long as discharges that may contain sediment and other pollutants are managed by appropriate controls. If determined infeasible due to frozen conditions, documentation must be provided in the SWPPP to support the determination, including the specific conditions or time period when this exception applies.
 - (e) Accumulated sediment shall not exceed 25% of total volume or as prescribed in the design, whichever is less. Note in the SWPPP the locations for disposal of the material removed from sediment basins.
 - (f) Prevent discharges to the receiving stream causing visual turbidity. For the purposes of this permit, visual turbidity refers to a sediment plume or other cloudiness in the water caused by sediment that can be identified by an observer.
 - (g) The SWPPP shall require the basin be maintained until final stabilization of the disturbed area served by the basin.

Where use of a sediment basin is infeasible, the SWPPP shall evaluate and specify other similarly effective BMPs to be employed to control erosion and sediment. These similarly effective BMPs shall be selected from appropriate BMP guidance documents authorized by this permit. The BMPs must provide equivalent water quality protection to achieve compliance with this permit. The SWPPP shall require both temporary and permanent sedimentation basins to have a stabilized spillway to minimize the potential for erosion of the spillway or basin embankment.

12. Soil disturbing activities on site that have ceased either temporarily or permanently shall initiate stabilization immediately in accordance with the options below. For soil disturbing activities that have been temporarily ceased on any portion of the site and will not resume for a period exceeding 14 calendar days:
- (a) The permittee shall construct BMPs to establish interim stabilization; and
 - (b) Stabilization must be initiated immediately and completed within 14 calendar days.
 - (c) For soil disturbing activities that have been permanently ceased on any portion of the site, final stabilization of disturbed areas must be initiated immediately and completed within 14 calendar days.
 - 1) Extension to the 14-day completion period for temporary and final stabilization may be made due to weather and equipment malfunctions. In these circumstances, the justification for the extension to the 14 day shall be documented in the SWPPP. The discontinuation or continuation of the extension may be determined by review of the Department staff when on site.
 - (d) Until stabilization is complete, interim sediment control shall consist of well-established and maintained BMPs that are reasonably certain to protect waters of the state from sediment pollution over an extended period of time. This may require adding more BMPs to an area than is normally used during daily operations. The types of BMPs used must be suited to the area disturbed, taking into account the number of acres exposed and the steepness of the slopes. If the slope of the area is greater than 3:1 (three feet horizontal to one foot vertical) or if the slope is greater than 3% and greater than 150 feet in length, then the permittee shall establish interim stabilization within seven days of ceasing operations on that part of the site. The following activities would constitute the immediate initiation of stabilization:
 - 1) Prepping the soil for vegetative or non-vegetative stabilization as long as seeding, planting, and/or installation of non-vegetative stabilization products takes place as soon as practicable;
 - 2) Applying mulch or other non-vegetative product to the exposed areas;
 - 3) Seeding or planting the exposed areas;
 - 4) Finalizing arrangements to have stabilization product fully installed in compliance with the deadlines for completing stabilization.
 - (e) If vegetative stabilization measures are being implemented, stabilization is considered "installed" when all activities necessary to seed or plant the area are completed. Installed does not mean established.
 - (f) If non-vegetative stabilization measures are being implemented, stabilization is considered "installed" when all such measures are implemented or applied.
 - 1) Non-vegetative stabilization shall prevent erosion and shall be chosen for site conditions, such as slope and flow of

stormwater.

- (g) Final stabilization is not considered achieved until vegetation has grown and established to meet the requirements below.
13. Prior to removal of BMPs, ceasing site inspections, and requesting termination of the permit, final stabilization must be achieved. Final stabilization shall be achieved as soon as possible once land disturbance activities have ceased. Document in the SWPPP the type of stabilization and the date final stabilization is achieved.
- (a) The project is considered to have achieved final stabilization when perennial vegetation (excluding volunteer vegetation), pavement, buildings, or structures using permanent materials (i.e. riprap, gravel, etc.) cover all areas that have been disturbed. With respect to areas that have been vegetated, vegetation must be at least 70% coverage of 100% of the vegetated areas on site. Vegetation must be evenly distributed.
 - (b) Disturbed areas on agricultural land are considered to have achieved final stabilization when they are restored to their preconstruction agricultural use. If former agricultural land is changing to non-agricultural use, this is no longer considered agricultural land and shall follow condition (a).
 - (c) If the intended function of a specific area of the site necessitates that it remain disturbed, final stabilization is considered achieved if all of the following are met:
 - 1) Only the minimum area needed remains disturbed (i.e. dirt access roads, motocross tracks, utility pole pads, areas being used for storage of vehicles, equipment, materials). Other areas must meet the criteria above.
 - 2) Permanent structural BMPs (rock checks, berms, grading, etc.) or non-vegetative stabilization measures are implemented and designed to prevent sediment and other pollutants from entering waters of the state.
 - 3) Inspection requirements in Part IV. SWPPP MANAGEMENT REQUIREMENT, Condition 11 are met and documented in the SWPPP.
 - (d) Winter weather and frozen conditions do not excuse any of the above final stabilization requirements. If vegetation is required for stabilization the permittee must maintain BMPs throughout winter weather and frozen conditions until thawing and vegetation meets final stabilization criteria above. Document stabilization attempts during frozen conditions in the SWPPP. Consider future freezing when removing vegetation and plan with temporary stabilization techniques before the ground becomes frozen.

VI. PERMIT TERMINATION

1. Until the permittee terminates coverage under this permit, the permittee must comply with all conditions in the permit, including continuation of site inspections and public notification signage posted. To terminate permit coverage, the permittee must submit to the appropriate Regional Office a complete and accurate Request for Termination of Operating Permit which certifies that the site meets the following requirements:
- (a) For any areas that (1) were disturbed during construction, (2) are not covered over by permanent structures, and (3) over which the permittee had control during the construction activities, the requirements for final vegetative or non-vegetative stabilization in Part V BMP REQUIREMENTS, Condition 13;
 - (b) The permittee has removed and properly disposed of all construction materials, waste, and waste handling devices and has removed all equipment and vehicles that were used during construction, unless intended for long-term use following termination of permit coverage;
 - (c) The permittee has removed all temporary BMPs that were installed and maintained during construction, except those that are intended for long-term use following termination of permit coverage or those that are biodegradable; and
 - (d) The permittee has removed all potential pollutants and pollutant-generating activities associated with construction, unless needed for long-term use following termination of permit coverage.

The Department may request photographs that clearly document compliance with termination requirements.

2. The permit may be terminated if;
- (a) There has been a transfer of control of all areas of the site for which the current permittee is responsible under this permit to another operator, and that operator has obtained coverage under this permit; or
 - (b) Coverage under an individual or alternative general NPDES permit, with land disturbance conditions, has been obtained.

VII. SAMPLING REQUIREMENTS

The permittee is not required to sample stormwater under this permit. The Department may require sampling and reporting as a result of illegal discharges, compliance issues related to water quality concerns or BMP effectiveness, or evidence of off-site impacts from activities at the site. If such an action is needed, the Department will specify in writing the sampling requirements, including such information as location and extent. If the permittee refuses to perform sampling when required, the Department may terminate the general permit and require the facility to obtain a site-specific permit with sampling requirements.

VIII. STANDARD PERMIT CONDITIONS

1. Records: The permittee shall retain copies of this general permit, the SWPPP and all amendments for the site named in the State Operating Permit, results of any monitoring and analysis, and all site inspection records required by this general permit.
 - (a) The records shall be accessible during normal business hours and retained for a period of at least three (3) years from the date of termination.
 - (b) The permittee shall provide a copy (electronic or otherwise) of the SWPPP to the Department, USEPA, or any local agency or government representative if they request a copy in the performance of their official duties within 24 hours of the request (or next working day), unless given more time by the representative.
 - (c) The permittee shall provide a copy of the SWPPP to those who are responsible for installation, operation, or maintenance of any BMP. The permittee, their representative, and/or the contractor(s) responsible for installation, operation and maintenance of the BMPs shall have a current copy of the SWPPP with them when on the project site.
2. Land Ownership and Change of Ownership: Federal and Missouri stormwater regulations [10 CSR 20-6.200(1) (B)] require a stormwater permit and erosion control measures for all land disturbances of one or more acres. These regulations also require a permit for land disturbance sites less than one acre if the lot is part of a larger common plan of development or sale.
 - (a) If the permittee sells any portion of the permitted site to a developer for commercial, industrial, or residential use, this land remains a part of the common sale and the new owner must obtain a permit prior to conducting any land disturbance activity. Therefore, the original permittee must amend the SWPPP to show that the property has been sold and, therefore, no longer under the original permit coverage.
 - (b) Property of any size which is part of a larger common plan of development where the property has achieved final stabilization and the original permit terminated will require application of a new land disturbance permit for any future land disturbance activity unless the activity is by an individual residential building lot owner on a site less than one acre.
 - (c) If a portion of a larger common plan of development is sold to an individual for the purpose of building his or her own private residence, a permit is required if the disturbed portion of the land sold is equal to or greater than one acre. No permit is required, however, for less than one acre of land disturbed on the portion sold.
3. Permit Transfer: This permit may not be transferred to a new owner in any fashion except by submitting an Application for Transfer of Operating Permit signed by the seller and buyer of the site along with the appropriate modification fee. In some cases, revocation and reissuance may be necessary. Facilities that undergo transfers of ownership without notice to the Department are considered to be operating without a permit.
4. Termination: This permit may be terminated when the project has achieved final stabilization, defined in Part VI. PERMIT TERMINATION.
 - (a) In order to terminate the permit, the permittee shall notify the Department by submitting the form Request for Termination of Operating Permit Form MO 780-2814. The form should be submitted to the appropriate Regional Office or through an approved electronic system if it should become available.
 - (b) The Cover Page (Certificate Page) of the Master General Permit for Land Disturbance specifies the “effective date” and the “expiration date” of the Master General Permit. The “issued date” along with the “expiration date” will appear on the State Operating Permit issued to the applicant. **This permit does not continue administratively beyond the expiration date.**
5. Duty to Reapply: If the project or development completion date will be after the expiration date of this general permit, then the permittee must reapply to the Department for a new permit. This permit may be applied for and issued electronically in accordance with Section 644.051.10, RSMo.
 - (a) Due to the nature of the electronic permitting system, a period of time may be granted at the discretion of the Department in order to apply for a new permit after the new version is effective. Applicants must maintain appropriate best management practices and inspections during the discretionary period.
6. Duty to Comply: The permittee must comply with all conditions of this permit. Any permit noncompliance constitutes a violation of the Missouri Clean Water Law and Federal Clean Water Act and is grounds for enforcement action; for permit termination, revocation and reissuance, or modification; or denial of a permit renewal application.
7. Modification, Revocation, and Reopening:
 - (a) If at any time the Department determines that the quality of waters of the state may be better protected by reopening this permit, or revoking this permit and requiring the owner/operator of the permitted site to apply for a site-specific permit, the Department may revoke a general permit and require any person to obtain such an operating permit as authorized by 10 CSR20-6.010(13) and 10 CSR 20-6.200(1)(B).

- (b) If this permit is reopened, modified, or revoked pursuant to this Section, the permittee retains all rights under Chapter 536 and 644 Revised Statutes of Missouri upon the Department's reissuance of the permit as well as all other forms of administrative, judicial, and equitable relief available under law.
8. Other Information: Where the permittee becomes aware that it failed to submit any relevant facts in a permit application or submitted incorrect information in a permit application or in any report to the Department, it shall promptly submit such facts or information.
9. Duty to Provide Information: The permittee shall furnish to the Department, within 24 hours unless explicitly granted more time in writing, any information which the Department may request to determine whether cause exists for modifying, revoking and reissuing, or terminating this permit or to determine compliance with this permit. The permittee shall also furnish to the Department upon request, copies of records required to be kept by this permit.
10. Inspection and Entry: The permittee shall allow the Department, or an authorized representative (including an authorized contractor acting as a representative of the Department), upon presentation of credentials and other documents as may be required by law, to:
- (a) Enter upon the permittee's premises where a regulated facility or activity is located or conducted or where records must be kept under the conditions of the permit;
 - (b) Have access to and copy, at reasonable times, any records that must be kept under the conditions of this permit;
 - (c) Inspect at reasonable times any facilities, equipment (including monitoring and control equipment), practices, or operations regulated or required under this permit; and
 - (d) Sample or monitor at reasonable times, for the purposes of assuring permit compliance or as otherwise authorized by the Federal Clean Water Act or Missouri Clean Water Law, any substances or parameters at any location.
11. Signatory Requirement:
- (a) All permit applications, reports required by the permit, or information requested by the Department shall be signed and certified. (See 40 CFR 122.22 and 10 CSR 20-6.010)
 - (b) The Federal Clean Water Act provides that any person who knowingly makes any false statement, representation, or certification in any record or other document submitted or required to be maintained under this permit (including monitoring reports or reports of compliance or non-compliance) shall, upon conviction, be punished by a fine of not more than \$10,000 per violation, or by imprisonment for not more than six (6) months per violation, or by both.
 - (c) The Missouri Clean Water Law provides that any person who knowingly makes any false statement, representation or certification in any application, record, report, plan, or other document filed or required to be maintained pursuant to sections 644.006 to 644.141 shall, upon conviction, be punished by a fine of not more than ten thousand dollars, or by imprisonment for not more than six months, or by both.
12. Property Rights: This permit does not convey any property rights of any sort or any exclusive privilege.
13. Notice of Right to Appeal: If you were adversely affected by this decision, you may be entitled to pursue an appeal before the administrative hearing commission (AHC) pursuant to Sections 621.250 and 644.051.6 RSMo. To appeal, you must file a petition with the AHC within thirty days after the date this decision was mailed or the date it was delivered, whichever date was earlier. If any such petition is sent by registered mail or certified mail, it will be deemed filed on the date it is mailed; if it is sent by any method other than registered mail or certified mail, it will be deemed filed on the date it is received by the AHC. Any appeal should be directed to:

Administrative Hearing Commission
U.S. Post Office Building, Third Floor
131 West High Street, P.O. Box 1557
Jefferson City, MO 65102-1557
Phone: 573-751-2422
Fax: 573-751-5018
Website: <https://ahc.mo.gov>

MISSOURI DEPARTMENT OF NATURAL RESOURCES FACT SHEET FOR MASTER GENERAL PERMIT MO-RAXXXX

The Federal Water Pollution Control Act [Clean Water Act (CWA)] Section 402 of Public Law 92-500 (as amended) established the National Pollution Discharge Elimination System (NPDES) permit program. This program regulates the discharge of pollutants from point sources into the waters of the United States and the release of stormwater from certain point sources. All such discharges are unlawful without a permit (Section 301 of the CWA). After a permit is obtained, a discharge not in compliance with all permit terms and conditions is unlawful. Missouri State Operating Permits (permit) are issued by the Missouri Department of Natural Resources (Department) under an approved program operated in accordance with federal and state laws (Federal CWA and Missouri Clean Water Law Section 644 as amended). Permits are issued for a period of five (5) years unless otherwise specified.

Per 40 CFR 124.56, 40 CFR 124.8, and 10 CSR 20-6.020(1)(A)2, a Fact Sheet shall be prepared to give pertinent information regarding the applicable regulations, rationale for the development of effluent limitations and conditions, and the public participation process for the permit. A Fact Sheet is not an enforceable part of an MSOP.

DEFINITIONS FOR THE PURPOSES OF THIS PERMIT:

Common Promotional Plan: A plan undertaken by one (1) or more persons to offer lots for sale or lease; where land is offered for sale by a person or group of persons acting in concert, and the land is contiguous or is known, designated, or advertised as a common unit or by a common name or similar names, the land is presumed, without regard to the number of lots covered by each individual offering, as being offered for sale or lease as part of a common promotional plan.

Dewatering: The act of draining rainwater and/or groundwater from basins, building foundations, vaults, and trenches.

Effective Operating Condition: For the purposes of this permit, a stormwater control is kept in effective operating condition if it has been implemented and maintained in such a manner that it is working as designed to minimize pollutant discharges.

Emergency-Related Project: A project initiated in response to a public emergency (e.g. earthquakes, extreme flooding conditions, tornado, disruptions in essential public services, pandemic) for which the related work requires immediate authorization to avoid imminent endangerment to human health/safety or the environment or to reestablish essential public services.

Exposed Soils: For the purposes of this permit, soils that as a result of earth-disturbing activities are left open to the elements.

Immediately: For the purposes of this permit, immediately should be defined as within 24 hours.

Impervious Surface: For the purpose of this permit, any land surface with a low or no capacity for soil infiltration including, but not limited to, pavement, sidewalks, parking areas and driveways, packed gravel or soil, or rooftops.

Infeasible: Infeasible means not technologically possible or not economically practicable and achievable in light of best industry practices.

Install or Installation: When used in connection with stormwater controls, to connect or set in position stormwater controls to make them operational.

Land Disturbance Site or Site: The land or water area where land disturbance activities will occur and where stormwater controls will be installed and maintained. The land disturbance site includes construction support activities, which may be located at a different part of the property from where the primary land disturbance activity will take place or on a different piece of property altogether. Off-site borrow areas directly and exclusively related to the land disturbance activity are part of the site and must be permitted.

Larger Common Plan of Development or Sale: A continuous area where multiple separate and distinct construction activities are occurring under one plan, including any offsite borrow areas that are directly and exclusively related to the land disturbance activity. Off-site borrow areas utilized for multiple different land disturbance projects are considered their own entity and are not part of the larger common plan of development or sale. See definition of Common Promotional Plan to understand what a 'common plan' is.

Minimize: To reduce and/or eliminate to the extent achievable using stormwater controls that are technologically available and economically practicable and achievable in light of best industry practices.

Non-structural BMP: Institutional, educational, or pollution prevention practices designed to limit the amount of stormwater runoff or

pollutants that are generated in the landscape. Examples of non-structural BMPs include picking up trash and debris, sweeping up nearby sidewalks and streets, maintaining equipment, and training site staff on stormwater control practices.

Operational: for the purposes of this permit, stormwater controls are made “operational” when they have been installed and implemented, are functioning as designed, and are properly maintained.

Ordinary High Water Mark: The line on the shore established by fluctuations of water and indicated by physical characteristics such as a clear, natural line impressed on the bank, shelving, changes in the character of soil, destruction of terrestrial vegetation, and/or the presence of litter and debris.

Outfall: For the purposes of this permit, outfalls are locations where stormwater exits the site property, including pipes, ditches, swales, channels, or other conduits that transport stormwater discharges associated with the construction activity.

Peripheral: For the purposes of this permit, peripheral should be defined as the outermost boundary of the area that will be disturbed.

Permanently: For the purposes of this permit, permanently is defined as any activity that has been ceased without any intentions of future disturbance.

Pollution Prevention Controls (or Measures): Stormwater controls designed to reduce or eliminate the addition of pollutants to construction site discharges through analysis of pollutant sources, implementation of proper handling/disposal practices, employee education, and other actions.

Qualified Person (inspections): A person knowledgeable in the principles and practice of erosion and sediment controls and pollution prevention who possesses the appropriate skills and training to assess conditions at the construction site that could impact stormwater quality and the appropriate skills and training to assess the effectiveness of any stormwater controls selected and installed to meet the requirements of this permit.

Stormwater Control (also referred to as sediment/erosion controls): refers to any temporary or permanent BMP or other method used to prevent or reduce the discharge of pollutants to waters of the state.

Structural BMP: Physical sediment/erosion controls working individually or as a group (treatment train) appropriate to the source, location, and area climate for the pollutant to be controlled. Examples of structural BMPs include silt fences, sedimentation ponds, erosion control blankets, and seeding.

Temporary Stabilization: A condition where exposed soils or disturbed areas are provided temporary vegetation and/or non-vegetative protective cover to prevent erosion and sediment loss. Temporary stabilization may include temporary seeding, geotextiles, mulches, and other techniques to reduce or eliminate erosion until either final stabilization can be achieved or until further construction activities take place to re-disturb this area.

Treatment Train: A multi-BMP approach to managing the stormwater volume and velocity and often includes erosion prevention and sediment control practices often applied when the use of a single BMP is inadequate in preventing the erosion and transport of sediment. A good option to utilize as a corrective action.

Volunteer Vegetation: A volunteer plant is a plant that grows on its own, rather than being deliberately planted for stabilization purposes. Volunteers often grow from seeds that float in on the wind, are dropped by birds, or are inadvertently mixed into soils. Commonly, volunteer vegetation is referred to as ‘weeds’. This does not meet the requirements for final stabilization.

Waters of the State: Section 644.016.1(27) RSMo. defines waters of the state as, “All waters within the jurisdiction of this state, including all rivers, streams, lakes and other bodies of surface and subsurface water lying within or forming a part of the boundaries of the state which are not entirely confined and located completely upon lands owned, leased or otherwise controlled by a single person or by two or more persons jointly or as tenants in common.”

EXAMPLES OF TYPES; BUT NOT LIMITED TO’S:

Building materials and building products typically present at constructions sites: Asphalt sealants, copper flashing, roofing materials, adhesives, concrete admixtures, and gravel and mulch stockpiles

Construction and domestic (solid) waste: Packaging materials, scrap construction materials, masonry products, timber, pipe and electrical cuttings, plastics, Styrofoam, concrete, demolition debris, and other trash or building materials.

Hazardous or toxic waste that may be present at construction sites: Caulks, sealants, fluorescent light ballasts (mercury), solvents, petroleum-based products, wood preservatives, additives, curing compounds, and acids.

Pollutant-generating activities: Paving operations; concrete, paint, and stucco washout and waste disposal; solid waste storage and disposal; and dewatering activities.

Types of pollutants typically found at construction sites: Sediment; nutrients; heavy metals; pesticides and herbicides; oil and grease; bacteria and viruses; trash, debris, and solids; treatment polymers; and any other toxic chemicals.

BMPs for Erosion Control: Temporary/permanent seeding, hydroseeding, mulch and hydromulch, erosion control blankets, dust control, sodding, slope protection, and preservation of existing vegetation.

BMPs for Sediment Control: Fabric drop inlet protection, excavated drop inlet protection, block and gravel inlet protection, domed inlet protection, inlet bag or insert, silt fence, temporary diversion, right-of-way/diversion bar, temporary slope drain, subsurface drain, rock outlets, berms, filter socks, transition mats, temporary sediment trap, energy dissipaters, rock check dam, ditch checks, wattles, straw bale barrier, vegetative buffer strip, sediment basin, particle curtains, frog logs, and dispersion fields.

PERMITTING FOR LAND DISTURBANCE

In order to apply for the states MO-RA land disturbance permit you will need to utilize the Department's online ePermitting system. In order to access this, you will need to register an account with the Missouri Gateway for Environmental Management (MoGEM). The following user guides will assist you with this process.

MoGEM Website: <https://dnr.mo.gov/data-e-services/missouri-gateway-environmental-management-mogem>

ePermitting Website: <https://dnr.mo.gov/data-e-services/water/electronic-permitting-epermitting>

How to Register: <https://dnr.mo.gov/document-search/registering-new-user-account-within-missouri-gateway-environmental-management-mogem-portal>

ePermitting User Guides: (found on ePermitting website)

- How to Add a Facility: <https://dnr.mo.gov/document-search/epermitting-chapter-2-home-facility-search-associate-new-facility>
- How to Apply for a Permit: <https://dnr.mo.gov/document-search/epermitting-chapter-3-create-new-permit>.

PART I – BASIC PERMIT INFORMATION

Facility Type:	Industrial Stormwater; Land Disturbance
Facility SIC Code(s):	1629
Facility Description:	Construction or land disturbance activity (e.g., clearing, grubbing, excavating, grading, filling, and other activities that result in the destruction of the root zone and/or land disturbance activity that is reasonably certain to cause pollution to waters of the state).

This permit establishes a SWPPP requirement for pollutants of concern from all facilities covered under this permit. 10 CSR 20-6.200(7) specifies “general permits shall contain BMP requirements and/or monitoring and reporting requirements to keep the stormwater from becoming contaminated”.

Land disturbance activities include clearing, grubbing, excavating, grading, filling and other activities that result in the destruction of the root zone and/or other activities that are reasonably certain to cause pollution to waters of the state.

A Missouri State Operating Permit for land disturbance permit is required for construction disturbance activities of one or more acres, or for construction activities that disturb less than one acre when they are part of a larger common plan of development or sale that will disturb a cumulative total of one or more acres over the life of the project per 10CSR 20-6.200(1)(D)28.

The primary requirement of a land disturbance permit is the development of a SWPPP which incorporates site-specific BMPs to minimize soil exposure, soil erosion, and the discharge of pollutants. The SWPPP ensures the design, implementation, management and maintenance of BMPs in order to prevent sediment and other pollutants from leaving the site.

When it precipitates, stormwater washes over the loose soil on a construction site and various other materials and products being stored outside. As stormwater flows over the site, it can pick up pollutants like sediment, debris, and chemicals from the loose soil and transport them to nearby storm sewer systems or directly into rivers, lakes, or coastal waters. The Missouri Department of Natural Resources is responsible for ensuring that construction site operators have the proper stormwater controls in place so that construction can proceed in a way that protects your community's clean water and the surrounding environment. One way the department helps protect water quality is by issuing land disturbance permits.

Local conditions are not considered when developing conditions for a general permit. A facility may apply for a site-specific permit if they desire a review of site-specific conditions.

CHANGES TO THE RENEWAL OF THIS PERMIT INCLUDE:

While drafting this permit for renewal, the Department hosted three public meetings held on January 27, February 17, and March 9, 2021, which allowed stakeholders to voice concerns about conditions within the permit and submit comments during the period of initial stakeholder involvement. These concerns were taken into consideration when drafting the permit. In addition to these meetings, the Department also held an informal review period for stakeholders to review the draft prior to the 30 day public comment period.

- Updated language throughout the permit to current permit language used by the Department and EPA.
- Added language for emergency related projects.
- Clarified conditions which were ambiguous.
- Reorganized sections/conditions for logical progression.
- Authorized permit transfers and some modifications.
- Sections added for termination procedures, discharges to special streams, and procedures for concrete washout.

PART II – RECEIVING STREAM INFORMATION

APPLICABLE DESIGNATIONS OF WATERS OF THE STATE:

Per Missouri Effluent Regulations (10 CSR 20-7.015), the waters of the state are divided into seven (7) categories. This permit applies to facilities discharging to the following water body categories:

- ✓ Missouri or Mississippi River [10 CSR 20-7.015(2)]
- ✓ Lakes or Reservoirs [10 CSR 20-7.015(3)]
- ✓ Losing Streams [10 CSR 20-7.015(4)]
- ✓ Metropolitan No-Discharge Streams [10 CSR 20-7.015(5)]
- ✓ Special Streams [10 CSR 20-7.015(6)]
- ✓ Subsurface Waters [10 CSR 20-7.015(7)]
- ✓ All Other Waters [10 CSR 20-7.015(8)]

Missouri Water Quality Standards (10 CSR 20-7.031) defines the Clean Water Commission water quality objectives in terms of "water uses to be maintained and the criteria to protect those uses." The receiving stream and/or 1st classified receiving stream's designated water uses shall be maintained in accordance with 10 CSR 20-7.031(24). A general permit does not take into consideration site-specific conditions.

MIXING CONSIDERATIONS:

This permit applies to receiving streams of varying low flow conditions. Therefore, the effluent limitations must be based on the smallest low flow streams considered, which includes waters without designated uses. As such, no mixing is allowed [10 CSR 20-7.031(5)(A)4.B.(I)(a)]. No Zone of Initial Dilution is allowed. [10 CSR 20-7.031(5)(A)4.B.(I)(b)].

RECEIVING STREAM MONITORING REQUIREMENTS:

There are no receiving water monitoring requirements recommended at this time.

PART III – RATIONALE AND DERIVATION OF EFFLUENT LIMITATIONS & PERMIT CONDITIONS

305(b) REPORT, 303(d) LIST, & TOTAL MAXIMUM DAILY LOAD (TMDL):

Section 305(b) of the Federal CWA requires each state identify waters not meeting Water Quality Standards and for which adequate water pollution controls have not been required. Water Quality Standards protect such beneficial uses of water as whole body contact, maintaining fish and other aquatic life, and providing drinking water for people, livestock, and wildlife. The 303(d) report, which includes the 303(d) list, helps state and federal agencies keep track of waters which are impaired but not addressed by normal water pollution control programs.

A TMDL is a calculation of the maximum amount of a given pollutant a body of water can absorb before its water quality is affected. If a water body is determined to be impaired as listed on the 303(d) list, then a watershed management plan will be developed which shall include the TMDL calculation. For facilities with an existing general permit before a TMDL is written on their receiving stream, the Department will evaluate the permit and may require any facility authorized by this general permit to apply for and obtain a site-specific operating permit.

ANTI-BACKSLIDING:

A provision in the Federal Regulations [CWA Section 303(d)(4); CWA Section 402(c); 40 CFR Part 122.44(I)] requires a reissued permit to be as stringent as the previous permit with some exceptions.

✓ Not Applicable: All effluent limitations in this permit are at least as protective as those previously established.

ANTIDEGRADATION:

Antidegradation policies ensure protection of water quality for a particular water body on a pollutant by pollutant basis to ensure Water Quality Standards are maintained to support beneficial uses such as fish and wildlife propagation and recreation on and in the water. This also includes special protection of waters designated as an Outstanding National Resource Water or Outstanding State Resource Water [10 CSR 20-7.031(3)(C)]. Antidegradation policies are adopted to minimize adverse effects on water.

The Department has determined the best avenue forward for implementing the Antidegradation requirements into general stormwater permits is by requiring the appropriate development and maintenance of a SWPPP. The SWPPP must identify all reasonable and effective BMPs, taking into account environmental impacts and costs. This analysis must document why no discharge or no exposure options are not feasible at the facility. This selection and documentation of appropriate control measures will then serve as the analysis of alternatives and fulfill the requirements of the Antidegradation Rule and Implementation Procedure 10 CSR 20-7.031(3) and 10 CSR 20-7.015(9)(A)5.

Any facility seeking coverage under this permit which undergoes expansion or discharges a new pollutant of concern must update their SWPPP and select reasonable and cost effective new BMPs. New facilities seeking coverage under this permit are required to develop a SWPPP including this analysis and documentation of appropriate BMPs. Renewal of coverage for a facility requires a review of the SWPPP to ensure the selected BMPs continue to be appropriate.

✓ Applicable; the facility must review and maintain stormwater BMPs as appropriate.

BENCHMARKS:

When a permitted feature or outfall consists of only stormwater, a benchmark may be implemented at the discretion of the permit writer. Benchmarks require the facility to monitor and, if necessary, replace and update stormwater control measures. Benchmark concentrations are not effluent limitations. A benchmark exceedance, therefore, is not a permit violation; however, failure to take corrective action is a violation of the permit. Benchmark monitoring data is used to determine the overall effectiveness of control measures and to assist the permittee in knowing when additional corrective actions may be necessary to comply with the limitations of the permit.

✓ Not applicable; this facility has stormwater-only outfalls and does not contain numeric benchmarks.

BEST MANAGEMENT PRACTICES:

Minimum site-wide BMPs are established in this permit to ensure all permittees are managing their sites equally to protect waters of the state from certain activities which could cause negative effects in receiving water bodies. If the minimum BMPs are not followed, the facility may violate general criteria [10 CSR 20-7.031(4)]. Statutes are applicable to all permitted facilities in the state; therefore, pollutants cannot be released unless in accordance with RSMo 644.011 and 644.016 (17).

During a short time period, construction sites can contribute more sediment to streams than can be deposited naturally during several decades. The resulting siltation and contribution of other pollutants from construction sites can cause physical, chemical, and biological harm to Missouri's waters. Land disturbance activities, such as clearing and grading the land surface, increases the potential for sediment discharges.

The previous version of this permit contained the majority of the BMPs required in this permit and were found to protect water quality. Additional BMPs were added to improve protections with language taken from the EPA's Construction General Permit.

Language was added for track out to clarify and to combine with the roadway conditions in the previous permit. Preventing sediment from entering roadway inlets will protect water quality. Requirements were added for concrete wash out management. This is a common activity on construction sites which had not been address in the previous permit. Containment of the wash out water will protect waters of the state. This language was adopted from the EPAs Construction General Permit.

This renewal requires certain operators be listed in the SWPPP, this was added to ensure all responsible parties are known to the staff on site in the event there is an environmental issue that needs attention.

Inspection conditions were added to clarify what parts of the site to inspect. By inspecting areas prone to pollution, such as material storage, or location where pollutants are like to leave the site, such as the outfall, there is increased protections to water quality by stopping pollutants before leaving the site, or correcting an issue quickly.

Inspection frequencies were reduced for areas where stabilization has been achieved. It was the permit writer's judgement that stabilized areas do not require inspections at the same frequency as active areas of a site as the stabilization is a BMP to reduce sediment loss. Additional inspections are required for sediment basin dewatering activities during times of dewatering. These activities

open the possibility for high volumes of sediment to be discharged into the receiving waters. By inspecting the discharge, the waters shall be better protected. Language was added to add the temporary reduction of inspections for areas that have frozen ground.

Condition was added for stockpile management to add clarity for operators on site. Migration of soil or product from mis-managed piles can enter waters of the state and cause water quality violations. Conditions were added to sediment basin dewater to increase the protection of receiving waters by increasing controls to retain sediment and keep it out of the discharged water.

Language was added to include National and State Resource Waters with added protections. Language for this was taken from the template for Missouri General Permits. These requirements also include waters with impairments for sediment, the pollutant of concern under this permit. Extra protections in these special stream requirements were added to clarify the discharges must be stormwater only.

Language was added to include the encouragement of preserving vegetation, trees, and soil. Clearing reduces the natural uptake of water and nutrients by vegetation and excessive grading can smooth the ground surface, increasing amount and velocity of runoff. Vegetation inhibits erosion as the roots hold the topsoil in place, while leaves protect the surface against rain. Once the vegetative cover is gone, erosion is accelerated. The longer the exposed area is subject to erosive forces, the more severe the effect. Clarification was added to define voluntary vegetation and to explain that these shallow rooted short-lived vegetation is not allowed as permanent stabilization.

CHANGES IN DISCHARGES OF TOXIC POLLUTANT:

This special condition reiterates the federal rules found in 40 CFR 122.44(f) and 122.42(a)(1). In these rules, the facility is required to report changes in amounts of toxic substances discharged. Toxic substances are defined in 40 CFR 122.2 as "...any pollutant listed as toxic under section 307(a)(1) or, in the case of "sludge use or disposal practices," any pollutant identified in regulations implementing section 405(d) of the CWA." Section 307 of the clean water act then refers to those parameters found in 40 CFR 401.15. The permittee should also consider any other toxic pollutant in the discharge as reportable under this condition.

DOMESTIC WASTEWATER, SLUDGE, AND BIOSOLIDS:

Domestic wastewater is defined as wastewater (i.e., human sewage) originating primarily from the sanitary conveyances of bathrooms and kitchens. Domestic wastewater excludes stormwater, animal waste, process waste, and other similar waste.

- ✓ Not applicable; this permit does not authorize discharge of domestic waste, sludge, or biosolids. This includes discharges to onsite lagoons. If a facility has an onsite lagoon, they may need to obtain a separate general or site specific permit to cover discharges or land application from this structure.

Sewage sludge is solid, semi-solid, or liquid residue generated during the treatment of domestic sewage in a treatment works; including but not limited to, domestic septage; scum or solids removed in primary, secondary, or advanced wastewater treatment process; and material derived from sewage sludge. Sewage sludge does not include ash generated during the firing of sewage sludge in a sewage sludge incinerator or grit and screening generated during preliminary treatment of domestic sewage in a treatment works. Biosolids are solid materials resulting from domestic wastewater treatment meeting federal and state criteria for productive use (i.e. fertilizer) and after having pathogens removed.

- ✓ Not applicable; this permit does not authorize discharge or land application of biosolids or sludge. A separate permit must be obtained for these activities, either general or site specific.

EFFLUENT LIMITATION GUIDELINE:

Effluent Limitation Guidelines, or ELGs, are found at 40 CFR 400-499. These are limitations established by the EPA based on the SIC code and the type of work a facility is conducting. Most ELGs are for process wastewater and some address stormwater. All are technology based limitations which must be met by the applicable facility at all times.

- ✓ The industries covered under this permit have an associated Effluent Limit Guideline (ELG) which is applicable to the stormwater discharges in this permit and is applied under 40 CFR 125.3(a).

ELECTRONIC DISCHARGE MONITORING REPORT (EDMR) SUBMISSION SYSTEM:

The U.S. Environmental Protection Agency (EPA) promulgated a final rule on October 22, 2015, to modernize Clean Water Act reporting for municipalities, industries, and other facilities by converting to an electronic data reporting system. The final rule requires regulated entities and state and federal regulators to use information technology to electronically report data required by the National Pollutant Discharge Elimination System (NPDES) permit program instead of filing paper reports. To comply with the federal rule, the Department is requiring all permittees to begin submitting discharge monitoring data and reports online.

- ✓ Not applicable; this permit has no limits to report.

GENERAL CRITERIA CONSIDERATIONS:

In accordance with 40 CFR 122.44(d)(1), effluent limitations shall be placed into permits for pollutants determined to cause, have reasonable potential to cause, or to contribute to, an excursion above any water quality standard, including narrative water quality criteria. In order to comply with this regulation, the permit writer has completed a reasonable potential determination on whether

discharges have reasonable potential to cause or contribute to an excursion of the general criteria listed in 10 CSR 20-7.031(4). In instances where reasonable potential exists, the permit includes limitations within the permit to address the reasonable potential. In discharges where reasonable potential does not exist, the permit may include monitoring to later determine the discharge's potential to impact the narrative criteria. Additionally, RSMo 644.076.1, as well as Standard Permit Conditions Part VIII of this permit state it shall be unlawful for any person to cause or allow any discharge of water contaminants from any water contaminant or point source located in Missouri in violation of sections 644.006 to 644.141 of the Missouri Clean Water Law or any standard, rule, or regulation promulgated by the commission.

LAND APPLICATION:

Land application, or surficial dispersion of wastewater and/or sludge, is performed by facilities to maintain a basin as no-discharge. Requirements for these types of operations are found in 10 CSR 20-6.015; authority to regulate these activities is from RSMo 644.026.

- ✓ Not applicable; this permit does not authorize operation of a surficial land application system to disperse wastewater or sludge.

LAND DISTURBANCE:

Land disturbance, sometimes called construction activities, are actions which cause disturbance of the root layer or soil; these include clearing, grading, and excavating of the land. 40 CFR 122.26(b)(14) and 10 CSR 20-6.200(3) requires permit coverage for these activities. Coverage is not required for facilities when only providing maintenance of original line and grade, hydraulic capacity, or to continue the original purpose of the facility.

- ✓ Applicable; this permit provides coverage for land disturbance activities. These activities have SWPPP requirements and may be combined with the standard site SWPPP. Land disturbance BMPs should be designed to control the expected peak discharges. The University of Missouri has design storm events for the 25 year 24 hour storm; these can be found at: http://ag3.agebb.missouri.edu/design_storm/comparison_reports/20191117_25yr_24hr_comparison_table.htm; to calculate peak discharges, the website <https://www.lmnoeng.com/Hydrology/rational.php> has the rational equation to calculate expected discharge volume from the peak storm events.

NUTRIENT MONITORING:

Nutrient monitoring is required for facilities characteristically or expected to discharge nutrients (nitrogenous compounds and/or phosphorus) when the design flow is equal to or greater than 0.1 MGD per 10 CSR 20-7.015(9)(D)8.

- ✓ This is a stormwater only permit; therefore, it is not subject to provisions found in 10 CSR 20-7.015 per 10 CSR 20-7.015(1)(C).

OIL/WATER SEPARATORS:

Oil water separator (OWS) tank systems are frequently found at industrial sites where process water and stormwater may contain oils and greases, oily wastewaters, or other immiscible liquids requiring separation. Food industry discharges typically require pretreatment prior to discharge to municipally owned treatment works. Per 10 CSR 26-2.010(2)(B), all oil water separator tanks must be operated according to manufacturer's specifications and authorized in NPDES permits per 10 CSR 26-2.010(2) or may be regulated as a petroleum tank.

- ✓ Not applicable; this permit does not authorize the operation of OWS. The facility must obtain a separate permit to cover operation of and discharge from these devices.

OPERATOR CERTIFICATION REQUIREMENTS:

As per 10 CSR 20-6.010(8) Terms and Conditions of a Permit, permittees shall operate and maintain facilities to comply with the Missouri Clean Water Law and applicable permit conditions and regulations. Operators or supervisors of operations at regulated wastewater treatment facilities shall be certified in accordance with [10 CSR 20-9.020(2)] and any other applicable state law or regulation.

- ✓ Not applicable; the facilities covered under this permit are not required to have a certified operator.

PERMIT SHIELD:

The permit shield provision of the Clean Water Act (Section 402(k)) and Missouri Clean Water Law (644.051.16 RSMo) provides that when a permit holder is in compliance with its NPDES permit or MSOP, they are effectively in compliance with certain sections of the Clean Water Act and equivalent sections of the Missouri Clean Water Law. In general, the permit shield is a legal defense against certain enforcement actions but is only available when the facility is in compliance with its permit and satisfies other specific conditions, including having completely disclosed all discharges and all facility processes and activities to the Department at time of application. It is the facility's responsibility to ensure that all potential pollutants, waste streams, discharges, and activities, as well as wastewater land application, storage, and treatment areas, are all fully disclosed to the Department at the time of application or during the draft permit review process. Subsequent requests for authorization to discharge additional pollutants or expanded or newly disclosed flows, or for authorization for previously unpermitted and undisclosed activities or discharges, will likely require permit modification or may require the facility be covered under a site specific permit.

PRETREATMENT PROGRAM:

This permit does not regulate pretreatment requirements for facilities discharging to an accepting permitted wastewater treatment facility. If applicable, the receiving entity (the publicly owned treatment works - POTW) must ensure compliance with any effluent

limitation guidelines for pretreatment listed in 40 CFR Subchapter N per 10 CSR 20-6.100. Pretreatment regulations per RSMo 644.016 are limitations on the introduction of pollutants or water contaminants into publicly owned treatment works or facilities.

- ✓ Not Applicable; the facilities covered under this permit are not required to meet pretreatment requirements under an ELG.

PUBLIC NOTICE OF COVERAGE FOR AN INDIVIDUAL FACILITY:

Public Notice of reissuance of coverage is not required unless the facility is a specific type of facility as defined in 10 CSR 20-6.200(1). The need for an individual public notification process shall be determined and identified in the permit [10 CSR 20-6.020(1)(C)5.].

- ✓ Not applicable; public notice is not required for coverage under this permit to individual facilities. The MGP is public noticed in lieu of individual permit PN requirements.

REASONABLE POTENTIAL ANALYSIS (RPA):

Federal regulation 40 CFR Part 122.44(d)(1)(i) requires effluent limitations for all pollutants which are or may be discharged at a level which will cause or have the reasonable potential to cause or contribute to an in-stream excursion above narrative or numeric water quality standard. In accordance with 40 CFR Part 122.44(d)(iii) if the permit writer determines any given pollutant has the reasonable potential to cause or contribute to an in-stream excursion above the water quality standard, the permit must contain effluent limits for the pollutant.

- ✓ The permit writer reviewed industry materials, available past inspections, and other documents and research to evaluate general and narrative water quality reasonable potential for this permit. Permit writers also use the Department's permit writer's manual, the EPA's permit writer's manual (<https://www.epa.gov/npdes/npdes-permit-writers-manual>), program policies, and best professional judgment. For each parameter in each permit, the permit writer carefully considers all applicable information regarding technology based effluent limitations, effluent limitation guidelines, and water quality standards. Best professional judgment is based on the experience of the permit writer, cohorts in the Department and resources at the EPA, research, and maintaining continuity of permits if necessary. For stormwater permits, the permit writer is required per 10 CSR 6.200(6)(B)2 to consider: A. application and other information supplied by the permittee; B. effluent guidelines; C. best professional judgment of the permit writer; D. water quality; and E. BMPs.

SCHEDULE OF COMPLIANCE (SOC):

Per § 644.051, RSMo, a permit may be issued with a Schedule of Compliance (SOC) to provide time for a facility to come into compliance with new state or federal effluent regulations, water quality standards, or other requirements. Such a schedule is not allowed if the facility is already in compliance with the new requirement or if prohibited by other statute or regulation. An SOC includes an enforceable sequence of interim requirements (e.g. actions, operations, or milestone events) leading to compliance with the Missouri Clean Water Law, its implementing regulations, and/or the terms and conditions of an operating permit. *See also* Section 502(17) of the Clean Water Act, and 40 CFR 122.2. For new effluent limitations, the permit may include interim monitoring for the specific parameter to demonstrate the facility is not already in compliance with the new requirement. Per 40 CFR 122.47(a)(1) and 10 CSR 20-7.031(11), compliance must occur as soon as possible. If the permit provides a schedule for meeting new water quality based effluent limits, an SOC must include an enforceable, final effluent limitation in the permit even if the SOC extends beyond the life of the permit.

- ✓ Not Applicable: This permit does not contain a SOC.

SETBACKS:

Setbacks, sometimes called separation distances, are common elements of permits and are established to provide a margin of safety in order to protect the receiving water and other features from accidents, spills, unusual events, etc. Specific separation distances are included in 10 CSR 20-8 for minimum design standards of wastewater structures. While wastewater is considered separately from stormwater under this permit, the guides and Chapter 8 distances may remain relevant to requirements under this permit if deemed appropriate by the permittee.

- ✓ Discharge to the watersheds of a Metropolitan No-Discharge Stream (10 CSR 20-7.031 Table F) is authorized by this permit if the discharges are in compliance with 10 CSR 20-7.015(5) and 10 CSR 20-7.031(7). Discharges to these watersheds are authorized for uncontaminated stormwater discharges only.
- ✓ This permit authorizes stormwater discharges which are located in a way to allow water to be released into sinkholes, caves, fissures, or other openings in the ground which could drain into aquifers (except losing streams) per 10 CSR 20-7.015(7). It is the best professional judgment of the permit writer to allow discharges to losing streams as the effluent is stormwater only.
- ✓ This permit authorizes stormwater discharge in the watersheds of Outstanding state Resource Waters (OSRW); Outstanding National Resources Waters (ONRW), which includes the Ozark National Riverways and the National Wild and Scenic Rivers System; and impaired waters as designated in the 305(b) report, including the 303(d), list so long as no degradation of water quality occurs in the OSRW and ONRW due to discharges from the permitted facility per 10 CSR 20-7.015(6)(B) and 10 CSR 20-7.031(3)(C).

Additionally, if the facility is found to be causing degradation or contributing to an impairment by discharging a pollutant of concern during an inspection or through complaint investigations, they will be required to become a no discharge facility or obtain a site specific permit with more stringent monitoring and SWPPP requirements. Missouri's impaired waters can be found at <https://dnr.mo.gov/water/what-were-doing/water-planning/quality-standards-impaired-waters-total-maximum-daily->

[loads/impaired-waters](#). Sites within 1000 feet of a OSRW, ONRW, or water impaired for sediment must operate as a no-discharge facility. These additional protections are borrowed from the USEPA 2021 draft Construction General Permit.

SLUDGE – DOMESTIC BIOSOLIDS:

Biosolids are solid materials resulting from domestic wastewater treatment meeting federal and state criteria for beneficial use (i.e. fertilizer). Sewage sludge is solid, semi-solid, or liquid residue generated during the treatment of domestic sewage in a treatment works; including, but not limited to, domestic septage; scum or solids removed in primary, secondary, or advanced wastewater treatment process; and material derived from sewage sludge. Sewage sludge does not include ash generated during the firing of sewage sludge in a sewage sludge incinerator or grit and screening generated during preliminary treatment of domestic sewage in a treatment works.

✓ This permit does not authorize discharge or land application of biosolids. Sludge/biosolids is not generated by this industry.

SLUDGE – INDUSTRIAL:

Industrial sludge is solid, semi-solid, or liquid residue generated during the treatment of industrial process wastewater in a treatment works; including, but not limited to, scum or solids removed in primary, secondary, or advanced wastewater treatment process; scum and solids filtered from water supplies and backwashed; and a material derived from industrial sludge.

✓ Not applicable; sludge is not generated by this industry.

SPILL REPORTING:

Any emergency involving a hazardous substance must be reported to the Department's 24 hour Environmental Emergency Response hotline at (573) 634-2436 at the earliest practicable moment after discovery. The Department may require the submittal of a written report detailing measures taken to clean up a spill. These reporting requirements apply when the spill results in chemicals or materials leaving the permitted property or reaching waters of the state. This requirement is in addition to the noncompliance reporting requirement found in Standard Conditions Part I. <https://dnr.mo.gov/waste-recycling/investigations-cleanups/environmental-emergency-response>.

Underground and above ground storage devices for petroleum products, vegetable oils, and animal fats may be subject to control under federal Spill Prevention, Control, and Countermeasure Regulation and are expected to be managed under those provisions, if applicable. Substances regulated by federal law under the Resource Conservation and Recovery Act (RCRA) or the Comprehensive Environmental Response, Compensation, and Liability Act (CERCLA) which are transported, stored, or used for maintenance, cleaning or repair shall be managed according to the provisions of RCRA and CERCLA.

STORMWATER POLLUTION PREVENTION PLAN (SWPPP):

In accordance with 40 CFR 122.44(k), BMPs must be used to control or abate the discharge of pollutants when: 1) Authorized under section 304(e) of the Clean Water Act (CWA) for the control of toxic pollutants and hazardous substances from ancillary industrial activities; 2) Authorized under section 402(p) of the CWA for the control of stormwater discharges; 3) Numeric effluent limitations are infeasible; or 4) the practices are reasonably necessary to achieve effluent limitations and standards or to carry out the purposes and intent of the CWA. In accordance with the EPA's *Developing Your Stormwater Pollution Prevention Plan: A Guide for Construction Sites*, (Document number EPA 833-R-06-004) published by the EPA in 2007 https://www.epa.gov/sites/production/files/2015-10/documents/sw_swppp_guide.pdf, BMPs are measures or practices used to reduce the amount of pollution entering waters of the state from a permitted facility. BMPs may take the form of a process, activity, or physical structure. Additionally, in accordance with the Stormwater Management, a SWPPP is a series of steps and activities to 1) identify sources of pollution or contamination, and 2) select and carry out actions which prevent or control the pollution of storm water discharges. Additional information can be found in *Stormwater Management for Industrial Activities: Developing Pollution Prevention Plans and Best Management Practices* (EPA 832-R-92-006; September 1992).

A SWPPP must be prepared if the SIC code for the facility is found in 40 CFR 122.26(b)(14) and/or 10 CSR 20-6.200(2). A SWPPP may be required of other facilities where stormwater has been identified as necessitating better management. The purpose of a SWPPP is to comply with all applicable stormwater regulations by creating an adaptive management plan to control and mitigate stream pollution from stormwater runoff. Developing a SWPPP provides opportunities to employ appropriate BMPs to minimize the risk of pollutants being discharged during storm events. The following paragraph outlines the general steps the permittee should take to determine which BMPs will work to achieve the benchmark values or limits in the permit. This section is not intended to be all encompassing or restrict the use of any physical BMP or operational and maintenance procedure assisting in pollution control. Additional steps or revisions to the SWPPP may be required to meet the requirements of the permit.

Areas which should be included in the SWPPP are identified in 40 CFR 122.26(b)(14). Once the potential sources of stormwater pollution have been identified, a plan should be formulated to best control the amount of pollutant being released and discharged by each activity or source. This should include, but is not limited to, minimizing exposure to stormwater, good housekeeping measures, proper facility and equipment maintenance, spill prevention and response, vehicle traffic control, and proper materials handling. Once a plan has been developed, the facility will employ the control measures determined to be adequate to prevent pollution from entering waters of the state. The facility will conduct inspections of the BMPs to ensure they are working properly and re-evaluate any BMP

not achieving compliance with permitting requirements. For example if the BMP being employed is deficient in controlling stormwater pollution, corrective action should be taken to repair, improve, or replace the failing BMP. If failures do occur, continue this trial and error process until appropriate BMPs have been established.

The EPA has developed factsheets on the pollutants of concern for specific industries along with the BMPs to control and minimize stormwater (<https://www.epa.gov/npdes/stormwater-discharges-industrial-activities>). Along with EPA's factsheets, the International Stormwater BMP database (<https://bmpdatabase.org/>) may provide guidance on BMPs appropriate for specific industries.

For new, altered, or expanded stormwater discharges, the SWPPP shall identify reasonable and effective BMPs while accounting for environmental impacts of varying control methods. The antidegradation analysis must document why no discharge or no exposure options are not feasible. The selection and documentation of appropriate control measures shall serve as an alternative analysis of technology and fulfill the requirements of antidegradation [10 CSR 20-7.031(3)].

Alternative analysis evaluation of the BMPs is a structured evaluation of BMPs which are reasonable and cost effective. The alternative analysis evaluation should include practices designed to be: 1) non-degrading; 2) less degrading; or 3) degrading water quality. The glossary of the *Antidegradation Implementation Procedure* defines these three terms. The chosen BMP will be the most reasonable and effective management strategy while ensuring the highest statutory and regulatory requirements are achieved and the highest quality water attainable for the facility is discharged. The alternative analysis evaluation must demonstrate why "no discharge" or "no exposure" is not a feasible alternative at the facility. This structured analysis of BMPs serves as the antidegradation review, fulfilling the requirements of 10 CSR 20-7.031(3) Water Quality Standards and *Antidegradation Implementation Procedure*, Section II.B.

- ✓ Applicable: A SWPPP shall be developed and implemented for each site and shall incorporate required practices identified by the Department with jurisdiction, incorporate control practices specific to site conditions, and provide for maintenance and adherence to the plan.

UNDERGROUND INJECTION CONTROL (UIC):

The UIC program for all classes of wells in the State of Missouri is administered by the Missouri Department of Natural Resources and approved by EPA pursuant to section 1422 and 1425 of the Safe Drinking Water Act (SDWA) and 40 CFR 147 Subpart AA. Injection wells are classified based on the liquids which are being injected. Class I wells are hazardous waste wells which are banned by RSMo 577.155; Class II wells are established for oil and natural gas production; Class III wells are used to inject fluids to extract minerals; Class IV wells are also banned by Missouri in RSMo 577.155; Class V wells are shallow injection wells; some examples are heat pump wells and groundwater remediation wells. Domestic wastewater being disposed of sub-surface is also considered a Class V well. In accordance with 40 CFR 144.82, construction, operation, maintenance, conversion, plugging, or closure of injection wells shall not cause movement of fluids containing any contaminant into Underground Sources of Drinking Water (USDW) if the presence of any contaminant may cause a violation of drinking water standards or groundwater standards under 10 CSR 20-7.031 or other health-based standards or may otherwise adversely affect human health. If the Department finds the injection activity may endanger USDWs, the Department may require closure of the injection wells or other actions listed in 40 CFR 144.12(c), (d), or (e). In accordance with 40 CFR 144.26, the permittee shall submit a Class V Well Inventory Form for each active or new underground injection well drilled, or when the status of a well changes, to the Missouri Department of Natural Resources, Geological Survey Program, P.O. Box 250, Rolla, Missouri 65402. Single family residential septic systems and non-residential septic systems used solely for sanitary waste and having the capacity to serve fewer than 20 persons a day are excluded from the UIC requirements (40 CFR 144.81(9)).

- ✓ Not applicable; this permit does not authorize subsurface wastewater systems or other underground injection. These activities must be assessed under an application for a site specific permit. Certain discharges of stormwater into sinkholes may qualify as UIC. It is important the permittee evaluate all stormwater basins, even those holding water; as sinkholes have varying seepage rates. This permit does not allow stormwater discharges into sinkholes. The facility must ensure sinkholes are avoided in the construction process. The State's online mapping resource <https://modnr.maps.arcgis.com/apps/webappviewer/index.html?id=87ebef4af15d438ca658ce0b2bbc862e> has a sinkhole layer.

VARIANCE:

Per the Missouri Clean Water Law Section 644.061.4, variances shall be granted for such period of time and under such terms and conditions as shall be specified by the commission in its order. The variance may be extended by affirmative action of the commission. In no event shall the variance be granted for a period of time greater than is reasonably necessary for complying with the Missouri Clean Water Law Section 644.006 to 644.141 or any standard, rule, or regulation promulgated pursuant to Missouri Clean Water Law Section 644.006 to 644.141.

- ✓ Not Applicable: This permit is not drafted under premises of a petition for variance.

WASTELOAD ALLOCATIONS (WLA) FOR LIMITATIONS:

Per 10 CSR 20-2.010(78), the amount of pollutant each discharger is allowed by the Department to release into a given stream after the Department has determined total amount of pollutant which may be discharged into the stream without endangering its water quality. Water quality based maximum daily and average monthly effluent limitations were calculated using methods and procedures

outlined in USEPA's Technical Support Document For Water Quality-based Toxics Control (TSD) (EPA/505/2-90-001).

✓ Not applicable; water quality limitations were not applied in this permit.

WATER QUALITY STANDARDS:

Per 10 CSR 20-7.031(4), General Criteria shall be applicable to all waters of the state at all times, including mixing zones. Additionally, 40 CFR 122.44(d)(1) directs the Department to include in each NPDES permit conditions to achieve water quality established under Section 303 of the CWA, including state narrative criteria for water quality.

WHOLE EFFLUENT TOXICITY (WET) TEST:

Per 10 CSR 20-7.031(1)(FF), a toxicity test conducted under specified laboratory conditions on specific indicator organism; and per 40 CFR 122.2, the aggregate toxic effect of an effluent measured directly by a toxicity test. A WET test is a quantifiable method of determining if a discharge from a facility may be causing toxicity to aquatic life by itself, in combination with, or through synergistic responses when mixed with receiving water.

✓ Not applicable: At this time, permittees are not required to conduct a WET test. This permit is for stormwater only.

PART IV – EFFLUENT LIMITATIONS DETERMINATION

EPA Construction General Permit (CGP)

The CGP was used to research and support best professional judgment decisions made in establishing technology-based conditions for this general permit which are consistent with national standards. The permit writer determined the standards established by the CGP are achievable and consistent with federal regulations. Additionally, the conditions reflecting the best practicable technology currently available are utilized to implement the ELG.

In this general permit, technology-based effluent conditions are established through the SWPPP and BMP requirements. Effective BMPs should be designed on a site-specific basis. The implementation of inspections provides a tool for each facility to evaluate the effectiveness of BMPs to ensure protection of water quality. Any flow through an outfall is considered a discharge. Future permit action due to permit modification may contain new operating permit terms and conditions which supersede the terms and conditions, including effluent limitations, of this operating permit.

PART V – REPORTING REQUIREMENTS

SAMPLING:

The permittee is not required to sample stormwater under this permit. The Department may require sampling and reporting as a result of illegal discharges, compliance issues related to water quality concerns or BMP effectiveness, or evidence of off-site impacts from activities at the facility. If such an action is needed, the Department will specify in writing the sampling requirements, including such information as location and extent. If the permittee refuses to perform sampling when required, the Department may terminate the general permit and require the facility to obtain a site-specific permit with sampling requirements.

REPORTING:

There are no reporting requirements for MO-RAXxxx land disturbance permits. Land disturbance information is best reviewed on an as requested basis and this permit established documents requirements that allow the Department to request and receive needed documentation prior to, during, or after site inspections.

PART VI – RAINFALL VALUES FOR MISSOURI & SURFACE WATER BUFFER ZONES

Knowledge of the 2-year, 24-hour storm event is used in this permit for two main reasons:

- 1) The design, installation, and maintenance of effective erosion and sediment controls to minimize the discharge of pollutants. These erosion and sediment controls must be designed to capture or treat a 2-year, 24-hour storm event. This includes BMPs and, depending on the acreage of the drainage area, sediment basins.
- 2) If the seven-day inspection frequency is utilized, an inspection must occur within 48 hours after any storm event equal to or greater than a 2-year, 24 hour storm has ceased.

A 2-year, 24-hour storm event may be determined in two different ways. For site-specific 2-year, 24-hour storm event information utilize the National Oceanic and Atmospheric Administration's National Weather Service Atlas 14 (NOAA Atlas 14) which is located at https://hdsc.nws.noaa.gov/hdsc/pfds/pfds_map_cont.html. This is the most accurate and preferred method for determining the 2-

year, 24-hour storm event. In general, this will be the least stringent method. For more information visit;
https://www.weather.gov/media/owp/oh/hdsc/docs/Atlas14_Volume8.pdf.

As an alternative to NOAA Atlas 14, a default value may be utilized. The map below provided by the Department represent the most conservative, protective values for default values applicable to Missouri. In general, this will be the most stringent method. This map is based on Technical Paper No. 40 (TP-40). TP-40 provides a map of the continental U.S. for the 2-year, 24-hour storm event. See map below for default values.

Map 1: Default Values for 2-Year, 24-Hour Storm Event for Design of Sediment and Erosion Controls

Legend: Northern Counties (blue): 3.5 inches
Southern Counties (grey): 4 inches



Surface Water Buffer Zones: In order to design controls that match the sediment removal efficiency of a 50-foot buffer, you first need to know what this efficiency is for your site. The sediment removal efficiencies of natural buffers vary according to a number of site-specific factors, including precipitation, soil type, land cover, slope length, width, steepness, and the types of erosion and sediment controls used to reduce the discharge of sediment prior to the buffer. For additional information;
https://www.epa.gov/sites/default/files/2017-02/documents/2017_cgp_final_appendix_g_-_buffer_reqs_508.pdf

PART VII – ADMINISTRATIVE REQUIREMENTS

On the basis of preliminary staff review and applicable standards and regulations, the Department, as administrative agent for the Missouri Clean Water Commission, proposes to issue a permit(s) subject to certain effluent limitations, schedules, and special conditions contained herein and within the permit. The proposed determinations are tentative pending public comment.

PUBLIC MEETING:

The Department hosted three public meetings for this permit. The meetings were held on January 27, February 17, and March 9, 2021.

PUBLIC NOTICE:

The Department shall give public notice when a draft permit has been prepared and its issuance is pending. Additionally, public notice will be issued if a public hearing is to be held because of a significant degree of interest or because of water quality concerns related to a draft permit. No public notice is required when a request for a permit modification or termination is denied; however, the requester and facility must be notified of the denial in writing.

The Department must give public notice of a pending permit or of a new or reissued Missouri State Operating Permit. The public comment period is a length of time not less than thirty (30) days following the date of the public notice, during which interested persons may submit written comments about the proposed permit.

For persons wanting to submit comments regarding this proposed permit, please refer to the Public Notice page located at the front of this draft permit. The Public Notice page gives direction on how and where to submit appropriate comments.

- ✓ The Public Notice period for this permit was held from November 5, 2021 and ends December 6, 2021. Two letters were received during the 30 day Public Notice period. The summarized comments from the letter and the Department's responses to the comments are below and are in reference to the Public Noticed version of this permit. The comments and responses to the Public Notice of this permit do not warrant the modification of the terms and conditions of this permit.

Letter 1:

Comment #1: Numbering on Page 3 - **there are two #2's**

Response: Thank you, this was corrected.

Comment #2: 2. ... If an individual proposes to develop a lot to reside on (**themselves**),

Response: This word has been added to add clarity.

Comment #3: Table on Page 3, I. Applicability Section A, #2. The second row, second column is confusing. This second part seems to imply that lots less than 1 acre but not part of a common plan would need a permit if the lot is to be sold. This seems contrary to the one or more acres required for a permit.

Response: The second part was reworded in effort to clarify. The "or if" was changed to "including" to clarify both situations are part of the common plan and would require a permit.

Comment #4: The first part of this section before the semicolon seems incomplete:

Response: The redundant wording was removed to clarify this condition.

Comment #5: There is no #3.

Response: Thank you, this was corrected.

Comment #6: Number 4. Could the impaired water also be on the 303(d) list? Impaired waters are only on the 305(b) list after they have a TMDL written. What about the streams on the 303(d) list that are waiting for a TMDL?

Response: The 303(d) list is a less-encompassing component of the all-encompassing 305(b) Report. The permit has been edited to state "designated in the 305(b) Report, including the 303(d) list," to emphasizing the 303(d) list.

Comment #7: 10. Change the word States to state

Response: This was corrected.

Comment #8: There are 2 (b)s under #1. 1(c). Part VII. should be Part VIII STANDARD PERMIT CONDITIONS

6. Replace the period with a colon after BMPs. "The permittee shall select, install, use, operate and maintain appropriate BMPs for the permitted site. The following manuals are acceptable resources for the selection of appropriate BMPs:"

Response: These corrections were made.

Comment #9: 11(b) 2 and 3. These are missing periods after the word "holiday"

Response: These corrections were made.

Comment #10: V. BMP Requirements (2) Can you define "dripline"

Response: A longer explanation of "dripline" was added to that condition for clarity.

Comment #11: 11.(c)(2) Is this missing a word after "from". In the phrase "discharge points from" ? Perhaps just remove the word "from". The phrase would read "inlets, outlets, and discharge points shall be utilized."

Response: This correction has been made.

Comment #12: Also, the addition of language related to BMPs discussed on page 5 and 6 of the fact sheet are positive additions to the permit and should help guide protection of waters of the state from sediment.

On the top of page 6 of the fact sheet, it appears there is a typo: " Migration of soil or product from mis-managed **plies**"

Response: This correction has been made.

Letter 2:

Comment #1: Define Outfalls.

Response: Outfalls are points with discharges of stormwater from areas associated with the industrial activity for which the facility is permitted; in this case construction. Discerning if certain drains which leave the site would be considered an outfall or not would be specific to each site, in addition to the specific phase of construction. Outfalls on construction sites are often not stationary. An outfall does not need to be a pipe, it can be a ditch, channel, or other conduit that discharges stormwater off the property, and there is no size constraint to outfalls. A definition has been added to the fact sheet to add clarification.

Comment #2: I. Applicability: A. Permit Coverage and Authorized Discharges – Permit numbering is off.

Response: Thank you, this has been corrected.

Comment #3: I. Applicability: B. Permit Restrictions – Permit numbering is off.

Response: Thank you, this has been corrected.

Comment #4: 4(c) Discharges from dewatering of sedimentation basins is prohibited. Does this mean direct dumping of dewatering material? Are dewatering controls such as sediment bags, infiltration trenches, or buffer strips allowed?

Response: The definition of no-discharge facility found in 10 CSR 20-6.015 includes the condition "To hold or irrigate, or otherwise dispose without discharge to surface or subsurface waters of the state, all process wastes and associated storm water flows except for discharges that are caused by catastrophic and chronic storm events;". Dewatering controls are allowed so long as they are operated so that the dewatered material and water is not discharged to waters of the state.

Comment #5: 4(c) references 10 CSR 20-6.15(1)B(7). Should this be 10 CSR 20-6.015(1)B(7)?

Response: This has been corrected, thank you.

Comment #6: Could the department please clarify what is meant by a "catastrophic event" referenced in this regulation? The

permit design standards are for the 2-year, 24-hour storm.

Response: Catastrophic storm is defined in 10 CSR 20-6.015(1)(B)2 as “A precipitation event of twenty-four (24)-hour duration or less that exceeds the twenty-five (25)-year, twenty-four (24)-hour storm event.” A chronic storm event is defined in 10 CSR 20-6.015(1)(B)3 as “A precipitation event with a duration of more than twenty-four (24) hours that exceeds the one-in-ten (1 in 10)-year return frequency.”

This information is found on the National Oceanic and Atmospheric Administration’s National Weather Service Atlas 14. A link can be found in the permit part **III. REQUIREMENTS** 4.

Comment #7: IV. SWPPP Management Requirements 1. Multilevel numbering is off.

Response: This has been corrected, thank you.

Comment #8: VIII. Standard Permit Conditions 2. Land Ownership and Change of Ownership 2(c) – Please clarify if an individual needs a land disturbance permit for their personal residence if the portion of land sold is equal to or greater than one acre, as it states in the proposed permit, or only if they will be disturbing one acre or greater.

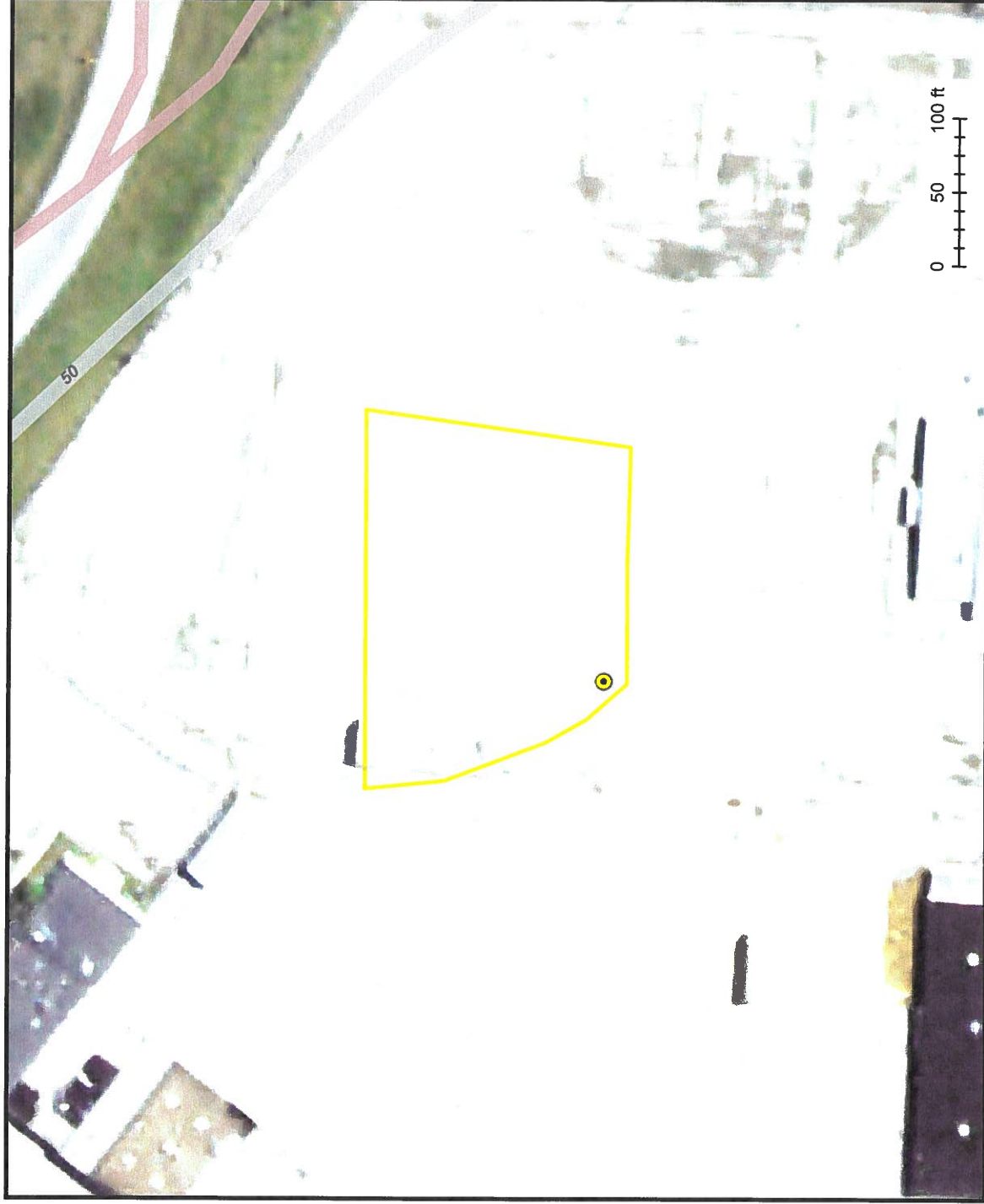
Response: The word ‘disturbed’ has been included in this portion to add clarity.

DATE OF FACT SHEET: 10/13/2021

COMPLETED BY:

SARAH WRIGHT
ENVIRONMENTAL SPECIALIST
MISSOURI DEPARTMENT OF NATURAL RESOURCES
WATER PROTECTION PROGRAM
OPERATING PERMITS SECTION - STORMWATER AND CERTIFICATION UNIT
(573) 526-1139
Sarah.wright@dnr.mo.gov, dnr.generalpermits@dnr.mo.gov

DNR_Landscape



Legend

- Land Disturbance Point
- Land Disturbance Area
- 12 Digit Watershed Boundaries
- Impaired Streams - 303(d)
- Impaired Lakes - 303(d)
- Stream Classifications and Use Designations
- Lake Classifications and Use Designations
- Public Land Survey System
- Interstates and U.S. highways
- State numbered routes
- State lettered routes
- ramps
- Major roads
- Minor roads
- Railroads
- County Boundaries
- Lake or Pond
- Lake or Pond / Intermittent
- Lake or Pond / Perennial
- Reservoir
- Swamp or Marsh
- Other; Artificial Path
- Canal or Ditch
- Stream or River
- Stream or River / Intermittent
- Stream or River / Perennial
- Municipalities Boundary
- Municipalities Fill

Printed: November 18, 2025

Disclaimer: Although this map has been compiled by the Missouri Department of Natural Resources, no warranty, expressed or implied, is made by the department as to the accuracy of the data and related materials. The act of distribution shall not constitute any such warranty, and no responsibility is assumed by the department in the use of these data or related materials.



MISSOURI
DEPARTMENT OF
NATURAL RESOURCES

STORMWATER DISCHARGES FROM
THIS LAND DISTURBANCE SITE ARE
AUTHORIZED BY THE MISSOURI
STATE OPERATING PERMIT NUMBER:

ANYONE WITH QUESTIONS OR
CONCERNS ABOUT STORMWATER
DISCHARGES FROM THIS SITE,
PLEASE CONTACT THE MISSOURI
DEPARTMENT OF NATURAL
RESOURCES AT

1-800-361-4827



MISSOURI DEPARTMENT OF NATURAL RESOURCES

Division of Environmental Quality Regional Offices

Kansas City Area

- Kansas City Regional Office**
500 NE Colbern Rd.
Lee's Summit, MO 64086-4710
816-251-0700 FAX: 816-622-7044

St. Louis Area

- St. Louis Regional Office**
7545 S. Lindbergh, Ste 210
St. Louis, MO 63125
314-416-2960 FAX: 314-416-2970

Northeast Area

- Northeast Regional Office**
1709 Prospect Drive
Macon, MO 63552-2602
660-385-8000 FAX: 660-385-8090

Southwest Area

- Southwest Regional Office**
2040 W. Woodland
Springfield, MO 65807-5912
417-891-4300 FAX: 417-891-4399

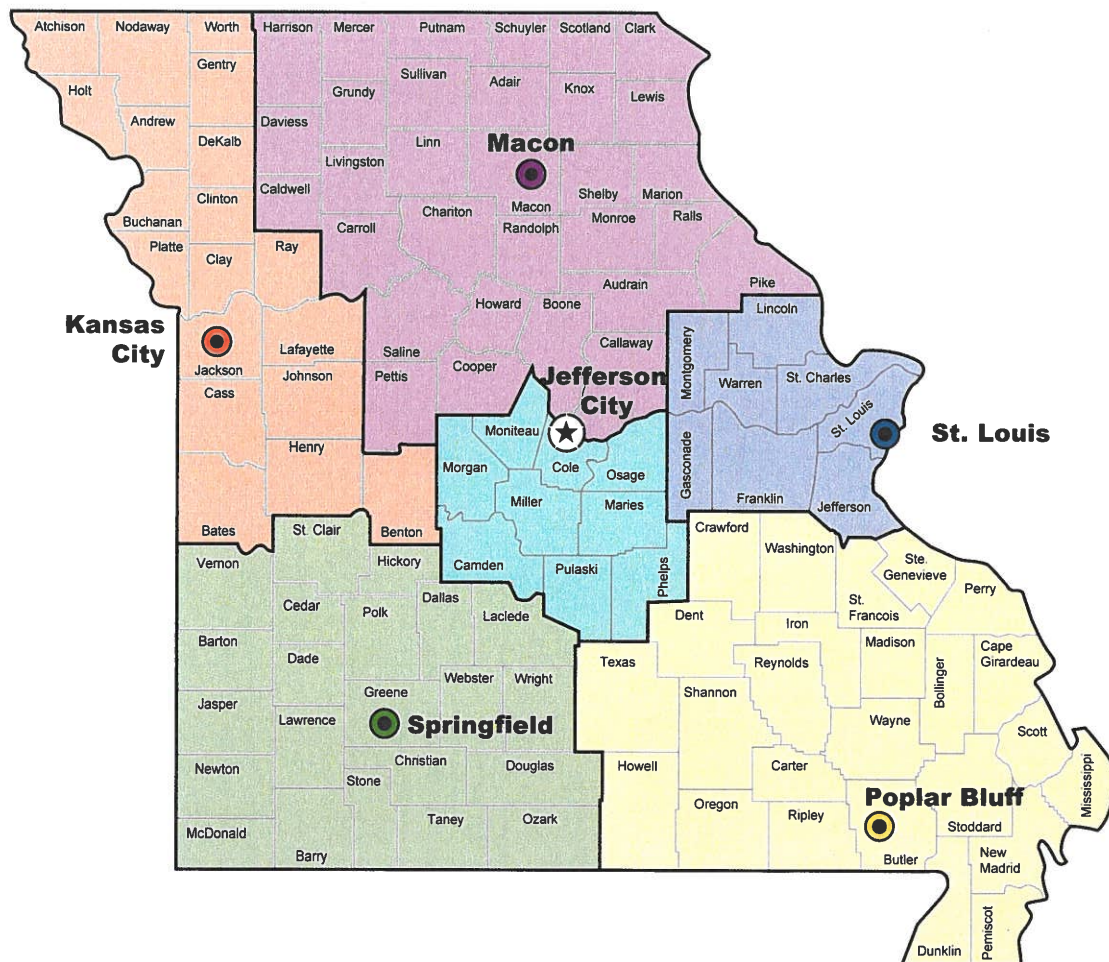
Southeast Area

- Southeast Regional Office**
2155 North Westwood Blvd.
Poplar Bluff, MO 63901
573-840-9750 FAX: 573-840-9754

Central Area

- Department Central Offices**
P.O. Box 176
Jefferson City, MO 65102-0176
573-751-3443

Central Field Operations
P.O. Box 176
Jefferson City, MO 65102-0176
573-522-3322 FAX: 573-522-3522



Appendix B
Construction Activity Record

Construction Activity Record

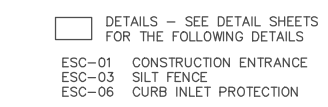
An accurate and up-to-date record of construction activity must be maintained as a part of this Plan. Record the information below on an ongoing basis.

- Dates when major soil disturbing activities occur
- Dates when construction activities temporarily cease on a portion of the site
- Dates when construction activities permanently cease on a portion of the site
- Dates when stabilization measures are initiated

[illegible]

Appendix C
Completed Inspection Forms

Appendix D
Erosion Control Sheets

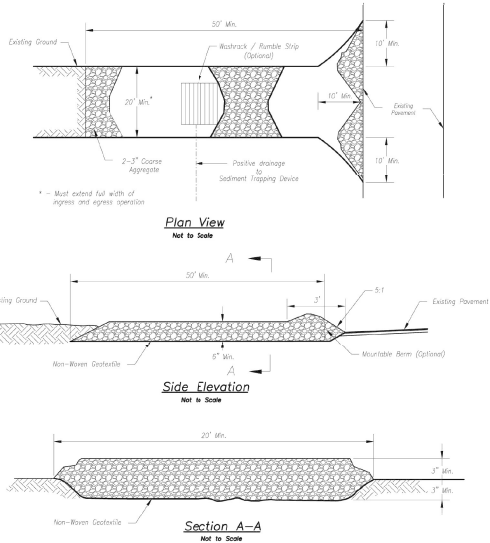


---1218--- 1' CONTOUR INTERVALS PER OLDDHAM VILLAGE PHASE I PLANS
 [1027] FINISHED 1' CONTOUR INTERVALS, TOP OF PAVEMENT
 ■■■ SILT FENCE
 ■■■ INLET PROTECTION

- SMALLS SLIDERS**
SW JEFFERSON CROSSING
LEE'S SUMMIT, MISSOURI

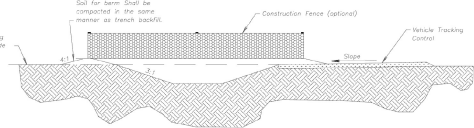
PROJ. NO.		A25D2009	
DESIGNER		DRAWN BY	
RCP		JP	
CFN			
2009ECP			
SHEET		REV	
C-7		0	





- Notes for Concrete Washout:**
- Concrete washout areas shall be installed prior to any concrete placement on site.
 - Concrete washout area shall include a flat subsurface pit sized relative to the amount of concrete to be placed on site. The slope leading out of the subsurface pit shall be 3:1. The vehicle tracking post shall be placed beneath the concrete washout area.
 - Vehicle tracking control is required of the access point to all concrete washout areas.
 - Signs shall be placed at the construction site entrance, washout area and elsewhere as necessary to clearly indicate the location(s) of the concrete washout area(s) to operators of concrete truck and pump rigs.
 - A one-way impervious liner may be required along the bottom and sides of the subsurface pit in sandy or gravelly soils.

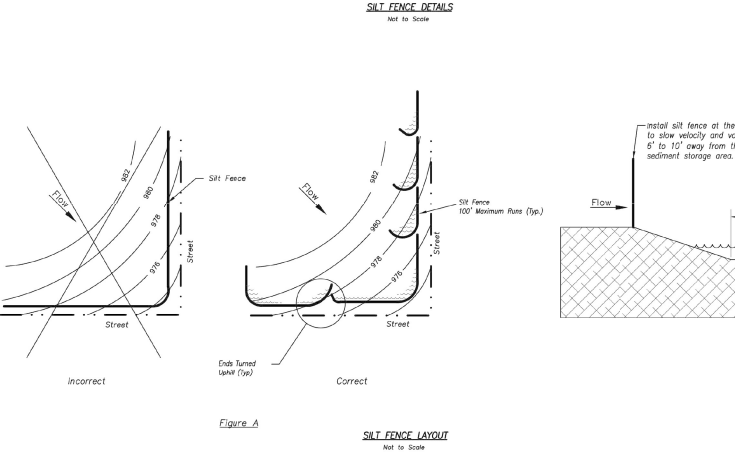
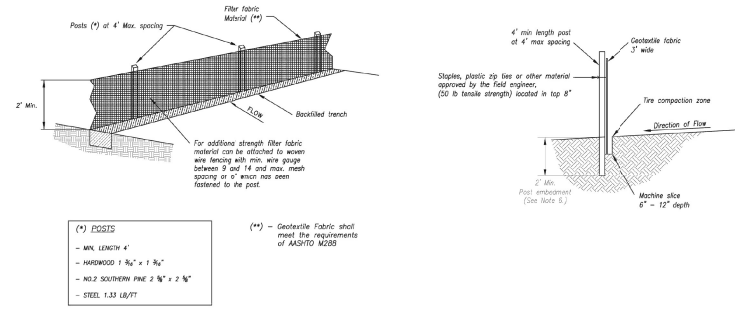
- Maintenance for Concrete Washout:**
- Concrete washout materials shall be removed once the materials have filled the washout to approximately 75% full.
 - Concrete washout areas shall be enlarged as necessary to maintain capacity for washed concrete.
 - Concrete washout water, wasted pieces of concrete and all other debris in the subsurface pit shall be transported from the job site in a water-tight container and disposed of properly.
 - Concrete washout areas shall remain in place until all concrete for the project is placed.
 - When concrete washout areas are removed, excavations shall be filled with suitable compacted backfill and topped, any disturbed areas associated with the installation, maintenance, and/or removal of the concrete washout areas shall be stabilized.



CONCRETE WASHOUT

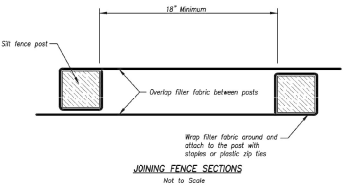
AMERICAN PUBLIC WORKS ASSOCIATION	
KANSAS CITY METRO CHAPTER	
CONSTRUCTION ENTRANCE AND CONCRETE WASHOUT	STANDARD DRAWING NUMBER ESC-01 ADOPTED: 10/24/2016

Construction Entrance modified from 2015 Overland Park Standard Details for Erosion and Sediment Control, Concrete Washout modified from 2009 City of Great Bend Standard Drawings.



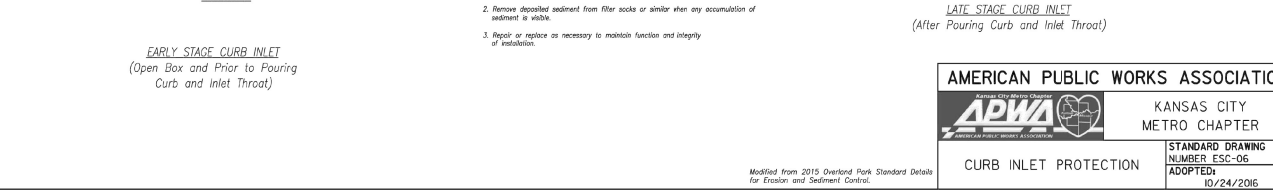
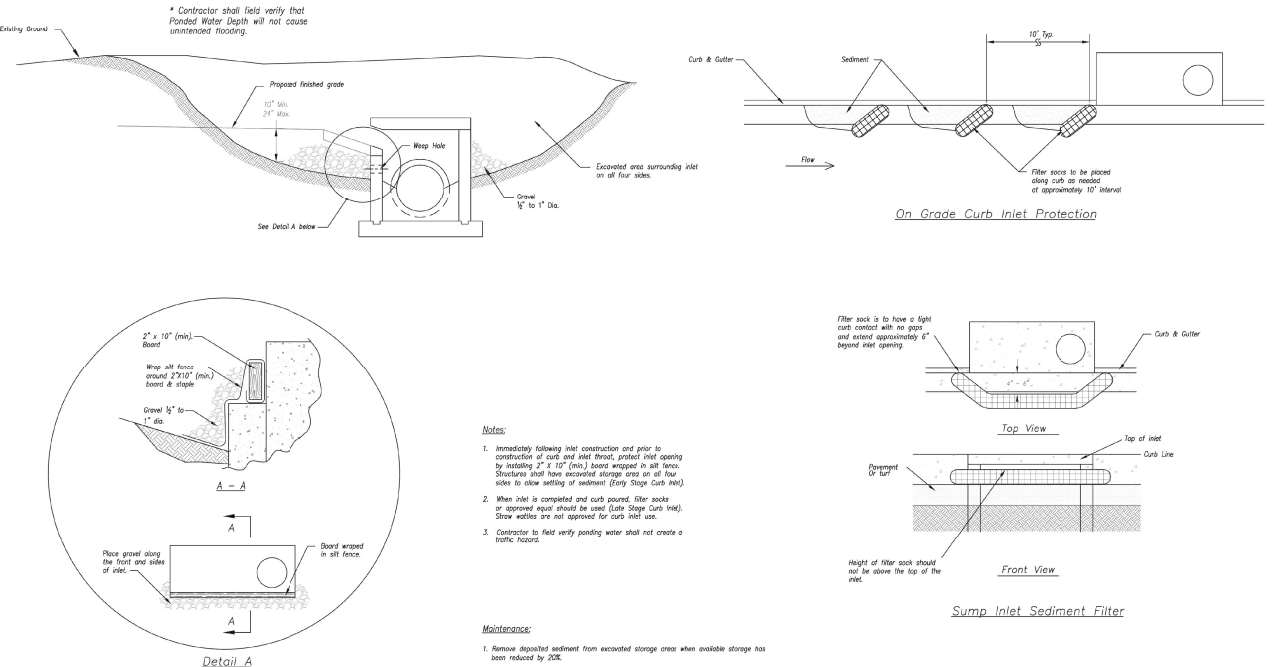
- Notes:**
- In order to contain water, the ends of the silt fence must be turned uphill (Figure A).
 - Long perimeter runs of silt fence must be limited to 100'. Runs should be broken up into several smaller segments to minimize water concentrations (Figure A).
 - Long slopes should be broken up with intermediate runs of silt fence to slow runoff velocities.
 - Attach fabric to upstream side of post.
 - Install posts a minimum of 2' into the ground.
 - Trenching will only be allowed for small or difficult installation, where staking machine cannot be reasonably used.

- Maintenance:**
- Remove and dispose of sediment deposits when the deposit approaches 1/2 the height of silt fence.
 - Repair as necessary to maintain function and structure.



AMERICAN PUBLIC WORKS ASSOCIATION	
KANSAS CITY METRO CHAPTER	
SILT FENCE	STANDARD DRAWING NUMBER ESC-03 ADOPTED: 10/24/2016

Modified from 2015 Overland Park Standard Details for Erosion and Sediment Control.



- Notes:**
- Immediately following inlet construction and prior to construction of curb and inlet throat, protect inlet opening by installing 2' x 10' (min.) board wrapped in silt fence. Structures shall have excavated storage area on all four sides to allow settling of sediment (Early Stage Curb Inlet).
 - When inlet is completed and curb poured, filter socks or approved silt sock should be used (Late Stage Curb Inlet). Straw wattles are not approved for curb inlet use.
 - Contractor to field verify ponding water shall not create a traffic hazard.

- Maintenance:**
- Remove deposited sediment from excavated storage areas when available storage has been reduced by 20%.
 - Remove deposited sediment from filter socks or similar when any accumulation of sediment is visible.
 - Repair or replace as necessary to maintain function and integrity of installation.

AMERICAN PUBLIC WORKS ASSOCIATION	
KANSAS CITY METRO CHAPTER	
CURB INLET PROTECTION	STANDARD DRAWING NUMBER ESC-06 ADOPTED: 10/24/2016

Modified from 2015 Overland Park Standard Details for Erosion and Sediment Control.

Appendix E
SWPPP Modification Form

Storm Water Pollution Prevention Plan (SWPPP) Modification Form

Modifications to the Storm Water Pollution Prevention Plan (SWPPP)

This form is to be completed for any additions, deletions, or modifications to the SWPPP with the exception of those items classified as being insignificant. For insignificant changes, the SWPPP plan shall be redlined, dated, and initialed by the Engineer. All other changes shall be documented using this form. This form will serve as the record, as required by the General Permit, for such changes. This form shall become part of and accompany the SWPPP. The SWPPP plan sheets shall be redlined or updated plan sheets showing the changes shall be attached to this document.

The following items are classified as insignificant changes:

1. Tracking station realignment and/or relocation based on site conditions and actual field use.
2. Erosion Control barrier realignment and/or relocation to better fit the actual contours on site.
3. Silt fence relocation to improve performance based on site conditions.
4. Interchangeable approved inlet protection BMPs.
5. Relocation of stockpile location and/or material storage areas.
6. Removal of inlet protection during approved winter time periods if alternate sediment control measures are employed.
7. Temporary removal of minor sediment barriers that may conflict with certain phases of construction activities.
8. Extension of the one month use of surface roughening as an erosion control measure.
9. Relocation of concrete washout area.
10. Modifications of construction schedules may be made so long as the appropriate BMP's are in place.

BMP Type (see table below)	Approximate Station		Left or Right of Centerline	Description
	From	To		

Table of BMP Types
Add others as needed

1	Temporary Seeding	8	Rock Check Dam	15	Concrete Washout	22	Wattles
2	Permanent Sod or Seed	9	Diversion Dike	16	Silt Ditch	23	Slope Drain
3	Mulch	10	Diversion Swale	17	Slope Diversion Dike	24	
4	Sediment Basin	11	Inlet Protection	18	Filter Strips	25	
5	Erosion Control Blanket	12	Vehicle Tracking Station	19	Sediment Trap	26	
6	Silt Fence	13	Surface Roughening	20	Channel Diversion	27	
7	Rip Rap	14	WIMCO Unit	21	Outlet Protection	28	

Modification to the Storm Water Pollution Prevention Plan (SWPPP) Acknowledgement

The Engineer hereby directs the Contractor to incorporate these modifications into the SWPPP.

Print Name Representing Signature Date

☐ The Contractor has been verbally notified of these modifications. _____
Date & Time

Original to SWPPP

Copy to Principal Construction Engineer, Contractor, and Project Manager

Appendix F
SWPPP Project Rainfall Log

YEAR 20_____

[illegible]