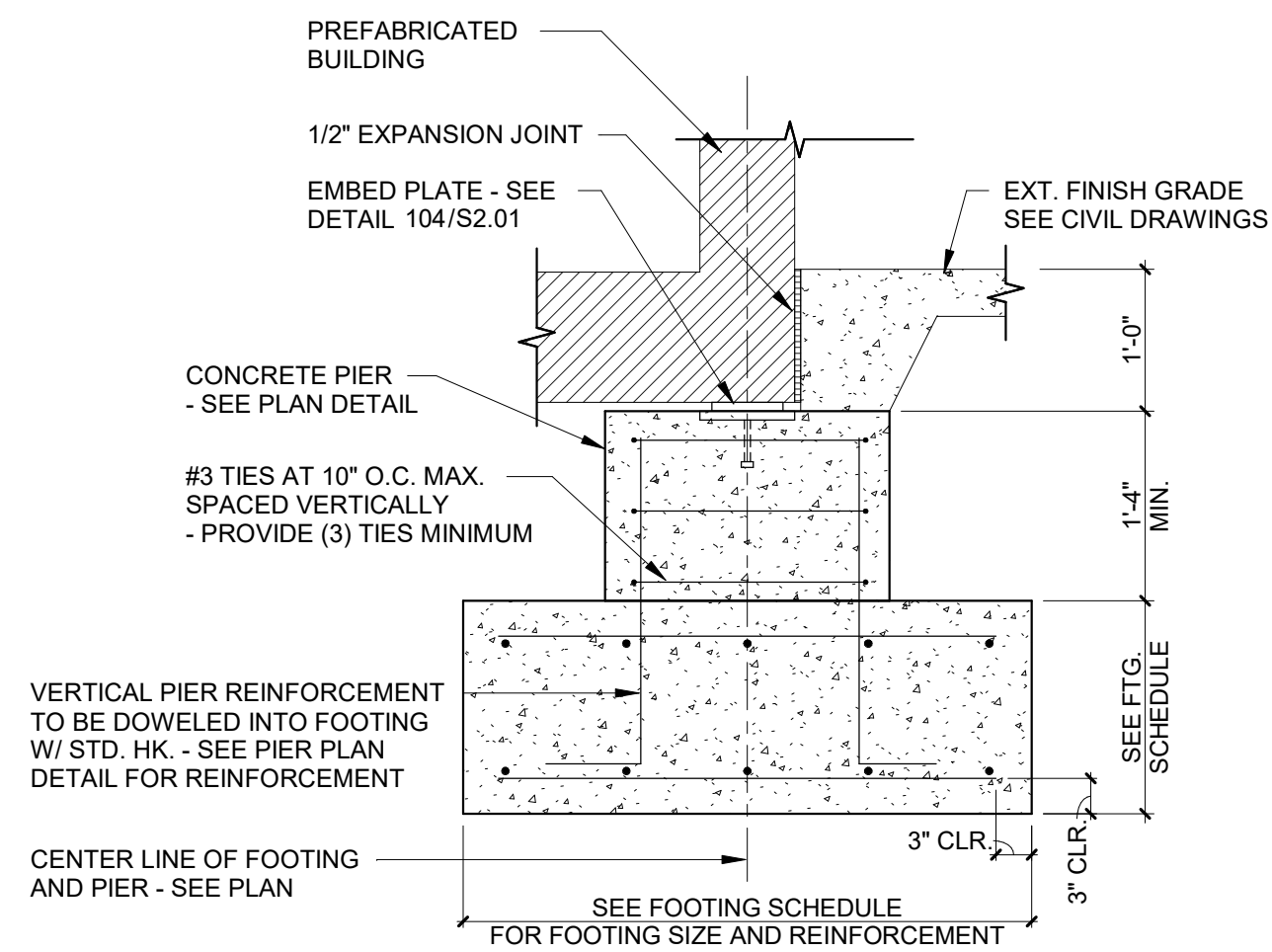
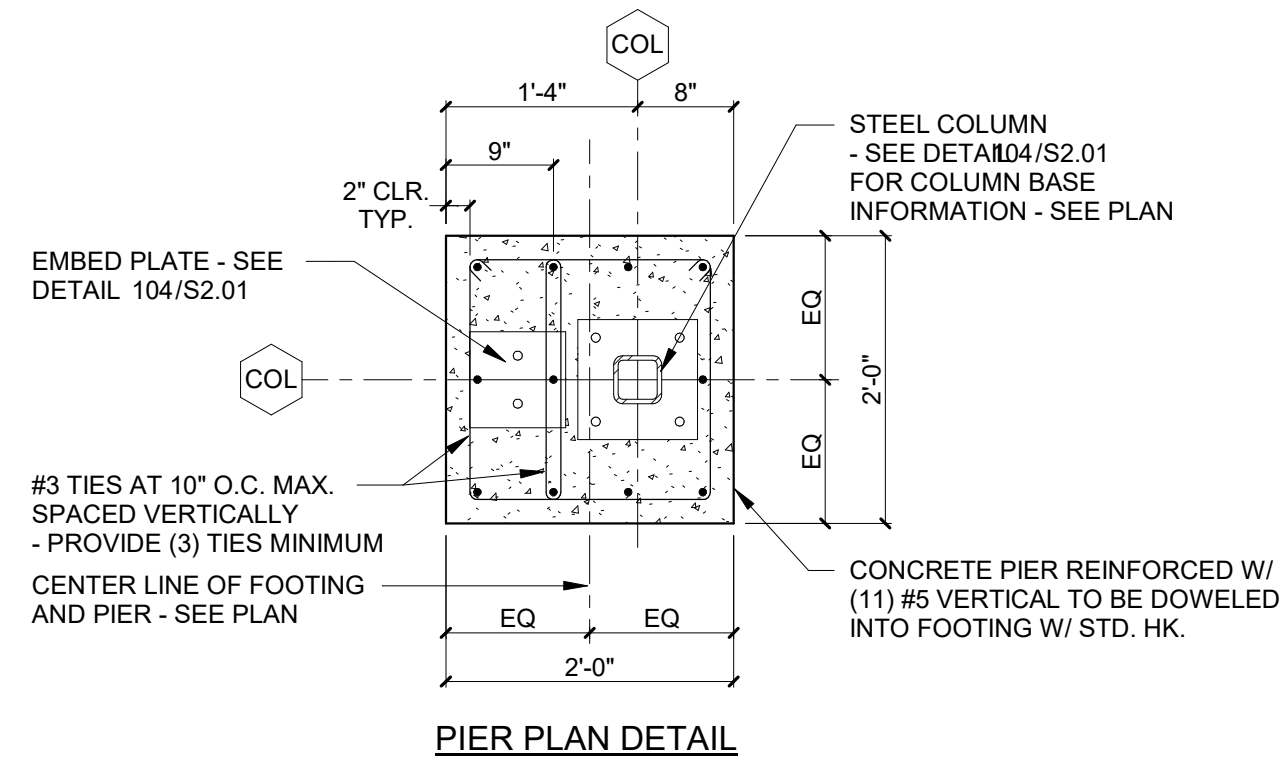


PIER PLAN DETAIL

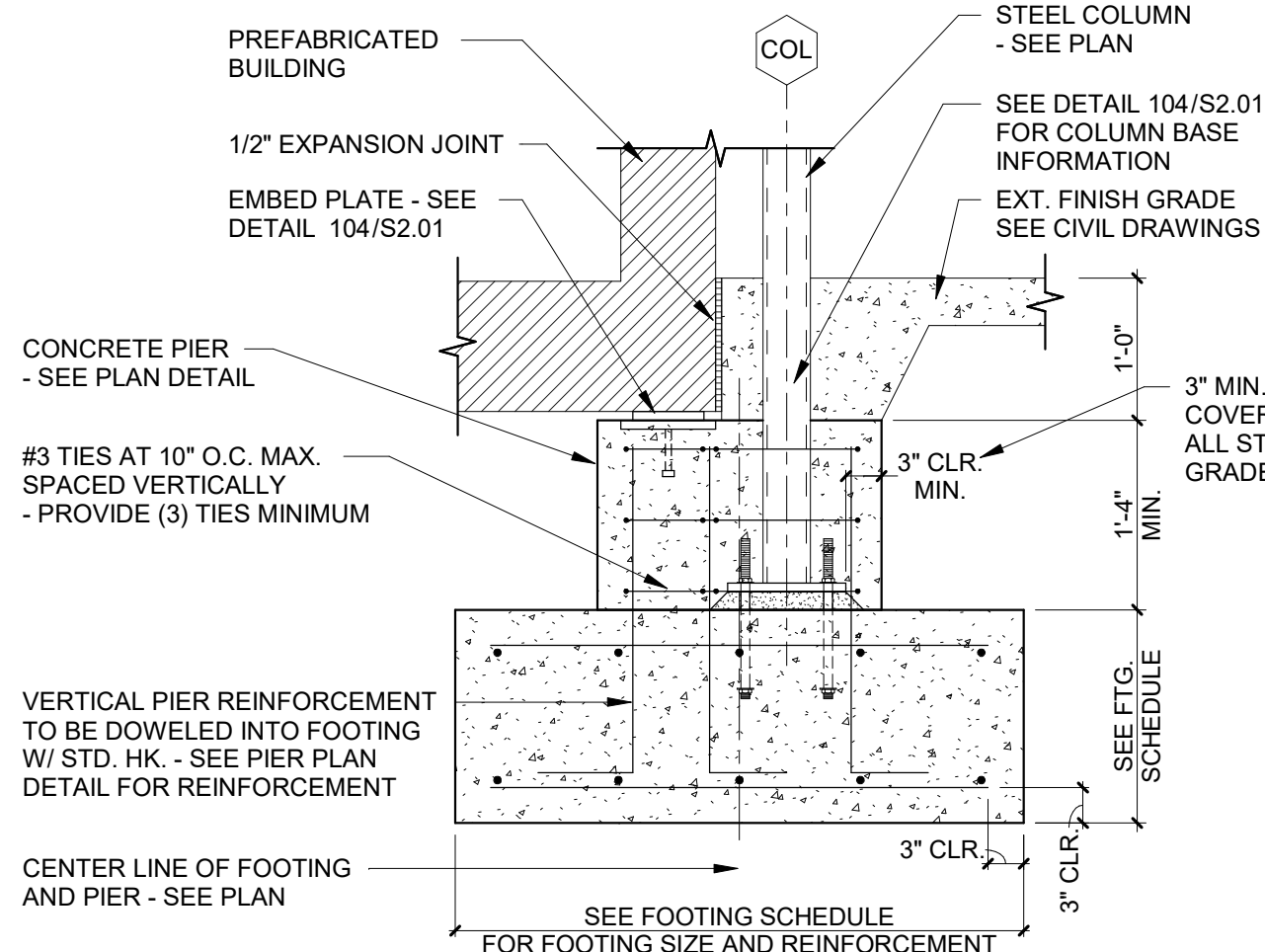


COLUMN PIER AND FOOTING DETAIL

101

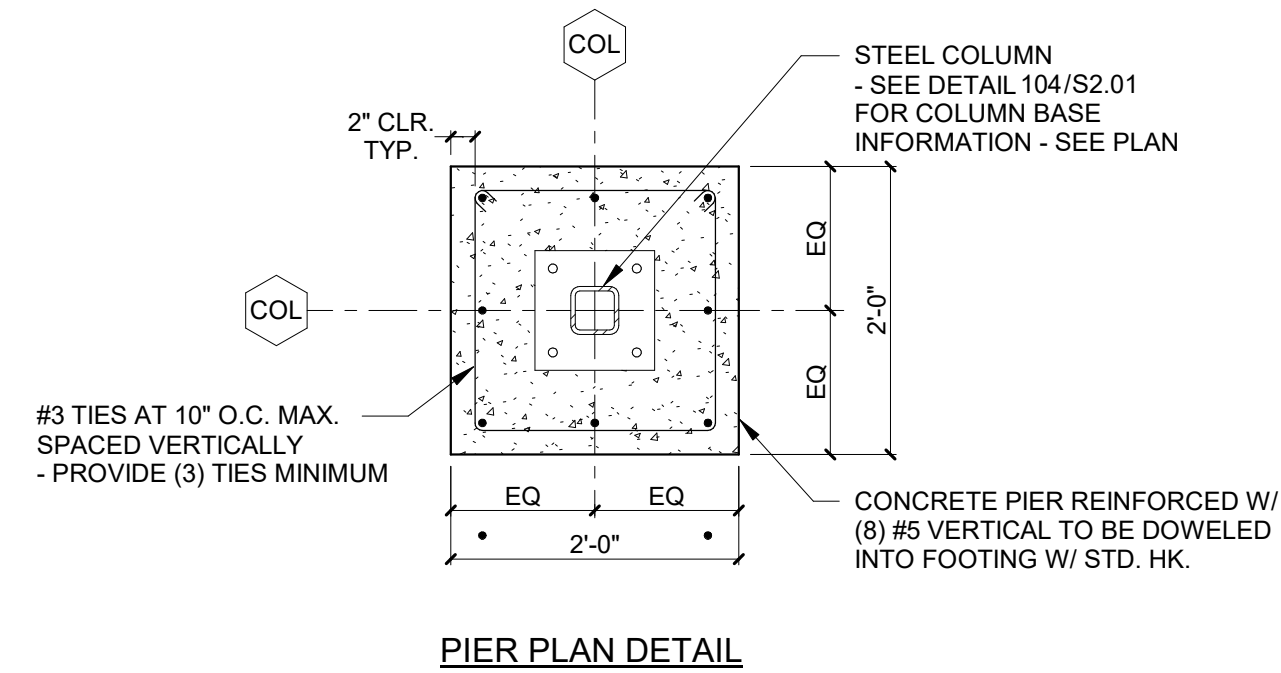


PIER PLAN DETAIL

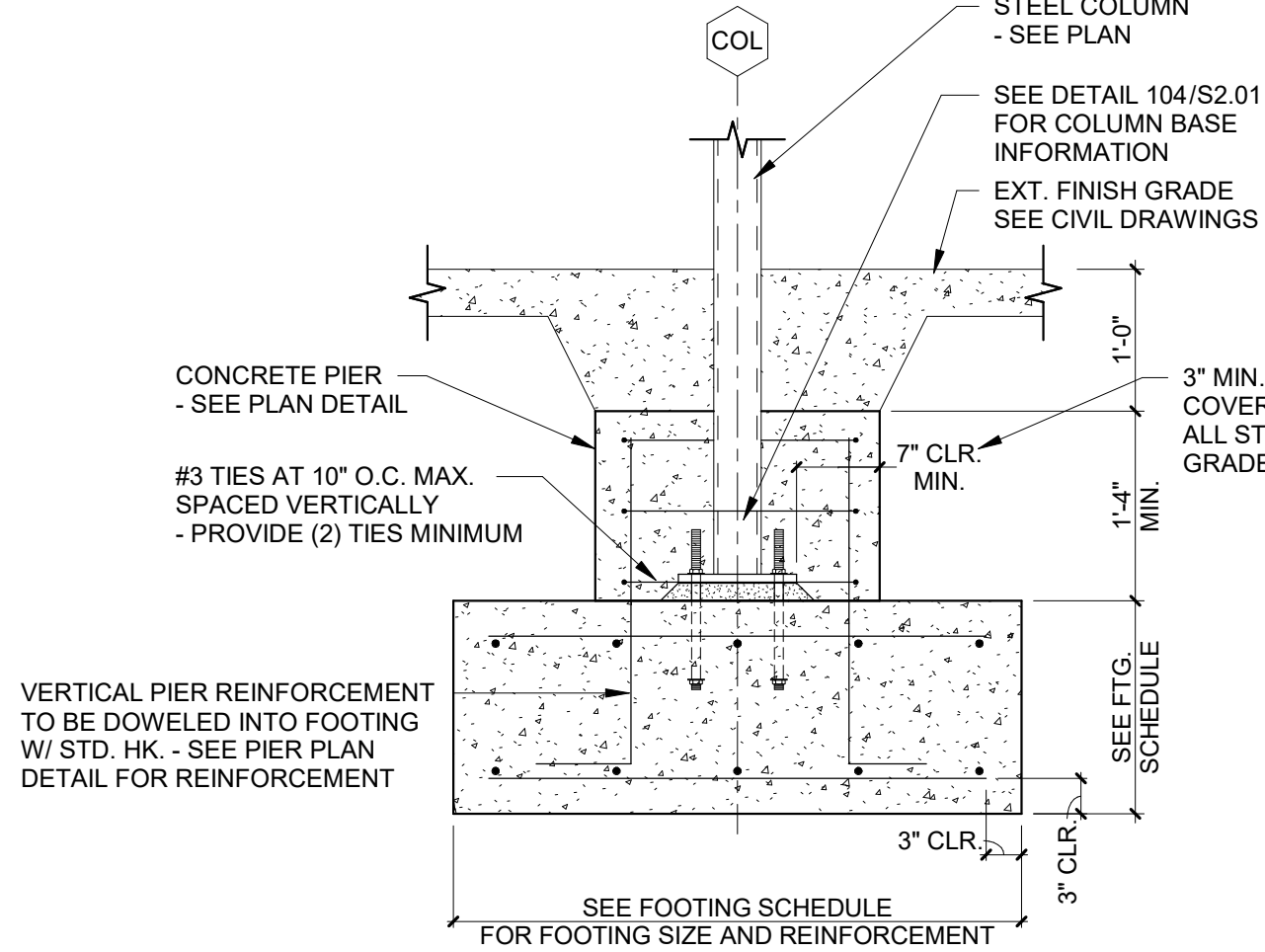


COLUMN PIER AND FOOTING DETAIL

102

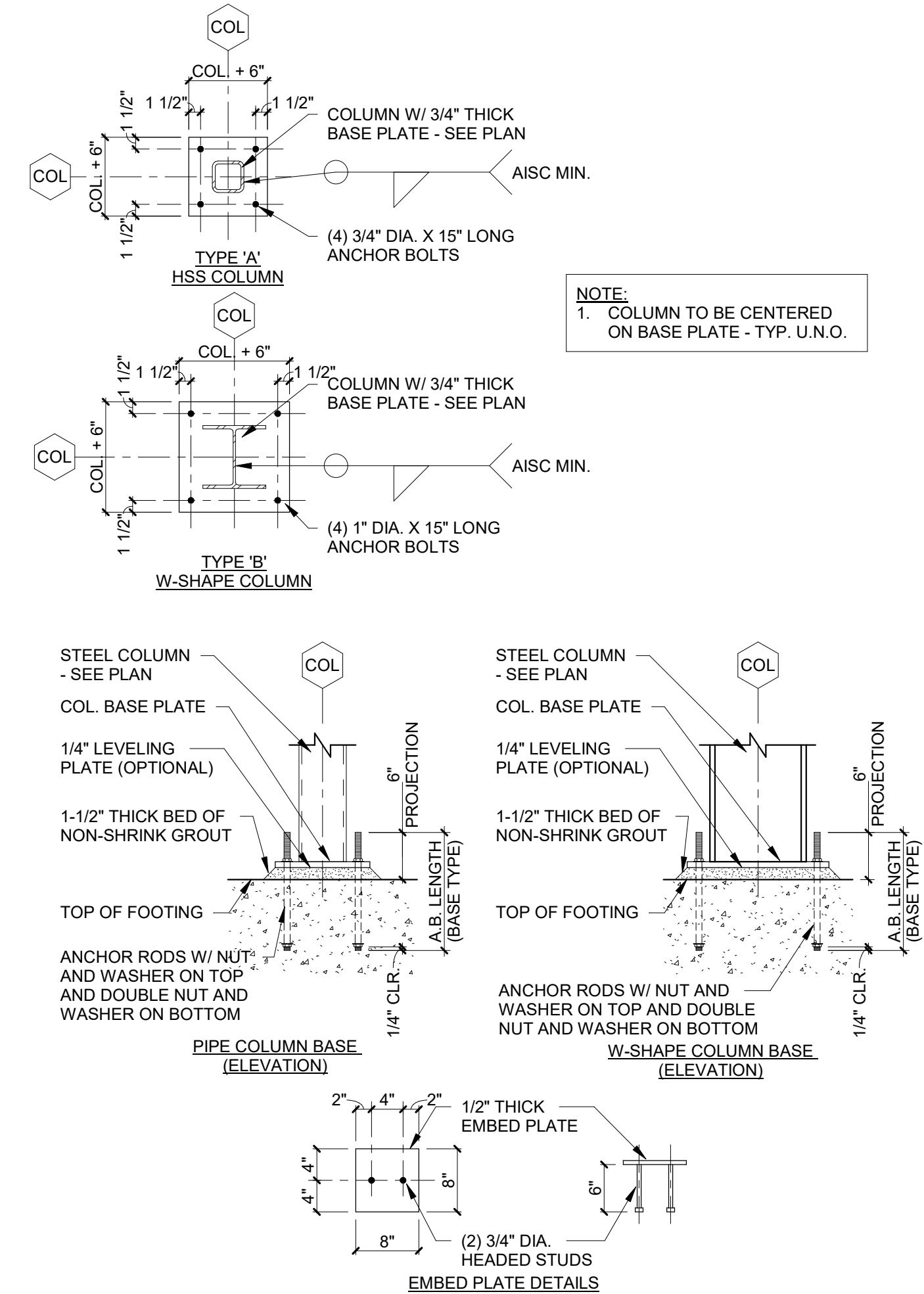


PIER PLAN DETAIL



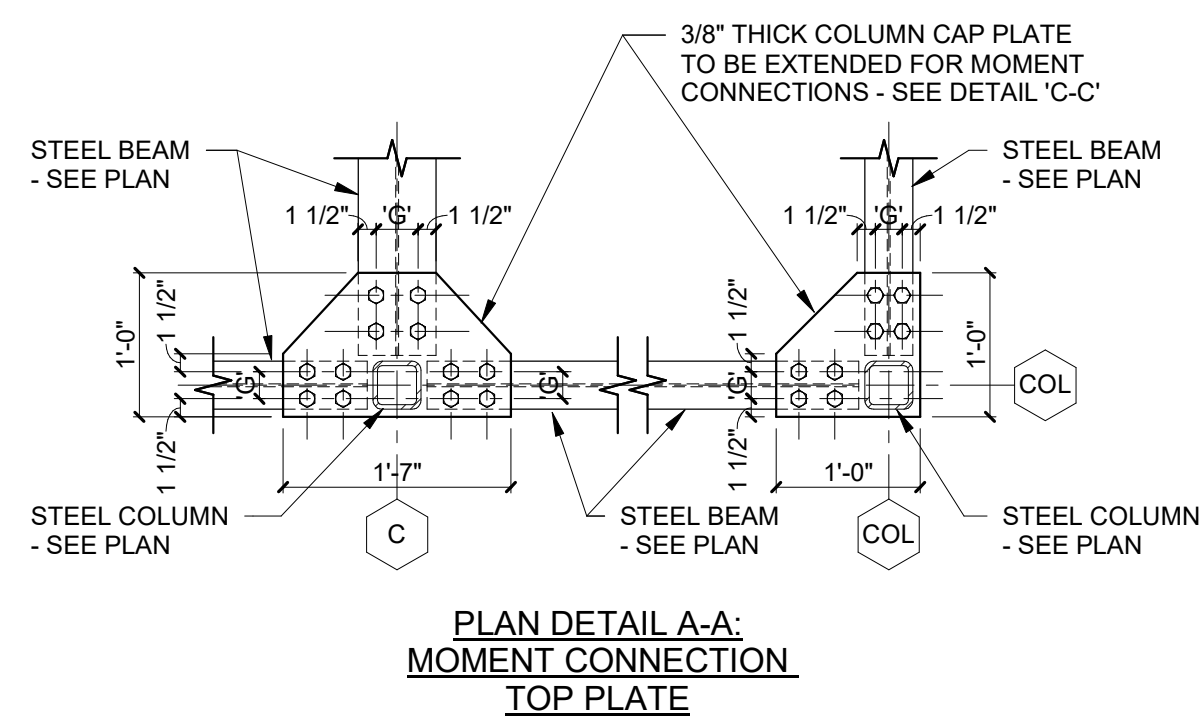
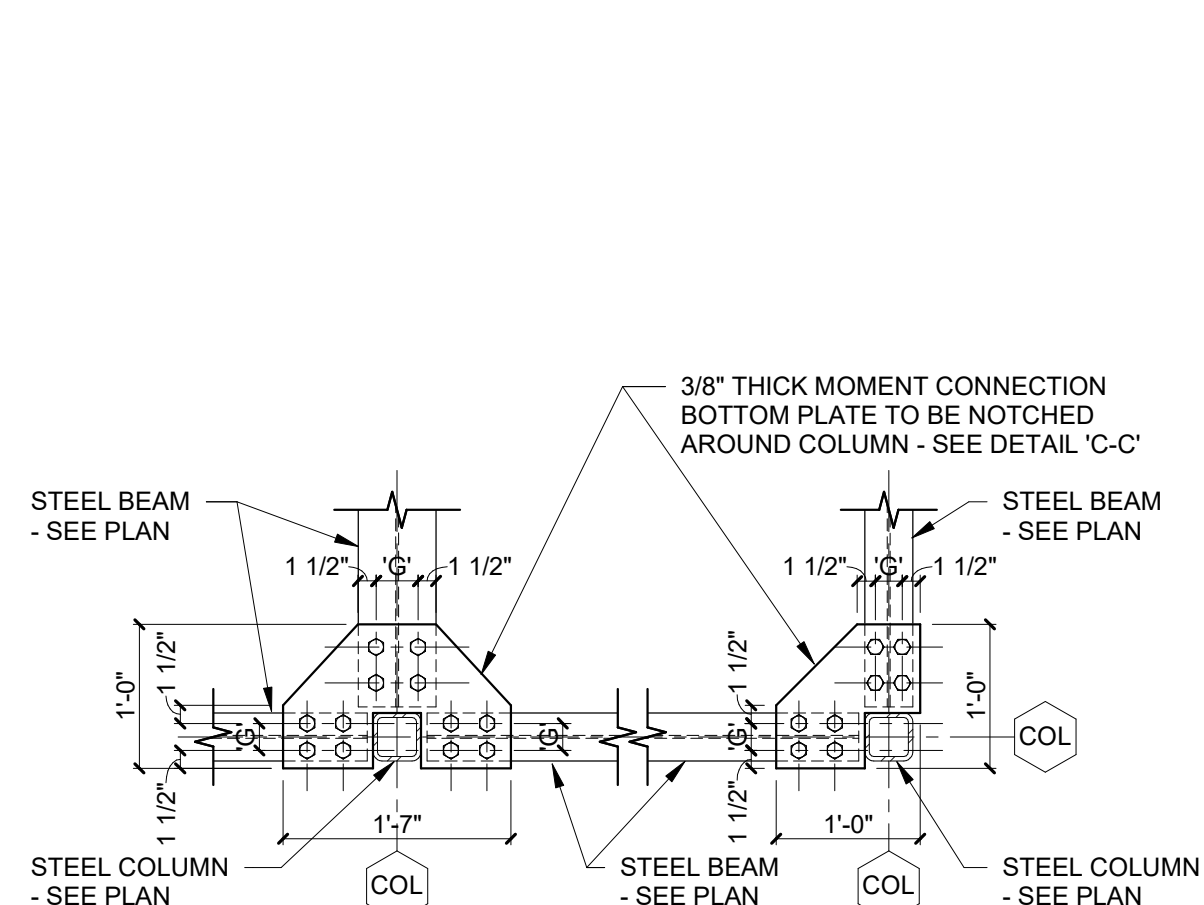
COLUMN PIER AND FOOTING DETAIL

103

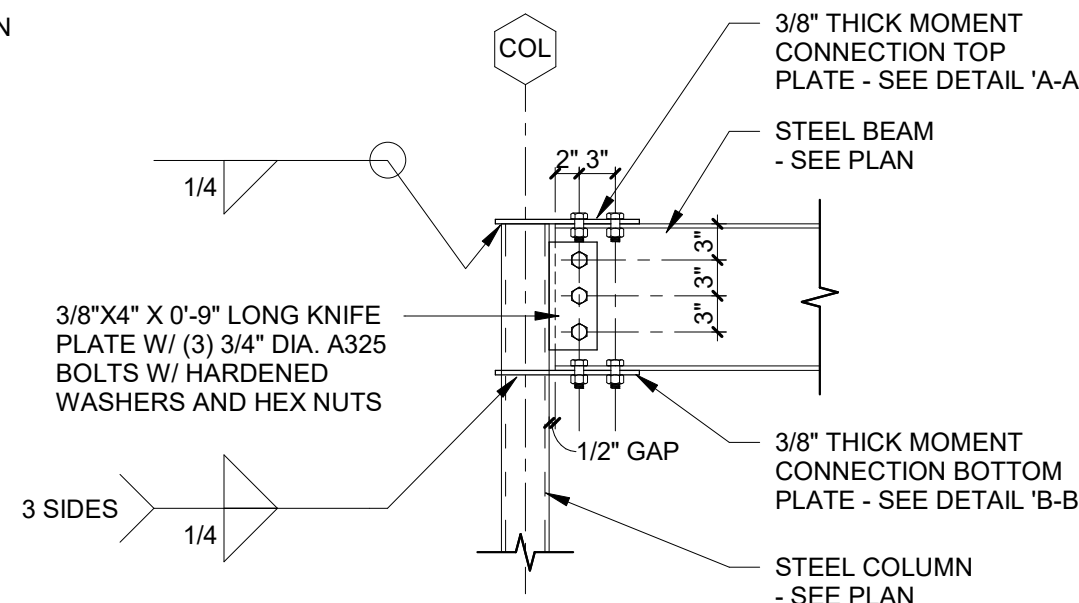


COLUMN BASE AND EMBED PLATE DETAILS

104

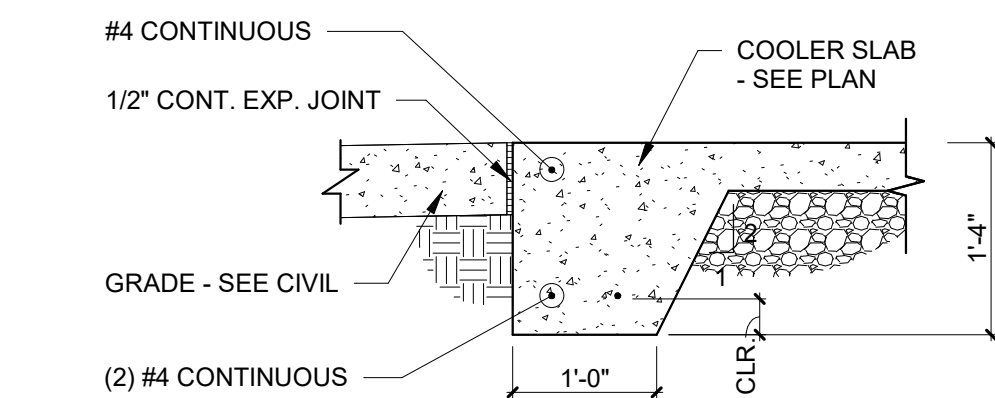
PLAN DETAIL A-A:
MOMENT CONNECTION
TOP PLATEPLAN DETAIL B-B:
MOMENT CONNECTION
BOTTOM PLATE

MOMENT CONNECTION DETAIL

SECTION DETAIL C-C:
MOMENT CONNECTION

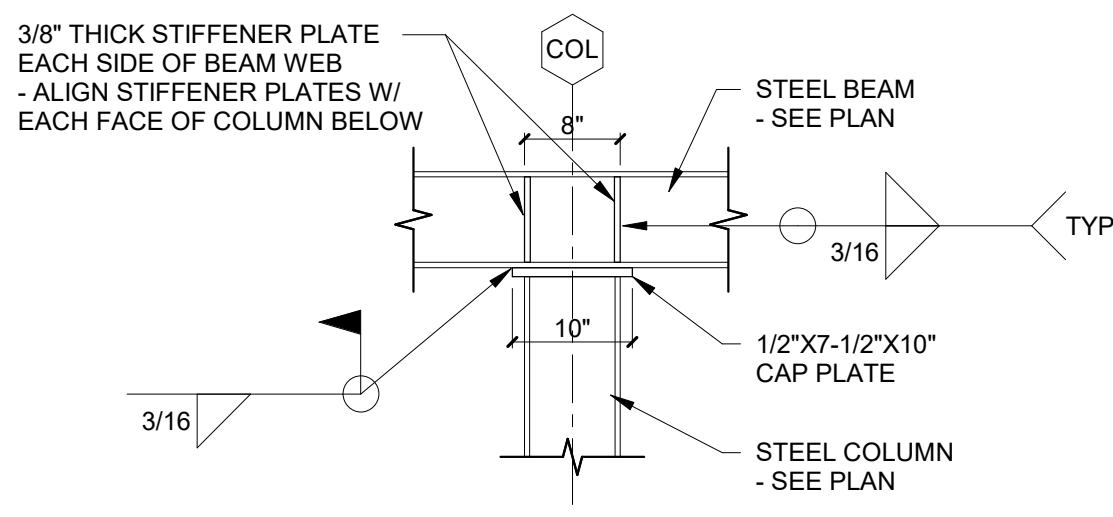
NOTE:
ALL BOLTED MOMENT CONNECTIONS ARE
TO HAVE PRE-TENSIONED BOLTS AND DTI
WASHERS. SEE GENERAL NOTES.

105



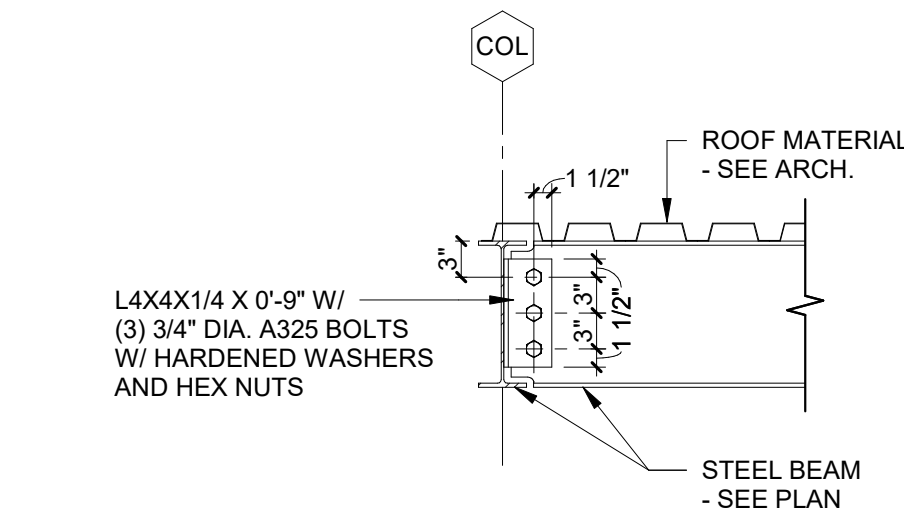
EXTERIOR SLAB TURNDOWN

106



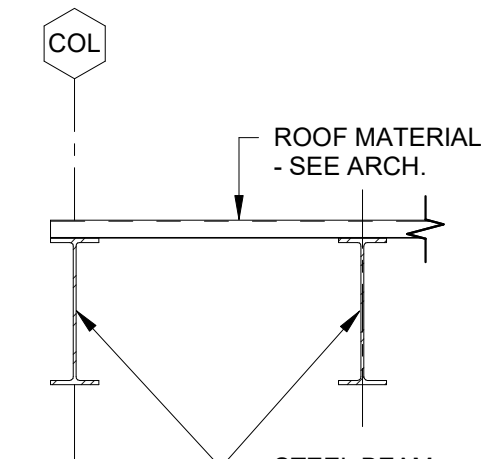
MOMENT CONNECTION DETAIL

109



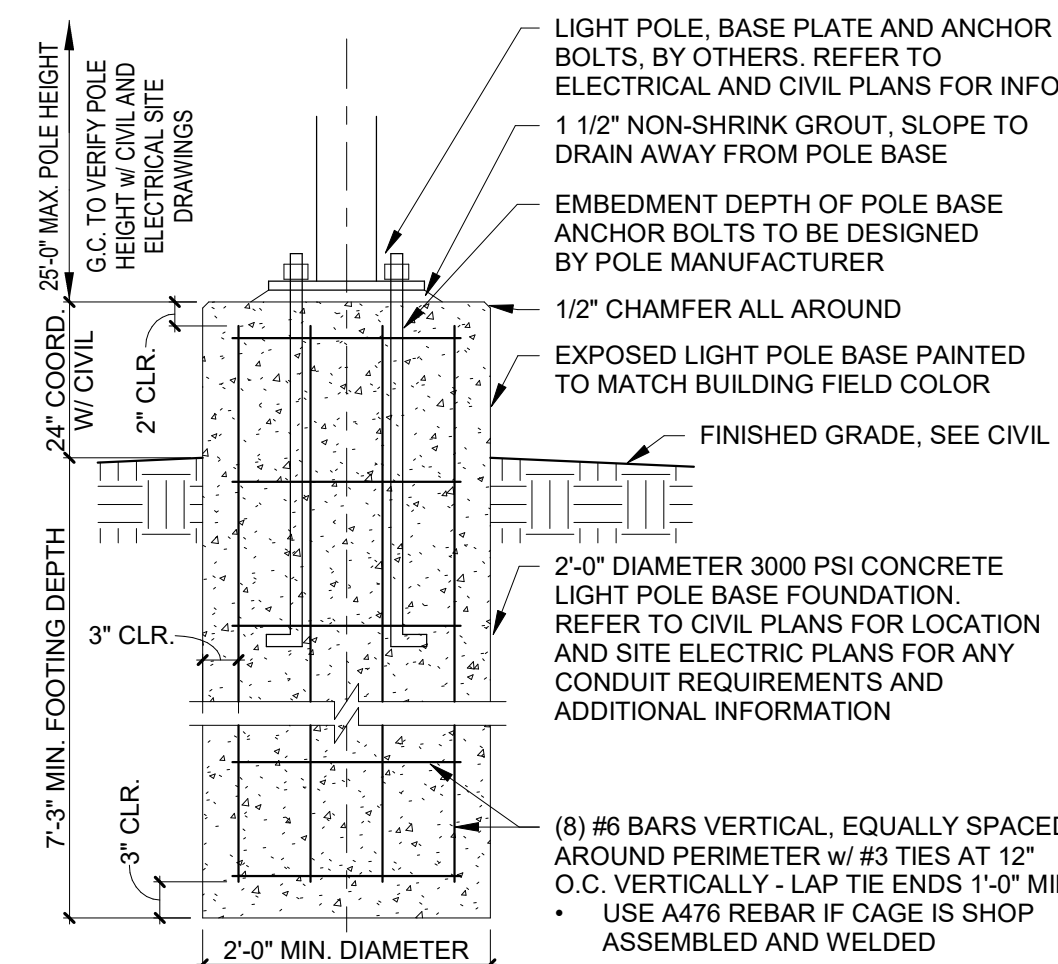
SECTION AT ROOF

107



SECTION AT ROOF

108



LIGHT POLE BASE

110

smalls
SLIDERS

SMALLS SLIDERS
LEES SUMMIT, MO
101 SW OLDHAM PKWY
LEES SUMMIT, MO 64081

Hill
FOLEY ROSSI
ARCHITECTURE • ENGINEERING

Hill Foley Rossi & Associates
ARCHITECTURE AND
STRUCTURAL ENGINEERING
3680 Pleasant Hill Road
Suite 200
Duluth, GA 30096
770-622-9858
SEALED

00.00.0000

COPYRIGHT
THESE DOCUMENTS ARE PROTECTED BY UNITED STATES COPYRIGHT
LAW. THEY HAVE BEEN PREPARED SPECIFICALLY FOR THE PROJECT
IDENTIFIED AND ARE NOT SUITABLE FOR USE ON ANY OTHER PROJECT
OR AT ANY OTHER LOCATION WITHOUT THE EXPRESS WRITTEN
APPROVAL AND PARTICIPATION OF SMALLS SLIDERS. REPRODUCTION
OF THESE DOCUMENTS MUST BE AUTHORIZED BY SMALLS SLIDERS.
ALL RIGHTS ARE RESERVED TO SMALLS SLIDERS.

SECTIONS AND DETAILS

REVISIONS		PROJECT NO:	
NO.	DATE	25.2003	
		SHEET	
		S2.01	

DATE: ---