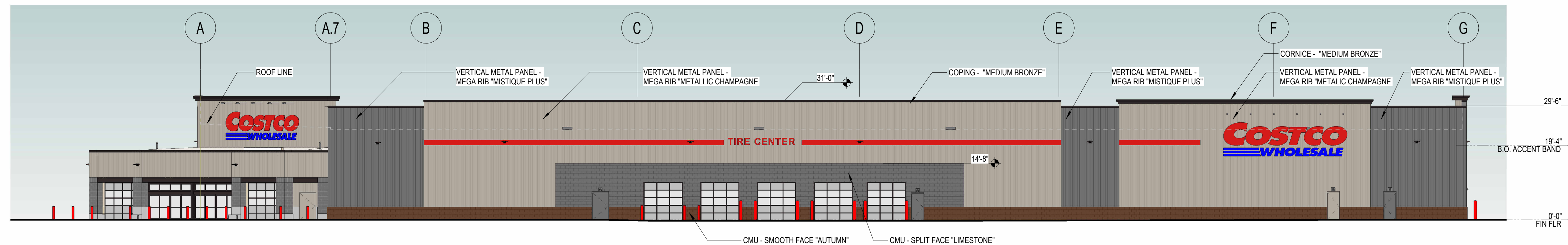


1 SOUTH ELEVATION

SCALE: 1/16" = 1'-0"



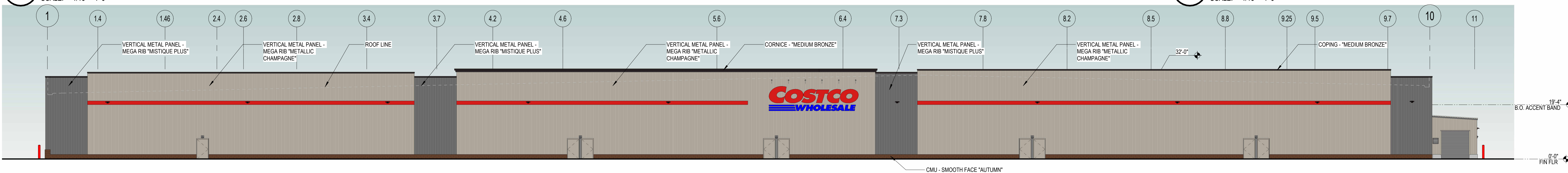
2 EAST ELEVATION

SCALE: 1/16" = 1'-0"



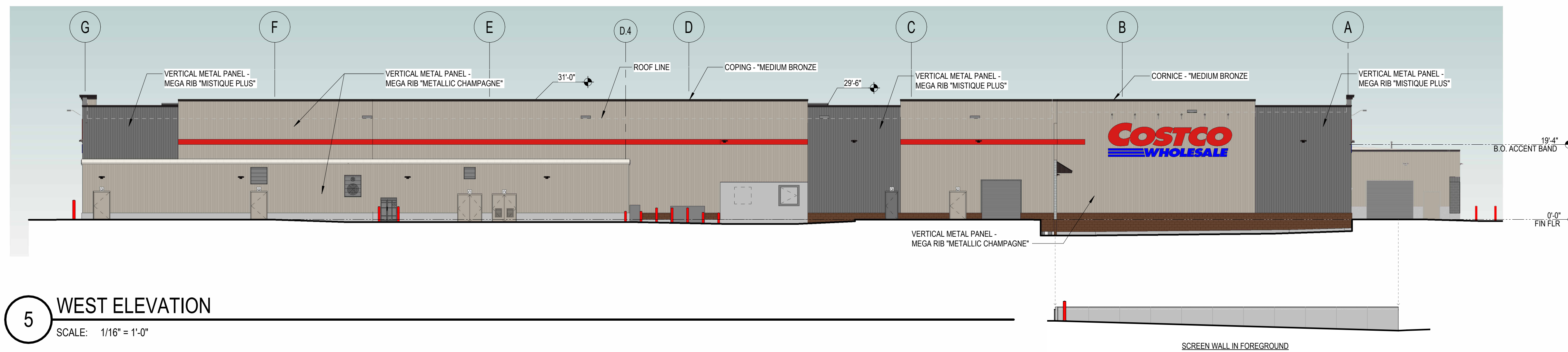
3 ENTRY CANOPY ELEVATION

SCALE: 1/16" = 1'-0"



4 NORTH ELEVATION

SCALE: 1/16" = 1'-0"



5 WEST ELEVATION

SCALE: 1/16" = 1'-0"

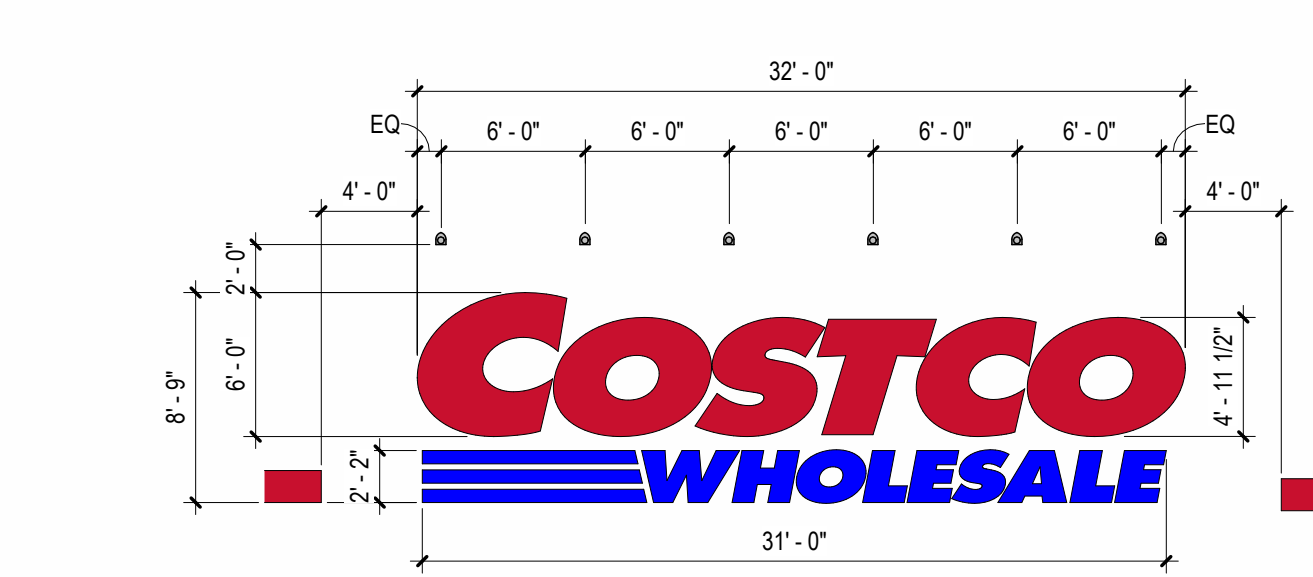
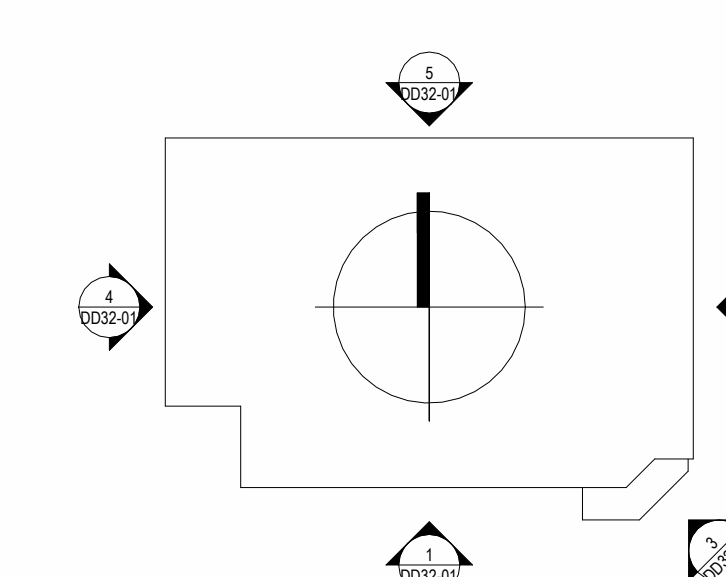
MATERIAL PERCENTAGES

MATERIAL	ELEVATION				TOTAL
	SOUTH	EAST	NORTH	WEST	
VERTICAL RIBBED ARCHITECTURAL METAL PANEL - METALLIC CHAMPAGNE	8,900 SF 65%	5,209 SF 37%	12,896 SF 82%	7,300 SF 56%	34,305 SF 71%
VERTICAL RIBBED ARCHITECTURAL METAL PANEL - MISTIQUE PLUS	1,916 SF 14%	1,078 SF 8%	1,040 SF 7%	1,088 SF 8%	5,122 SF 14%
SMOOTH FACE CMU "AUTUMN"	688 SF 5%	803 SF 6%	853 SF 6%	412 SF 3%	2,756 SF 7%
SPLIT FACE CMU "LIMESTONE"	146 SF 1%	919 SF 7%	25 SF 0%	130 SF 1%	1,220 SF 3%
GLAZING	842 SF 6%	501 SF 4%	587 SF 4%	587 SF 4%	2,517 SF 7%

*CALCULATION DOES NOT INCLUDE EXTERIOR EXPRESS DOORS

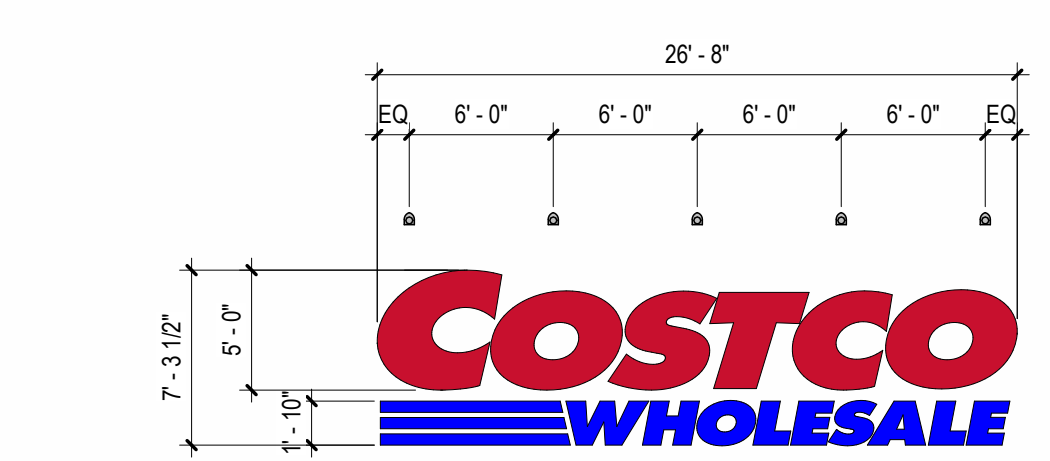
SIGNAGE AREA TABULATION (WALL SIGNAGES)

QTY	SIGN	SIZE	AREA (SF) EA	TOTAL SF
4	COSTCO WHOLESALE	6'-0" X 11'-0"	251 SF	1,004 SF
1	COSTCO WHOLESALE	5'-0" X 11'-0"	174 SF	174 SF
1	TIRE CENTER	17'-4" X 1'-9"	31 SF	31 SF
TOTAL SIGNAGE AREA				1,209 SF



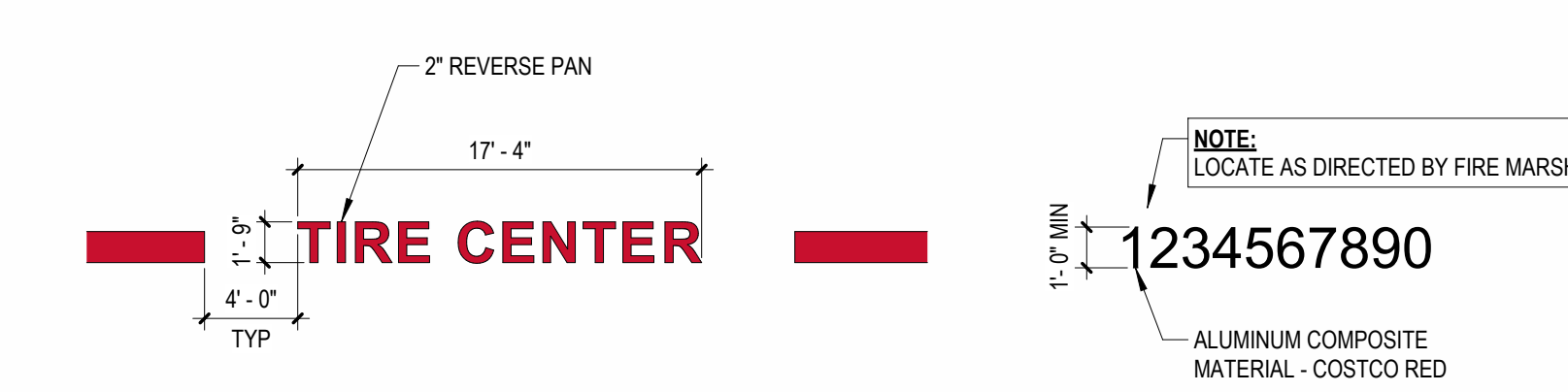
8 BUILDING SIGNAGE

SCALE: 1/8" = 1'-0"



9 ENTRY SIGNAGE

SCALE: 1/8" = 1'-0"



10 LOCATION SIGNAGE

SCALE: 1/8" = 1'-0"

COSTCO WHOLESALE

LEE'S SUMMIT, MO

BUILDING ELEVATIONS

AUGUST 8, 2025



AUGUST 8, 2025

BUILDING ELEVATIONS

DD32-01

© MG2, Inc. All rights reserved. No part of this document may be reproduced in any form or by any means without permission in writing from MG2.