

INDEX OF SHEETS

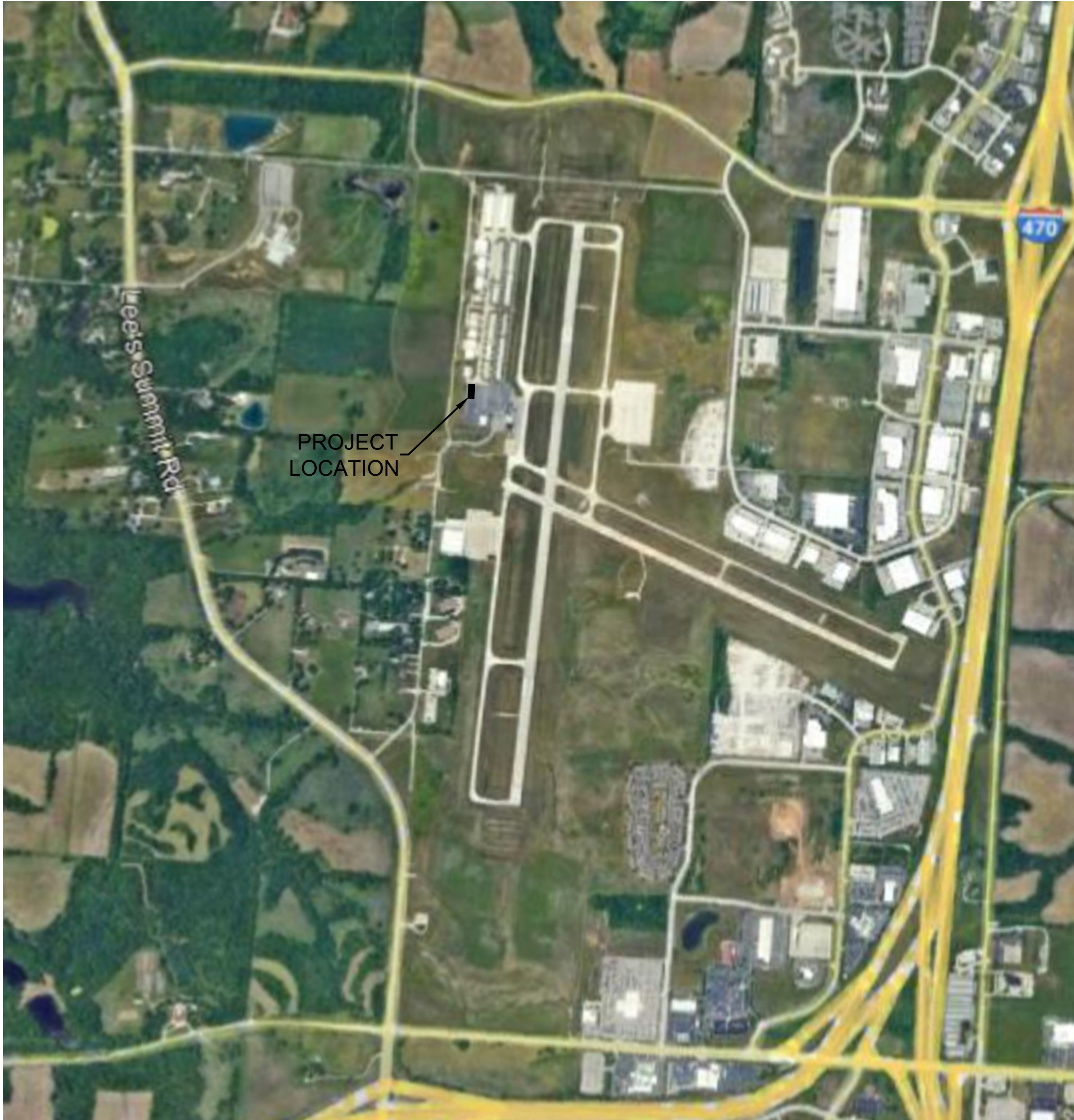
GENERAL PLANS

- 1 COVER SHEET
- 2 EXISTING CONDITIONS
- 3 DEMOLITION PLAN
- 4 GRADING & EROSION CONTROL
- 5 OVERALL SITE & DIMENSION
- 6 SPOT ELEVATIONS
- 7 UTILIY PLAN
- 8 SITE LAT. LONG. & LEASE INFORMATION
- 9 DETAILS SHEET

APPENDIX

LIGHTING & PHOTOMETRIC PLAN

MIDWEST AVIONICS HANGAR
LEE'S SUMMIT AIRPORT
FINAL DEVELOPMENT PLAN
CITY OF LEE'S SUMMIT, JACKSON COUNTY, MISSOURI



NOT TO SCALE

UTILITIES

City of Lee's Summit
Public Works
220 SE Green
Lee's Summit, MO 64063
816-969-1800

City of Lee's Summit
Water and Sewer
1200 SE Hamblen Road
Lee's Summit, MO 64081
816-969-1900

Spire
(Administrative Offices)
3025 S.E. Clover Drive
Lee's Summit, MO 64082
816-537-4681

Everygy
401 SE Bailey Road
Lee's Summit, MO. 64081
816-347-4320

AT&T
Rick Bryan
500 E. 8th Street
Kansas City, MO 64106
913-727-9809

Comcast Cable
New Construction Hotline
866-771-2281

Missouri One-Call
1-800-344-7483

PROJECT BENCHMARK:

#1 Top of Sanitary Manhole lid at northwest corner of site.
N: 1018226.45
E: 2823698.81
TOP ELEV. = 993.94



Know what's below.
Call before you dig.

GENERAL NOTES:

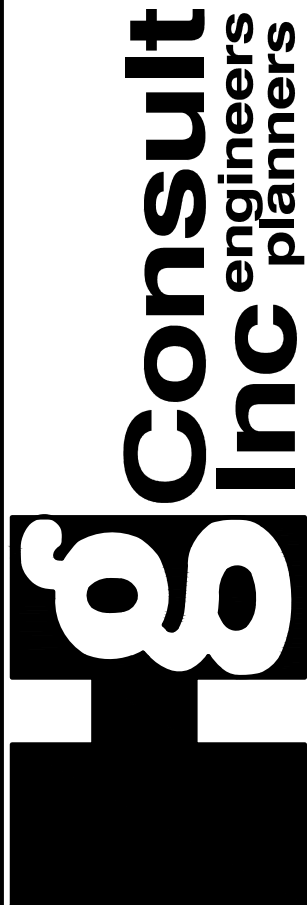
- The underground utilities shown herein have been plotted from available information and do not necessarily reflect the actual existence, or nonexistence, size, type, number, or locations of these or other utilities. The contractor shall be responsible for verifying the actual locations of all underground utilities, shown or not shown, and said utilities shall be located in the field prior to any grading, excavation, or construction of improvements. These provisions shall in now way obseve any party from complying with the "UNDERGROUND FACILITY SAFETY AND DAMAGE PREVENTION ACT", Chapter 319, RSMO.
- Gas, Water, and other Utilities shall not conflict with the depth or horizontal location of existing and proposed sanitary and storm sewers, including building laterals.
- Prior to submittal of construction bids, the Contractor shall be required to visit the site to verify existing conditions and proposed improvements.
- The Contractor shall be responsible for notification and coordination with all Utility Companies.
- The Contractor shall notify the Engineer immediately of any discrepancies in the plans "PRIOR" to installation or fabrication of structures.
- All sidewalk shall be ADA compliant.
- There are no oil or gas wells located on the subject property as of September 1, 2022 as shown by the Missouri Geological Survey GEOSTRAT (Geosciences Technical Resource Assessment Tool).

OWNER
MIDWEST AVIONICS
2525 NE Douglas Street
Lee's Summit, MO 64064
(620) 719-0673
Contact - Levi Self

ENGINEER
Hg CONSULT, INC.
1533 Locust Street
Kansas City, MO 64086
(816) 703-7098
Contact - Kevin Sterrett

COVER SHEET

MIDWEST AVIONICS HANGAR
CITY OF LEE'S SUMMIT, JACKSON COUNTY, MISSOURI



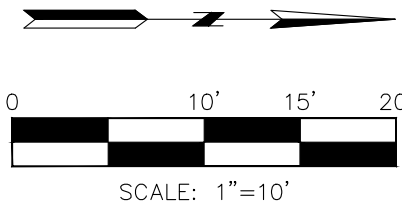
1533 Locust Street, Kansas City, Missouri 64108
CORPORATE LICENSE No. E201000573 (MO.) / E-1736 (KS.) / LS 2019005467



R. KEVIN STERRETT, MO E-26440
September 10, 2025

DATE	REVISION	NO.	BY	CHKAPP
09/09/25	Removed Storm Sewer and realigned Water Main	3	ZTW	RKS
08/27/25	Revisions to Sheet Callouts and Notes (8/27/25)	2	ZTW	RKS
08/26/25	Revisions for Temporary Asphalt on South Side of Building	1	ZTW	RKS

IF THIS IS NOT A BLUE INK SEAL AND THE SIGNATURE IN BLUE INK, THE PLAN IS A COPY AND MAY CONTAIN UNAUTHORIZED ALTERATIONS. THE CERTIFICATION CONTAINED ON THIS DOCUMENT SHALL NOT APPLY TO ANY COPIES.



1. See architectural submittal for all building details, lighting details, and MEP plans
2. All curb to be CG-1 unless otherwise stated
3. All dimensions are to back of curb, unless otherwise stated

Total required: 21 Spaces

Total Provided: 21 Spaces

FAA Spec. Concrete (SEE NOTE 5 BELOW)

10 # of Parking Stalls

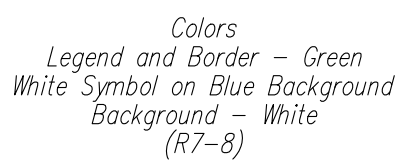
SITE PLAN TABLE	
Site Area SF	24,145.5
Building SF	12,000.0
Lease Area SF	22,950.2
PARKING REQUIREMENTS	
Required	21
Provided	21

1. According to the F.E.M.A. FIRM Map No. 29095C0409G, dated January 20, 2017 and FIRM Map No. 29095C0430G, dated January 20, 2017, this tract graphically lies in OTHER AREAS, ZONE X, defined as areas determined to be outside the 0.2% annual chance floodplain.
2. This site lies in the MAYBROOK WATER SHED.
3. There are no Oil and Gas Wells on this site per Missouri Department of Natural Resources GIS.
4. Trash will be collected inside and removed from site by owner.

5. Concrete Requirements:

- 12 inch Cement Treated Subgrade
- 6 inch Aggregate Base Course
- 8 inch PCCP.

These specifications are per FAA Guidelines, and are required for any/all concrete poured on this site.



ACCESSIBLE SIGN DETAIL

N.T.S.

1. Mount 2 Accessible Signs to building. See plans for locations.
2. All signs should comply with U.S. Department of Transportation Federal Highway Administration's "Uniform Traffic Control Devices," and local codes as specified. Mount signs in accordance with manufacturer's instructions.




DATE	REVISION	NO.	BY	CK/APP
08/09/25	Revised Storm Sewer and enlarged Water Main	3	ZIM	RKS
08/27/25	Revisions to Street Curb and Notes (02/27/25)	2	ZIM	RKS
08/28/25	Revisions for Temporary Asphalt on South Side of Building	1	ZIM	RKS

IF THIS IS A BLUE INK SEAL AND THE SIGNATURE IN BLUE INK, THE PLAN IS A COPY AND MAY CONTAIN UNAUTHORIZED ALTERATIONS. THE CERTIFICATION CONTAINED ON THIS DOCUMENT SHALL NOT APPLY TO ANY COPIES.



R. KEVIN STERRETT, MO E-26440
September 10, 2025



1533 Locust Street, Kansas City, Missouri 64108
CORPORATE LICENSE No. E201000573 (MO.) / E-1736 (KS.) / LS 2019005467

OVERALL SITE & DIMENSION

MIDWEST AVIONICS HANGAR
CITY OF LEE'S SUMMIT, JACKSON COUNTY, MISSOURI

X-REF NO.
4.092 Ba

DRAWING NO.
24.092

DATE _____

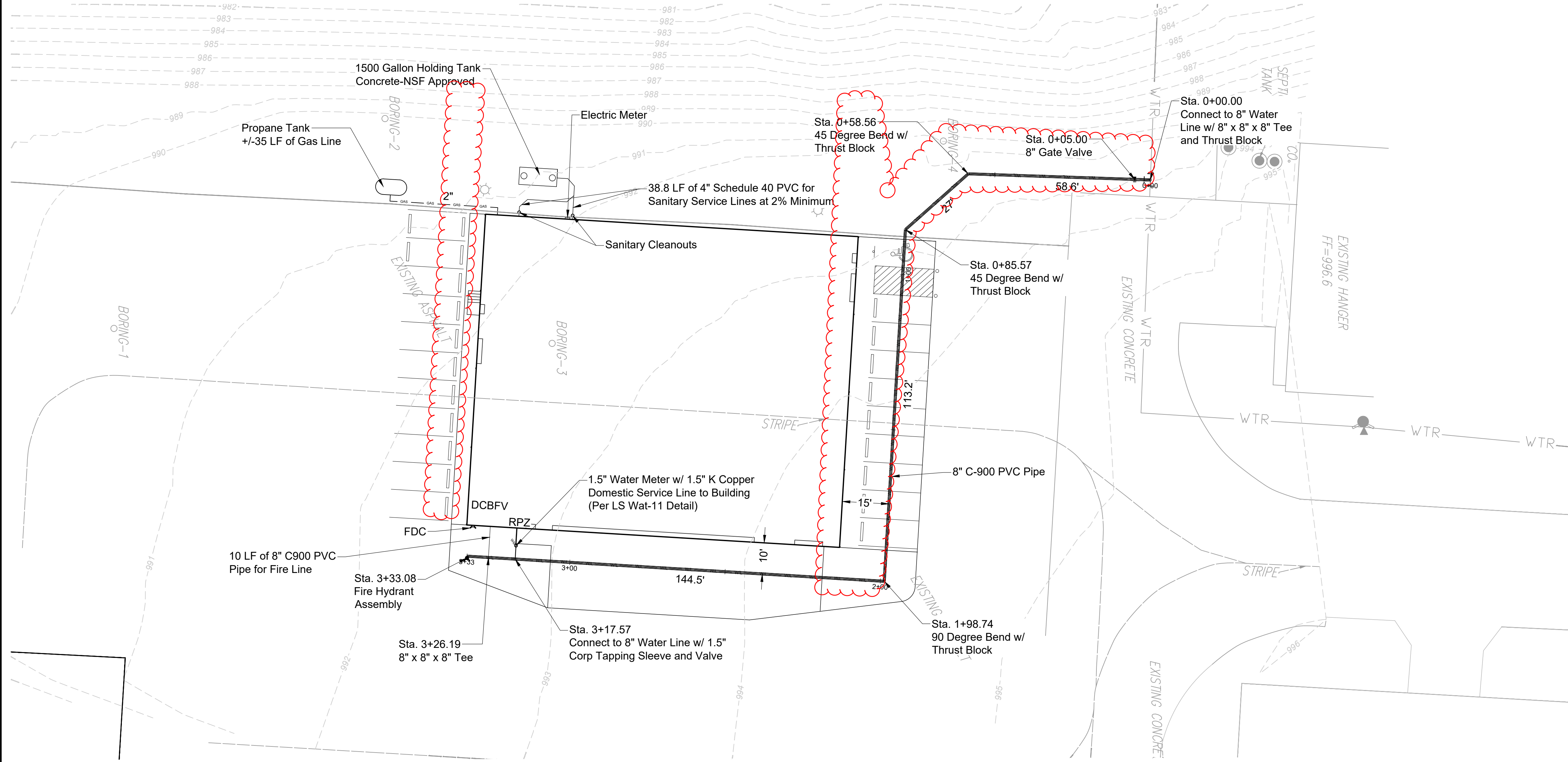
JOB NO.

5

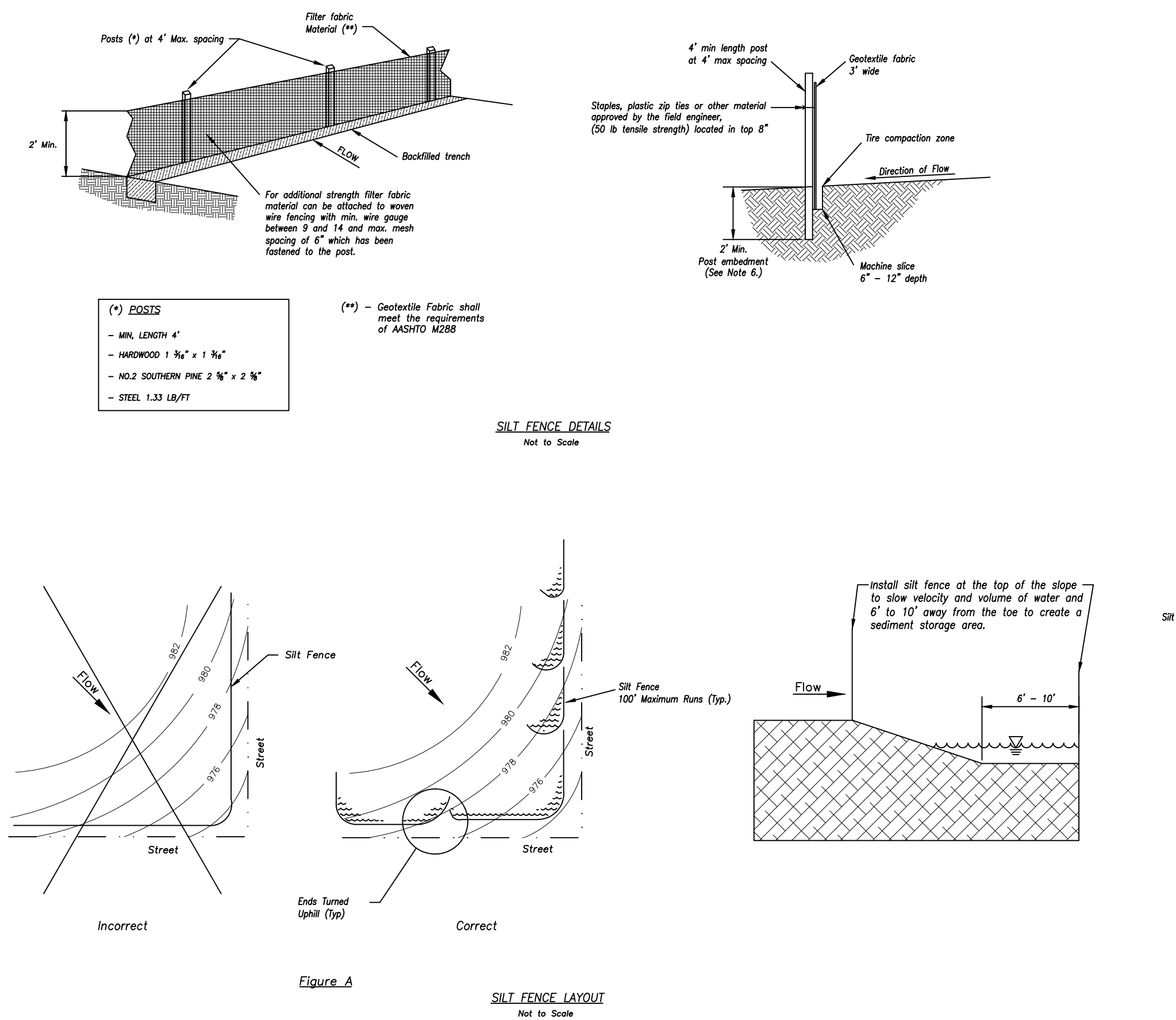
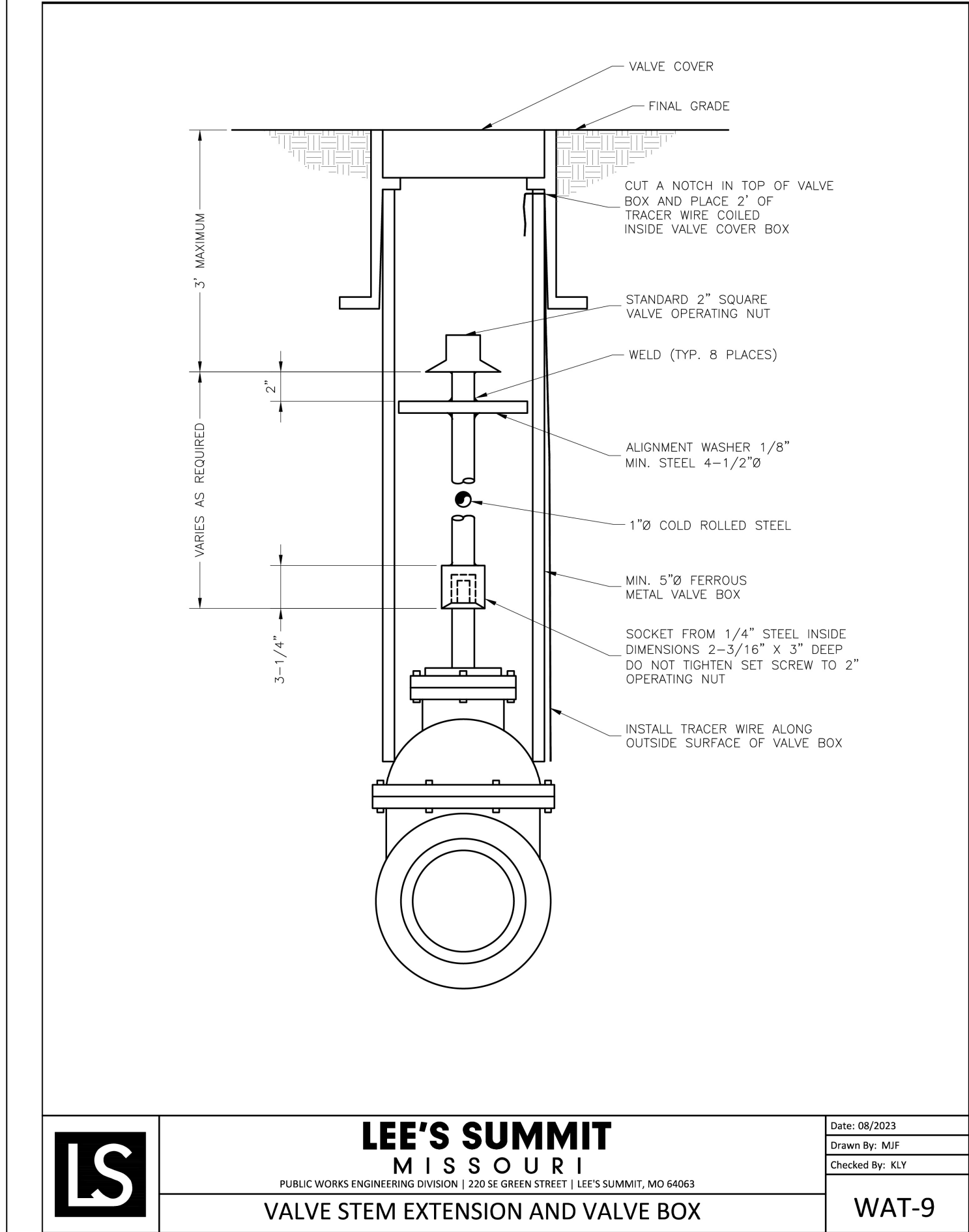
SHE
O

9

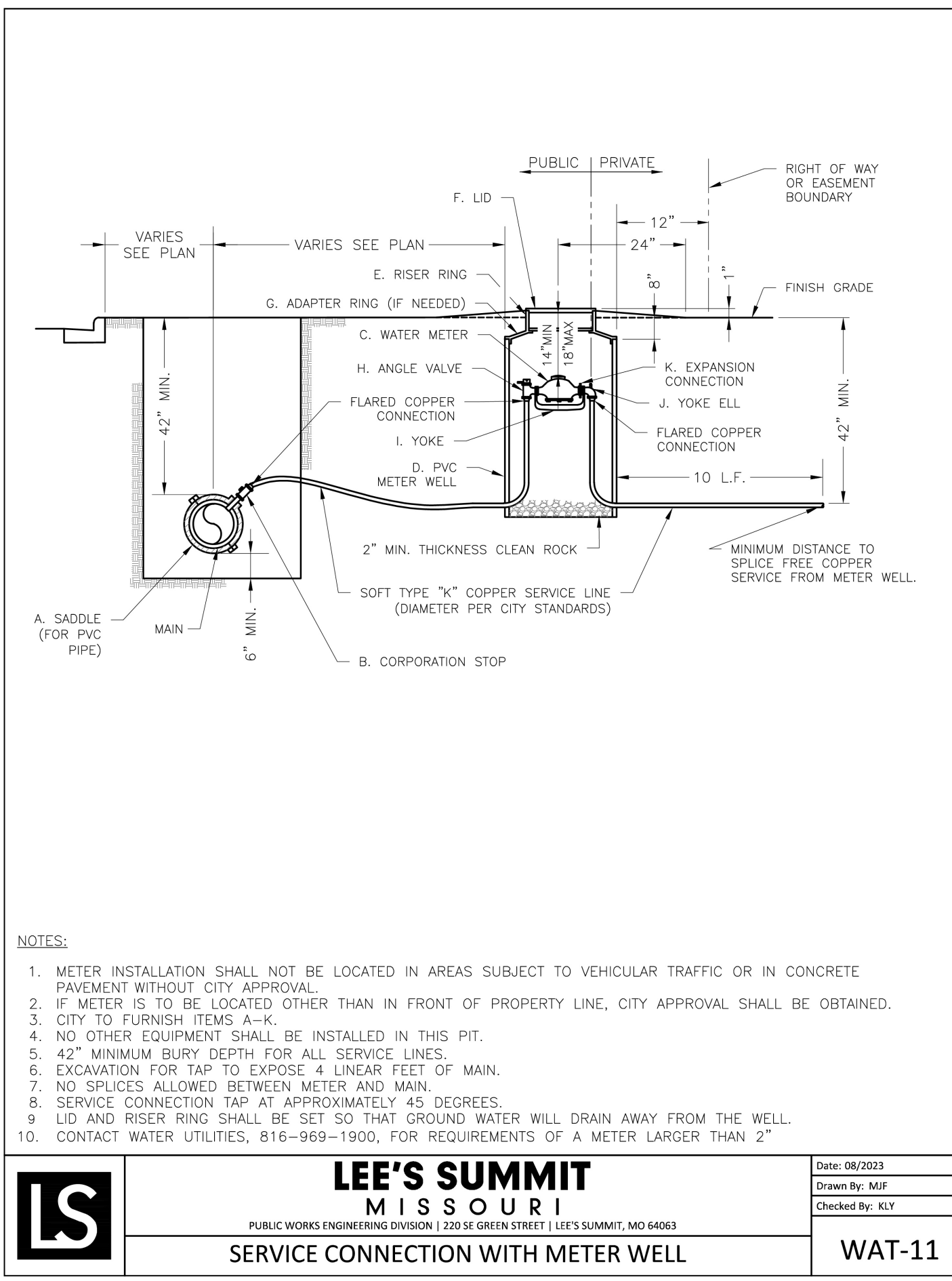
FILE LOCATION G:\SHARED-DRIVE\ENR\PROJECTS (P\ 2023-2024\2024-092 LEE'S SUMMIT AIRPORT HANGAR (CIVIL\WATER\FILES\24.092-6-01 & WATERL\DWG
PLOT DATE 9/10/2025 1:51 PM BY JAC WILSON



FILE LOCATION: G:\BARRIED DRAWINGS\PROJECTS\1916-2023\2023\2023-09-02 LEE'S SUMMIT AIRPORT HANGER\KOPIN\DWG\KOPIN\DWG\DETAILS\DWG
PLOT DATE: 9/10/2025 1:51:11 PM BY: JAC WILSON



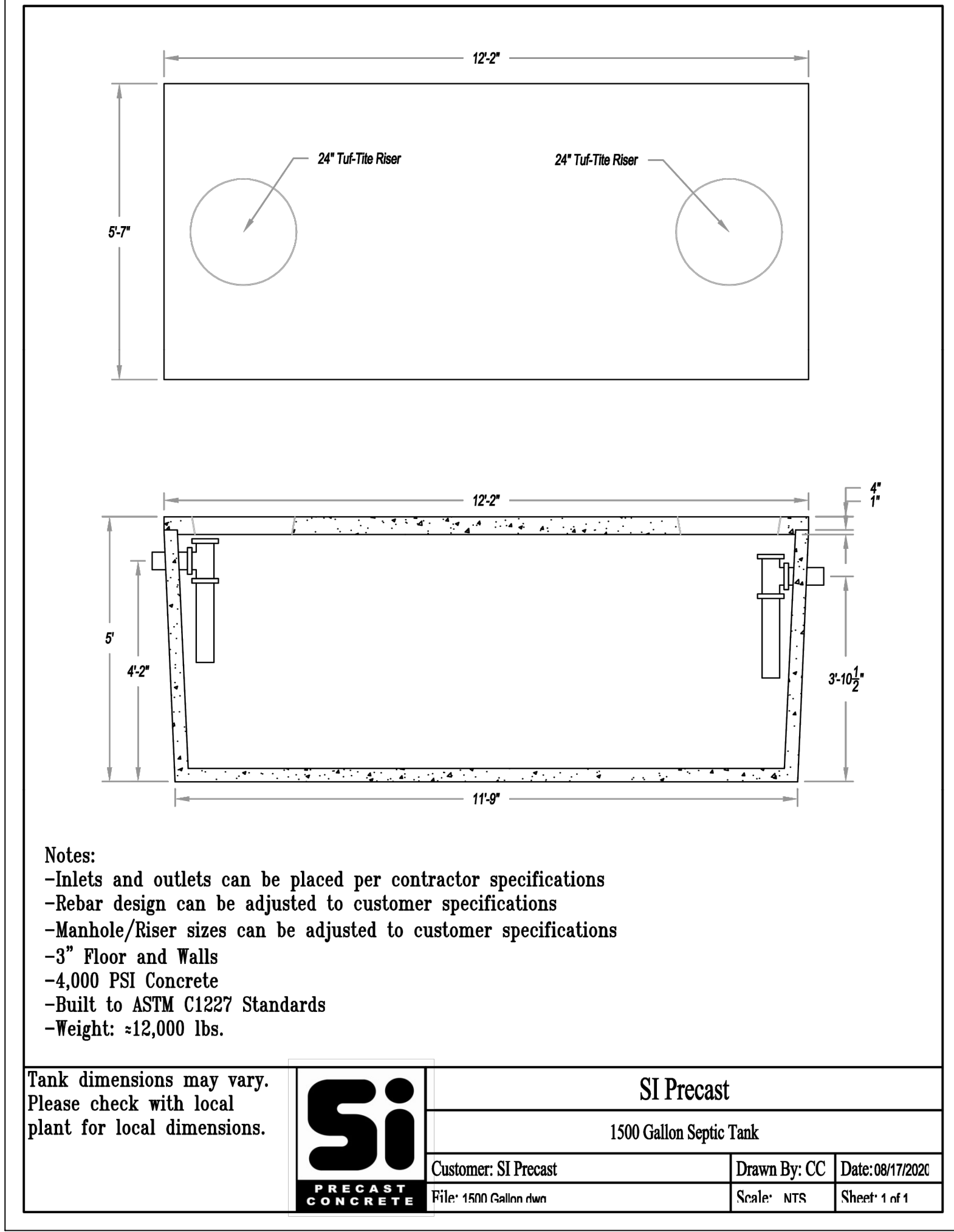
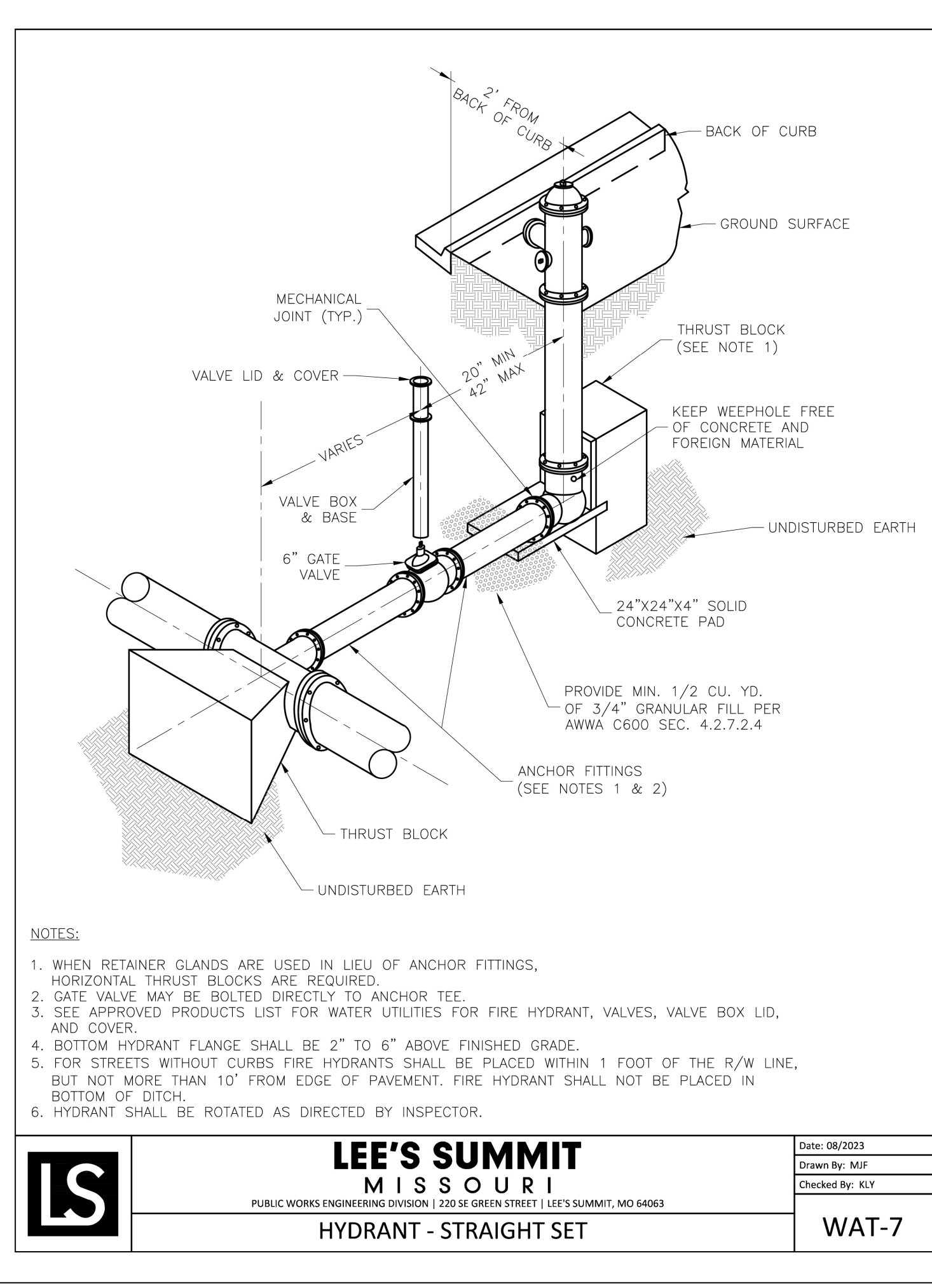
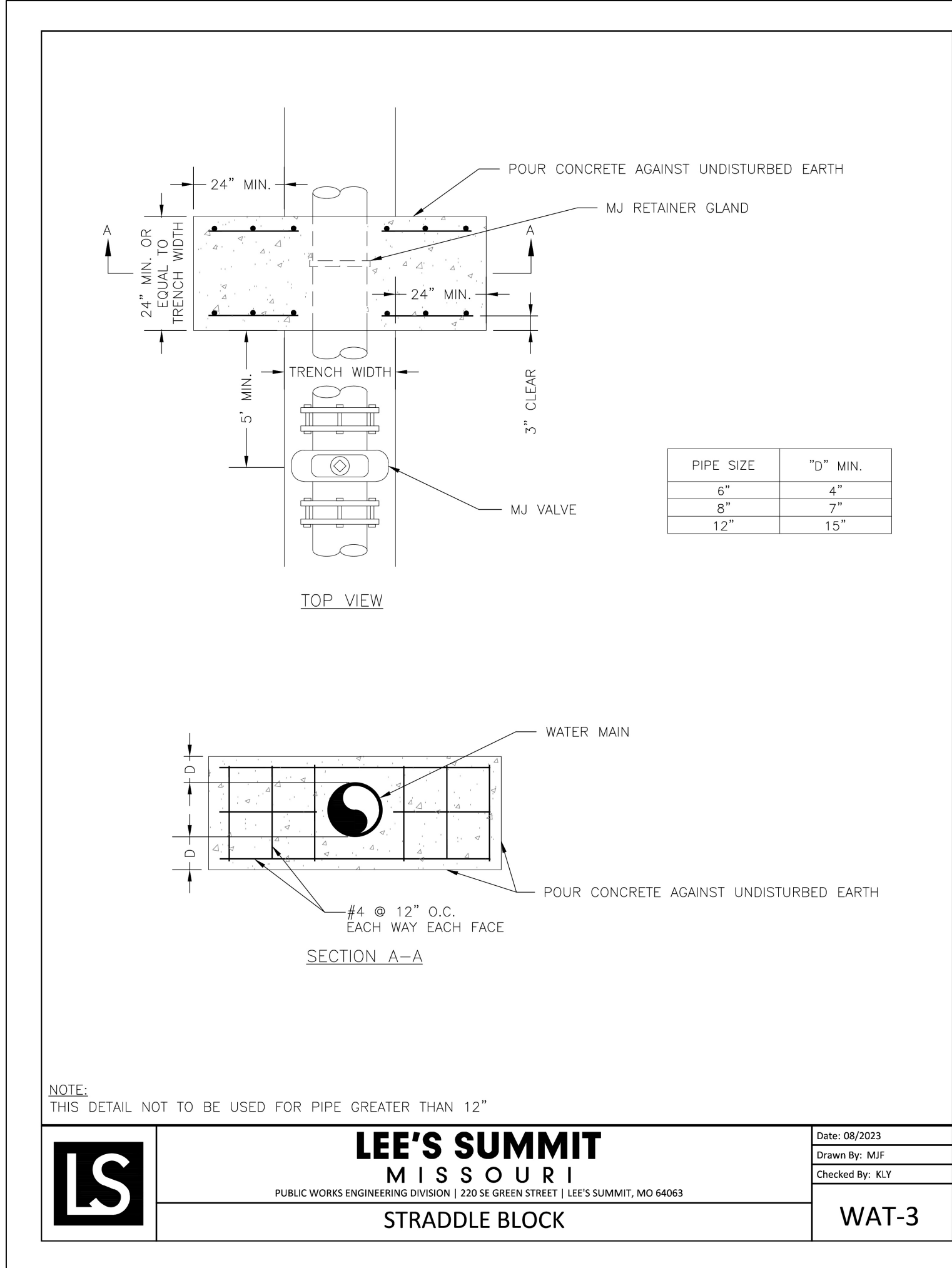
AMERICAN PUBLIC WORKS ASSOCIATION		
	KANSAS CITY METRO CHAPTER	
SILT FENCE	STANDARD DRAWING NUMBER ESC-03	ADOPTED: 10/24/2016



DETAILS SHEET

MIDWEST AVIONICS HANGAR
CITY OF LEE'S SUMMIT, JACKSON COUNTY, MISSOURI

X-REF. NO. 24.092 Base	
DRAWING NO. 24.092	
DATE September 10, 2025	
JOB NO. 24.092	
9	9



R. KEVIN STERRETT, MO E-26440
September 10, 2025

g8consult inc
engineers planners
1533 Locust Street, Kansas City, Missouri 64108
CORPORATE LICENSE NO. E201000573 (MO.) / E-1736 (KS.) / LS 2019005467