


A TRACT OF LAND LOCATED IN THE NORTHEAST QUARTER OF SECTION 30, TOWNSHIP 48 NORTH, RANGE 48 NORTH, LEE'S SUMMIT, JACKSON COUNTY, MISSOURI AND BEING ALL OF A 30.00 FOOT UTILITY EASEMENT AND BEING PART OF LOT 5 AND 7 OF VILLAGE AT DISCOVERY PARK RECORDED IN PLAT BOOK I214, PAGE 86 AND BEING DESCRIBED BY QUIT-CLAIM DEED RECORDED IN DOCUMENT NO. 2024E0011831 AND BEING MORE PARTICULARLY DESCRIBED AS FOLLOWS:

COMMENCING AT THE SOUTHEAST CORNER OF SAID LOT 7, SAID POINT BEING ON THE WEST LINE OF TRACT B AS SHOWN ON SAID VILLAGE OF DISCOVERY PARK PLAT AND WITH SAID WEST LINE, S 1°27'30"W, 22.36 FEET TO THE SOUTH LINE OF SAID 30.00 FOOT UTILITY EASEMENT, SAID POINT ALSO BEING THE POINT OF BEGINNING:

THENCE FROM THE POINT OF BEGINNING, LEAVING SAID WEST LINE AND WITH SAID SOUTH LINE, N 88°32'30"W, 33.50 FEET TO THE SOUTHWEST CORNER OF SAID UTILITY EASEMENT; THENCE LEAVING SAID SOUTH LINE AND WITH THE WEST LINE OF SAID UTILITY EASEMENT, N 1°27'30"E, 30.00 FEET TO THE NORTHWEST CORNER OF SAID UTILITY EASEMENT; THENCE LEAVING SAID WEST LINE AND WITH THE NORTH LINE OF SAID UTILITY EASEMENT, S 88°32'20"E, 80.49 FEET TO THE NORTHEAST CORNER OF SAID UTILITY EASEMENT; THENCE LEAVING SAID NORTH LINE AND WITH THE EAST LINE OF SAID UTILITY EASEMENT, S 1°27'30"W, 30.00 FEET TO THE SOUTHEAST CORNER OF SAID UTILITY EASEMENT; THENCE LEAVING SAID EAST LINE AND WITH SAID SOUTH LINE, N 88°32'30"W, 46.99 FEET TO THE POINT OF BEGINNING AND CONTAINING 2415 SQUARE FEET.





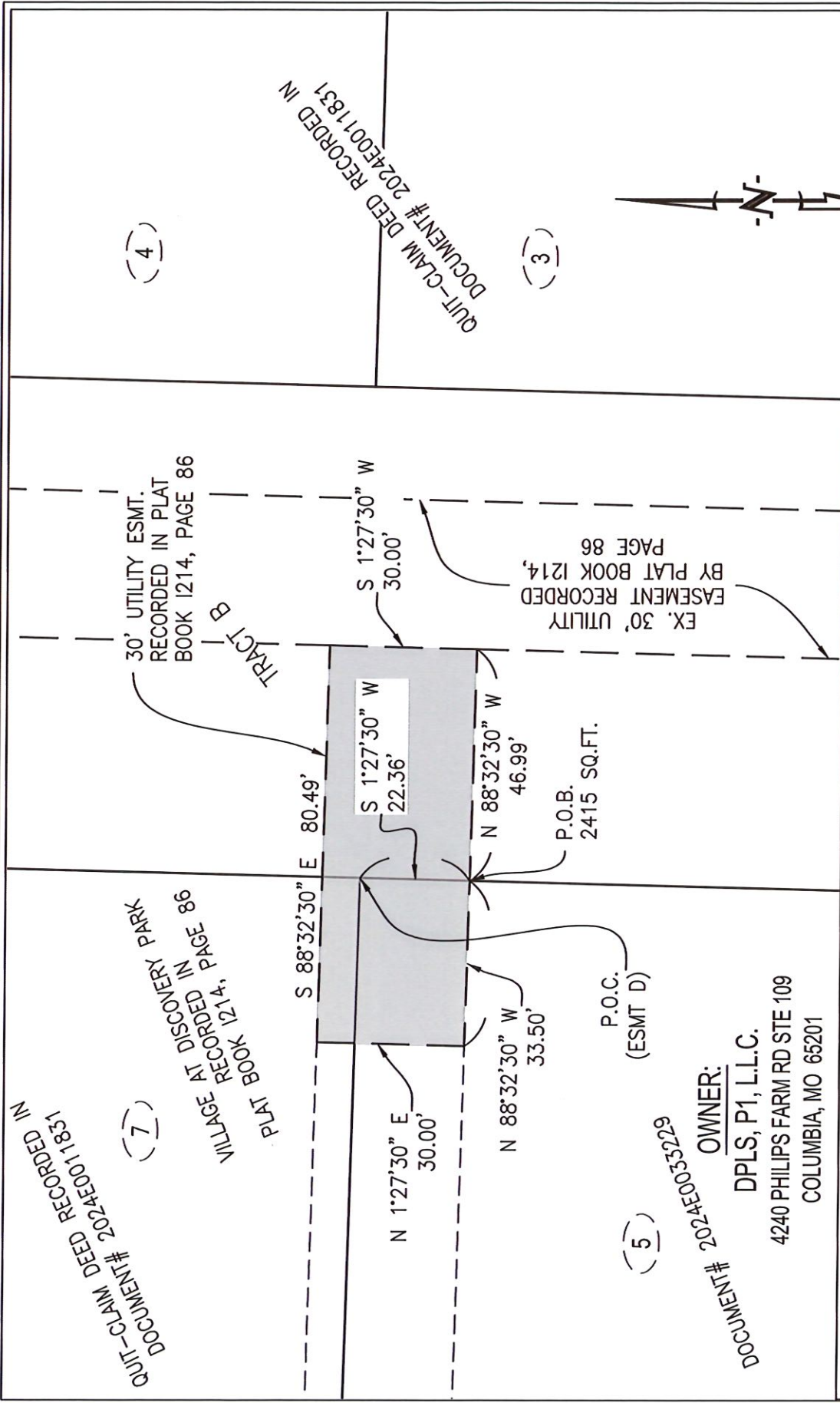
DAVID W. BORDEN, PLS-2002000244
7/24/25

DATE

EXHIBIT A

SHEET 1 OF 2

CROCKETT ENGINEERING CONSULTANTS 1000 W. Nifong Blvd. Building 1 Columbia, Missouri 65203 (573) 447-0292 www.crockettengineering.com	CORPORATE NUMBER 2000151304	UTILITY EASEMENT DESC. VACATING A 30' UTILITY EASEMENT-VILLAGE AT DISCOVERY PARK, LOCATED IN S30-T48N-R31W LEE'S SUMMIT, JACKSON COUNTY, MISSOURI
	DATE: 7/24/2025	
	PROJECT: 230286	



CROCKETT		SEWER EASEMENT DESC.	
ENGINEERING CONSULTANTS		CORPORATE NO: 2000151304	
1000 W. Nifong Blvd., Building 1		DATE: 7/24/2025	SCALE: 1" = 30'
Columbia, Missouri 65203		PROJECT: 230286	DRAWN BY: JWS
(573) 447-0292		A 30' PRIVATE SEWER EASEMENT - VILLAGE AT DISCOVERY PARK, LOCATED IN S30-T48N-R31W	
www.crockettengineering.com		LEES SUMMIT, JACKSON COUNTY, MISSOURI	