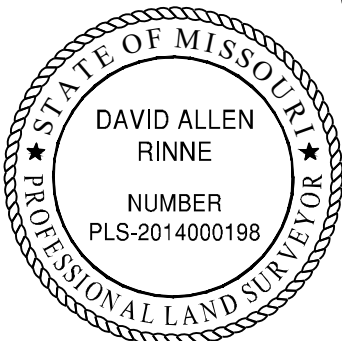
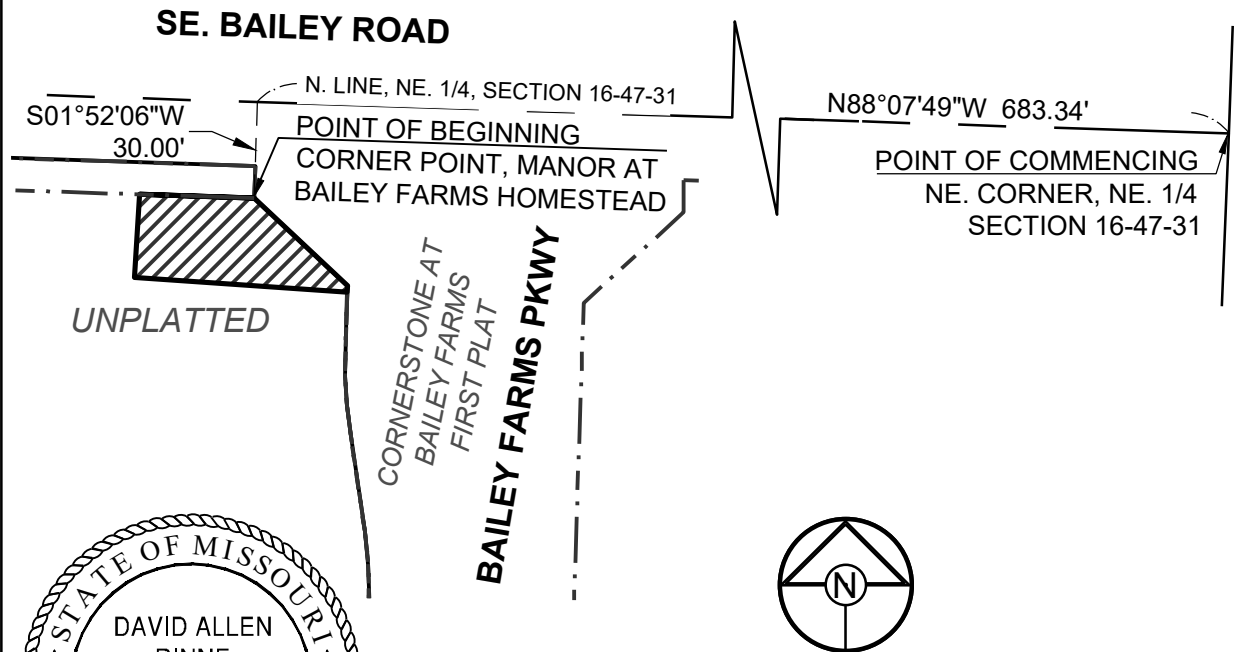


EXHIBIT A

DESCRIPTION:

Part of the Northeast One-Quarter of Section 16, Township 47 North, Range 31 West, in the City of Lee's Summit, Jackson County, Missouri, being more particularly described as follows:

Commencing at the Northeast corner of the said Northeast One-Quarter; thence along the North line of the said Northeast One-Quarter, North 88 degrees 07 minutes 54 seconds West, a distance of 683.34 feet; thence South 01 degrees 52 minutes 06 seconds West, a distance of 30.00 feet to a corner point on West road right-of-way as platted in CORNERSTONE AT BAILEY FARMS, FIRST PLAT, a subdivision in the said City of Lee's Summit; thence along said West right-of-way line for the following two courses, South 46 degrees 43 minutes 19 seconds East, a distance of 40.00 feet; thence South 01 degrees 52 minutes 06 seconds West, a distance of 1.94 feet; thence North 86 degrees 04 minutes 47 seconds West, a distance of 66.71 feet; thence North 03 degrees 55 minutes 13 seconds East, a distance of 26.02 feet; thence South 88 degrees 07 minutes 54 seconds East, a distance of 35.73 feet, said point being the Point of Beginning, and containing 0.0322 acres, more or less.



David Allen Rinne, P.L.S.
MO# PLS-2014000198

DRAWN BY:	JWT
CHECKED BY:	SCH
DATE:	07/02/2025
PROJECT NO:	25-041
SCALE:	1" = 60'
SHEET	1



SCHLAGEL

ENGINEERS PLANNERS SURVEYORS LANDSCAPE ARCHITECTS

14920 West 107th Street • Lenexa, Kansas 66215

www.schlagelassociates.com • (913) 492-5158 • Fax: (913) 492-8400

Missouri State Certificates of Authority

#E2002003800-F #LAC2001005237 #LS2002008859-F

PROPERTY EXHIBIT