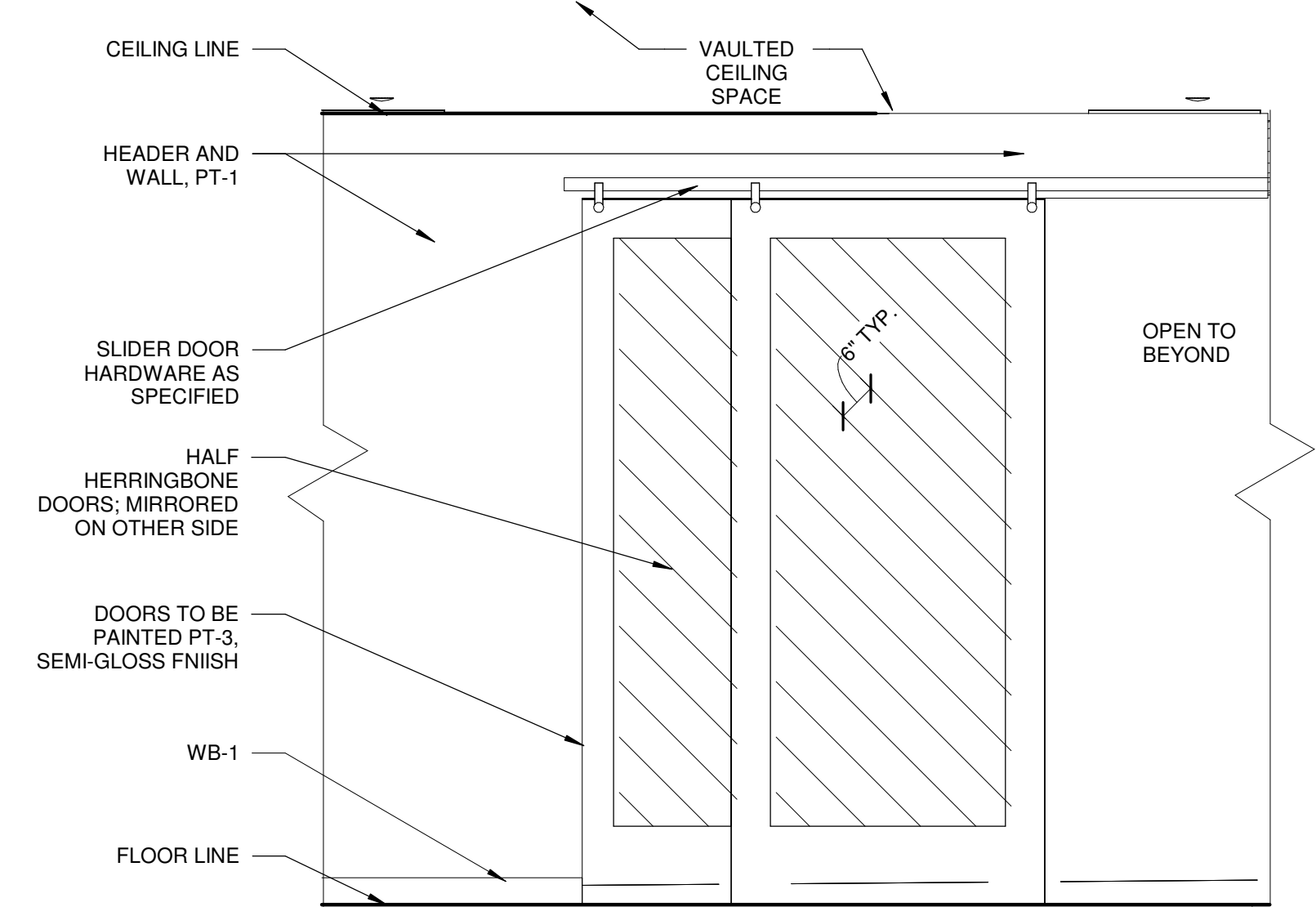
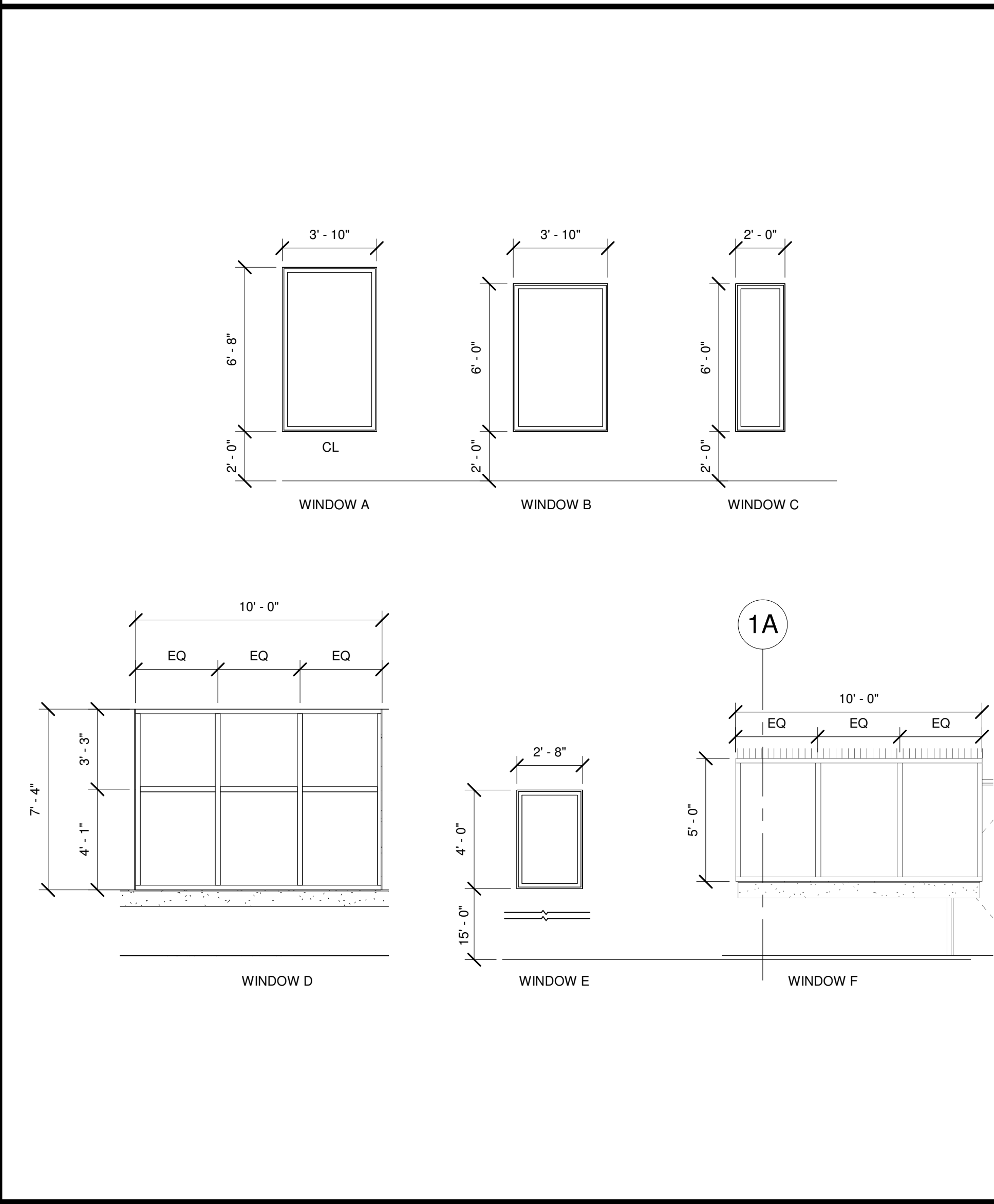
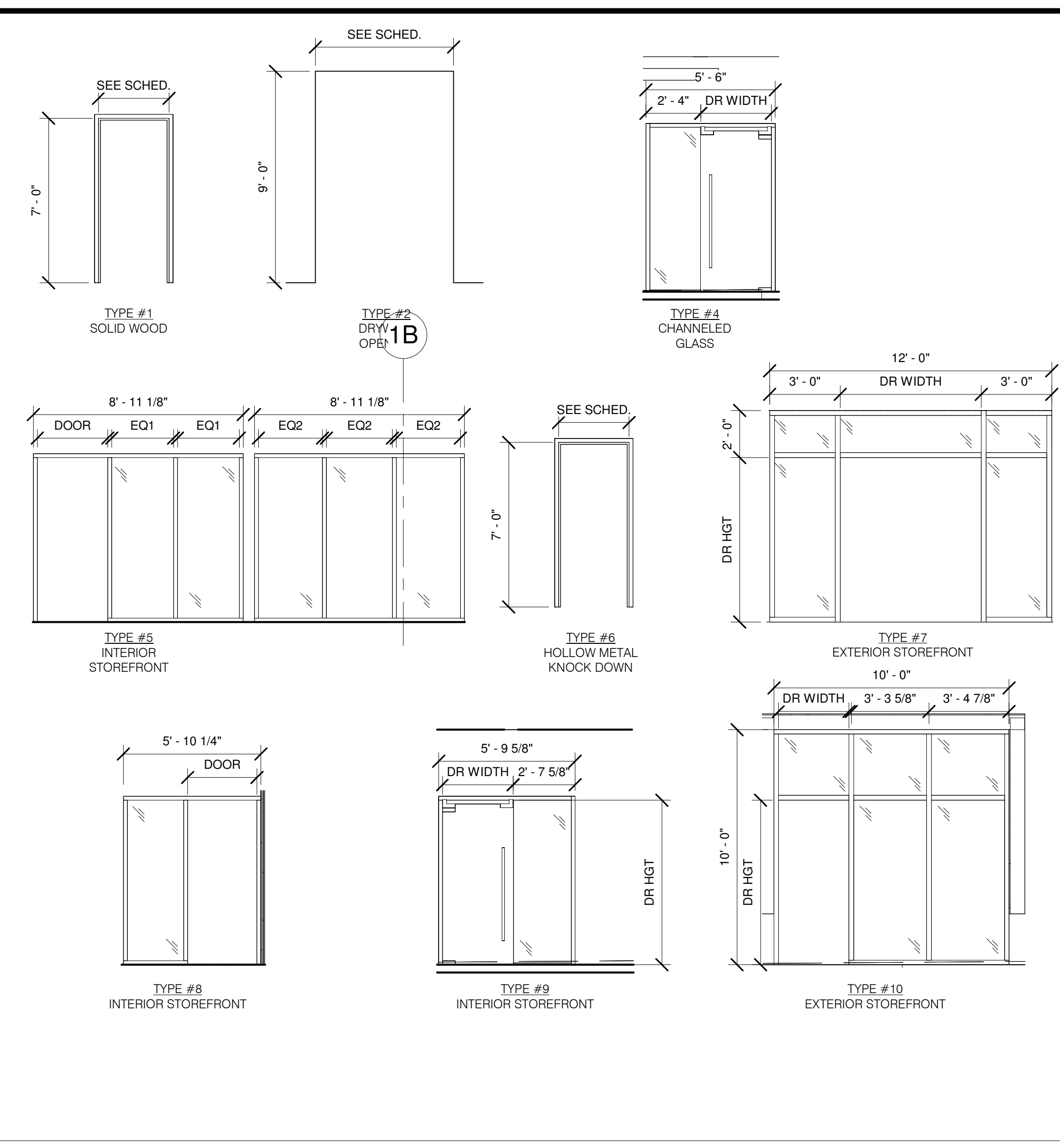


WINDOW ELEVATIONS



1 ENLARGED SLIDER DOOR
SCALE: 1/2" = 1'-0"

FRAME TYPES



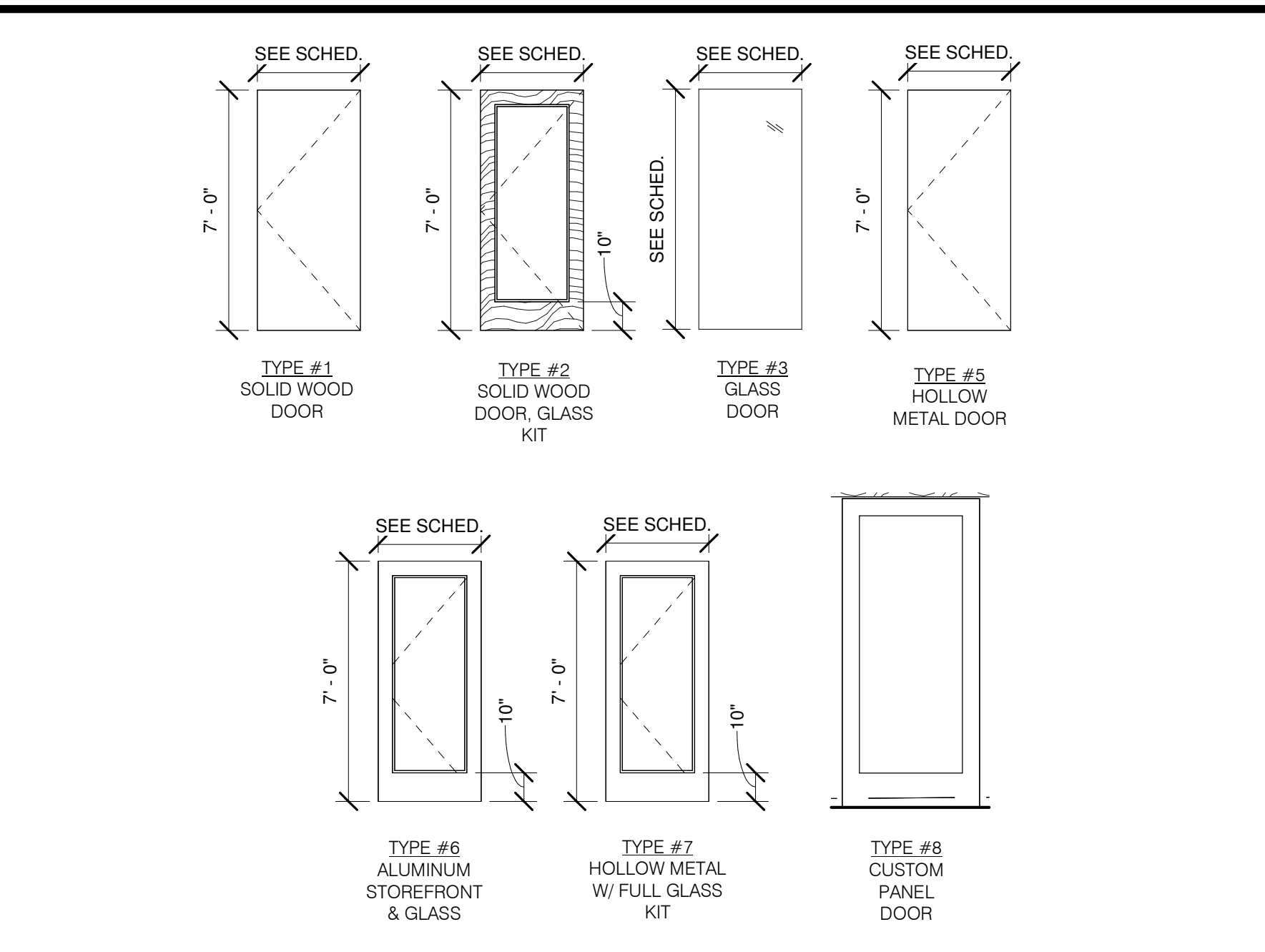
DOOR SCHEDULE

	SIZE			DOOR			FRAME			HARDWARE		REMARKS
	WIDE	HGT	THICK	TYPE	FINISH	RTG	TYPE	FINISH	RTG	TYPE	FINISH	
101A	6'-0"	7'-0"	1 3/4"	6	TBD	N/A	7	TBD	N/A	8	US32D	(2) 3'-0" PAIR DOORS
101B	6'-0"	7'-0"	1 3/4"	6	PT-3/GLASS	N/A	7	TBD	N/A	3	US32D	(2) 3'-0" PAIR DOORS
103	3'-0"	7'-0"	1 3/4"	2	ST-1/GLASS	N/A	1	PT-2	N/A	2	MB	
104	3'-0"	7'-0"	1 3/4"	1	ST-1	N/A	1	PT-2	N/A	1	MB	
105	3'-0"	7'-0"	1 3/4"	5	P-2	N/A	6	PT-2	N/A	6	MB	
106	3'-0"	7'-0"	1 3/4"	2	ST-1/GLASS	N/A	1	P-2	N/A	2	MB	
107	3'-0"	7'-0"	1 3/4"	2	ST-1/GLASS	N/A	1	P-2	N/A	2	MB	
108	3'-0"	7'-0"	1 3/4"	1	ST-1	N/A	1	P-2	N/A	1	MB	
109	3'-0"	7'-0"	1 3/4"	1	ST-1	N/A	1	P-2	N/A	4	MB	
110	6'-0"	7'-0"	1 3/4"	6	TBD	N/A	7	--	N/A	8	US32D	(2) 3'-0" PAIR DOORS
112	3'-0"	7'-0"	1 3/4"	2	ST-1/GLASS	N/A	5	TBD	N/A	3	MB	
112A	3'-0"	7'-0"	1 3/4"	2	ST-1/GLASS	N/A	1	P-2	N/A	1	MB	
113	6'-0"	7'-0"	1 3/4"	6	PT-1	N/A	6	TBD	N/A	10	US32	INSULATED DOOR/FRAME
114A	3'-0"	7'-0"	1 3/4"	2	ST-1/GLASS	N/A	1	P-2	N/A	3	MB	
114B	3'-0"	7'-0"	1 3/4"	7	TBD	N/A	6	TBD	N/A	9	US32D	FOB ENTRY; INSULATED DOOR/FRAME
116	3'-0"	7'-0"	1 3/4"	1	ST-1	N/A	1	P-2	N/A	3	MB	
117	3'-0"	7'-0"	1 3/4"	1	ST-1	N/A	1	P-2	N/A	3	MB	
118	3'-0"	7'-0"	1 3/4"	1	ST-1	N/A	1	PT-2	N/A	6	MB	
119	3'-0"	7'-0"	1 3/4"	7	TBD	N/A	6	TBD	N/A	11	US32D	FOB ENTRY; INSULATED DOOR/FRAME
121	3'-0"	7'-0"	1 3/4"	1	ST-1	N/A	1	P-2	N/A	2	MB	
124	3'-0"	7'-0"	1 3/4"	6	TBD	N/A	10	TBD	N/A	8	US32	
125	2'-10"	8'-10 7/8"	3	GLASS						NR	3	MB
127	3'-0"	7'-0"	1 3/4"	1	ST-1	N/A	1	P-2	N/A	6	MB	
128	3'-0"	7'-0"	2	ST-1/GLASS			1	PT-2	N/A	3	MB	
129	3'-0"	7'-0"	3	GLASS			9	--	N/A	3	MB	
130	3'-0"	7'-0"	3	GLASS			4	--	N/A	3	MB	
131A	3'-0"	7'-0"	1 3/4"	7	TBD	N/A	6	TBD	N/A	9	US32D	FOB ENTRY; INSULATED DOOR/FRAME
131B	3'-0"	7'-0"	1 3/4"	2	ST-1/GLASS	N/A	1	PT-2	N/A	3	MB	
132	2'-6"	7'-0"	1 3/4"	5	ST-1	N/A	6	P-2	N/A	6	MB	
133	3'-0"	7'-0"	1 3/4"	2	ST-1/GLASS	N/A	8	TBD	N/A	3	MB	

NOTES AND SPECIFICATIONS

- GENERAL NOTES:**
- DOOR, FRAME, HARDWARE, AND WINDOW MANUFACTURERS SHALL SUBMIT SHOP DRAWINGS FOR REVIEW.
 - DO NOT SCALE DRAWINGS.
 - CONTRACTOR TO FIELD VERIFY EXISTING CONDITIONS PRIOR TO STARTING WORK AND ADVISE THE OWNER'S REPRESENTATIVE IN WRITING OF ANY DISCREPANCIES.
 - REFER TO G051 FOR ARCHITECTURAL ABBREVIATIONS AS NEEDED.
- DOOR TYPE:**
- WOOD DOORS TO BE: SPEC. MASONRY ARCHITECTURAL GRAHAM MAIMAN SERIES OR SIMILAR, STAIN TO MATCH ST-1
 - HOLLOW METAL DOORS TO BE ALUMINUM AND PAINTED PT-2
 - STOREFRONT GLASS DOORS TO BE 3/8" TEMPERED GLASS
- FRAME TYPE:**
- WOOD TYPE FRAME BE: 4" FLAT STOCK PAINT GRADE WOOD TRIM, PAINTED P-2
 - HOLLOW METAL DOOR FRAME TO BE: TIMELY 2" HOLLOW METAL DOOR FRAME, PAINTED P-2
- HARDWARE TYPE:**
- HARDWARE SUPPLIER SHALL PROVIDE ALL HARDWARE ITEMS REQUIRED TO MAKE A COMPLETE AND FINISHED JOB INCLUDING HINGES, STOPS, LOCK SETS, LATCH SETS, COORDINATORS, PANIC DEVICES, HOLD OPENS, SMOKE GASKETS, WEATHERSTRIPPING, AND SILENCERS WHETHER SPECIFICALLY INDICATED ON HARDWARE LEGEND OR NOT.
 - WOOD AND METAL DOOR HARDWARE FINISH TO BE: BALDWIN SQUARE PASSAGE DOOR LEVER SET WITH SQUARE ROSETTE, MODEL # PSSQUCSR190 IN BLACK; ANSI/BHMA GRADE 2 REQUIREMENTS OR EQUAL
 - STOREFRONT DOOR HARDWARE TO BE EMTEK SQUARE 72" LONG DOOR PULL IN BLACK, MODEL #86188 OR OEQUAL
- GLASS TYPE:**
- GL-1: 1" INSULATED GLASS (EXTERIOR)
 - GL-2: 3/8" INTERIOR TEMPERED (TYP.)

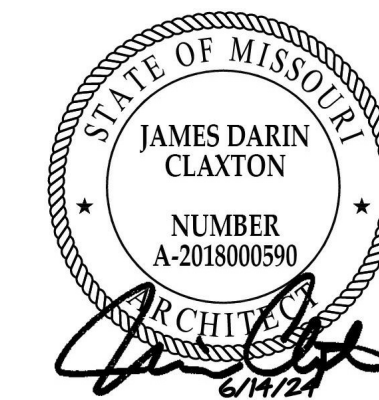
DOOR TYPES



HARDWARE LEGEND

- #1 PASSAGE LATCH**
- 1 LEVER HANDLE
 - 1 PASSAGE LATCH SET
 - 1 WALL STOP
 - 3 SILENCERS
- #2 ENTRY/EXIT OR OFFICE LOCKSET**
- 1 LEVER HANDLE
 - 1 OFFICE LOCKSET
 - 1 WALL STOP
 - 3 SILENCERS
- #3 PUSH / PULL**
- 1 PUSH PULL SET
 - 1 CLOSER W/ OVERHEAD STOP
 - 1 KICK PLATE
 - 3 SILENCERS
- #4 PRIVACY LOCKSET**
- 1 LEVER HANDLE
 - 1 PRIVACY LOCKSET
 - 1 CLOSER
 - 1 DOOR STOP
 - 3 SILENCERS
- #5 SLIDING DOOR LOCKET (EA LEAF)**
- BYPASS SYSTEM
 - HANGER STYLE: GARRICK
 - HARDWARE FINISH: BLAC
 - TRACK STYLE: FLAT TRACK (18" L)
 - STANDARD STOP
 - FLOOR GUIDE
 - KIT FINISH: FLAT BLACK (8" H)
 - FRONT HANDLE: BLACK (22" L)
 - BACK HANDLE: MODERN FLUSH BLACK
 - 1 THUMB TURN LOCK AND DUSTPROOF STRIKE (SN FINISH)
 - REFER TO RUSTICAHARDWARE.COM
- #6 STORAGE**
- 1 STORAGE LEVER
 - 1 LOCK SET
 - 1 CLOSER W/ OVERHEAD STOP
 - 3 SILENCERS
 - 1 KICK PLATE
- #7 GARAGE DOOR**
- MOTORIZED OPERATOR
 - PROVIDED BY MANUFACTURER, POWER AND ACCESS CONTROL BY ELECTRICAL ENGINEER AND T-COM CONTRACTOR.
- #8 EXIT LOCKSET (PAIR)**
- 1 LEVER HANDLE W/ PANIC LOCKSET
 - 1 ELECTRIC STRIKE WITH KEEPER (FAIL SAFE)
 - 1 REQUEST TO EXIT
 - 1 CLOSER W/ OVERHEAD STOP
 - 1 BUMPER STYLE THRESHOLD
 - 1 WEATHERSTRIPPING
 - 1 BRUSH SWEEP
 - 1 POWER SUPPLY
- #9 EXIT LOCKSET (SINGLE)**
- 1 LEVER HANDLE W/ PANIC LOCKSET
 - 1 ELECTRIC STRIKE WITH KEEPER (FAIL SAFE)
 - 1 REQUEST TO EXIT
 - 1 CLOSER W/ OVERHEAD STOP
 - 1 BUMPER STYLE THRESHOLD
 - 1 WEATHERSTRIPPING
 - 1 BRUSH SWEEP
 - 1 POWER SUPPLY
 - 1 FOB READER
- #10 STORAGE**
- 2 STORAGE LEVER
 - 1 LOCK SET
 - 2 CLOSER W/ OVERHEAD STOP
 - 1 KICK PLATE
 - 2 KICK PLATE
 - 1 BUMPER STYLE THRESHOLD
 - 2 BRUSH SWEEPS
 - 2 WEATHERSTRIPPING
- #11 PASSAGE LATCH**
- 1 LEVER HANDLE
 - 1 PASSAGE LATCH SET (ELEC.)
 - 1 CLOSER
 - 1 WALL STOP
 - 1 KICK PLATE
 - 1 BUMPER STYLE THRESHOLD
 - 1 BRUSH SWEEP
 - 1 WEATHERSTRIPPING
 - 1 POWER SUPPLY
 - 1 FOB READER
- #12 SLIDING DOOR**
- 1 BAR PULL HANDLE
 - 1 FLOOR GLIDE
 - 1 DUSTPROOF STRIKE
- #13 LUXER ONE HARDWARE**
- LUXER ONE PACKAGE ROOM SPECIALTY HARDWARE
 - COORDINATE WITH OWNER ON EXACT SPECIFICATIONS
- NOTE: PROVIDE SUBMITALS TO DESIGNER FOR APPROVAL**

EVREN APARTMENTS
NEW CONSTRUCTION
EVREN APARTMENTS CLUBHOUSE
LEE'S SUMMIT, MISSOURI
PERMIT SET

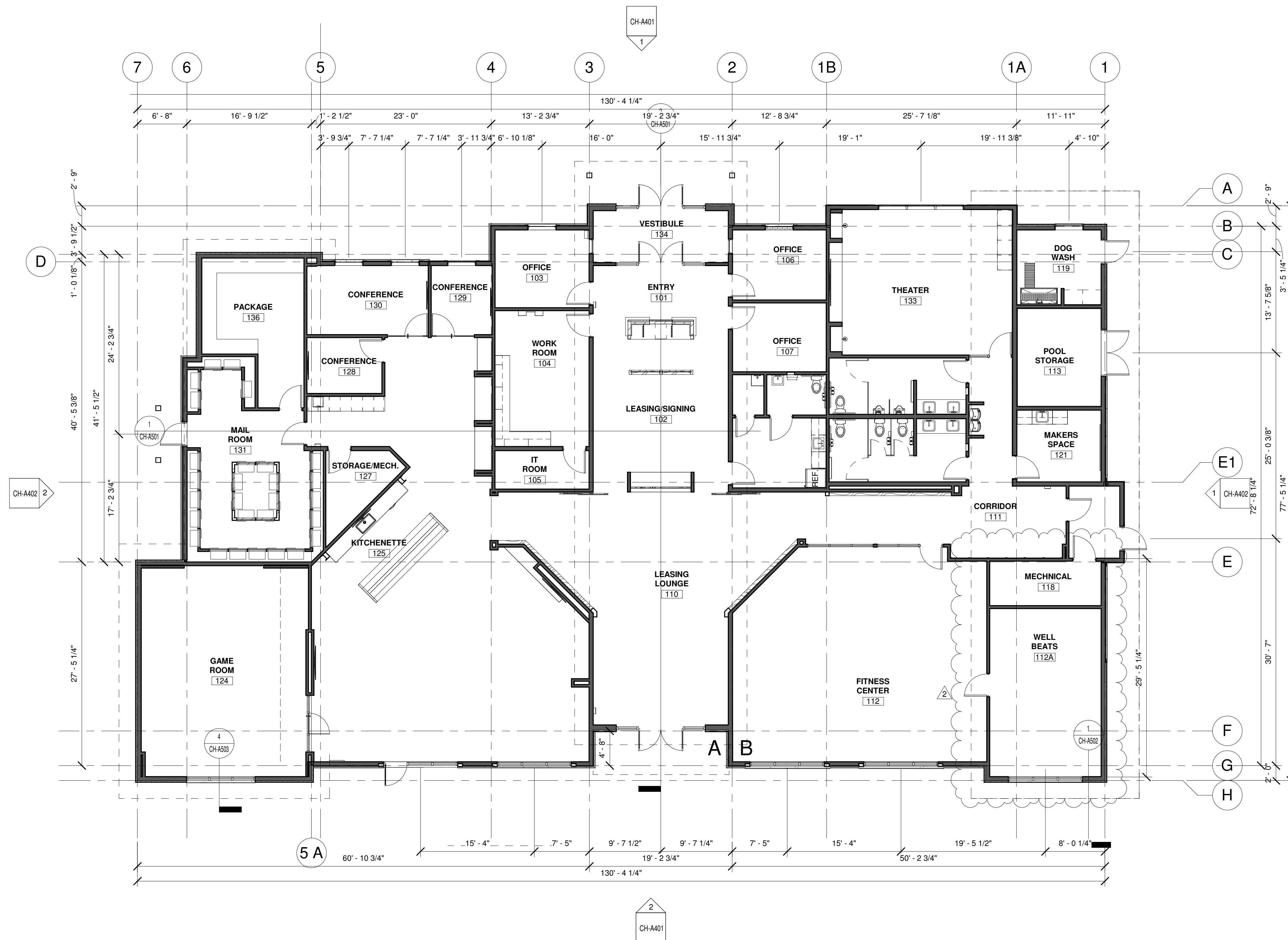


MD PROJECT #:	24097
DRAWN BY:	CR
CHECKED BY:	RB JS
PREPARED BY:	RB JS
DATE:	06/14/2024
REVISION #	DESCRIPTION
2	ADDENDUM 1

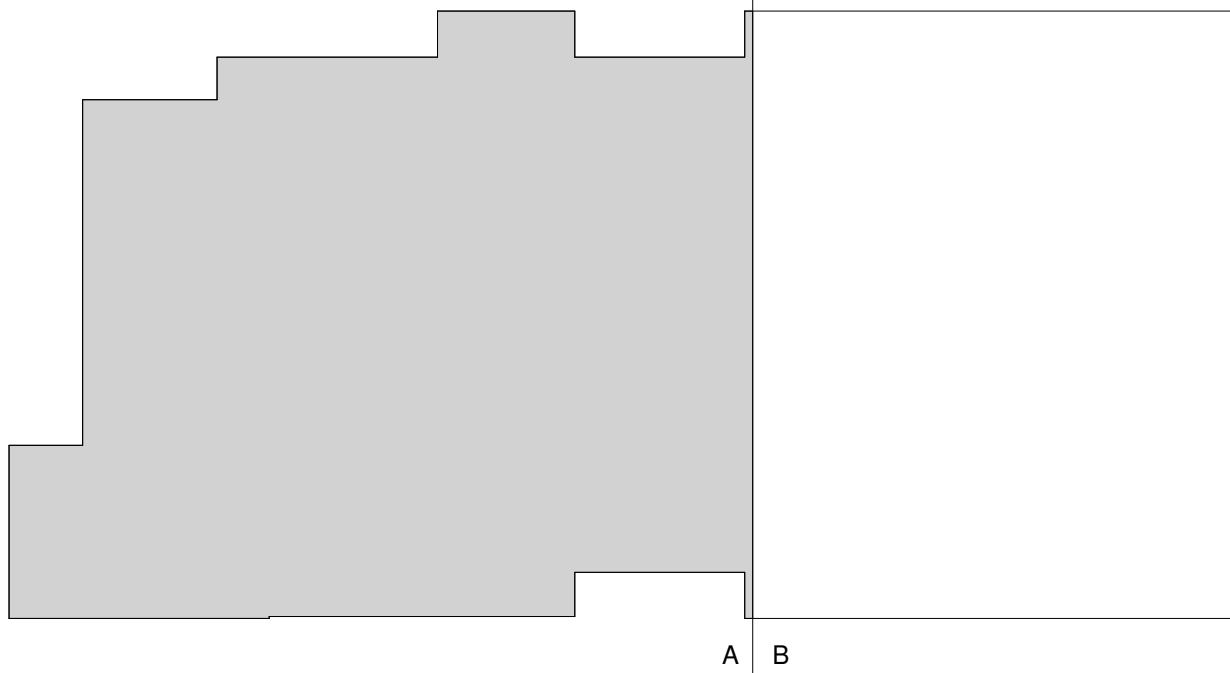
ALL IDEAS, DESIGNS AND PLANS (ORIGINAL WORKS OF AUTHORSHIP) FIXED IN A TANGIBLE MEDIUM OF EXPRESSION, INDICATED OR PRESENTED BY THESE DRAWINGS AND DOCUMENTS ARE OWNED BY, AND ARE THE PROPERTY OF, MITSCH DESIGN. ALL RIGHTS RESERVED, EXCEPT FOR USES EXPRESSLY PERMITTED IN WRITING.

CONSTRUCTION PLAN - OVERALL

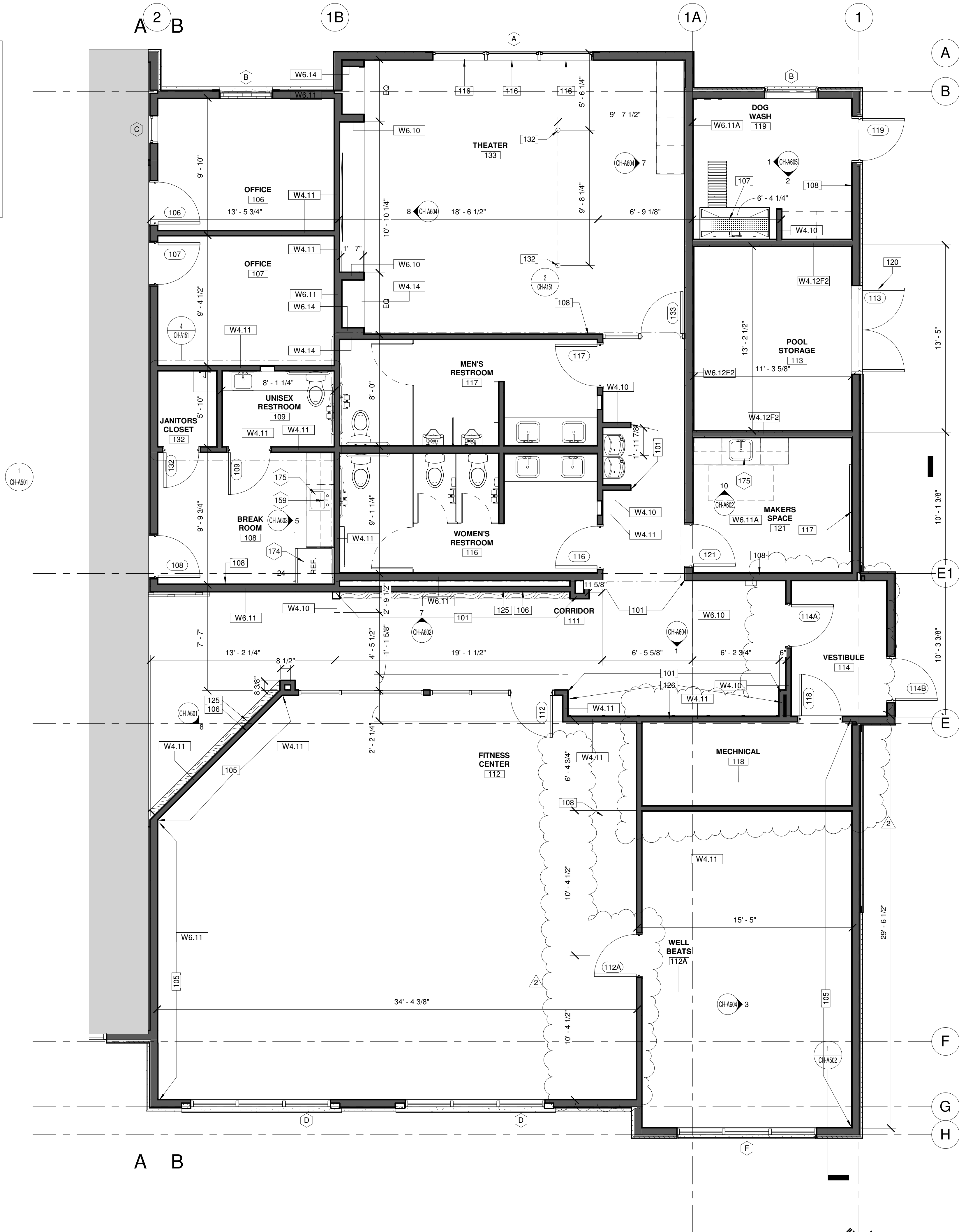
CH-A101



1 CONSTRUCTION PLAN -OVERALL
SCALE: 1/8" = 1'-0"



KEY PLAN
SCALE: NTS



CONSTRUCTION PLAN LEGEND

- NOT IN CONTRACT, IF APPLICABLE
- PARTIAL HEIGHT WALL
- NEW CONSTRUCTION ITEM
- XXXX WALL TYPE
- X WINDOW TYPE

GENERAL CONSTRUCTION NOTES

- A. REFER TO SHEET CH-A000 WALL TYPES AND CH-A001 FOR DOOR AND WINDOW TYPES.
- B. PROVIDE BLOCKING IN WALLS TO ACCOMMODATE ALL CASEWORK AND WALL MOUNTED EQUIPMENT.
- C. REFER TO ELECTRICAL LOCATION PLANS FOR MORE INFORMATION.
- D. ALL WORK IS TO BE COMPLETED IN STRICT ACCORDANCE WITH ALL APPLICABLE CODES, ORDINANCES, RULES, REGULATIONS AND STANDARDS, INCLUDING, BUT NOT LIMITED TO: THE AMERICANS WITH DISABILITIES ACT (ADA), INTERNATIONAL BUILDING CODE, AND APPLICABLE TRADE STANDARDS. ALL APPLICABLE RULES AND REGULATIONS ARE TO BE THE MOST CURRENT ADOPTED EDITIONS.
- E. THE CONTRACTOR IS RESPONSIBLE FOR FIELD VERIFYING ALL CONDITIONS AND DIMENSIONS PRIOR TO THE START OF WORK. REPORT ANY DISCREPANCIES TO THE ARCHITECT/DESIGNER IMMEDIATELY.
- F. THE CONTRACTOR IS RESPONSIBLE FOR OBTAINING ALL STATE AND LOCAL PERMITS REQUIRED FOR COMPLETION OF THIS PROJECT.
- G. ALL WORK IS TO BE COORDINATED BY THE GENERAL CONTRACTOR TO ASSURE ADEQUATE FIT, FINISH, SYSTEM OPERATION, AND FULL COMPLETION OF THE WORK, INCLUDING SERVICE REQUIREMENTS OF THE OWNERS F.F.E.
- H. ALL DIMENSIONS ARE SHOWN ON THE DRAWINGS. ANY DIMENSIONS NOT SHOWN OR DEEMED QUESTIONABLE ARE TO BE VERIFIED WITH THE ARCHITECT/DESIGNER. DO NOT SCALE DIMENSIONS ON THE DRAWINGS. ALL DIMENSIONS ARE TO THE FACE OF NEW STUD, MASONRY/CONCRETE WALLS, CENTERLINE OF COLUMNS/WINDOWS, OR FINISH FACE OF EXISTING WALL UNLESS NOTED OTHERWISE.
- I. CONTRACTOR IS TO SIGN EACH SHOP DRAWING SUBMITTAL AFTER IT HAS BEEN REVIEWED, APPROVED, AND THE CONTRACTOR COORDINATION HAS BEEN PERFORMED.
- J. FINISHED DOOR OPENINGS IN NEW PARTITIONS SHALL BE SET 4" FROM ADJACENT PERPENDICULAR PARTITIONS, UNLESS OTHERWISE NOTED.
- K. ALL FINISH CARPENTRY IS TO BE COMPLETED IN STRICT ACCORDANCE WITH A.W.I. STANDARDS, PREMIUM GRADE.
- L. ALL FIRE EXTINGUISHER CABINET LOCATIONS ARE TO BE COORDINATED WITH THE CONTRACTOR, DESIGNER AND THE LOCAL FIRE OFFICIALS PRIOR TO INSTALLATION.
- M. CONTRACTOR(S) SHALL PROVIDE ALL NECESSARY LABOR, MATERIALS, AND EQUIPMENT FOR THE WORK IN THESE DOCUMENTS, UNLESS CLEARLY NOTED "NOT IN CONTRACT" (N.I.C.).
- N. ALL PLUMBING ITEMS AND/OR EQUIPMENT ITEMS ARE TO BE COORDINATED AND VERIFIED WITH INTERIOR ELEVATIONS PRIOR TO ROUGH-IN. ANY DISCREPANCIES SHALL BE COORDINATED WITH THE DESIGNER.
- O. REFER TO CH-G052 FOR MOUNTING HEIGHTS ON ALL TOILET ACCESSORIES AND FIXTURES AS REQUIRED.
- P. SUBMIT THE REQUIRED NUMBER OF SUBMITTALS FOR DESIGNER REVIEW AND APPROVAL PLUS ONE EXTRA COPY FOR DESIGNERS RECORDS.
- CONTRACTOR TO INSTALL MAXIMUM OCCUPANCY SING FOR THE CLUBHOUSE ASSEMBLY AREAS AND POOL/POOL DECK.

CONSTRUCTION PLAN KEYNOTES

- 101 ALIGN.
- 105 MIRRORS IN THIS LOCATION TO BE 7'-0" TALL; MOUNTED 1'-0" AFF; CUT EACH GLASS PANEL TO NO GREATER THAN 4'-0" WIDE; EACH PANEL TO BE EQUAL IN SIZE; TREAT EACH EXPOSED MIRROR EDGE WITH 1/2" METAL CHANNEL FRAME.
- 106 STAIN GRADE OAK PLYWOOD FRAMING FOR FUTURE GREEN WALL IN THIS LOCATION
- 107 DOG WASH TO BE: GROOMER'S BEST ADA WALK-THRU TUB 24" D X 58" W
- 108 INSTALL COAT HOOKS IN THIS LOCATION. SPEC: DESIGN HOUSE, DOUBLE HAT AND COAT HOOK 3", SATIN NICKEL, #202879 (ROOM 121 - QTY. 3, ROOM 112 - QTY. 6, ROOM 118 - QTY. 6, ROOM 109 - QTY. 1)
- 116 BOTTOM WINDOW IN THIS LOCATION TO RECEIVE ROLLER SHADE. HUNTER DOUGLAS, DESIGNER SERIES DUOLITE, AKRON, PASSIVE.
- 117 4'-0" X 6'-0" PEG BOARD MOUNTED TO WALL IN THIS LOCATION. FINISHES EDGES WITH TRIM, PAINTED PT-2. CENTERED ON WALL AND MOUNTED 4'-0" AFF. PROVIDE BLOCKING AS REQUIRED.
- 120 SIGNAGE ON EXTERIOR DOOR TO STATE 'POOL CHEMICAL STORAGE' IN ACCORDANCE TO NFPA 704. PROVIDE 704 PLACARD ON DOOR FACE.
- 125 WALL MOUNTED EQUIPMENT IN THIS LOCATION, SEE ELEVATION FOR MOUNTING HEIGHTS AND DETAILS
- 126 INSTALL WALL BASE AFTER THE INSTALLATION OF THE BANQUETTE IN THIS LOCATION BY FURNITURE PROVIDER
- 132 FLOOR CORE IN THIS LOCATION. REFER TO MEP FOR MORE INFORMATION.

EQUIPMENT KEYNOTES

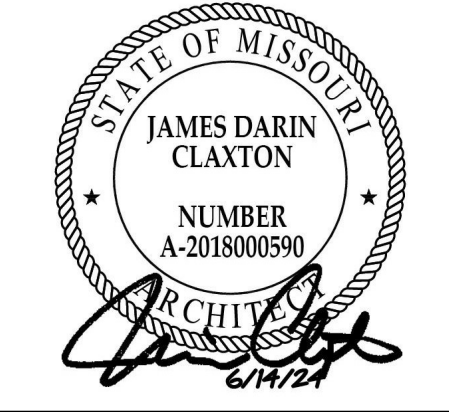
- 159 BREAKROOM FAUCET TO BE: ELKAY ALLURE SINGLE HOLE KITCHEN FAUCET WITH LEVER HANDLE, LK79218SS, STAINLESS STEEL FINISH
- 174 KITCHEN REFRIGERATOR TO BE: SUMMIT APPLIANCES, BKRF18SS, STAINLESS STEEL FINISH, HANDLE TO BE ON RIGHT SIDE OF REFRIGERATOR
- 175 KITCHEN SINK TO BE: KOHLER, VAULT 25" X 22" SINGLE BOWL, DUAL UNDERMOUNT KITCHEN SINK WITH SINGLE FAUCET HOLE, K-3894, STAINLESS STEEL FINISH



200 S. Rangeline Rd. | Suite 226
Carmel, Indiana 46032
317.573.2222
www.mitschdesign.com



EVREN APARTMENTS
NEW CONSTRUCTION
EVREN APARTMENTS CLUBHOUSE
LEE'S SUMMIT, MISSOURI
PERMIT SET



MD PROJECT #:	24097
DRAWN BY:	CR
CHECKED BY:	RB JS
PRELIMINARY PRICING SET	-
PERMIT SET	06/14/2024
REVISION SCHEDULE	
#	DATE DESCRIPTION
1	01/14/2025 CITY RESPONSE
2	03/07/2025 ADDENDUM 1

ALL IDEAS, DESIGNS AND PLANS (ORIGINAL WORKS OF AUTHORSHIP) FIXED IN A TANGIBLE MEDIUM OF EXPRESSION, INDICATED OR PRESENTED BY THESE DRAWINGS AND DOCUMENTS ARE OWNED BY, AND ARE THE PROPERTY OF, MITSCH DESIGN. ALL RIGHTS RESERVED. EXCEPT FOR USES EXPRESSLY PERMITTED IN WRITING.

CONSTRUCTION PLAN -
SIDE B

CH-A103