

KEYNOTES

- 1 NEMA 3R TELECOMM TERMINAL CABINET FOR TELECOMM SERVICE TO BUILDING. PROVIDE 4" CONDUIT TO DISTRIBUTION POINT DIRECTED BY SERVICE PROVIDER.
- 2 WALL MOUNTED PHOTOCELL FOR CONTROL OF BREEZEWAY LIGHTS. INTERIOR CORRIDOR LIGHTS SHALL NOT BE ROUTED THROUGH PHOTOCELL AND SHALL BE ON AT ALL TIMES. PROVIDE UNSWITCHED CONDUCTOR ROUTED AHEAD OF PHOTOCELL FOR EMERGENCY LIGHTING, EXIT LIGHTING AND BATTERY BACK-UP.
- 3 PROVIDE INTERMATIC MODEL ET2805C ASTRONOMIC 1-CIRCUIT ELECTRONIC CONTROL, 120 VOLT, SPST TIME SWITCH WITH INDOOR METAL ENCLOSURE TO CONTROL PARKING LOT LIGHTING. REFERENCE SITE PLAN FOR LIGHTS TO BE ROUTED THROUGH TIME SWITCH.

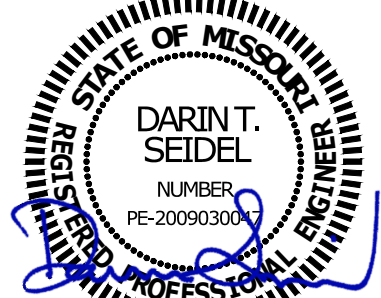
nspj  
ARCHITECTS

ARCHITECTURE  
LANDSCAPE  
ARCHITECTURE

P.913.831.1415  
NSPJARCH.COM

9415 NALL AVE., #300  
PRAIRIE VILLAGE,  
KANSAS, 66207

7/3/2025



A NEW APARTMENT COMMUNIT AT:

**DOUGLAS STATION**

NW SLOAN & NE SYCAMORE ST

LEE'S SUMMIT, MO 64086

DRAWING RELEASE LOG  
• 03/22/2024 100% CD Set  
• 03/22/24 50% CD Set  
• 04/19/24 90% CD Set

REVISIONS  
2 10/9/24 Revision 2

MISSOURI PE COA #2009003629

This drawing has been prepared by the Engineer, or under his supervision. This drawing is provided as an instrument of service to the Design/Engineer and is intended for use on this project only. Pursuant to the Architectural Works Copyright Protection Act of 1990, all drawings, specifications, ideas and designs, including the overall form, arrangement and composition of spaces and elements appearing herein, constitute the original, copyrighted work of the Designer/Engineer. Any reproduction, use, or disclosure of information contained herein without prior written consent of the Engineer is strictly prohibited. © 2024 BC Engineers, Inc.

BC ENGINEERS  
INCORPORATED

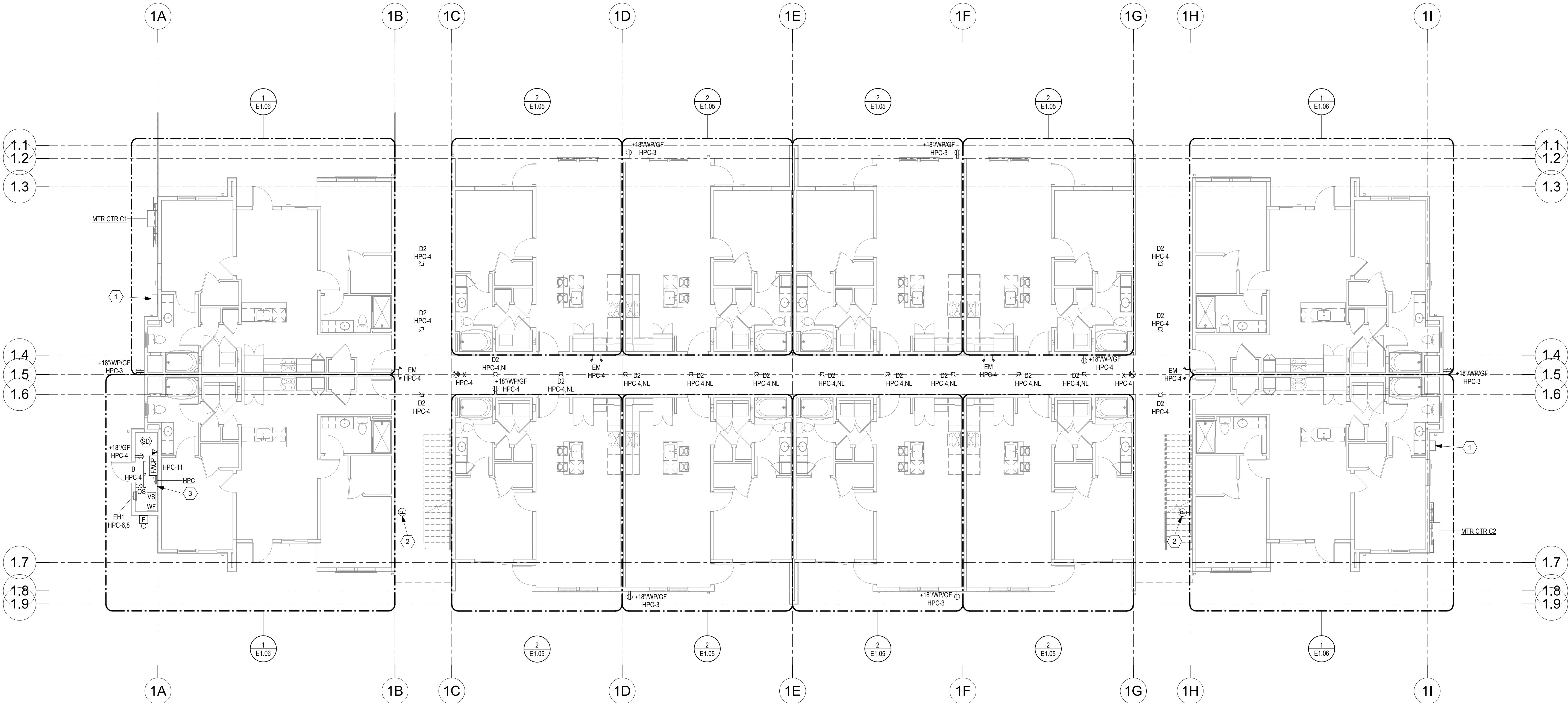
5720 Reeder Shawnee, KS 66203 (913)262-1772

JOB NO.  
**740623**  
DRAWN BY  
**DS/BK**  
CD SET/PERMIT

DATE  
**04.19.24**

SHEET NAME  
**LEVEL 1 ELECTRICAL PLAN  
BUILDING C**  
SHEET NO.

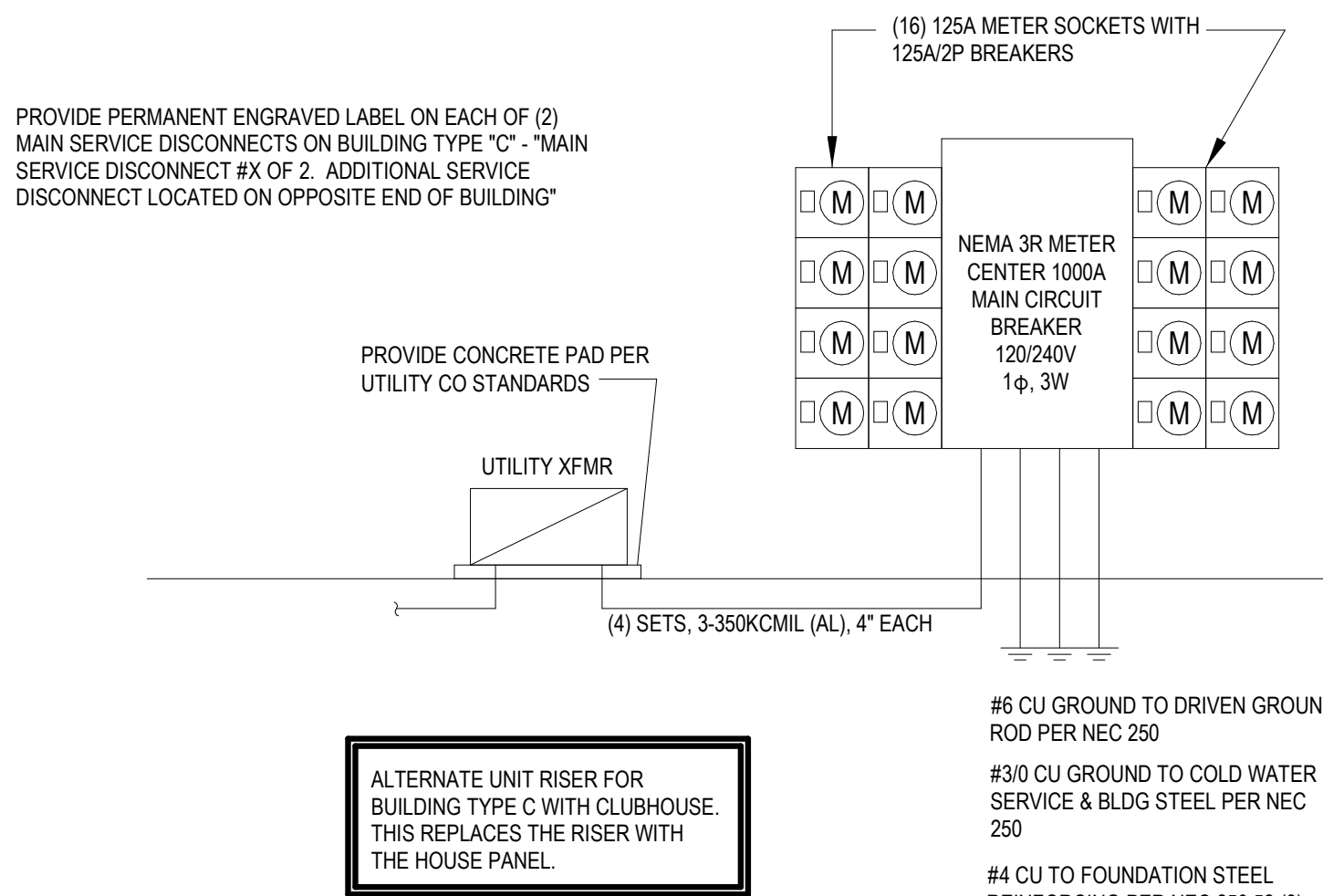
**E1.01C**



COORDINATE LOCATION OF WP/GFI RECEPTACLES WITH  
MECHANICAL CONTRACTOR. AT LEAST ONE 15 OR 20 AMP  
RECEPTACLE SHALL BE INSTALLED WITHIN 25'-0" OF ALL  
CONDENSING UNITS FOR SERVICE PER NEC 210.63

1 LEVEL 1 ELECTRICAL PLAN BUILDING C  
E1.01C 1/8" = 1'-0"






**UNIT A/C RATING CHART:**  
125A PANEL:  
≤50 = 22.000A  
≤50 = 10.000A

**UNIT FEEDER CHART:**  
125A PANEL:  
IF FEEDER DISTANCE IS LESS THAN 100' -10-1/0-1/0-2/0(A) SER CABLE  
IF FEEDER DISTANCE IS BETWEEN 100' AND 130' -2/0-2/0-2/0-1/0(A) SER CABLE  
IF FEEDER DISTANCE IS BETWEEN 130' AND 155' -3/0-3/0-3/0-1/0(A) SER CABLE  
IF FEEDER DISTANCE IS BETWEEN 155' AND 185' -4/0-4/0-4/0-2/0(A) SER CABLE  
IF FEEDER DISTANCE IS BETWEEN 180' AND 215' -2/0-2/0-2/0-3/0(A) SER CABLE  
IF FEEDER DISTANCE IS BETWEEN 215' AND 455' -3/0-3/0-3/0-4/0(A) SER CABLE  
IF FEEDER DISTANCE IS GREATER THAN 245' -500-500-3/0-2/0(A) SER CABLE

7/3/2025



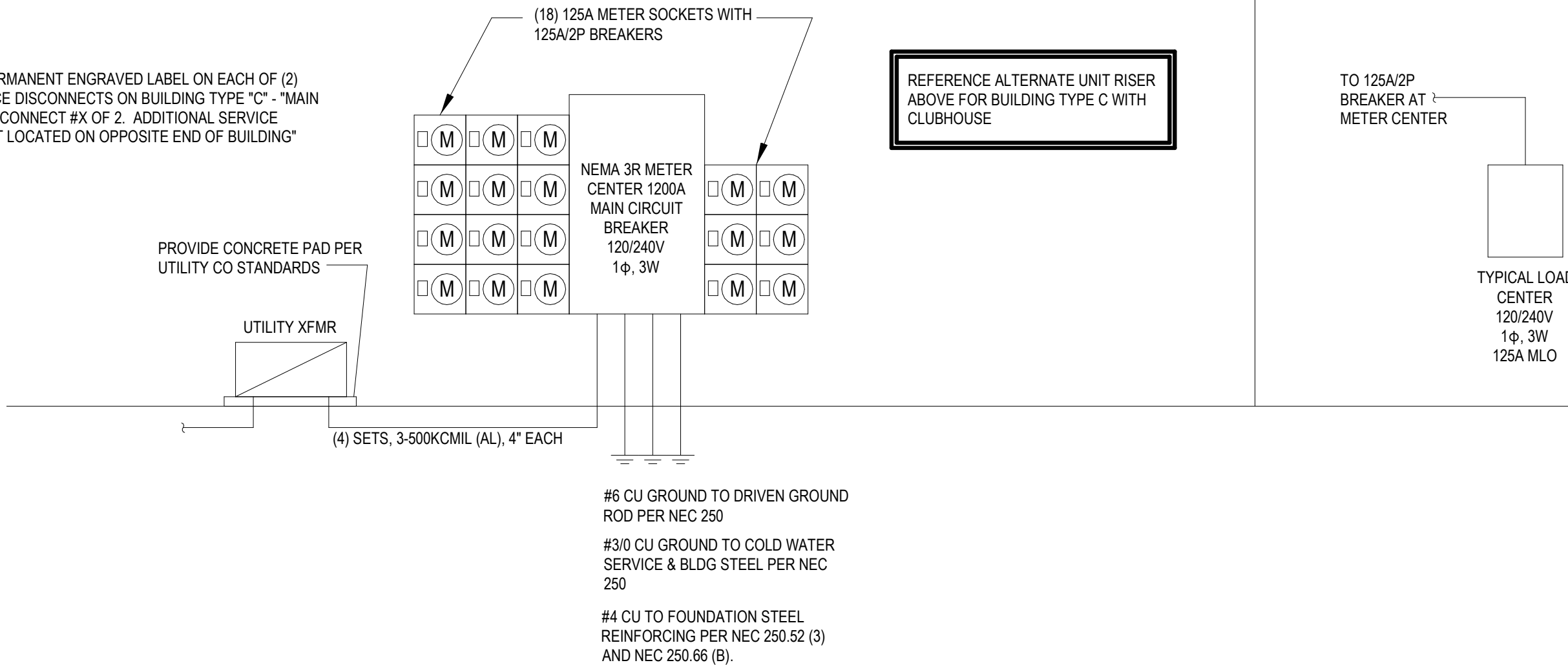
DARIN T. SEIDEL  
NUMBER  
PE-200903004

**UNIT A/C RATING CHART:**  
125A PANEL:  
<50° = 2.000A  
>50° = 10.000A

**UNIT FEEDER CHART:**  
125A PANEL:  
IF FEEDER DISTANCE IS LESS THAN 100' -1/0-1/0-1/0-2(A) SER CABLE  
IF FEEDER DISTANCE IS BETWEEN 100' AND 130'-2/0-2/0-2/0-2(A) SER CABLE  
IF FEEDER DISTANCE IS BETWEEN 130' AND 155'-3/0-3/0-3/0-4(A) SER CABLE  
IF FEEDER DISTANCE IS BETWEEN 155' AND 180'-4/0-4/0-4/0-2(A) SER CABLE  
IF FEEDER DISTANCE IS BETWEEN 180' AND 215'-250-250-250-3(A) SER CABLE  
IF FEEDER DISTANCE IS BETWEEN 215' AND 245'-300-300-300-4(A) SER CABLE  
IF FEEDER DISTANCE IS GREATER THAN 245'-350-350-350-250(A) SER CABLE

**UNIT A/C RATING CHART:**  
125A PANEL:  
≤50° = 2,000A  
≤50° = 10,000A

**UNIT FEEDER CHART:**  
125A PANEL:  
IF FEEDER DISTANCE IS LESS THAN 100' -10-10-10-2(A) SER CABLE  
IF FEEDER DISTANCE IS BETWEEN 100' AND 130' -20-20-20-1(A) SER CABLE  
IF FEEDER DISTANCE IS BETWEEN 130' AND 155 -30-30-30-1(A) SER CABLE  
IF FEEDER DISTANCE IS BETWEEN 155' AND 180 -40-40-40-2(A) SER CABLE  
IF FEEDER DISTANCE IS BETWEEN 180' AND 215 -50-50-50-2(30(A)) SER CABLE  
IF FEEDER DISTANCE IS BETWEEN 215' AND 245 -30-30-30-30(A) SER CABLE  
IF FEEDER DISTANCE IS GREATER THAN 245' -50-50-50-30(40(A)) SER CABLE



A NEW APARTMENT COMMUNIT AT:

# DOUGLAS STATION

NW SLOAN & NE SYCAMORE ST  
LEE'S SUMMIT, MO 64086

DRAWING RELEASE LOG

- 02/23/2024 100% DD Set
- 03/22/2024 50% CD Set
- 04/19/2024 90% CD Set

△ REVISIONS

|   |         |            |
|---|---------|------------|
| 2 | 10/9/24 | Revision 2 |
|---|---------|------------|

This drawing has been prepared by the Engineer, or under his supervision. This drawing is provided as an instrument of service by the Designer/Engineer and is intended for use on this project only. Pursuant to the Architectural Works Copyright Protection Act of 1990, all drawings, specifications, ideas and designs, including the overall form, arrangement and composition of spaces and elements appearing herein, constitute the original, copyrighted work of the Designer/Engineer. Any reproduction, use, or disclosure of information contained herein without prior written consent of the Engineer is strictly prohibited. © 2024 BC Engineers, Inc.

SHEET NAME  
**ELECTRICAL SCHEDULES &  
RISER BUILDING C**  
SHEET NO.

# E3.01C