

SUMMIT LAKES MIDDLE SCHOOL

3500 SW WINDEMERE DR
LEE'S SUMMIT, MO 64082

INTERCOMMUNICATION SYSTEM SPECIFICATION 275123 WIRELESS CLOCK SYSTEM SPECIFICATION 275313

CABLE AND CONDUIT SEPARATION DETAIL	
WIRE TYPE GROUPING	
GROUP A	MICROPHONES AND OTHER SENSITIVE WIRING (0 mV TO 100 mV)
GROUP B	LINE LEVEL WIRING (100 mV TO 10 V)
GROUP C	LOUDSPEAKER AND CONTROL WIRING (10 V TO 70 V)
GROUP D	TELEPHONE, VIDEO, CONTROL AND DIGITAL CIRCUITS
GROUP E	FIBER OPTIC CABLE






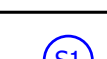
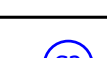

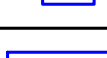
NOTE: THESE WIRING GROUPS MUST NEVER BE INTERMIXED WITHIN A GIVEN CONDUIT RUN.

MINIMUM CONDUIT SEPARATION BETWEEN GROUP TYPES					
	GROUP A	GROUP B	GROUP C	GROUP D	GROUP E
GROUP A	ADJACENT	6"	12"	12"	ADJACENT
GROUP B	-	ADJACENT	12"	6"	ADJACENT
GROUP C	-	-	ADJACENT	6"	ADJACENT
GROUP D	-	-	-	ADJACENT	ADJACENT
GROUP E	-	-	-	-	ADJACENT

NOTE: NINETY DEGREE CROSSING IN CLOSE PROXIMITY ARE ACCEPTABLE.

MINIMUM CONDUIT SEPARATION BETWEEN SYSTEMS WIRING AND OTHER SERVICES					
	GROUP A	GROUP B	GROUP C	GROUP D	GROUP E
DIMMER CONTROLLED LIGHTING	24"	12"	6"	12"	ADJACENT
SCR CONTROLLED SERVICES	24"	12"	6"	12"	ADJACENT
220/440V CIRCUITS	6"	6"	ADJACENT	ADJACENT	ADJACENT
ALL OTHER SERVICES	6"	6"	ADJACENT	ADJACENT	ADJACENT

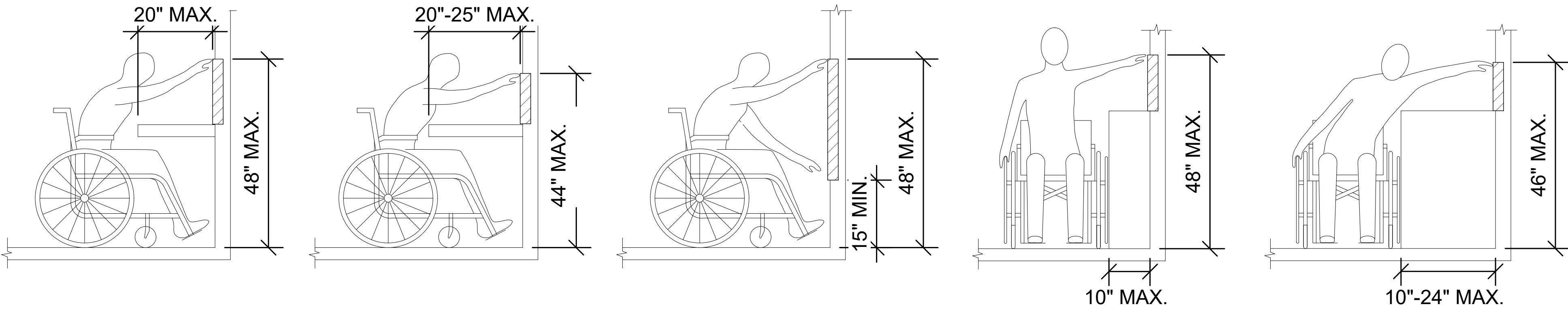
INTERCOM SYSTEM CABLE LEGEND			
LEGEND	USAGE	TECH #	DESCRIPTION
D	DATA / CONTROL	CAT6P-GR N	CATEGORY 6 CABLE, PLENUM
L	LINE LEVEL	22-02SP-BLK	1 PR 22 AWG, STRANDED, SHIELDED, PLENUM
S22	SPEAKER LEVEL	22-02SP-BLK	1 PR 22 AWG, STRANDED, PLENUM

INTERCOM SYSTEM DEVICE SCHEDULE				
SYMBOL	DESCRIPTION	MANUFACTURER	PART NO.	ROUGH-IN DESCRIPTION
	25V SPEAKER AMPLIFIER	CAREHAWK	DAF-100-25	SURFACE MOUNT TO WALL. PROVIDE 120VAC POWER.
	ADMINISTRATIVE PHONE	CAREHAWK	ADMIN7	SITS ON DESKTOP
	SINGLE SIDED, 12", ANALOG WALL CLOCK	SAPLING	SAL-4BS-12R-0	SURFACE MOUNT TO WALL
	WIRELESS MASTER CLOCK TRANSMITTER	SAPLING	SMA-250-1000-1	SURFACE MOUNT TO WALL, PROVIDE 120VAC POWER AND NETWORK CONNECTION
	DOUBLE DIAL, DIGITAL WALL CLOCK	SAPLING	SBL-315-254-4 R	SURFACE MOUNT TO DOUBLE GANG BACK BOX WITH DOUBLE SIDED BRACKET SAB-1BD-00S-0
	INTERCOM SERVER	CAREHAWK	CH2000IP	MOUNT IN CUSTOMER DATA RACK
	TOUCH SCREEN COMPUTER	CAREHAWK	MATC	SITS ON DESKTOP, PROVIDE 120VAC POWER
	DIGITAL CLOCK POWER SUPPLY	SAPLING	35-M015	POWER TRANSFORMER, SURFACE MOUNT TO WALL. PROVIDE 120VAC POWER AND CABLE PATH TO CLOCKS AS SHOWN
	ROUND CEILING SPEAKER	QUAM	SOLUTION1	MOUNTS IN ATC OR DRYWALL CEILING WITH HARDWARE PROVIDED. PROVIDE CABLE PATHS AS SHOWN.
	LAY-IN TIME CEILING SPEAKER	QUAM	SYSTEM 12VC	LAY IN ACT GRID IN PLACE OF TILE. PROVIDE CABLE PATHS AS SHOWN
	WALL MOUNT SPEAKER	QUAM	SYSTEM 3	SURFACE MOUNT TO WALL. PROVIDE CABLE PATH AS SHOWN
	HORN TYPE SPEAKER	QUAM	QH16T	SURFACE MOUNT TO WALL AND INSTALL WIRE GUARD OVER DEVICE. PROVIDE CABLE PATH AS SHOWN
	SECURITY SWITCHING MODULE	CAREHAWK	SS32IP	SURFACE MOUNT TO WALL, PROVIDE 120VAC POWER AND CABLE PATHS AS SHOWN

ABBREVIATIONS	DEFINITION
ACT	ACOUSTIC CEILING TILE
ACP	ACCESS CONTROL PANEL
ADA	AMERICAN DISABILITY ACT
A/E	ARCHITECT/ENGINEER
AFC	ABOVE FINISHED CEILING
AFCT	ABOVE FINISHED COUNTERTOP
AFF	ABOVE FINISHED FLOOR
AFG	ABOVE FINISHED GRADE
AWG	AMERICAN WIRE GAUGE
BFC	BELOW FINISHED CEILING
℄	CENTER LINE
DEMARC	TRANSITION POINT; OUTSIDE SERVICES & BUILDING SYSTEM
EC	ELECTRICAL CONTRACTOR
EF	ENTRANCE FACILITY (SEE DEMARC)
EFEI	ELECTRICAL FURNISHED ELECTRICAL INSTALLED
EIA	ELECTRONIC INDUSTRIES ALLIANCE
EOL	END OF LINE
EOR	ENGINEER OF RECORD
ER/MDF	EQUIPMENT ROOM / MAIN DATA FRAME CLOSET
EX	EXISTING
FACU	FIRE ALARM CONTROL UNIT
FBO	FURNISHED BY OTHERS
GC	GENERAL CONTRACTOR
GUI	GRAPHICAL USER INTERFACE
HR	HOMERUN
LAN	LOCAL AREA NETWORK
NIC	NOT IN CONTRACT
OFCL	OWNER FURNISHED, CONTRACTOR INSTALLED
OFE	OWNER FURNISHED EQUIPMENT
OFOL	OWNER FURNISHED, OWNER INSTALLED
RCP	REFLECTED CEILING PLAN
RFI	REQUEST FOR INFORMATION
RU	RACK UNIT
Rx	RECEIVER
TBD	TO BE DETERMINED
TFEI	TECH FURNISHED, ELECTRICAL INSTALLED
TIA	TELECOMMUNICATIONS INDUSTRY ASSOCIATION
TR/IDF	TELCOM ROOM/ INTERMEDIATE DATA FRAME CLOSET
Tx	TRANSMITTER
TYP	TYPICAL
UNO	UNLESS NOTED OTHERWISE

CONNECTOR ABBREVIATION LEGEND	
- NOT ALL USED -	
NOTE	DESIGNATION
EC45	NEUTRIK RUGGED RJ45 DATA ETHERCON TYPE, 8-PIN, SHIELDED, TYPICAL TIA-568B UNO
PHX	PHOENIX TYPE, TYPICAL 3-PIN, ADD SUFFIX WITH QTY OF PINS AS REQUIRED
PB	PUNCH BLOCK TYPE, TYPICAL 66BLOCK, ADD SUFFIX K-KRONE
PWR	LOW VOLTAGE POWER CONNECTION (TYPICALLY 12/24VDC), REFERENCE DETAILS FOR MORE INFORMATION
RJ45	RJ45 DATA TYPE, 8-PIN, TYPICAL TIA-568B UNO, ADD SUFFIX (S) FOR SHIELDED VERSION
TERM	TERMINAL BLOCK SCREW TYPE OR LARGE PHX TYPE CONNECTION
120V	TYPICAL 120VAC POWER CONNECTION, NOTED FOR REFERENCE ONLY, ALL TERMINATION TO 120VAC P.B.O. (ELECTRICAL CONTRACTOR)

SHEET INDEX	
SHEET NUMBER	DESCRIPTION
IC0.00	COVER SHEET
IC1.01A	MAIN LEVEL AREA A
IC1.01B	MAIN LEVEL AREA B
IC1.01C	MAIN LEVEL AREA C
IC1.01D	MAIN LEVEL AREA D
IC1.01E	MAIN LEVEL AREA E
IC1.01F	MAIN LEVEL AREA F
IC1.01G	MAIN LEVEL AREA G
IC2.00	SCHEMATIC DIAGRAM
IC2.01	SPEAKER WATTAGE CALCULATIONS
IC3.10	TYPICAL CONNECTOR DIAGRAMS
IC4.00	MOUNTING AND CONNECTION DETAILS



INSTALL ABOVE COUNTER
DEVICE AT 44" ABOVE
FINISHED FLOOR.

INSTALL ABOVE COUNTER
DEVICE AT 40" ABOVE
FINISHED FLOOR.


INSTALL DEVICE AT 18"
ABOVE FINISHED FLOOR.

INSTALL DEVICE AT 44"
ABOVE FINISHED FLOOR.

INSTALL DEVICE AT 42"
ABOVE FINISHED FLOOR.

ADA (AMERICAN DISABILITIES ACT) GUIDELINES - FRONT ACCESS


ADA GUIDELINES - SIDE ACCESS




The Power of Connection and Protection™

St. Louis, Missouri | Columbia, Missouri | Springfield, Missouri
Chicago, Illinois | Bloomington, Illinois | Indianapolis, Indiana
Denver, Colorado | Topeka, Kansas | Kansas City

www.techelectronics.com
1.800.TECH.789

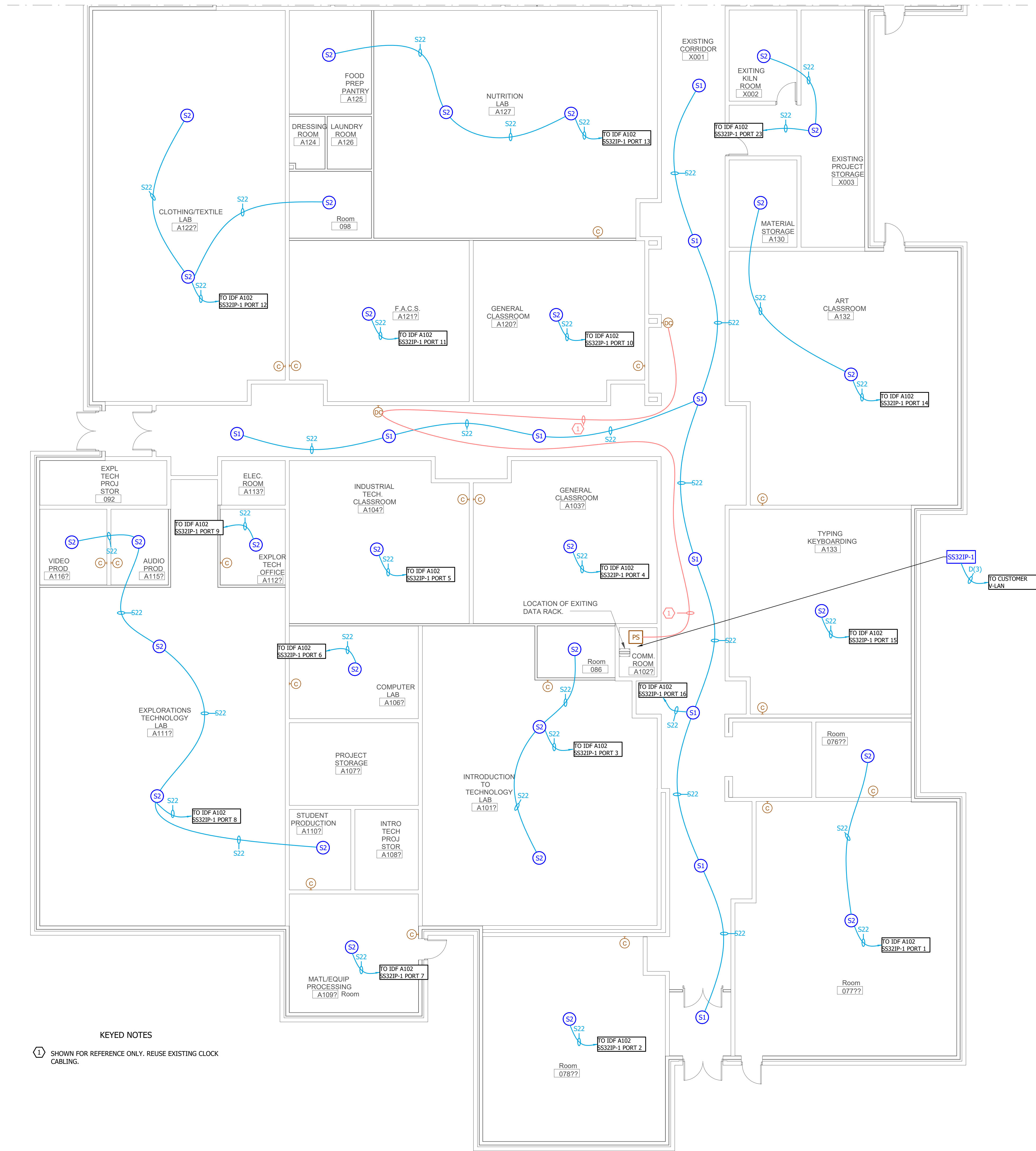


5720 Reeder Shawnee, KS. 66203 (913)262-1772



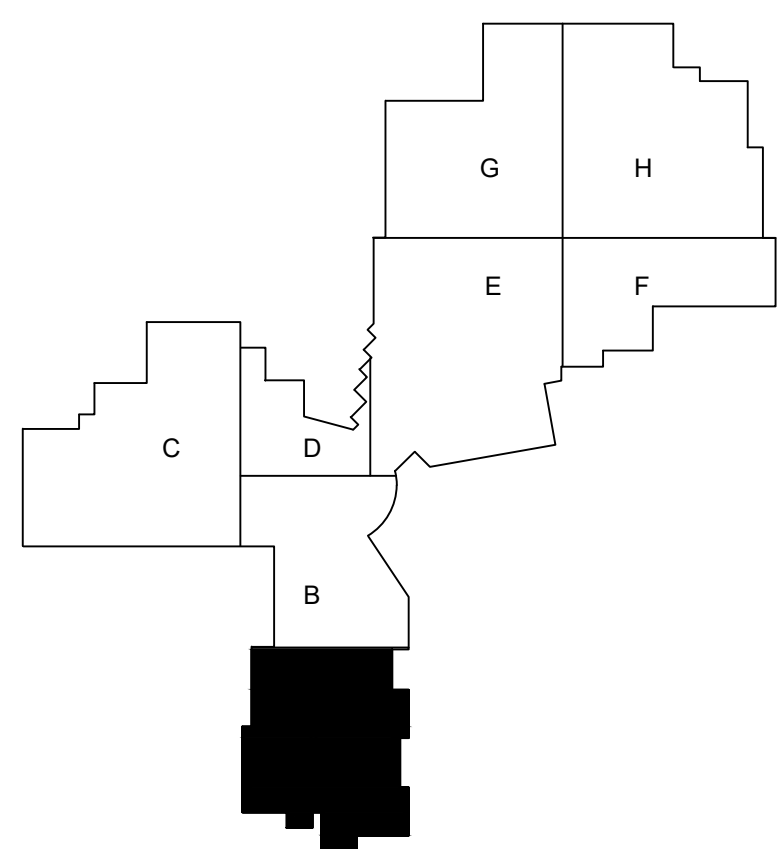
PROJECT NAME / CUSTOMER / LOCATION:	LEE'S SUMMIT R-7 SCHOOL DISTRICT SUMMIT LAKES MIDDLE SCHOOL 3500 SW WINDEMERE DR LEE'S SUMMIT, MO 64082
SYSTEM DESCRIPTION:	INTERCOMMUNICATION SYSTEM SYNCHRONIZED CLOCK SYSTEM

PROJECT MANAGER:	BEN MCVAY 314-705-0128
DESIGNER:	CHRIS WEHRMAN
DRAFTER:	CHRIS WEHRMAN
DRAWING #:	IC0.00
PROJECT JOB#:	PJ2503280014
DATE:	4/29/2025
ISSUED FOR:	APPROVAL



KEYED NOTES
1 SHOWN FOR REFERENCE ONLY. REUSE EXISTING CLOCK CABLING.

IC - MAIN LEVEL PLAN - AREA A
SCALE: 1/8" = 1'-0"



PROJECT NAME / LOCATION:
LEE'S SUMMIT R-7 SCHOOL DISTRICT
SUMMIT LAKES MIDDLE SCHOOL

3500 SW WINDEMERE DR
LEE'S SUMMIT, MO 64082

INTERCOMMUNICATION SYSTEM
SYNCHRONIZED CLOCK SYSTEM

PROJECT MANAGER:
BEN MCVAY
314-705-0128

DESIGNER:
CHRIS WEHRMAN

DRAFTER:
CHRIS WEHRMAN

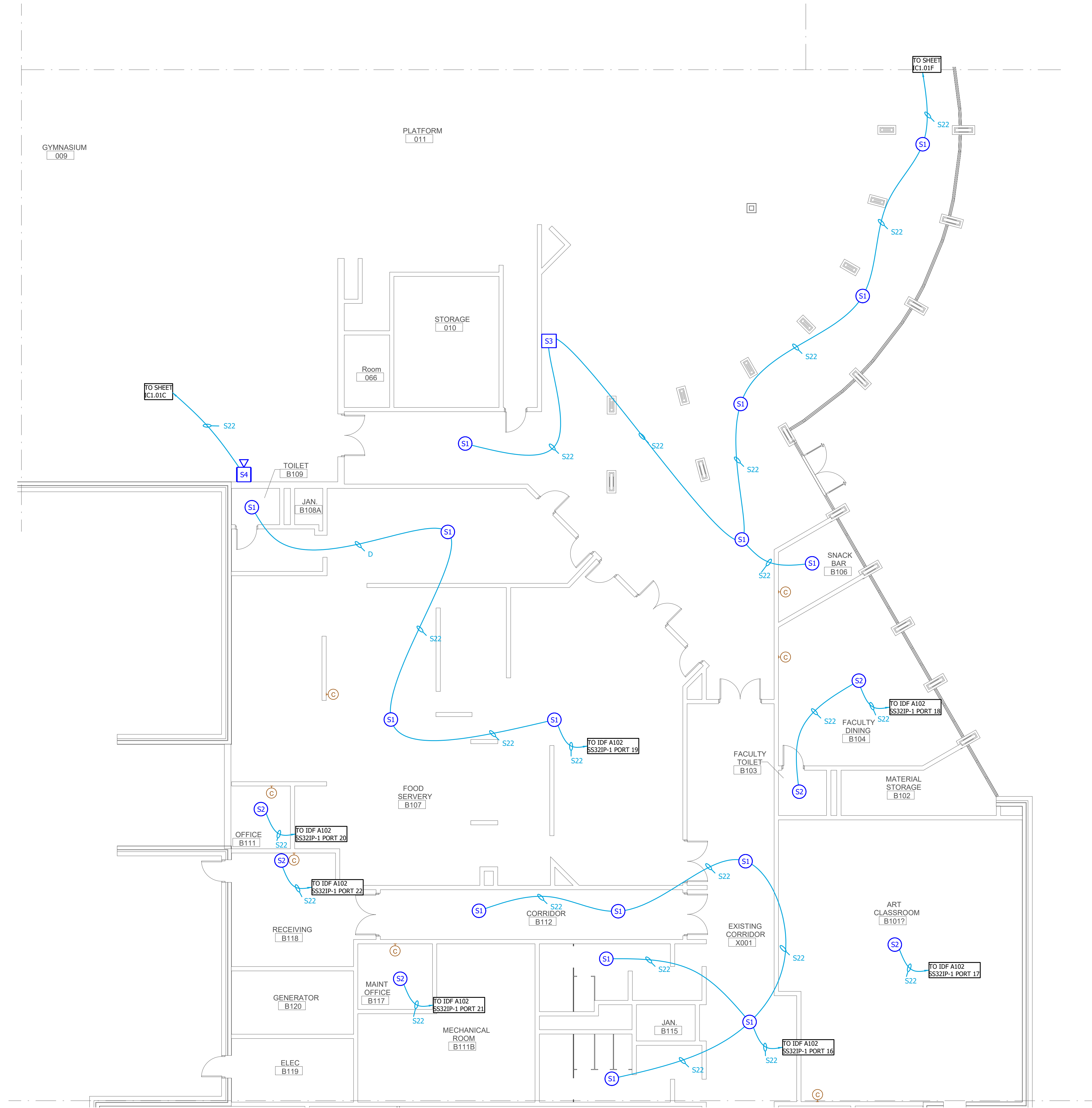
DRAWING #:

IC1.01A

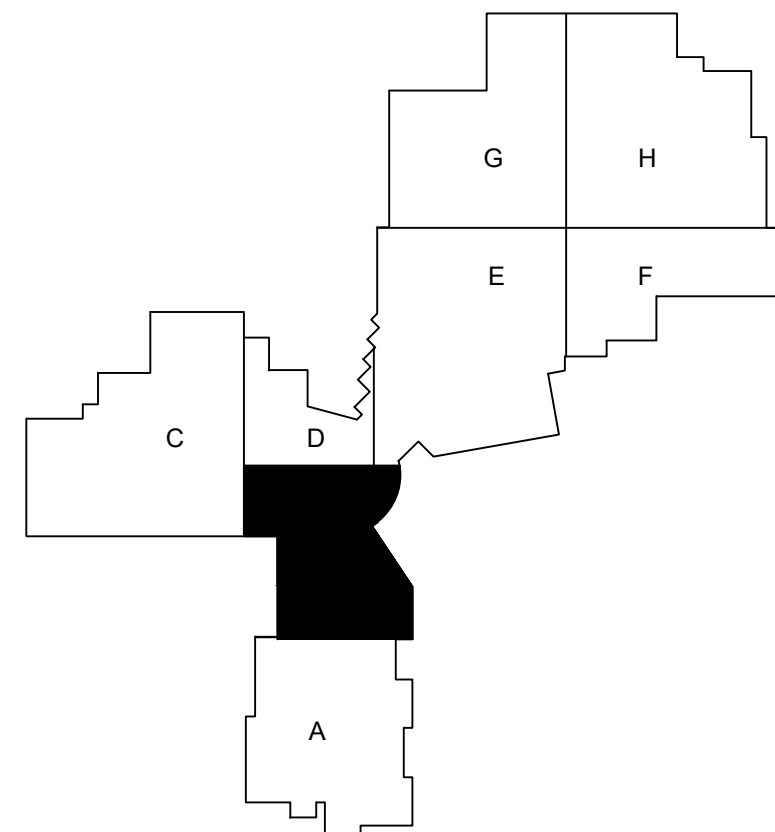
PROJECT
JOB#: PJ2503280014

DATE: 4/29/2025

ISSUED FOR: APPROVAL



IC - MAIN LEVEL PLAN - AREA B
SCALE: 1/8" = 1'-0"

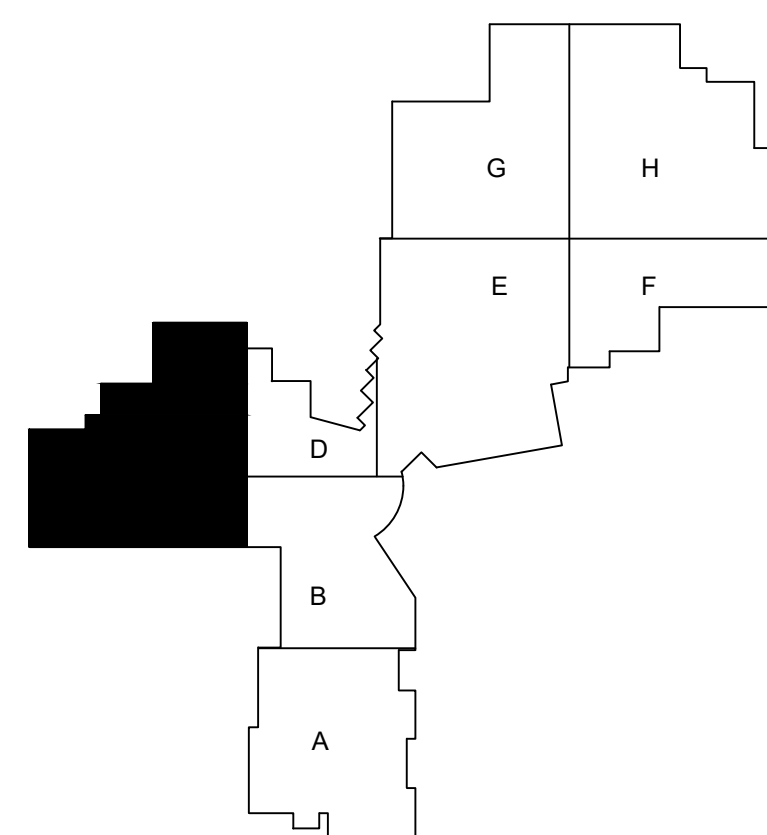


PROJECT NAME / CUSTOMER / LOCATION		SYSTEM DESCRIPTION	
LEE'S SUMMIT R-7 SCHOOL DISTRICT SUMMIT LAKES MIDDLE SCHOOL		INTERCOMMUNICATION SYSTEM SYNCHRONIZED CLOCK SYSTEM	
PROJECT MANAGER: BEN MCVAY 314-705-0128		DESIGNER: CHRIS WEHRMAN	
DRAWING #: IC1.01B		DRAFTER: CHRIS WEHRMAN	
PROJECT JOB#: P12503280014		DATE: 4/29/2025	
ISSUED FOR:		APPROVAL	



www.techelectronics.com
1.800.TECH.780

5720 Reeder Shawnee, Ks. 66203 (913)262-1772



1
IC1.01C

IC - MAIN LEVEL PLAN - AREA C

SCALE: 1/8" = 1'-0"

C	DATE:	RELIGION DEPARTMENT:
---	-------	----------------------

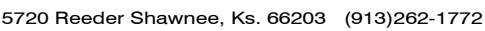
3500 SW WINDEMERE DR
LEE'S SUMMIT, MO 64082

PROJECT NAME / CUSTOMER / LOCATION:		SYSTEM DESCRIPTION:	
PROJECT NUMBER:		BEN MCVAY	
DESIGNER:		DRAWER:	
CURTIS WIERHMAN		CURTIS WIERHMAN	
DRAWING #:		IC1.01C	
PROJECT JOB#:		P12503280014	
DATE:		4/29/2025	
ISSUED FOR:		APPROVAL	



St. Louis, Missouri | Columbia, Missouri | Springfield, Missouri
Chicago, Illinois | Bloomington, Illinois | Indianapolis, Indiana
Denver, Colorado | Topeka, Kansas | Kansas City

www.techelectronics.com
1.800.TECH.789

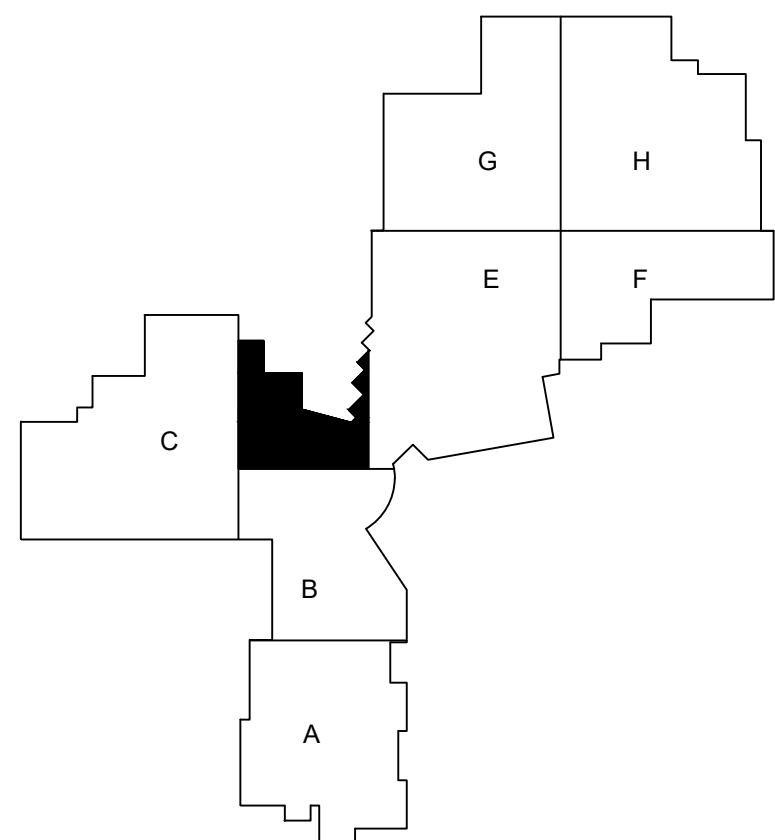
[illegible]

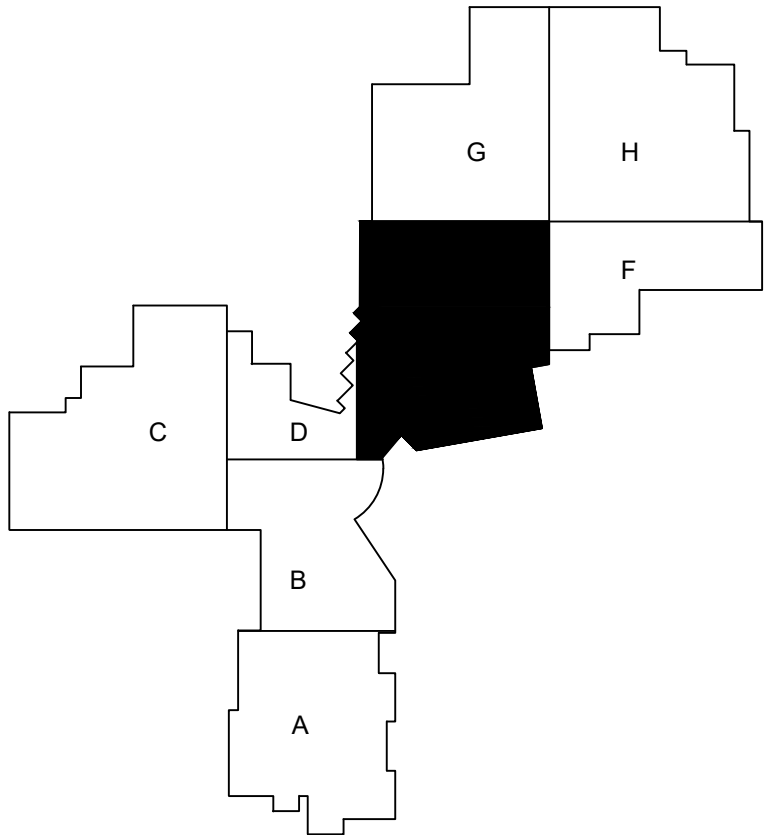
PROJECT NAME / CUSTOMER / LOCATION	SYSTEM DESCRIPTION
LEE'S SUMMIT R-7 SCHOOL DISTRICT SUMMIT LAKES MIDDLE SCHOOL	3500 SW WINDEMERE DR LEE'S SUMMIT, MO 64082
	INTERCOMMUNICATION SYSTEM SYNCHRONIZED CLOCK SYSTEM

PROJECT MANAGER:		BEN MCVAY 314-705-0128	
DESIGNER:		DRAFTER:	
CHRIS WEHRMAN		CHRIS WEHRMAN	
DRAWING #:			
IC1.01D			
PROJECT JOB#:		PJ2503280014	
DATE:		4/29/2025	
ISSUED FOR:		APPROVAL	



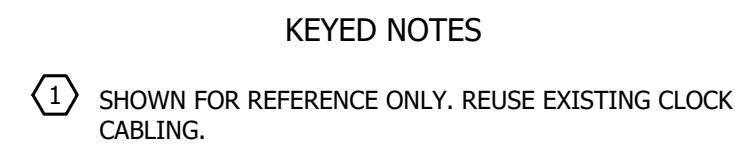
1 IC - MAIN LEVEL PLAN - AREA D
IC1.01D SCALE: 1/8" = 1'-0"



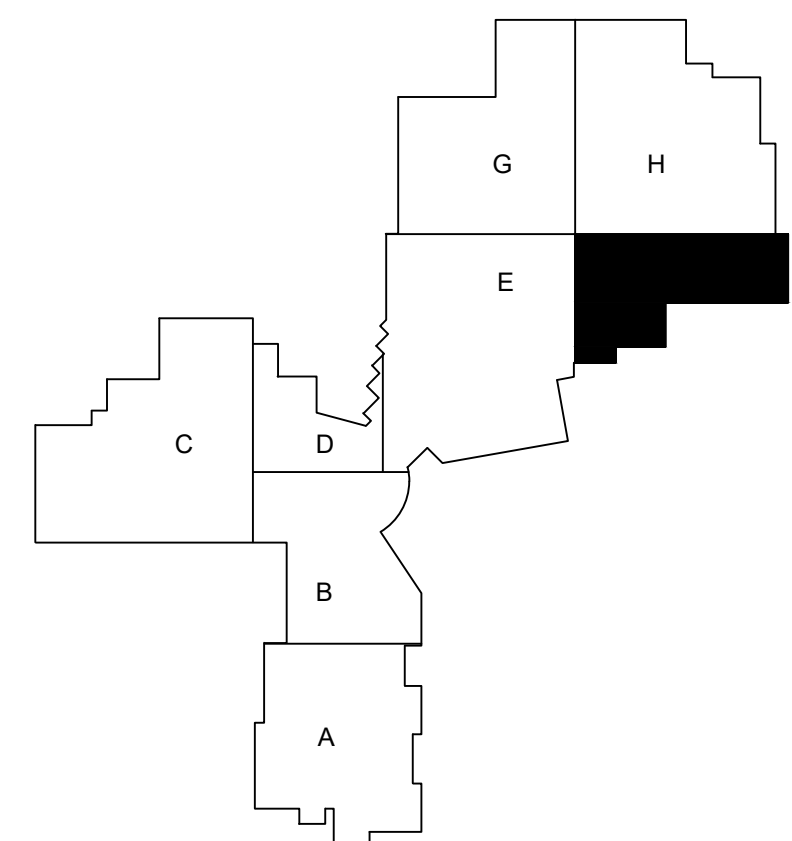


KEYED NOTES

- 1 SHOWN FOR REFERENCE ONLY. REUSE EXISTING CLOCK CABLING.
- 2 COORDINATE EXACT LOCATION WITH A TECH ELECTRONICS REPRESENTATIVE PRIOR TO INSTALLATION.



1 IC - MAIN LEVEL PLAN - AREA F
IC1.01F SCALE: 1/8" = 1'-0"

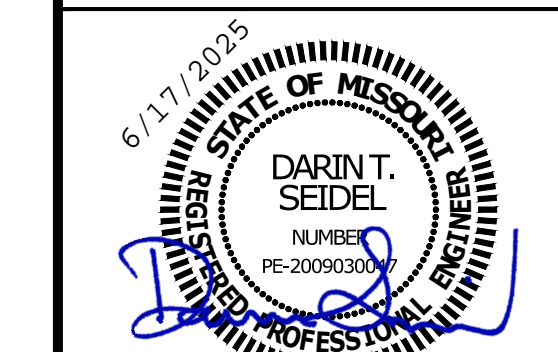
[illegible]

PROJECT NAME / CUSTOMER: LOCATION: LEE'S SUMMIT R-7 SCHOOL DISTRICT SUMMIT LAKES MIDDLE SCHOOL	
3500 SW WINDEMERE DR LEE'S SUMMIT, MO 64082	
SYSTEM DESCRIPTION: INTERCOMMUNICATION SYSTEM SYNCHRONIZED CLOCK SYSTEM	
PROJECT MANAGER: BEN MCVAY 314-705-0128	
DESIGNER: CHRIS WEHRMAN	DRAWER: CHRIS WEHRMAN
DRAWING: IC1.01F	
PROJECT NUMBER:	PJ2503280014
DATE:	4/29/2025
ISSUED FOR:	APPROVAL



St. Louis, Missouri | Columbia, Missouri | Springfield, Missouri
Chicago, Illinois | Bloomington, Illinois | Indianapolis, Indiana
Denver, Colorado | Topeka, Kansas | Kansas City

www.techelectronics.com
1.800.TECH.789

[illegible]

LOCATION:
LEE'S SUMMIT R-7 SCHOOL DISTRICT
SUMMIT LAKES MIDDLE SCHOOL
3500 SW WINDEMERE DR
LEE'S SUMMIT, MO 64082
INTERCOMMUNICATION SYSTEM
SYNCHRONIZED CLOCK SYSTEM

PROJECT NAME / CUSTOMER	SYSTEM DESCRIPTION:

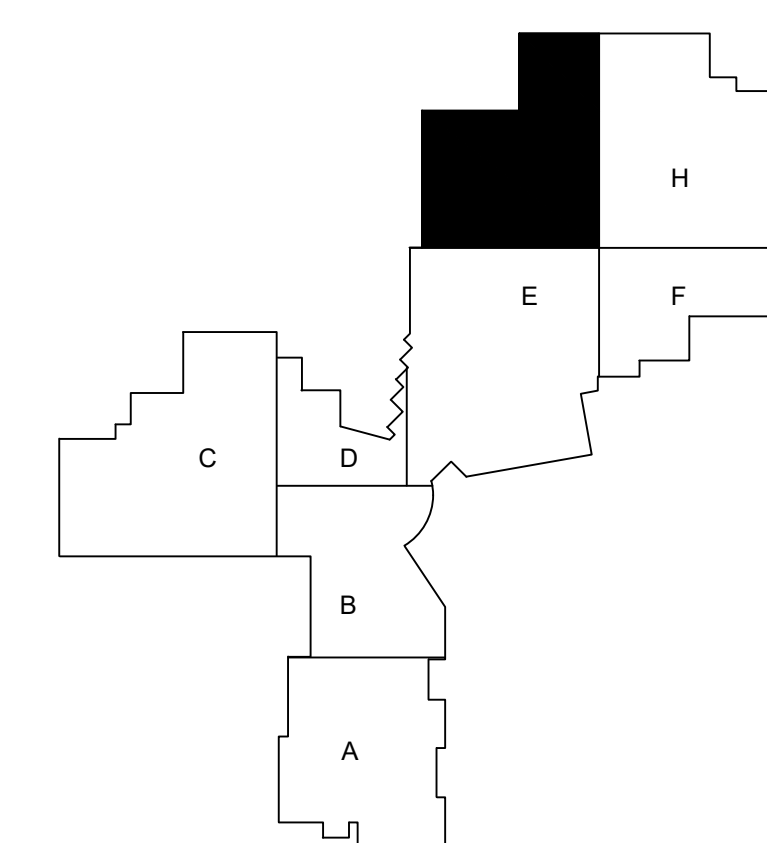
314-705-0128	
DESIGNER: CHRIS WEHRMAN	DRAFTER: CHRIS WEHRMAN

DRAWING #:
IC1 01G

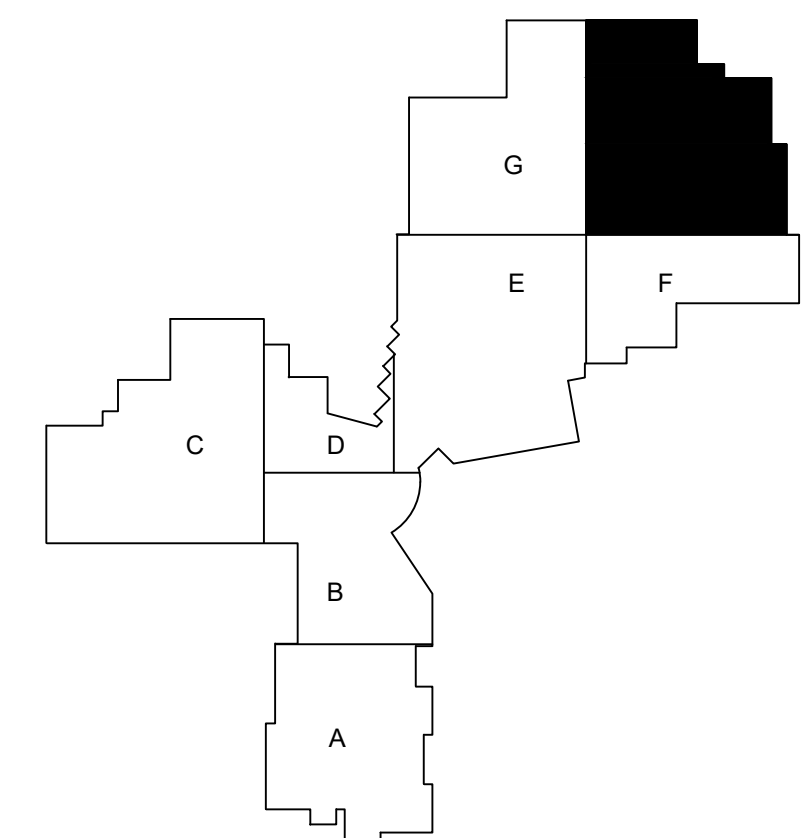
PROJECT
JOB#: PJ2503280014

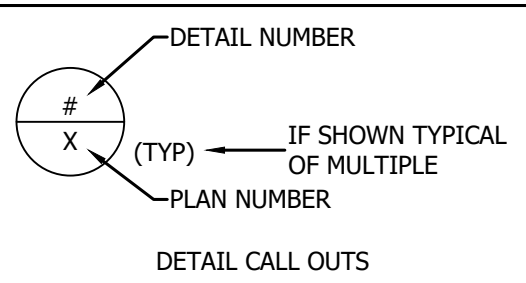
DATE:	4/29/2025
ISSUED	APPROVAL

ISSUED FOR: APPROVAL



IC - MAIN LEVEL PLAN - AREA G
SCALE: 1/8" = 1'-0"





SS32IP-1	WATTS	1/4 WATT	1/2 WATT	1 WATT	2 WATT	Location
1	1.26		2			A077, A076
2	0.63		1			A078
3	1.89		3			A101, A086
4	0.63		1			A103
5	0.63		1			A104
6	0.63		1			A106
7	0.63		1			A109
8	3.15		5			A111, A110, A115, A116
9	0.63		1			A112
10	0.63		1			A120
11	0.63		1			A122
12	1.89		3			A122, A098
13	1.89		3			A127, A125
14	1.26		2			A132, A130
15	0.63		1			A133
16	12.5			10		A Corridors
17	0.63		1			B101
18	1.26		2			B104
19	4.38		1	3		B107
20	0.63		1			B110
21	0.63		1			B117
22	0.63		1			B118
23	1.26		2			A005, A002
24	2.5			6		B Corridors
25	0					
26	0					
27	0					
28	0					
29	0					
30	0					
31	0					
32	0					
Total	46.43					

1
IC2.01
SS32IP-1 PORT LIST (IDF ROOM A102)
SCALE: NONE

SS32IP-2	WATTS	1/4 WATT	1/2 WATT	1 WATT	2 WATT	Location
1	2.5			2		D02
2	1.26		2			D03
3	0.63		1			D04
4	2.5			2		D09
5	0.63		1			D18
6	0.63		1			D19
7	1.26		2			D05, D06
8	1.26		2			D5, D3
9	12.5			10		C Corridors
10	1.26		2			C100
11	0.63		1			C101
12	1.26		2			C104, C102
13	0.63		1			C105
14	1.14		3	1		C106, C106A, C106B, C106D
15	0					
16	0					
17	1.26		2			
18	0					
19	0					
20	0					
21	0					
22	0					
23	0					
24	0					
25	0					
26	0					
27	0					
28	0					
29	0					
30	0					
31	0					
32	0					
Total	30.09					

2
IC2.01
SS32IP-2 PORT LIST (IDF ROOM C103A)
SCALE: NONE

SS32IP-3	WATTS	1/4 WATT	1/2 WATT	1 WATT	2 WATT	Location
1	0.63		1			D1
2	0.63		1			D101
3	0.63		1			By room D113
4	0.63		1			D103
5	0.63		1			D106
6	0.63		1			D11
7	0.63		1			D112
8	3.15		5			D120, D118, D119, D121, D122
9	0.63		1			D124
10	0.63		1			D125
11	0.63		1			D126
12	0.63		1			D127
13	0.63		1			D128
14	0.63		1			D129
15	0.63		1			D138
16	0.63		1			D141
17	1.26		2			D143, D144
18	0.63		1			D146
19	0.63		1			D147
20	20			15		B-D Common Area
21	11.89		3	8		E Common Area
22	18.75			15		E Corridors
23	12.5			10		E Office Corridors
24	0					D5
25	0					
26	0					
27	0					
28	0					
29	0					
30	0					
31	0					
32	0					
Total	76.29					Corr./Comms (A72)/AMP1-2)

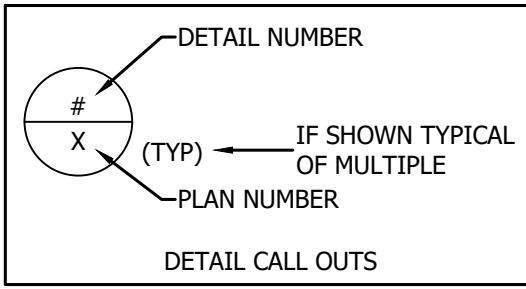
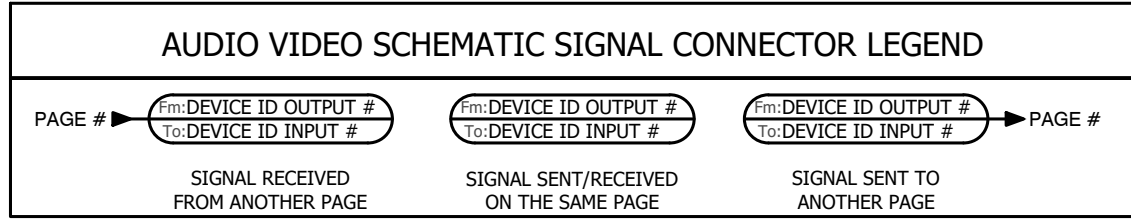
1
IC2.01
SS32IP-3 PORT LIST (MDF ROOM D142A)
SCALE: NONE

SS32IP-4	WATTS	1/4 WATT	1/2 WATT	1 WATT	2 WATT	Location
1	0.63		1			D2
2	0.63		1			D3
3	0.63		1			D22
4	0.63		1			D23
5	0.63		1			D25
6	0.63		1			D26
7	0.63		1			D31
8	0.63		1			D39
9	0.63		1			D40
10	0.63		1			D42
11	0.63		1			D49
12	0.63		1			D50
13	0.63		1			D52
14	0.63		1			D53
15	0.63		1			D54
16	0.63		1			D55
17	1.26		2			D56
18	0.63		1			D57
19	0.63		1			D58
20	0.63		1			D59
21	0.63		1			D60
22	0.63		1			D61
23	0.63		1			D64
24	0.63		1			D65
25	0.63		1			D78
26	0.63		1			D79
27	0.63		1			A104
28	0.63		1			A105
29	0.63		1			A114
30	0.63		1			A115
31	1.26		2			D153, D152
32	0					Corr./Comms (A72)/AMP
Total	20.79					

1
IC2.01
SS32IP-4 PORT LIST (IDF ROOM E-F)
SCALE: NONE

SS32IP-5	WATTS	1/4 WATT	1/2 WATT	1 WATT	2 WATT	Location
1	0.63		1			D5
2	0.63		1			D11
3	0.63		1			D14
4	0.63		1			D15
5	0.63		1			D16
6	0.63		1			D24
7	0.63		1			D27
8	0.63		1			D28
9	0.63		1			D29
10	0.63		1			D31
11	0.63		1			D33
12	0.63		1			D44
13	0.63		1			D35
14	0.63		1			D36
15	0.63		1			D37
16	0.63		1			D38
17	1.26		2			D42
18	0.63		1			D48
19	0.63		1			D50
20	0.63		1			D51
21	0.63		1			D62
22	0.63		1			D63
23	0.63		1			D74
24	0.63		1			D76
6	1.26		2			A102
7	0.63		1			A106
27	0.63		1			A107
28	0.63		1			A112
29	0.63		1			A118
30	1.26		2			A120
31	1.26		2			By room 62
32	0					D41
Total	22.05					

1
IC2.01
SS32IP-5 PORT LIST (IDF ROOM E-F)
SCALE: NONE



CST			
TYPICAL CONNECTOR DETAIL - CAPTIVE SCREW TYPE	TYPICAL CONNECTOR DETAIL - PHOENIX FOR MIC OR LINE LEVEL BALANCED AUDIO INPUT/OUTPUT WIRING	TYPICAL CONNECTOR DETAIL - 12/24VDC LOW VOLTAGE POWER	TYPICAL CONNECTOR DETAIL - CATEGORY CABLE CONNECTOR OR JACK

- GENERAL CONNECTION NOTES:
- VERIFY PIN OUT ON ALL EQUIPMENT.
 - CONNECTION DETAILS PROVIDED BELOW ARE TYPICAL AND MUST BE VERIFIED.
 - DO NOT ALTER MANUFACTURER RECOMMENDATION.
 - UTILIZE MANUFACTURER MANUALS FOR SPECIFIC CONNECTION DETAILS.

CONNECTOR ABBREVIATION LEGEND	
>XXXX	- NOT ALL USED -
NOTE	DESIGNATION
BNC	BNC TYPE, TYPICAL ONE CONNECTOR UNO, ADD SUFFIX WITH # OF CONNECTORS
CST	CAPTIVE SCREW TYPE
DIN#	DIN TYPE, #=QTY OF PINS, TYPICAL 4,6,8
D#*	D-SUB TYPE, #=QTY OF PINS, TYPICAL 9,15,25, *=TYPE: M-MALE, F-FEMALE
DMC	CRESTRON DM-CAT [D/M/NET]
DP	DISPLAY PORT, TYPICAL STANDARD UNO, ADD SUFFIX *=TYPE: I-MINI
DVI*#	DVI TYPE, *=TYPE: A-ANALOG, D-DIGITAL, I-INTEGRATED, #=LINK TYPE: S-SINGLE, D-DUAL
E3	ELCO 3-PIN TYPE [AUDIO PATCH PANEL]
EC45	NEUTRIK RUGGED RJ45 DATA ETHERCON TYPE, 8-PIN, SHIELDED, TYPICAL TIA-568B UNO
F	"F" TYPE COAXIAL CONNECTOR
-FBO-	UNKNOWN CONNECTOR TYPE, FURNISHED BY OTHERS
HDMI	HIGH DEFINITION MULTIMEDIA INTERFACE TYPE, TYPICAL STANDARD MALE UNO, ADD SUFFIX F-FEMALE, *=TYPE: M-MICRO, I-MINI
IR	INFRARED EMITTER "BUG"
IDC	INSULATION DISPLACEMENT (PUNCHDOWN)
MINI	1/8" (3.5MM) MINI TIP, RING SLEEVE PHONO TYPE, TYPICAL MALE UNO, ADD SUFFIX F-FEMALE
NL#	NEUTRIK SPEAKON TYPE CONNECTOR, #=QTY OF POLES, *=TYPE: M-MALE, F-FEMALE
OC*#	NEUTRIK OPTICON RUGGED FIBER, *=TYPE: M-MALE, F-FEMALE, #=QTY OF FIBER
PASS	PASS-THRU (NO CONNECTOR)
PHX	PHOENIX TYPE, TYPICAL 3-PIN, ADD SUFFIX WITH QTY OF PINS AS REQUIRED
PB	PUNCH BLOCK TYPE, TYPICAL 66BLOCK, ADD SUFFIX K-KRONE
PWR	LOW VOLTAGE POWER CONNECTION (TYPICALLY 12/24VDC), REFERENCE DETAILS FOR MORE INFORMATION
RCA	RADIO CORP. OF AMERICA PHONO PLUG, ADD SUFFIX #=QTY OF CONNECTORS TYPE: M-MALE, F-FEMALE
RJ45	RJ45 DATA TYPE, 8-PIN, TYPICAL TIA-568B UNO, ADD SUFFIX (S) FOR SHIELDED VERSION
SDI	SERIAL DIGITAL INTERFACE (BNC TYPE)
SLDR	SOLDERED CONNECTION
TERM	TERMINAL BLOCK SCREW TYPE OR LARGE PHX TYPE CONNECTION
TRS	1/4" TIP, RING, SLEEVE PHONO TYPE, *=TYPE: M-MALE, F-FEMALE
TS	1/4" TIP, SLEEVE PHONO TYPE, *=TYPE: M-MALE, F-FEMALE
XLR	EXTERNAL LINE RETURN [XLR] TYPE, TYPICAL 3-PIN UNO, *=TYPE: M-MALE, F-FEMALE, ADD SUFFIX #=QTY OF PINS
USB	UNIVERSAL SERIAL BUS TYPE CONNECTOR, TYPICAL MALE UNO, ADD SUFFIX F-FEMALE, *=TYPE: A, B, C, M-MICRO, I-MINI, L-LIGHTNING, P-PIGTAIL
120V	TYPICAL 120VAC POWER CONNECTION, NOTED FOR REFERENCE ONLY, ALL TERMINATION TO 120VAC P.B.O. (ELECTRICAL CONTRACTOR)

The Power of Connection and Protection™

St. Louis, Missouri | Columbia, Missouri | Springfield, Missouri | Chicago, Illinois | Bloomington, Illinois | Indianapolis, Indiana | Denver, Colorado | Topeka, Kansas | Kansas City

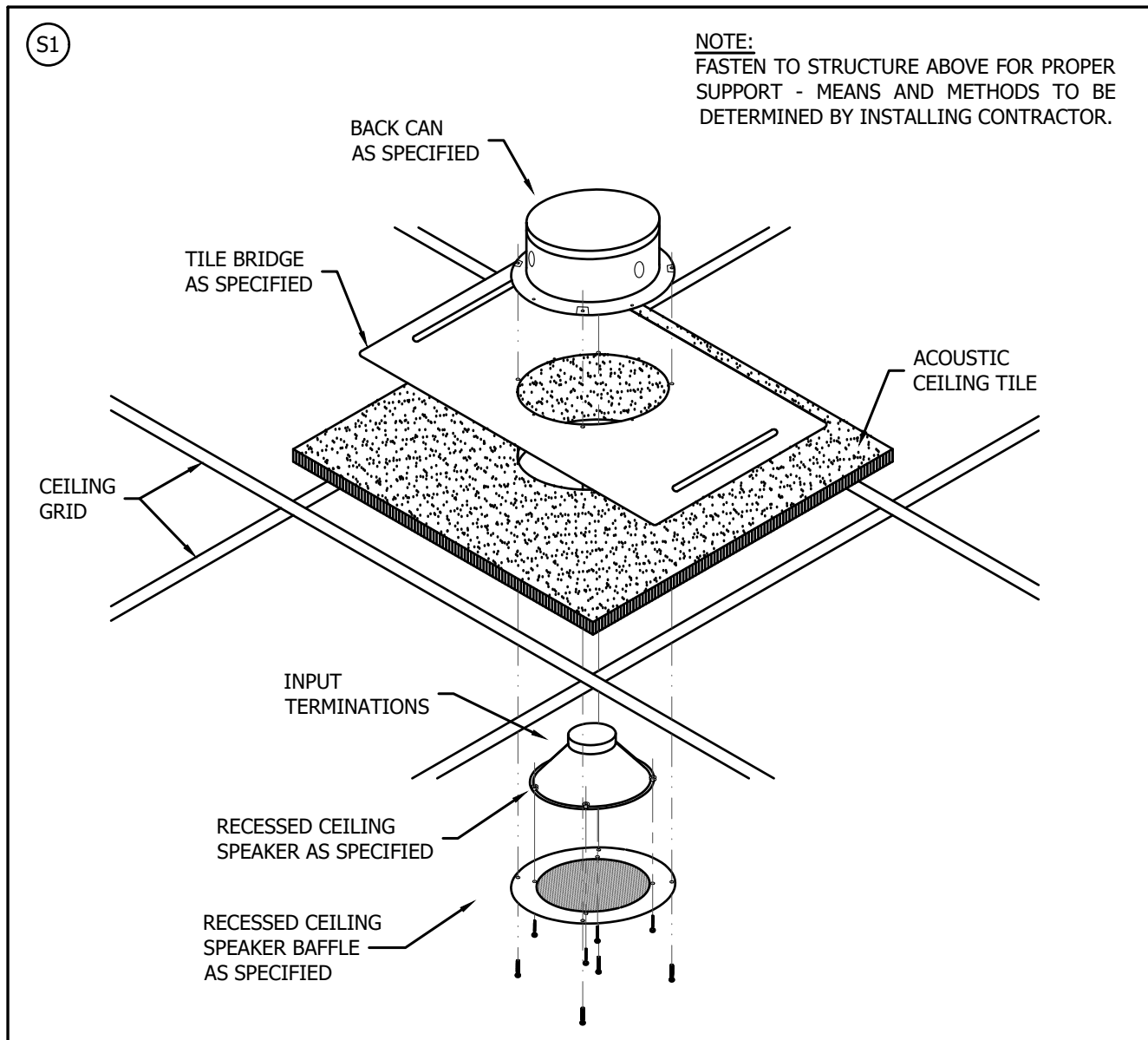
www.techelectronics.com
1.800.TECH.789

5720 Reeder Shawnee, Ks. 66203 (913)262-1772

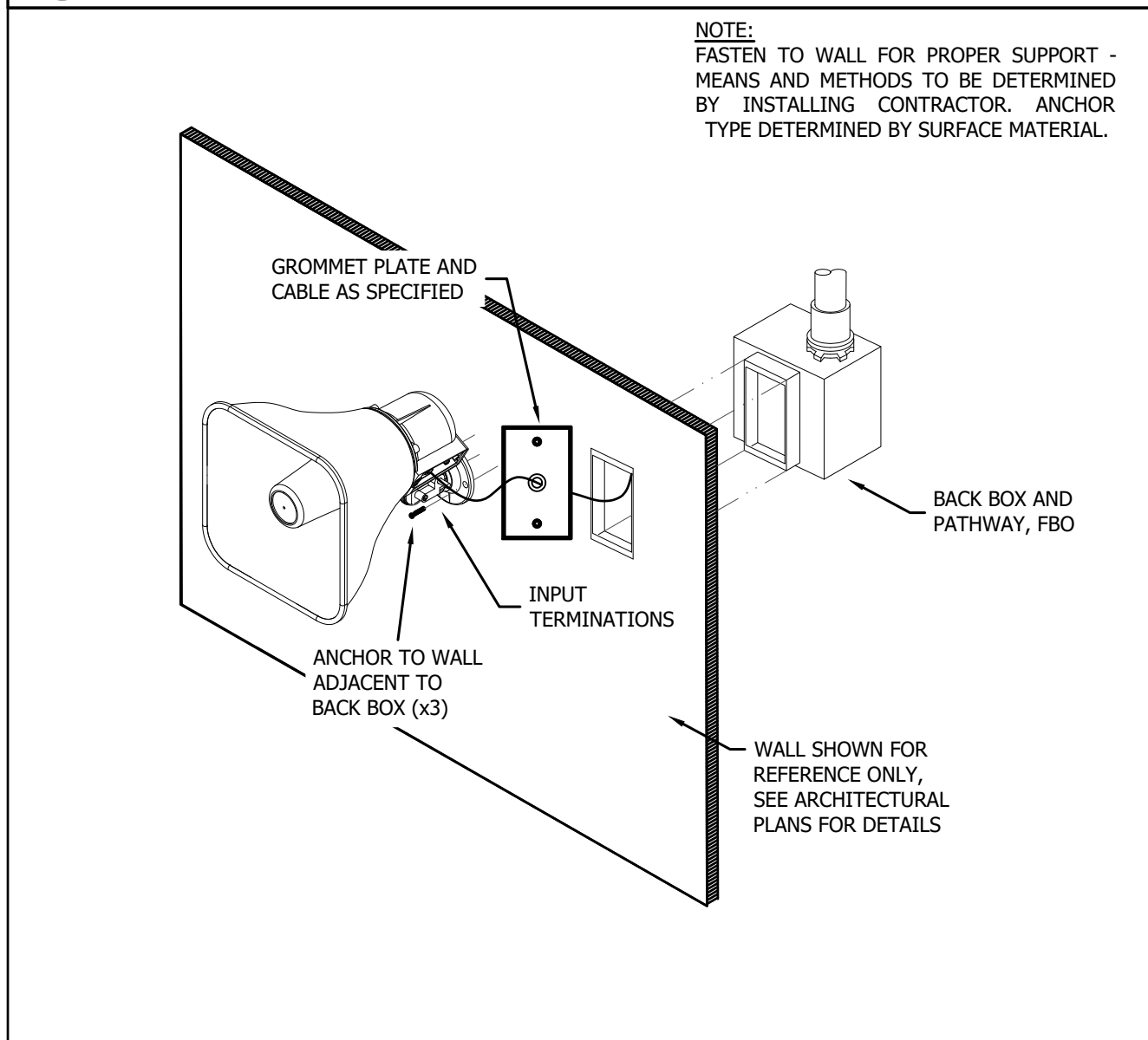
PROJECT NAME / CUSTOMER / LOCATION:	LEE'S SUMMIT R-7 SCHOOL DISTRICT SUMMIT LAKES MIDDLE SCHOOL
PROJECT MANAGER:	BEN MCVAY 314-705-0128
DESIGNER:	CHRIS WEHRMAN
DRAWING #:	IC3.10
PROJECT JOB#:	PJ2503280014
DATE:	4/29/2025
ISSUED FOR:	APPROVAL

3500 SW WINDEMERE DR
LEE'S SUMMIT, MO 64082

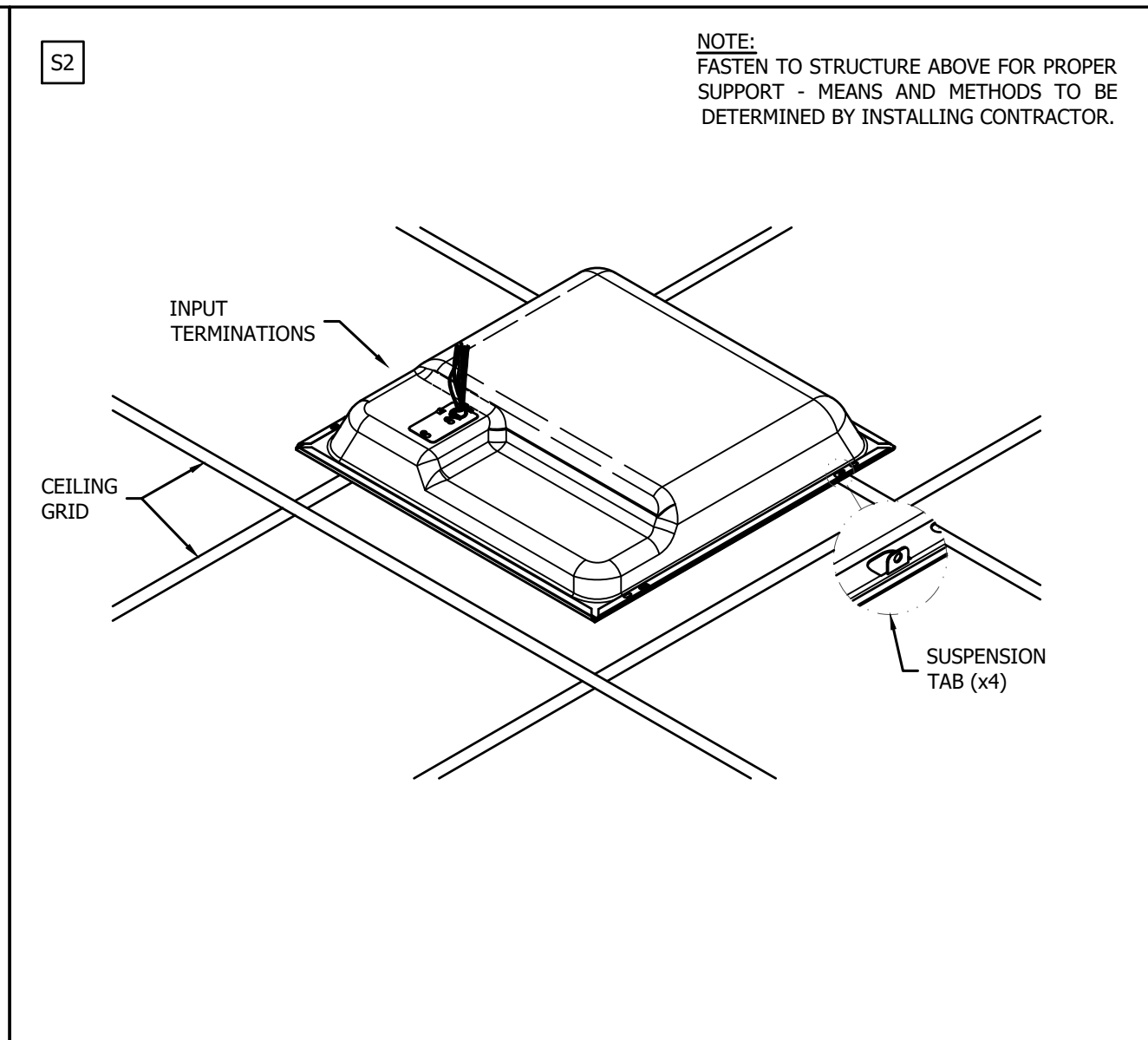
INTERCOMMUNICATION SYSTEM
SYNCHRONIZED CLOCK SYSTEM



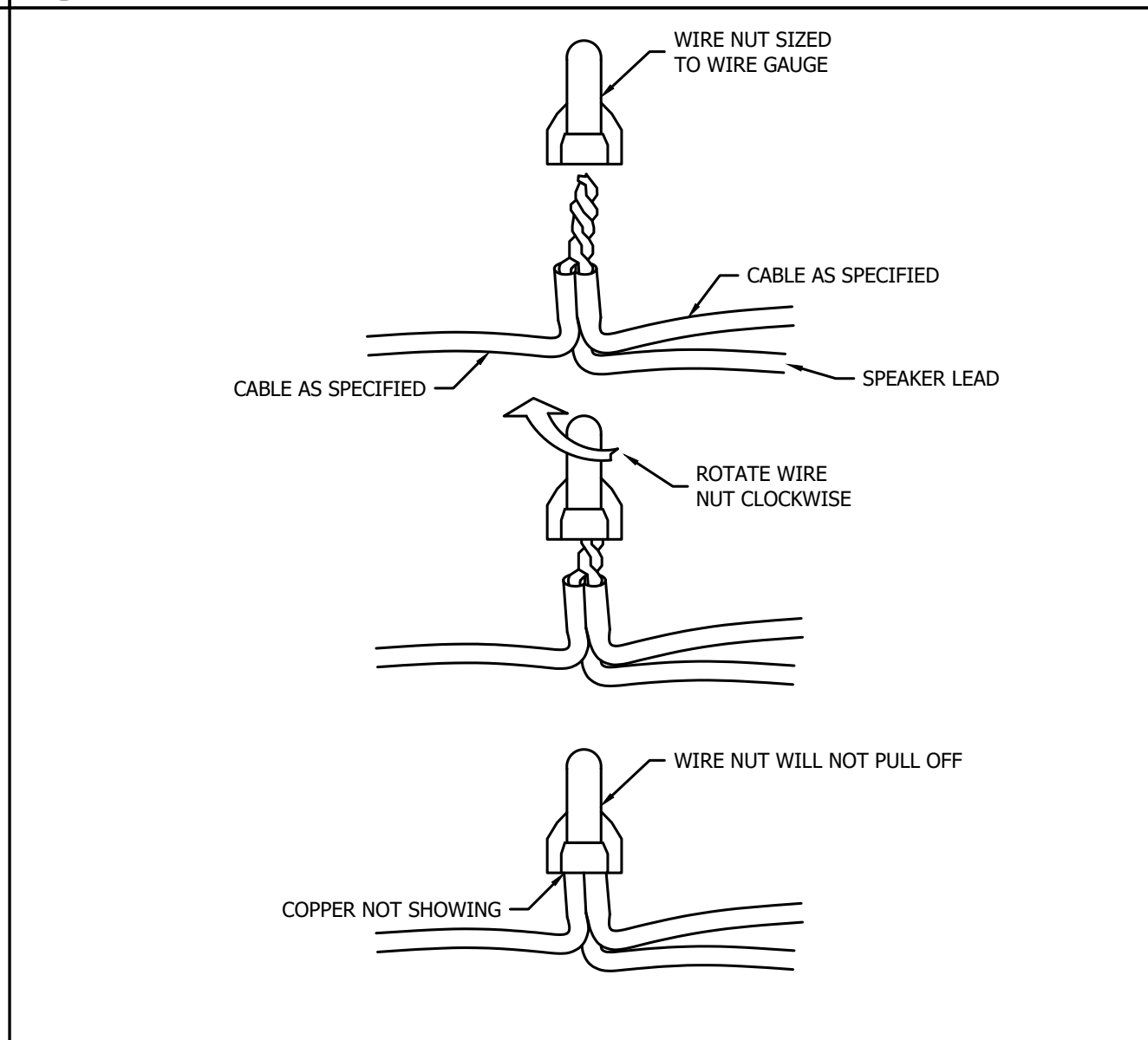
1
IC4.00
S1 SPEAKER MOUNTING DETAIL
SCALE: NONE



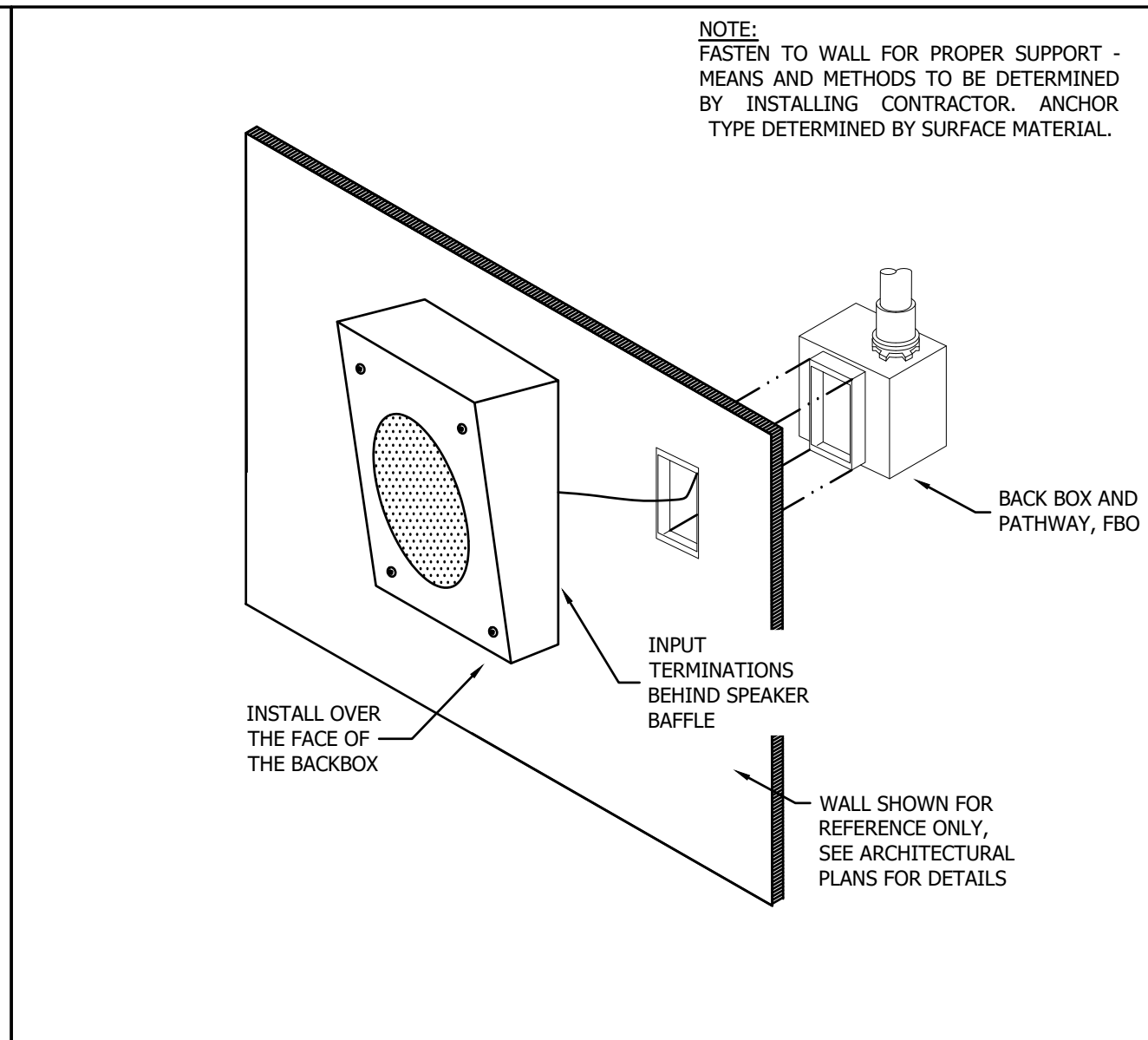
4
IC4.00
S4 SPEAKER MOUNTING DETAIL
SCALE: NONE



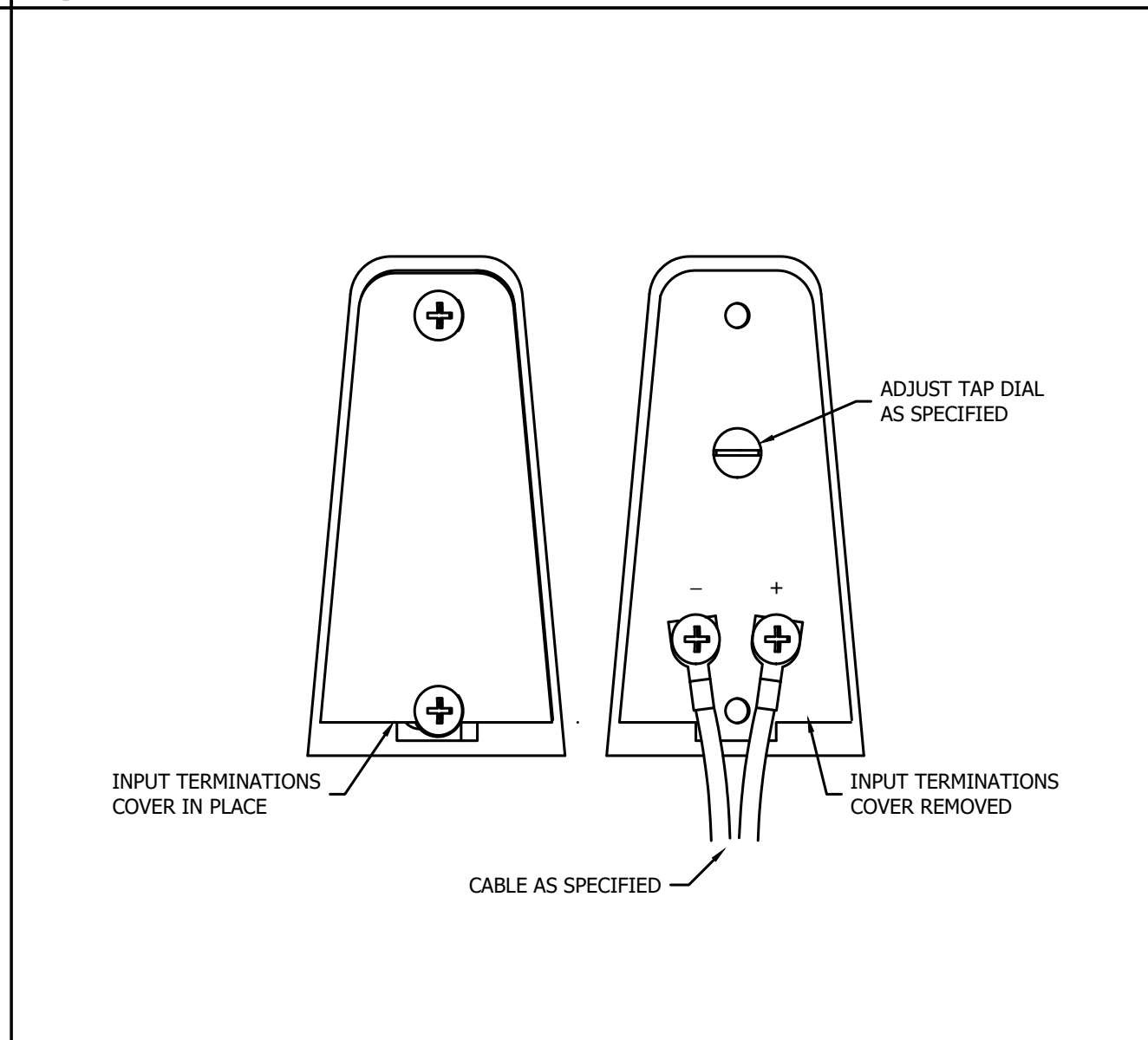
2
IC4.00
S2 SPEAKER MOUNTING DETAIL
SCALE: NONE



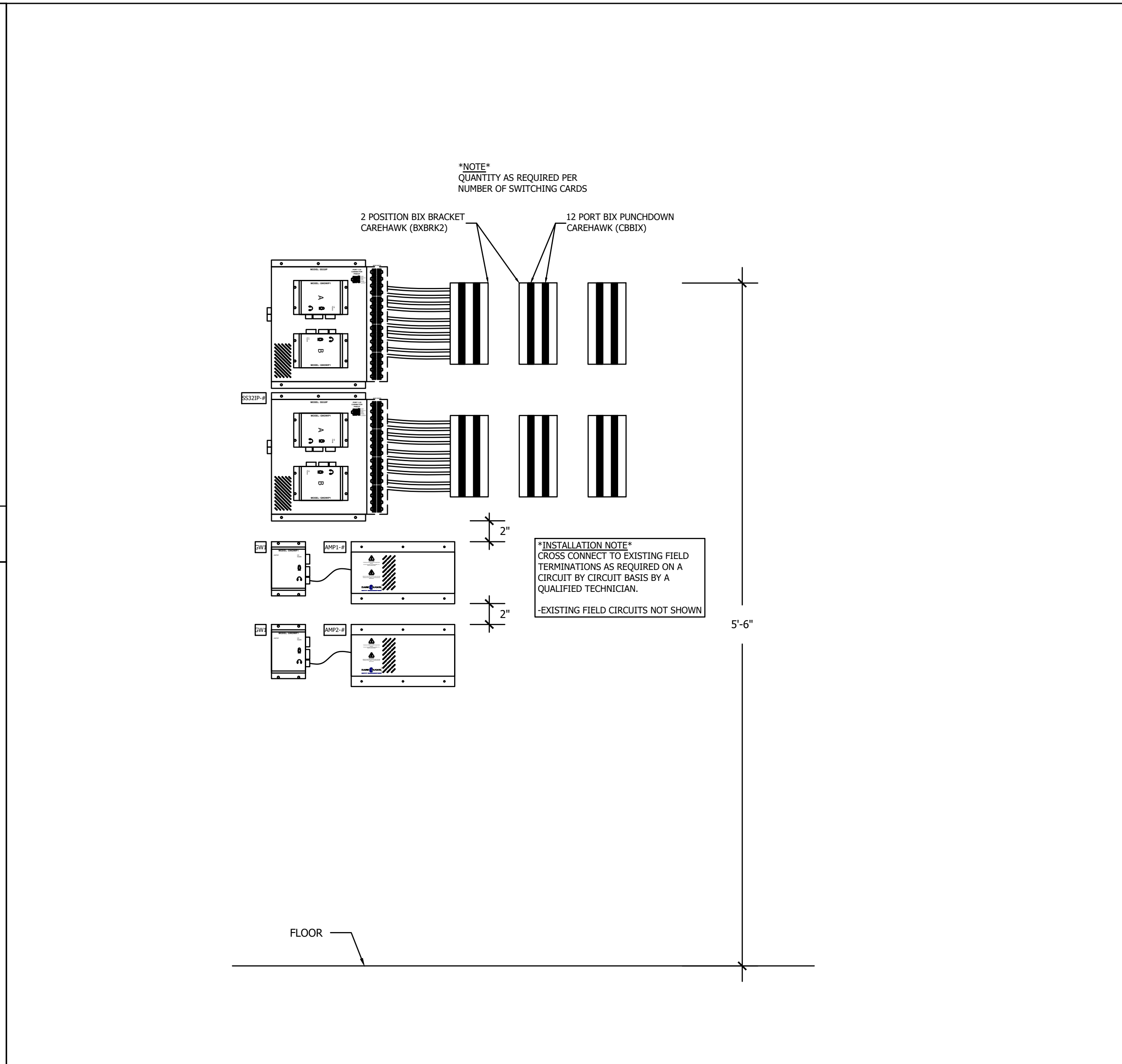
5
IC4.00
S1, 2 & 3 SPEAKER CONNECTION DETAIL
SCALE: NONE



3
IC4.00
S3 SPEAKER MOUNTING DETAIL
SCALE: NONE



6
IC4.00
S4 SPEAKER CONNECTION DETAIL
SCALE: NONE

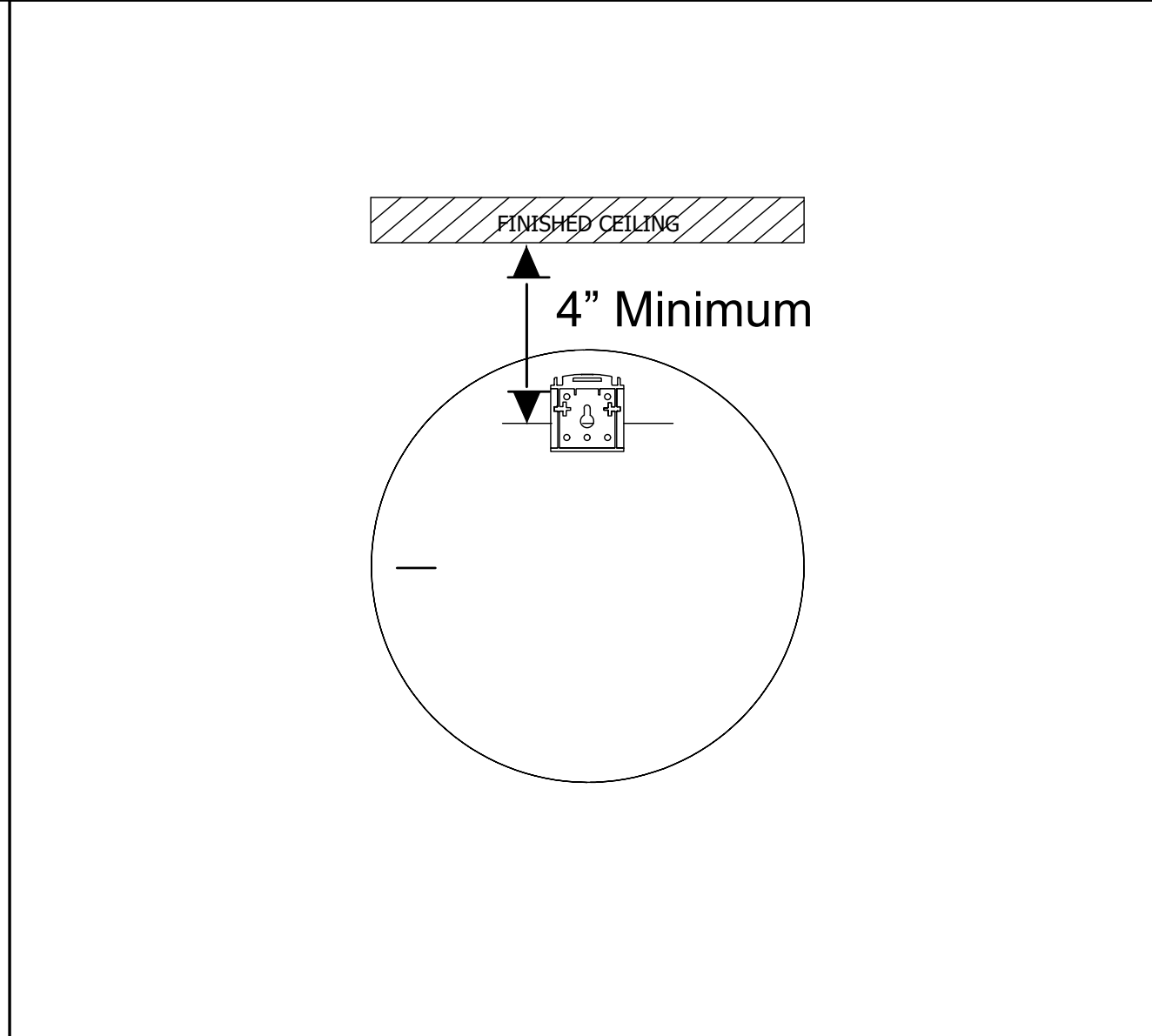


7
IC4.00
SS32 MOUNTING DETAIL
SCALE: NONE

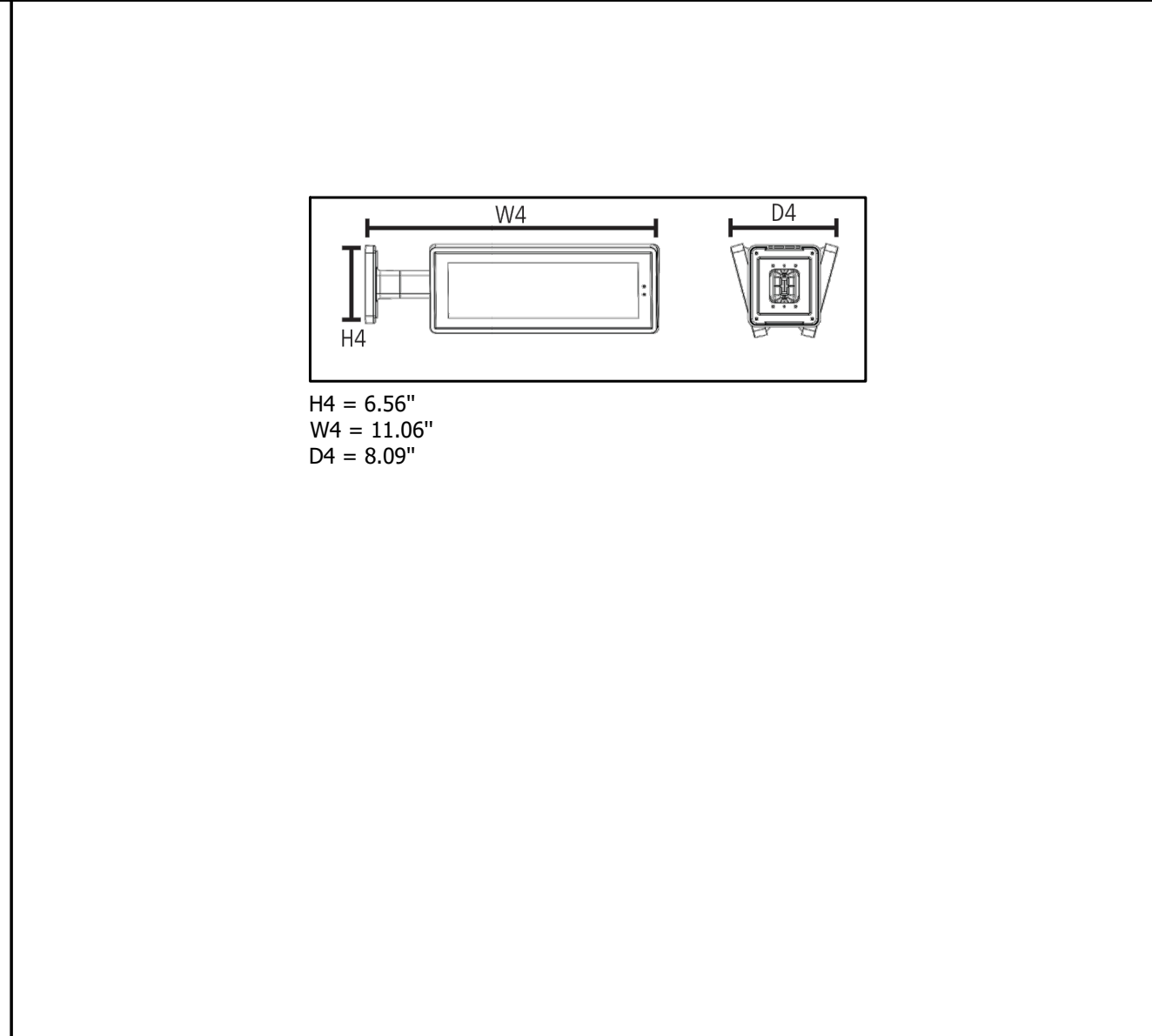
8
IC4.00

SPEAKER TAP CHART
SCALE: NONE

QUAM		
TRANSFORMER SETTINGS:		
WIRE LEAD COLOR:	WATTS AT 25V	WATTS AT 70V
BROWN	5	
RED	2.5	
ORANGE	1.25	
GREEN	.63	5
WHITE	.32	2.5
BLUE		1.25
GRAY	.63	
VIOLET	.32	
BLACK	COMMON	COMMON



9
IC4.00
ANALOG CLCOK MOUNTING DETAIL
SCALE: NONE



10
IC4.00
DIGITAL CLOCK DIMENSIONS
SCALE: NONE

TECH

ELECTRONICS

The Power of Connection and Protection™

St. Louis, Missouri | Columbia, Missouri | Springfield, Missouri |
Chicago, Illinois | Bloomington, Illinois | Indianapolis, Indiana |
Denver, Colorado | Topeka, Kansas | Kansas City

www.techelectronics.com
1.800.TECH.789

BC ENGINEERS
INCORPORATED

5720 Reeder Shawnee, Ks. 66203 (913)262-1772

6/17/2025

STATE OF MISSOURI

DARIN T. SEIDEL

NUMBER 062000000

Professional Engineer

PROJECT NAME / CUSTOMER / LOCATION:
LEE'S SUMMIT R-7 SCHOOL DISTRICT
SUMMIT LAKES MIDDLE SCHOOL
3500 SW WINDEMERE DR
LEE'S SUMMIT, MO 64082

PROJECT MANAGER:
BEN MCVAY
314-705-0128

DESIGNER:
CHRIS WEHRMAN

DRAWER:
CHRIS WEHRMAN

DRAWING #:
IC4.00

PROJECT JOB#: P12503280014

DATE: 4/29/2025

ISSUED FOR: APPROVAL

SYSTEM DESCRIPTION:
INTERCOMMUNICATION SYSTEM
SYNCRONIZED CLOCK SYSTEM