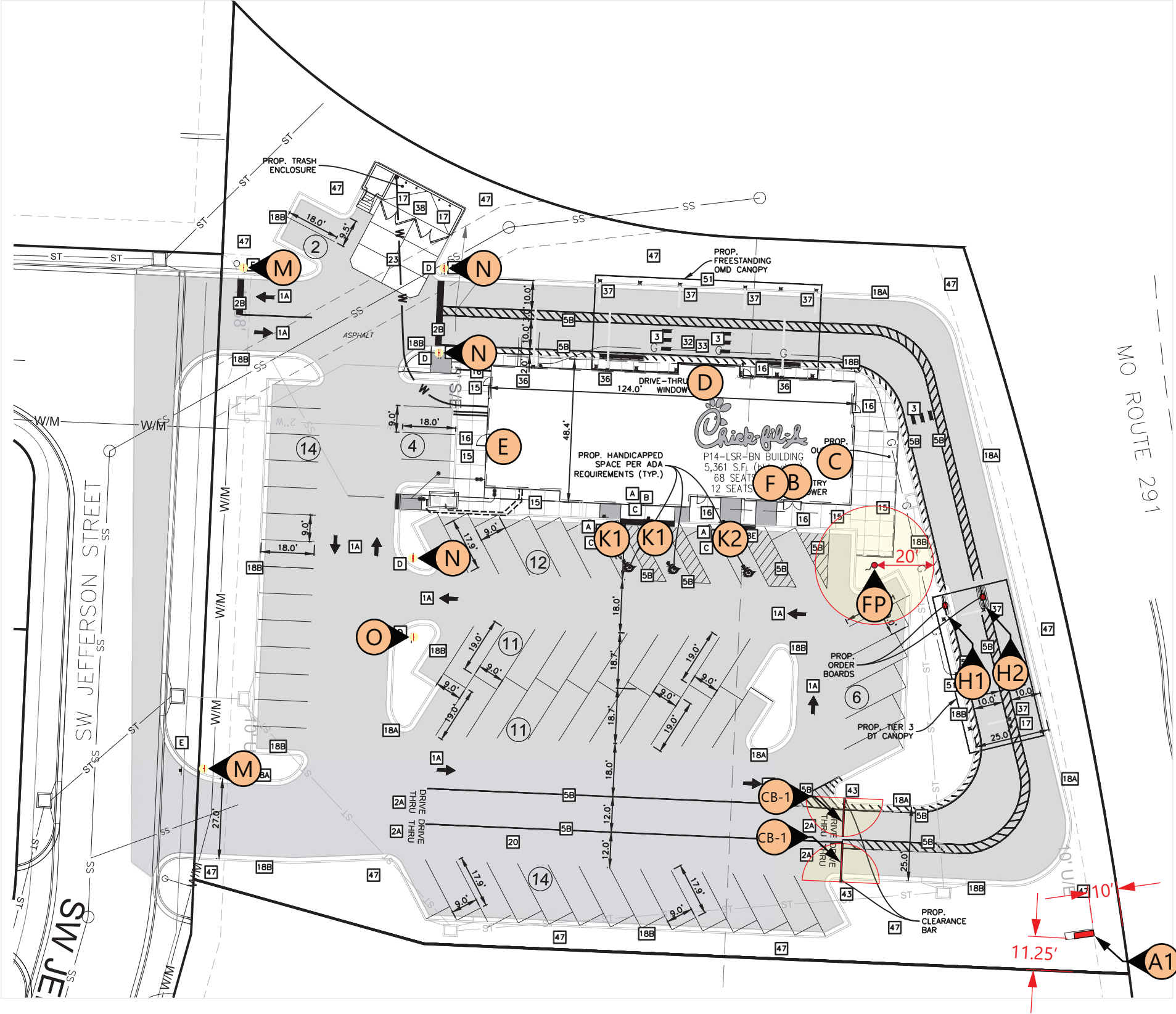


Item	Description	Qty	Sign Area	Allowed
A1	Main ID Sign	1	70.00	72.00
A2	Tenant Panels	2	12.00	12.00
A3	Tenant Panels	2	12.00	12.00
B	Wall Sign - Script 5.0' (red)	1	37.71	262.49
C	Wall Sign - Script 5.0' (red)	1	37.71	102.49
D	Wall Sign - Icon 6.0'	1	36.00	102.49
E	Wall Sign - Script 5.0' (red)	1	37.71	262.49
F	Welcome Stamp	1	6.25	262.49

Item	Description	Qty
K1	DOT - Handicapped Parking	2
K2	DOT - Handicapped Parking (Van)	1
M	DOT - Stop (30")	2
N	DOT - Stop / Do Not Enter	3
O	DOT - Do Not Enter	1
H1-H2	Menu Board (Lane 1 and 2)	2
CB-1	Clearance Bar (single) 13.00'	2
FP	Flag pole (25') High Wind	1
	Push Pull Graphics	1
	Vestibule Graphics	2
	Vinyl Door Graphics	1



5198 North Lake Drive  
Lake City, GA 30260  
404.361.3800  
www.claytonsigns.com

SITE PLAN

DRAWING FILE - CFA - LEE'S SUMMIT, MO (US 50 & SR 291) SIGNAGE.CDR

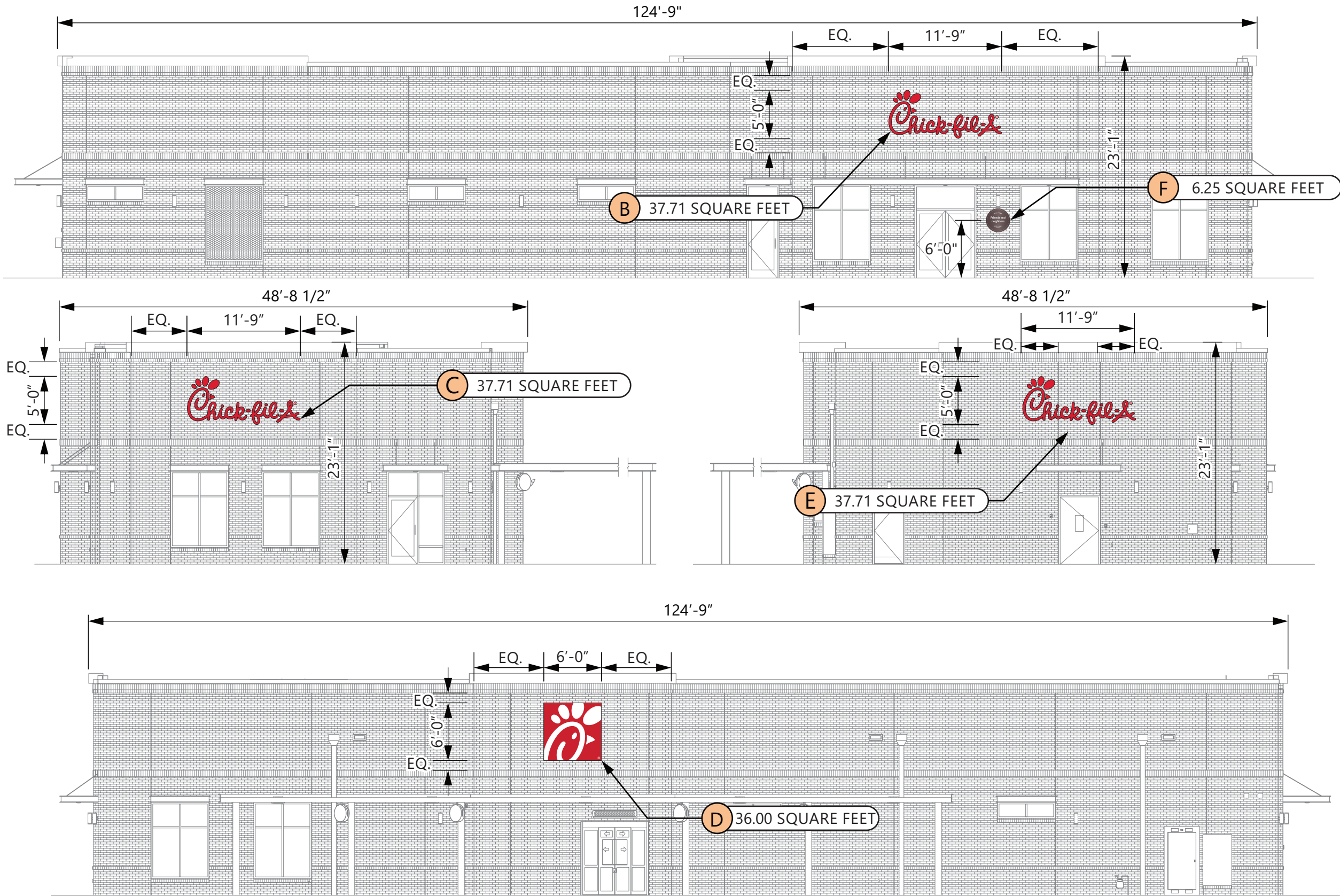
ALL ELECTRICAL  
SIGNS ARE  
120 VOLTS  
UNLESS  
OTHERWISE INDICATED

DRAWN BY Ben Holliday  
ACCOUNT REP. Ben Holliday  
DRAWING DATE July 27, 2023  
REVISION DATE May 7, 2025

STORE NUMBER	STORE ADDRESS
L05248	Chick-fil-A at Lee's Summit, MO (US 50 & SR 291) US Hwy 50 and MO State Route 291 Lee's Summit, MO 64081

THIS DRAWING IS AN ORIGINAL, UNPUBLISHED DESIGN CREATED BY CLAYTON SIGNS, INC. IT IS NOT TO BE REPRODUCED, CHANGED, OR EXHIBITED TO ANYONE OUTSIDE OF YOUR COMPANY IN WHOLE OR IN PART WITHOUT WRITTEN PERMISSION FROM THE OWNER OF CLAYTON SIGNS, INC. ANY SUCH ACTIONS MAY BE SUBJECT TO LEGAL ACTION IN A COURT OF LAW.  
© 2023 ALL RIGHTS RESERVED

SITE PLAN



SIGN B, F	
Width (feet)	Width (inches)
124	9.00
Height (feet)	Height (inches)
21	0.50
Area (SQ FT)	
2625	
Multiplier	
10%	
Area Allowed	
262.49	

SIGN C	
Width (feet)	Width (inches)
48	8.50
Height (feet)	Height (inches)
21	0.50
Area (SQ FT)	
1025	
Multiplier	
10%	
Area Allowed	
102.49	

SIGN D	
Width (feet)	Width (inches)
48	8.50
Height (feet)	Height (inches)
21	0.50
Area (SQ FT)	
1025	
Multiplier	
10%	
Area Allowed	
102.49	

SIGN E	
Width (feet)	Width (inches)
124	9.00
Height (feet)	Height (inches)
21	0.50
Area (SQ FT)	
2625	
Multiplier	
10%	
Area Allowed	
262.49	

ELEVATIONS

SCALE - 3/32" = 1'- 0"



5198 North Lake Drive  
Lake City, GA 30260  
404.361.3800  
www.claytonsigns.com

ELEVATIONS

DRAWING FILE - CFA - LEE'S SUMMIT, MO (US 50 & SR 291) SIGNAGE.CDR

ALL ELECTRICAL  
SIGNS ARE  
120 VOLTS  
UNLESS  
OTHERWISE INDICATED

DRAWN BY Ben Holliday  
ACCOUNT REP. Ben Holliday  
DRAWING DATE July 27, 2023  
REVISION DATE May 7, 2025

STORE NUMBER	STORE ADDRESS
L05248	Chick-fil-A at Lee's Summit, MO (US 50 & SR 291) US Hwy 50 and MO State Route 291 Lee's Summit, MO 64081

THIS DRAWING IS AN ORIGINAL, UNPUBLISHED DESIGN CREATED BY CLAYTON SIGNS, INC. IT IS NOT TO BE REPRODUCED, CHANGED, OR EXHIBITED TO ANYONE OUTSIDE OF YOUR COMPANY IN WHOLE OR IN PART WITHOUT WRITTEN PERMISSION FROM THE OWNER OF CLAYTON SIGNS, INC. ANY SUCH ACTIONS MAY BE SUBJECT TO LEGAL ACTION IN A COURT OF LAW.  
©2023 ALL RIGHTS RESERVED

P14 LSR BS

BUILDING  
ELEVATIONS

SPECIFICATIONS

SIGN CABINET IS SIGN COMP #2005 EXTRUDED CABINET WITH A SIGN COMP # 2085/2095 BLEED FLEX FACE FRAME  
CABINET IS INTERNALLY ILLUMINATED WHITE LED 6500K LIGHTS, SPACED EVENLY. PAINT INTERIOR OF CABINETS MATTE WHITE.  
CLOSED SUNDAY PANEL (IF SHOWN)  
IS .125" ALUM. ROUTED FACE BACKED ACRYLIC.

READER BOARD CABINET (IF SHOWN)  
.125" ALUM. FACE PANEL WITH ROUTED OPENING FOR READER BOARD AND COPY READING "CLOSED SUNDAY" APERCU SENTENCE CASE BOLD.  
HINGED VANDAL COVER FRAME WITH 187" THICK CLEAR POLYCARBONATE FACE WITH INSET .125" #7328 WHITE.  
READER FACE WITH ZIP TRACK TO ACCOMMODATE WAGNER ZIP LETTER SET THAT INCLUDES FRANKLIN GOTHIC EXTRA CONDENSED UPPERCASE LETTER SET OF 334 CHARACTERS WITH PUNCTUATION MARKS.

MASONRY WORK BY THE GENERAL CONTRACTOR  
FOUNDATION IS FURNISHED BY CLAYTON SIGNS, INC.

3M #3630-53 TRANSLUCENT CARDINAL RED TENSION FRAME COVER TO BE PAINTED  
GENESIS M SINGLE STAGE (G2-SERIES) RED #48247

WHITE BLEED 3M PANOGRAPHIC III FLEX FACE  
W/.125" #7328 WHITE PLEX

PAINTED MATTHEWS #74155 DARK BRONZE, SEMI-GLOSS

MASONRY TO MATCH BUILDING

DOUBLE FACED CABINET

LED'S GEWHDS96 -71K -DOUBLE SIDED  
POWER SUPPLY GEPS24 - 24V POWER SUPPLY

CONNECT THE AC LINE TO THE BLACK (LINE) AND WHITE (NEUTRAL) INPUT WIRES OF THE POWER SUPPLY (USING 18-14 AWG) TWIST ON WIRE CONNECTORS. GROUND POWER SUPPLY GREEN WIRE TO GROUNDING SCREW. REPLACE JUNCTION BOX COVER.

WET LOCATION

THIS SIGN IS INTENDED TO BE INSTALLED IN ACCORDANCE WITH REQUIREMENTS OF ARTICLE 600 OF THE NATIONAL ELECTRICAL CODE AND/OR APPLICABLE LOCAL CODES. THIS INCLUDES PROPER GROUNDING & BONDING OF THE SIGN.



5198 North Lake Drive  
Lake City, GA 30260  
404.361.3800  
www.claytonsigns.com

MONUMENT SIGN

DRAWING FILE - CFA - LEE'S SUMMIT, MO (US 50 & SR 291) SIGNAGE.CDR

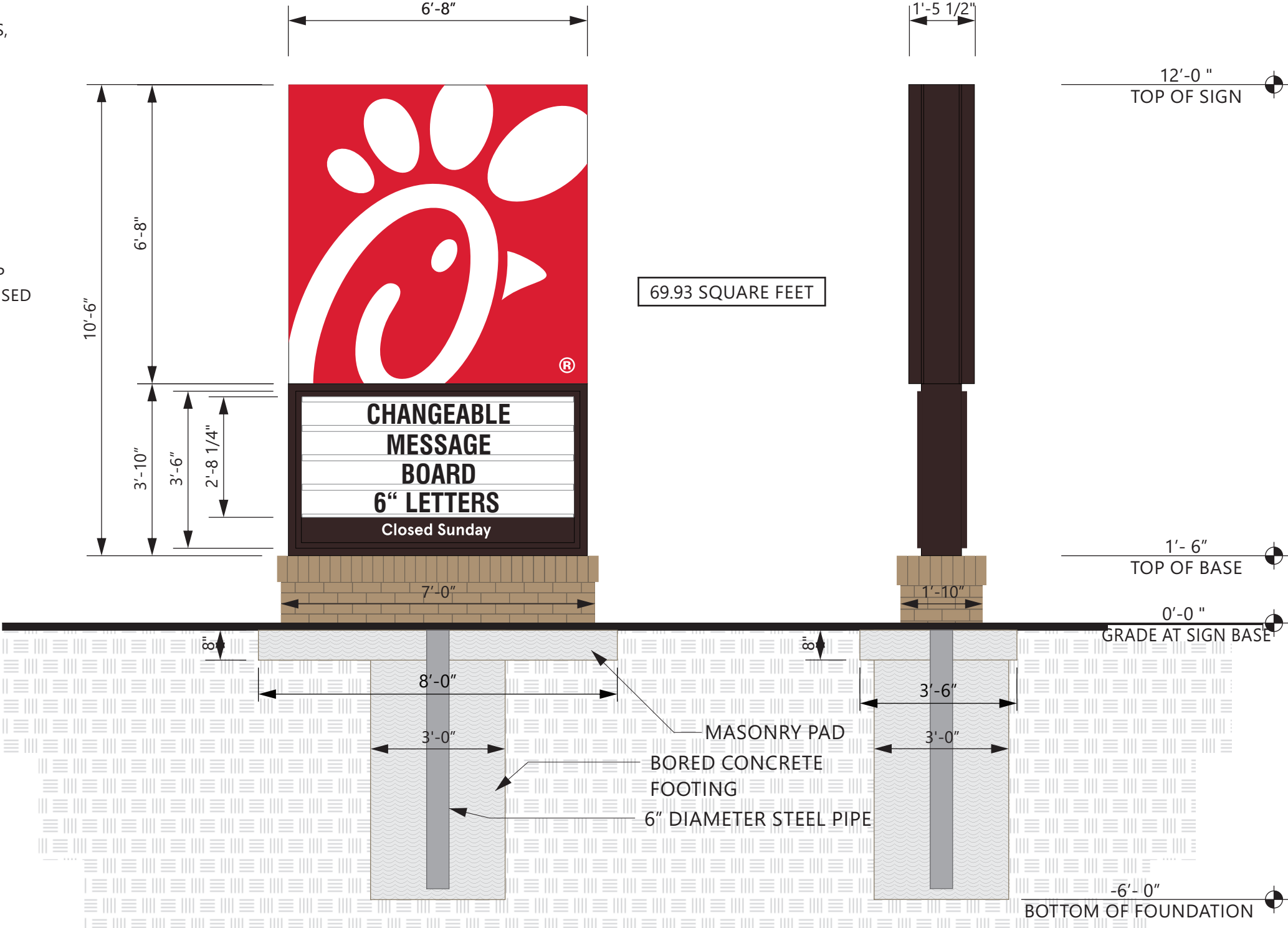
ALL ELECTRICAL  
SIGNS ARE  
120 VOLTS  
UNLESS  
OTHERWISE INDICATED

DRAWN BY Ben Holliday  
ACCOUNT REP. Ben Holliday  
DRAWING DATE July 27, 2023  
REVISION DATE May 7, 2025

STORE NUMBER	STORE ADDRESS
L05248	Chick-fil-A at Lee's Summit, MO (US 50 & SR 291) US Hwy 50 and MO State Route 291 Lee's Summit, MO 64081

THIS DRAWING IS AN ORIGINAL, UNPUBLISHED DESIGN CREATED BY CLAYTON SIGNS, INC. IT IS NOT TO BE REPRODUCED, CHANGED, OR EXHIBITED TO ANYONE OUTSIDE OF YOUR COMPANY IN WHOLE OR IN PART WITHOUT WRITTEN PERMISSION FROM THE OWNER OF CLAYTON SIGNS, INC. ANY SUCH ACTIONS MAY BE SUBJECT TO LEGAL ACTION IN A COURT OF LAW.  
©2023 ALL RIGHTS RESERVED

LOCATION  
A1



ELEVATION  
SCALE - 3/8" = 1'- 0"

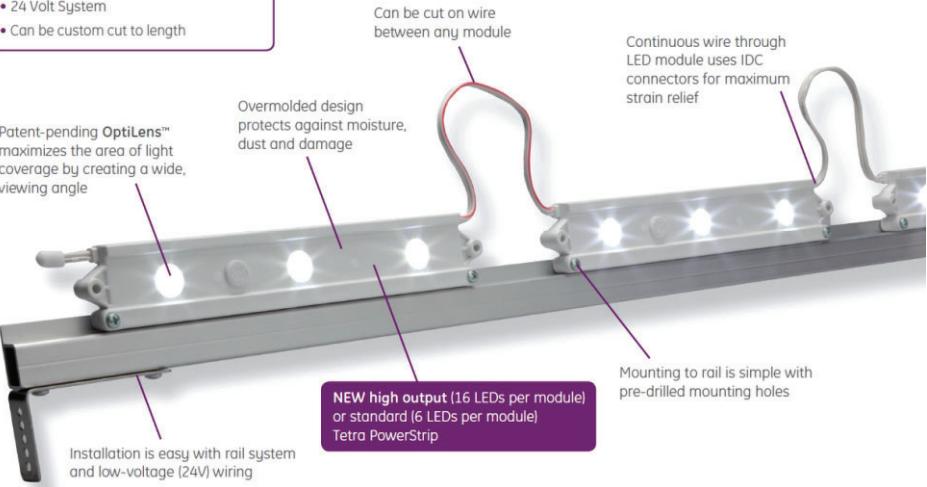
END VIEW  
SCALE - 3/8" = 1'- 0"



DOUBLE FACED CABINET LIGHTING

Tetra® PowerStrip DS

- Double-sided LED system
- 24 Volt System
- Can be custom cut to length



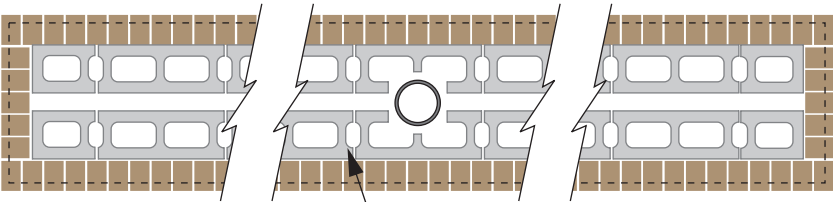
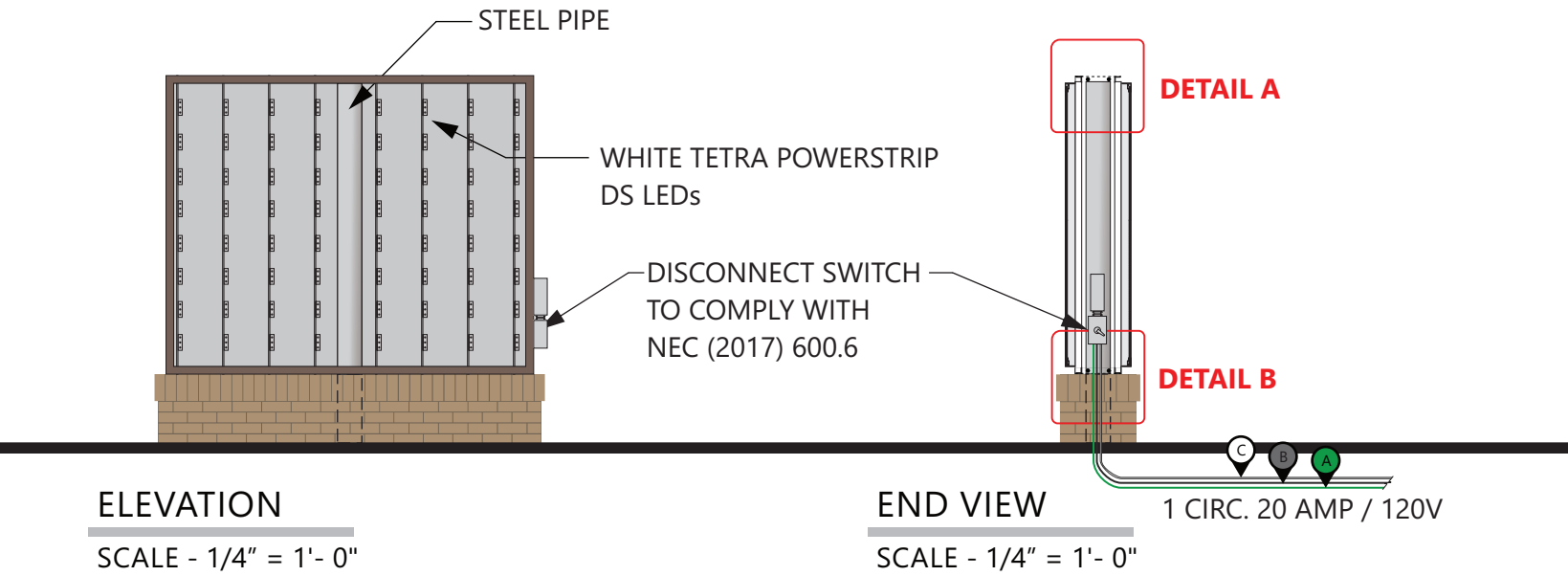
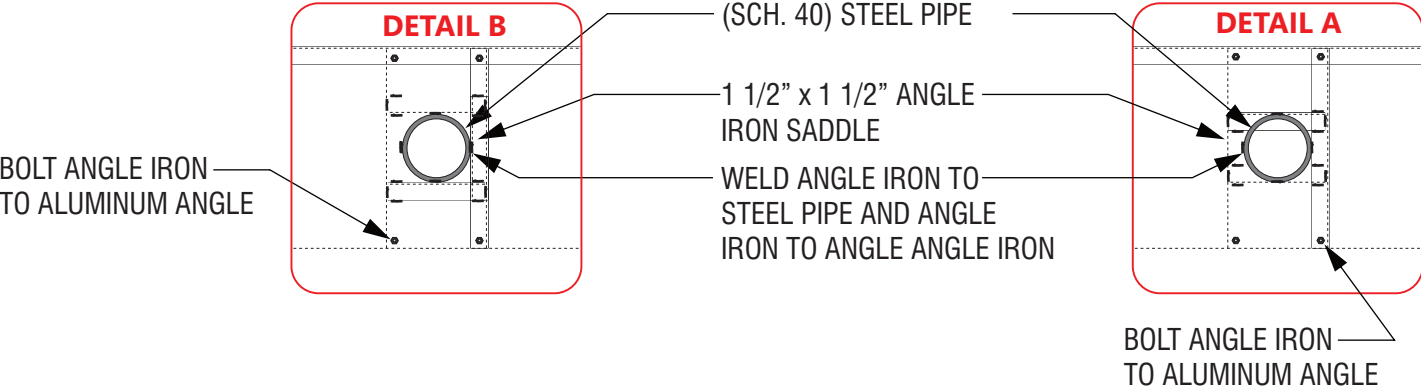
Technical Specifications

Specification Item	Wavelength	Typical Brightness (lumens/module)	LEDs/Module	Energy Consumption (Strip/Module)	Energy Consumption (System/Module)	Power Supply Loading	Viewing Angle
Tetra PowerStrip	7100K, 5000K 4100K, 3200K	267 200	3	3.13	3.58	16 Modules / 60W PS	140°
Tetra PowerStrip DS	7100K, 5000K 4100K, 3200K	534 400	6	6.24	7.14	16 Modules / 100W PS	140°
Tetra PowerStrip High Output	7100K, 5000K 4100K, 3200K	360 260	8	3.63	4.15	16 Modules / 60W PS	140°
Tetra PowerStrip DS High Output	7100K, 5000K 4100K, 3200K	720 520	16	6.55	7.14	14 Modules / 100W PS	140°

Specification Item	Tetra PowerStrip	
Cutting Resolution	Cut on wire between every module	
Power Supply	GEPS12-20 Input: 90-264VAC; Output: 12VDC GEPS12-60-NA Input: 108-305VAC; Output: 12VDC GEPS12-60-GL Input: 108-305VAC; Output: 12VDC GEPS12W-60 Input: 90-264VAC; Output: 12VDC GEPS12D-60U Input: 108-305VAC; Output: 12VDC GEPS12-180U Input: 90-305VAC; Output: 12VDC GEPS24-20 Input: 90-264VAC; Output: 24VDC GEPS24D-80U Input: 90-305VAC; Output: 24VDC GEPS24-100-NA Input: 108-305VAC; Output: 24VDC GEPS24-100-GL Input: 108-305VAC; Output: 24VDC GEPS24-180U Input: 90-305VAC; Output: 24VDC	
Maximum Supply Wire Limits	60W, 80W, 100W, 180W 20 ft. (6.1 m) 25 ft. (7.6 m) 35 ft. (10.6 m) 40 ft. (12.1 m) Wiring to be installed in accordance with Article 725 of the National Electric code (NEC).	20W 120 ft. (36.6 m) 16AWG/1.31mm <sup>2</sup> supply wire 14AWG/2.08mm <sup>2</sup> supply wire 12AWG/3.31mm <sup>2</sup> supply wire
Operating Environment	-40 °C to +60 °C	
Module Dimensions (h x l x w)	Tetra PowerStrip: 0.60 x 1.14 x 8.82 in. (15 x 29 x 224 mm) Tetra PowerStrip DS: 0.63 x 1.34 x 8.82 in. (16 x 34 x 224 mm)	Tetra PowerStrip High Output: 0.47 x 1.12 x 9.29 in. (12 x 29 x 236 mm) Tetra PowerStrip DS High Output: 0.55 x 1.32 x 8.98 in. (14 x 34 x 228 mm)
Sign Dimensions	For best results, recommended sign depth is 5 inches (127 mm) or greater	For best results, recommended sign depth is 10 inches (254 mm) or greater
Warranty	GE offers a limited system warranty of up to five (5) years	
System Certifications	IP66 rated: separate enclosure required, damp location rated	



THIS DRAWING IS INTENDED TO SHOW  
GENERAL CONSTRUCTION DETAILS  
SIZES OF CABINET  
AND BRICK MAY VARY



MASONRY PLAN VIEW

6" OR LESS CMU  
INSIDE OF BRICK

Electrical specifications:

Volts:	120	Amp.:	20	Circ.:	1
--------	-----	-------	----	--------	---

# Colors:

A	GREEN ELECTRICAL WIRE
B	BLACK ELECTRICAL WIRE
C	WHITE ELECTRICAL WIRE

DOUBLE FACED CABINET

WET LOCATION

LED'S GEWHDSB6-71K -DOUBLE SIDED  
POWER SUPPLY  
GEPS24 - 24V POWER SUPPLY

CONNECT THE AC LINE TO THE BLACK (LINE) AND WHITE (NEUTRAL) INPUT WIRES OF THE POWER SUPPLY USING 18-14 AWG TWIST ON WIRE CONNECTORS. GROUND POWER SUPPLY GREEN WIRE TO GROUNDING SCREW. REPLACE JUNCTION BOX COVER.

THIS SIGN IS INTENDED TO BE INSTALLED IN ACCORDANCE WITH REQUIREMENTS OF ARTICLE 600 OF THE NATIONAL ELECTRICAL CODE AND/OR APPLICABLE LOCAL CODES. THIS INCLUDES PROPER GROUNDING & BONDING OF THE SIGN.



5198 North Lake Drive  
Lake City, GA 30260  
404.361.3800  
www.claytonsigns.com

MONUMENT SIGN DETAILS

DRAWING FILE - CFA - LEE'S SUMMIT, MO (US 50 & SR 291) SIGNAGE.CDR

ALL ELECTRICAL  
SIGNS ARE  
120 VOLTS  
UNLESS  
OTHERWISE INDICATED

DRAWN BY Ben Holliday  
ACCOUNT REP. Ben Holliday  
DRAWING DATE July 27, 2023  
REVISION DATE May 7, 2025

STORE NUMBER	STORE ADDRESS
L05248	Chick-fil-A at Lee's Summit, MO (US 50 & SR 291) US Hwy 50 and MO State Route 291 Lee's Summit, MO 64081

THIS DRAWING IS AN ORIGINAL, UNPUBLISHED DESIGN CREATED BY CLAYTON SIGNS, INC. IT IS NOT TO BE REPRODUCED, CHANGED, OR EXHIBITED TO ANYONE OUTSIDE OF YOUR COMPANY IN WHOLE OR IN PART WITHOUT WRITTEN PERMISSION FROM THE OWNER OF CLAYTON SIGNS, INC.. ANY SUCH ACTIONS MAY BE SUBJECT TO LEGAL ACTION IN A COURT OF LAW.  
©2023 ALL RIGHTS RESERVED

LOCATION  
A1

SPECIFICATIONS

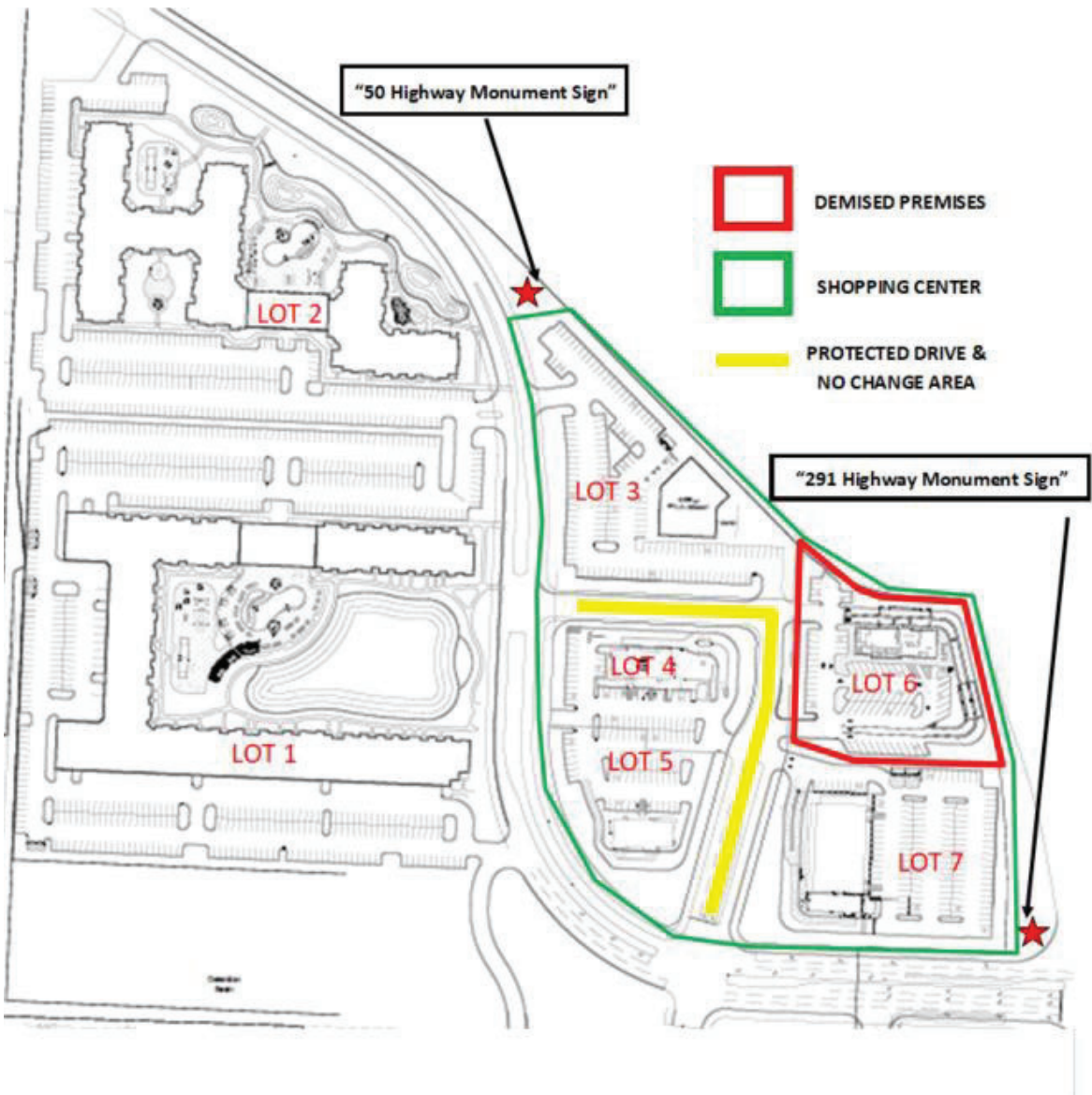
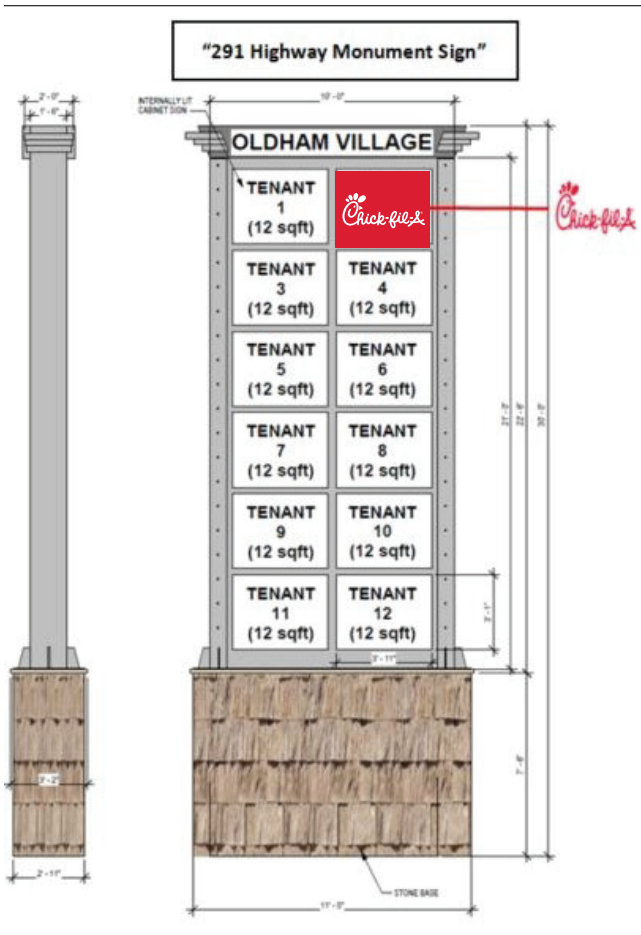
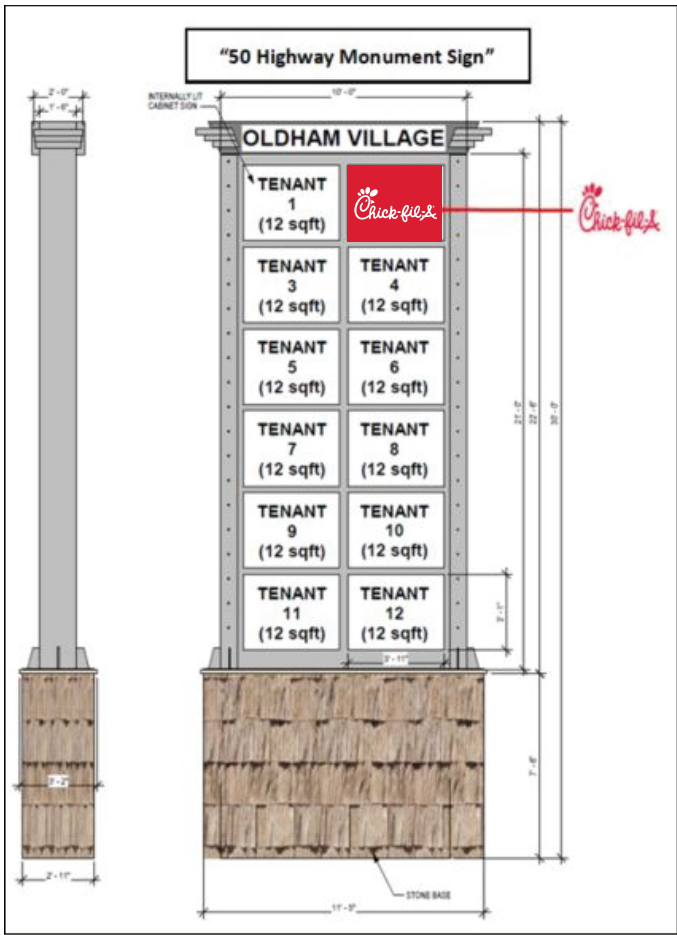
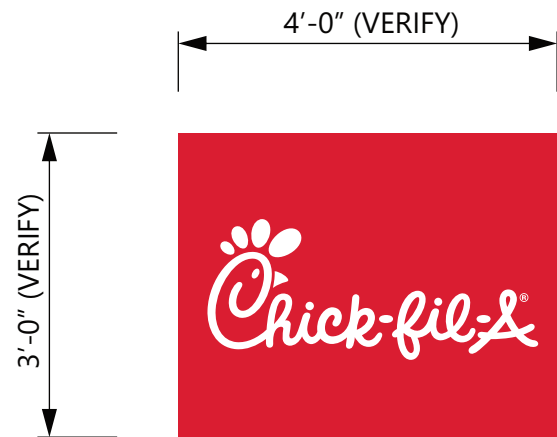
WHITE ACRYLIC FACE DECORATED WITH VINYL FILM  
GRAPHICS. FACES TO BE IN SAME POSITION ON BOTH SIDES  
OF EXISTING DOUBLE-FACED SIGN.



3M #3630-53 TRANSLUCENT CARDINAL RED



7328 WHITE ACRYLIC



5198 North Lake Drive  
Lake City, GA 30260  
404.361.3800  
www.claytonsigns.com

TENANT SIGNS

DRAWING FILE - CFA - LEE'S SUMMIT, MO (US 50 & SR 291) SIGNAGE.CDR

ALL ELECTRICAL  
SIGNS ARE  
120 VOLTS  
UNLESS  
OTHERWISE INDICATED

DRAWN BY Ben Holliday  
ACCOUNT REP. Ben Holliday  
DRAWING DATE July 27, 2023  
REVISION DATE May 7, 2025

STORE NUMBER	STORE ADDRESS
L05248	Chick-fil-A at Lee's Summit, MO (US 50 & SR 291) US Hwy 50 and MO State Route 291 Lee's Summit, MO 64081

THIS DRAWING IS AN ORIGINAL, UNPUBLISHED DESIGN CREATED BY CLAYTON SIGNS, INC. IT IS NOT TO BE REPRODUCED, CHANGED, OR EXHIBITED TO ANYONE OUTSIDE OF YOUR COMPANY IN WHOLE OR IN PART WITHOUT WRITTEN PERMISSION FROM THE OWNER OF CLAYTON SIGNS, INC. ANY SUCH ACTIONS MAY BE SUBJECT TO LEGAL ACTION IN A COURT OF LAW.  
©2023 ALL RIGHTS RESERVED

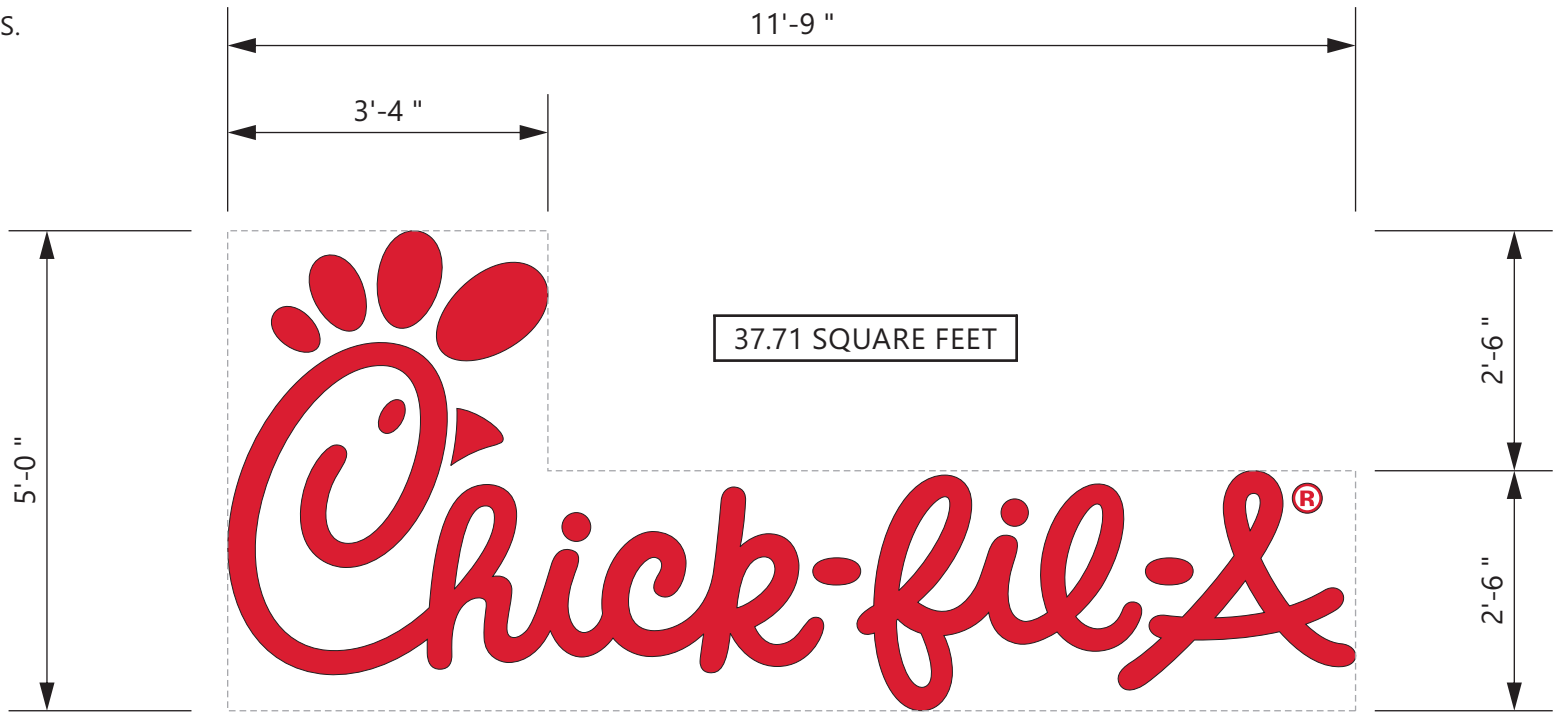
LOCATION  
A2/A3



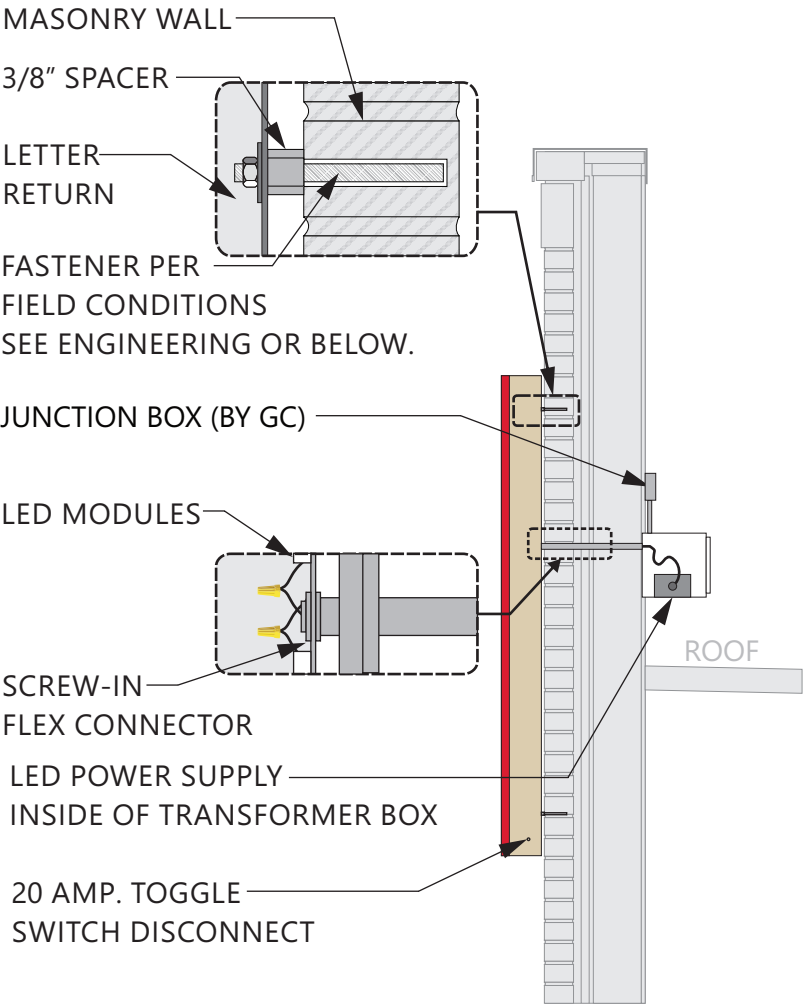
SPECIFICATIONS

CHICK-FIL-A SCRIPT LETTERS  
LETTERS ARE LED-ILLUMINATED  
CHANNEL LETTERS MOUNTED  
ON ALUMINUM SURFACE OF BUILDING  
WITH TRANSFORMERS REMOTELY  
LOCATED BEHIND THE WALL IN  
UL APPROVED TRANSFORMER BOXES.  
FACES ARE 3/16" ACRYLIC  
RETURNS ARE .063 ALUMINUM  
BACKS ARE .080 ALUMINUM  
ALL RETURNS ARE ARC-WELDED TO  
LETTER BACKS

- CHANNEL LETTER FACES  
2793 RED ACRYLIC  
TRIMCAP RETAINER-  
1" RED JEWELITE TRIMCAP
- ALUMINUM RETURNS  
PAINTED TO MATCH  
SHERWIN WILLIAMS  
SW6108 LATTE



ELEVATION  
SCALE - 1/2" = 1'- 0"



FASTENER NOTE:  
USE 18-8 STAINLESS STEEL BOLTS W/ SPACERS THRU EIFS.  
EXPANSION BOLTS IN CONCRETE OR BRICK WALLS.  
TOGGLE BOLTS IN CONCRETE BLOCK OR PANEL WALLS.  
TEK SCREWS IN METAL STUDS. LAG-BOLTS IN WOOD STUDS.  
ALL THREAD BOLTS WITH BLOCKING BETWEEN STUDS.

CROSS-SECTION  
SCALE - 1/2" = 1'- 0"

120 VOLT PRIMARY / 12 VOLT SECONDARY  
3 AMPS PER SIGN  
PRIMARY WIRING 12 GAUGE WITH 14 GAUGE GROUND  
SECONDARY WIRING 18 GAUGE

CLAYTON  
Signs

UL LISTED

CHANNEL LETTERS (RED ILLUMINATION)

WET LOCATION

LED's  
JTSLS016R-0.4 RED LED  
POWER SUPPLY  
BL-120-12-60 POWER SUPPLY

CONNECT THE AC LINE TO THE  
BLACK (LINE) AND WHITE  
(NEUTRAL) INPUT WIRES OF THE  
POWER SUPPLY USING 18-14 AWG  
TWIST ON WIRE CONNECTORS.  
GROUND POWER SUPPLY GREEN  
WIRE TO GROUNDING SCREW.  
REPLACE JUNCTION BOX COVER.

Green with  
yellow stripe  
(ground)  
White (neutral)  
Black (line)  
AC line

THIS SIGN IS ITENDED TO BE INSTALLED IN ACCORDANCE WITH REQUIREMENTS OF ARTICLE 600 OF THE NATIONAL ELECTRICAL CODE AND/OR APPLICABLE LOCAL CODES. THIS INCLUDES PROPER GROUNDING & BONDING OF THE SIGN.



5198 North Lake Drive  
Lake City, GA 30260  
404.361.3800  
www.claytonsigns.com

LED-ILLUMINATED  
CHANNEL LETTERS

DRAWING FILE - CFA - LEE'S SUMMIT, MO (US 50 & SR 291) SIGNAGE.CDR

ALL ELECTRICAL  
SIGNS ARE  
120 VOLTS  
UNLESS  
OTHERWISE INDICATED

DRAWN BY Ben Holliday  
ACCOUNT REP. Ben Holliday  
DRAWING DATE July 27, 2023  
REVISION DATE May 7, 2025

STORE NUMBER	STORE ADDRESS
L05248	Chick-fil-A at Lee's Summit, MO (US 50 & SR 291) US Hwy 50 and MO State Route 291 Lee's Summit, MO 64081

THIS DRAWING IS AN ORIGINAL, UNPUBLISHED DESIGN CREATED BY CLAYTON SIGNS, INC. IT IS NOT TO BE REPRODUCED, CHANGED, OR EXHIBITED TO ANYONE OUTSIDE OF YOUR COMPANY IN WHOLE OR IN PART WITHOUT WRITTEN PERMISSION FROM THE OWNER OF CLAYTON SIGNS, INC. ANY SUCH ACTIONS MAY BE SUBJECT TO LEGAL ACTION IN A COURT OF LAW.  
©2023 ALL RIGHTS RESERVED

LOCATION  
B,C,E

SPECIFICATIONS

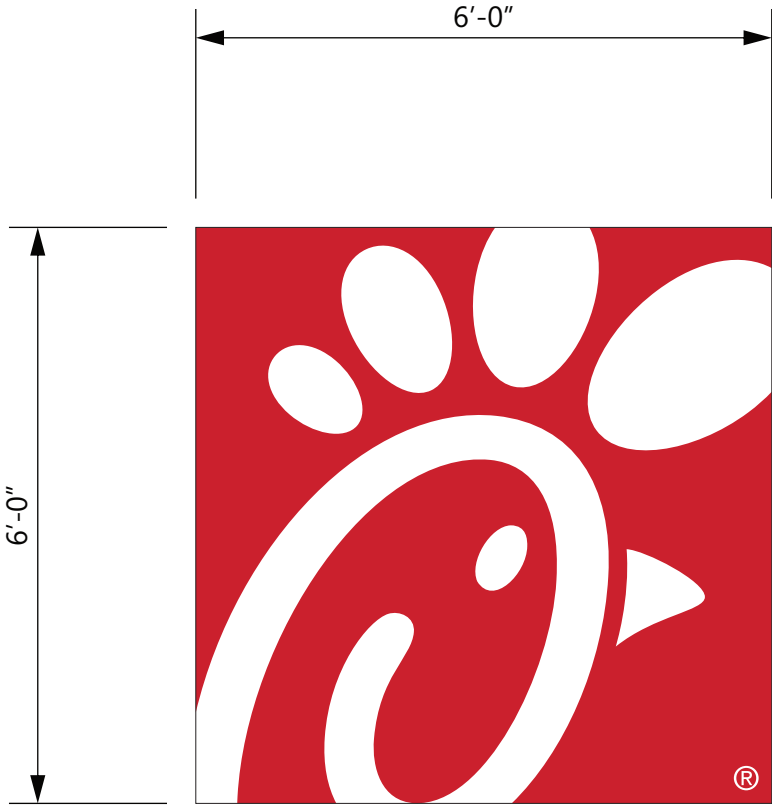
CABINET  
ALUMINUM CABINET HAS EXTRUDED ALUMINUM  
FACES  
FLEX FACES DECORATED WITH TRANSLUCENT VINYL  
FILM ON SURFACE OF ACRYLIC.  
INTERNALLY ILLUMINATED WITH WHITE LED 6500K LIGHTS.  
DISCONNECT SWITCH AS REQUIRED PER NEC.



FACES  
3M #3630-53 CARDINAL  
RED TRANSLUCENT VINYL  
CABINET  
GENESIS M SINGLE STAGE  
(G2-SERIES) RED #48247

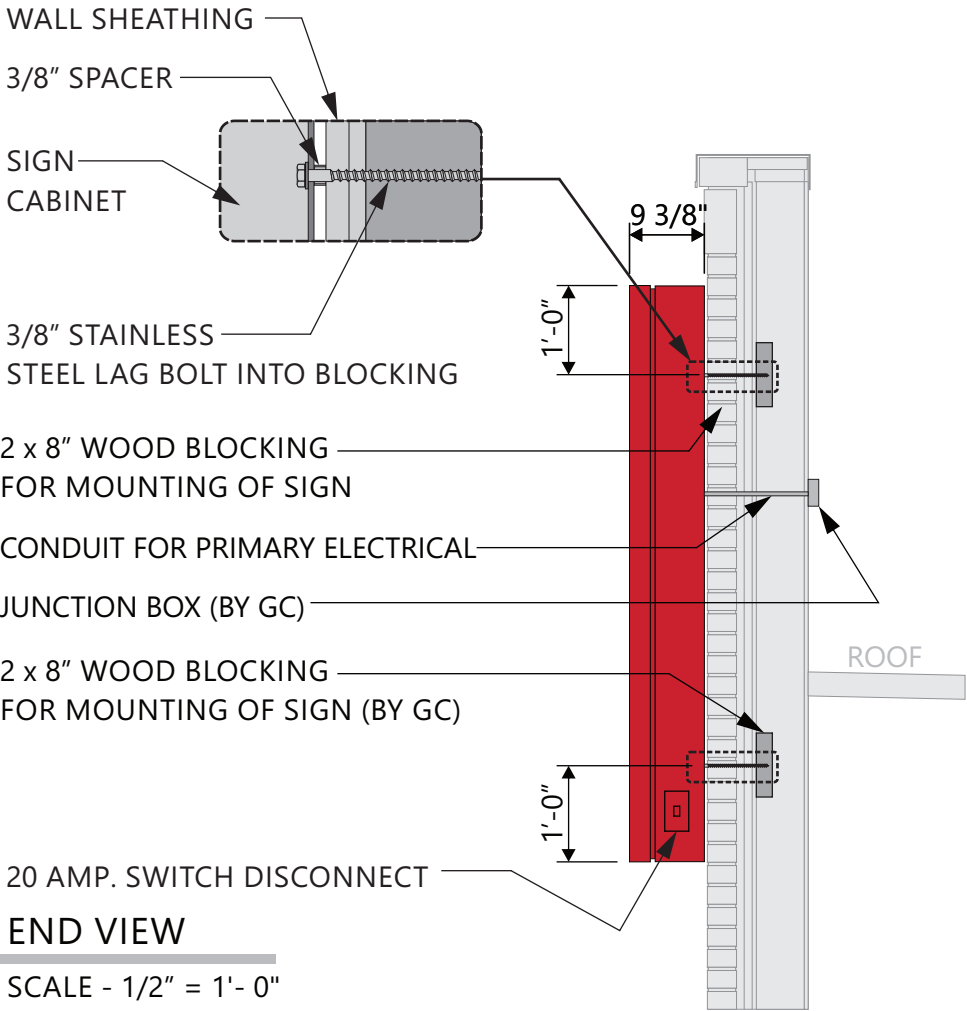


3M PANOGRAPHIC III FLEX FACE



36.00 SQUARE FEET

ELEVATION  
SCALE - 1/2" = 1'- 0"




END VIEW

FASTENER NOTE:  
USE 18-8 STAINLESS STEEL BOLTS W/ SPACERS THRU EIFS.  
EXPANSION BOLTS IN CONCRETE OR BRICK WALLS.  
TOGGLE BOLTS IN CONCRETE BLOCK OR PANEL WALLS.  
TEK SCREWS IN METAL STUDS. LAG-BOLTS IN WOOD STUDS.  
ALL THREAD BOLTS WITH BLOCKING BETWEEN STUDS.

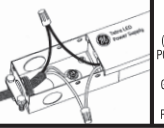
CROSS-SECTION

120 VOLT PRIMARY / 12 VOLT SECONDARY  
3 AMPS PER SIGN  
PRIMARY WIRING 12 GAUGE WITH 14 GAUGE GROUND  
SECONDARY WIRING 18 GAUGE

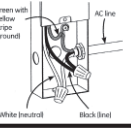


**SINGLE FACED CABINET**

LED's  
GEWHSPS3 - 71K - SINGLED SID  
POWER SUPPLY  
GEPST2 - 12V POWER SUPPLY



CONNECT THE AC LINE TO THE  
BLACK (LINE) AND WHITE  
(NEUTRAL) INPUT WIRES OF THE  
POWER SUPPLY USING 18-14 AWG  
TWIST ON WIRE CONNECTORS.  
GROUND POWER SUPPLY GREEN  
WIRE TO GROUNDING SCREW.  
REPLACE JUNCTION BOX COVER.



**WET LOCATION**

THIS SIGN IS ITENDED TO BE INSTALLED IN ACCORDANCE WITH REQUIREMENTS OF ARTICLE 600 OF THE NATIONAL ELECTRICAL CODE AND/OR APPLICABLE LOCAL CODES. THIS INCLUDES PROPER GROUNDING & BONDING OF THE SIGN.



5198 North Lake Drive  
Lake City, GA 30260  
404.361.3800  
www.claytonsigns.com

WALL SIGN

DRAWING FILE - CFA - LEE'S SUMMIT, MO (US 50 & SR 291) SIGNAGE.CDR

ALL ELECTRICAL  
SIGNS ARE  
120 VOLTS  
UNLESS  
OTHERWISE INDICATED

DRAWN BY Ben Holliday  
ACCOUNT REP. Ben Holliday  
DRAWING DATE July 27, 2023  
REVISION DATE May 7, 2025

STORE NUMBER	STORE ADDRESS
L05248	Chick-fil-A at Lee's Summit, MO (US 50 & SR 291) US Hwy 50 and MO State Route 291 Lee's Summit, MO 64081

THIS DRAWING IS AN ORIGINAL, UNPUBLISHED DESIGN CREATED BY CLAYTON SIGNS, INC. IT IS NOT TO BE REPRODUCED, CHANGED, OR EXHIBITED TO ANYONE OUTSIDE OF YOUR COMPANY IN WHOLE OR IN PART WITHOUT WRITTEN PERMISSION FROM THE OWNER OF CLAYTON SIGNS, INC. ANY SUCH ACTIONS MAY BE SUBJECT TO LEGAL ACTION IN A COURT OF LAW.  
©2023 ALL RIGHTS RESERVED

LOCATION  
D

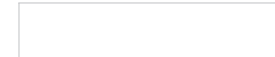
SPECIFICATIONS

ALUMINUM CONSTRUCTION CABINET WITH ROUTED ALUMINUM FACES BACKED WITH ALUMINUM  
ALL EXPOSED FASTENERS TO BE PAINTED AND TOUCHED UP WITH SIGN BACKGROUND COLOR

COLORS



MATTHEWS PAINT  
EQUUS BRONZE METALLIC  
MP20181



MATTHEWS MP32071  
SHEEPS WOOL SATIN FINISH

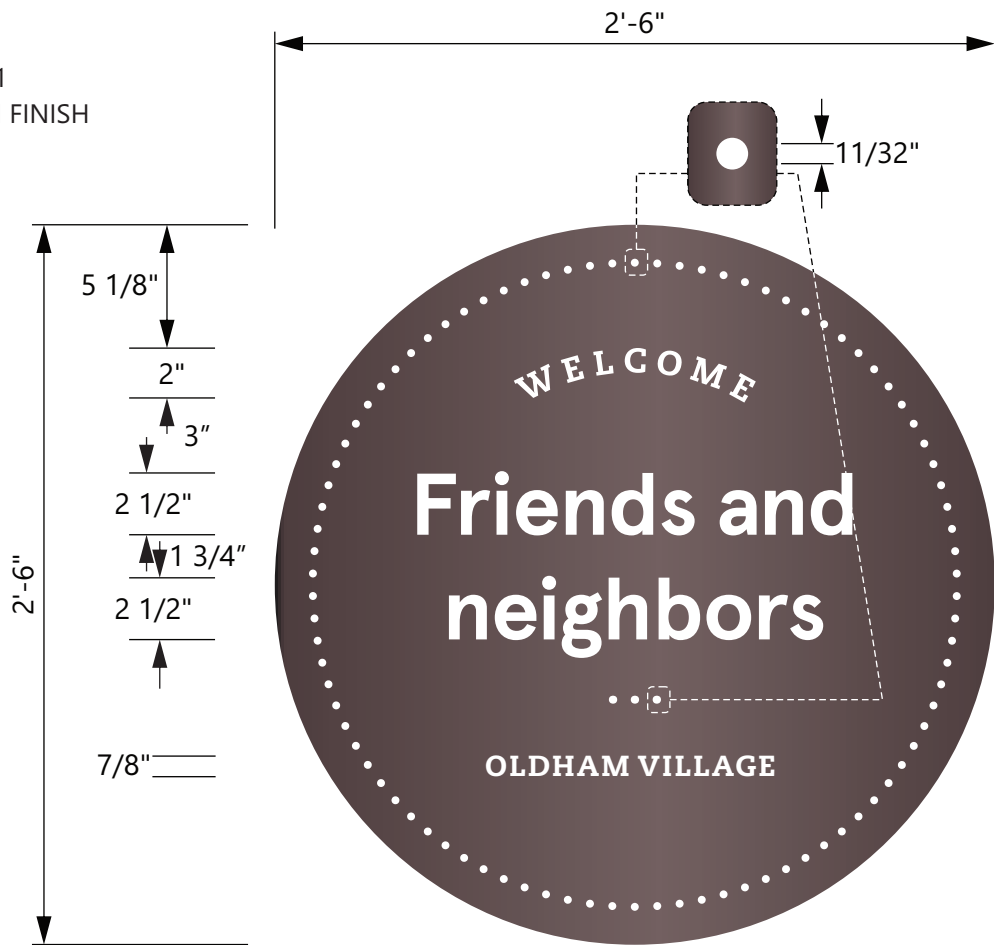
HEIGHT x WIDTH  
6.25 SQUARE FEET

AREA =  $\pi r^2$   
4.91 SQUARE FEET

DOUBLE CHECK STORE NAME  
BEFORE FABRICATING THE SIGN



ISOMETRIC VIEW  
NOT TO SCALE



ELEVATION  
SCALE - 1 1/2" = 1'- 0"

FONTS -  
APERCU BOLD  
CAECILIA COM 85 HEAVY



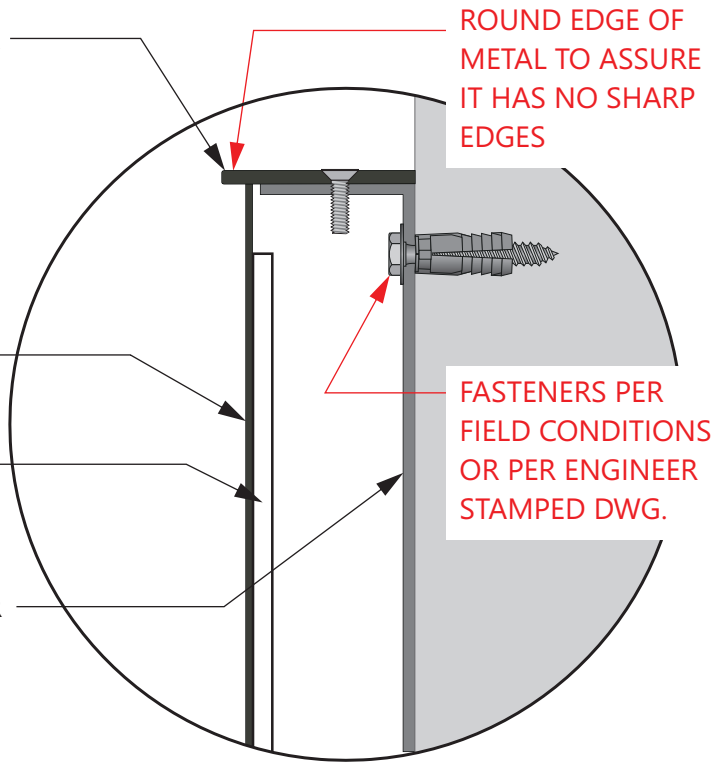
END VIEW  
SCALE - 1 1/2" = 1'- 0"

0.125" x 2.5" ALUMINUM RETURN SLIP ROLLED FOR SMOOTH EDGE. PAINTED WITH SATIN FINISH. WELDED TO ALUMINUM FACE. FACE IS INSET TO CREATE 0.375" LIP. SEAMS BETWEEN RETURN AND FACE TO BE FILLED AND GROUND SMOOTH. EXPOSED EDGES SMOOTHED & PAINTED. PRE-DRILLED MOUNTING HOLES AT TOP AND BOTTOM OF RETURN.

.063" ALUMINUM FACE WITH LASER-CUT COPY PAINTED ON BOTH SIDES. SATIN FINISH.

.080" ALUMINUM BACKER PANEL PAINTED WITH SATIN FINISH SECURED TO ALUMINUM FACE WITH 3M468MP-MP200 VHB TAPE.

2" DEEP FABRICATED ALUMINUM RECEIVER BACKER MOUNTED TO WALL WITH SCREWS. CABINET FACE SECURED TO RECEIVER BACKER WITH COUNTER-SUNK SCREWS THROUGH TOP AND BOTTOM.



DETAIL  
NOT TO SCALE



5198 North Lake Drive  
Lake City, GA 30260  
404.361.3800  
www.claytonsigns.com

WELCOME WALL SIGN  
DIMENSIONAL STAMP

DRAWING FILE - CFA - LEE'S SUMMIT, MO (US 50 & SR 291) SIGNAGE.CDR

ALL ELECTRICAL  
SIGNS ARE  
120 VOLTS  
UNLESS  
OTHERWISE INDICATED

DRAWN BY Ben Holliday  
ACCOUNT REP. Ben Holliday  
DRAWING DATE July 27, 2023  
REVISION DATE May 7, 2025

STORE NUMBER	STORE ADDRESS
L05248	Chick-fil-A at Lee's Summit, MO (US 50 & SR 291) US Hwy 50 and MO State Route 291 Lee's Summit, MO 64081

THIS DRAWING IS AN ORIGINAL, UNPUBLISHED DESIGN CREATED BY CLAYTON SIGNS, INC. IT IS NOT TO BE REPRODUCED, CHANGED, OR EXHIBITED TO ANYONE OUTSIDE OF YOUR COMPANY IN WHOLE OR IN PART WITHOUT WRITTEN PERMISSION FROM THE OWNER OF CLAYTON SIGNS, INC. ANY SUCH ACTIONS MAY BE SUBJECT TO LEGAL ACTION IN A COURT OF LAW.  
©2023 ALL RIGHTS RESERVED

LOCATION  
F



SPECIFICATIONS

ALUMINUM CONSTRUCTION CABINETS  
WITH DIGITAL DISPLAY BOARDS  
WITH STATIC IMAGES

MENU BOARDS FURNISHED  
BY COATES GROUP AND  
INSTALLED BY HONOR BUILT

MENU BOARD COLUMN AND FRAMING  
FURNISHED AND INSTALLED BY  
PATTISON SIGN GROUP

ANCHOR CAGES AND FOOTINGS  
FURNISHED AND INSTALLED BY  
CLAYTON SIGNS

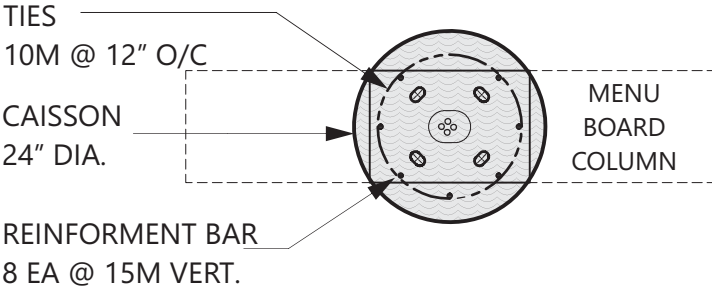
COLORS



CHICK-FIL-A DARK BRONZE

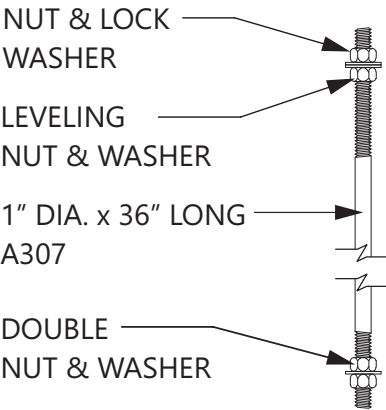
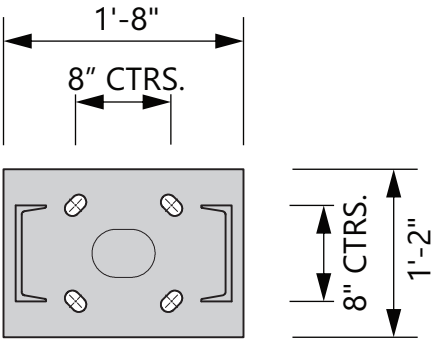


WHITE REFLECTIVE VINYL FILM



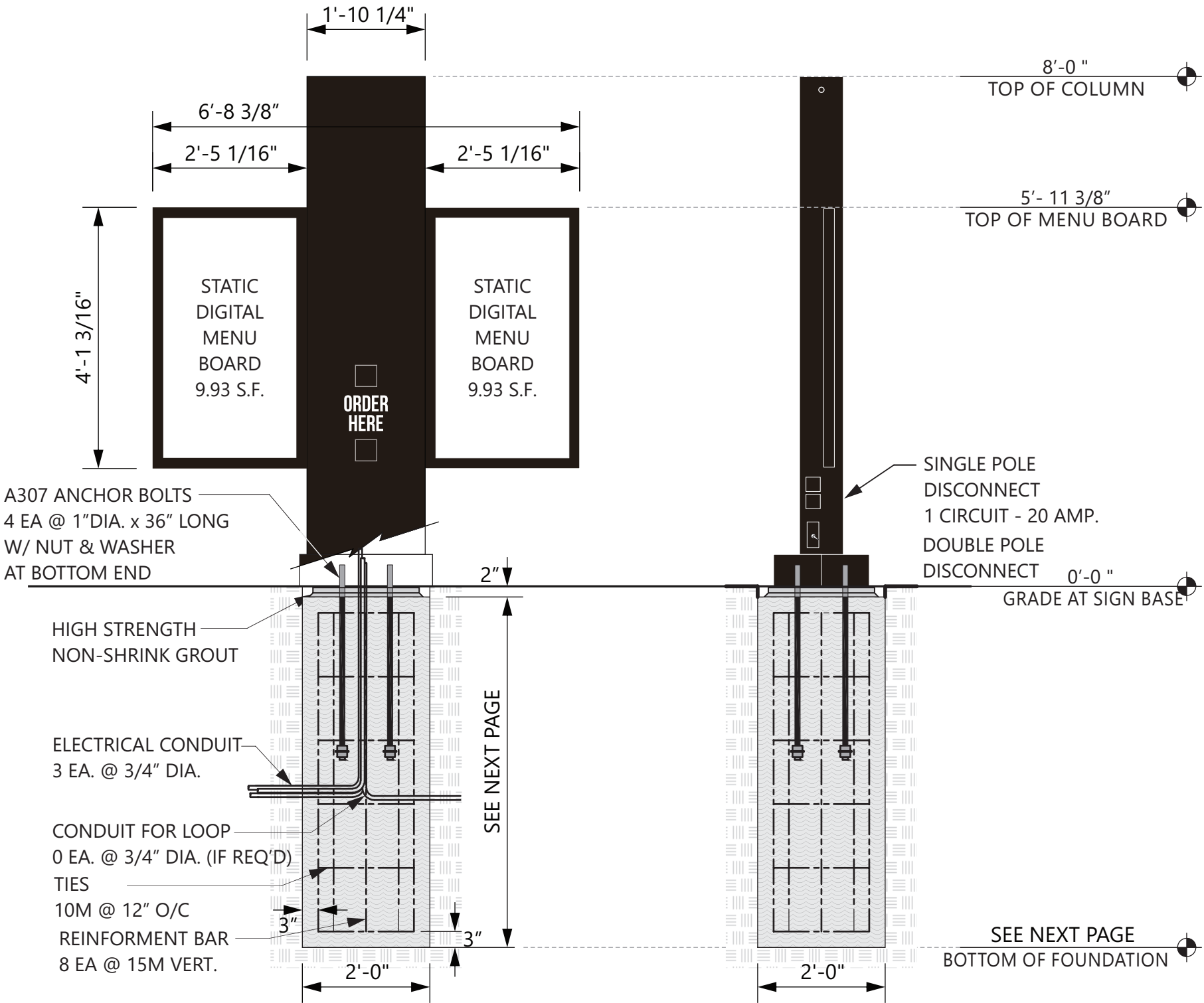
PLAN VIEW

SCALE - 1/2" = 1'- 0"



ANCHOR BOLT - QTY. 4  
NOT TO SCALE

BASE PLATE DETAIL  
SCALE - 3/4" = 1'- 0"



ELEVATION

SCALE - 1/2" = 1'- 0"

END VIEW

SCALE - 1/2" = 1'- 0"



5198 North Lake Drive  
Lake City, GA 30260  
404.361.3800  
www.claytonsigns.com

STATIC DIGITAL DRIVE-THRU  
MENU BOARDS

DRAWING FILE - CFA - LEE'S SUMMIT, MO (US 50 & SR 291) SIGNAGE.CDR

ALL ELECTRICAL  
SIGNS ARE  
120 VOLTS  
UNLESS  
OTHERWISE INDICATED

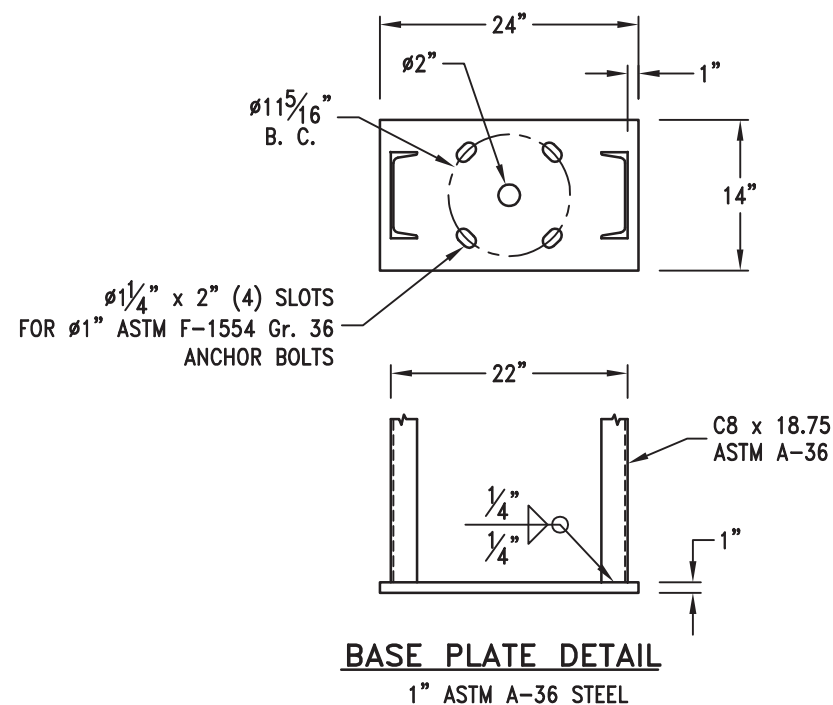
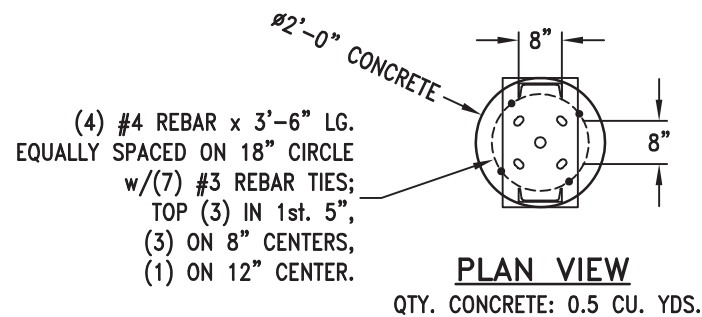
DRAWN BY Ben Holliday  
ACCOUNT REP. Ben Holliday  
DRAWING DATE July 27, 2023  
REVISION DATE May 7, 2025

STORE NUMBER	STORE ADDRESS
L05248	Chick-fil-A at Lee's Summit, MO (US 50 & SR 291) US Hwy 50 and MO State Route 291 Lee's Summit, MO 64081

THIS DRAWING IS AN ORIGINAL, UNPUBLISHED DESIGN CREATED  
BY CLAYTON SIGNS, INC. IT IS NOT TO BE REPRODUCED,  
CHANGED, OR EXHIBITED TO ANYONE OUTSIDE OF YOUR  
COMPANY IN WHOLE OR IN PART WITHOUT WRITTEN PERMISSION  
FROM THE OWNER OF CLAYTON SIGNS, INC. ANY SUCH ACTIONS  
MAY BE SUBJECT TO LEGAL ACTION IN A COURT OF LAW.

©2023 ALL RIGHTS RESERVED

LOCATION  
H1/H2

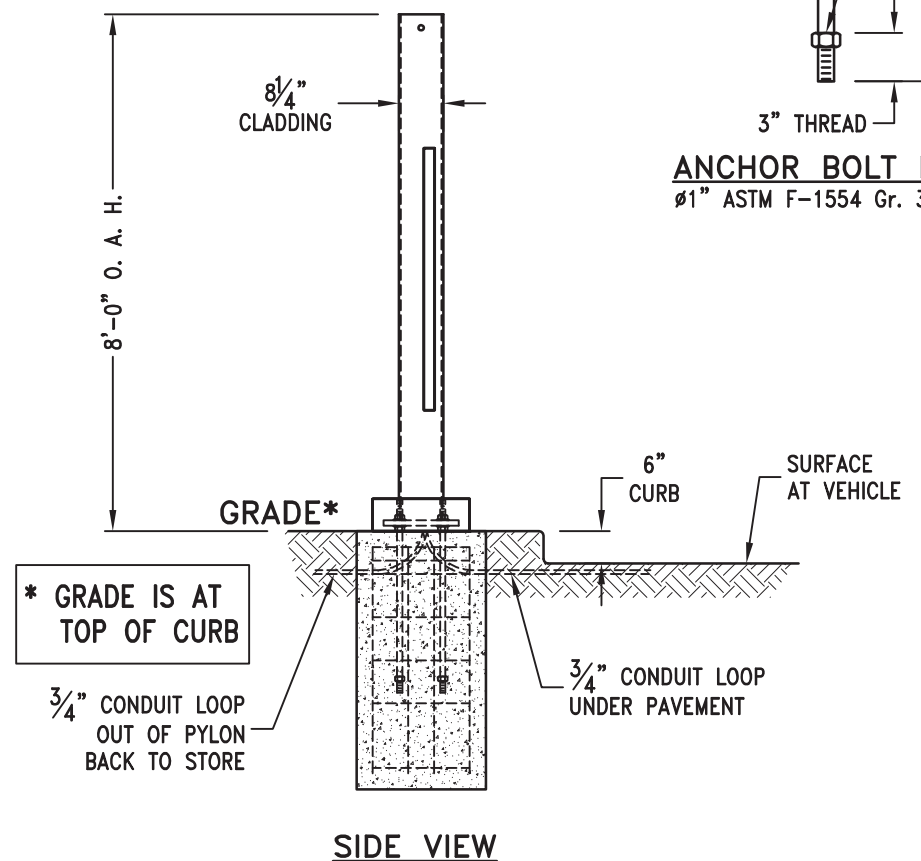
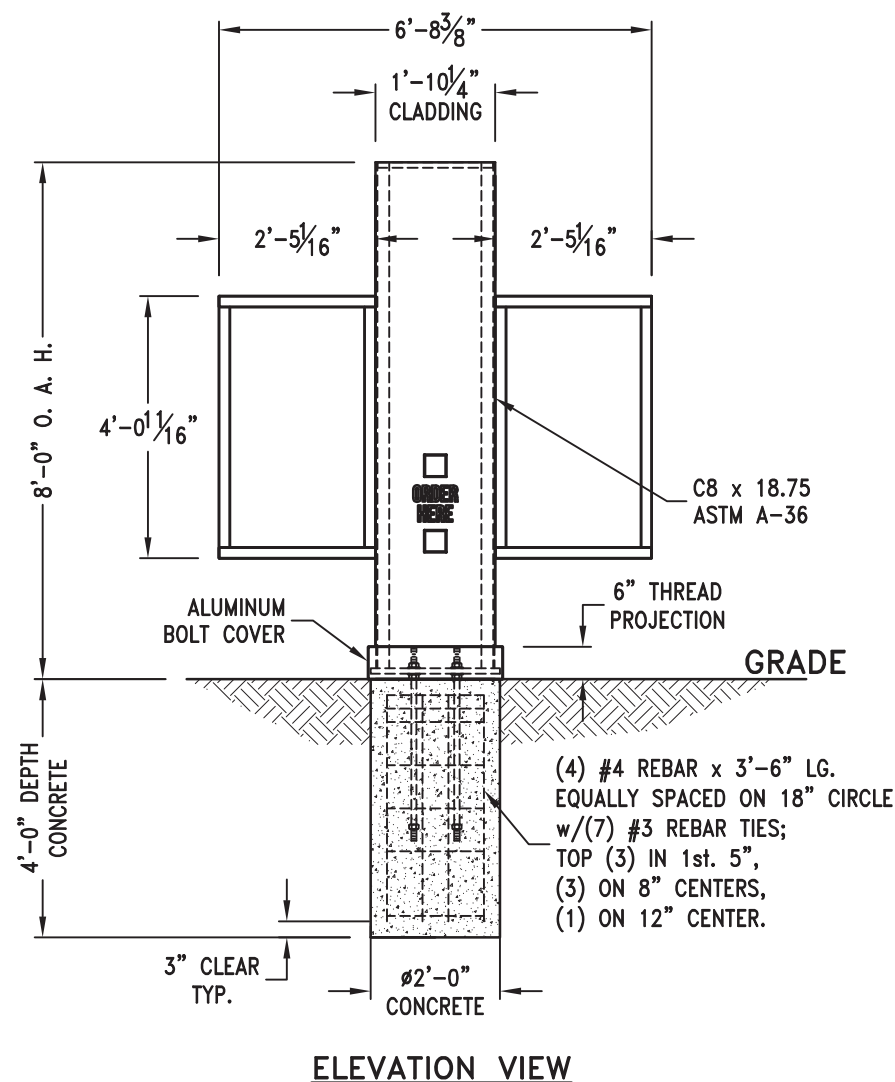


#### FOUNDATION DESIGN NOTES:

- Concrete shall have a minimum compressive strength of 3000 PSI at 28 days.
- Reinforcing steel shall be ASTM A-615 Gr. 60.
- Caisson footing designed using a soil bearing force of 150 PSF per foot Lateral. If this soil condition does not exist, it is the Erector's responsibility to have a new footing designed for the existing soil conditions by a Licensed Engineer.
- Anchor bolts shall be ASTM F-1554 Gr. 36 steel.

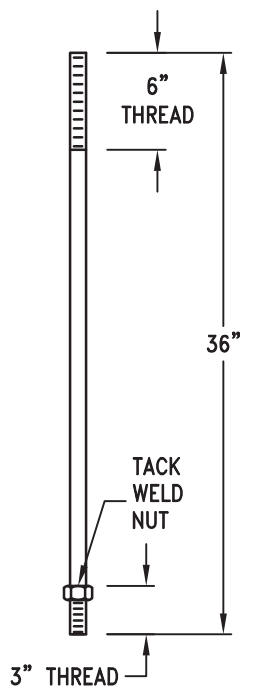
#### DESIGN WIND LOAD:

Based on the 2015 International Building Code (ASCE 7-10) using Risk Category II, Exposure C and 115 mph wind speed.



#### ANCHOR BOLT DETAIL

Ø1" ASTM F-1554 Gr. 36 STEEL



5198 North Lake Drive  
Lake City, GA 30260  
404.361.3800  
www.claytonsigns.com

#### STATIC DIGITAL DRIVE-THRU MENU BOARDS

DRAWING FILE - CFA - LEE'S SUMMIT, MO (US 50 & SR 291) SIGNAGE.CDR

ALL ELECTRICAL  
SIGNS ARE  
120 VOLTS  
UNLESS  
OTHERWISE INDICATED

DRAWN BY Ben Holliday  
ACCOUNT REP. Ben Holliday  
DRAWING DATE July 27, 2023  
REVISION DATE May 7, 2025

STORE NUMBER  
**L05248**

#### STORE ADDRESS

Chick-fil-A at Lee's Summit, MO (US 50 & SR 291)  
US Hwy 50 and MO State Route 291  
Lee's Summit, MO 64081

THIS DRAWING IS AN ORIGINAL, UNPUBLISHED DESIGN CREATED BY CLAYTON SIGNS, INC. IT IS NOT TO BE REPRODUCED, CHANGED, OR EXHIBITED TO ANYONE OUTSIDE OF YOUR COMPANY IN WHOLE OR IN PART WITHOUT WRITTEN PERMISSION FROM THE OWNER OF CLAYTON SIGNS, INC. ANY SUCH ACTIONS MAY BE SUBJECT TO LEGAL ACTION IN A COURT OF LAW.

©2023 ALL RIGHTS RESERVED

LOCATION  
**H1/H2**

SPECIFICATIONS

SIGN PANELS

PANELS ARE .080 ALUMINUM WITH REFLECTIVE BACKGROUND AND GRAPHICS.

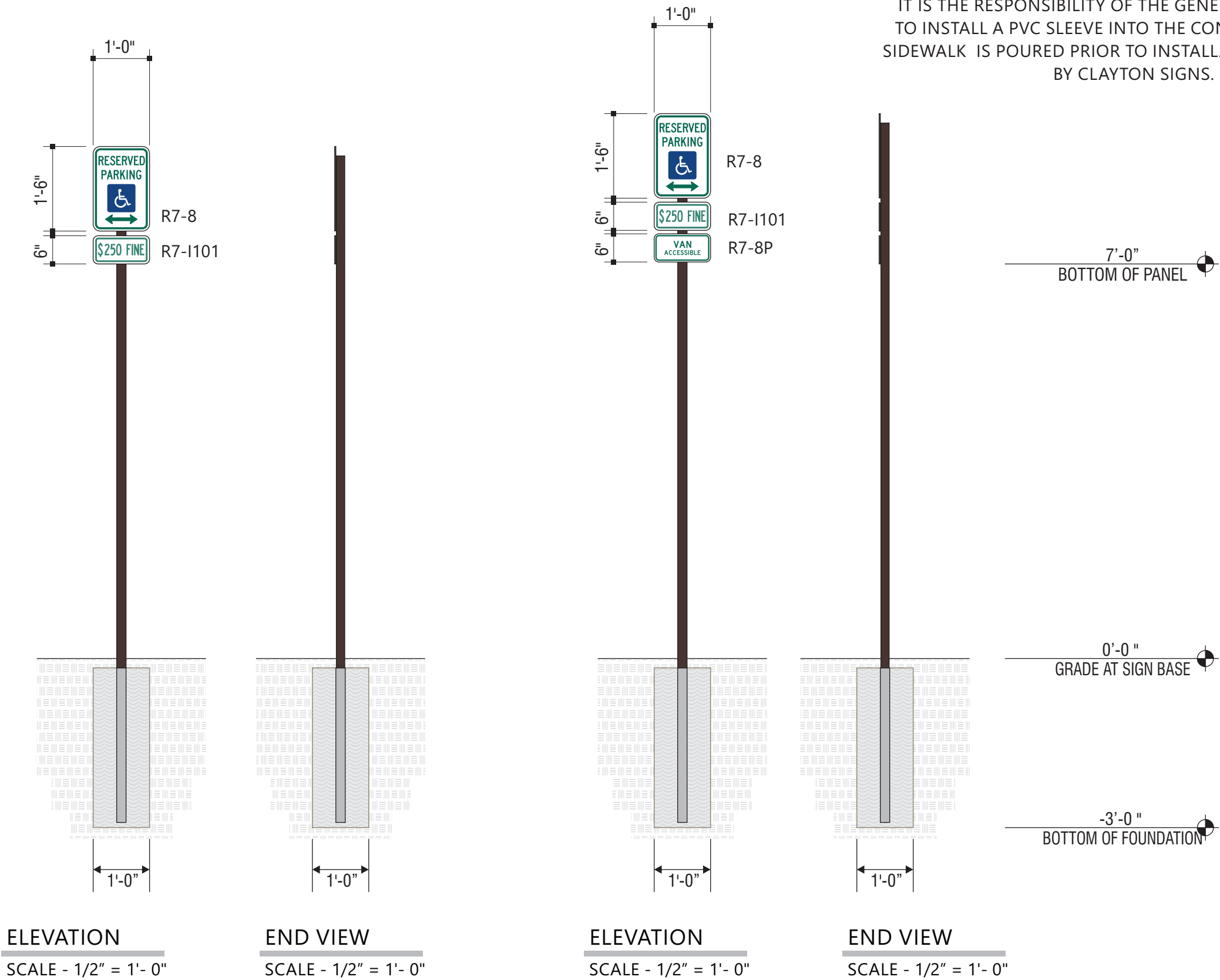
SIGN POSTS

POSTS ARE 2" x 2" SQUARE ALUMINUM TUBING CAPPED ON TOP



BACK OF SIGN PANEL AND POST  
MP 20181 DARK BRONZE  
SW #DDM460012

NOTE: IF THIS SIGN IS LOCATED ON THE SIDEWALK THEN IT IS THE RESPONSIBILITY OF THE GENERAL CONTRACTOR TO INSTALL A PVC SLEEVE INTO THE CONCRETE WHEN THE SIDEWALK IS POURED PRIOR TO INSTALLATION OF THE SIGN BY CLAYTON SIGNS.



5198 North Lake Drive  
Lake City, GA 30260  
404.361.3800  
www.claytonsigns.com

DOT REGULATORY TRAFFIC SIGNS

DRAWING FILE - CFA - LEE'S SUMMIT, MO (US 50 & SR 291) SIGNAGE.CDR

ALL ELECTRICAL  
SIGNS ARE  
120 VOLTS  
UNLESS  
OTHERWISE INDICATED

DRAWN BY Ben Holliday  
ACCOUNT REP. Ben Holliday  
DRAWING DATE July 27, 2023  
REVISION DATE May 7, 2025

STORE NUMBER	STORE ADDRESS
L05248	Chick-fil-A at Lee's Summit, MO (US 50 & SR 291) US Hwy 50 and MO State Route 291 Lee's Summit, MO 64081

THIS DRAWING IS AN ORIGINAL, UNPUBLISHED DESIGN CREATED BY CLAYTON SIGNS, INC. IT IS NOT TO BE REPRODUCED, CHANGED, OR EXHIBITED TO ANYONE OUTSIDE OF YOUR COMPANY IN WHOLE OR IN PART WITHOUT WRITTEN PERMISSION FROM THE OWNER OF CLAYTON SIGNS, INC. ANY SUCH ACTIONS MAY BE SUBJECT TO LEGAL ACTION IN A COURT OF LAW.  
©2023 ALL RIGHTS RESERVED

LOCATION  
K1/K2



SPECIFICATIONS

SIGN PANELS

PANELS ARE .080 ALUMINUM  
WITH REFLECTIVE BACKGROUND  
AND GRAPHICS.

SIGN POSTS

POSTS ARE 2" x 2" SQUARE  
ALUMINUM TUBING CAPPED ON TOP



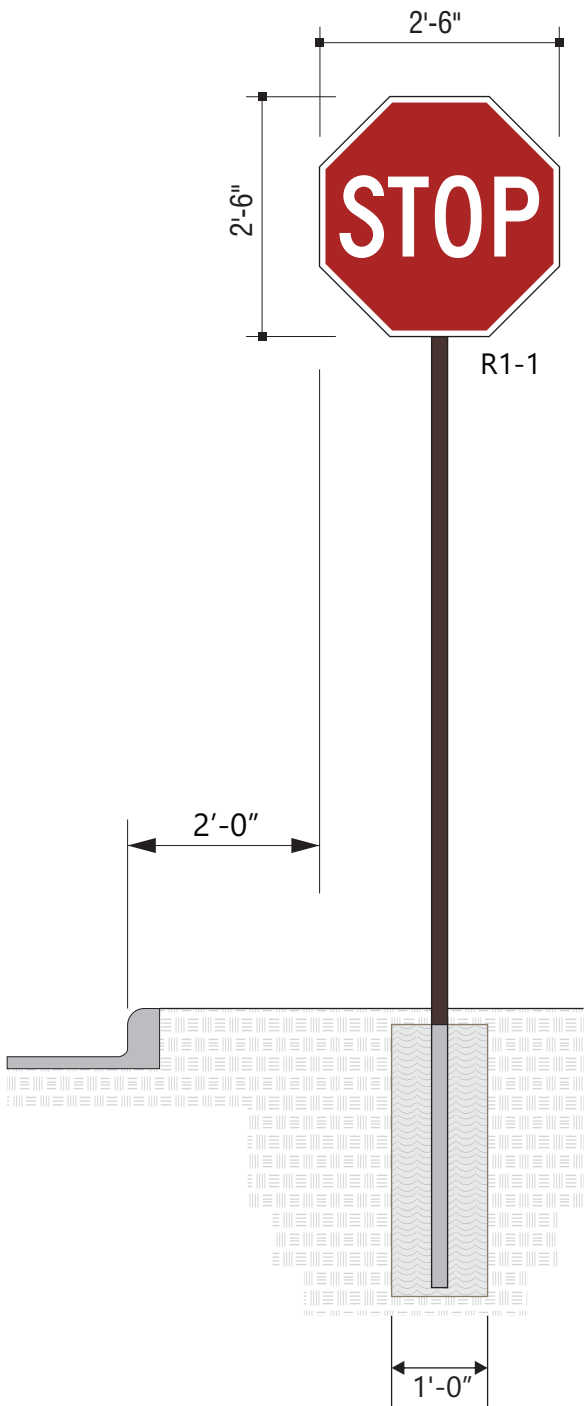
SIGN PANEL  
3M #680-82 REFLECTIVE RED.



SIGN PANEL  
3M #680-10 REFLECTIVE WHITE

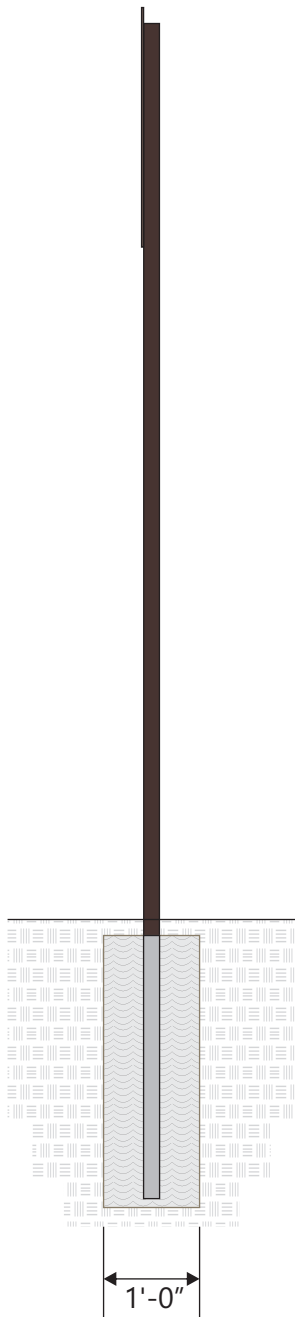


BACK OF SIGN PANEL AND POST  
MP 20181 DARK BRONZE  
SW #DDM460012



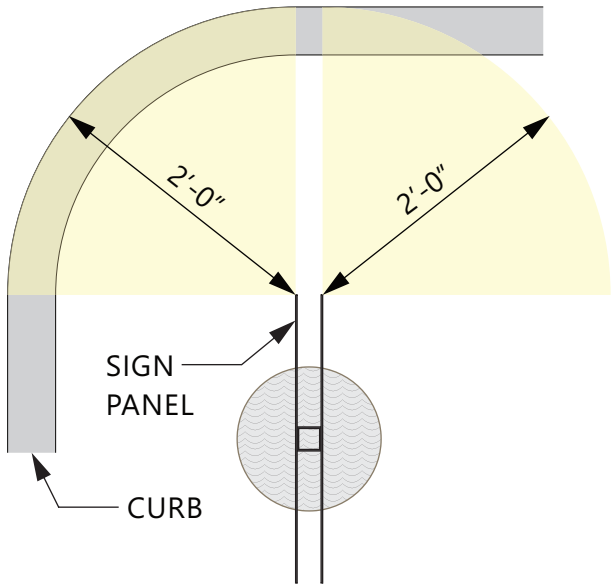
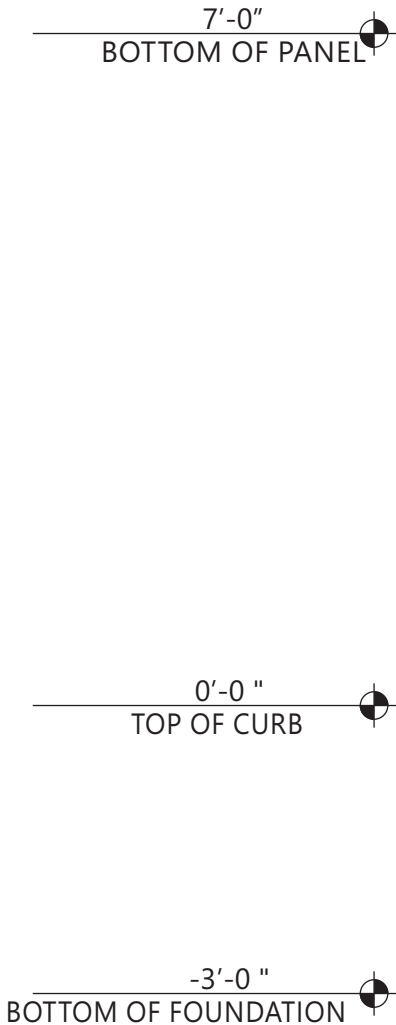
ELEVATION

SCALE - 1/2" = 1'- 0"



END VIEW

SCALE - 1/2" = 1'- 0"



PLAN VIEW

SCALE - 3/4" = 1'- 0"



5198 North Lake Drive  
Lake City, GA 30260  
404.361.3800  
www.claytonsigns.com

DOT REGULATORY TRAFFIC SIGNS

DRAWING FILE - CFA - LEE'S SUMMIT, MO (US 50 & SR 291) SIGNAGE.CDR

ALL ELECTRICAL  
SIGNS ARE  
120 VOLTS  
UNLESS  
OTHERWISE INDICATED

DRAWN BY Ben Holliday  
ACCOUNT REP. Ben Holliday  
DRAWING DATE July 27, 2023  
REVISION DATE May 7, 2025

STORE NUMBER	STORE ADDRESS
L05248	Chick-fil-A at Lee's Summit, MO (US 50 & SR 291) US Hwy 50 and MO State Route 291 Lee's Summit, MO 64081

THIS DRAWING IS AN ORIGINAL, UNPUBLISHED DESIGN CREATED BY CLAYTON SIGNS, INC. IT IS NOT TO BE REPRODUCED, CHANGED, OR EXHIBITED TO ANYONE OUTSIDE OF YOUR COMPANY IN WHOLE OR IN PART WITHOUT WRITTEN PERMISSION FROM THE OWNER OF CLAYTON SIGNS, INC. ANY SUCH ACTIONS MAY BE SUBJECT TO LEGAL ACTION IN A COURT OF LAW.  
©2023 ALL RIGHTS RESERVED

LOCATION  
M

SPECIFICATIONS

SIGN PANELS

PANELS ARE .080 ALUMINUM  
WITH REFLECTIVE BACKGROUND  
AND GRAPHICS.

SIGN POSTS

POSTS ARE 2" x 2" SQUARE  
ALUMINUM TUBING CAPPED ON TOP



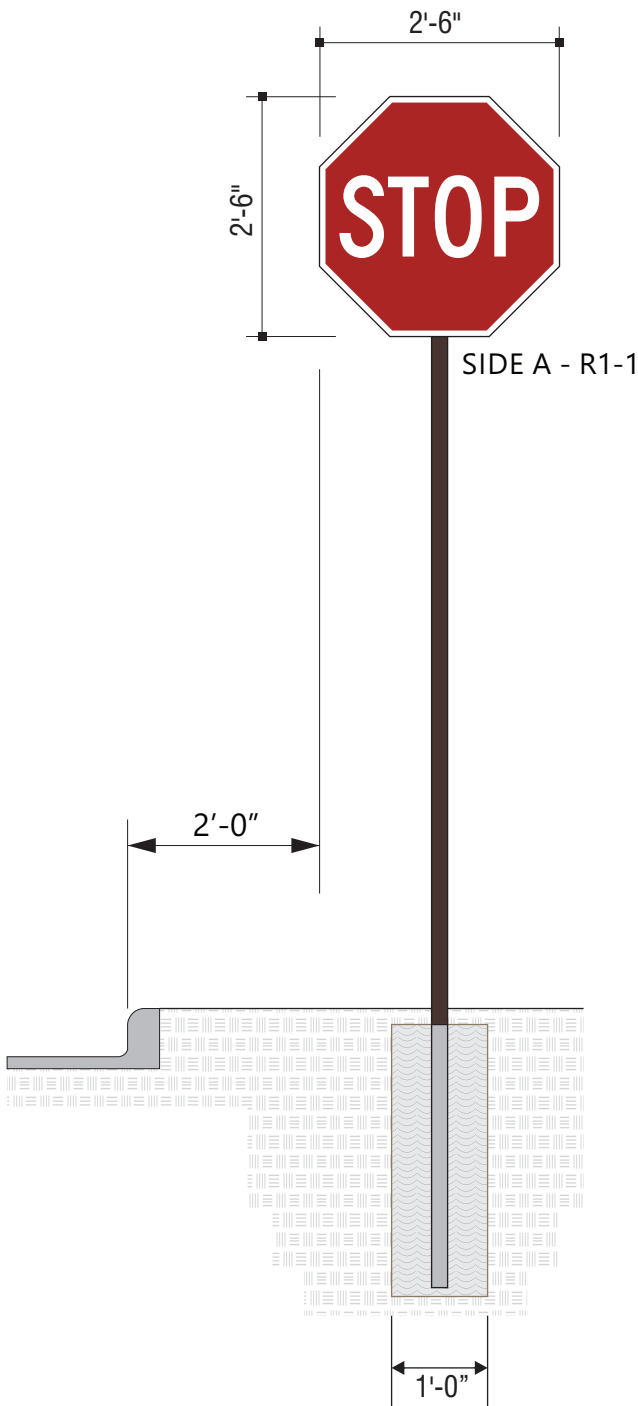
SIGN PANEL  
3M #680-82 REFLECTIVE RED.



SIGN PANEL  
3M #680-10 REFLECTIVE WHITE

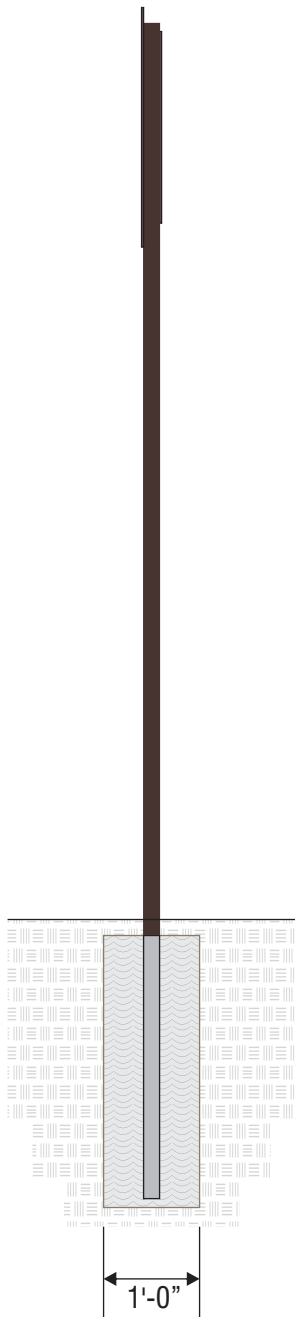


BACK OF SIGN PANEL AND POST  
MP 20181 DARK BRONZE  
SW #DDM460012



ELEVATION

SCALE - 1/2" = 1'- 0"

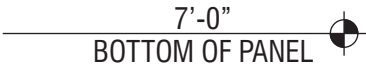


END VIEW

SCALE - 1/2" = 1'- 0"

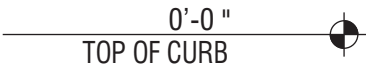


SIDE B - R5-1



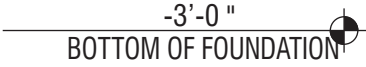
7'-0"

BOTTOM OF PANEL



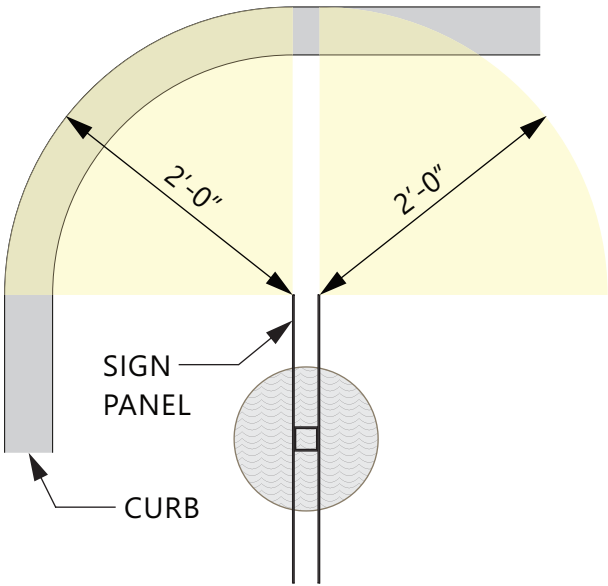
0'-0 "

TOP OF CURB



-3'-0 "

BOTTOM OF FOUNDATION



PLAN VIEW

SCALE - 3/4" = 1'- 0"



5198 North Lake Drive  
Lake City, GA 30260  
404.361.3800  
www.claytonsigns.com

DOT REGULATORY TRAFFIC SIGNS

DRAWING FILE - CFA - LEE'S SUMMIT, MO (US 50 & SR 291) SIGNAGE.CDR

ALL ELECTRICAL  
SIGNS ARE  
120 VOLTS  
UNLESS  
OTHERWISE INDICATED

DRAWN BY Ben Holliday  
ACCOUNT REP. Ben Holliday  
DRAWING DATE July 27, 2023  
REVISION DATE May 7, 2025

STORE NUMBER	STORE ADDRESS
L05248	Chick-fil-A at Lee's Summit, MO (US 50 & SR 291) US Hwy 50 and MO State Route 291 Lee's Summit, MO 64081

THIS DRAWING IS AN ORIGINAL, UNPUBLISHED DESIGN CREATED BY CLAYTON SIGNS, INC. IT IS NOT TO BE REPRODUCED, CHANGED, OR EXHIBITED TO ANYONE OUTSIDE OF YOUR COMPANY IN WHOLE OR IN PART WITHOUT WRITTEN PERMISSION FROM THE OWNER OF CLAYTON SIGNS, INC. ANY SUCH ACTIONS MAY BE SUBJECT TO LEGAL ACTION IN A COURT OF LAW.  
©2023 ALL RIGHTS RESERVED

LOCATION  
N

SPECIFICATIONS

SIGN PANELS

PANELS ARE .080 ALUMINUM  
WITH REFLECTIVE BACKGROUND  
AND GRAPHICS.

SIGN POSTS

POSTS ARE 2" x 2" SQUARE  
ALUMINUM TUBING CAPPED ON TOP



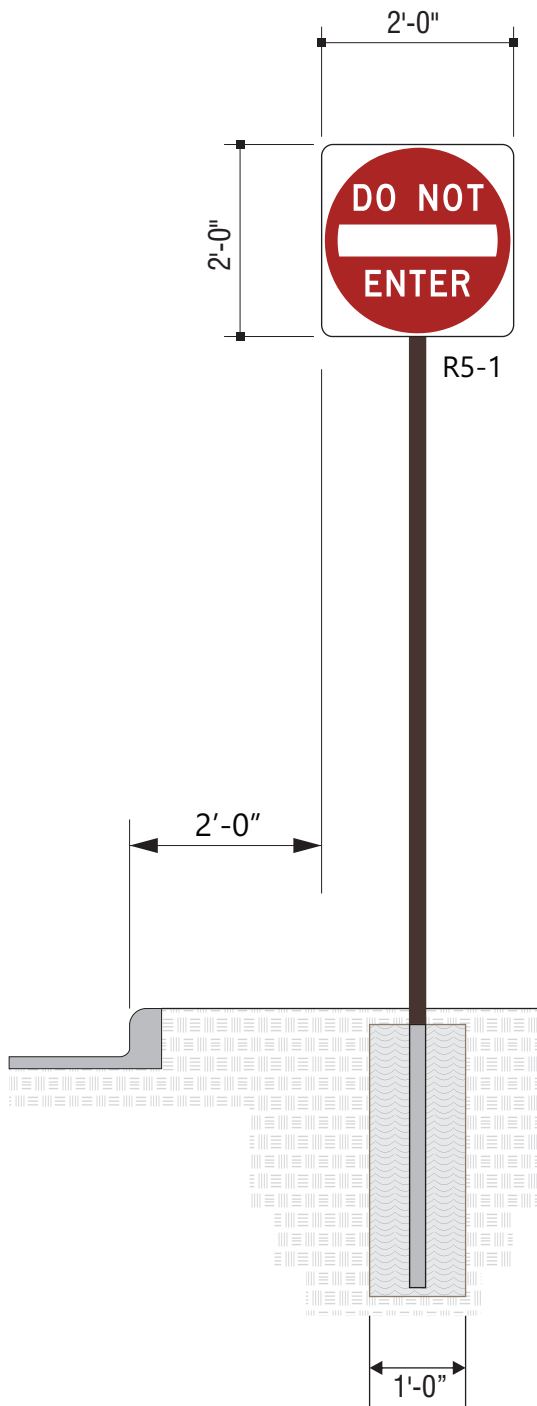
SIGN PANEL  
3M #680-82 REFLECTIVE RED.



SIGN PANEL  
3M #680-10 REFLECTIVE WHITE



BACK OF SIGN PANEL AND POST  
MP 20181 DARK BRONZE  
SW #DDM460012



ELEVATION

SCALE - 1/2" = 1'- 0"



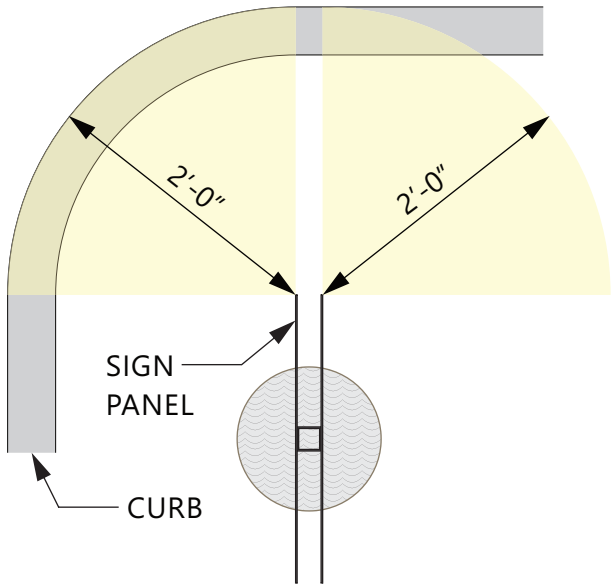
END VIEW

SCALE - 1/2" = 1'- 0"

7'-0"  
BOTTOM OF PANEL

0'-0 "  
TOP OF CURB

-3'-0 "  
BOTTOM OF FOUNDATION



PLAN VIEW

SCALE - 3/4" = 1'- 0"



5198 North Lake Drive  
Lake City, GA 30260  
404.361.3800  
www.claytonsigns.com

DOT REGULATORY TRAFFIC SIGNS

DRAWING FILE - CFA - LEE'S SUMMIT, MO (US 50 & SR 291) SIGNAGE.CDR

ALL ELECTRICAL  
SIGNS ARE  
120 VOLTS  
UNLESS  
OTHERWISE INDICATED

DRAWN BY Ben Holliday  
ACCOUNT REP. Ben Holliday  
DRAWING DATE July 27, 2023  
REVISION DATE May 7, 2025

STORE NUMBER  
**L05248**

STORE ADDRESS

Chick-fil-A at Lee's Summit, MO (US 50 & SR 291)  
US Hwy 50 and MO State Route 291  
Lee's Summit, MO 64081

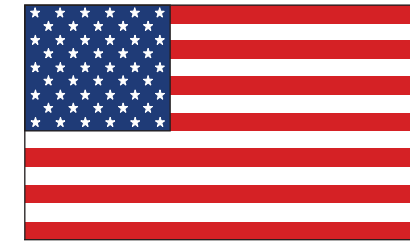
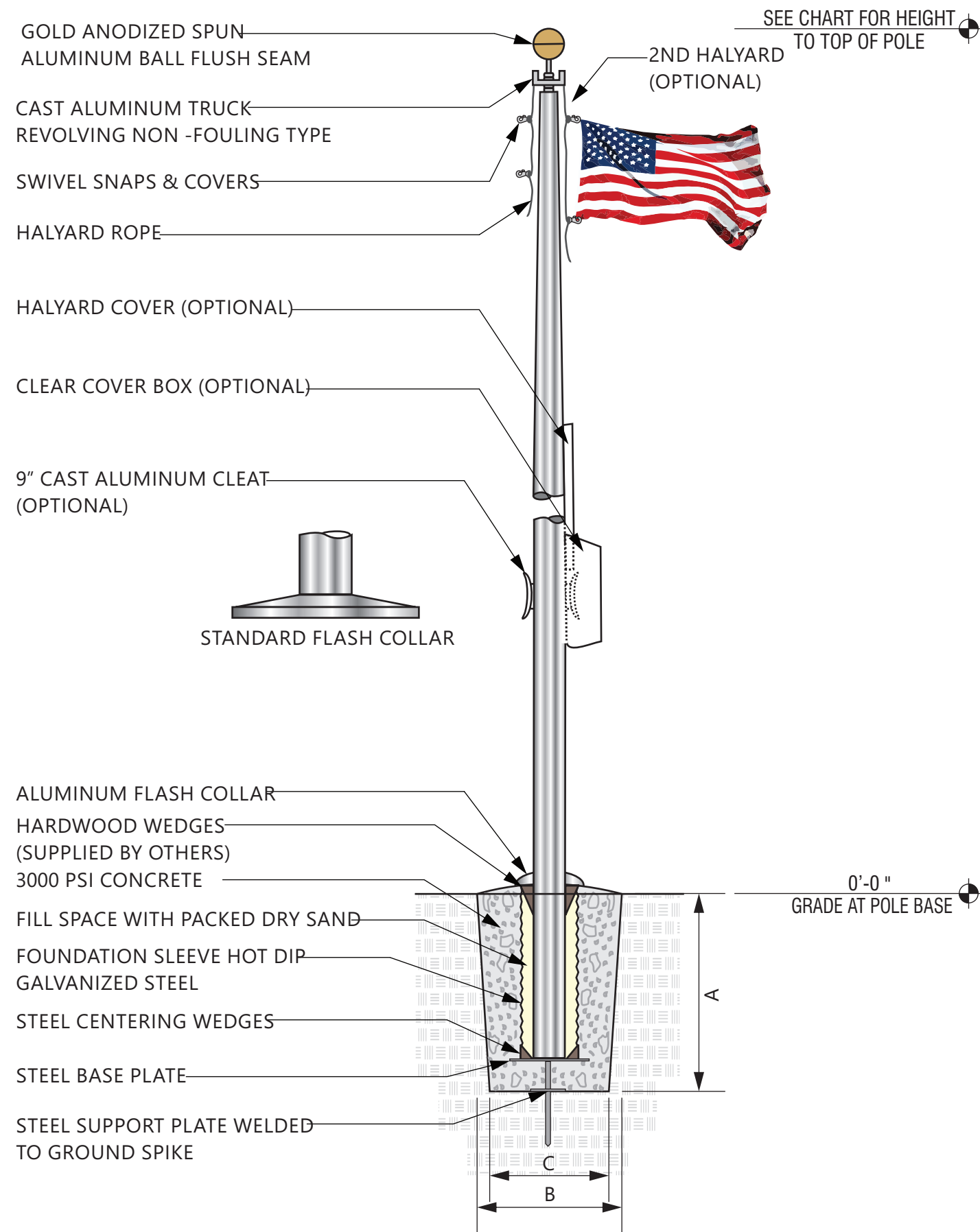
THIS DRAWING IS AN ORIGINAL, UNPUBLISHED DESIGN CREATED  
BY CLAYTON SIGNS, INC. IT IS NOT TO BE REPRODUCED,  
CHANGED, OR EXHIBITED TO ANYONE OUTSIDE OF YOUR  
COMPANY IN WHOLE OR IN PART WITHOUT WRITTEN PERMISSION  
FROM THE OWNER OF CLAYTON SIGNS, INC.. ANY SUCH ACTIONS  
MAY BE SUBJECT TO LEGAL ACTION IN A COURT OF LAW.

©2023 ALL RIGHTS RESERVED

LOCATION







### FLAG SIZES

POLE	A	B	MATERIAL
20'	3'0"	5'0"	POLYESTHER
25'	4'0"	6'0"	POLYESTHER
30'	5'0"	8'0"	POLYESTHER
35'	6'0"	10'0"	POLYESTHER
40'	8'0"	12'0"	POLYESTHER
45'	8'0"	12'0"	POLYESTHER
50'	12'0"	18'0"	POLYESTHER

### FOUNDATION SIZES

HEIGHT	A	B	C
20'	3'6"	30"	24"
25'	3'6"	30"	24"
30'	3'6"	30"	24"
35'	4'0"	36"	30"
40'	4'6"	42"	36"
45'	5'0"	48"	42"
50'	5'6"	48"	42"

GROUND SLEEVE AND CONCRETE INSTALLED  
BY THE GENERAL CONTRACTOR  
POLE INSTALLED ON PRE-INSTALLED GROUND  
SLEEVE BY SIGN CONTRACTOR



5198 North Lake Drive  
Lake City, GA 30260  
404.361.3800  
www.claytonsigns.com

### FLAG POLE

DRAWING FILE - CFA - LEE'S SUMMIT, MO (US 50 & SR 291) SIGNAGE.CDR

ALL ELECTRICAL  
SIGNS ARE  
120 VOLTS  
UNLESS  
OTHERWISE INDICATED

DRAWN BY Ben Holliday  
ACCOUNT REP. Ben Holliday  
DRAWING DATE July 27, 2023  
REVISION DATE May 7, 2025

STORE NUMBER	STORE ADDRESS
L05248	Chick-fil-A at Lee's Summit, MO (US 50 & SR 291) US Hwy 50 and MO State Route 291 Lee's Summit, MO 64081

THIS DRAWING IS AN ORIGINAL, UNPUBLISHED DESIGN CREATED BY CLAYTON SIGNS, INC. IT IS NOT TO BE REPRODUCED, CHANGED, OR EXHIBITED TO ANYONE OUTSIDE OF YOUR COMPANY IN WHOLE OR IN PART WITHOUT WRITTEN PERMISSION FROM THE OWNER OF CLAYTON SIGNS, INC. ANY SUCH ACTIONS MAY BE SUBJECT TO LEGAL ACTION IN A COURT OF LAW.  
©2023 ALL RIGHTS RESERVED

LOCATION  
FP

SPECIFICATIONS

CLEARANCE BAR

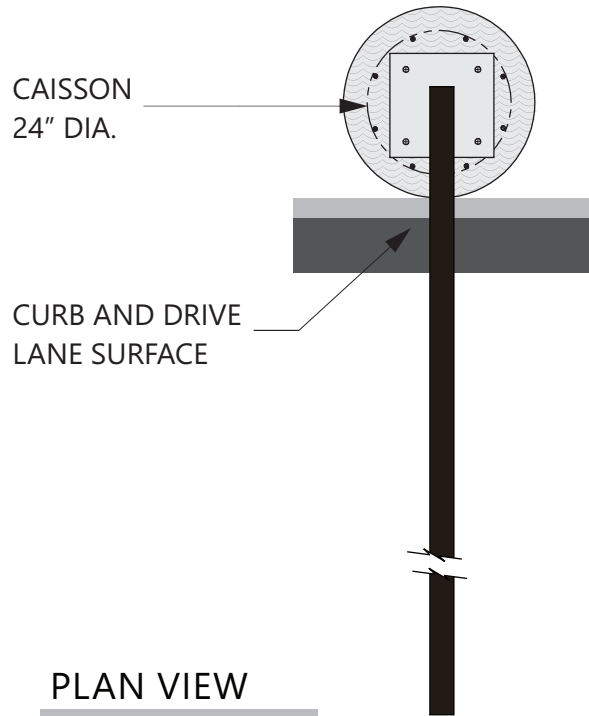
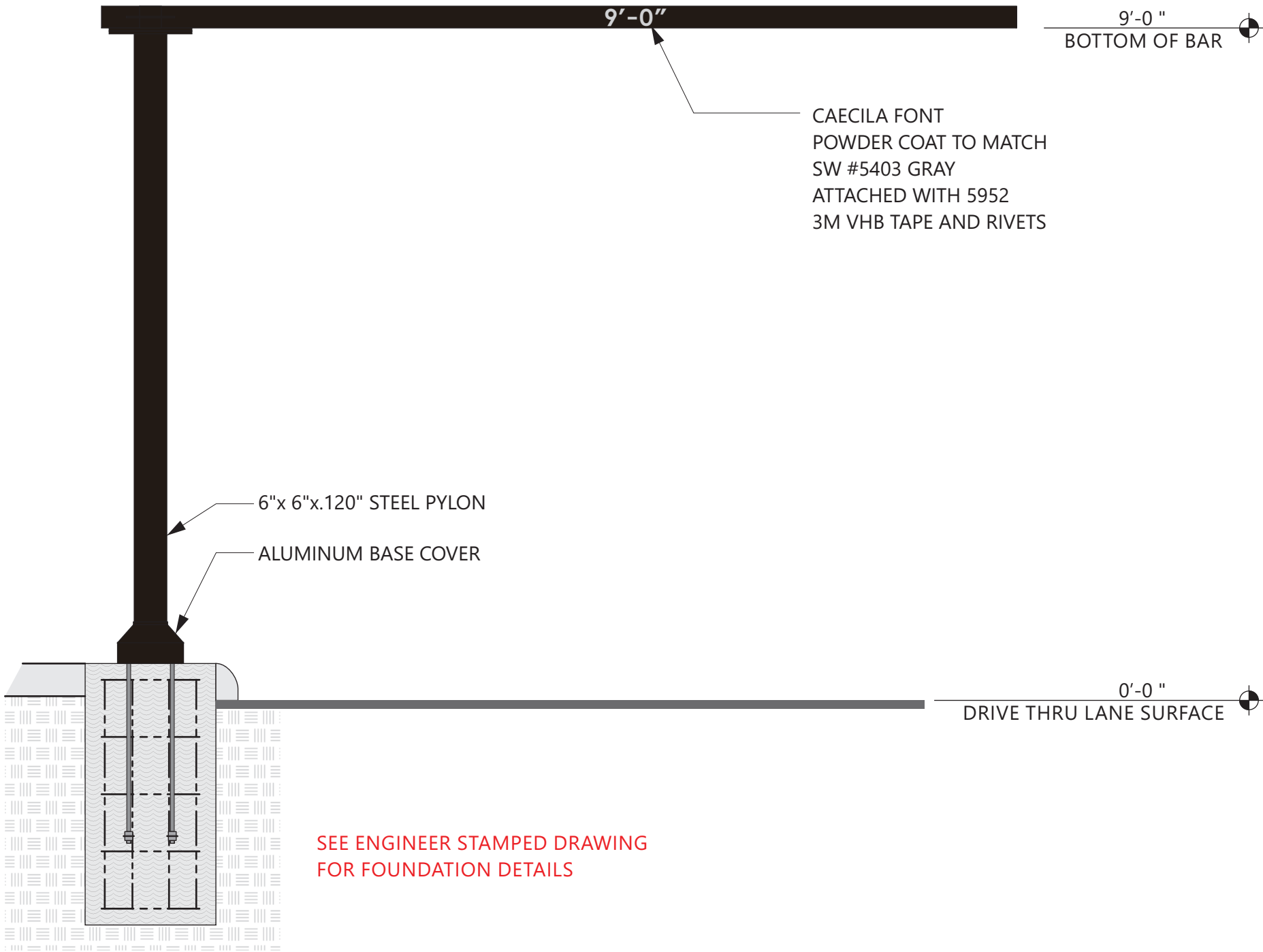
COLORS



MATTE BLACK TEXTURED



SHERWIN WILLIAMS  
SW 5403 GRAY



PLAN VIEW

SCALE - 1/2" = 1'- 0"



5198 North Lake Drive  
Lake City, GA 30260  
404.361.3800  
www.claytonsigns.com

DRIVE-THRU  
CLEARANCE BAR

DRAWING FILE - CFA - LEE'S SUMMIT, MO (US 50 & SR 291) SIGNAGE.CDR

ALL ELECTRICAL  
SIGNS ARE  
120 VOLTS  
UNLESS  
OTHERWISE INDICATED

DRAWN BY Ben Holliday  
ACCOUNT REP. Ben Holliday  
DRAWING DATE July 27, 2023  
REVISION DATE May 7, 2025

STORE NUMBER

L05248

STORE ADDRESS

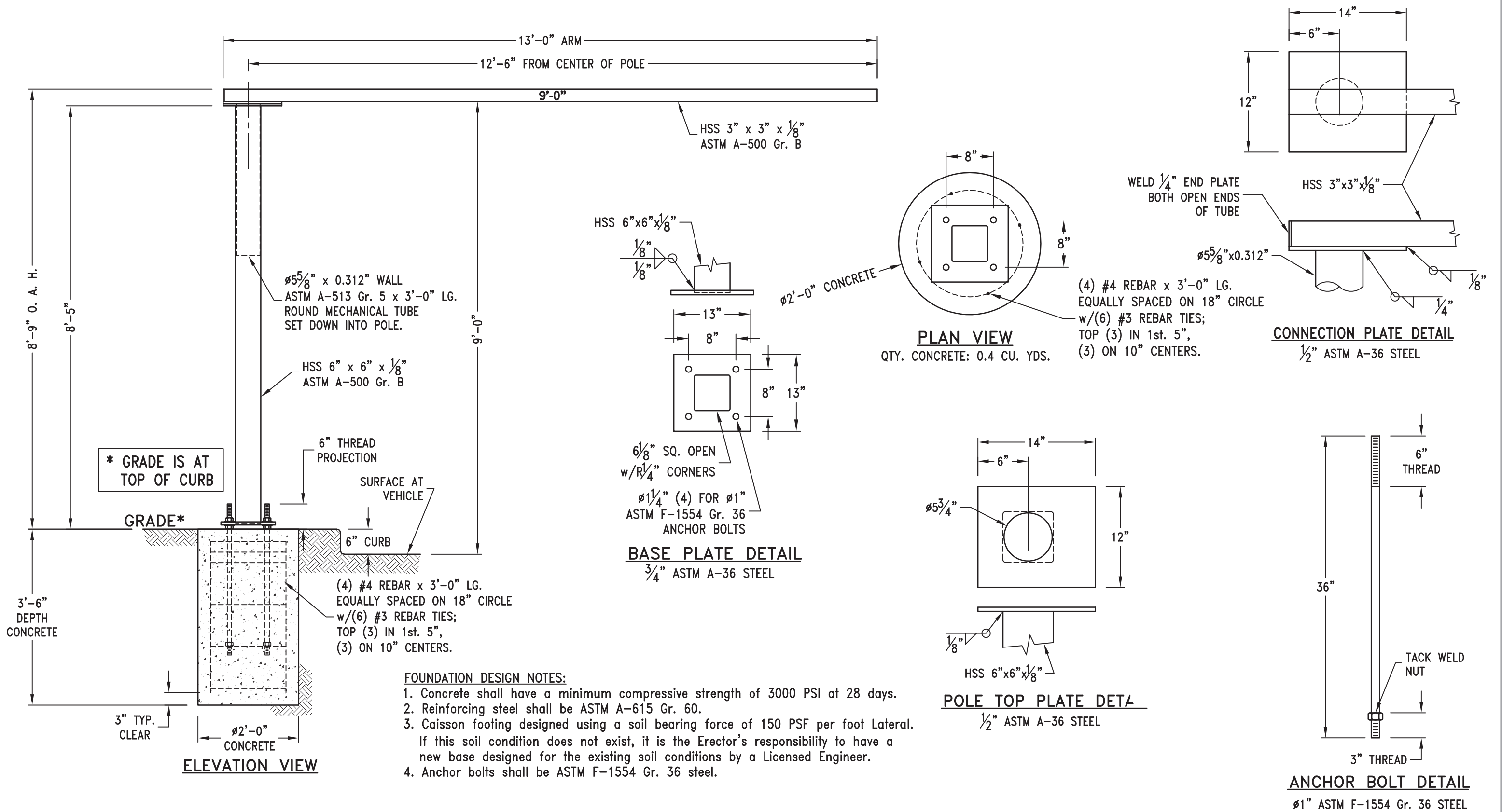
Chick-fil-A at Lee's Summit, MO (US 50 & SR 291)  
US Hwy 50 and MO State Route 291  
Lee's Summit, MO 64081

THIS DRAWING IS AN ORIGINAL, UNPUBLISHED DESIGN CREATED BY CLAYTON SIGNS, INC. IT IS NOT TO BE REPRODUCED, CHANGED, OR EXHIBITED TO ANYONE OUTSIDE OF YOUR COMPANY IN WHOLE OR IN PART WITHOUT WRITTEN PERMISSION FROM THE OWNER OF CLAYTON SIGNS, INC. ANY SUCH ACTIONS MAY BE SUBJECT TO LEGAL ACTION IN A COURT OF LAW.

©2023 ALL RIGHTS RESERVED

LOCATION

CB-1



5198 North Lake Drive  
Lake City, GA 30260  
404.361.3800  
www.claytonsigns.com

### DRIVE-THRU CLEARANCE BAR

DRAWING FILE - CFA - LEE'S SUMMIT, MO (US 50 & SR 291) SIGNAGE.CDR

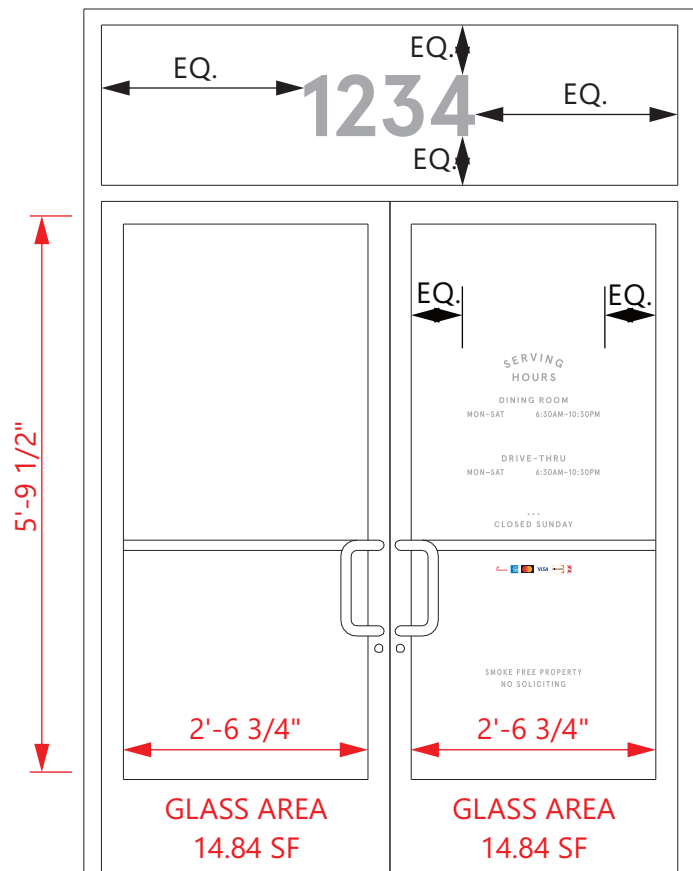
ALL ELECTRICAL SIGNS ARE 120 VOLTS UNLESS OTHERWISE INDICATED	DRAWN BY Ben Holliday
	ACCOUNT REP. Ben Holliday
	DRAWING DATE July 27, 2023
	REVISION DATE May 7, 2025

STORE NUMBER	STORE ADDRESS
L05248	Chick-fil-A at Lee's Summit, MO (US 50 & SR 291) US Hwy 50 and MO State Route 291 Lee's Summit, MO 64081

THIS DRAWING IS AN ORIGINAL, UNPUBLISHED DESIGN CREATED BY CLAYTON SIGNS, INC. IT IS NOT TO BE REPRODUCED, CHANGED, OR EXHIBITED TO ANYONE OUTSIDE OF YOUR COMPANY IN WHOLE OR IN PART WITHOUT WRITTEN PERMISSION FROM THE OWNER OF CLAYTON SIGNS, INC. ANY SUCH ACTIONS MAY BE SUBJECT TO LEGAL ACTION IN A COURT OF LAW.  
©2023 ALL RIGHTS RESERVED

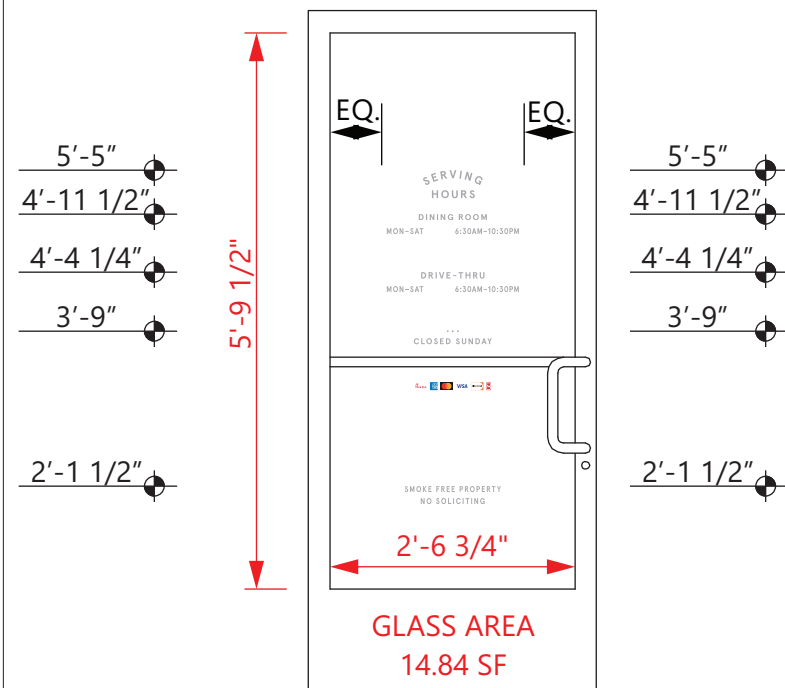
LOCATION  
CB-1





ELEVATION  
SCALE - 1/2" = 1'- 0"

DOOR WINDOW AREA - 14.84 SF  
WINDOW GRAPHIC AREA - 0.662 SF



ELEVATION  
SCALE - 1/2" = 1'- 0"



3.50" x 7.40" = 0.18 SF

0.75" x 8.50" = 0.04 SF  
0.75" x 16.50" = 0.09 SF

0.75" x 7.90" = 0.04 SF  
0.75" x 16.50" = 0.09 SF

0.25" x 1.47" = 0.002 SF  
0.75" x 9.75" = 0.05 SF

1.00" x 9.45" = 0.07 SF

0.75" x 12.00" = 0.06 SF  
0.75" x 8.00" = 0.04 SF

0.662 SF TOTAL GRAPHIC AREA

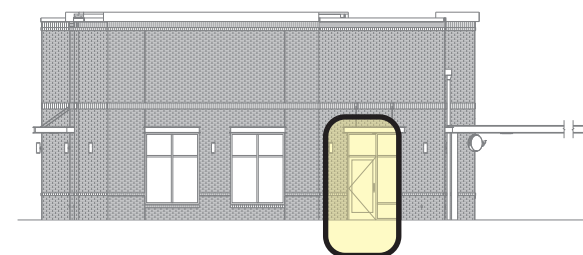
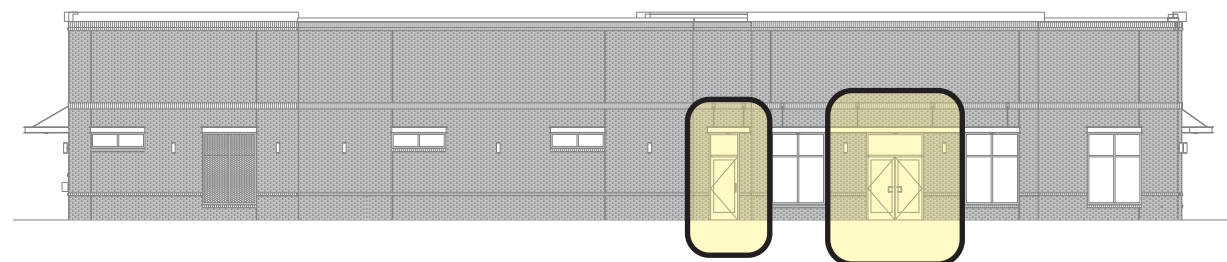
LETTERING IS 3M #7725-10 OPAQUE WHITE VINYL FILM (SHOWN IN GREY FOR ILLUSTRATION)  
CREDIT CARD LOGOS ARE INDIVIDUAL PRINTED DECALS ON CLEAR FILM.  
ALL GRAPHICS ARE APPLIED TO EXTERIOR SURFACE OF GLASS.  
STORE HOURS MAY BE DIFFERENT PER STORE.  
SUNDAY HAS RED VINYL FILM STRIKE THROUGH ON IT.  
PROVIDE EXTRA 6:00 PER EACH SET.

8" 1234

8" TALL ADDRESS NUMBERS ARE 3M #7725-10 OPAQUE WHITE VINYL FILM APPLIED TO EXTERIOR SURFACE OF GLASS. (SHOWN IN GREY FOR ILLUSTRATION)  
APERCU BOLD FONT

VERIFY ADDRESS BEFORE MAKING NUMBERS

ELEVATION  
NOT TO SCALE



5198 North Lake Drive  
Lake City, GA 30260  
404.361.3800  
www.claytonsigns.com

## WINDOW GRAPHICS

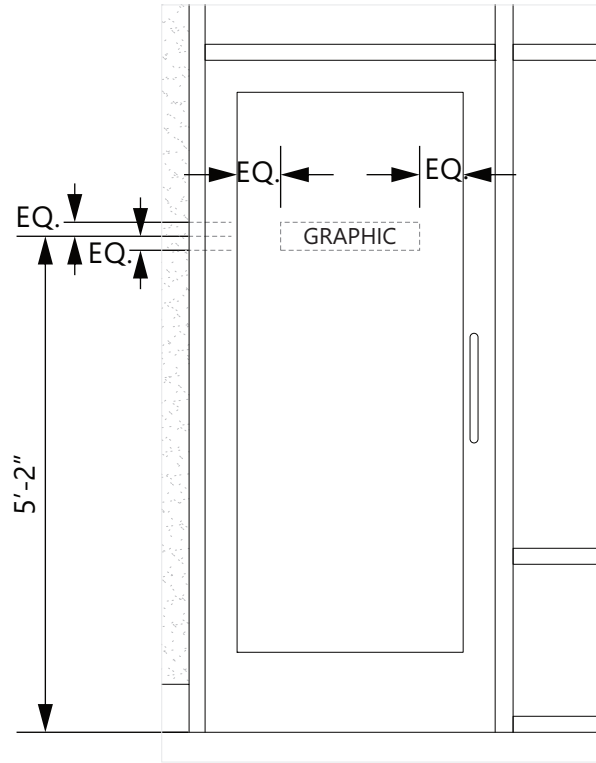
DRAWING FILE - CFA - LEE'S SUMMIT, MO (US 50 & SR 291) SIGNAGE.CDR

ALL ELECTRICAL  
SIGNS ARE  
120 VOLTS  
UNLESS  
OTHERWISE INDICATED

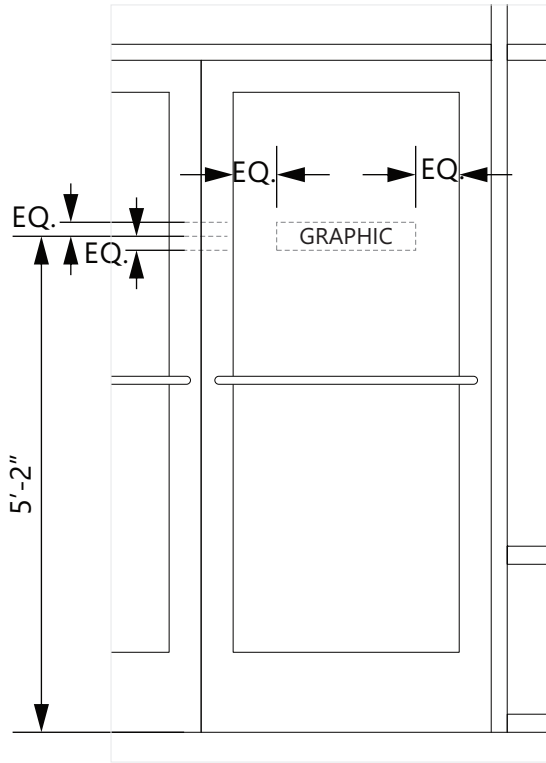
DRAWN BY Ben Holliday  
ACCOUNT REP. Ben Holliday  
DRAWING DATE July 27, 2023  
REVISION DATE May 7, 2025

STORE NUMBER	STORE ADDRESS
L05248	Chick-fil-A at Lee's Summit, MO (US 50 & SR 291) US Hwy 50 and MO State Route 291 Lee's Summit, MO 64081

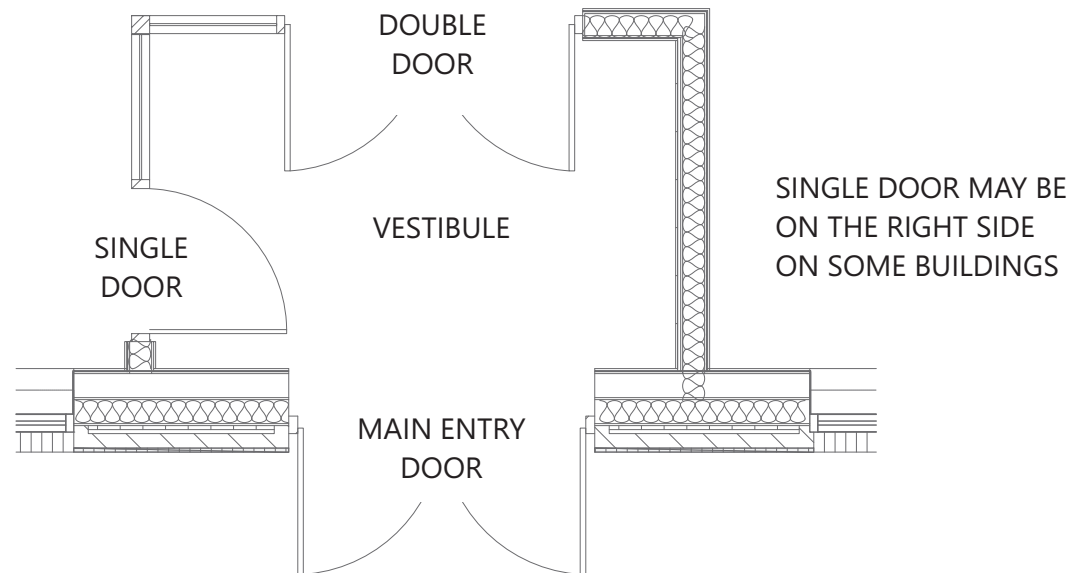
THIS DRAWING IS AN ORIGINAL, UNPUBLISHED DESIGN CREATED BY CLAYTON SIGNS, INC. IT IS NOT TO BE REPRODUCED, CHANGED, OR EXHIBITED TO ANYONE OUTSIDE OF YOUR COMPANY IN WHOLE OR IN PART WITHOUT WRITTEN PERMISSION FROM THE OWNER OF CLAYTON SIGNS, INC. ANY SUCH ACTIONS MAY BE SUBJECT TO LEGAL ACTION IN A COURT OF LAW.  
©2023 ALL RIGHTS RESERVED



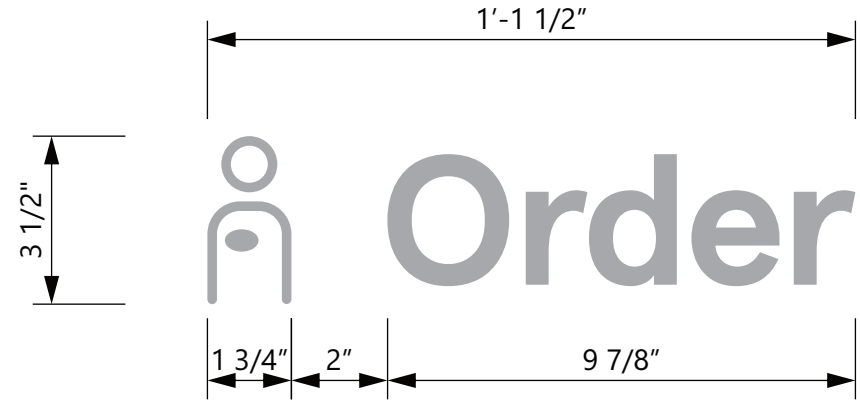
SINGLE DOOR ELEVATION  
SCALE - 1/2" = 1'- 0"



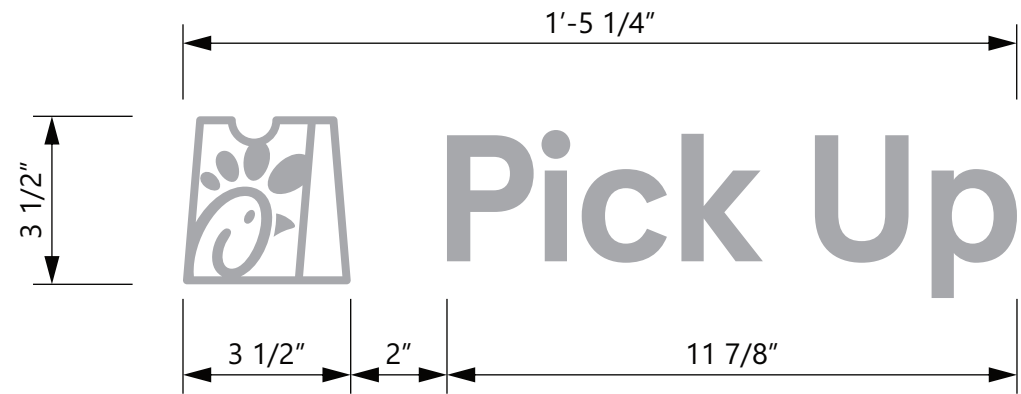
DOUBLE DOOR ELEVATION  
SCALE - 1/2" = 1'- 0"



VESIBULE PLAN VIEW  
SCALE - 1/2" = 1'- 0"



DOUBLE DOOR GRAPHICS  
SCALE - 3" = 1'- 0"



SINGLE DOOR GRAPHICS  
SCALE - 3" = 1'- 0"

LETTERING IS 3M #7725-10 OPAQUE WHITE VINYL FILM  
(GRAPHICS SHOWN IN GREY FOR ILLUSTRATION)  
ALL GRAPHICS ARE APPLIED TO EXTERIOR SURFACE OF GLASS.



5198 North Lake Drive  
Lake City, GA 30260  
404.361.3800  
www.claytonsigns.com

## INTERIOR VESTIBULE DOOR GRAPHICS

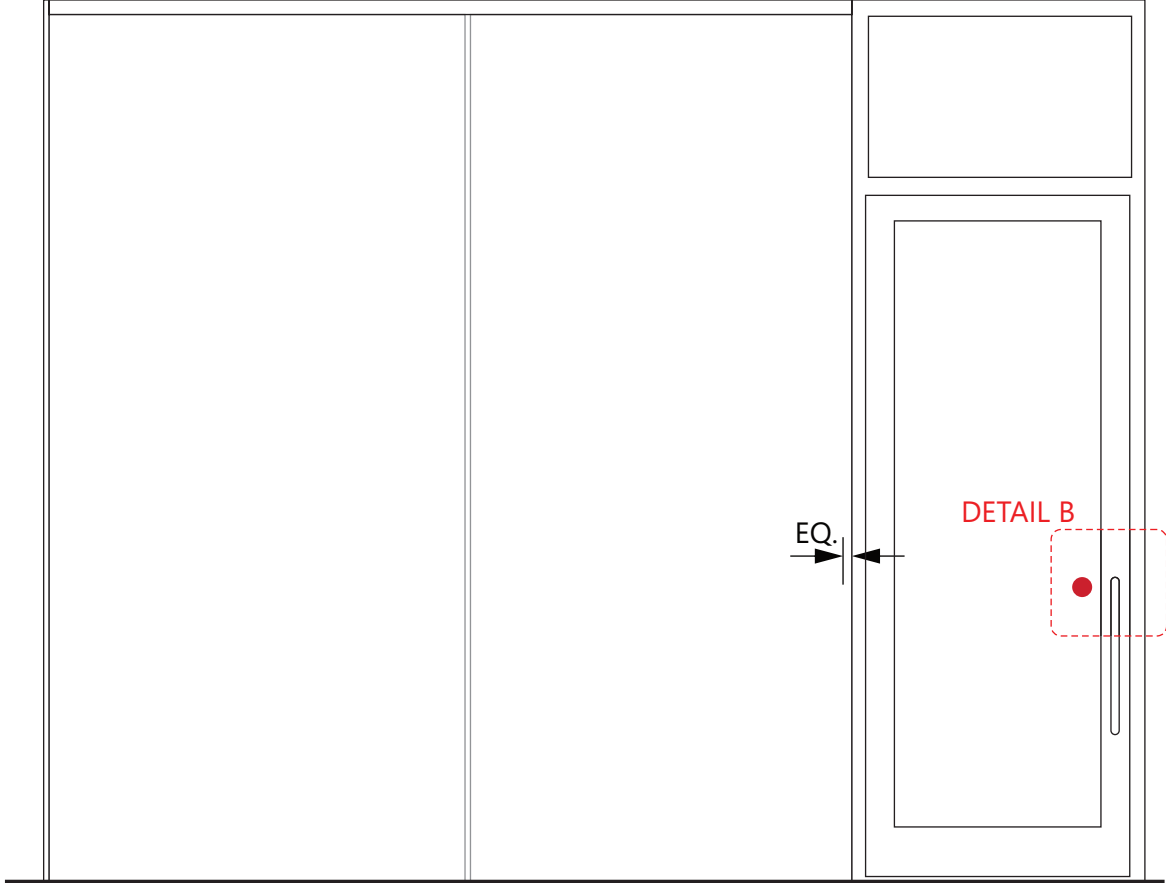
DRAWING FILE - CFA - LEE'S SUMMIT, MO (US 50 & SR 291) SIGNAGE.CDR

ALL ELECTRICAL  
SIGNS ARE  
120 VOLTS  
UNLESS  
OTHERWISE INDICATED

DRAWN BY Ben Holliday  
ACCOUNT REP. Ben Holliday  
DRAWING DATE July 27, 2023  
REVISION DATE May 7, 2025

STORE NUMBER	STORE ADDRESS
L05248	Chick-fil-A at Lee's Summit, MO (US 50 & SR 291) US Hwy 50 and MO State Route 291 Lee's Summit, MO 64081

THIS DRAWING IS AN ORIGINAL, UNPUBLISHED DESIGN CREATED BY CLAYTON SIGNS, INC. IT IS NOT TO BE REPRODUCED, CHANGED, OR EXHIBITED TO ANYONE OUTSIDE OF YOUR COMPANY IN WHOLE OR IN PART WITHOUT WRITTEN PERMISSION FROM THE OWNER OF CLAYTON SIGNS, INC. ANY SUCH ACTIONS MAY BE SUBJECT TO LEGAL ACTION IN A COURT OF LAW.  
©2023 ALL RIGHTS RESERVED



PLAYGROUND ENTRY ELEVATION

SCALE - 1/2" = 1'- 0"

ONE EACH REQUIRED - MANUFACTURE AND INSTALL DIGITALLY PRINTED GRAPHICS.  
FONT = APERCU BOLD  
APPLIED FIRST SURFACE TO DOOR AS REQUIRED PER DOOR CONDITION. EACH TO ALIGN WITH EACH OTHER ON OPPOSITE SI DES OF DOOR.  
DECAL IS DIGITALLY PRINTED ON 3M 7725-10 WHITE VINYL AND LAMINATED WITH AVERY DOL 136OZ MATTE LAMINATE.  
SINGLE-SIDED PRINT - TWO DECALS (1 "PUSH, 1"PULL") AND APPLIED BACK-TO BACK ON DOOR GLASS

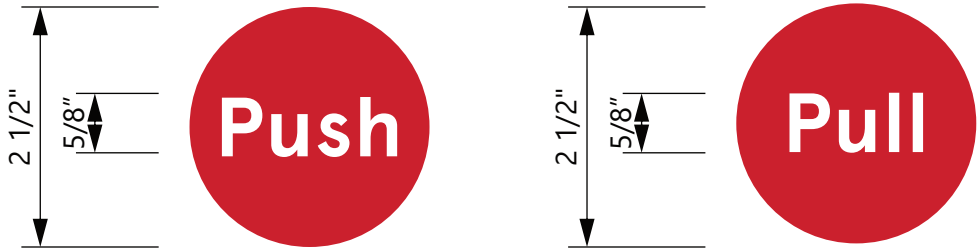
COLORS



PANTONE 186C

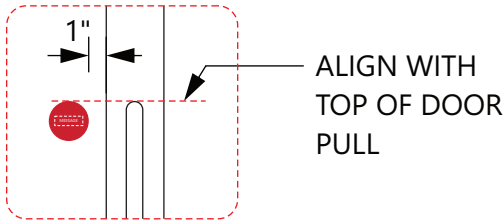


WHITE



ELEVATION

SCALE - 6" = 1'- 0"



DETAIL B ELEVATION

SCALE - 1" = 1'- 0"



5198 North Lake Drive  
Lake City, GA 30260  
404.361.3800  
www.claytonsigns.com

INTERIOR PLAYGROUND GRAPHICS

DRAWING FILE - CFA - LEE'S SUMMIT, MO (US 50 & SR 291) SIGNAGE.CDR

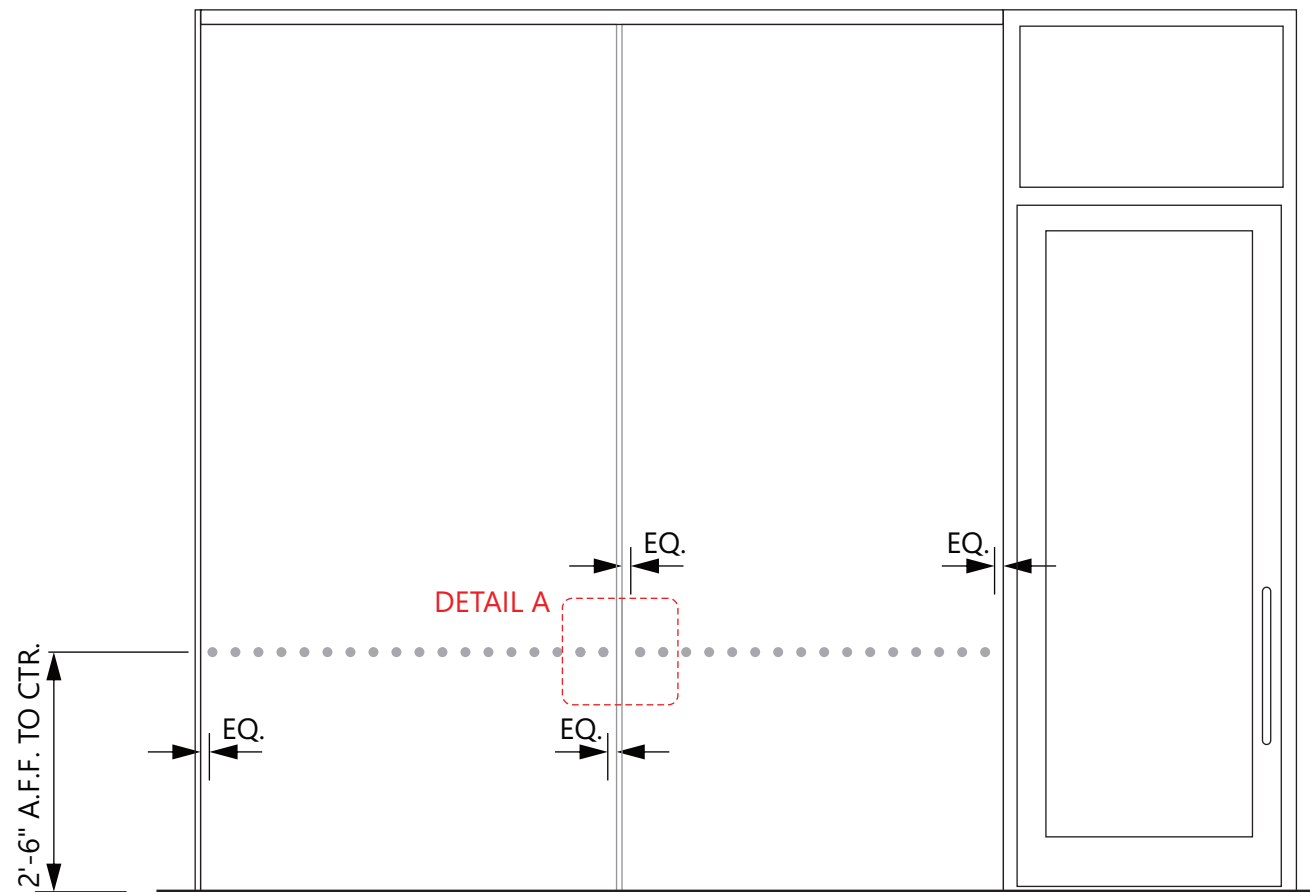
ALL ELECTRICAL  
SIGNS ARE  
120 VOLTS  
UNLESS  
OTHERWISE INDICATED

DRAWN BY Ben Holliday  
ACCOUNT REP. Ben Holliday  
DRAWING DATE July 27, 2023  
REVISION DATE May 7, 2025

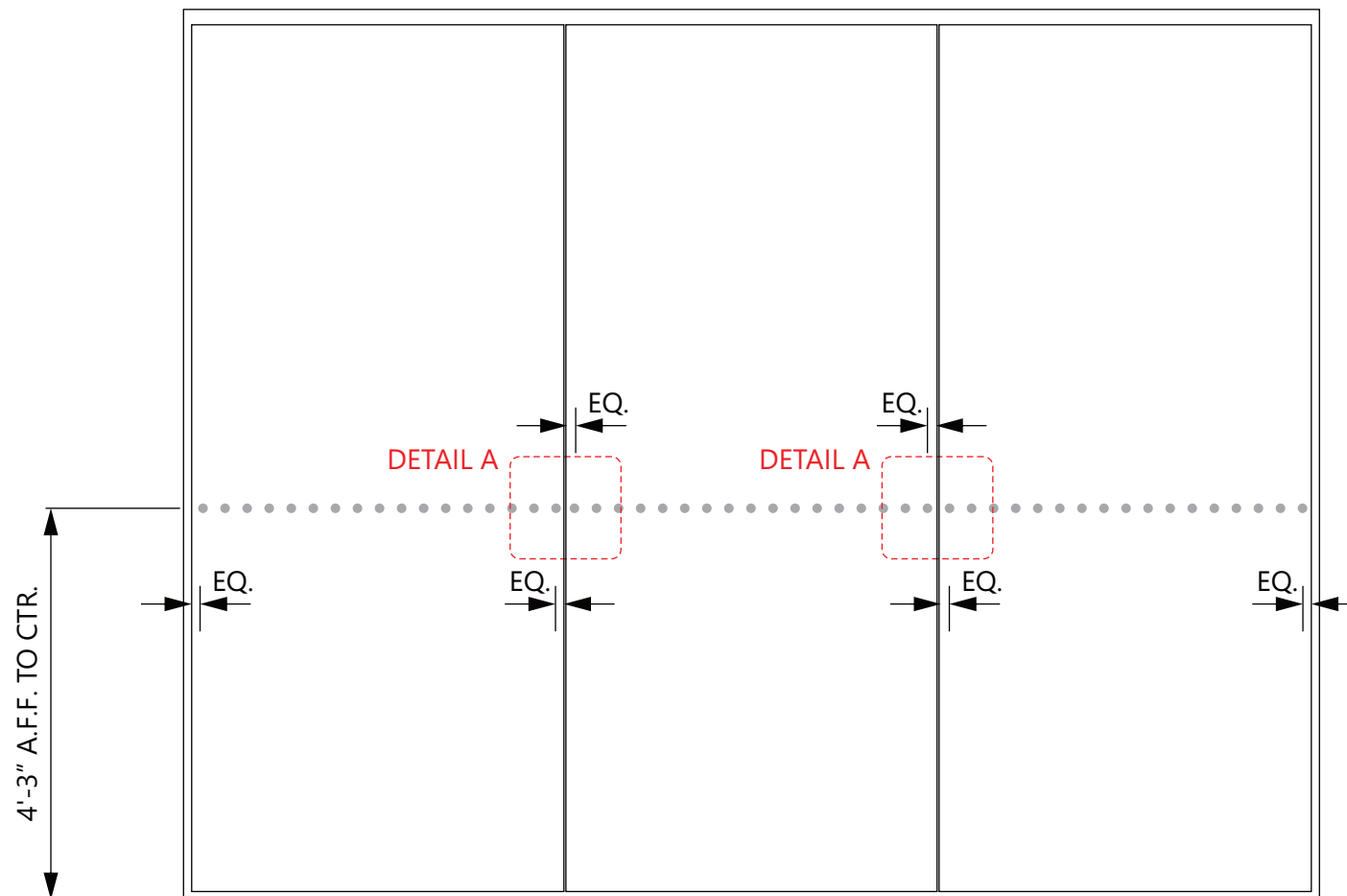
STORE NUMBER	STORE ADDRESS
L05248	Chick-fil-A at Lee's Summit, MO (US 50 & SR 291) US Hwy 50 and MO State Route 291 Lee's Summit, MO 64081

THIS DRAWING IS AN ORIGINAL, UNPUBLISHED DESIGN CREATED BY CLAYTON SIGNS, INC. IT IS NOT TO BE REPRODUCED, CHANGED, OR EXHIBITED TO ANYONE OUTSIDE OF YOUR COMPANY IN WHOLE OR IN PART WITHOUT WRITTEN PERMISSION FROM THE OWNER OF CLAYTON SIGNS, INC. ANY SUCH ACTIONS MAY BE SUBJECT TO LEGAL ACTION IN A COURT OF LAW.  
©2023 ALL RIGHTS RESERVED



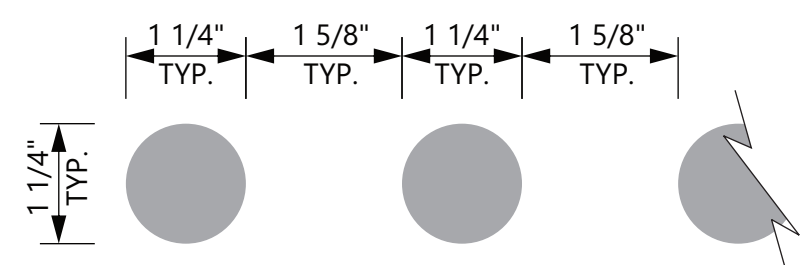


PLAYGROUND ENTRY ELEVATION  
SCALE - 1/2" = 1'- 0"



SIDE WALL ELEVATION  
SCALE - 1/2" = 1'- 0"

VINYL FILM GRAPHICS APPLIED TO FIRST SURFACE OF GLASS  
CONSISTS OF MULTIPLE DOTS IN A SERIES TO COVER WINDOWS  
NEXT TO ENTRANCE TO THE PLAYGROUND. WINDOWS MAY BE ON LEFT  
OR RIGHT SIDE OF ENTRANCE IN DIFFERENT BUILDINGS. SOME BUILDINGS MAY  
HAVE LESS GLASS PANELS

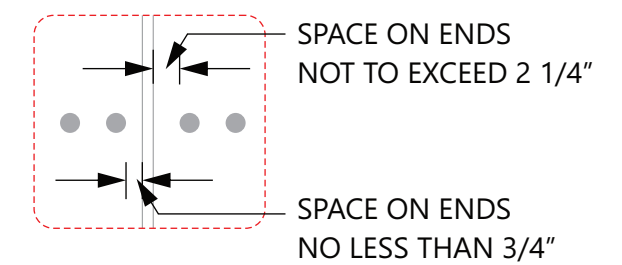


ELEVATION  
SCALE - 6" = 1'- 0"

COLOR



3M 7725-10 WHITE  
VINYL FILM  
SHOWN IN GREY  
FOR ILLUSTRATIVE  
PURPOSES



DETAIL A ELEVATION  
SCALE - 1" = 1'- 0"



5198 North Lake Drive  
Lake City, GA 30260  
404.361.3800  
www.claytonsigns.com

INTERIOR PLAYGROUND GRAPHICS

DRAWING FILE - CFA - LEE'S SUMMIT, MO (US 50 & SR 291) SIGNAGE.CDR

ALL ELECTRICAL  
SIGNS ARE  
120 VOLTS  
UNLESS  
OTHERWISE INDICATED

DRAWN BY Ben Holliday  
ACCOUNT REP. Ben Holliday  
DRAWING DATE July 27, 2023  
REVISION DATE May 7, 2025

STORE NUMBER	STORE ADDRESS
L05248	Chick-fil-A at Lee's Summit, MO (US 50 & SR 291) US Hwy 50 and MO State Route 291 Lee's Summit, MO 64081

THIS DRAWING IS AN ORIGINAL, UNPUBLISHED DESIGN CREATED  
BY CLAYTON SIGNS, INC. IT IS NOT TO BE REPRODUCED,  
CHANGED, OR EXHIBITED TO ANYONE OUTSIDE OF YOUR  
COMPANY IN WHOLE OR IN PART WITHOUT WRITTEN PERMISSION  
FROM THE OWNER OF CLAYTON SIGNS, INC. ANY SUCH ACTIONS  
MAY BE SUBJECT TO LEGAL ACTION IN A COURT OF LAW.

©2023 ALL RIGHTS RESERVED

## REVISION HISTORY

[illegible]

5198 North Lake Drive  
Lake City, GA 30260  
404.361.3800  
[www.claytonsigns.com](http://www.claytonsigns.com)

## REVISION HISTORY

DRAWING FILE - CFA - LEE'S SUMMIT, MO (US 50 &amp; SR 291) SIGNAGE.CDR

ALL ELECTRICAL  
SIGNS ARE  
120 VOLTS  
UNLESS  
OTHERWISE INDICATED

DRAWN BY	Ben Holliday
ACCOUNT REP.	Ben Holliday
DRAWING DATE	July 27, 2023
REVISION DATE	May 7, 2025

STORE NUMBER

**L05248**

STORE ADDRESS

Chick-fil-A at Lee's Summit, MO (US 50 & SR 291)  
US Hwy 50 and MO State Route 291  
Lee's Summit, MO 64081

THIS DRAWING IS AN ORIGINAL, UNPUBLISHED DESIGN CREATED BY CLAYTON SIGNS, INC. IT IS NOT TO BE REPRODUCED, CHANGED, OR EXHIBITED TO ANYONE OUTSIDE OF YOUR COMPANY IN WHOLE OR IN PART WITHOUT WRITTEN PERMISSION FROM THE OWNER OF CLAYTON SIGNS, INC.. ANY SUCH ACTIONS MAY BE SUBJECT TO LEGAL ACTION IN A COURT OF LAW.

©2023 ALL RIGHTS RESERVED