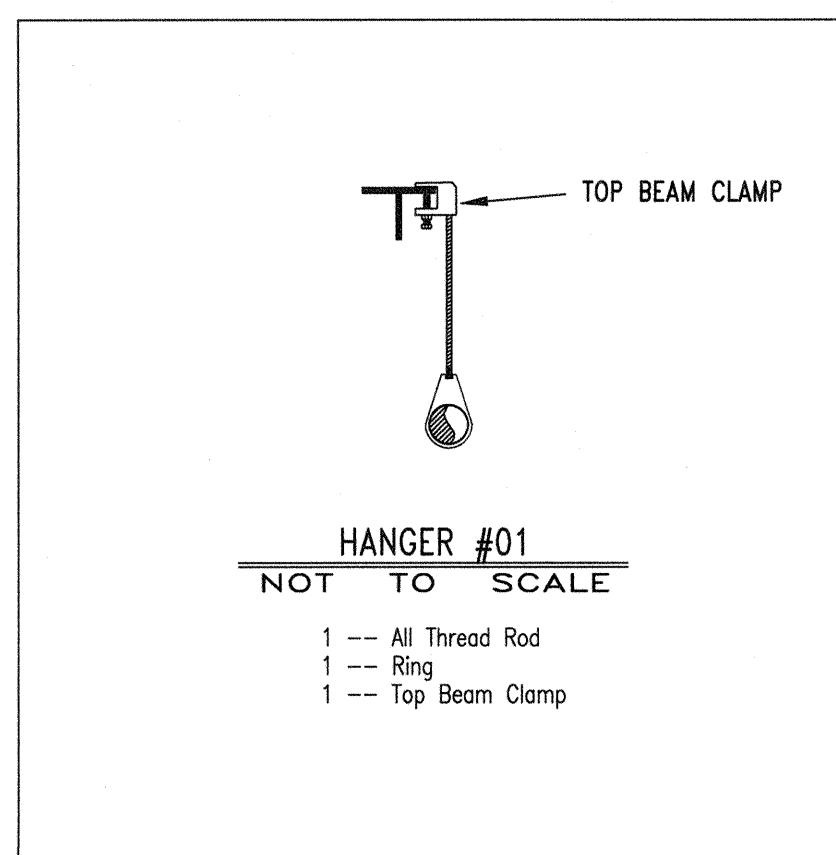


SITE PLAN- N.T.S.

GENERAL NOTES

- THE SYSTEM DESIGN CRITERIA COMPLIES WITH THE REQUIREMENTS OF NFPA 13 2016 EDITION.
- ALL PIPING SHALL CONFORM WITH THE REQUIREMENTS OF NFPA 13 2016 EDITION.
- ALL FITTINGS SHALL CONFORM WITH THE REQUIREMENTS OF NFPA 13 2016 EDITION.
- ALL HANGERS SHALL CONFORM TO THE REQUIREMENTS OF NFPA 13 2016 EDITION.
- FITTINGS FOR 1" THRU 2" SHALL BE CAST IRON THREADED. FITTINGS FOR 2 1/2" THRU 4" PIPING ARE TO BE GROOVED OR WELDED OUTLETS.
- LENGTHS OF PIPING 1" THRU 2" ARE SHOWN AS THREAD TO THREAD UNLESS NOTED AS: G - GROOVE, U - WELD, F - FACE OR FLANGE OR T - THREAD.
- ALL SECTIONS OF TRAPPED PIPING SHALL HAVE AUXILIARY DRAINS WHERE REQUIRED.
- THE OWNER SHALL BE RESPONSIBLE FOR PROVIDING ADEQUATE HEAT TO PREVENT THE PIPING FROM FREEZING.
- ALL SWITCHBOARDS, PANEL BOARDS, DISTRIBUTION BOARDS AND MOTOR CONTROL CENTERS SHALL BE PROTECTED FROM DAMAGE BY OTHERS.



HANGER SPACING TABLE

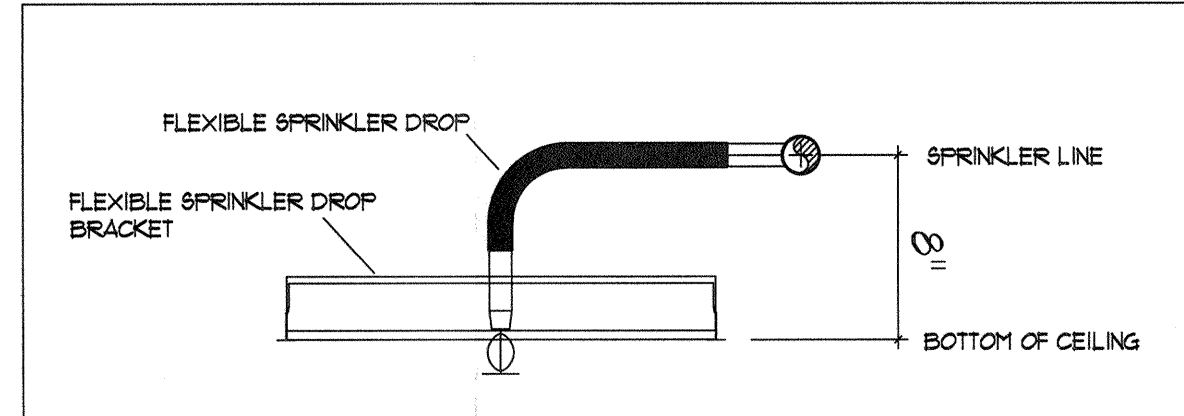
HANGER SPACING FOR STEEL PIPE (SCH. 40)

PIPE SIZE	HANGER SPACING
1", 1 1/4"	12'
1 1/2" & LARGER	15'

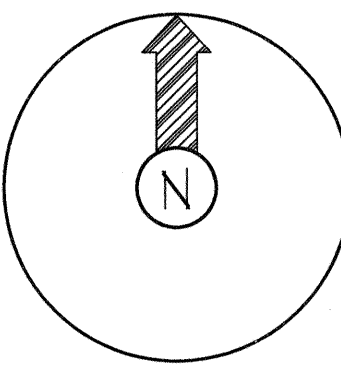
HANGER SPACING FOR STEEL PIPE (THINWALL)

PIPE SIZE	HANGER SPACING
1" - 3"	12'
4" & LARGER	15'

*NO WORK ON RISER, NO CALCS NEEDED



TYPICAL FLEXIBLE SPRINKLER DROP PIPING TO BE INSTALLED 8" ABOVE CEILING TO ALLOW FOR FLEXIBLE SPRINKLER DROP CONNECTIONS



CONSTRUCTION:
INSULATED METAL DECK ROOF ON STEEL BEAMS & BAR JOIST • ELEV. AS NOTED ON PLAN

PIPE TYPE:
SCREWED 2" AND SMALLER TO BE SCH. 40 PIPE, WELDED 2" AND LARGER TO BE SCH. 10 PIPE

DESIGN CRITERIA:
PER NFPA 13, LIGHT HAZARD, 0.10 GPM/SQFT FOR 1500 SQFT. OPERATING
MAX 225 SQFT/HEAD SPACING • 100 GPM FOR HOSE ALLOWANCE

DATE	REVISION

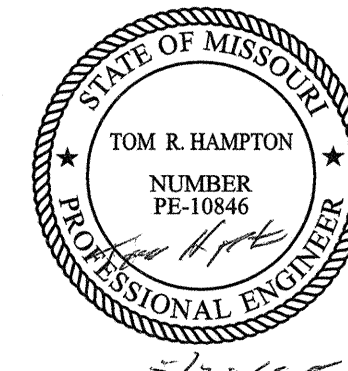
Symbol	Description
○	Hydraulic Reference Points
⊕=0'-0"	Elev. Below Top of Steel
⊕L=0'-0"	Elev. Above Finished Floor
+ Ⓢ08 0'-0"	Elev. of Top of Steel
Ⓢ	Ceiling Height
—	Denotes Hanger Location
○	Rise up or down
ALL PIPE CUTS ARE CENTER TO CENTER	

Symbol	Count	NPT	Orif.	Make	Model	Finish	Style	Temp.	R=	SIN
⊙	20	1/2"	1/2"	Viking	QR	CHROME	EXISTING PENDENT TO REMAIN	155°	5.6	VK3021
⊙	14	3/4"	3/4"	Viking	QR	CHROME	EXISTING EC PENDENT TO REMAIN	155°	112	VK6008
⊙							EXISTING EC PENDENT TO REMAIN			
⊙							EXISTING UPRIGHT TO REMAIN			

NOTICE OF NONRESPONSIBILITY

THIS DRAWING SHALL BE USED AS A CONSTRUCTION GUIDE ONLY. ADVANTAGE FIRE PROTECTION SYSTEMS, INC. ASSUMES NO RESPONSIBILITY FOR UNAUTHORIZED USE OF THESE DRAWINGS. THE USE OF THIS DRAWING FOR STRUCTURAL OR ARCHITECTURAL PURPOSES IS NOT AUTHORIZED. THIS PRINT IS THE EXCLUSIVE PROPERTY OF:

ADVANTAGE FIRE PROTECTION SYSTEMS, INC.



FIRE SPRINKLER TENANT FINISH

KIDZ FIRST THERAPY
LAKEWOOD BUSINESS PARK
2704 NE INDEPENDENCE AVE.
LEE'S SUMMIT, MO 64046

ADVANTAGE
FIRE PROTECTION SYSTEMS INC.
"We are your Advantage"
404B N.W. 11th Street
Blue Springs, MO. 64015
Tel. (816) 224-3400

REVIEWING AUTHORITY LS FIRE DEPT	HEADS THIS SHEET 34
TOTAL HEADS FOR JOB 34	SCALE 1/8" = 1'-0"
DRAWN BY DANIAL LOGSTON	REVISION DATE
DATE DRAWN 5-21-2025	CONTRACT NUMBER J-2472
DRAWING NUMBER 1 OF 1	