

- 1 FUTURE 500 GALLON OIL/SAND SEPARATOR TO BE INSTALLED. REFER TO DETAILS SHEET P600 FOR
2 MORE INFORMATION.
- 3 PROVIDE A 3" VENT THROUGH THE ROOF PER DETAIL, SHEET P600.
- 4 ROUTE 4" LINE FROM OIL/SAND SEPARATOR FOR DAYLIGHT DISCHARGE. FIELD VERIFY EXACT
5 LOCATION OF TERMINATION.
- 6 TRIM TRENCH DRAIN ENDS PER THE MANUFACTURER'S INSTALLATION INSTRUCTIONS PRIOR TO
7 INSTALLATION SO THAT GRATE FITS WITHOUT GAPS. INSTALL TRENCH DRAIN WITH SLIGHT POSITIVE
8 SLOPE TOWARD THE DRAIN CONNECTION TO AVOID STANDING WATER IN TRENCH DRAIN.
- 9 FUTURE 2" VENT PIPING UP THROUGH ROOF AND TIGHT AGAINST WALL FOR FUTURE OIL/SAND
10 SEPARATOR.
- 11 FLOOR DRAIN FOR BACKFLOW PREVENTER. REFER TO SHEET P100 FOR MORE INFORMATION.
- 12 CAP 4" TRENCH DRAIN LINE FOR FUTURE CONNECTION TO OIL/SAND SEPARATOR.



NATHAN RAFF, ARCHITECT #A-2000000201

RESSUITE DATE

ADDENDUM 1 - 05/02/2025

PROFESSIONAL OF RECORD

STATE OF MISSOURI
LAURA MITCHELL
BLANCHARD
NUMBER PE-200701344
5.2.2025

©
THIS PRINT IS THE PROPERTY OF MISSOURI REGISTERED PROFESSIONALS, LTD.
IT REMAINS THE PROPERTY OF MISSOURI REGISTERED PROFESSIONALS, LTD.

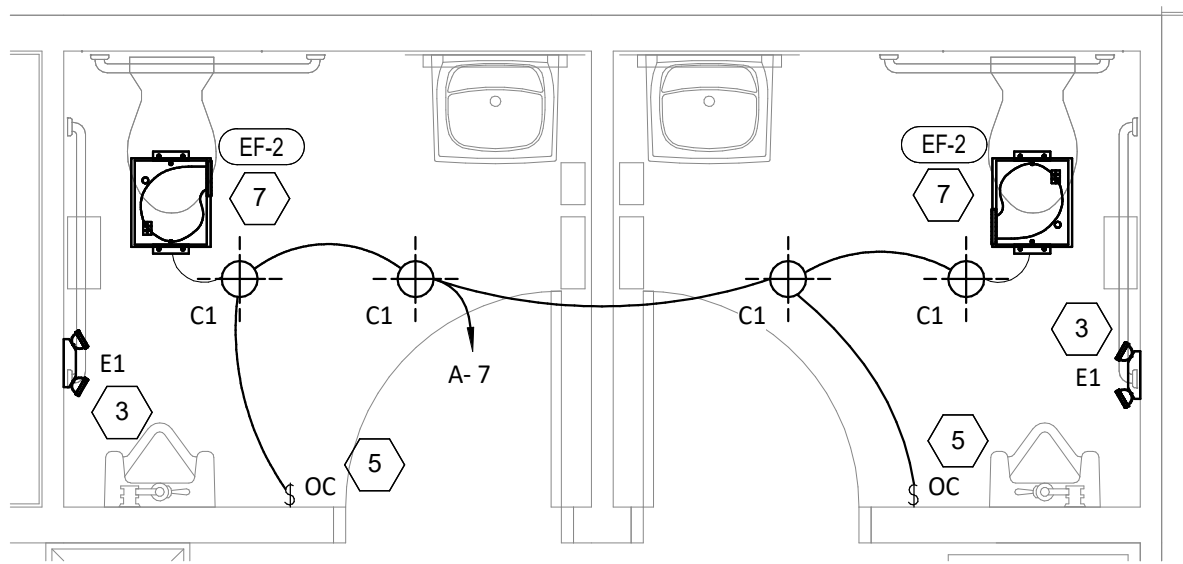
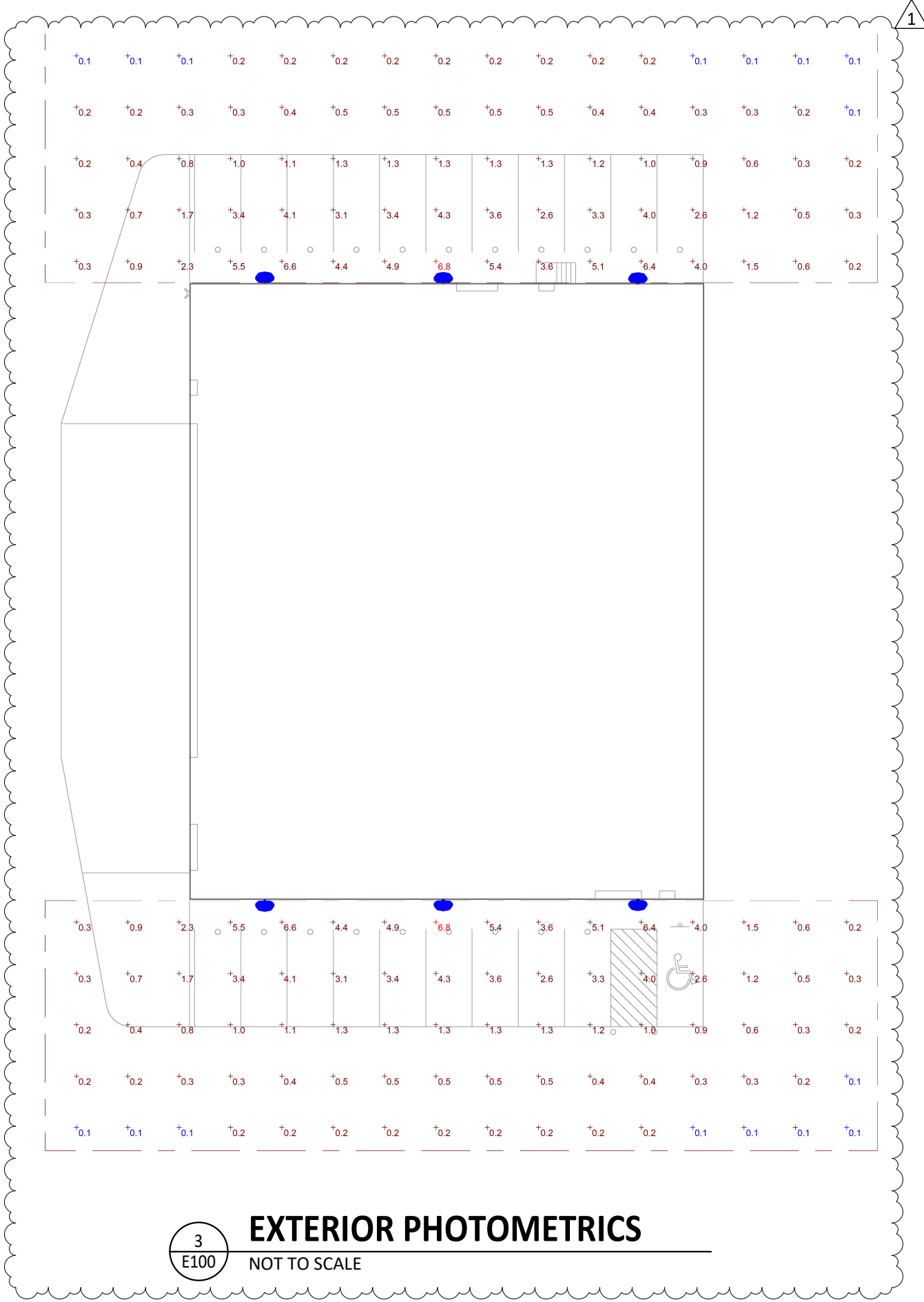
PROJECT	RAPP
PROJECT NO.	241121
DATE	04/14/2025
AMEND TITLE	
	LEACHING PLAN WASTE & VENT
HEET NO.	P110

ELECTRICAL LIGHTING PLAN NOTES

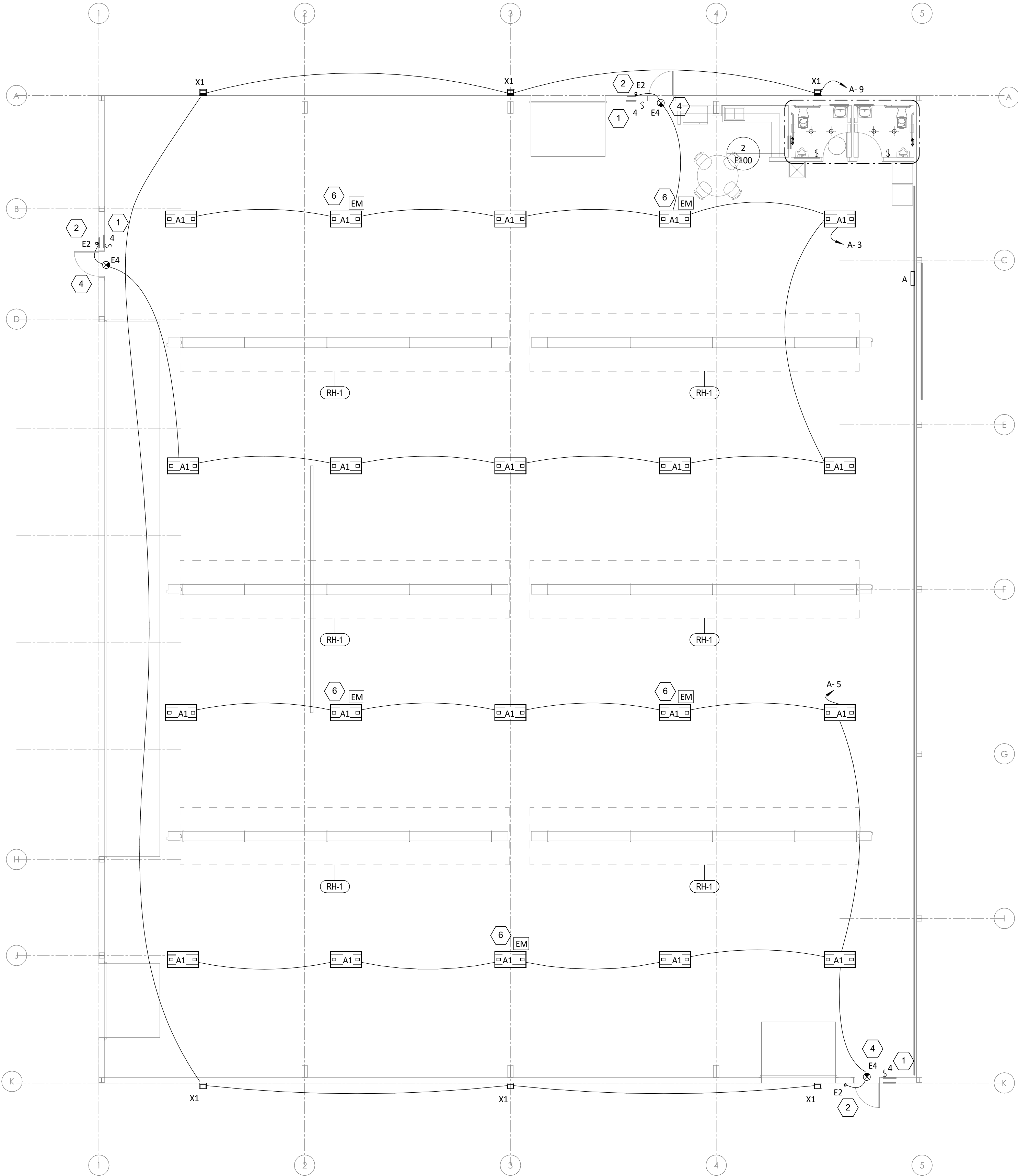
- 1 PROVIDE 4-WAY SWITCH FOR HIGH BAY HANGAR LIGHTING. VERIFY SWITCH LOCATIONS AND CONTROL ZONES WITH OWNER PRIOR TO INSTALL.
- 2 PROVIDE REMOTE EMERGENCY LIGHT MOUNTED AT 8'-0" AFF. COORDINATE EXACT LOCATION WITH OWNER AND CONCEAL LOW VOLTAGE WIRING TO INTERIOR EXIT SIGN.
- 3 WALL MOUNT THE EMERGENCY LIGHT FIXTURE AT 6" BELOW THE CEILING. PROVIDE UNSWITCHED HOT TO FIXTURE, CIRCUITED AHEAD OF ALL LOCAL AND GLOBAL SWITCHING.
- 4 VERIFY MOUNTING HEIGHT OF EXIT SIGN PRIOR TO ROUGH IN.
- 5 INSTALL WALL-MOUNTED OCCUPANCY SENSOR AT 42" AFF. ADJUST OCCUPANCY SENSOR TO PROVIDE AUTOMATIC ON/AUTOMATIC OFF OPERATION WITH A FIXED TIMER OF 30 MINUTES AND WITH BOTH THE PASSIVE INFRARED AND ULTRASONIC SENSORS ENABLED.
- 6 EMERGENCY LIGHT FIXTURE SHALL BE SWITCHED DURING NORMAL OPERATION. UPON LOSS OF POWER, FIXTURE SHALL BE ENERGIZED VIA THE EMERGENCY FIXTURE, ONBOARD EMERGENCY LIGHTING INVERTER.
- 7 INTERLOCK EXHAUST FAN OPERATION WITH RESTROOM LIGHTING.

LIGHTING FIXTURE SCHEDULE

TAG	COUNT	DESCRIPTION	MOUNTING	VOLTAGE	WATTS	BASIS FOR DESIGN			REMARKS
						MANUFACTURER	MODEL	LAMP	
A1	20	MODULAR HIGH BAY	SUSPENDED	120 V	295 W	GH-4-L400-840-FA-UNIV	HE WILLIAMS	LED	COORDINATE MOUNTING HEIGHT WITH ARCHITECT. REFER TO E100 FOR FIXTURES THAT SHALL BE PROVIDED WITH AN EMERGENCY FEATURE. FIXTURES DENOTED WITH 'EM'. LED TRIM FURNISHED WITH GU24 SOCKET ADAPTER
C1	4	RECESSED 6IN CAN LIGHT	CEILING	120 V	17 W	NORA LIGHTING	NHIC-6G24ATFL WITH NLCBC-65130WW LED TRIM	LED	
E1	2	EMERGENCY LIGHT - DUAL HEAD	WALL	120 V	2 W	EXITRONIX	LED-90	INTEGRAL LED	90 MINUTE BATTERY BACKUP
E2	3	EXTERIOR REMOTE EMERGENCY LIGHT	WALL	4 V	1 W	EXITRONIX	MLED1-WP	INTEGRAL LED	LOW VOLTAGE REMOTE EMERGENCY LIGHT POWERED BY REMOTE-CAPABLE EXIT SIGN WITH MOUNTING PLATE
E4	3	EXIT SIGN WITH EMERGENCY LIGHT - STANDARD RED LETTERS	WALL	120 V	2 W	EXITRONIX	CLED-U	INTEGRAL LED	90 MINUTE BATTERY BACKUP WITH INTEGRAL EMERGENCY LIGHT, REMOTE HEAD CAPABLE
X1	6	EXTERIOR WALL PACK	WALL	120 V	49 W	HE WILLIAMS	VWPH-L60-840-T3-SDGL	LED	MOUNT AT 15'-0". COORDINATE FINISH WITH ARCHITECT.



2
E100
ENLARGED LIGHTING PLAN
3/8" = 1'-0"



1
E100
LIGHTING FLOOR PLAN
1/8" = 1'-0"

NEW BUILDING FOR:
LS MANAGEMENT SERVICES, LLC
STREET ADDRESS TBD
LEE'S SUMMIT, MO



Blanchard AE Group

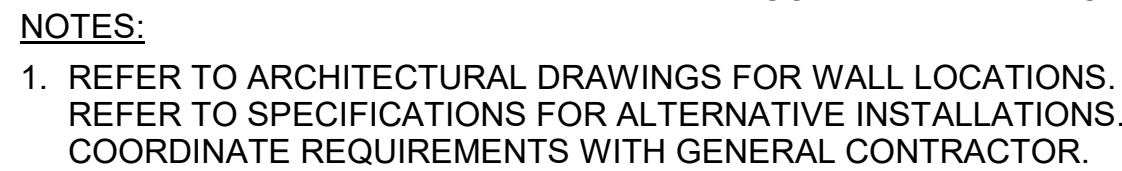
1425 WAKARUSA DR. STE B
LAWRENCE, KS 66049
PH:785-863-0300



112 S. Main St., Nixa, MO 65714 Ph: 417-724-8853
NATHAN RAPP, ARCHITECT #A-200808021

REISSUE DATE

ADDENDUM 1 - 05/02/2025

[illegible]

112 S. Main St., Nixa, MO 65714 Ph: 417-724-8553
NATHAN RAPP, ARCHITECT #A-2008008201

ARCHITECT	RAPP
PROJECT NO.	241121
DATE	04/14/2025
DRAWING TITLE	ELECTRICAL SCHEDULES & DETAILS
SHEET NO.	E600

E600