

GENERAL NOTES:

ALL FITTINGS CONFORM TO SECTION 2-4 OF NFPA PAMPHLET 13.

VALVES ON CONNECTIONS TO WATER SUPPLIES, SECTIONAL CONTROL VALVES AND OTHER VALVES IN SUPPLY PIPES TO SPRINKLERS SHALL BE SUPERVISED OPEN BY AN APPROVED METHOD.

IT IS THE OWNERS RESPONSIBILITY TO PROVIDE ADEQUATE HEAT TO KEEP THE SPRINKLER SYSTEM FROM FREEZING.

ALL ELECTRICAL WIRING OF ALARM BELLS, FLOW SWITCHES AND TAMPER SWITCHES (IF REQUIRED) TO BE DONE BY OTHERS.

THE SPRINKLER SYSTEM TO BE INSTALLED IN ACCORDANCE WITH NFPA 13.

HANGERS TO BE SPACED TO MEET NFPA REQUIREMENTS

PER NFPA 13, SECTION 8.6.3.2.4, WITHIN SMALL ROOMS AS DEFINED IN SECTION 3.3.20, SPRINKLERS SHALL BE PERMITTED TO BE LOCATED NOT MORE THAN 9 FT. FROM ANY SINGLE WALL, AND SPRINKLER SPACING LIMITATIONS OF SECTION 8.6.3 AND AREA LIMITATIONS OF TABLE 8.6.2.2.1(a) SHALL NOT BE EXCEEDED. JFS MAY MODIFY HEADS SHOWN ON THIS DRAWING TO COMPLY WITH THIS RULE.

CL = CENTER LINE OF PIPE BELOW TOP OF STEEL

EL = CENTER LINE OF PIPE ABOVE FINISHED FLOOR

DESIGN CRITERIA:

BUILDING CODE: 2018 IRC  
OCCUPANCY TYPE: B  
CONSTRUCTION TYPE: 2-B  
OFFICE/BATHROOMS / DINING AREAS  
PER NFPA 13, 2016 EDITION:  
LIGHT HAZARD  
225 S.F. SPRINKLER SPACING  
STORAGE/EQUIPMENT ROOMS, KITCHEN AREAS, ETC...  
PER NFPA 13, 2016 EDITION:  
ORDINARY HAZARD GROUP 2  
MAXIMUM 130 S.F. SPRINKLER SPACING

CONSTRUCTION:

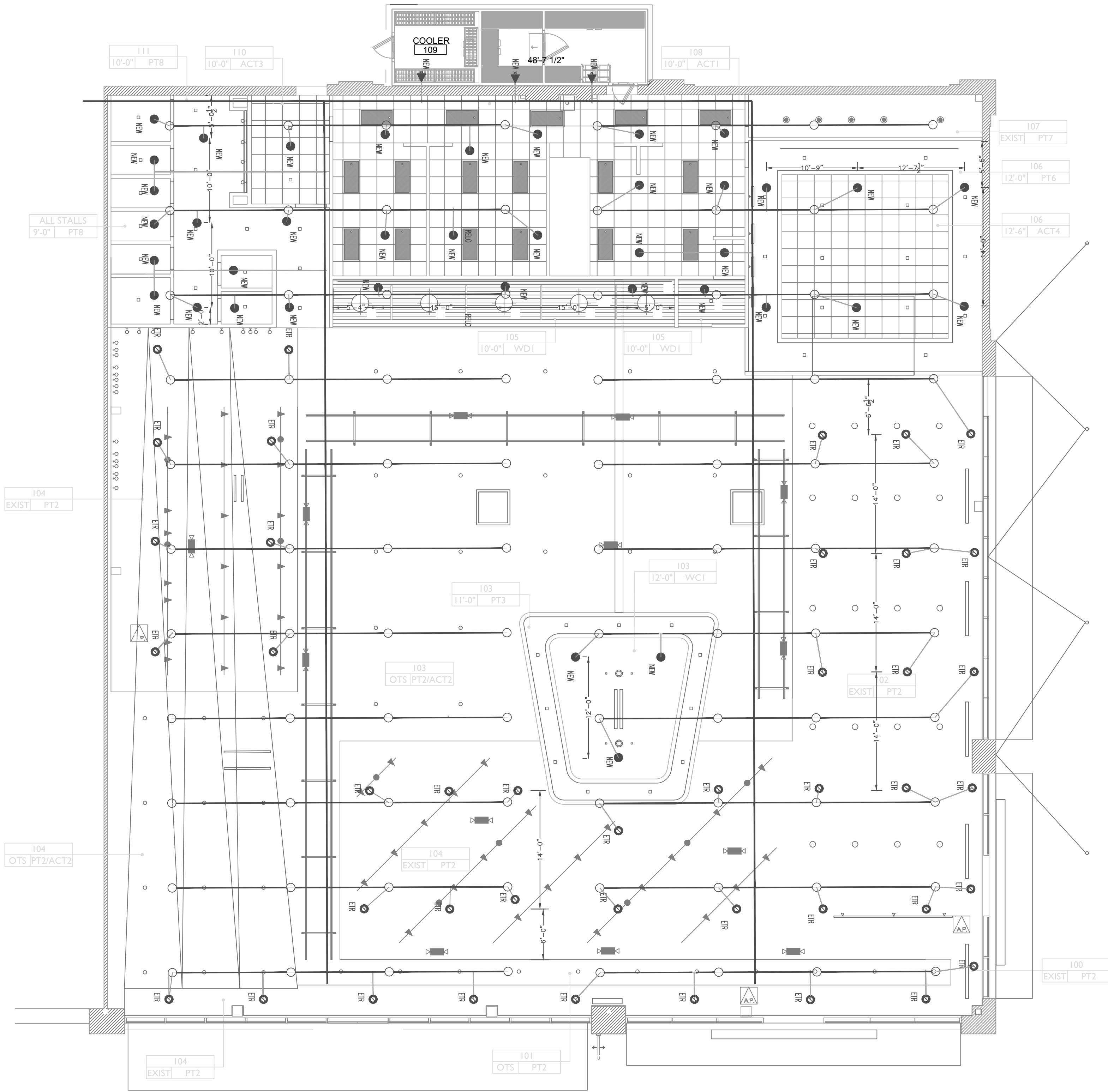
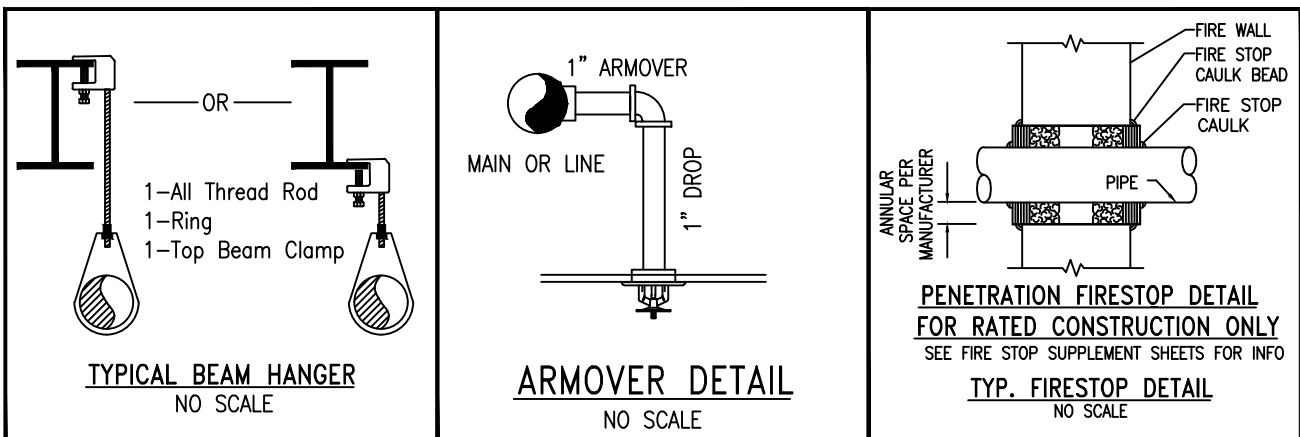
STEEL BEAM AND BAR JOISTS

PLAN NOTES:

- ALL GROOVED MAIN PIPING IS TO BE SCH. 10 PIPE
- ALL GROOVED BRANCHLINE PIPING TO BE SCH. 10 PIPE
- ALL THREADED PIPING TO BE SCH. 40 PIPE
- ALL FITTINGS TO BE DUCTILE IRON
- THIS RENOVATION WILL NOT ALTER THE EXISTING CALCULATIONS THEREFORE NEW CALCULATIONS WILL NOT BE NEEDED.

HANGER SPACING TABLE

NOMINAL PIPE SIZE	3/4"	1"	1 1/4"	1 1/2"	2"	2 1/2"	3"	3 1/2"	4"	5"	6"	8"
STEEL PIPE EXCEPT THREADED LIGHTWALL	N/A	12-0	12-0	15-0	15-0	15-0	15-0	15-0	15-0	15-0	15-0	15-0
THREADED LIGHTWALL STEEL PIPE	N/A	12-0	12-0	12-0	12-0	12-0	N/A	N/A	N/A	N/A	N/A	N/A
COPPER TUBE	8-0	8-0	10-0	10-0	12-0	12-0	12-0	15-0	15-0	15-0	15-0	15-0
CPVC	5-6	6-0	6-6	7-0	8-0	9-0	10-0	N/A	N/A	N/A	N/A	N/A



MEP Engineering Group  
Certificate of Authority #2016015108  
mepengineeringgroup@gmail.com  
(816)778-1195

FLOOR Plan  
SCALE: 1/8" = 1'-0"



General Notes

- All Pipe Locations are to be Field Measured Prior to Fabrication and Installation by Sprinkler Contractor.
- All Pipe Dimensions Shown are **Center to Center**.
- High Temperature Heads are to be Field Located Where Required.
- All Pipe and Hangers are to be Installed per NFPA #13.
- Hangers are to be U.L. Listed and F.M. Approved.

Job:

CRAFT PUTT  
840-M NW BLUE PARKWAY  
LEE'S SUMMIT, MO. 64086

13906 CENTURY LANE  
GRANDVIEW, MO 64030  
(816) 737-9991

10/18/2024

MEP Engineering Group  
Certificate of Authority #2016015108  
mepengineeringgroup@gmail.com  
(816)778-1195

Rev.	Description	By	Date
1	ISSUED FOR PERMIT	WJS	10/17/2024
2	REVISION	WJS	
3	REVISION	WJS	
4	REVISION	WJS	
5	REVISION	WJS	
6	REVISION	WJS	
7	REVISION	WJS	
8	REVISION	WJS	
9	REVISION	WJS	
10	REVISION	WJS	
11	REVISION	WJS	
12	REVISION	WJS	
13	REVISION	WJS	
14	REVISION	WJS	
15	REVISION	WJS	
16	REVISION	WJS	
17	REVISION	WJS	
18	REVISION	WJS	
19	REVISION	WJS	
20	REVISION	WJS	
21	REVISION	WJS	
22	REVISION	WJS	
23	REVISION	WJS	
24	REVISION	WJS	
25	REVISION	WJS	
26	REVISION	WJS	
27	REVISION	WJS	
28	REVISION	WJS	
29	REVISION	WJS	
30	REVISION	WJS	
31	REVISION	WJS	
32	REVISION	WJS	
33	REVISION	WJS	
34	REVISION	WJS	
35	REVISION	WJS	
36	REVISION	WJS	
37	REVISION	WJS	
38	REVISION	WJS	
39	REVISION	WJS	
40	REVISION	WJS	
41	REVISION	WJS	
42	REVISION	WJS	
43	REVISION	WJS	
44	REVISION	WJS	
45	REVISION	WJS	
46	REVISION	WJS	
47	REVISION	WJS	
48	REVISION	WJS	
49	REVISION	WJS	
50	REVISION	WJS	
51	REVISION	WJS	
52	REVISION	WJS	
53	REVISION	WJS	
54	REVISION	WJS	
55	REVISION	WJS	
56	REVISION	WJS	
57	REVISION	WJS	
58	REVISION	WJS	
59	REVISION	WJS	
60	REVISION	WJS	
61	REVISION	WJS	
62	REVISION	WJS	
63	REVISION	WJS	
64	REVISION	WJS	
65	REVISION	WJS	
66	REVISION	WJS	
67	REVISION	WJS	
68	REVISION	WJS	
69	REVISION	WJS	
70	REVISION	WJS	
71	REVISION	WJS	
72	REVISION	WJS	
73	REVISION	WJS	
74	REVISION	WJS	
75	REVISION	WJS	
76	REVISION	WJS	
77	REVISION	WJS	
78	REVISION	WJS	
79	REVISION	WJS	
80	REVISION	WJS	
81	REVISION	WJS	
82	REVISION	WJS	
83	REVISION	WJS	
84	REVISION	WJS	
85	REVISION	WJS	
86	REVISION	WJS	
87	REVISION	WJS	
88	REVISION	WJS	
89	REVISION	WJS	
90	REVISION	WJS	
91	REVISION	WJS	
92	REVISION	WJS	
93	REVISION	WJS	
94	REVISION	WJS	
95	REVISION	WJS	
96	REVISION	WJS	
97	REVISION	WJS	
98	REVISION	WJS	
99	REVISION	WJS	
100	REVISION	WJS	
101	REVISION	WJS	
102	REVISION	WJS	
103	REVISION	WJS	
104	REVISION	WJS	
105	REVISION	WJS	
106	REVISION	WJS	
107	REVISION	WJS	
108	REVISION	WJS	
109	REVISION	WJS	
110	REVISION	WJS	
111	REVISION	WJS	
112	REVISION	WJS	
113	REVISION	WJS	
114	REVISION	WJS	
115	REVISION	WJS	
116	REVISION	WJS	
117	REVISION	WJS	
118	REVISION	WJS	
119	REVISION	WJS	
120	REVISION	WJS	
121	REVISION	WJS	
122	REVISION	WJS	
123	REVISION	WJS	
124	REVISION	WJS	
125	REVISION	WJS	
126	REVISION	WJS	
127	REVISION	WJS	
128	REVISION	WJS	
129	REVISION	WJS	
130	REVISION	WJS	
131	REVISION	WJS	
132	REVISION	WJS	
133	REVISION	WJS	
134	REVISION	WJS	
135	REVISION	WJS	
136	REVISION	WJS	
137	REVISION	WJS	
138	REVISION	WJS	
139	REVISION	WJS	
140	REVISION	WJS	
141	REVISION	WJS	
142	REVISION	WJS	
143	REVISION	WJS	
144	REVISION	WJS	
145	REVISION	WJS	
146	REVISION	WJS	
147	REVISION	WJS	
148	REVISION	WJS	
149	REVISION	WJS	
150	REVISION	WJS	
151	REVISION	WJS	
152	REVISION	WJS	
153	REVISION	WJS	
154	REVISION	WJS	
155	REVISION	WJS	
156	REVISION	WJS	
157	REVISION	WJS	
158	REVISION	WJS	
159	REVISION	WJS	
160	REVISION	WJS	
161	REVISION	WJS	
162	REVISION	WJS	
163	REVISION	WJS	
164	REVISION	WJS	
165	REVISION	WJS	
166	REVISION	WJS	
167	REVISION	WJS	
168	REVISION	WJS	
169	REVISION	WJS	
170	REVISION	WJS	
171	REVISION	WJS	
172	REVISION	WJS	
173	REVISION	WJS	
174	REVISION	WJS	
175	REVISION	WJS	
176	REVISION	WJS	
177	REVISION	WJS	
178	REVISION	WJS	
179	REVISION	WJS	
180	REVISION	WJS	
181	REVISION	WJS	
182	REVISION	WJS	
183	REVISION	WJS	
184	REVISION	WJS	
185	REVISION	WJS	
186	REVISION	WJS	
187	REVISION	WJS	
188	REVISION	WJS	
189	REVISION	WJS	
190	REVISION	WJS	
191	REVISION	WJS	
192	REVISION	WJS	
193	REVISION	WJS	
194	REVISION	WJS	
195	REVISION	WJS	
196	REVISION	WJS	
197	REVISION	WJS	
198	REVISION	WJS	
199	REVISION	WJS	
200	REVISION	WJS	
201	REVISION	WJS	
202	REVISION	WJS	
203	REVISION	WJS	
204	REVISION	WJS	
205	REVISION	WJS	
206	REVISION	WJS	
207	REVISION	WJS	
208	REVISION	WJS	
209	REVISION	WJS	
210	REVISION	WJS	
211	REVISION	WJS	
212	REVISION	WJS	
213	REVISION	WJS	
214	REVISION	WJS	
215	REVISION	WJS	
216	REVISION	WJS	
217	REVISION	WJS	
218	REVISION	WJS	
219	REVISION	WJS	
220	REVISION	WJS	
221	REVISION	WJS	
222	REVISION	WJS	
223	REVISION	WJS	
224	REVISION	WJS	
225	REVISION	WJS	
226	REVISION	WJS	
227	REVISION	WJS	
228	REVISION	WJS	
229	REVISION	WJS	
230	REVISION	WJS	
231	REVISION	WJS	
232	REVISION	WJS	
233	REVISION	WJS	
234	REVISION	WJS	
235	REVISION	WJS	
236	REVISION	WJS	
237	REVISION	WJS	
238	REVISION	WJS	
239	REVISION	WJS	
240	REVISION	WJS	
241	REVISION	WJS	
242	REVISION	WJS	
243	REVISION	WJS	
244	REVISION	WJS	
245	REVISION	WJS	
246	REVISION	WJS	
247	REVISION	WJS	
248	REVISION	WJS	
249	REVISION	WJS	
250	REVISION	WJS	
251	REVISION	WJS	
252	REVISION	WJS	
253	REVISION	WJS	
254	REVISION	WJS	
255	REVISION	WJS	
256	REVISION	WJS	
257	REVISION	WJS	
258	REVISION	WJS	
259	REVISION	WJS	
260	REVISION	WJS	
261	REVISION	WJS	
262	REVISION	WJS	
263	REVISION	WJS	
264	REVISION	WJS	
265	REVISION	WJS	
266	REVISION	WJS	
267	REVISION	WJS	
268	REVISION	WJS	
269	REVISION	WJS	
270	REVISION	WJS	
271	REVISION	WJS	
272	REVISION	WJS	
273	REVISION	WJS	
274	REVISION	WJS	
275	REVISION	WJS	
276	REVISION	WJS	
277	REVISION	WJS	
278	REVISION	WJS	
279	REVISION	WJS	
280	REVISION	WJS	
281	REVISION	WJS	
282	REVISION	WJS	
283	REVISION	WJS	
284	REVISION	WJS	
285	REVISION	WJS	
286	REVISION	WJS	
287	REVISION	WJS	
288	REVISION	WJS	
289	REVISION	WJS	
290	REVISION	WJS	
291	REVISION	WJS	
292	REVISION	WJS	
293	REVISION	WJS	
294	REVISION	WJS	
295	REVISION	WJS	
296	REVISION	WJS	
297	REVISION	WJS	
298	REVISION	WJS	
299	REVISION	WJS	
300	REVISION	WJS	
301	REVISION	WJS	
302	REVISION	WJS	
303	REVISION	WJS	
304	REVISION	WJS	
305	REVISION	WJS	
306	REVISION	WJS	
307	REVISION	WJS	
308	REVISION	WJS	
309	REVISION	WJS	
310	REVISION	WJS	
311	REVISION	WJS	
312	REVISION	WJS	
313	REVISION	WJS	
314	REVISION	WJS	
315	REVISION	WJS	
316	REVISION	WJS	
317	REVISION	WJS	
318	REVISION	WJS	
319	REVISION	WJS	
320	REVISION	WJS	
321	REVISION	WJS	
322	REVISION	WJS	
323	REVISION	WJS	
324	REVISION	WJS	
325	REVISION	WJS	
326	REVISION	WJS	
327	REVISION	WJS	
328	REVISION	WJS	
329	REVISION	WJS	
330	REVISION	WJS	
331	REVISION	WJS	
332	REVISION	WJS	
333	REVISION	WJS	
334	REVISION	WJS	
335	REVISION	WJS	
336	REVISION	WJS	
337	REVISION	WJS</	