



PROPOSAL REQUEST

- Owner City of Lee's Summit
- Consultant Crawford, Murphy, & Tilly, Inc.
- Contractor Fogel-Anderson Const. Co.
- Field

PROJECT:	LXT Hangar 2 Eastside Development	PROPOSAL NO:	11
OWNER:	City of Lee's Summit	DATE OF ISSUANCE:	04/11/25
TO:	Fogel-Anderson Construction 1212 E. 8th Street Kansas City, MO. 64106	ARCHITECT:	Wellner Architects, Inc. 1627 Main Street, #100 Kansas City, MO 64108
COPY:	File	ARCHITECT'S PROJECT:	2219
CONTRACT FOR:	General Construction		
CONTRACT DATE:			

Please submit an itemized proposal for changes in the Contract Sum and Contract Time for proposed modifications to the Contract Documents described herein (Additions or Subtractions Thereof). Submit proposal within 10 days, or notify the Architect in writing of the date on which you anticipate submitting your proposal.
 THE IS NOT A CHANGE ORDER OR A CONSTRUCTION CHANGE DIRECTIVE.

Description

Item 1. SHEET A610 FINISH SCHEDULE:

FINISH SCHEDULE rm 113 ASSISTANT MANAGER **Revise** the floor finish from sealed concrete SC-1 to carpet CPT-1

Item 2. SHEET E611 FINISH FLOOR PLANS:

FINISH FLOOR PLAN - LEVEL 1 ASSISTANT MANAGER rm 1113 **Revise** the floor finish from sealed concrete SC-1 to carpet CPT-1

Item 3. SHEET E201 POWER FLOOR PLANS:

POWER SECOND FLOOR PLAN 2 FUTURE OFFICE rm 211 **Add** four plex receptacle.

POWER SECOND FLOOR PLAN 2 PILOT LOUNGE rm 216 **Add** duplex receptacle.

Item 4. SHEET E301 SYSTEM FLOOR PLANS:

SYSTEM SECOND FLOOR PLAN 2 FUTURE OFFICE rm 211 **Add** data/phone outlet.

Specification Modifications

No changes to specifications

Drawing Modifications

A610 FINISH SCHEDULE

A611 FINISH FLOOR PLANS

E201 POWER FLOOR PLANS

E301 SYSTEMS FLOOR PLANS

END OF PROPOSAL REQUEST



FINISH SCHEDULE								
ROOM NUMBER	ROOM NAME	FLOOR	BASE	WALL				REMARKS
				NORTH	EAST	SOUTH	WEST	
100	VESTIBULE	WOT-1	RB-1	PNT-1	PNT-1	PNT-1	PNT-1	
101	ELEVATOR	CT-1	-	CMU-1	CMU-1	CMU-1	CMU-1	2
102	STAIR 2	SC-1	-	PNT-1	PNT-1	PNT-1	PNT-1	
103	STAIR 1	SC-1	-	PNT-1	PNT-2	PNT-1	PNT-1	
104	CORRIDOR	SC-1	RB-1	PNT-2	PNT-1	PNT-1	PNT-1	
105	WOMEN'S	CT-1	CTB-1	CT-2	WC-1	WC-1	CT-2	3
106	MEN'S	CT-1	CTB-1	CT-2	CT-2	WC-1	WC-1	3
107	LOBBY / WAITING	SC-1 / CPT-1	RB-1	PNT-4	PNT-1	PNT-1	PNT-1	
108	VENDING / COFFEE BAR	SC-1	RB-1	PNT-4	PNT-4	PNT-2	PNT-1	
109	RECEPTION / CAR RENTAL	SC-1	RB-1	PNT-1	PNT-1	PNT-1	PNT-1	
110	VESTIBULE	WOT-1	RB-1	PNT-1	PNT-1	PNT-1	PNT-1	
111	CORRIDOR	SC-1	RB-1	PNT-1	PNT-4	PNT-1	PNT-1	
112	FLIGHT PLANNING	SC-1	RB-1	PNT-1	PNT-1	PNT-1	PNT-1	
113	ASSISTANT MANAGER	CPT-1	RB-1	PNT-4	PNT-1	PNT-1	PNT-1	
114	LINE OFFICE	SC-1	RB-1	PNT-4	PNT-1	PNT-1	PNT-1	
115	JANITOR	SC-1	RB-2	FRP-1/PNT-1	PNT-1/FRP-1	PNT-1	PNT-1	4
116	STORAGE	SC-1	RB-2	PNT-1	PNT-1	PNT-1	PNT-1	
117	LAUNDRY	SC-1	RB-2	PNT-1	PNT-1	PNT-1	PNT-1	
118	MECH / ELEC	SC-1	RB-2	PNT-1	PNT-1	PNT-1	PNT-1	
119	LAUNDRY / STORAGE	SC-1	RB-1	PNT-1	PNT-1	PNT-1	PNT-1	
120	FLIGHT SIMULATORS	SC-1	RB-1	PNT-1	PNT-1	PNT-1	PNT-1	
121	ACTIVE LEARN LAB	SC-1	RB-1	PNT-1	PNT-1	PNT-1	PNT-1	
122	WESTROOM	SC-1	RB-2	PNT-5	PNT-5	PNT-5	PNT-5	1
123	RESTROOM	CT-4	CTB-2	CT-5	PNT-5	PNT-5	CT-5	
124	LEARNING STUDIO	CPT-1	RB-1	PNT-1	PNT-2	PNT-1	PNT-1	
125	OFFICE	CPT-1	RB-1	PNT-1	PNT-1	PNT-1	PNT-2	
126	HANGAR	PNT-9	-	-	-	-	-	5.6
127	OSE STORAGE	SC-1	-	-	-	-	-	5.6
201	ELEVATOR	CT-1	-	CMU-1	CMU-1	CMU-1	CMU-1	
202	STAIR 2	SC-1	-	PNT-1	PNT-1	PNT-1	PNT-1	
203	STAIR 1	SC-1	-	PNT-1	PNT-1	PNT-1	PNT-1	
204	CORRIDOR	SC-1	RB-1	PNT-1	PNT-1	PNT-1	PNT-1	
205	CONFERENCE	CPT-2	RB-1	PNT-1	PNT-4	PNT-1	PNT-1	
206	OPEN OFFICE	CPT-1	RB-1	PNT-1	PNT-1	PNT-1	PNT-1	
207	CORRIDOR	SC-1	RB-1	PNT-1	PNT-1	PNT-1	PNT-1	
208	RESTROOM	CT-1	CTB-1	PNT-5	CT-2	CT-2	PNT-5	
209	JANITOR	SC-1	RB-2	PNT-1	PNT-1/FRP-1	PNT-1/FRP-1	PNT-1	4
210	RESTROOM	CT-1	CTB-1	PNT-5	PNT-5	CT-2	CT-2	
211	FUTURE OFFICE	CPT-1	RB-1	PNT-1	PNT-1	PNT-1	PNT-1	
212	AIRPORT MANAGER	CPT-1	RB-1	PNT-1	PNT-1	PNT-2	PNT-1	
213	WORKROOM	SC-1	RB-1	PNT-1	PNT-1	PNT-1	PNT-1	
214	BREAKROOM	SC-1	RB-1	PNT-1	PNT-1	PNT-1	PNT-1	
215	I.T. CLOSET / MECH / ELEC	SC-1	RB-2	PNT-1	PNT-1	PNT-1	PNT-1	
216	PILOT LOUNGE	CPT-2	RB-1	PNT-4	PNT-4	PNT-1	PNT-4	
217	PILOT QUIET ROOM	CPT-2	RB-1	PNT-4	PNT-4	PNT-4	PNT-4	
218	DRONE PAD	CPT-1	RB-1	PNT-1	PNT-1	PNT-1	PNT-1	
218	FLIGHT PLANNING	CPT-2	RB-1	-	PNT-1	PNT-1	PNT-4	
219	OFFICE	CPT-1	RB-1	PNT-1	PNT-1	PNT-1	PNT-1	
220	CONFERENCE / CLASSROOM	CPT-1	RB-1	PNT-1	PNT-1	PNT-1	PNT-1	
221	STORAGE	SC-1	RB-2	PNT-1	PNT-1	PNT-1	PNT-1	
222	MECH / ELEC	SC-1	RB-2	PNT-1	PNT-1	PNT-1	PNT-1	
223	I.T. ROOM	SC-1	RB-2	PNT-1	PNT-1	PNT-1	PNT-1	
224	DRONE STORAGE	CPT-1	RB-1	PNT-1	PNT-1	PNT-1	PNT-1	

FINISH SCHEDULE REMARKS KEY

1. EPOXY PAINT ON COLUMN
2. ELEVATOR STRUCTURE CMU-1, CT-1 FLOORING IN CAB, WITH ELE-1 CAB FINISHES
3. CT-4 MOSAIC BEHIND SINKS, PER ELEVATIONS
4. FRP-1 AT MOP BASIN @ A HEIGHT OF 8'-0" AFF - EXTEND 3' OUT EITHER DIRECTION OF MOP BASIN AS ALLOWED
5. PREFINISHED LINER PANEL, (WHITE) AND PAINTED COLUMNS PER PLAN NOTES
6. PAINT CMU WALL TO MATCH LINER PANEL



1627 MAIN STREET, SUITE 600
KANSAS CITY, MO 64108



1627 MAIN STREET, SUITE 100
KANSAS CITY, MO 64108



1301 BURLINGTON STREET
NORTH KANSAS CITY, MO 64116

LEE'S SUMMIT MUNICIPAL AIRPORT
LEE'S SUMMIT AIRPORT

EASTSIDE DEVELOPMENT
CITY PROJECT NO. - 47732472

FINISH LEGEND					
Symbol	Manufacturer	Series/Pattern	Number	Color	Remarks
Carpet Tile					
CPT-1	Show Commercial	Flat Weave/Community	5T321 - 01518/01519	Raid / Raid Marjorelle	9 in x 36 in, 1:5 Ratio Stagger Installation - Mostly Natural Raid Color
CPT-2	Show Commercial	Flat Weave/Community	5T321 - 01500/01501	Souk / Souk Mosaic	9 in x 36 in, 1:5 Ratio Stagger Installation - Mostly Natural Souk Color
Ceilings					
CLG-1	Armstrong	Optima	3250	White	24" x 24" x 5/8" in 15/16" Prelude grid system with 1 15/16" Axiom Classic Trim in White
CLG-2	Armstrong	Optima	3250	White	24" x 24" x 5/8" in 15/16" Prelude grid system
CLG-3	GYPNUM WALL BRD			Painted per RCP	Hard Lid Ceiling
CLG-4	GYPNUM WALL BRD	Water Resistant		Painted per RCP	Wet area ceilings
CLG-5	Armstrong	Woodworks Linear Solid Wood	8177W1	Golden Maple	12" x 96" Prelude 15/16 Black grid system with 1 15/16" Axiom Classic Trim in Etched Gun Metal
CLG-6	INTERIOR LINER PANEL			White	Perforated, 29 Gauge, by PEMB Supplier at underside of roof insulation
Ceramic Tile					
CT-1	Anatolia	La Marca	ANALMNV2424H	Nero Venato	24" x 24" Rectified, Honed
CT-2	Anatolia	La Marca	ANALMNV1224H	Nero Venato	12" x 24" Rectified, Honed
CT-3	Anatolia	La Marca	ANALMNVMS22H	Nero Venato	2" x 2" Rectified, Honed
CT-4	Anatolia	La Marca	ANALMPA2424H	Paradiso Argento	24" x 24" Rectified, Honed, School Side RR
CT-5	Anatolia	La Marca	ANALMPA1224H	Paradiso Argento	12" x 24" Rectified, Honed, School Side RR
Ceramic Tile Base					
CTB-1	Anatolia	La Marca	ANALMNVBN312H	Nero Venato	3" x 12" Bullnose, Honed
CTB-2	Anatolia	La Marca	ANALMPABN312H	Paradiso Argento	3" x 12" Bullnose, Honed, School Side RR
Door Wood Finish					
WD-1	VT			Cherry Clear	Doors
Elevator					
ELE-1	Schneider		3100	Tupelo Taupe - Prime	Interior Elevator Finish
Fiberglass Reinforced Panel					
FRP-1	Mantle		P 151	Light Gray	
Ground Face Masonry Unit					
CMU-1	Trenwith Masonry	Trendstone		Shadow Gray	8"X16" CMU WITH INTEGRAL 8" SCORE PATTERN AND MORTAR MATCHING CMU FINISH COLOR, RAKE ALL MORTAR JOINTS TO ALIGN WITH CMU SCORE PATTERN
Grout					
G-1	Mapei			Charcoal 47	
G-2	Mapei			Charcoal 47	School Side RR
High Pressure Laminate					
HPL-1	Absorite		W2001-AIW	Artisan Natural Walnut	Cabinets, Front Desk
HPL-2	Fornica		4126-58	Sheer Fabric	Back Counters
HPL-3	Fornica		8909-NG	Cascara Teakwood	RR Partitions
Interior Door Frames					
IDF-1	Sherwin Williams		SW7069	Iron Ore	Match PNT-3
Paint					
PNT-1	Sherwin Williams	Eggshell	SW7064	Passive	PER FINISH PLANS
PNT-2	Sherwin Williams	Eggshell	SW9163	Tin Lizzie	PER FINISH PLANS
PNT-3	Sherwin Williams	Eggshell	SW7069	Iron Ore	EXPOSED STRUCTURE, STAIR, AND RAILINGS PER DETAILS
PNT-4	Sherwin Williams	Eggshell	SW4517	Rejoie	PER FINISH PLANS
PNT-5	Sherwin Williams	Epoxy Paint	SW7064	Passive	PER RCP
PNT-6	Sherwin Williams	Dryfall	SW7004	Snowbound	HARD LID CEILING/SOFFITS PER RCP
PNT-7	Sherwin Williams	Dryfall	SW9163	Tin Lizzie	HARD LID CEILING/SOFFITS PER RCP
PNT-8	Sherwin Williams	Dryfall	SW7069	Iron Ore	EXPOSED STRUCTURE/BEAMS
PNT-9	SikaFloor Multiflar HS	Epoxy	-	White	HANGAR FLOOR
PNT-10	Sherwin Williams		SW9500	Safety Red	AT FRONT FACES OF PEMB COLUMNS UP TO HEIGHT OF 28'-0"
Resilient Base					
B-1	Johnsonite	4' Mandalay	TA4	Gateway WG	
B-2	Johnsonite	4' Standard	TA4	Gateway WG	
Roller Shade Cloth					
RC-01	Mecho	1100 Series	1119	Silver Birch 1% open	Select windows in school space
RC-02	Mecho	700 Series	0702	Light Gray Blockout	Select interior windows in school space
Schluter					
SCH-1				Clear Anodized Aluminum	
Sealed Concrete					
SC-1		Sealed Concrete			WITH CLEAR SEALER, CONCRETE FLOORS TO BE FREE OF BUMPS, PITS, OR SCRAPES
Solid Surface					
SS-1	Fornica	Everform	109	Brite White	
SS-2	Bradley	Terreon		Alpine White	Bradley OmniDeck with WashBar Duo
Steel Railings					
SR-1					Match PNT-3
Walkoff Tile					
WOT-1	Show Commercial	Swift/All Access	5T414/14549	Step	24" X 24"
Wall Covering					
WC-1	IMBC	Scabbie	W92801	Cloudy Ink	



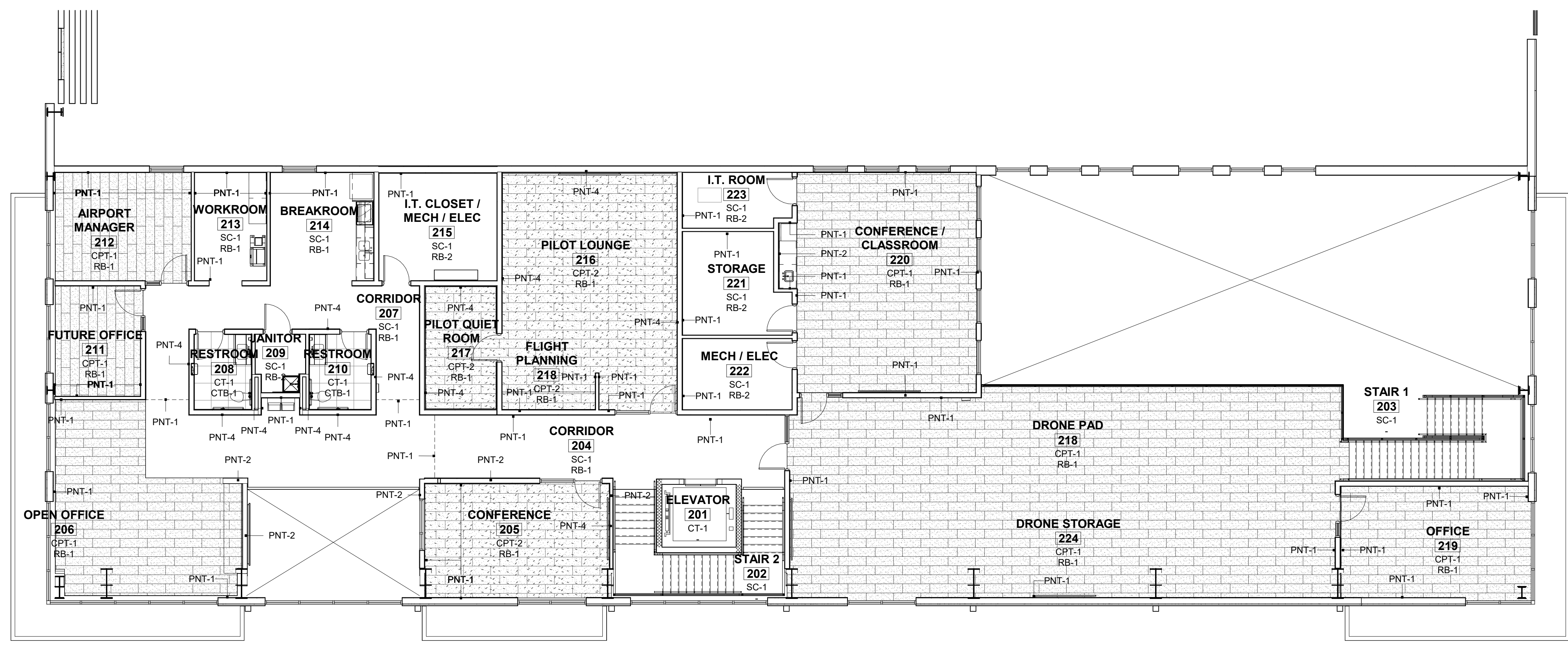
LEE'S SUMMIT MUNICIPAL AIRPORT
LEE'S SUMMIT, MO

MARK	DATE	DESCRIPTION
13	4/11/25	PR 11
11	4/11/25	PR 09
3	6/07/24	REV-3
2	3/29/24	REV-2

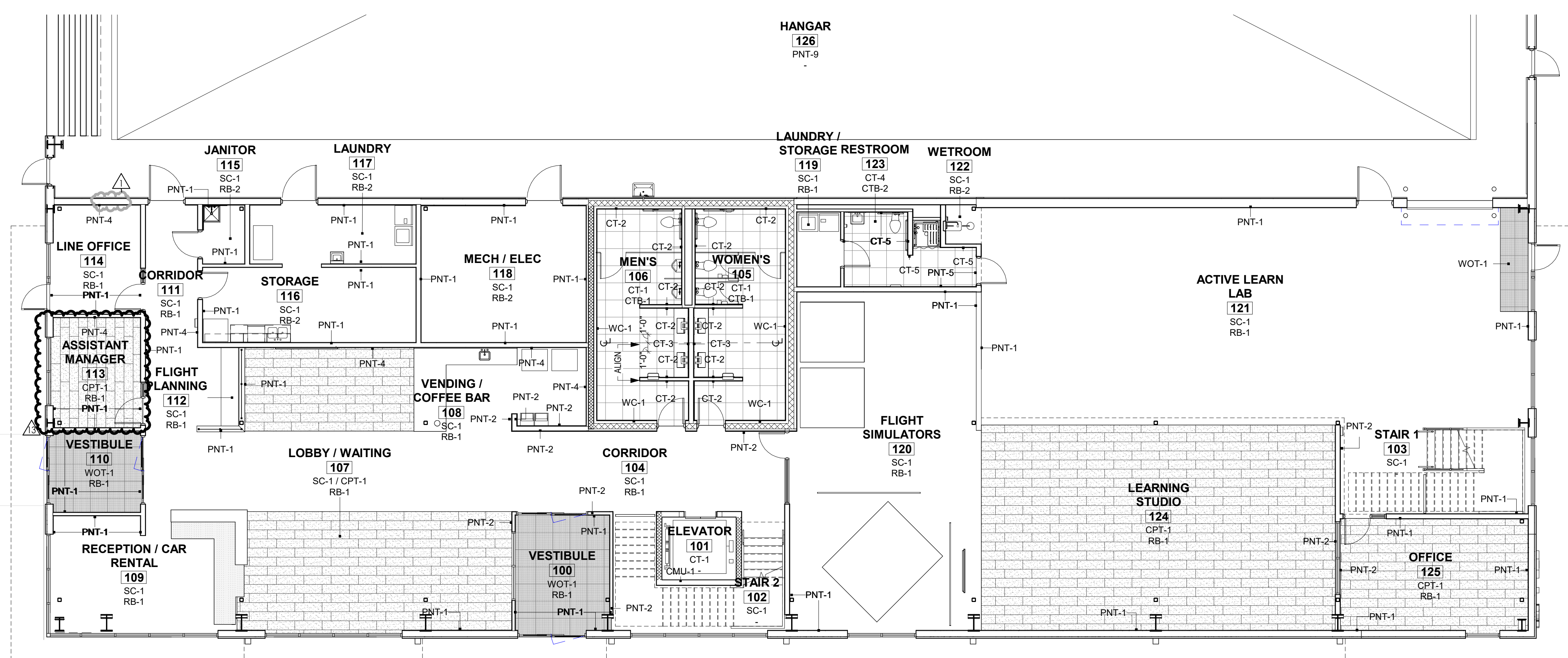
PROJECT NO: 2219
CAD DWG FILE: Lee's Summit - Hangar 2.rvt
DESIGNED BY: HM
DRAWN BY: HM
CHECKED BY: WAI
APPROVED BY: WAI
COPYRIGHT 2023

SHEET TITLE
FINISH SCHEDULE

4/10/2025 8:45:19 AM



FINISH PLAN - LEVEL 2
1/8" = 1'-0" 2



FINISH PLAN - LEVEL 1
1/8" = 1'-0" 1

FINISH TAG KEY

ROOM NAME	ROOM
FLOOR FINISH	CPT-1
BASE FINISH	B-1
WALL FINISH	PT-1



1627 MAIN STREET, SUITE 600
KANSAS CITY, MO 64108



1627 MAIN STREET, SUITE 100
KANSAS CITY, MO 64108



1301 BURLINGTON STREET
NORTH KANSAS CITY, MO 64116

LEE'S SUMMIT MUNICIPAL AIRPORT
LEE'S SUMMIT AIRPORT
EASTSIDE DEVELOPMENT
CITY PROJECT NO. - 47732472



LEES SUMMIT MUNICIPAL AIRPORT
LEES SUMMIT, MO

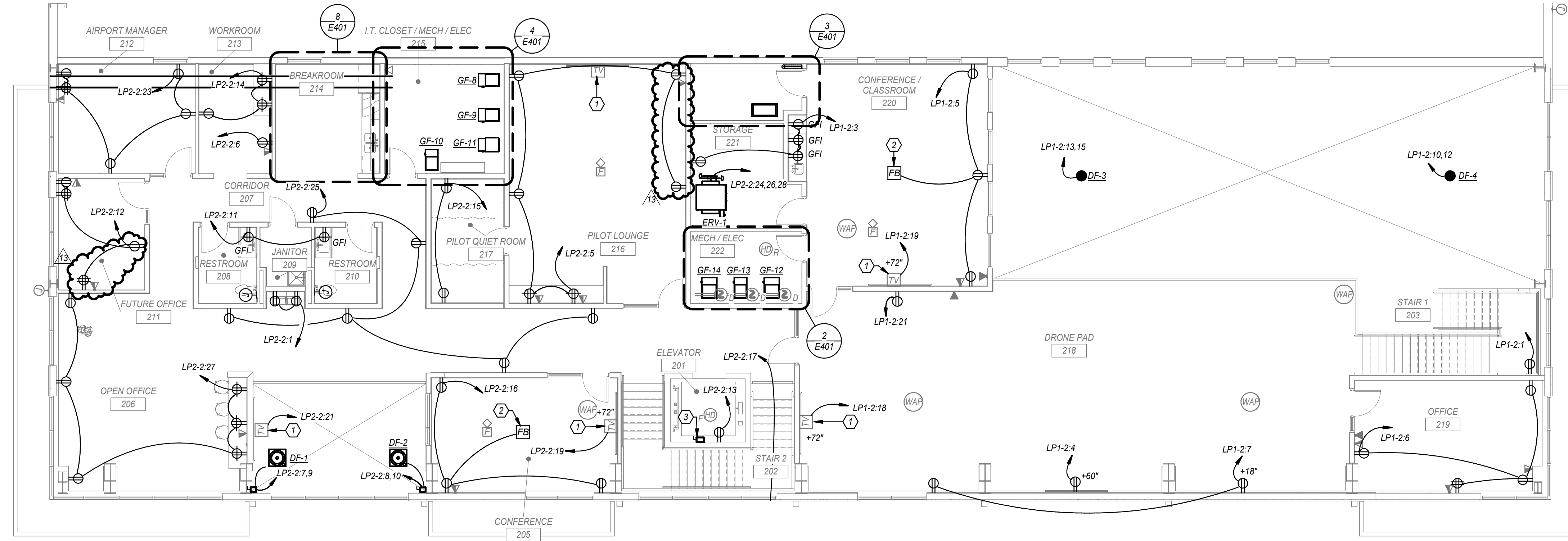
MARK	DATE	DESCRIPTION
13	4/11/25	PR 11
	1/24/24	REV-1

PROJECT NO: 2219
 CAD DWG FILE: Lee's Summit - Hangar 2.rvt
 DESIGNED BY: HM
 DRAWN BY: HM
 CHECKED BY: WAI
 APPROVED BY: WAI
 COPYRIGHT 2023

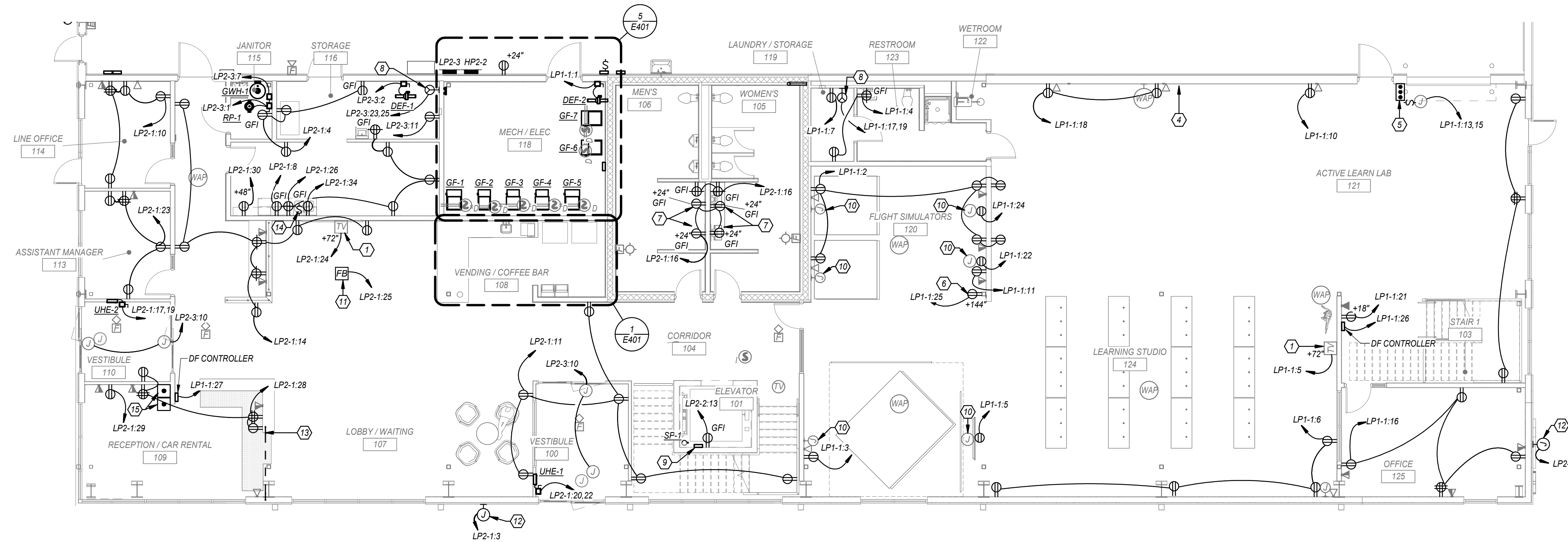
SHEET TITLE
FINISH FLOOR PLANS

ELECTRICAL KEYNOTES

- 1 PROVIDE TV OUTLET EQUAL TO LEGRAND TV3WTVSSW WITH CONDUIT TO ABOVE ACCESSIBLE CEILING PER AV INFRASTRUCTURE DETAIL. COORDINATE ALL DEVICE REQUIREMENTS WITH OWNER. REFER TO ARCHITECTURAL PLANS FOR EXACT MOUNTING HEIGHTS. REFER TO DETAIL B602 FOR ADDITIONAL INFORMATION.
- 2 COMBINATION POWER/DATA POKE-THRU FLOOR BOX. PROVIDE LEGRAND 6AT SERIES OR EQUIVALENT WITH COVER PLATE. TWO (2) DUPLEX RECEPTACLES, DATA ACTIVATIONS, AND AV CABLING FEED THROUGH. PROVIDE ONE (1) 3/4" CONDUIT FOR POWER AND ONE (1) 1/4" CONDUIT FOR DATA. REFER TO SYSTEMS PLANS FOR ADDITIONAL INFORMATION ON DATA CONDUIT ROUTING REQUIREMENTS.
- 3 NON-USED, ENCLOSED, EXTERNALLY OPERABLE MOTOR DISCONNECT CAPABLE OF BEING LOCKED IN THE OPEN POSITION. THIS SWITCH IS TO BE IN LINE OF SIGHT OF THE MOTOR CONTROLLER.
- 4 NOT USED.
- 5 PROVIDE START/STOP PUSH BUTTON FOR COILING OVERHEAD DOOR PER MANUFACTURER REQUIREMENT.
- 6 PROVIDE CORD AND REEL WITH TRIPLE TAP OUTLET EQUAL TO HUBBELL HELICORDITT REEL. SHALL BE MOUNTED TO STRUCTURAL COLUMN OR FROM STRUCTURE ABOVE AT 12'-0" A.F.
- 7 PROVIDE RECEPTACLE ABOVE CEILING FOR LOW VOLTAGE POWER TO FLUSH VALVES. PROVIDE RECEPTACLE FOR LAVATORIES PER MANUFACTURER.
- 8 PROVIDE NEMA 14-30R OR 10-30R RECEPTACLE WITH (3)#10 AND (1)#10 GROUND IN 3/4" CONDUIT FOR DRYER. REFER TO MANUFACTURER AND PROVIDE EXACT REQUIREMENTS.
- 9 SUMP PUMP ALARM PANEL. PROVIDE (1) 2" CONDUIT WITH FULL STRING FROM SUMP PUMP ALARM PANEL STUBBED INTO ELEVATOR PIT FOR ROUTING OF POWER AND CONTROL CABLE TO SUMP PUMP.
- 10 PROVIDE BOX WITH 1/4" CONDUIT WITH TWO (2) HDMI CABLES TO CEILING MOUNTED TV FOR HDMI CONNECTION. COORDINATE WITH OWNER AND ARCHITECT FOR ALL REQUIREMENTS PRIOR TO INSTALLATION. PROVIDE HDMI TERMINATION/PLATES AND ALL REQUIRED DEVICES FOR A COMPLETE SYSTEM. CEILING DEVICES SHALL BE MOUNTED ABOVE, AT THE STRUCTURE OR CEILING.
- 11 COMBINATION POWER/DATA FLOOR BOX. PROVIDE LEGRAND RFB SERIES OR EQUIVALENT WITH COVER PLATE. TWO (2) DUPLEX RECEPTACLES, DATA ACTIVATIONS, AND AV CABLING FEED THROUGH. REFER TO FLOOR BOX DETAIL AND SYSTEMS PLANS FOR ADDITIONAL INFORMATION.
- 12 PROVIDE POWER ROUGH IN FOR SIGN LIGHTING.
- 13 ROUTE CONDUIT BELOW FLOOR AND STUB UP IN CASEWORK. COORDINATE EXACT LOCATION WITH CASEWORK.
- 14 ROUTE CIRCUIT FOR GARBAGE DISPOSAL OUTLET THROUGH TOGGLE SWITCH.
- 15 PROVIDE 1" CONDUIT AND JUNCTION BOX FOR (2) DESK MOUNTED PUSH BUTTONS. CONDUIT SHALL BE ROUTED BACK TO ACCESS CONTROLS FOR LOW VOLTAGE WIRING. COORDINATE ALL REQUIREMENTS WITH ACCESS CONTROLS PROVIDER AND OWNER.



POWER SECOND FLOOR PLAN 2
1/8" = 1'-0"



POWER FIRST FLOOR PLAN 1
1/8" = 1'-0"



1627 MAIN STREET, SUITE 600
KANSAS CITY, MO 64108

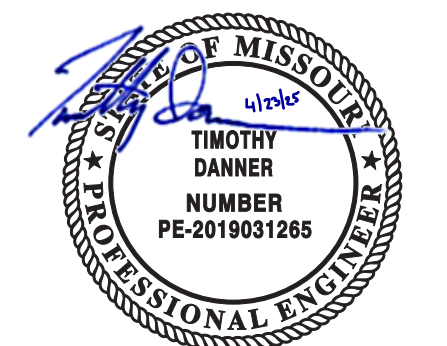


1627 MAIN STREET, SUITE 100
KANSAS CITY, MO 64108



1301 BURLINGTON STREET
NORTH KANSAS CITY, MO 64116

LEE'S SUMMIT MUNICIPAL AIRPORT
LEE'S SUMMIT, MISSOURI
EASTSIDE DEVELOPMENT
CITY PROJECT NO. - 47732472



03-29-2024

LEE'S SUMMIT MUNICIPAL AIRPORT AUTHORITY
LEE'S SUMMIT, MO

MARK	DATE	DESCRIPTION
13	4/11/25	PR 11
12	4/4/25	PR 10
11	4/2/25	PR 09

PROJECT NO.:	022-04268
CAD DWG FILE:	Lee's Summit - Hangar 2.rvt
DESIGNED BY:	SH
DRAWN BY:	CH
CHECKED BY:	AF
APPROVED BY:	TWO
COPYRIGHT	2023

SHEET TITLE

POWER FLOOR PLANS

E201

SHEET OF

4/10/2025 9:14:15 AM

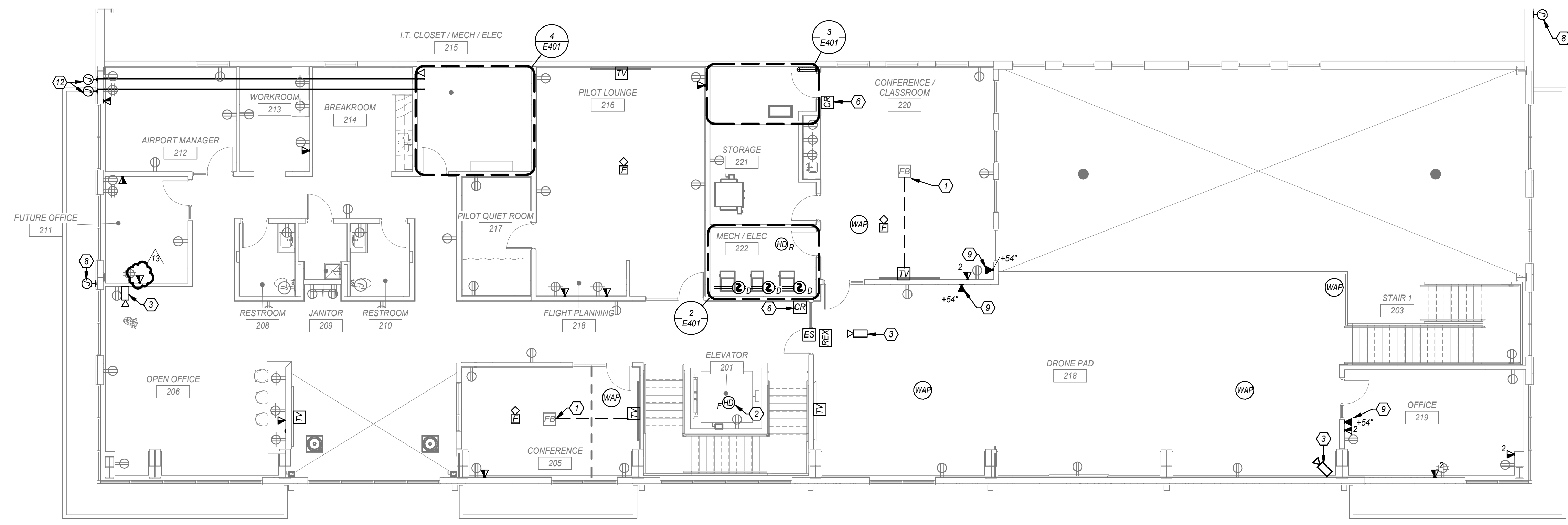
4/10/2025 9:14:16 AM

GENERAL SHEET NOTES

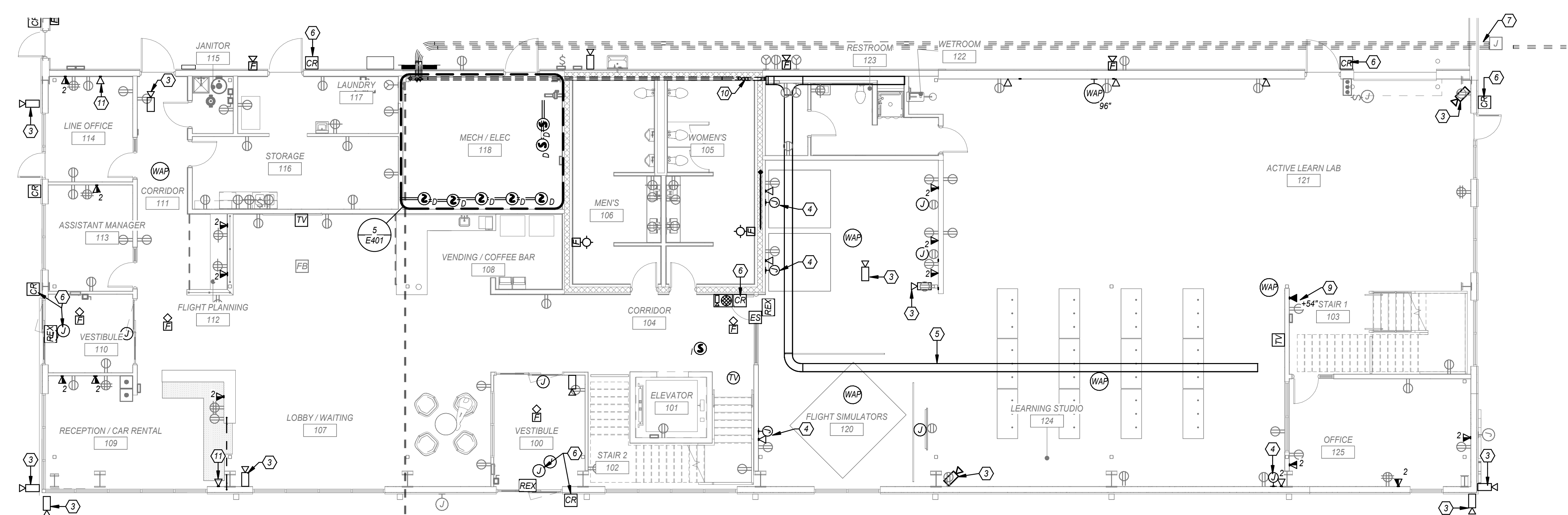
- A. WHERE TELEDATA OUTLET SYMBOL IS SHOWN PROVIDE BACK BOX AND CONDUIT ROUGH IN TO ABOVE ACCESSIBLE CEILING. REFER TO COMMUNICATION ROUGH-IN DETAIL FOR ADDITIONAL INFORMATION.
- B. COORDINATE ALL TELECOMMUNICATIONS DEVICE LOCATION AND MOUNTING HEIGHTS WITH OWNER/ARCHITECT PRIOR TO INSTALLATION.
- C. PROVIDE TRACER WIRE WITH PULL STRINGS.

ELECTRICAL KEYNOTES

- 1. PROVIDE 1-1/4" CONDUIT FROM FLOOR BOX/POKE-THRU TO TV OUTLET LOCATION FOR DATA AND AV CABLING.
- 2. HEAT DETECTOR IN ELEVATOR SHAFT WITHIN 3FT OF SPRINKLER HEAD. REFER TO ELEVATOR INTERLOCK WITH FIRE ALARM DETAIL FOR ADDITIONAL INFORMATION. COORDINATE LOCATION WITH SPRINKLER PROVIDER.
- 3. PROVIDE JUNCTION BOX AND 3/4" CONDUIT ROUGH IN FOR CAMERA. ROUTE CONDUIT BACK TO IT ROOM. COORDINATE EXACT LOCATION AND REQUIREMENTS WITH OWNER AND SECURITY PROVIDER. IN AREAS WITH NO ABOVE CEILING ROUTE CONDUIT HIGH AND TIGHT TO STRUCTURE ABOVE.
- 4. PROVIDE BOX WITH 1-1/4" CONDUIT WITH TWO (2) HDMI CABLES TO CEILING MOUNTED TV FOR HDMI CONNECTION. COORDINATE WITH OWNER AND ARCHITECT FOR ALL REQUIREMENTS PRIOR TO INSTALLATION. PROVIDE HDMI TERMINATION PLATES AND ALL REQUIRED DEVICES FOR A COMPLETE SYSTEM. CEILING DEVICES SHALL BE MOUNTED ABOVE, AT THE STRUCTURE OR CEILING.
- 5. 2"X12" WIRE MESH CABLE TRAY ABOVE ACCESSIBLE CEILING.
- 6. PROVIDE POWER ROUGH IN FOR CARD READER. REFER TO ACCESS CONTROL DETAIL FOR ADDITIONAL INFORMATION.
- 7. (2)-4" EMPTY CONDUITS ROUTED BELOW GRADE FROM TELECOM JUNCTION BOX AND STUBBED UP IN ELECTRICAL ROOM. CAP CONDUITS WITH PULL STRINGS. COORDINATE EXACT LOCATION OF JUNCTION BOX WITH TELECOM SERVICE PROVIDER. PROVIDE TRACER WIRE WITH PULL STRINGS. ROUTE CONDUITS TO SERVICE PROVIDER DEMARC LOCATION. COORDINATE LOCATION WITH SERVICE PROVIDER.
- 8. MOUNT SINGLE BOX AT 15'-0" A.F.G. WITH 1" CONDUIT WITH CAT 6A ROUTED WITHIN STRUCTURE FOR OWNER SUPPLIED EXTERIOR WIFI BOOSTER EQUAL TO CISCO CATALYST 9166 SERIES WITH BRACKET AND ARM. REFER TO MANUFACTURER FOR MOUNTING REQUIREMENTS. PROVIDE BLOCKING AS REQUIRED. COORDINATE EXACT LOCATION WITH OWNER AND ARCHITECT.
- 9. PROVIDE DOUBLE GANG BOX WITH 4" LUG SPACING MATCHING PHONE HARDWARE. REFER TO PHONE MANUFACTURER FOR EXACT MOUNTING REQUIREMENTS. PHONE OWNER SUPPLIED. CONTRACTOR INSTALLED. COORDINATE LOCATION WITH OWNER AND ARCHITECT.
- 10. ROUTE (2)-4" EMPTY CONDUIT TO ABOVE CEILING ON FIRST FLOOR BELOW AND PROVIDE FIRE RATED PENETRATION THRU FIRE WALL. CONDUIT TO STUB OUT WALL TO CABLE TRAY ABOVE CEILING ON FIRST FLOOR.
- 11. ROUTE (1)-1" EMPTY CONDUIT WITH PULL STRINGS TO ROOF FOR COAX CABLING TO ANTENNA. PROVIDE COAX OUTLET WHERE SHOWN. COORDINATE EXACT LOCATION AND REQUIREMENTS WITH OWNER.
- 12. MOUNT SINGLE BOX AT 135'-0" A.F.G. WITH 1" CONDUIT ROUTED TO LOCATIONS SHOWN ON FIRST FLOOR FOR OWNER RELOCATED ANTENNA. PROVIDE BLOCKING AS REQUIRED. COORDINATE EXACT LOCATION WITH OWNER. PROVIDE GROUNDING PER NEC.



SYSTEMS SECOND FLOOR PLAN 2 1/8" = 1'-0"



SYSTEMS FIRST FLOOR PLAN 1 1/8" = 1'-0"



1627 MAIN STREET, SUITE 600
KANSAS CITY, MO 64108



1627 MAIN STREET, SUITE 100
KANSAS CITY, MO 64108



1301 BURLINGTON STREET
NORTH KANSAS CITY, MO 64116

LEE'S SUMMIT MUNICIPAL AIRPORT
LEE'S SUMMIT, MISSOURI
 EASTSIDE DEVELOPMENT
 CITY PROJECT NO. - 47732472



03-29-2024

LEES SUMMIT MUNICIPAL AIRPORT AUTHORITY
LEES SUMMIT, MO

MARK	DATE	DESCRIPTION
13	4/11/25	PR 11
12	4/4/25	PR 10
11	4/2/25	PR 09
8	11/8/24	PR-07

PROJECT NO:	022-04268
CAD DWG FILE:	Lee's Summit - Hangar 2.rvt
DESIGNED BY:	SH
DRAWN BY:	OH
CHECKED BY:	AF
APPROVED BY:	TWO
COPYRIGHT	2023

SHEET TITLE
SYSTEMS FLOOR PLANS

E301
SHEET OF