

RE: P241241-03 - Roof - MH Lot 201

Site Information:

Project Customer: Clayton Properties Project Name: Westport - Modern Prairie
Lot/Block: 201 Subdivision: Highland Meadows

Model:

Address: 1059 SW Fiord Dr

City: Lee's Summit

State: MO

General Truss Engineering Criteria & Design Loads (Individual Truss Design Drawings Show Special Loading Conditions):

Design Code: IRC2018/TPI2014

Wind Code: ASCE 7-16

Wind Speed: 115 mph

Roof Load: 45.0 psf

Mean Roof Height (feet): 35

Design Program: MiTek 20/20 8.6

Design Method: MWFRS (Envelope)/C-C hybrid Wind ASCE 7-16

Floor Load: N/A psf

Exposure Category: C

MiTek, Inc.

16023 Swingley Ridge Rd.
Chesterfield, MO 63017
314.434.1200

No.	Seal#	Truss Name	Date
1	I72404067	A13	3/31/25
2	I72404068	A19	3/31/25

The truss drawing(s) referenced above have been prepared by
MiTek USA, Inc. under my direct supervision based on the parameters
provided by Premier Building Supply (Springhill, KS)20300 W 207th Street.

Truss Design Engineer's Name: Lu, Jie

My license renewal date for the state of Missouri is December 31, 2026.

IMPORTANT NOTE: The seal on these truss component designs is a certification that the engineer named is licensed in the jurisdiction(s) identified and that the designs comply with ANSI/TPI 1. These designs are based upon parameters shown (e.g., loads, supports, dimensions, shapes and design codes), which were given to MiTek or TRENCO. Any project specific information included is for MiTek's or TRENCO's customers file reference purpose only, and was not taken into account in the preparation of these designs. MiTek or TRENCO has not independently verified the applicability of the design parameters or the designs for any particular building. Before use, the building designer should verify applicability of design parameters and properly incorporate these designs into the overall building design per ANSI/TPI 1, Chapter 2.



March 31, 2025

Job	Truss	Truss Type	Qty	Ply	Roof - MH Lot 201
P241241-03	A13	Hip	1	1	Job Reference (optional)
					I72404067

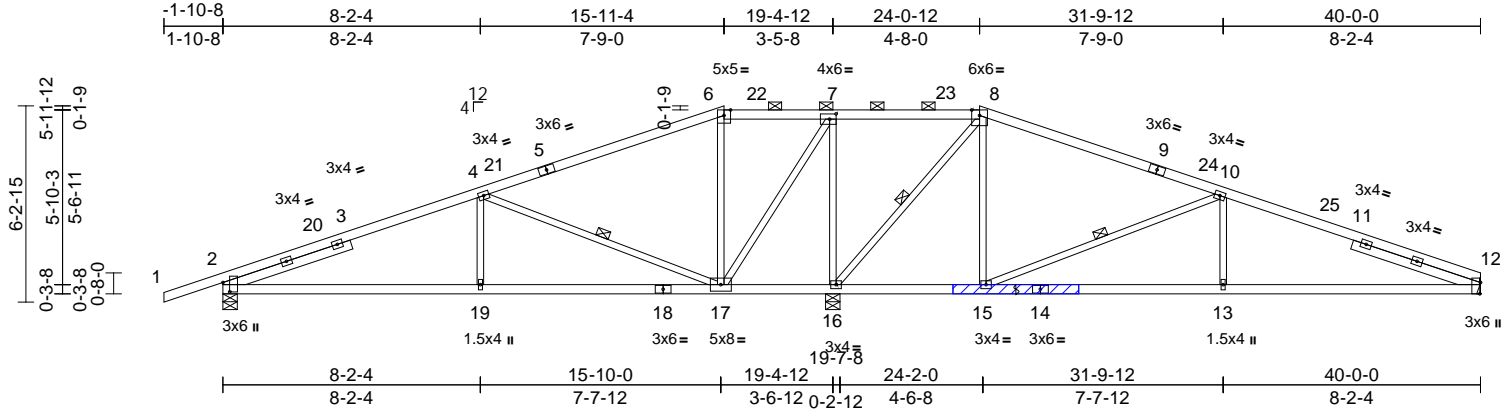
Premier Building Supply (Springhill, KS), Spring Hills, KS - 66083,

Run: 8.63 S Sep 26 2024 Print: 8.630 S Sep 26 2024 MiTek Industries, Inc. Mon Mar 31 12:27:20

Page: 1

REPAIR:
BREAK IN MEMBER 14-15 LOCATED AT MIDPOINT.

ID:cT49EH6?NogLjB9FCHaGRnzWisZ-RfC?PsB70Hq3NSgPqnL8w3ulTXbGKWrCdoi7J4zJC?f



APPLY 2 X 4 X 4' SPF/DF/SP NO.2 SCAB(S) TO EACH FACE OF TRUSS CENTERED ON DAMAGE. ATTACH WITH (0.131" X 3") NAILS PER THE FOLLOWING NAIL SCHEDULE: 2 X 4'S - 2 ROWS: SPACED @ 4" O.C. STAGGER NAIL SPACING FROM FRONT FACE AND BACK FACE FOR A NET 2" O.C SPACING IN THE TRUSS. USE 2" MEMBER END DISTANCE.

Scale = 1:73.3

Plate Offsets (X, Y): [2:0-3-9,0-2-9], [7:0-2-8,0-2-0], [12:0-4-5,Edge]

Loading	(psf)	Spacing	2-0-0	CSI		DEFL	in	(loc)	l/defl	L/d	PLATES	GRIP
TCLL (roof)	25.0	Plate Grip DOL	1.15	TC	0.88	Vert(LL)	-0.11	12-13	>999	240	MT20	244/190
TCDL	10.0	Lumber DOL	1.15	BC	0.66	Vert(CT)	-0.24	12-13	>999	180		
BCLL	0.0	Rep Stress Incr	YES	WB	0.92	Horz(CT)	0.05	12	n/a	n/a		
BCDL	10.0	Code	IRC2018/TPI2014	Matrix-S							Weight: 179 lb	FT = 20%

LUMBER

TOP CHORD 2x4 SP No.2
BOT CHORD 2x4 SP No.2
WEBS 2x3 SPF No.2
SLIDER Left 2x4 SP No.2 -- 4-3-6, Right 2x4 SP No.2 -- 4-3-6

BRACING

TOP CHORD Structural wood sheathing directly applied or 2-2-0 oc purlins, except 2-0-0 oc purlins (6-0-0 max.): 6-8.
BOT CHORD Rigid ceiling directly applied or 6-0-0 oc bracing.

WEBS 1 Row at midpt 4-17, 8-16, 10-15
REACTIONS (size) 2=0-5-8, 12=Mechanical, 16=0-5-8
Max Horiz 2=116 (LC 16)
Max Uplift 2=-261 (LC 8), 12=-194 (LC 9), 16=-332 (LC 8)
Max Grav 2=841 (LC 25), 12=762 (LC 26), 16=2225 (LC 1)

FORCES

(lb) - Maximum Compression/Maximum Tension
TOP CHORD 1-2=0/18, 2-4=-1197/347, 4-6=-97/268, 6-7=-10/232, 7-8=0/751, 8-10=-280/209, 10-12=-1360/387
BOT CHORD 2-19=-315/1028, 17-19=-315/1028, 16-17=-749/223, 15-16=-91/165, 13-15=-279/1207, 12-13=-279/1207
WEBS 4-19=0/351, 4-17=-1124/331, 6-17=-421/161, 8-16=-1233/292, 8-15=-47/542, 10-15=-1127/337, 10-13=0/350, 7-16=-1198/359, 7-17=-250/1126

NOTES

1) Unbalanced roof live loads have been considered for this design.

- Wind: ASCE 7-16; Vult=115mph (3-second gust) Vasd=91mph; TCDL=6.0psf; BCDL=6.0psf; h=35ft; Ke=1.00; Cat. II; Exp C; Enclosed; MWFRS (envelope) exterior zone and C-C Exterior(2E) -1-10-8 to 3-1-8, Interior (1) 3-1-8 to 15-11-4, Exterior(2R) 15-11-4 to 23-0-2, Interior (1) 23-0-2 to 24-0-12, Exterior(2R) 24-0-12 to 31-1-10, Interior (1) 31-1-10 to 40-0-0 zone; cantilever left and right exposed; end vertical left and right exposed; C-C for members and forces & MWFRS for reactions shown; Lumber DOL=1.60 plate grip DOL=1.60
- Provide adequate drainage to prevent water ponding.
- All plates are 3x4 MT20 unless otherwise indicated.
- This truss has been designed for a 10.0 psf bottom chord live load nonconcurrent with any other live loads.
- Bearings are assumed to be: Joint 2 SP No.2 crushing capacity of 565 psi, Joint 16 SP No.2 crushing capacity of 565 psi.
- Refer to girder(s) for truss to truss connections.
- Provide mechanical connection (by others) of truss to bearing plate capable of withstanding 261 lb uplift at joint 2, 332 lb uplift at joint 16 and 194 lb uplift at joint 12.
- This truss is designed in accordance with the 2018 International Residential Code sections R502.11.1 and R802.10.2 and referenced standard ANSI/TPI 1.
- Graphical purlin representation does not depict the size or the orientation of the purlin along the top and/or bottom chord.

LOAD CASE(S) Standard



March 31, 2025

WARNING - Verify design parameters and READ NOTES ON THIS AND INCLUDED MITEK REFERENCE PAGE MII-7473 rev. 1/2/2023 BEFORE USE.

Design valid for use only with MiTek® connectors. This design is based only upon parameters shown, and is for an individual building component, not a truss system. Before use, the building designer must verify the applicability of design parameters and properly incorporate this design into the overall building design. Bracing indicated is to prevent buckling of individual truss web and/or chord members only. Additional temporary and permanent bracing is always required for stability and to prevent collapse with possible personal injury and property damage. For general guidance regarding the fabrication, storage, delivery, erection and bracing of trusses and truss systems, see **ANSI/TPI1 Quality Criteria, and DSB-22** available from Truss Plate Institute (www.tpinst.org) and **BCSI Building Component Safety Information** available from the Structural Building Component Association (www.sbcsccomponents.com)

MiTek®

16023 Swingley Ridge Rd.
Chesterfield, MO 63017
314.434.1200 / MiTek-US.com

Premier Building Supply (Springhill, KS), Spring Hills, KS - 66083, Run: 8.63 S Sep 26 2024 Print: 8.630 S Sep 26 2024 MiTek Industries, Inc. Mon Mar 31 12:27:21 Page: 1
REPAIR: ID:QdSQVLBmyeRVR6cPZYhgzZwISt-RfC?PsB70hq3NSgPqnL8w3uITXbGKWKRCDol7J4zJC?f
BREAK IN MEMBER 1-10 LOCATED 2-0-0 FROM JOINT 10.

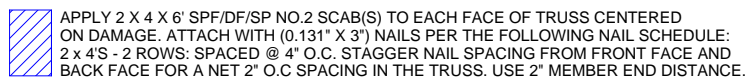


Plate Offsets (X, Y): [1:0-3-8,Edge]

LUMBER
TOP CHORD 2x4 SP No.2
BOT CHORD 2x4 SP No.2
WEBS 2x3 SPF No.2
SLIDER Left 2x4 SP No.2 -- 2-11-15

BRACING
TOP CHORD Structural wood sheathing directly applied or 4-2-5 oc purlins, except end verticals, and 2-0-0 oc purlins (4-9-4 max.): 4-6.
BOT CHORD Rigid ceiling directly applied or 6-9-14 oc bracing.

WEBS 1 Row at midpt 5-7

REACTIONS (size) 1= Mechanical, 7=0-5-8
Max Horiz 1=169 (LC 11)
Max Uplift 1=-197 (LC 8), 7=-210 (LC 8)
Max Grav 1=933 (LC 1), 7=933 (LC 1)

FORCES (lb) - Maximum Compression/Maximum Tension

TOP CHORD 1-3=-1891/593, 3-4=-1653/520,
4-5=-1208/414, 5-6=-87/79, 6-7=-142/98

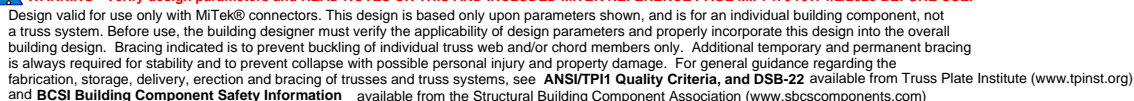
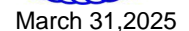
BOT CHORD 1-10=-726/1705, 8-10=-516/1354,
7-8=-415/1051

WEBS 4-10=-92/360, 4-8=-207/135, 5-8=-10/371,
5-7=-1264/442, 3-10=-244/232

- 4) This truss has been designed for a 10.0 psf bottom chord live load nonconcurrent with any other live loads.
- 5) Bearings are assumed to be: , Joint 7 SP No.2 crushing capacity of 565 psi.
- 6) Refer to girder(s) for truss to truss connections.
- 7) Provide mechanical connection (by others) of truss to bearing plate capable of withstanding 197 lb uplift at joint 1 and 210 lb uplift at joint 7.
- 8) This truss is designed in accordance with the 2011 International Residential Code sections R502.11.1 and R802.10.2 and referenced standard ANSI/TPI 1.
- 9) Graphical purlin representation does not depict the size or the orientation of the purlin along the top and/or bottom chord.

LOAD CASE(S) Standard

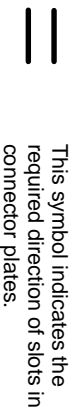
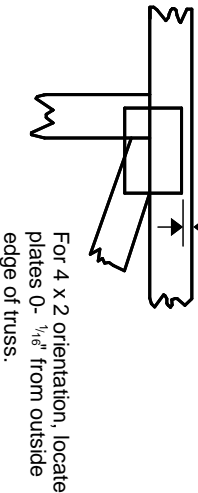
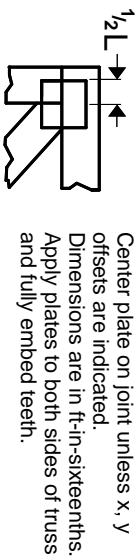
- 1) Unbalanced roof live loads have been considered for this design.
- 2) Wind: ASCE 7-16; Vult=115mph (3-second gust)
 Vasd=91mph; TCDL=6.0psf; BCDL=6.0psf; h=35ft;
 Ke=1.00; Cat. II; Exp C; Enclosed; MWFRS (envelope)
 exterior zone and C-C Exterior(2E) 0-0-1 to 5-0-1,
 Interior (1) 5-0-1 to 9-11-4, Exterior(2R) 9-11-4 to 17-0-2,
 Interior (1) 17-0-2 to 20-8-12 zone; cantilever left and
 right exposed ; end vertical left and right exposed;C-C
 for members and forces & MWFRS for reactions shown;
 Lumber DOL=1.60 plate grip DOL=1.60
- 3) Provide adequate drainage to prevent water ponding.



16023 Swingley Ridge Rd.
Chesterfield, MO 63017
314.434.1200 / MiTek-UIS.com

Symbols

PLATE LOCATION AND ORIENTATION



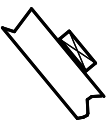
* Plate location details available in MITek software or upon request.

PLATE SIZE

4 X 4

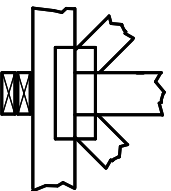
The first dimension is the plate width measured perpendicular to slots. Second dimension is the length parallel to slots.

LATERAL BRACING LOCATION



Indicated by symbol shown and/or by text in the bracing section of the output. Use T or I bracing if indicated.

BEARING

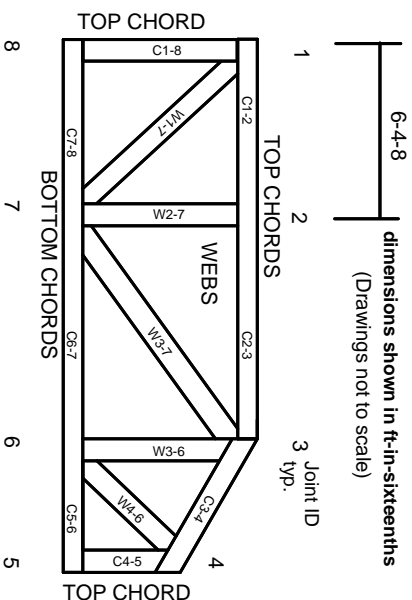


Indicates location where bearings (supports) occur. Icons vary but reaction section indicates joint number/letter where bearings occur. Min size shown is for crushing only.

Industry Standards:

ANSI/TP1: National Design Specification for Metal Plate Connected Wood Truss Construction.
DSB-22: Design Standard for Bracing.
BCSI: Building Component Safety Information, Guide to Good Practice for Handling, Installing, Restraining & Bracing of Metal Plate Connected Wood Trusses.

Numbering System



JOINTS ARE GENERALLY NUMBERED/LETTERED CLOCKWISE AROUND THE TRUSS STARTING AT THE JOINT FARTHEST TO THE LEFT.

CHORDS AND WEBS ARE IDENTIFIED BY END JOINT NUMBERS/LETTERS.

Product Code Approvals

ICC-ES Reports:

ESR-1988, ESR-2362, ESR-2685, ESR-3282
ESR-4722, ESL-1388

Design General Notes

Trusses are designed for wind loads in the plane of the truss unless otherwise shown.

Lumber design values are in accordance with ANSI/TP1 1 section 6.3. These truss designs rely on lumber values established by others.

© 2023 MITek® All Rights Reserved

MITek®

MITek Engineering Reference Sheet: MII-7473 rev. 1/2/2023

General Safety Notes

Failure to Follow Could Cause Property Damage or Personal Injury

1. Additional stability bracing for truss system, e.g. diagonal or X-bracing, is always required. See BCSI.
2. Truss bracing must be designed by an engineer. For wide truss spacing, individual lateral braces themselves may require bracing, or alternative Tor I bracing should be considered.
3. Never exceed the design loading shown and never stack materials on inadequately braced trusses.
4. Provide copies of this truss design to the building designer, erection supervisor, property owner and all other interested parties.
5. Cut members to bear tightly against each other.
6. Place plates on each face of truss at each joint and embed fully. Knots and wane at joint locations are regulated by ANSI/TP1 1.
7. Design assumes trusses will be suitably protected from the environment in accord with ANSI/TP1 1.
8. Unless otherwise noted, moisture content of lumber shall not exceed 19% at time of fabrication.
9. Unless expressly noted, this design is not applicable for use with fire retardant, preservative treated, or green lumber.
10. Camber is a non-structural consideration and is the responsibility of truss fabricator. General practice is to camber for dead load deflection.
11. Plate type, size, orientation and location dimensions indicated are minimum plating requirements.
12. Lumber used shall be of the species and size, and in all respects, equal to or better than that specified.
13. Top chords must be sheathed or purlins provided at spacing indicated on design.
14. Bottom chords require lateral bracing at 10 ft. spacing, or less, if no ceiling is installed, unless otherwise noted.
15. Connections not shown are the responsibility of others.
16. Do not cut or alter truss member or plate without prior approval of an engineer.
17. Install and load vertically unless indicated otherwise.
18. Use of green or treated lumber may pose unacceptable environmental, health or performance risks. Consult with project engineer before use.
19. Review all portions of this design (front, back, words and pictures) before use. Reviewing pictures alone is not sufficient.
20. Design assumes manufacture in accordance with ANSI/TP1 1 Quality Criteria.
21. The design does not take into account any dynamic or other loads other than those expressly stated.