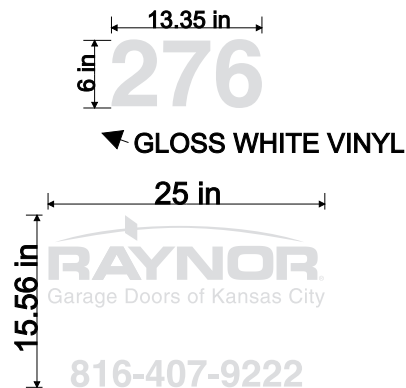


Sign Package

Flush Mounted

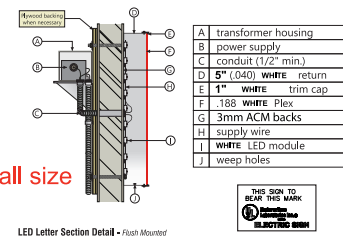
1st Surface Graphics (QTY: 1 ea)



REMOVE ALL EXISTING WINDOW PERF, INSTALL NEW AS SHOWN

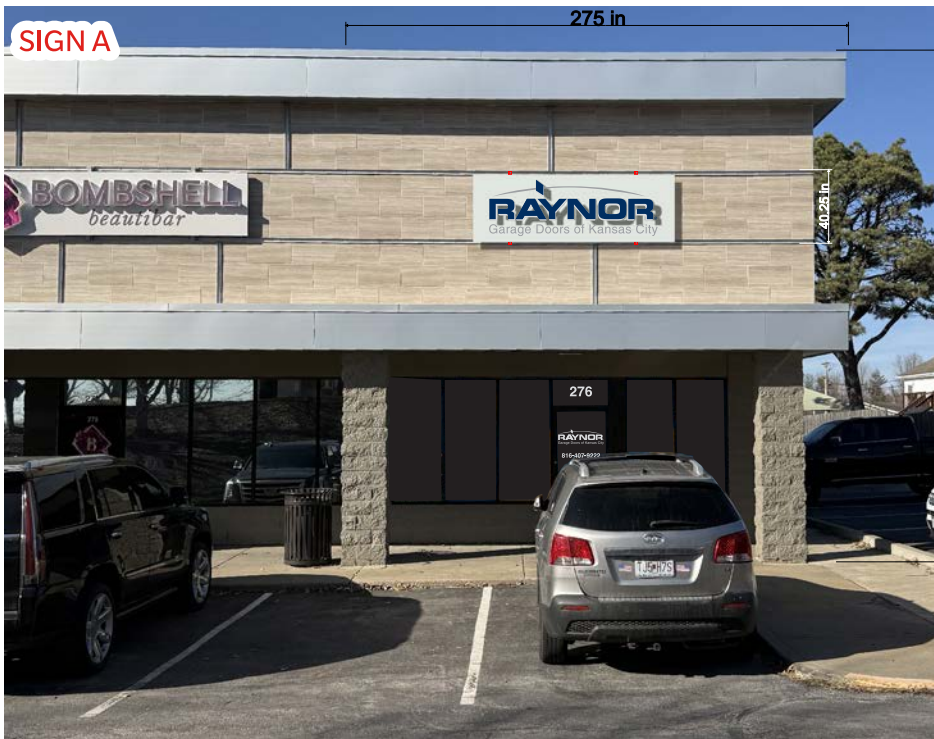
2" deep alum pan face, painted PMS cool gray 1

"garage doors" and "swoosh" to be vinyl overlay due to small size



PLEASE CONFIRM

PANTONE C 04
COOL M 02
GRAY 1 Y 04
K 08



Client: Raynor Garage Doors of KC
Drawing Title: Sign Package
Jobsite Address: 276 SW Blue PKWY
Lee's Summit, MO 64063
Design Revision: 2
Date: 04/04/25
Sheet: 1 of 1
Designer: J Knipp
Account Rep: M Ryan

Design Approval: _____ Date: ____/____/____

Lease Height: 280"
Lease Width: 275"
Overall Space: 534.7 sq. ft.
Signage: 30 sq. ft. (5.8%)

A

Lease Height: 280"
Lease Width: 466"
Overall Space: 890 sq. ft.
Signage: 30 sq. ft. (3.4%)

B



11235 Mastin ST., STE 101
Overland Park, KS 6210
913.469.1500
913.469.1508

This drawing is property of ForeRunner Signs & Graphics and all rights to its use for reproduction are reserved by ForeRunner Signs & Graphics

Per City Criteria:
10% of building facade