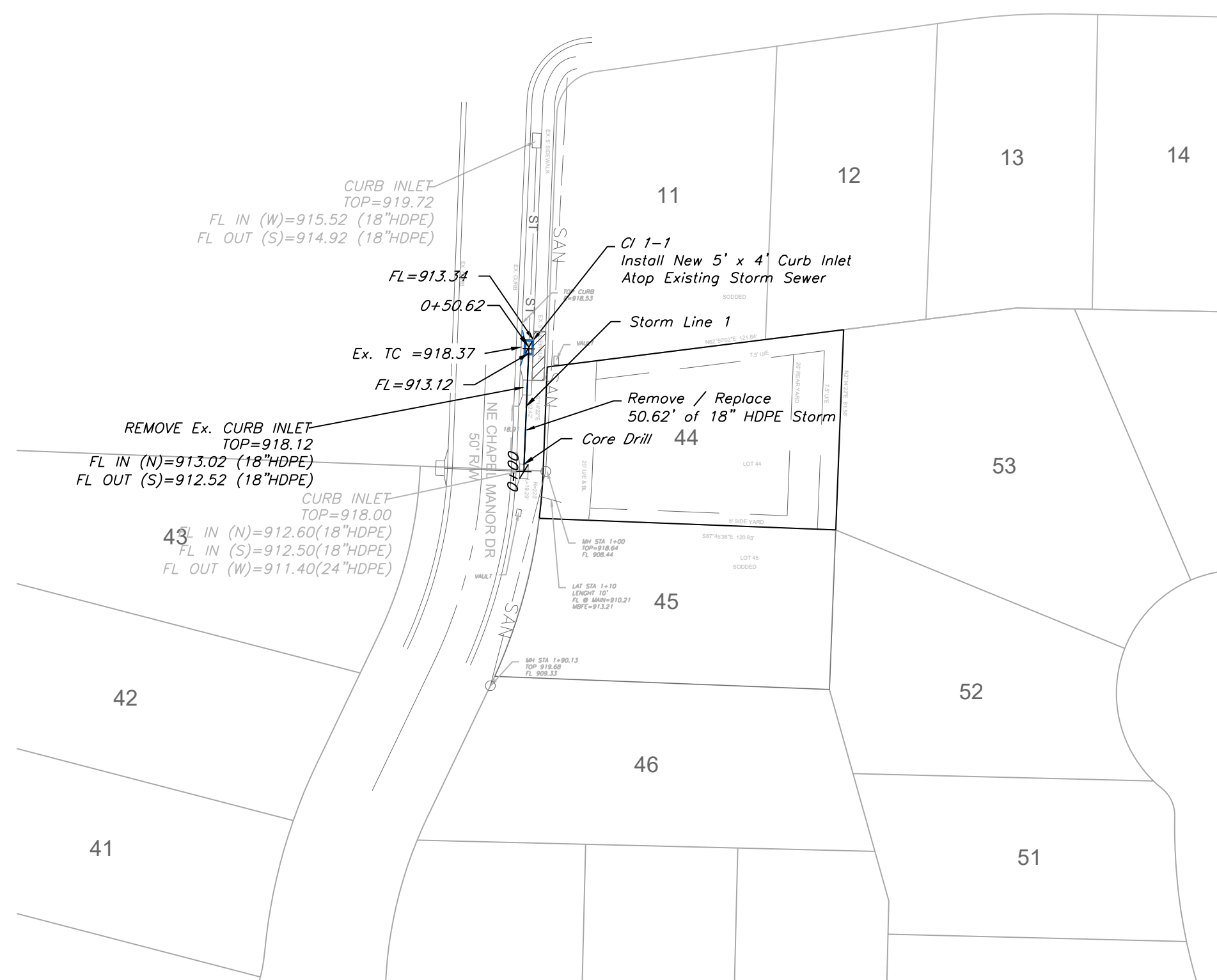
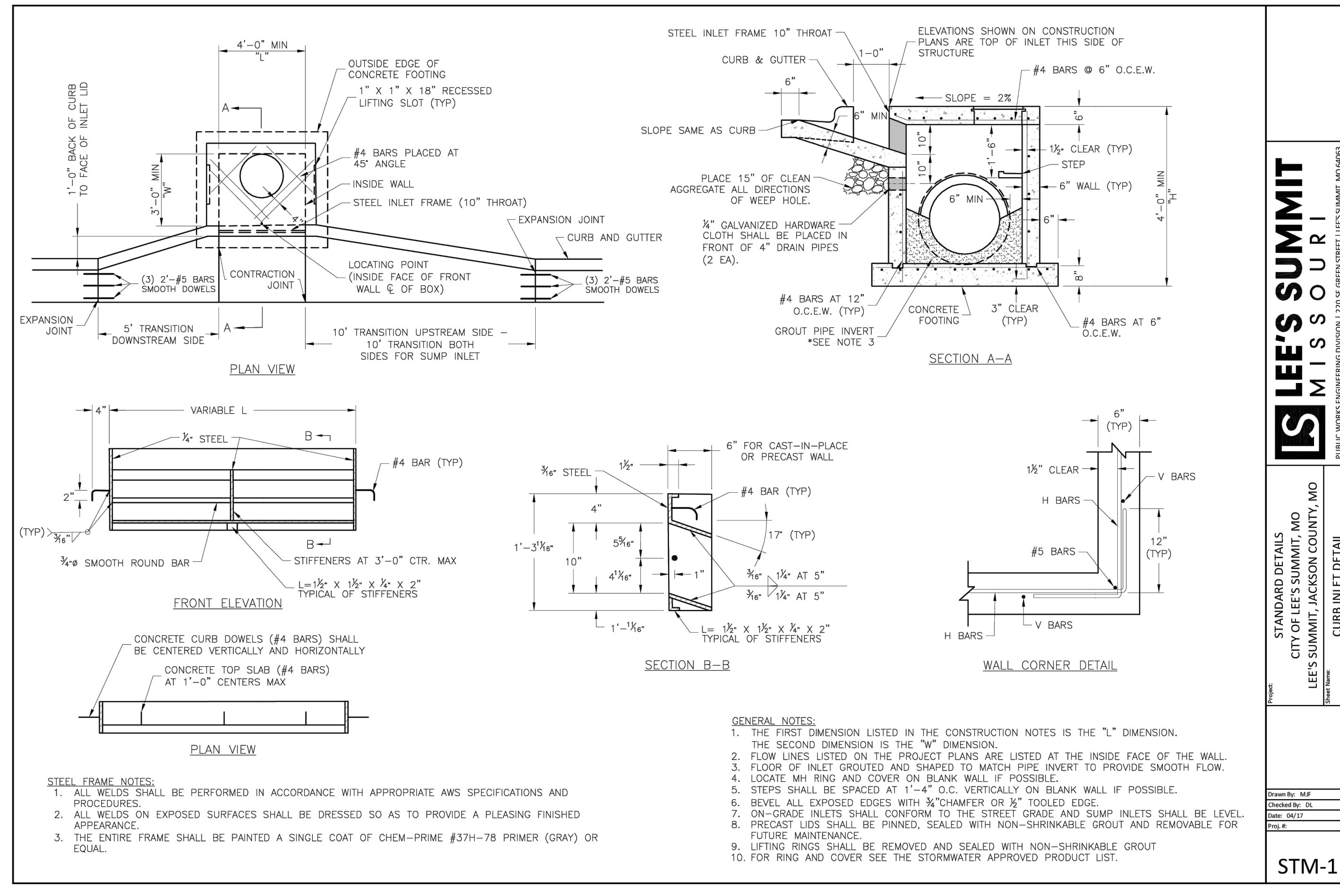
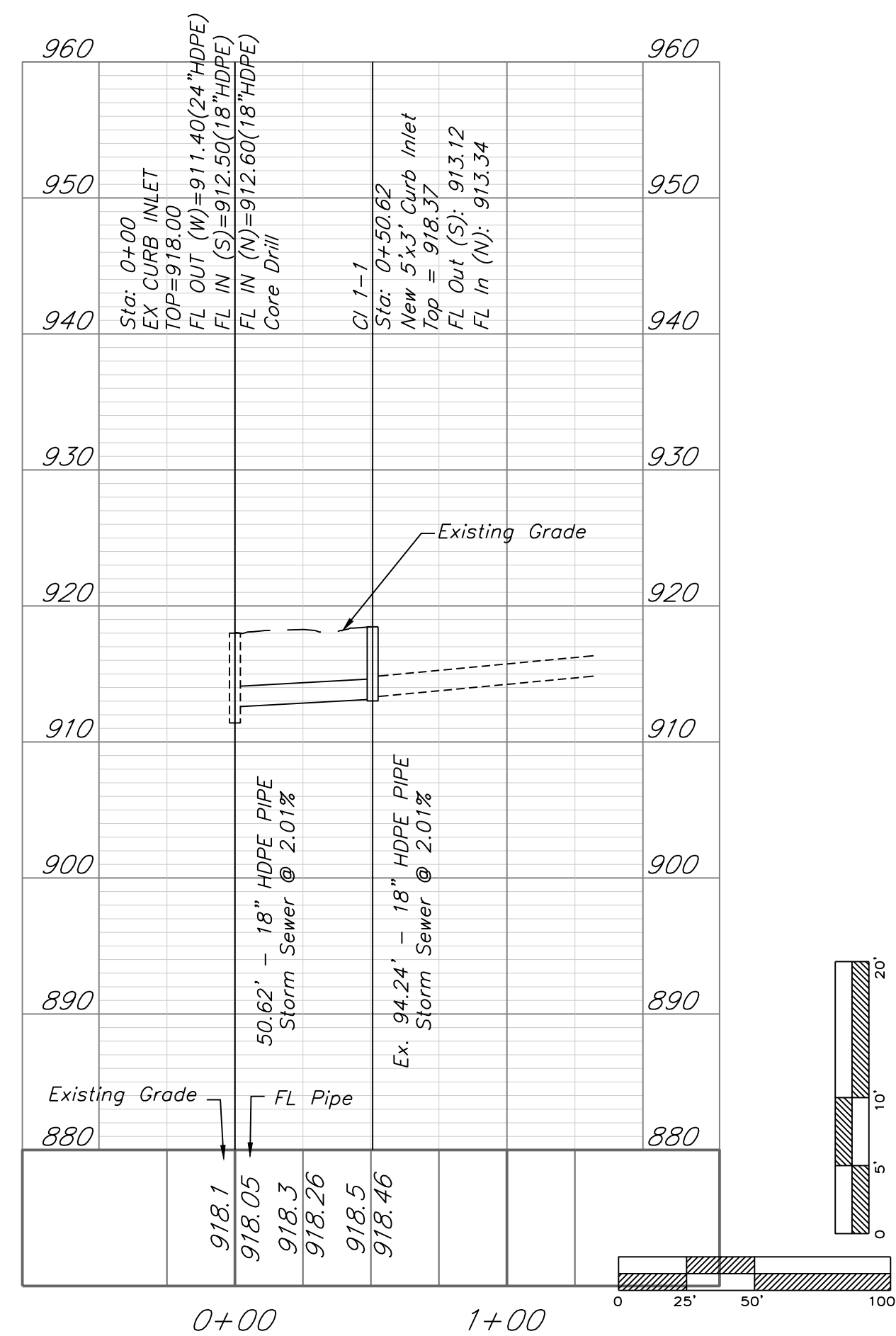


Storm Sewer Plan
SCALE: 1" = 50'



STORM LINE 1



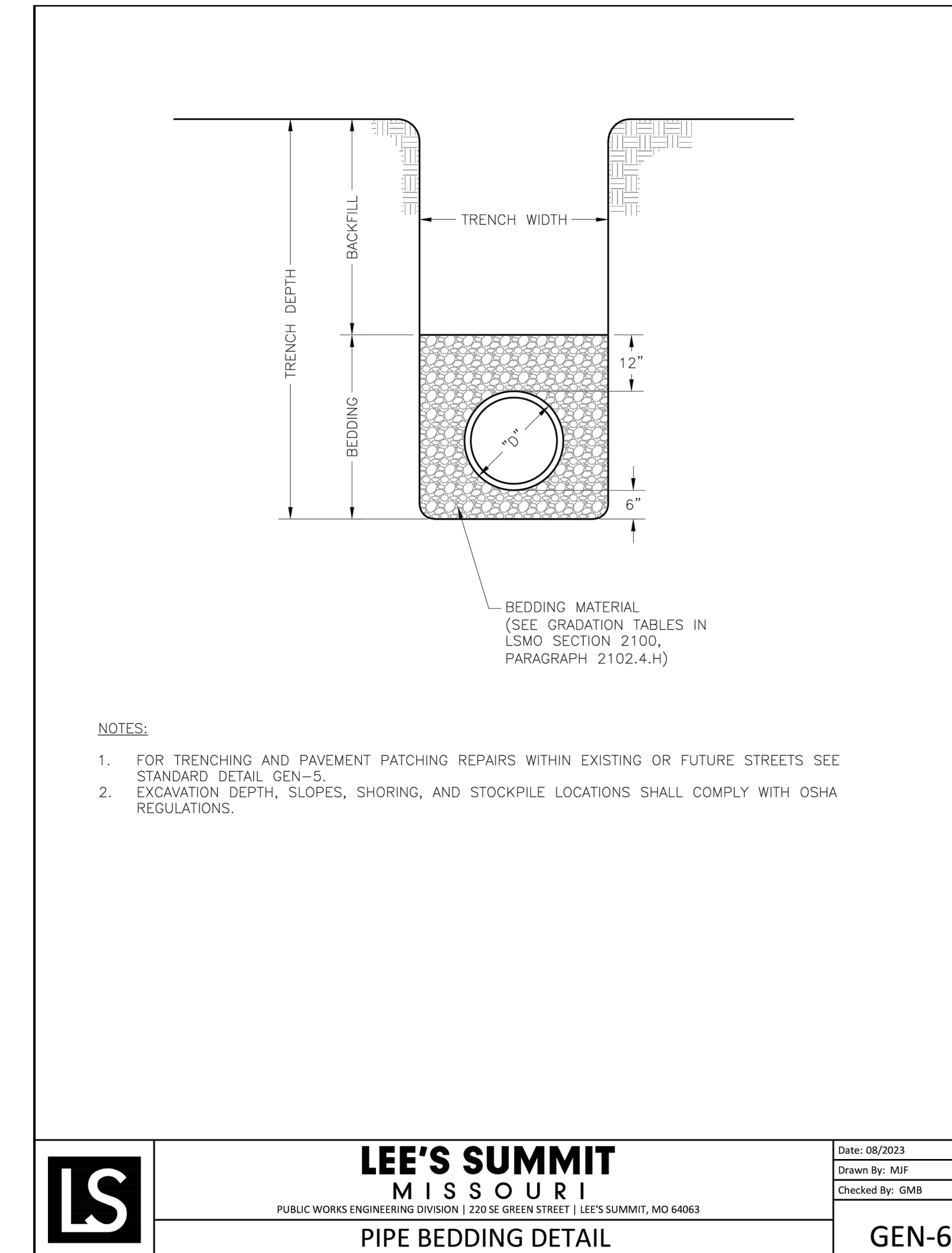
STEEL FRAME NOTES:

1. ALL WELDS SHALL BE PERFORMED IN ACCORDANCE WITH APPROPRIATE AWS SPECIFICATIONS AND PROCEDURES.
2. ALL WELDS ON EXPOSED SURFACES SHALL BE DRESSED SO AS TO PROVIDE A PLEASING FINISHED APPEARANCE.
3. THE ENTIRE FRAME SHALL BE PAINTED A SINGLE COAT OF CHEM-PRIME #37H-78 PRIMER (GRAY) OR EQUAL.

RELEASED FOR CONSTRUCTION
As Noted on Plan Review

Development Services Department
Lee's Summit, Missouri

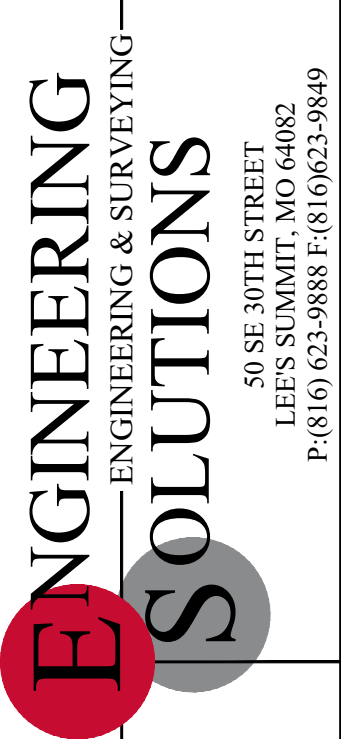
04/04/2025



LEE'S SUMMIT
MISSOURI
PUBLIC WORKS ENGINEERING DIVISION | 2202 S. GREEN STREET | LEE'S SUMMIT, MO 64063

Date: 08/2023
Drawn By: MFP
Checked By: GMB

GEN-6



Professional Registration
Missouri
Engineering 2005002186-D
Surveying 2005008319-D
Kansas
Engineering E-1685
Surveying LS-218
Oklahoma
Engineering S254
Nebraska
Engineering CA2821

The Trails of Park Ridge 2nd Plat
Lee's Summit, Jackson County, Missouri

Project:
The Trails of Park Ridge 2nd Plat
Issue Date:
March 27, 2025

STORM SEWER PLAN
Construction Plans for:
The Trails of Park Ridge 2nd Plat
Lee's Summit, Jackson County, Missouri



Matthew J. Schlicht
MO PE 2006019708
KS PE 19071
OK PE 25226
NE PE E-143355

REVISIONS