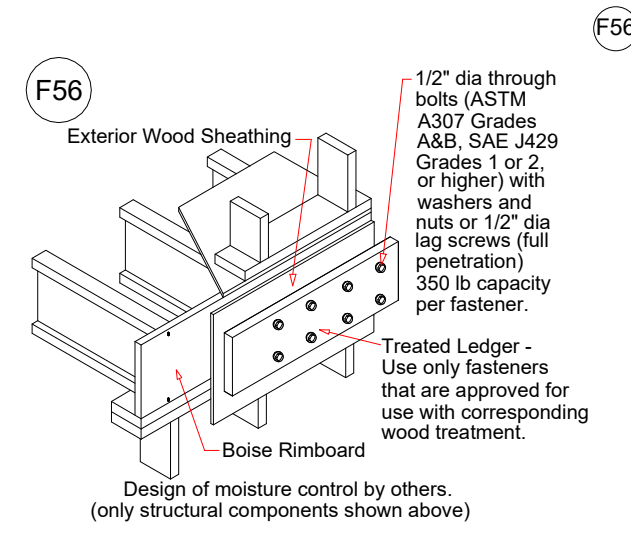


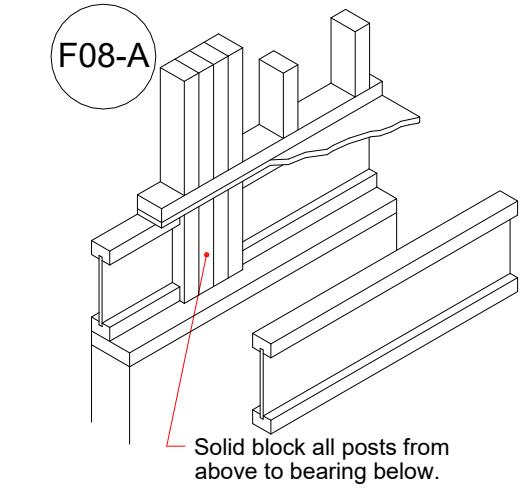
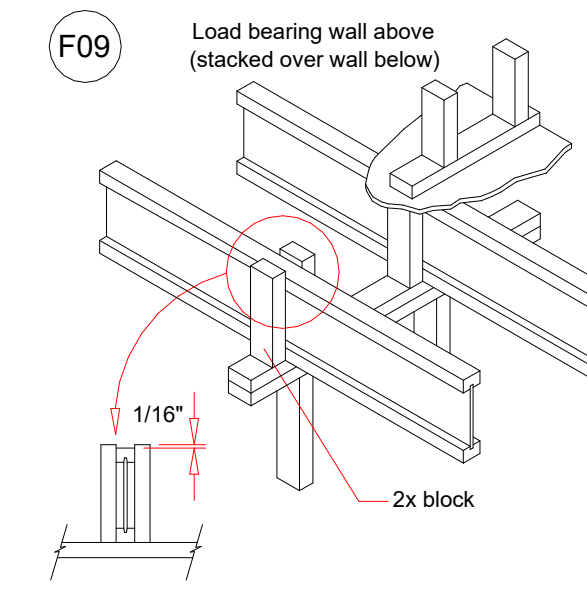
# Trumark Homes LLC 2117 NW O'Brien Rd

## Recommended 1st Floor Placement Plan

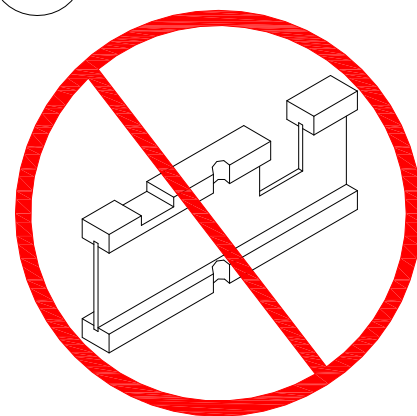
Joist Spacing 16" O.C



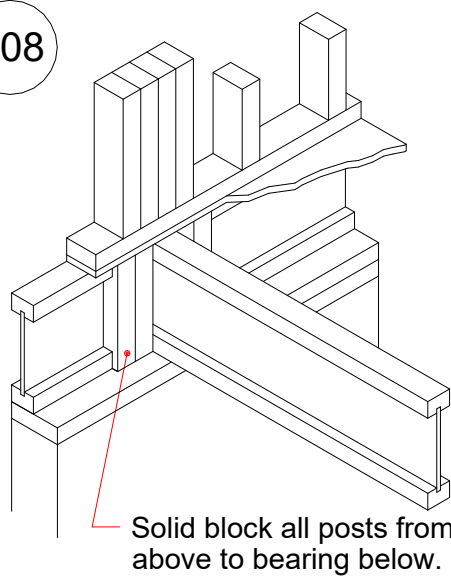
Typical Deck Attachment



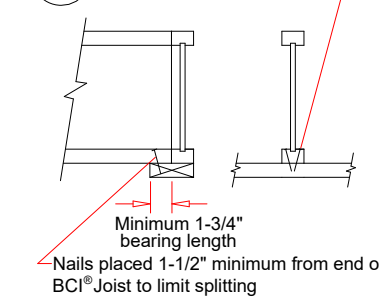
DN01 DO NOT cut, notch or drill flanges



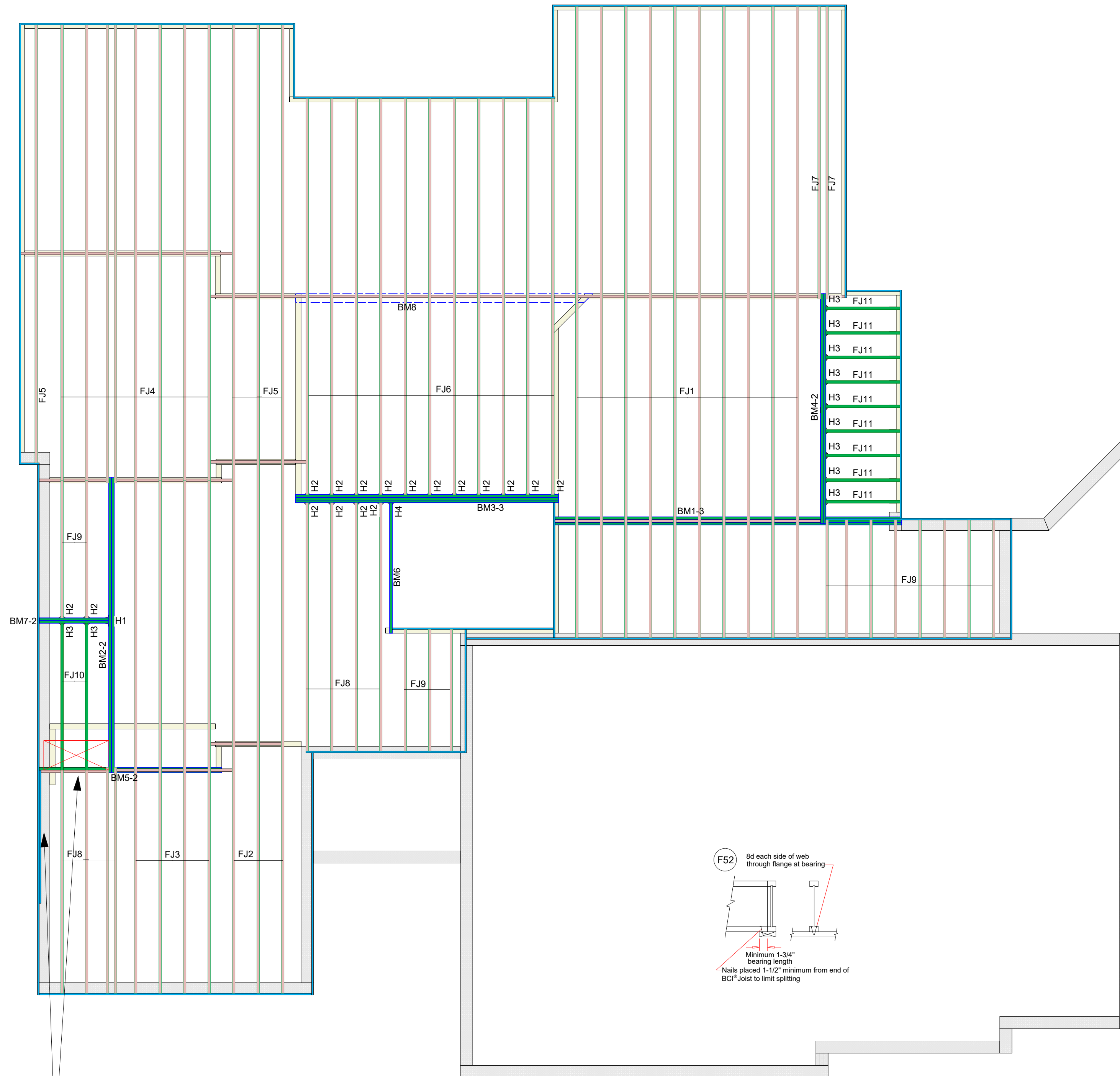
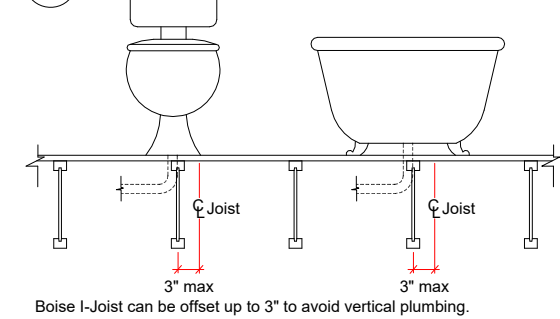
F08



F52

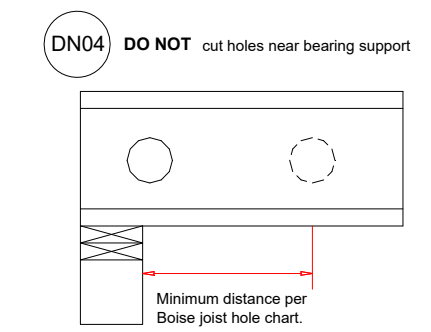


OJ-A



Products				
PlotID	Net Qty	Product	Length	Plies
FJ1	10	9-1/2" BCI@ 4500s-1.8	36' 0"	1
FJ2	3	9-1/2" BCI@ 4500s-1.8	30' 0"	1
FJ3	4	9-1/2" BCI@ 4500s-1.8	28' 0"	1
FJ4	8	9-1/2" BCI@ 4500s-1.8	26' 0"	1
FJ5	4	9-1/2" BCI@ 4500s-1.8	24' 0"	1
FJ6	11	9-1/2" BCI@ 4500s-1.8	22' 0"	1
FJ7	2	9-1/2" BCI@ 4500s-1.8	16' 0"	1
FJ8	8	9-1/2" BCI@ 4500s-1.8	14' 0"	1
FJ9	13	9-1/2" BCI@ 4500s-1.8	8' 0"	1
FJ10	2	1-3/4" x 7-1/4" VERSA-LAM® LVL 2.1E 3100 SP	8' 0"	1
FJ11	9	1-3/4" x 7-1/4" VERSA-LAM® LVL 2.1E 3100 SP	6' 0"	1
BM1-3	3	1-3/4" x 9-1/2" VERSA-LAM® LVL 2.1E 3100 SP	20' 0"	3
BM2-2	2	1-3/4" x 9-1/2" VERSA-LAM® LVL 2.1E 3100 SP	18' 0"	2
BM3-3	3	1-3/4" x 9-1/2" VERSA-LAM® LVL 2.1E 3100 SP	16' 0"	3
BM4-2	2	1-3/4" x 9-1/2" VERSA-LAM® LVL 2.1E 3100 SP	14' 0"	2
BM5-2	2	1-3/4" x 9-1/2" VERSA-LAM® LVL 2.1E 3100 SP	10' 0"	2
BM6	1	1-3/4" x 9-1/2" VERSA-LAM® LVL 2.1E 3100 SP	8' 0"	1
BM7-2	2	1-3/4" x 9-1/2" VERSA-LAM® LVL 2.1E 3100 SP	4' 0"	2
Ca1	21	1-1/8" x 9-1/2" BC RIM BOARD OSB	12' 0"	1
Bk1	40	9-1/2" BCI@ 4500s-1.8	2' 0"	1
Bk2	2	1-3/4" x 7-1/4" VERSA-LAM® LVL 2.1E 3100 SP	2' 0"	1

Accessories				
PlotID	Net Qty	Product	Length	Plies
	60	3/4" 4x8 OSB		1
Connector Summary				
PlotID	Qty	Manuf	Product	Skew
H1	1	Simpson	HHUS410	-
H2	17	Simpson	IUS1.81/9.5	-
H3	11	Simpson	HU7	-
H4	1	Simpson	HU9	-

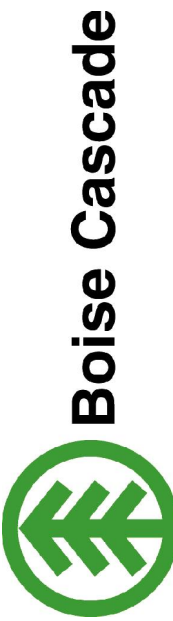


Fir Framing Up As Necessary In Area Indicated By Red "X"  
Double Rim Above Window This Location.

See Boise Specifier Guide For Filler Block Detail And Table  
In Regard To Double Joist Installation

DESIGN LOAD  
Live Load 40 PSF  
Dead Load 15 PSF  
Total Load 55 PSF

Revisions: BY:



NOTE:  
ALL MEASUREMENTS  
TO BE VERIFIED  
IN THE FIELD.

**USER NOTES**  
This design is provided as a courtesy to the builder and does NOT constitute a complete structural review of the project. Neither Lateral nor Seismic Analysis has been considered. All bearing locations and product usages shall be verified by the builder and engineer of record. This design shall be reviewed, verified, and approved by the builder, engineer of record, and local building department prior to ordering materials.

Trumark Homes LLC  
2117 NW O'Brien Rd  
McCRAY LUMBER  
Edwardsville, Keith Tally, 9134221300

Scale: 1/4" = 1'-0"  
DWG: BC FRAMER  
File: 24000166  
By: Keith Tally  
Date: 4/3/2025  
Sheet 1 of 1

