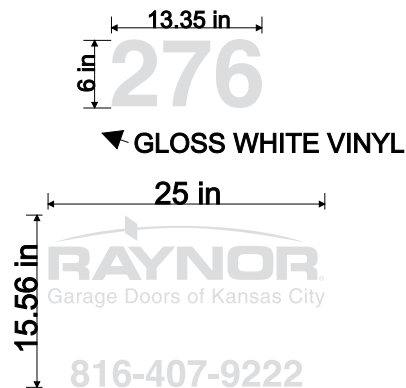


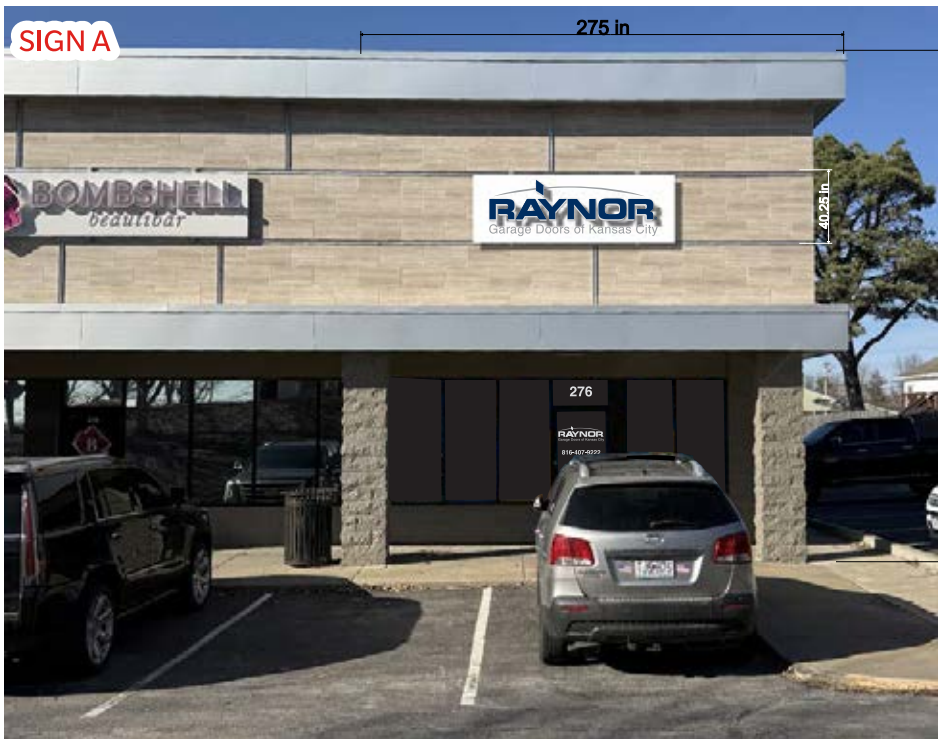
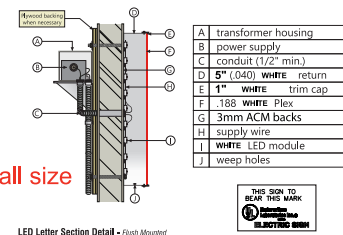
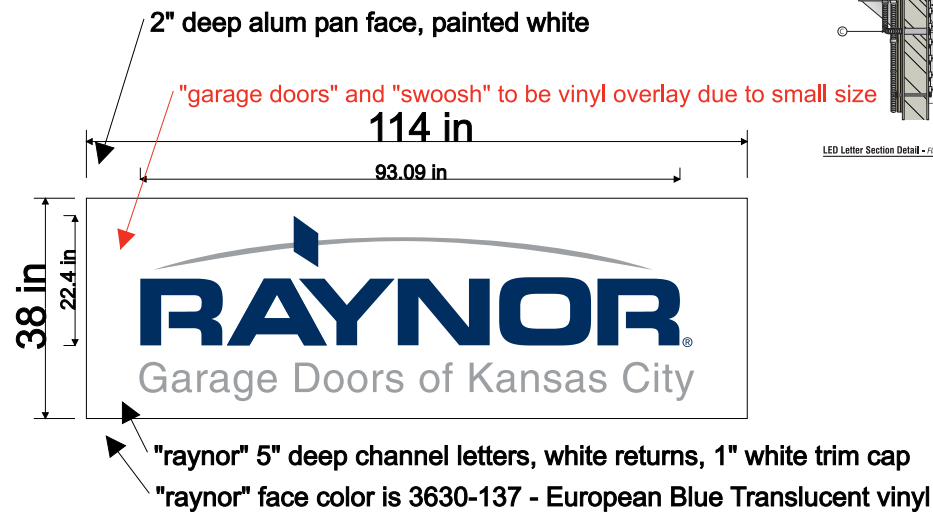
## Sign Package

Flush Mounted

1st Surface Graphics (QTY: 1 ea)



REMOVE ALL EXISTING WINDOW PERF, INSTALL NEW AS SHOWN



Client: Raynor Garage Doors of KC  
 Drawing Title: Sign Package  
 Jobsite Address: 276 SW Blue PKWY  
 Lee's Summit, MO 64063  
 Design Revision: 1  
 Date: 03/26/25  
 Sheet: 1 of 1  
 Designer: J Knipp  
 Account Rep: M Ryan

Design Approval: \_\_\_\_\_ Date: \_\_\_\_/\_\_\_\_/\_\_\_\_

Lease Height: 280"  
 Lease Width: 275"  
 Overall Space: 534.7 sq. ft.  
 Signage: 30 sq. ft. (5.8%)

A

Lease Height: 280"  
 Lease Width: 466"  
 Overall Space: 890 sq. ft.  
 Signage: 30 sq. ft. (3.4%)

B



11235 Mastin ST., STE 101  
 Overland Park, KS 6210  
 913.469.1500  
 913.469.1508

This drawing is property of ForeRunner Signs & Graphics and all rights to its use for reproduction are reserved by ForeRunner Signs & Graphics

Per City Criteria:  
 10% of building facade