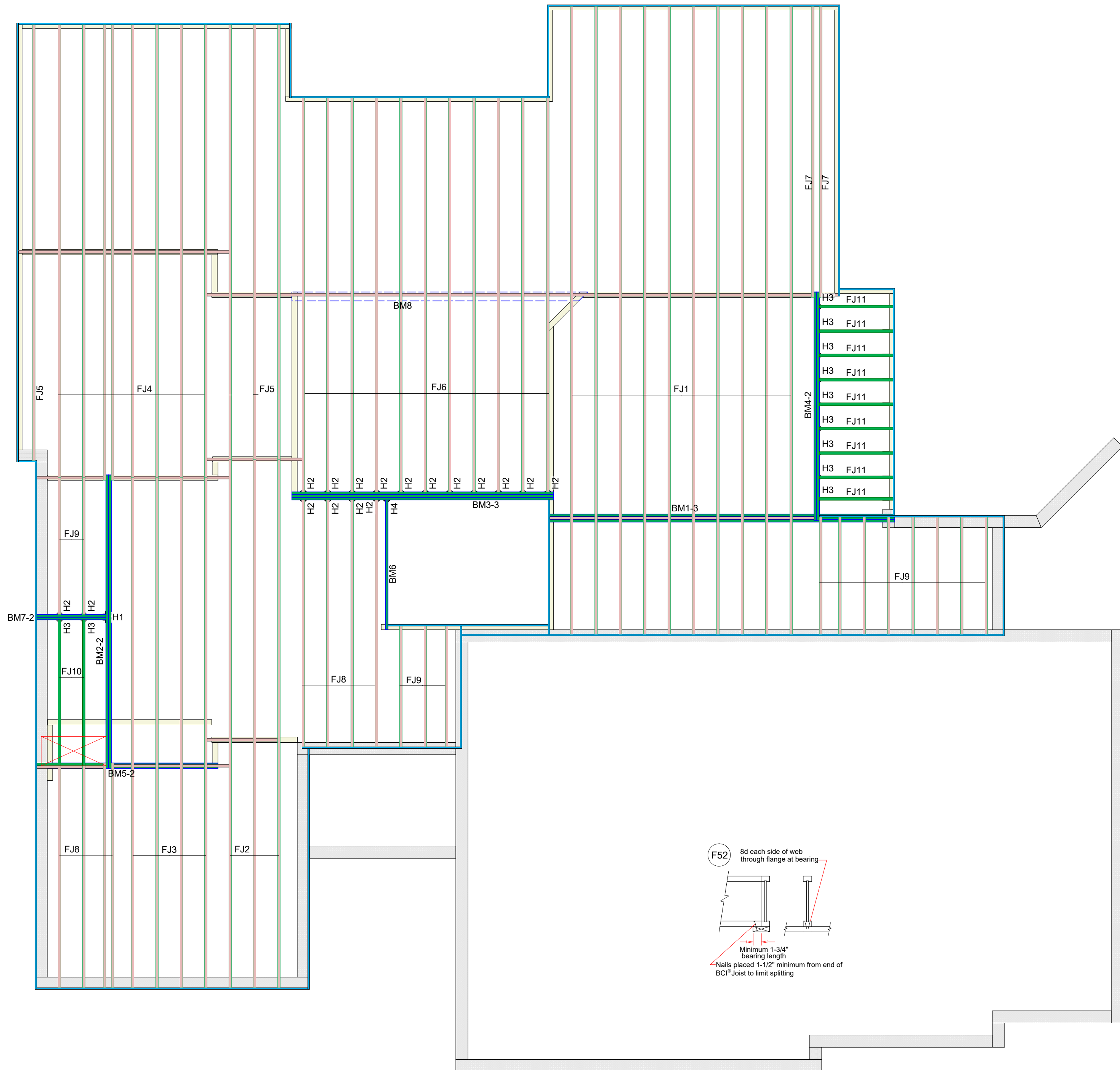
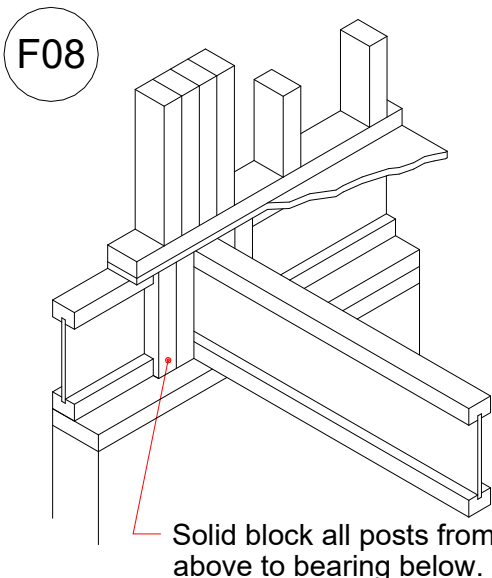
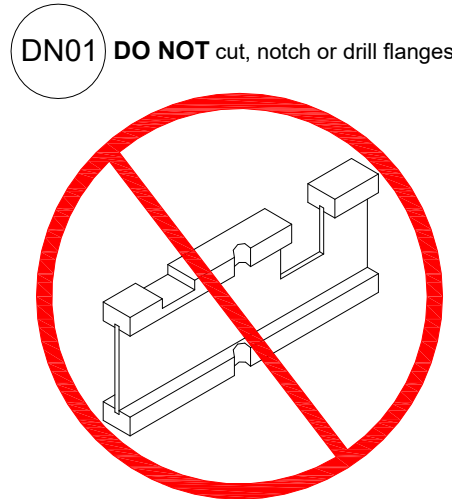
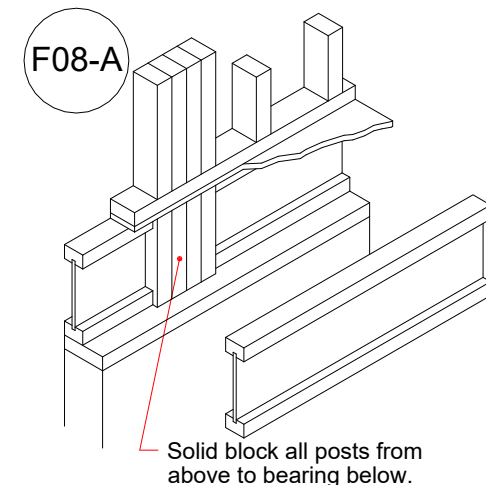
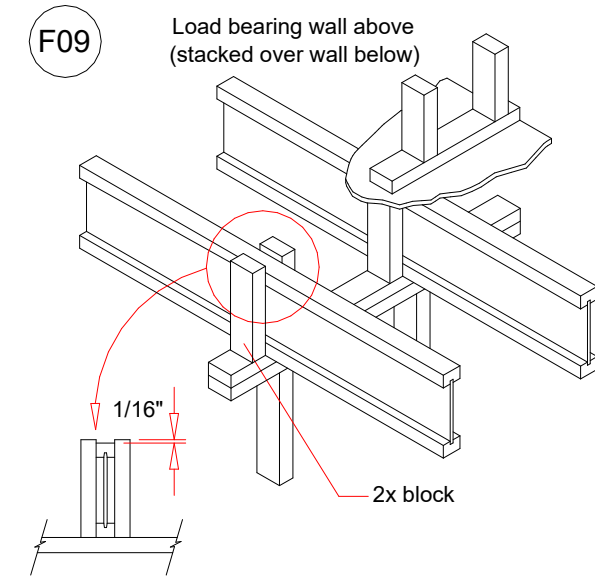


Typical Deck Attachment

Trumark Homes LLC Bosley Residence

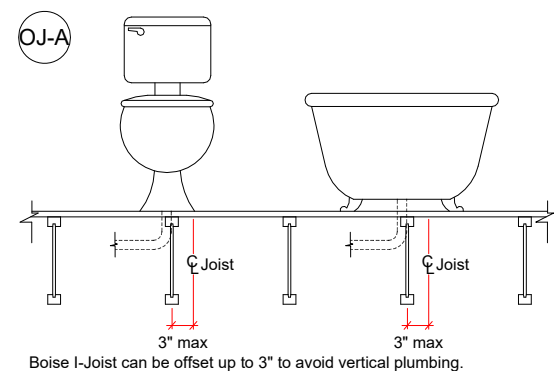
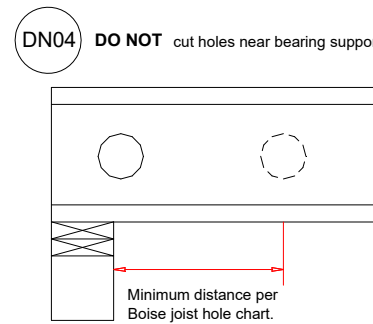
Recommended 1st Floor Placement Plan

Joist Spacing 16" O.C



Products				
PlotID	Net Qty	Product	Length	Plies
FJ1	10	9-1/2" BCI@ 4500s-1.8	36' 0"	1
FJ2	3	9-1/2" BCI@ 4500s-1.8	30' 0"	1
FJ3	4	9-1/2" BCI@ 4500s-1.8	28' 0"	1
FJ4	8	9-1/2" BCI@ 4500s-1.8	26' 0"	1
FJ5	4	9-1/2" BCI@ 4500s-1.8	24' 0"	1
FJ6	11	9-1/2" BCI@ 4500s-1.8	22' 0"	1
FJ7	2	9-1/2" BCI@ 4500s-1.8	16' 0"	1
FJ8	8	9-1/2" BCI@ 4500s-1.8	14' 0"	1
FJ9	13	9-1/2" BCI@ 4500s-1.8	8' 0"	1
FJ10	2	1-3/4" x 7-1/4" VERSA-LAM® LVL 2.1E 3100 SP	8' 0"	1
FJ11	9	1-3/4" x 7-1/4" VERSA-LAM® LVL 2.1E 3100 SP	6' 0"	1
BM1-3	3	1-3/4" x 9-1/2" VERSA-LAM® LVL 2.1E 3100 SP	20' 0"	3
BM2-2	2	1-3/4" x 9-1/2" VERSA-LAM® LVL 2.1E 3100 SP	18' 0"	2
BM3-3	3	1-3/4" x 9-1/2" VERSA-LAM® LVL 2.1E 3100 SP	16' 0"	3
BM4-2	2	1-3/4" x 9-1/2" VERSA-LAM® LVL 2.1E 3100 SP	14' 0"	2
BM5-2	2	1-3/4" x 9-1/2" VERSA-LAM® LVL 2.1E 3100 SP	10' 0"	2
BM6	1	1-3/4" x 9-1/2" VERSA-LAM® LVL 2.1E 3100 SP	8' 0"	1
BM7-2	2	1-3/4" x 9-1/2" VERSA-LAM® LVL 2.1E 3100 SP	4' 0"	2
Ca1	21	1-1/8" x 9-1/2" BC RIM BOARD OSB	12' 0"	1
Bk1	40	9-1/2" BCI@ 4500s-1.8	2' 0"	1
Bk2	2	1-3/4" x 7-1/4" VERSA-LAM® LVL 2.1E 3100 SP	2' 0"	1

Accessories				
PlotID	Net Qty	Product	Length	Plies
	60	3/4" 4x8 OSB		1
Connector Summary				
PlotID	Qty	Manuf	Product	Skew
H1	1	Simpson	HHUS410	-
H2	17	Simpson	IUS1.81/9.5	-
H3	11	Simpson	HU7	-
H4	1	Simpson	HU9	-



See Boise Specifier Guide For Filler Block Detail And Table
In Regard To Double Joist Installation

DESIGN LOAD
Live Load 40 PSF
Dead Load 15 PSF
Total Load 55 PSF

Revisions: BY:

Boise Cascade



NOTE:
ALL MEASUREMENTS
TO BE VERIFIED
IN THE FIELD.

USER NOTES

This design is provided as a courtesy to the builder and does NOT guarantee a complete structural review of the project. Neither Lateral nor Seismic Analysis has been considered. All bearing locations and product usages shall be verified by the builder and engineer of record. This design shall be reviewed, verified, and approved by the builder, engineer of record, and local building department prior to ordering materials.

Trumark Homes LLC
Bosley Residence
Mc C R A Y L U M B E R
Edwardsville, Kerth Tally, 9134221300

Scale: 1/4" = 1'-0"

DWG: BC FRAMER

File: 24000166

By: Keith Tally

Date: 11/14/2024

Sheet 1 of 1

McGray
Lumber
Serving the Professional Builder