



MiTek, Inc.
16023 Swingley Ridge Rd.
Chesterfield, MO 63017
314.434.1200

Re: 250028
GENE BOSLEY RES. / ROOF

The truss drawing(s) referenced below have been prepared by MiTek USA, Inc. under my direct supervision based on the parameters provided by Heartland Truss, Inc..

Pages or sheets covered by this seal: I70789591 thru I70789591

My license renewal date for the state of Missouri is December 31, 2025.

Missouri COA: Engineering 001193



January 15, 2025

Sevier, Scott ,Engineer

IMPORTANT NOTE: The seal on these truss component designs is a certification that the engineer named is licensed in the jurisdiction(s) identified and that the designs comply with ANSI/TPI 1. These designs are based upon parameters shown (e.g., loads, supports, dimensions, shapes and design codes), which were given to MiTek or TRENCO. Any project specific information included is for MiTek's or TRENCO's customers file reference purpose only, and was not taken into account in the preparation of these designs. MiTek or TRENCO has not independently verified the applicability of the design parameters or the designs for any particular building. Before use, the building designer should verify applicability of design parameters and properly incorporate these designs into the overall building design per ANSI/TPI 1, Chapter 2.

8.730 s Dec 5 2024 MiTek Industries, Inc. Wed Jan 15 10:50:33 2025 Page 1
ID:mrCY1X 2FQfIXm9hhpx4TmyPVI -wg2eSz3QwkiJT1voiMZ7m30rwLID5PioKkl2KJzy7sa

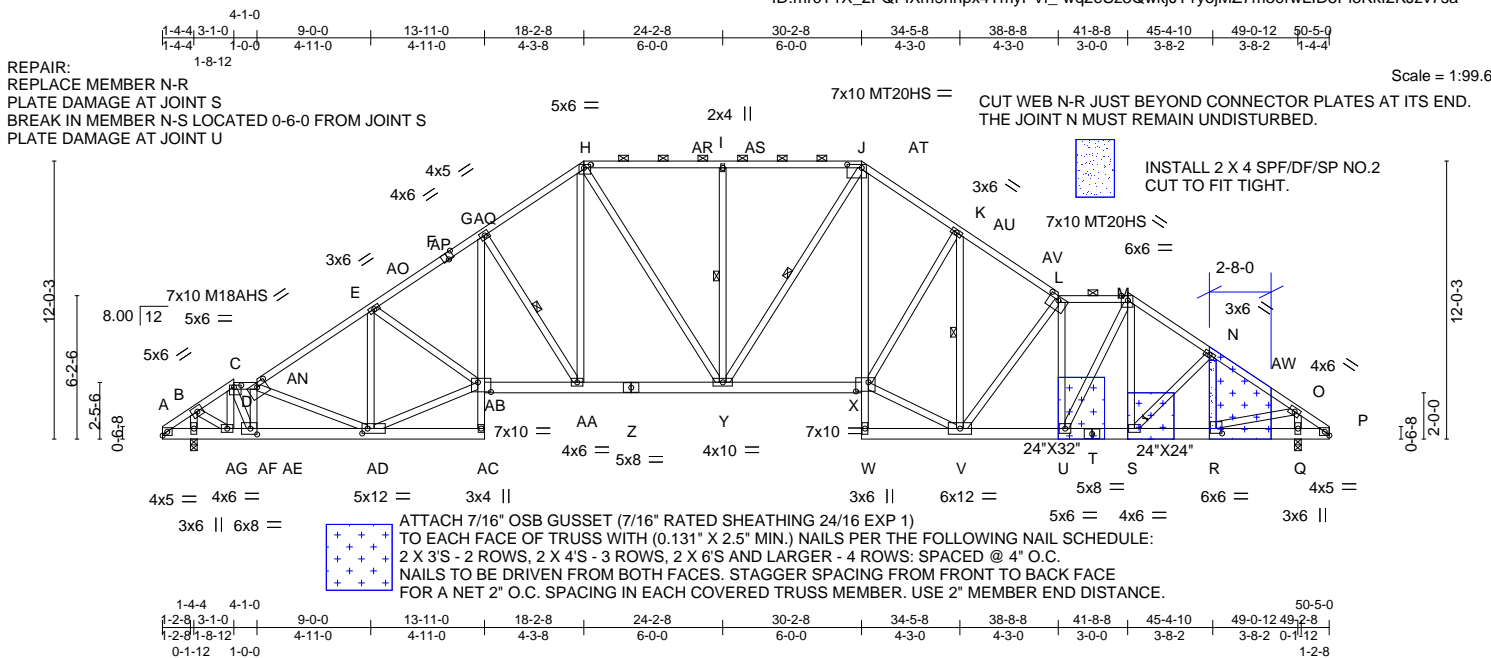


Plate Offsets (X,Y)-- [C:0-3-12,0-1-0], [D:0-5-0,0-2-0], [F:0-3-0,Edge], [H:0-3-8,0-1-12], [J:0-7-8,0-1-12], [L:0-5-0,0-2-0], [M:0-3-5,Edge], [R:0-3-0,0-2-8], [X:0-6-8,0-4-12]
[AB:0-6-12,0-5-0], [AD:0-2-12,0-2-8], [AE:0-3-8,0-3-0]

[illegible]

LUMBER-
TOP CHORD 2x4 SP No.2 *Except*
 D-F,H-J: 2x4 SP 1650F 1.5E
BOT CHORD 2x6 SP No.1 *Except*
 A-AC: 2x6 SP 2400F 2.0E, G-AC: 2x4 SP No.3
WEBS 2x4 SP No.3 *Except*
 C-AE,AB-AD,V-X: 2x4 SP No.2

BRACING-	
TOP CHORD	Structural wood sheathing directly applied, except 2-0-0 oc purlins (2-11-15 max.): C-D, H-J, L-M.
BOT CHORD	Rigid ceiling directly applied or 10-0-0 oc bracing.
WEBS	1 Row at midpt G-AA, I-Y, J-Y, K-V

REACTIONS. (size) AG=0-3-8, Q=0-3-8
 Max Horz AG=-287(LC 8)
 Max Uplift AG=-234(LC 12), Q=-208(LC 13)
 Max Grav AG=3015(LC 40), Q=2944(LC 40)

FORCES. (lb) - Max. Comp./Max. Ten. - All forces 250 (lb) or less except when shown.

TOP CHORD
A-B=-321/28, B-C=-2491/253, C-D=-3085/311, D-E=-4073/408, E-G=-4637/502,
G-H=-3642/500, H-I=-3011/484, I-J=-3011/484, J-K=-3800/531, K-L=-3707/491,
L-M=-3505/448, M-N=-3429/410, N-O=-3207/323, O-P=-311/20

BOT CHORD
AF-AG=-276/388, AE-AF=-307/2143, AD-AE=-374/3260, G-AB=-126/1238, AA-AB=-208/3717,
Y-AA=-150/2857, X-Y=-89/2988, U-V=-263/3543, S-U=-186/2764, R-S=-196/2562,
Q-R=-12/280, P-Q=-12/280

WEBS
J-X=-167/1655, B-AG=-2481/258, B-AF=-199/2207, C-AF=-1128/90, C-AE=-216/2517,
D-AE=-2546/273, E-AD=-1264/138, AB-AD=-280/3430, E-AB=-24/715, G-AA=-1547/283,
H-AA=-170/1335, H-Y=-195/734, I-Y=-885/191, J-Y=-184/390, V-X=-186/3350,
K-X=-151/468, K-V=-657/92, L-V=-960/195, L-U=-1531/200, M-U=-166/1694, N-S=-58/449,
N-R=-769/122, O-R=-204/2372, O-Q=-2551/285

NOTES-

- 1) Wind: ASCE 7-16; Vult=115mph (3-second gust) Vasd=91mph; TC DL=6.0psf; BCDL=6.0psf; h=20ft; Cat. II; Exp C; Enclosed; MWFRS (envelope) gable end zone and C-C Exterior(2E) 0-0-0 to 4-1-0, Interior(1) 4-1-0 to 13-2-0, Exterior(2R) 13-2-0 to 23-3-0, Interior(1) 23-3-0 to 25-2-0, Exterior(2R) 25-2-0 to 35-3-0, Interior(1) 35-3-0 to 38-8-8, Exterior(2R) 38-8-8 to 45-4-10, Exterior(2E) 45-4-10 to 50-5-0 zone; cantilever left and right exposed ; end vertical left and right exposed; C-C for members and forces & MWFRS for reactions shown; Lumber DOL=1.33 plate grip DOL=1.33
- 2) T CLL: ASCE 7-16; Pf=25.0 psf (Lum DOL=1.15 Plate DOL=1.15); Is=1.0; Rough Cat C; Fully Exp.; Ce=0.9; Cs=1.00; Ct=1.10
- 3) Unbalanced snow loads have been considered for this design.
- 4) Provide adequate drainage to prevent water ponding.
- 5) All plates are MT20 plates unless otherwise indicated.
- 6) This truss has been designed for a 10.0 psf bottom chord live load nonconcurrent with any other live loads.
- 7) Provide mechanical connection (by others) of truss to bearing plate capable of withstanding 234 lb uplift at joint AG and 208 lb uplift at joint Q.
- 8) This truss is designed in accordance with the 2018 International Residential Code sections R502.11.1 and R802.10.2 and referenced standard ANSI/TPI 1.



January 15, 2025

 WARNING - Verify design parameters and READ NOTES ON THIS AND INCLUDED MITEK REFERENCE PAGE MII-7473 rev. 1/2/2023 BEFORE USE.

Design valid for use only with MiTek® connectors. This design is based only upon parameters shown, and is for an individual building component, not a truss system. Before use, the building designer must verify the applicability of design parameters and properly incorporate this design into the overall building design. Bracing indicated is to prevent buckling of individual truss web and/or chord members only. Additional temporary and permanent bracing is always required for stability and to prevent collapse with possible personal injury and property damage. For general guidance regarding the fabrication, storage, delivery, erection and bracing of trusses and truss systems, see **ANSI/TP1 Quality Criteria, and DSB-22** available from Truss Plate Institute (www.tpinst.org) and **BCSI Building Component Safety Information** available from the Structural Building Component Association (www.sbcscomponents.com)

MiTek[®]
16023 Swingley Ridge Rd.
Chesterfield, MO 63017
314.434.1200 / MiTek-IJS.com

Job	Truss	Truss Type	Qty	Ply	GENE BOSLEY RES. / ROOF	I70789591
250028	A1	Piggyback Base Girder	1	1	Job Reference (optional)	

Heartland Truss, Inc,Plattsburg, MO - 64477,

8.730 s Dec 5 2024 MiTek Industries, Inc. Wed Jan 15 10:50:34 2025 Page 2
ID:mrCY1X_2FQFIxm9hpx4TmyPVI_-O0c0gJ42h1rA5BX_G44MJHZ0fkeSqsxxZO1ctlzv7sZ

- NOTES-**
- 9) Graphical purlin representation does not depict the size or the orientation of the purlin along the top and/or bottom chord.
- 10) Hanger(s) or other connection device(s) shall be provided sufficient to support concentrated load(s) 30 lb down and 50 lb up at 3-1-0 on bottom chord. The design/selection of such connection device(s) is the responsibility of others.
- 11) In the LOAD CASE(S) section, loads applied to the face of the truss are noted as front (F) or back (B).

LOAD CASE(S) Standard

1) Dead + Snow (balanced): Lumber Increase=1.15, Plate Increase=1.15

Uniform Loads (plf)

Vert: A-C=-70, C-D=-70, D-H=-70, H-J=-70, J-L=-70, L-M=-70, M-P=-70, AC-AH=-20, X-AB=-20, W-AK=-20

Concentrated Loads (lb)

Vert: AF=-30(F)

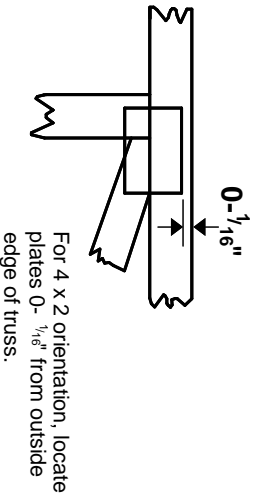
 **WARNING - Verify design parameters and READ NOTES ON THIS AND INCLUDED MITEK REFERENCE PAGE MII-7473 rev. 1/2/2023 BEFORE USE.**

Design valid for use only with MiTek® connectors. This design is based only upon parameters shown, and is for an individual building component, not a truss system. Before use, the building designer must verify the applicability of design parameters and properly incorporate this design into the overall building design. Bracing indicated is to prevent buckling of individual truss web and/or chord members only. Additional temporary and permanent bracing is always required for stability and to prevent collapse with possible personal injury and property damage. For general guidance regarding the fabrication, storage, delivery, erection and bracing of trusses and truss systems, see **ANSI/TPI1 Quality Criteria, and DSB-22** available from Truss Plate Institute (www.tpinst.org) and **BCSI Building Component Safety Information** available from the Structural Building Component Association (www.sbcsccomponents.com)

MiTek®
16023 Swingley Ridge Rd.
Chesterfield, MO 63017
314.434.1200 / MiTek-US.com

Symbols

PLATE LOCATION AND ORIENTATION



* Plate location details available in MITek software or upon request.

PLATE SIZE

4 X 4

The first dimension is the plate width measured perpendicular to slots. Second dimension is the length parallel to slots.

LATERAL BRACING LOCATION



Indicated by symbol shown and/or by text in the bracing section of the output. Use T or I bracing if indicated.

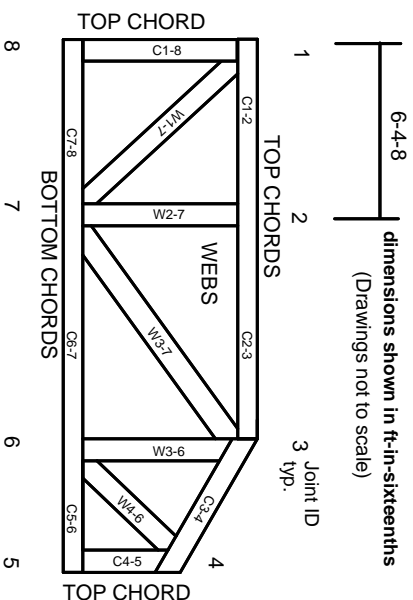
BEARING



Indicates location where bearings (supports) occur. Icons vary but reaction section indicates joint number/letter where bearings occur. Min size shown is for crushing only.

Industry Standards:
ANSI/TP1: National Design Specification for Metal Plate Connected Wood Truss Construction.
DSB-22: Design Standard for Bracing.
BCSI: Building Component Safety Information, Guide to Good Practice for Handling, Installing, Restraining & Bracing of Metal Plate Connected Wood Trusses.

Numbering System



JOINTS ARE GENERALLY NUMBERED/LETTERED CLOCKWISE AROUND THE TRUSS STARTING AT THE JOINT FARTHEST TO THE LEFT.

CHORDS AND WEBS ARE IDENTIFIED BY END JOINT NUMBERS/LETTERS.

Product Code Approvals

ICC-ES Reports:
ESR-1988, ESR-2362, ESR-2685, ESR-3282
ESR-4722, ESL-1388

Design General Notes

Trusses are designed for wind loads in the plane of the truss unless otherwise shown.

Lumber design values are in accordance with ANSI/TP1 1 section 6.3. These truss designs rely on lumber values established by others.

© 2023 MITek® All Rights Reserved

MITek®

MITek Engineering Reference Sheet: MIL-7473 rev. 1/2/2023

General Safety Notes

Failure to Follow Could Cause Property Damage or Personal Injury

1. Additional stability bracing for truss system, e.g. diagonal or X-bracing, is always required. See BCSI.
2. Truss bracing must be designed by an engineer. For wide truss spacing, individual lateral braces themselves may require bracing, or alternative Tor I bracing should be considered.
3. Never exceed the design loading shown and never stack materials on inadequately braced trusses.
4. Provide copies of this truss design to the building designer, erection supervisor, property owner and all other interested parties.
5. Cut members to bear tightly against each other.
6. Place plates on each face of truss at each joint and embed fully. Knots and wane at joint locations are regulated by ANSI/TP1 1.
7. Design assumes trusses will be suitably protected from the environment in accord with ANSI/TP1 1.
8. Unless otherwise noted, moisture content of lumber shall not exceed 19% at time of fabrication.
9. Unless expressly noted, this design is not applicable for use with fire retardant, preservative treated, or green lumber.
10. Camber is a non-structural consideration and is the responsibility of truss fabricator. General practice is to camber for dead load deflection.
11. Plate type, size, orientation and location dimensions indicated are minimum plating requirements.
12. Lumber used shall be of the species and size, and in all respects, equal to or better than that specified.
13. Top chords must be sheathed or purlins provided at spacing indicated on design.
14. Bottom chords require lateral bracing at 10 ft. spacing, or less, if no ceiling is installed, unless otherwise noted.
15. Connections not shown are the responsibility of others.
16. Do not cut or alter truss member or plate without prior approval of an engineer.
17. Install and load vertically unless indicated otherwise.
18. Use of green or treated lumber may pose unacceptable environmental, health or performance risks. Consult with project engineer before use.
19. Review all portions of this design (front, back, words and pictures) before use. Reviewing pictures alone is not sufficient.
20. Design assumes manufacture in accordance with ANSI/TP1 1 Quality Criteria.
21. The design does not take into account any dynamic or other loads other than those expressly stated.