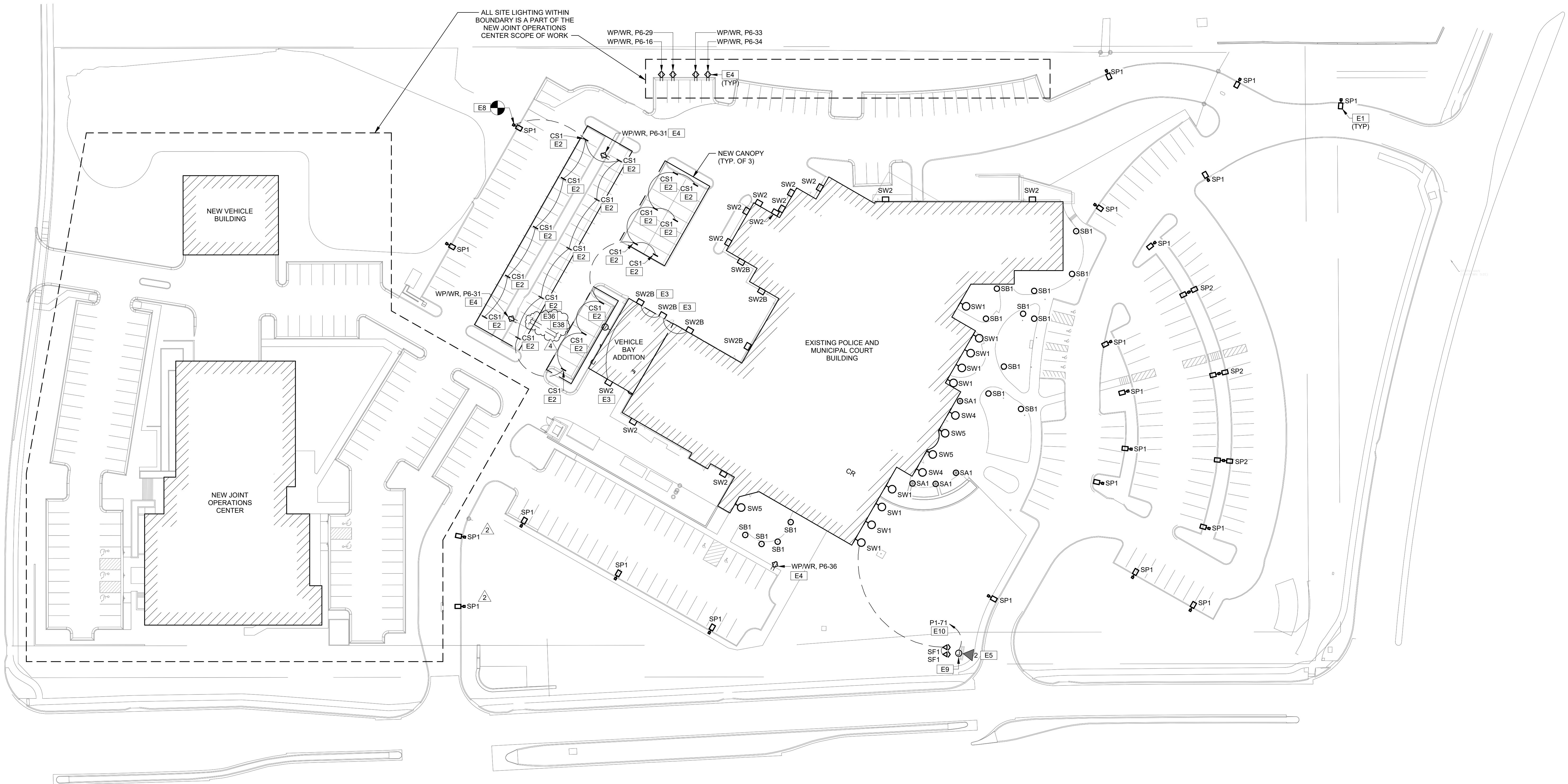


LIGHTING CONTROL DEVICE SCHEDULE					
LABEL	MANUFACTURER	MODEL	APPROVED EQUIVALENT	DESCRIPTION	NOTES
WALL SWITCH OCCUPANCY SENSORS					
OSD	ACUITY nLIGHT	nWSX PDT D	ETC NX CONTROLS WAITSTOPPER	DUAL TECHNOLOGY OCCUPANCY SENSOR WITH RAISE/LOWER BUTTONS.	1
LIGHTING CONTROL DEVICE SCHEDULE GENERAL NOTES:					
A. PROVIDE CONTROL DEVICES FROM THE LIST OF MANUFACTURERS AND MODELS OR APPROVED EQUIVALENTS. ADDITIONAL CONTROLS SHALL ONLY BE ACCEPTED IF SUBMITTED WITH AN APPROVED SUBSTITUTION FORM. LIGHTING CONTROLS BID WITHOUT BEING LISTED AS AN APPROVED EQUIVALENT AND WITHOUT THE WRITTEN APPROVAL OF THE ARCHITECT AND ENGINEER ARE AT THE CONTRACTOR'S RISK.					
B. ADJUST SENSOR SETTINGS AND LOCATIONS FOR PROPER LIGHTING CONTROL.					
C. CEILING MOUNTED OCCUPANCY SENSORS SHALL NOT BE INSTALLED WITHIN FOUR FEET OF DIFFUSERS, CEILING MOUNTED PROJECTORS, OR OTHER CEILING-MOUNTED OBSTRUCTIONS.					
D. COORDINATE ALL SETTINGS, PROGRAMMING, AND SENSOR LOCATIONS WITH OWNER PRIOR TO SUBSTANTIAL COMPLETION. CONTROLS SHALL BE TESTED AND FULLY COMMISSIONED.					

LIGHT FIXTURE SCHEDULE												
TAG	MANUFACTURER	MODEL	APPROVED EQUIVALENT	LIGHT SOURCE	DRIVER	LUMENS	CCT	VOLTAGE	INPUT VA	DESCRIPTION	NOTES	
EX1	LITHONIA	EDGR 1 R EL	DUAL-LITE LE, LSL LSK, MULE GEL	LED				277 V	5 VA	EDGE LIT LED EXIT SIGN WITH RED LETTERS ON A MIRROR PANEL. INTEGRAL BATTERY POWER. TOP MOUNTED TO CEILING ABOVE AND CENTERED ABOVE DOOR. REFER TO DRAWINGS FOR NUMBER AND DIRECTION OF CHEVRONS.		
EXTERIOR LIGHT FIXTURES												
CS1	LUMENWERX	VIAWETS D TMG HLO SW 80CRI 250LMF 30K 4FT UNV D1 1C TF GSM AL NA	TBD	LED	0-10V	1000 lm	3000 K	277 V	24 VA	SURFACE MOUNTED, WET LISTED LINEAR FIXTURE. CUSTOM PROGRAM DRIVER TO OUTPUT LUMENS SHOWN.		
SA1	LUMINIS	EC803-L1W30R1-R5-277V-BKT-K3-ECM 4T	HEPER TERRA, SOLERA OTAY	LED	0-10V	3700 lm	3000 K	277 V	38 VA	POST TOP LED FIXTURE WITH DECORATIVE TOP COVER. EXTERIOR RATED. PROVIDE WITH 10'-0" TALL, 4" DIAMETER ROUND POLE. BLACK FINISH.		
SB1	LUMINIS	LQ627-L1L10-R5-277V-BKT-K3	HEPER NORMA, SOLERA SSOB	LED	0-10V	1200 lm	3000 K	277 V	13 VA	SQUARE LED BOLLARD. EXTERIOR RATED. 6" SQUARE BY 42" TALL. BLACK FINISH.		
SF1	ERCO	35702.023	HEPER VEGA, LUMENPULSE LOS	LED	0-10V	2000 lm	3000 K	277 V	19 VA	SURFACE MOUNTED LED WALL WASH FLOOD. EXTERIOR RATED. BLACK FINISH.		
SP1	LITHONIA	DSX1-P3-30K-T4M-XVOLT-SPA-DMG-H S-DBLXD-G1-NLTAIR2 PIRHN	COOPER GALN, LSI MRM	LED	0-10V	11400 lm	3000 K	480 V	102 VA	RECTANGULAR LED AREA LIGHT. EXTERIOR RATED. TYPE 4 DISTRIBUTION. BLACK FINISH. PROVIDE WITH 17'-0" TALL BY 6" WIDE SQUARE POLE. POLE HEIGHT, INCLUDING CONCRETE BASE, SHALL NOT EXCEED 20'-0" AFG. WIRELESS CONTROLS FOR AUTOMATIC DIMMING.	2	
SP2	LITHONIA	DSX1-P3-30K-T4M-XVOLT-SPA-DMG-H S-DBLXD-G1-NLTAIR PIRHN	COOPER GALN, LSI MRM	LED	0-10V	22800 lm	3000 K	480 V	204 VA	SIMILAR TO TYPE SP1, EXCEPT WITH (2) HEADS AT 180 DEGREES ON THE SAME POLE AND NO HOUSE SIDE SHIELD.		
SW1	CAMMAN LIGHTING	OW6T0-46-30K-CLV-MV-PSB	LIGHTWAY BLCW, SOLERA SLIM	LED	0-10V	3400 lm	3000 K	277 V	40 VA	VERTICAL WALL SCONCE WITH FLAT METAL BODY. EXTERIOR RATED. BLACK FINISH.		
SW2	LITHONIA	WDGE2 LED P2 30K 90CRI VW MVOLT SRM DMG DBLXD	LSI XWS SIL, SPITZER LIGHTING WFPF	LED	0-10V	2000 lm	3000 K	277 V	15 VA	LED EXTERIOR WALL PACK. BLACK FINISH.		
SW2B	LITHONIA	WDGE2 LED P2 30K 90CRI VF MVOLT SRM DMG DBLXD	LSI XWS SIL, SPITZER LIGHTING WFPF	LED	0-10V	2000 lm	3000 K	277 V	15 VA	SIMILAR TO TYPE SW2, EXCEPT FORWARD THROW OPTICS.		
SW4	PERFORMANCE IN LIGHTING	070198	TBD	LED	0-10V	330 lm	3000 K	277 V	10 VA	SQUARE WALL SCONCE WITH PATTERNED OUTPUT.		
SW5	LUMINIS	EC803-L1W18R1-R5-277V-BKT-K3-EC8 W	HEPER TERRA, SOLERA OTAY	LED	0-10V	2200 lm	3000 K	277 V	21 VA	SIMILAR TO TYPE SA1, EXCEPT WALL MOUNTED.		
INTERIOR LIGHT FIXTURES												
IS1	LITHONIA	CSS L48 4000LM MVOLT 35K 80CRI	SIGNIFY SDS, WILLIAMS FS	LED	0-10V	4000 lm	3500 K	277 V	35 VA	4 FOOT SURFACE MOUNTED STRIPLIGHT WITH LENS.		
IS2	LITHONIA	CSVT L48 5000LM MVOLT 35K 80CRI	WILLIAMS 96	LED	NON-DIM	5000 lm	3500 K	277 V	42 VA	VAPOR TIGHT LED STRIP FIXTURE.		
TR1	LITHONIA	2ALL4 48L E21 LP835	FINELITE HPR, PINNACLE TR24, SIGNIFY FFX	LED	0-10V	4750 lm	3500 K	277 V	40 VA	RECESSED LED 2x4 TROFFER WITH CENTER ACRYLIC LENS.		
TR2	INNERSCENE	CS-24-GC-INT-CSB-P0002	ARTIFICIAL SKY ARTIFICIAL SKYLIGHT	LED	0-10V	4350 lm	3500 K	277 V	75 VA	ARTIFICIAL LED SKYLIGHT WITH AUTOMATIC CIRCADIAN RHYTHM INTENSITY AND COLOR TEMPERATURE PROGRAMMING. PROVIDE NECESSARY CONTROLS TO ENSURE THE FIXTURE AUTOMATICALLY TRANSITIONS THROUGHOUT THE DAY WITHOUT USER INPUT.		
LIGHT FIXTURE SCHEDULE GENERAL NOTES:												
A. PROVIDE LIGHT FIXTURES FROM THE LIST OF MANUFACTURERS AND MODELS OR APPROVED EQUIVALENTS. ADDITIONAL LIGHT FIXTURES SHALL ONLY BE ACCEPTED IF SUBMITTED WITH AN APPROVED SUBSTITUTION FORM. LIGHT FIXTURES BID WITHOUT BEING LISTED AS AN APPROVED EQUIVALENT AND WITHOUT THE WRITTEN APPROVAL OF THE ARCHITECT AND ENGINEER ARE AT THE CONTRACTOR'S RISK.												
B. PROVIDE ALL MOUNTING AND SUPPORT HARDWARE AS REQUIRED PER THE MANUFACTURER INSTALLATION REQUIREMENTS AND TO MEET SPECIFIED MOUNTING HEIGHTS.												
C. PROVIDE UNSWITCHED HOT CONDUCTOR TO ALL LIGHT FIXTURES AND EXIT SIGNS WITH EMERGENCY BATTERY BACK-UP POWER.												
D. FINAL LIGHT FIXTURE FINISHES SHALL BE CONFIRMED BY ARCHITECT PRIOR TO ORDERING.												



1 ELECTRICAL SITE PLAN
1" = 40'-0"

GENERAL NOTES:

- REFER TO SHEET EG001 FOR GENERAL ELECTRICAL NOTES.
- ALL EXTERIOR LIGHTING SHALL COMPLY WITH THE STANDARDS UNDER ARTICLE 8 OF THE CITY'S UNIFIED DEVELOPMENT ORDINANCE (UDO). MORE SPECIFICALLY, COMPLIANCE WITH THE LIGHTING STANDARDS OF UDO SECTIONS 8.220, 8.230, 8.250, 8.260 AND 8.270 SHALL TAKE PLACE AT THE TIME OF FINAL DEVELOPMENT PLAN.

ELECTRICAL PLAN NOTES:

- ALL EXTERIOR LIGHT FIXTURES SHOWN ARE ONE-FOR-ONE REPLACEMENTS OF EXISTING LIGHT FIXTURES UNLESS OTHERWISE NOTED. EXISTING POLES NO LONGER MEET LEE'S SUMMIT REQUIREMENTS. REPLACE EXISTING POLE WITH NEW 80' TOTAL HEIGHT, INCLUDING CONCRETE BASE. DOES NOT EXCEED 20'-0" AFG.
- PROVIDE NEW LIGHT FIXTURE IN NEW CANOPY. COORDINATE EXACT ROUTE OF SAW CUT WITH ARCHITECT PRIOR TO ROUGH-IN. ALL CONDUITS SHALL BE CONCEALED BELOW GRADE OR WITHIN COLUMNS, WALLS, OR CANOPIES.
- PROVIDE NEW LIGHT FIXTURE ON VEHICLE BAY ADDITION.
- PROVIDE NEW RECEPTACLES TO REPLACE EXISTING RECEPTACLES DEMOLISHED DURING JOINT OPERATIONS BUILDING SCOPE OF WORK. PROVIDE POST FOR FINISHED APPEARANCE, ARLINGTON GARD-N-POST, TAYMAC PARKPOST, OR APPROVED EQUAL. MAINTAIN EXISTING CIRCUITS. CIRCUITS SHOWN ARE BASED ON FIELD VERIFIED INFORMATION PROVIDED BY THE FACILITY.
- (1) 1" UGC TO POLICE BUILDING FOR VIDEO BOARD MONUMENT SIGN.
- CONNECT TO EXISTING LIGHTING CIRCUIT AND CONTROLS. OVERALL LIGHTING POWER IS REDUCED EVEN WITH NEW LIGHTING.
- PROVIDE POWER TO EXTERIOR VIDEO BOARD. COORDINATE EXACT LOCATION AND REQUIREMENTS WITH VENDOR PRIOR TO ROUGH-IN.
- PROVIDE POWER FROM SPARE 20A, 1P BREAKER. CIRCUIT SHOWN IS BASED ON AS-BUILT DRAWINGS. FIELD VERIFY EXACT CIRCUIT AND NOTIFY ENGINEER OF RESULTE.
- PROVIDE (4) CAT6 CABLES THROUGH (1) 2" UGC TO SERVER ROOM IN EXISTING BUILDING.
- PROVIDE (1) 4" C. FROM MAIN ELECTRICAL ROOM TO CANOPY FOR FUTURE SOLAR INSTALLATION. CAP AND SEAL BOTH ENDS OF CONDUIT.

HOEFER WELKER

4622 PENNSYLVANIA AVENUE

SUITE 1400

KANSAS CITY, MO 64112

P: 913.307.3700

hoeferwelker.com

COPYRIGHT © BY HOEFER WELKER, LLC

LEE'S SUMMIT POLICE RENOVATION

10 NE TUDOR RD
LEE'S SUMMIT, MO 65086

REVISION DATES:

2 ADDENDUM #2 11/26/2024

4 ASI 002 2/21/2025



PROFESSIONAL SEAL

ES101

ISSUE DATE: NOVEMBER 7, 2024

HOEFER WELKER #: 138191

ELECTRICAL SITE PLAN