

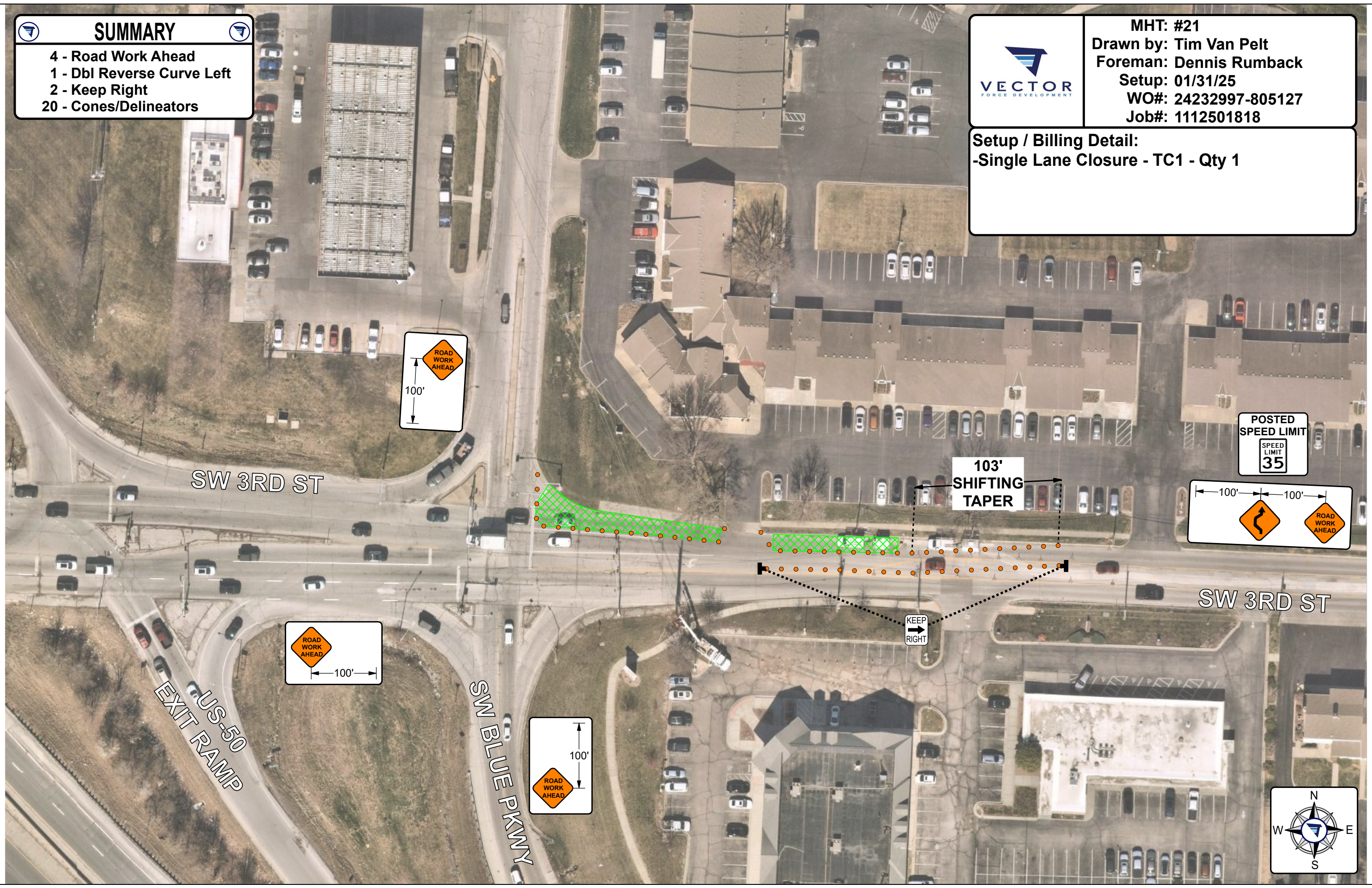
**SUMMARY**

- 4 - Road Work Ahead
- 1 - Dbi Reverse Curve Left
- 2 - Keep Right
- 20 - Cones/Delineators

**VECTOR**  
FORCE DEVELOPMENT

MHT: #21  
 Drawn by: Tim Van Pelt  
 Foreman: Dennis Rumback  
 Setup: 01/31/25  
 WO#: 24232997-805127  
 Job#: 1112501818

Setup / Billing Detail:  
 -Single Lane Closure - TC1 - Qty 1



SW 3RD ST

US-50  
EXIT RAMP

SW BLUE PKWY

SW 3RD ST

103'  
SHIFTING  
TAPER

POSTED  
SPEED LIMIT  
SPEED  
LIMIT  
35

KEEP  
RIGHT

ROAD  
WORK  
AHEAD  
100'

ROAD  
WORK  
AHEAD  
100'

ROAD  
WORK  
AHEAD  
100'

100' 100'  
ROAD  
WORK  
AHEAD

