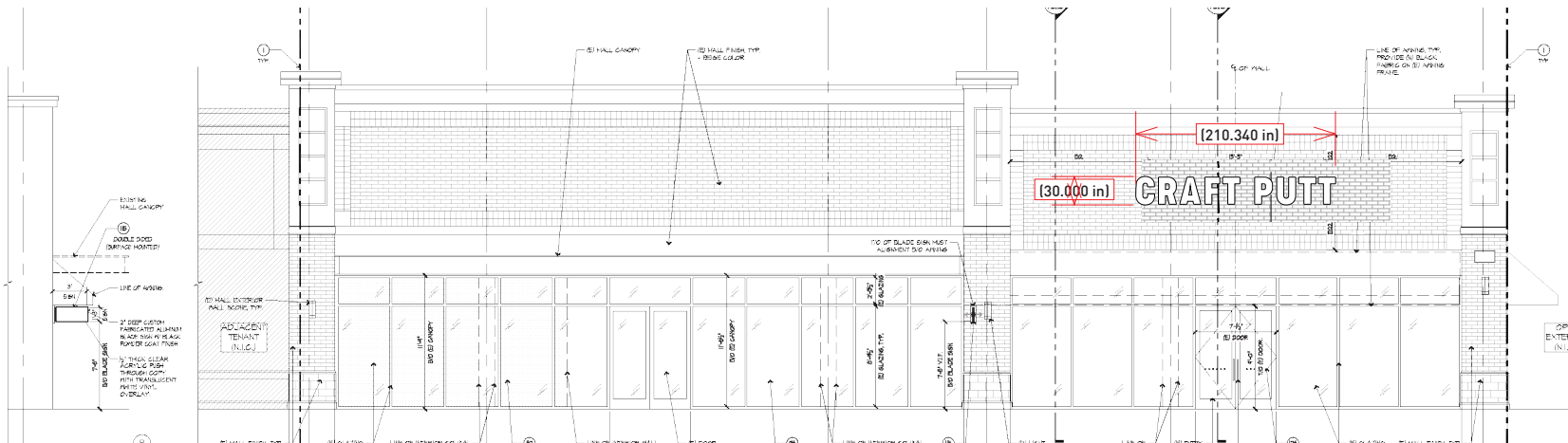
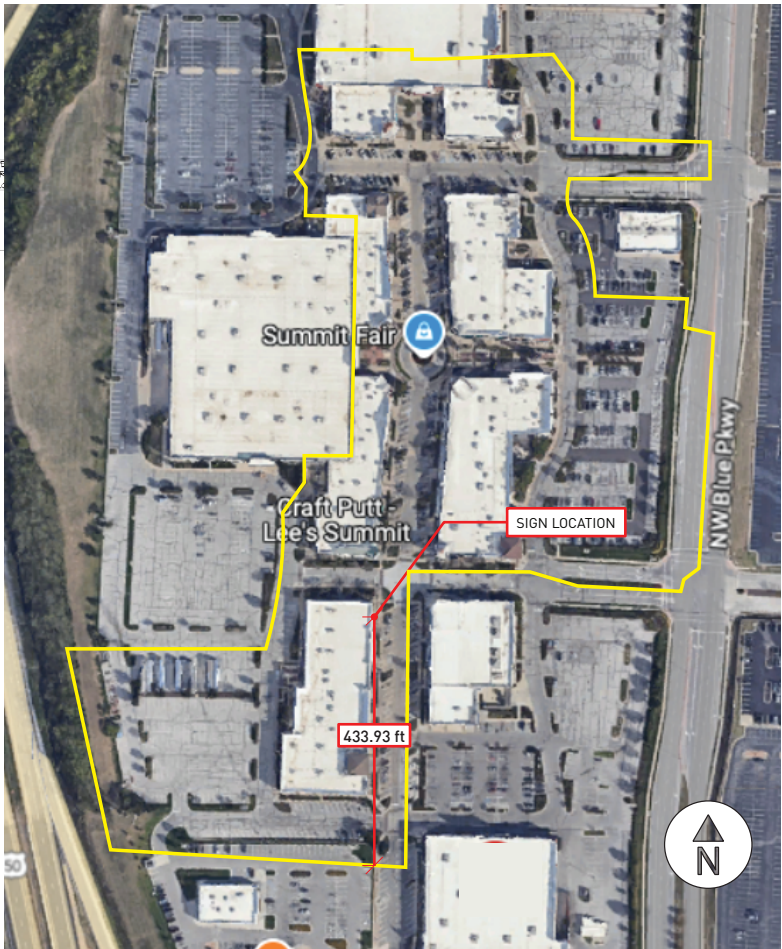


QTY: 01



TENNANT SPACE: APPROX 11,500 SQ/FT



FACADE: 2,760 sqft  
SIGN: 43.75 sqft  
COVERAGE: 1.6%

**ELECTRICAL NOTES**  
Power MUST be provided by Customer unless otherwise specified in writing.  
Access to back side of fascia is required for install. Each Sign location MUST have:  
1. PRIMARY ELECTRICAL OF 120V.  
2. J-BOX INSTALLED WITHIN 6 FT. OF SIGN  
Otherwise, Customer is responsible for the Power Connection to the Sign.

- A 1/4" White Acrylic Faces
- B 2.36" Returns, White Trimless Letterform Coil
- C 6MM ACM Backer
- D Prism Synergy Mini White LEDs, Power Supply
- E Direct Mount
- F

- COLOR(s)
- 1 WHITE
  - 2
  - 3
  - 4

SALESPERSON AUTHORIZATION:

Date: 03.11.2025

Client: Clifton Alexander

Company: Reactor, LLC

Drawn by: Josh Wilkinson

Salesperson: Dennis Baughman

Page: 1 of 4

o 17919

CUSTOMER AUTHORIZATION:

INSTALLATION:  
SUMMITFAIR  
840 NW Blue Pkwy  
Suite K101  
Lee's Summit, MO 64086

PRODUCTION RELEASE:

**ATTENTION:**

PLEASE THOROUGHLY REVIEW ALL DIMENSIONS, COLOR CODES, SPELLING, GRAMMAR, AND SIGN LOCATIONS PRIOR TO APPROVAL. MIDTOWN SIGNS IS NOT LIABLE FOR ANY ERRORS OVERLOOKED AFTER APPROVAL, AND ANY REMAKES REQUIRED TO CORRECT SUCH ERRORS WILL BE THE SOLE RESPONSIBILITY OF THE CLIENT.

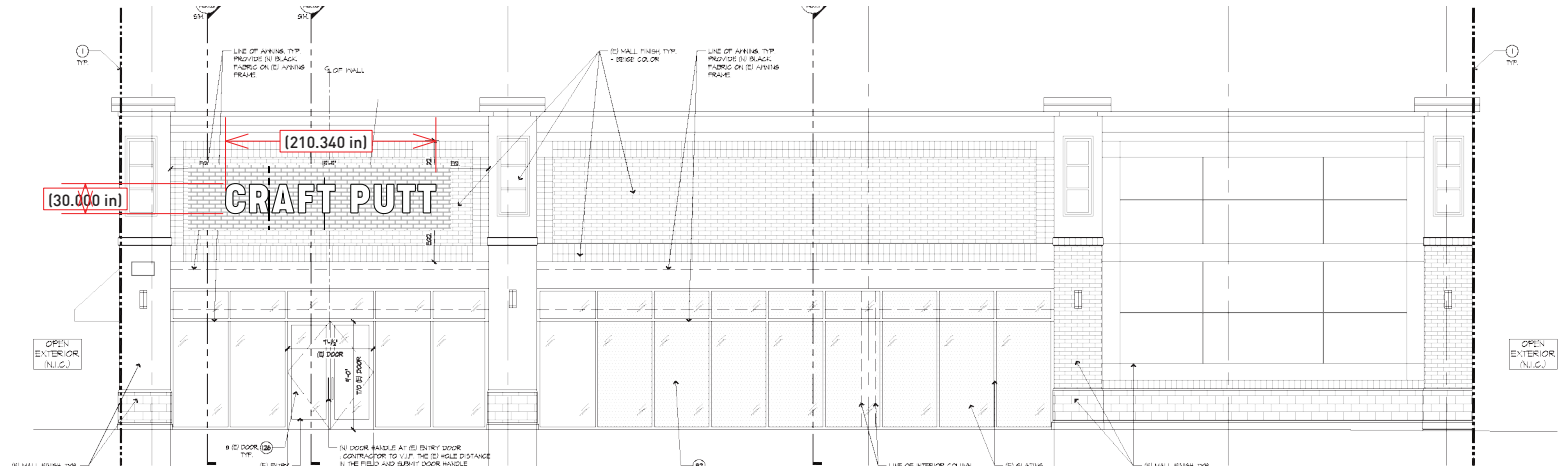
This drawing remains the exclusive property of Midtown Signs, LLC. It is submitted for your consideration in the purchase of the product(s) manufactured according to these plans. This design cannot be copied in whole or in part, reproduced, altered or exhibited in any manner without the expressed written permission of Midtown Signs, LLC. Exceptions are previously copyrighted artwork supplied by the client.

**MIDTOWN SIGNS**  
MIDTOWNSIGNS.COM

2416 SOUTH 8TH STREET  
KANSAS CITY, KS, USA  
816-561-7446  
913-766-1470  
SALES@MIDTOWNSIGNS.COM



QTY: 01



TENNANT SPACE: APPROX 11,500 SQ/FT



NORTH FACADE



FACADE: 2,953 sqft  
SIGN: 43.75 sqft  
COVERAGE: 1.5%

**ELECTRICAL NOTES**  
Power MUST be provided by Customer unless otherwise specified in writing.  
Access to back side of fascia is required for install. Each Sign location MUST have:  
1. PRIMARY ELECTRICAL OF 120V.  
2. J-BOX INSTALLED WITHIN 6 FT. OF SIGN  
Otherwise, Customer is responsible for the Power Connection to the Sign.

- A 1/4" White Acrylic Faces
- B 2.36" Returns, White Trimless Letterform Coil
- C 6MM ACM Backer
- D Prism Synergy Mini White LEDs, Power Supply
- E Direct Mount
- F

COLOR(s)  
1 WHITE  
2  
3  
4

SALESPERSON AUTHORIZATION:

Date: 03.11.2025

Client: Clifton Alexander

Company: Reactor, LLC

Drawn by: Josh Wilkinson

Salesperson: Dennis Baughman

Page: 2 of 4

o 17919

CUSTOMER AUTHORIZATION:

INSTALLATION:  
SUMMITFAIR  
840 NW Blue Pkwy  
Suite K101  
Lee's Summit, MO 64086

PRODUCTION RELEASE:

**ATTENTION:**

PLEASE THOROUGHLY REVIEW ALL DIMENSIONS, COLOR CODES, SPELLING, GRAMMAR, AND SIGN LOCATIONS PRIOR TO APPROVAL. MIDTOWN SIGNS IS NOT LIABLE FOR ANY ERRORS OVERLOOKED AFTER APPROVAL, AND ANY REMAKES REQUIRED TO CORRECT SUCH ERRORS WILL BE THE SOLE RESPONSIBILITY OF THE CLIENT.

This drawing remains the exclusive property of Midtown Signs, LLC. It is submitted for your consideration in the purchase of the product(s) manufactured according to these plans. This design cannot be copied in whole or in part, reproduced, altered or exhibited in any manner without the expressed written permission of Midtown Signs, LLC. Exceptions are previously copyrighted artwork supplied by the client.

**MIDTOWN SIGNS**  
MIDTOWNSIGNS.COM

2416 SOUTH 8TH STREET  
KANSAS CITY, KS, USA  
816-561-7446  
913-766-1470  
SALES@MIDTOWNSIGNS.COM



QTY: 01



FACADE: 2,760 sqft  
SIGN: 43.75 sqft  
COVERAGE: 1.6%

**ELECTRICAL NOTES**  
Power MUST be provided by Customer unless otherwise specified in writing.  
Access to back side of fascia is required for install. Each Sign location MUST have:  
1. PRIMARY ELECTRICAL OF 120V.  
2. J-BOX INSTALLED WITHIN 6 FT. OF SIGN  
Otherwise, Customer is responsible for the Power Connection to the Sign.

- A 1/4" White Acrylic Faces
- B Day Night Vinyl to Match Navy Color
- C 2.36" Returns, White Trimless Letterform Coil Painted
- D 6MM ACM Backer
- E Prism Synergy Mini White LEDs, Power Supply
- F Direct Mount

COLOR(s)

- 1 NAVY (PMS MATCH)
- 2
- 3
- 4

SALESPERSON AUTHORIZATION:

Date: 03.11.2025

Client: Clifton Alexander

Company: Reactor, LLC

Drawn by: Josh Wilkinson

Salesperson: Dennis Baughman

Page: 3 of 4

o 17919

TENNANT SPACE: APPROX 11,500 SQ/FT



CUSTOMER AUTHORIZATION:

INSTALLATION:  
SUMMITFAIR  
840 NW Blue Pkwy  
Suite K101  
Lee's Summit, MO 64086

PRODUCTION RELEASE:

**ATTENTION:**

PLEASE THOROUGHLY REVIEW ALL DIMENSIONS, COLOR CODES, SPELLING, GRAMMAR, AND SIGN LOCATIONS PRIOR TO APPROVAL. MIDTOWN SIGNS IS NOT LIABLE FOR ANY ERRORS OVERLOOKED AFTER APPROVAL, AND ANY REMAKES REQUIRED TO CORRECT SUCH ERRORS WILL BE THE SOLE RESPONSIBILITY OF THE CLIENT.

This drawing remains the exclusive property of Midtown Signs, LLC. It is submitted for your consideration in the purchase of the product(s) manufactured according to these plans. This design cannot be copied in whole or in part, reproduced, altered or exhibited in any manner without the expressed written permission of Midtown Signs, LLC. Exceptions are previously copyrighted artwork supplied by the client.

**MIDTOWN  
SIGNS**  
MIDTOWNSIGNS.COM

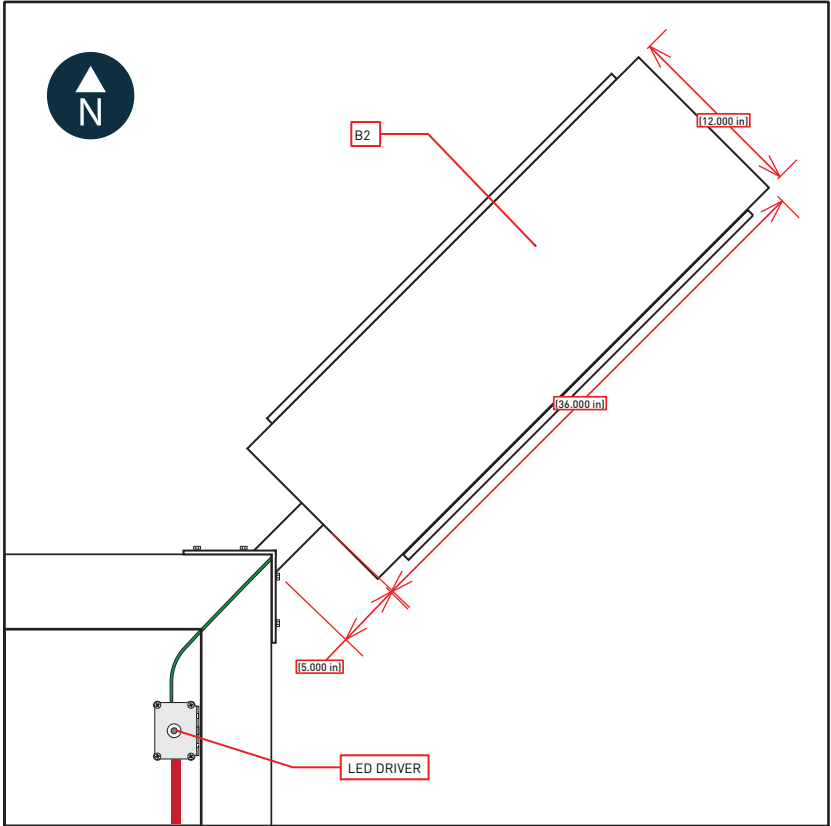
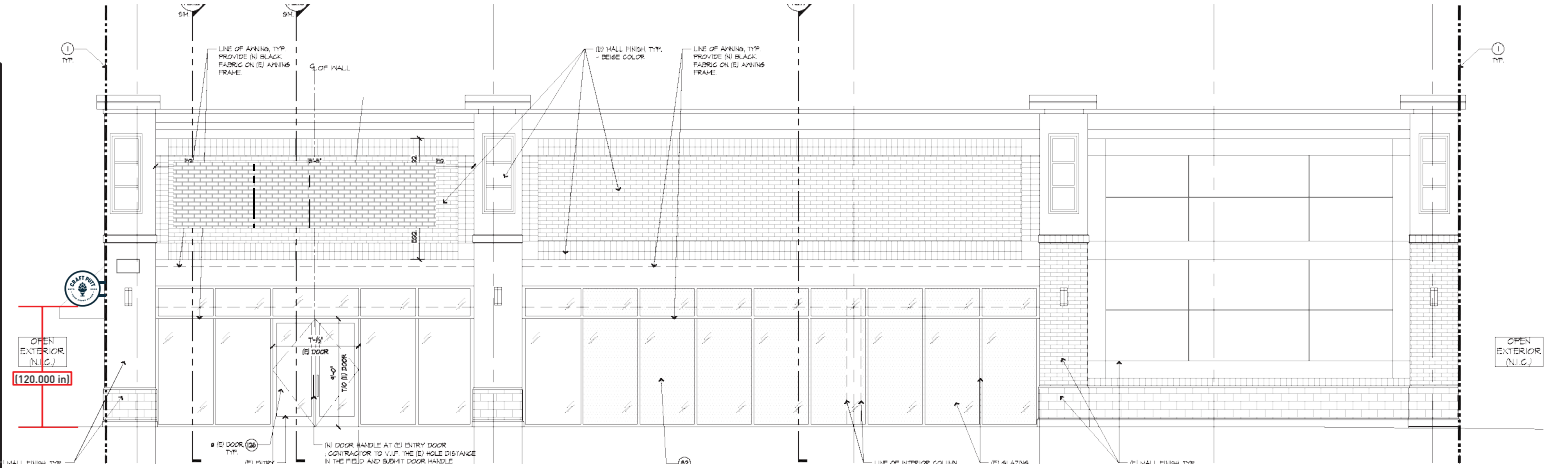
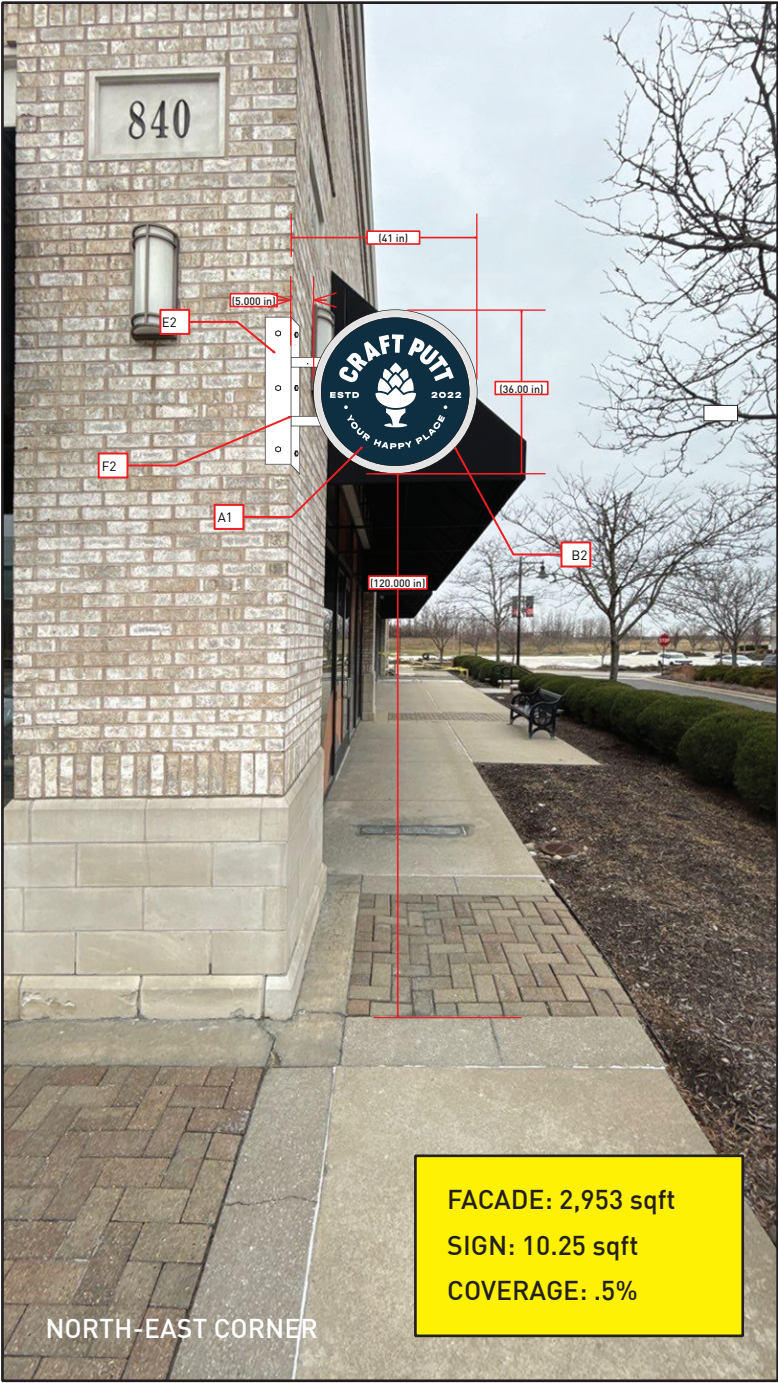
2416 SOUTH 8TH STREET  
KANSAS CITY, KS, USA  
816-561-7446  
913-766-1470  
SALES@MIDTOWNSIGNS.COM



QTY: 01

ELECTRICAL NOTES

Power MUST be provided by Customer unless otherwise specified in writing.  
Access to back side of fascia is required for install. Each Sign location MUST have:  
1. PRIMARY ELECTRICAL OF 120V.  
2. J-BOX INSTALLED WITHIN 6 FT. OF SIGN  
Otherwise, Customer is responsible for the Power Connection to the Sign.



- A .080 Aluminum Faces, Painted
- B .063 Retuns & Retainer, Painted
- C 1/2" Acrylic Push Thru Letter/Logo
- D Prism Synergy Mini White LEDS, LED Driver
- E 1/4" Plate Corner Bracket / Direct Mounted Painted
- F 2" Square Tube, Painted

- COLOR(s)
- 1 NAVY (PMS MATCH)
- 2 WHITE
- 3
- 4

SALESPERSON AUTHORIZATION:

Date: 03.11.2025

Client: Clifton Alexander

Company: Reactor, LLC

Drawn by: Josh Wilkinson

Salesperson: Dennis Baughman

Page: 4 of 4

o 17919

CUSTOMER AUTHORIZATION:

INSTALLATION:  
SUMMITFAIR  
840 NW Blue Pkwy  
Suite K101  
Lee's Summit, MO 64086

PRODUCTION RELEASE:

ATTENTION:

PLEASE THOROUGHLY REVIEW ALL DIMENSIONS, COLOR CODES, SPELLING, GRAMMAR, AND SIGN LOCATIONS PRIOR TO APPROVAL. MIDTOWN SIGNS IS NOT LIABLE FOR ANY ERRORS OVERLOOKED AFTER APPROVAL, AND ANY REMAKES REQUIRED TO CORRECT SUCH ERRORS WILL BE THE SOLE RESPONSIBILITY OF THE CLIENT.

This drawing remains the exclusive property of Midtown Signs, LLC. It is submitted for your consideration in the purchase of the product(s) manufactured according to these plans. This design cannot be copied in whole or in part, reproduced, altered or exhibited in any manner without the expressed written permission of Midtown Signs, LLC. Exceptions are previously copyrighted artwork supplied by the client.

MIDTOWN  
SIGNS  
MIDTOWNSIGNS.COM

2416 SOUTH 8TH STREET  
KANSAS CITY, KS, USA  
816-561-7446  
913-766-1470  
SALES@MIDTOWNSIGNS.COM