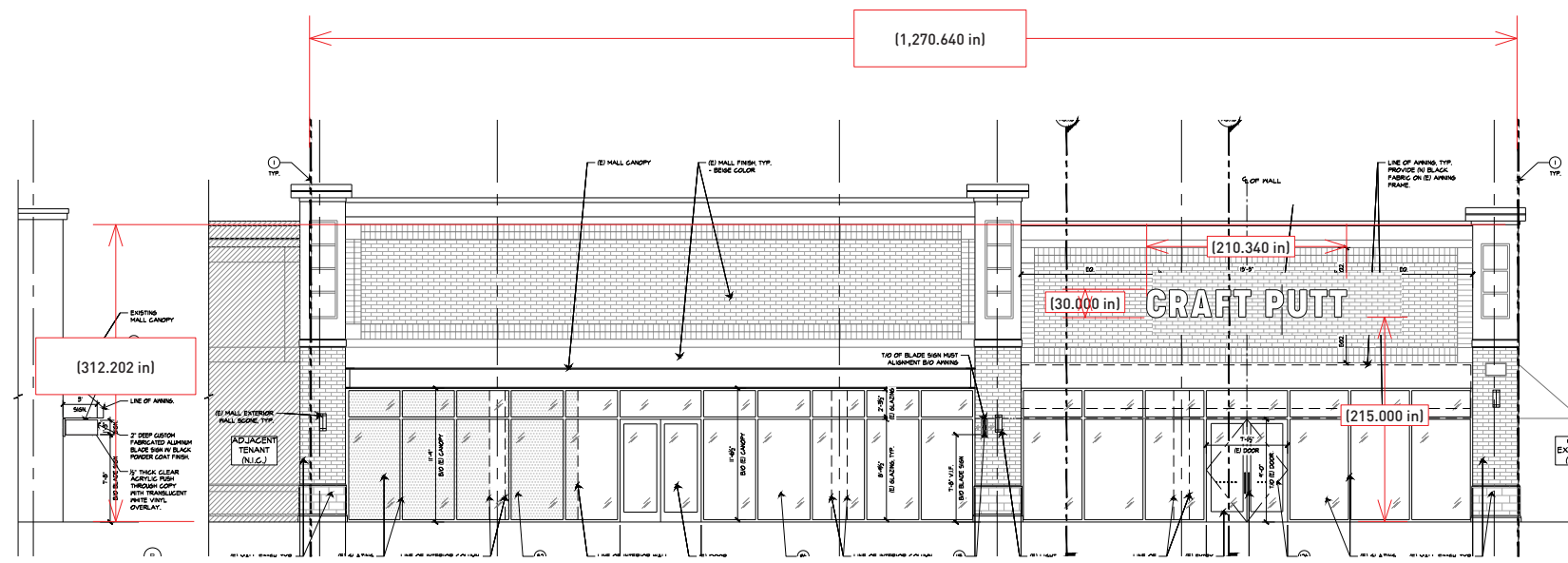
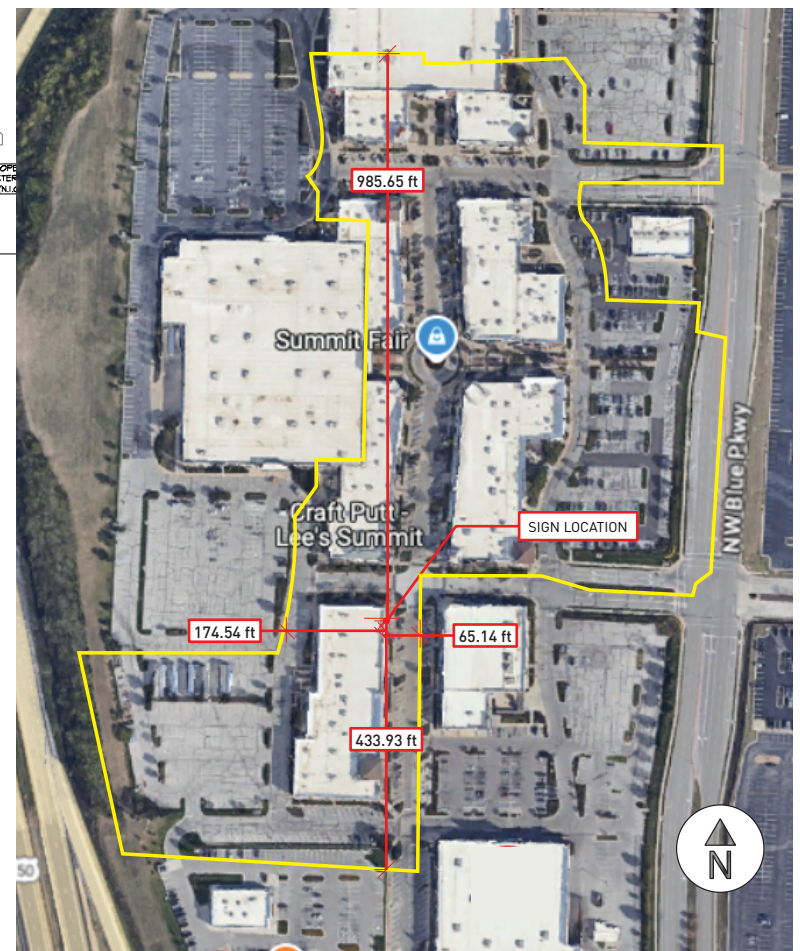


QTY: 01



TENNANT SPACE: APPROX 11,500 SQ/FT



FACADE: 2,760 sqft
SIGN: 43.75 sqft
COVERAGE: 1.6%

ELECTRICAL NOTES
 Power MUST be provided by Customer unless otherwise specified in writing. Access to back side of fascia is required for install. Each Sign location MUST have:
 1. PRIMARY ELECTRICAL OF 120V.
 2. J-BOX INSTALLED WITHIN 6 FT. OF SIGN
 Otherwise, Customer is responsible for the Power Connection to the Sign.

- A 1/4" White Acrylic Faces
- B 2.36" Returns, White Trimless Letterform Coil
- C 6MM ACM Backer
- D Prism Synergy Mini White LEDs, Power Supply
- E Direct Mount
- F

- COLOR(s)
- 1 WHITE
 - 2
 - 3
 - 4

SALESPERSON AUTHORIZATION:

Date: 03.06.2025

Client: Clifton Alexander

Company: Reactor, LLC

Drawn by: Josh Wilkinson

Salesperson: Dennis Baughman

Page: 1 of 4

o 17919

CUSTOMER AUTHORIZATION:

INSTALLATION:
 SUMMITFAIR
 840 NW Blue Pkwy
 Suite K101
 Lee's Summit, MO 64086

PRODUCTION RELEASE:

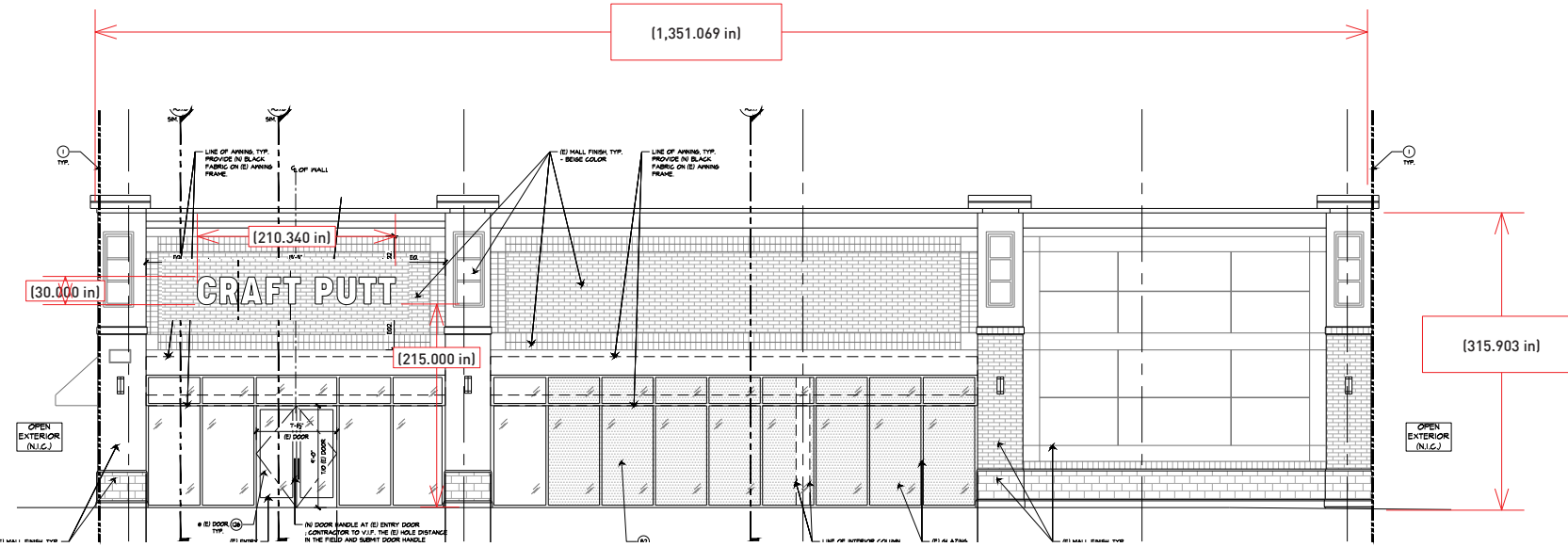
ATTENTION:
 PLEASE THOROUGHLY REVIEW ALL DIMENSIONS, COLOR CODES, SPELLING, GRAMMAR, AND SIGN LOCATIONS PRIOR TO APPROVAL. MIDTOWN SIGNS IS NOT LIABLE FOR ANY ERRORS OVERLOOKED AFTER APPROVAL, AND ANY REMAKES REQUIRED TO CORRECT SUCH ERRORS WILL BE THE SOLE RESPONSIBILITY OF THE CLIENT.

This drawing remains the exclusive property of Midtown Signs, LLC. It is submitted for your consideration in the purchase of the product(s) manufactured according to these plans. This design cannot be copied in whole or in part, reproduced, altered or exhibited in any manner without the expressed written permission of Midtown Signs, LLC. Exceptions are previously copyrighted artwork supplied by the client.

MIDTOWN SIGNS
 MIDTOWNSIGNS.COM

2416 SOUTH 8TH STREET
 KANSAS CITY, KS, USA
 816-561-7446
 913-766-1470
 SALES@MIDTOWNSIGNS.COM

QTY: 01



TENANT SPACE: APPROX 11,500 SQ/FT



NORTH FACADE



FACADE: 2,953 sqft
SIGN: 43.75 sqft
COVERAGE: 1.5%

ELECTRICAL NOTES
 Power MUST be provided by Customer unless otherwise specified in writing. Access to back side of fascia is required for install. Each Sign location MUST have:
 1. PRIMARY ELECTRICAL OF 120V.
 2. J-BOX INSTALLED WITHIN 6 FT. OF SIGN
 Otherwise, Customer is responsible for the Power Connection to the Sign.

- A 1/4" White Acrylic Faces
- B 2.36" Returns, White Trimless Letterform Coil
- C 6MM ACM Backer
- D Prism Synergy Mini White LEDs, Power Supply
- E Direct Mount
- F

- COLOR(s)
- 1 WHITE
 - 2
 - 3
 - 4

SALESPERSON AUTHORIZATION:

Date: 03.06.2025

Client: Clifton Alexander

Company: Reactor, LLC

Drawn by: Josh Wilkinson

Salesperson: Dennis Baughman

Page: 2 of 4

o 17919

CUSTOMER AUTHORIZATION:

INSTALLATION:
 SUMMITFAIR
 840 NW Blue Pkwy
 Suite K101
 Lee's Summit, MO 64086

PRODUCTION RELEASE:

ATTENTION:
 PLEASE THOROUGHLY REVIEW ALL DIMENSIONS, COLOR CODES, SPELLING, GRAMMAR, AND SIGN LOCATIONS PRIOR TO APPROVAL. MIDTOWN SIGNS IS NOT LIABLE FOR ANY ERRORS OVERLOOKED AFTER APPROVAL, AND ANY REMAKES REQUIRED TO CORRECT SUCH ERRORS WILL BE THE SOLE RESPONSIBILITY OF THE CLIENT.

This drawing remains the exclusive property of Midtown Signs, LLC. It is submitted for your consideration in the purchase of the product(s) manufactured according to these plans. This design cannot be copied in whole or in part, reproduced, altered or exhibited in any manner without the expressed written permission of Midtown Signs, LLC. Exceptions are previously copyrighted artwork supplied by the client.

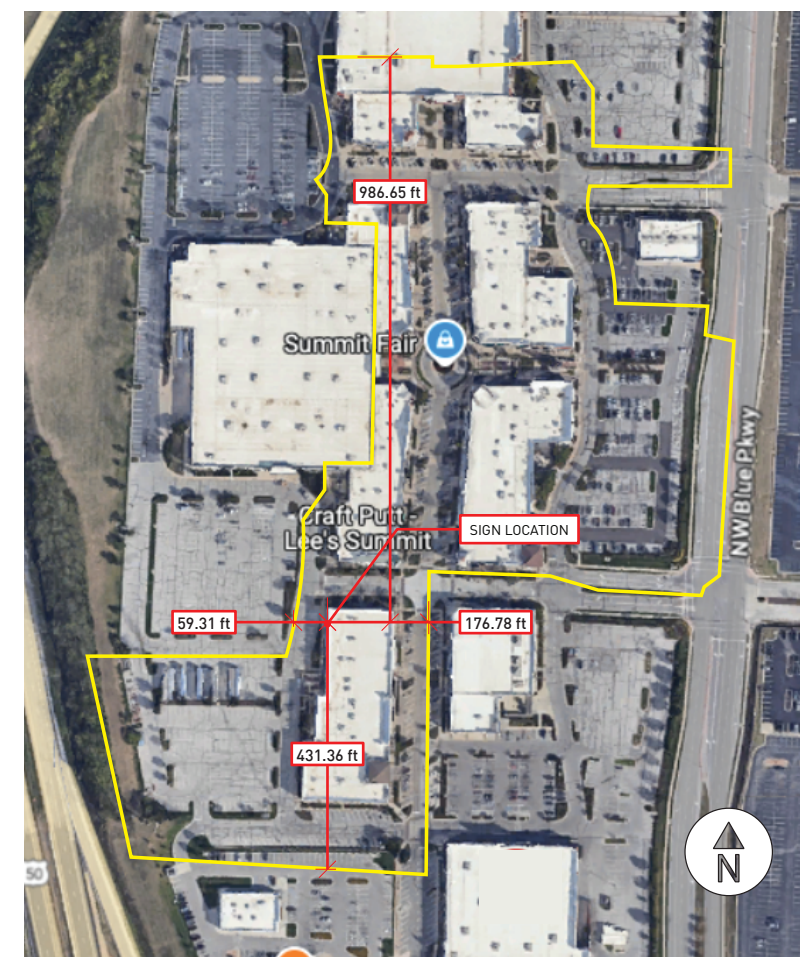
MIDTOWN SIGNS
 MIDTOWNSIGNS.COM

2416 SOUTH 8TH STREET
 KANSAS CITY, KS, USA
 816-561-7446
 913-766-1470
 SALES@MIDTOWNSIGNS.COM

QTY: 01



TENANT SPACE: APPROX 11,500 SQ/FT



FACADE: 2,760 sqft
SIGN: 43.75 sqft
COVERAGE: 1.6%

- A .080 Aluminum Faces, Painted
- B 2" Welded Returns, Painted
- C 6MM ACM Backer w/ Clips
- D Direct Mounted
- E
- F

- COLOR(s)
- 1 NAVY (PMS MATCH)
 - 2
 - 3
 - 4

SALESPERSON AUTHORIZATION:

Date: 03.06.2025

Client: Clifton Alexander

Company: Reactor, LLC

Drawn by: Josh Wilkinson

Salesperson: Dennis Baughman

Page: 3 of 4

o 17919

CUSTOMER AUTHORIZATION:

INSTALLATION:
SUMMITFAIR
840 NW Blue Pkwy
Suite K101
Lee's Summit, MO 64086

PRODUCTION RELEASE:

ATTENTION:
PLEASE THOROUGHLY REVIEW ALL DIMENSIONS, COLOR CODES, SPELLING, GRAMMAR, AND SIGN LOCATIONS PRIOR TO APPROVAL. MIDTOWN SIGNS IS NOT LIABLE FOR ANY ERRORS OVERLOOKED AFTER APPROVAL, AND ANY REMAKES REQUIRED TO CORRECT SUCH ERRORS WILL BE THE SOLE RESPONSIBILITY OF THE CLIENT.

This drawing remains the exclusive property of Midtown Signs, LLC. It is submitted for your consideration in the purchase of the product(s) manufactured according to these plans. This design cannot be copied in whole or in part, reproduced, altered or exhibited in any manner without the expressed written permission of Midtown Signs, LLC. Exceptions are previously copyrighted artwork supplied by the client.

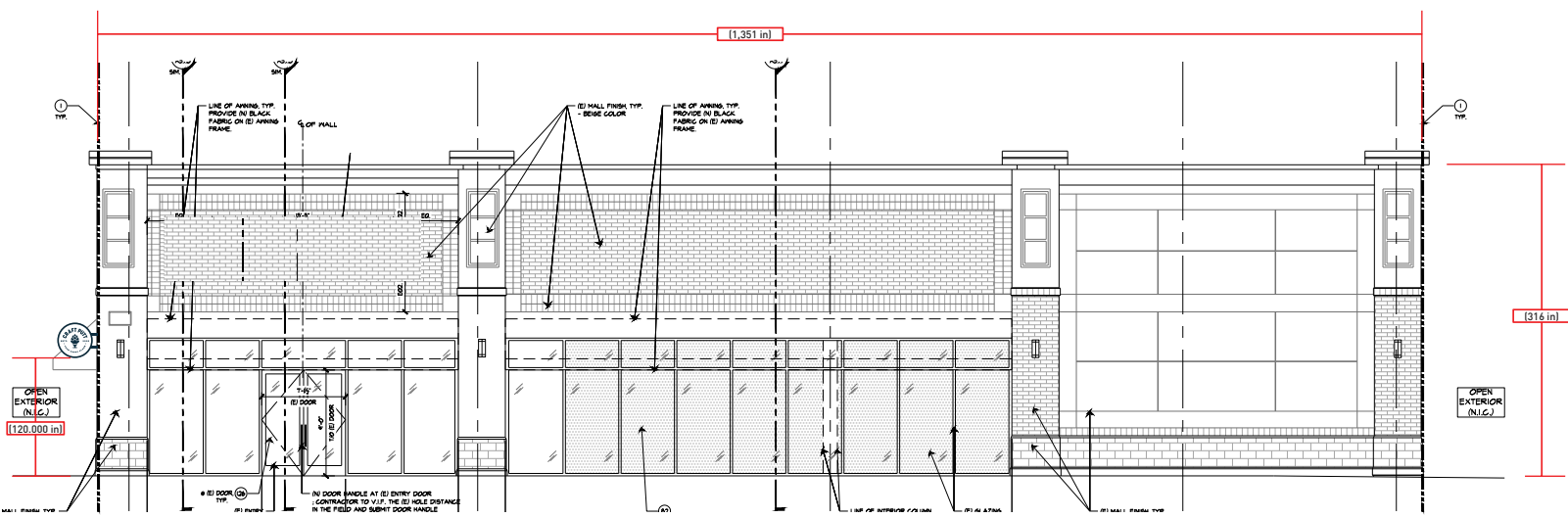
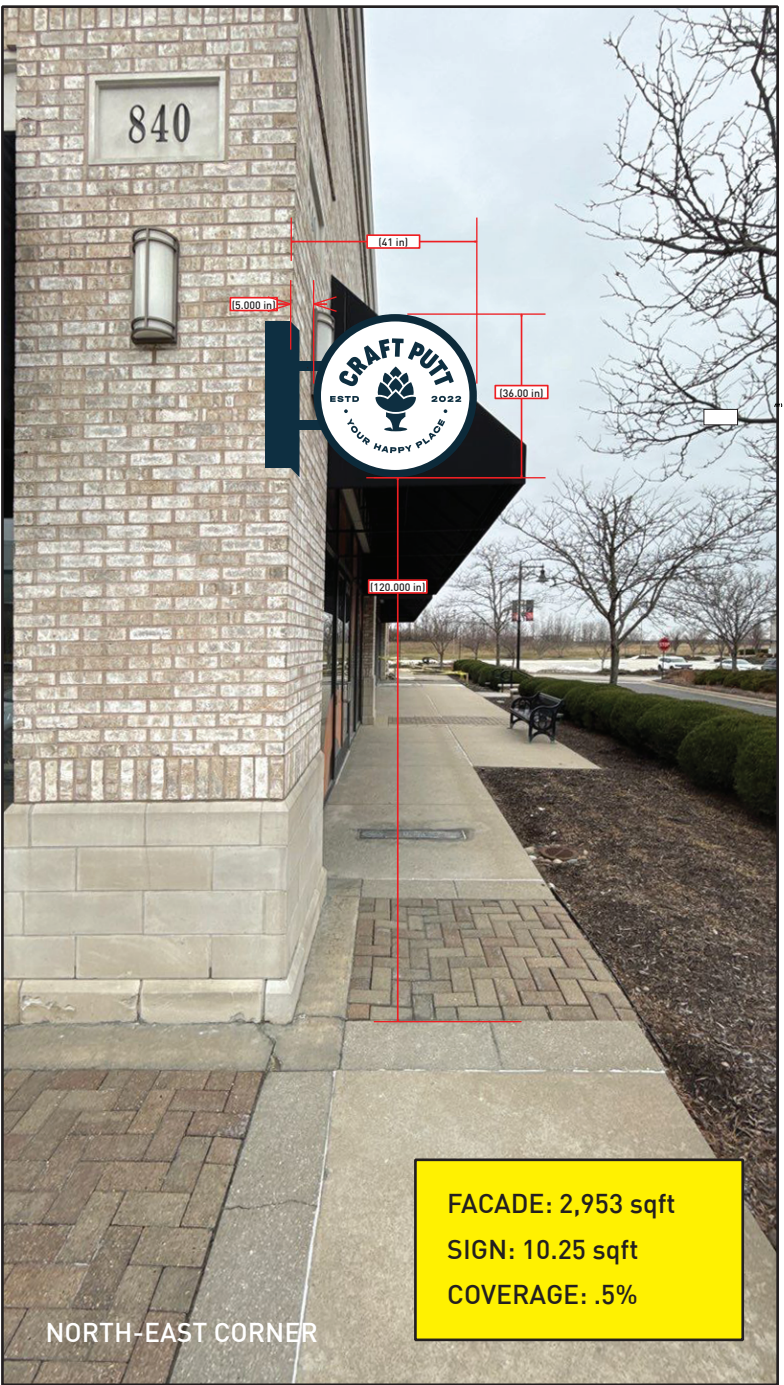
MIDTOWN SIGNS
MIDTOWNSIGNS.COM

2416 SOUTH 8TH STREET
KANSAS CITY, KS, USA
816-561-7446
913-766-1470
SALES@MIDTOWNSIGNS.COM

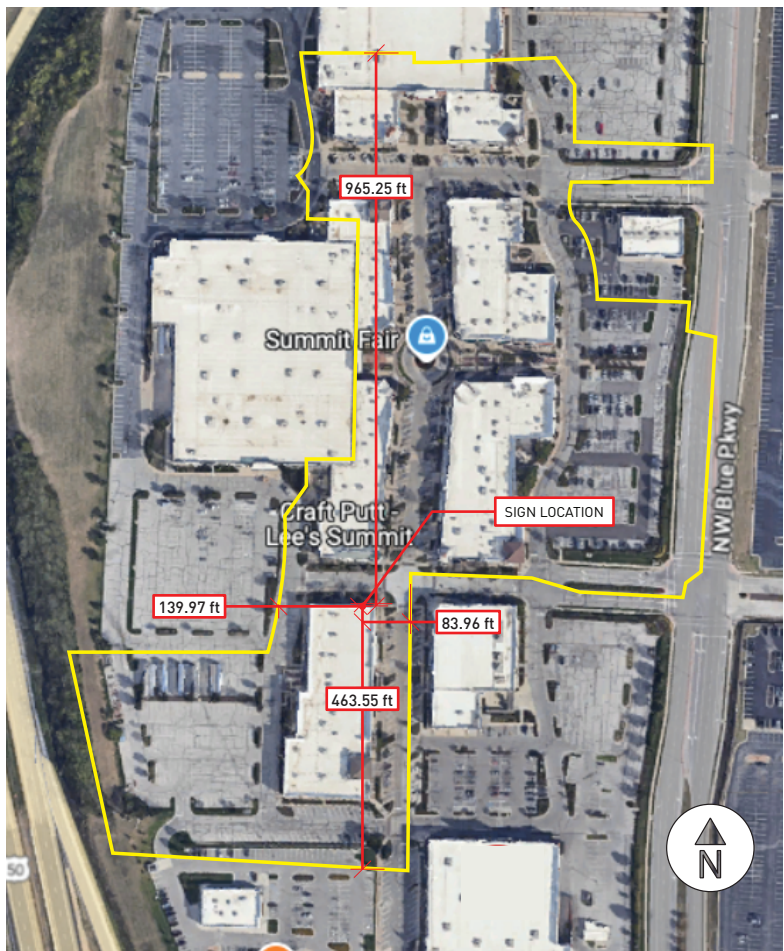
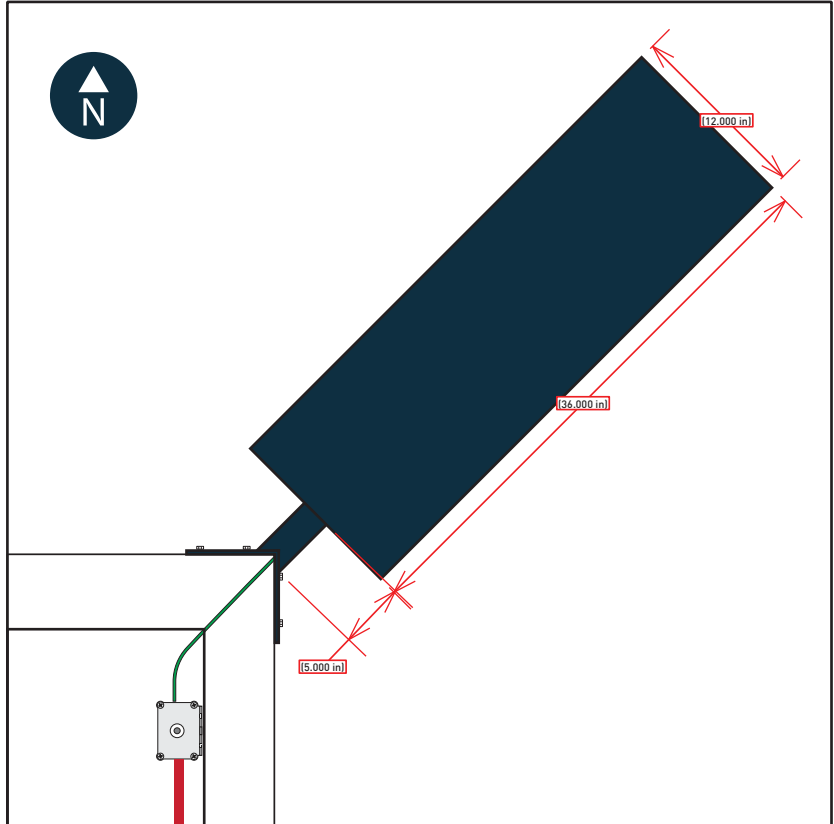
QTY: 01

ELECTRICAL NOTES

Power MUST be provided by Customer unless otherwise specified in writing. Access to back side of fascia is required for install. Each Sign location MUST have:
1. PRIMARY ELECTRICAL OF 120V.
2. J-BOX INSTALLED WITHIN 6 FT. OF SIGN
Otherwise, Customer is responsible for the Power Connection to the Sign.

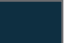





TENNANT SPACE: APPROX 11,500 SQ/FT



- A .080 Aluminum Faces, Painted
- B .063 Retuns & Retainer, Painted
- C 1/2" Acrylic Push Thru Letter/Logo w/ Vinyl Applied to Face
- D Prism Synergy Mini White LEDs, LED Driver
- E 1/4" Plate Bracket / Direct Mounted
- F 2" Square Tube

COLOR(s)

- 1  NAVY (PMS MATCH)
- 2 
- 3 
- 4 

SALESPERSON AUTHORIZATION:

Date: 03.06.2025

Client: Clifton Alexander

Company: Reactor, LLC

Drawn by: Josh Wilkinson

Salesperson: Dennis Baughman

Page: 4 of 4

o 17919

CUSTOMER AUTHORIZATION:

INSTALLATION:
SUMMITFAIR
840 NW Blue Pkwy
Suite K101
Lee's Summit, MO 64086

PRODUCTION RELEASE:

ATTENTION:
PLEASE THOROUGHLY REVIEW ALL DIMENSIONS, COLOR CODES, SPELLING, GRAMMAR, AND SIGN LOCATIONS PRIOR TO APPROVAL. MIDTOWN SIGNS IS NOT LIABLE FOR ANY ERRORS OVERLOOKED AFTER APPROVAL, AND ANY REMAKES REQUIRED TO CORRECT SUCH ERRORS WILL BE THE SOLE RESPONSIBILITY OF THE CLIENT.

This drawing remains the exclusive property of Midtown Signs, LLC. It is submitted for your consideration in the purchase of the product(s) manufactured according to these plans. This design cannot be copied in whole or in part, reproduced, altered or exhibited in any manner without the expressed written permission of Midtown Signs, LLC. Exceptions are previously copyrighted artwork supplied by the client.

MIDTOWN SIGNS
MIDTOWNSIGNS.COM

2416 SOUTH 8TH STREET
KANSAS CITY, KS, USA
816-561-7446
913-766-1470
SALES@MIDTOWNSIGNS.COM