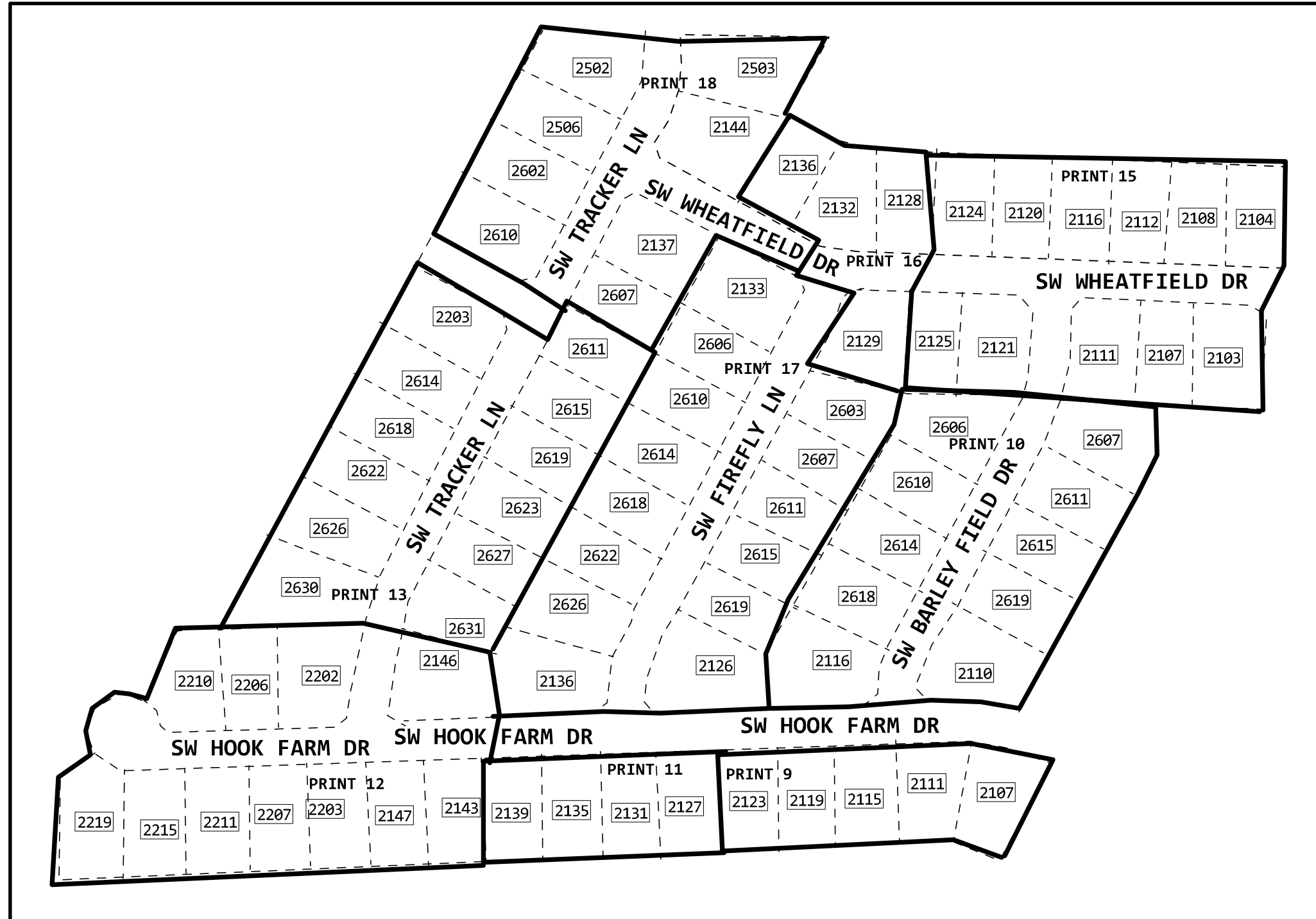


VICINITY MAP



ECD: 03/03/2025

1 845C  
1 READY

HH PROTECTION

2 845C  
1 T&M

MATERIAL LIST

- PLACE 1 EVOLV4/100TIP(PPA) 845C
- PLACE 1 EVOLV 6/400OTIP(PPA) 845C
- PLACE 1 EVOLV 6/300OTIP(PPA) 845C
- PLACE 10 EVOLV 6/100TIP (PPA) 845C
- PLACE 4 EVOLV8/100TIP(PPA) 845C
- PLACE 2 EVOLV 12/100TIP (PPA) 845C
- PLACE 19 PEDESTAL (PPA) 845C
- PLACE 24 PEDESTAL (PPA) 8645C
- PLACE 904' 5BQ2MT-072 (PPA) 845C
- PLACE 825' 5BQ2MT-216 (PPA) 845C
- PLACE 1065' FNAP-CBL-024-T (PPA) 845C
- PLACE 1321' FNAP-CBL-048-T (PPA) 845C
- PLACE 1898' FNAP-CBL-144-T (PPA) 845C
- PLACE 500' TRACERWIRE (PPA) 845C
- PLACE 4529' INNERDUCT1-1.5 (PPA) 845C
- PLACE 2449' INNERDUT1-1.25 (PPA) 8645C
- PLACE 315' INNERDUT1-1.5 (PPA) 8645C
- PLACE 4 HH-3X5X3 (PPA) 845C

PLEASE SET HH'S TO NOT CONFLICT WITH FUTURE SIDEWALKS AND PLACE ON PROPEERTY LINE TO NOT CONFLICT WITH FUTURE DRIVES.

Contractor Name: PEARCESERVICES-SA302X

BURY/BORE ALL THE CABLES 36" DEPTH UNLESS SPECIFIED

PERMIT REQ. BY LEE'S SUMMIT MO ALL U/E & R/W TO BE SURVRyed & STAKED PRIOR TO ANY PLACEMENT

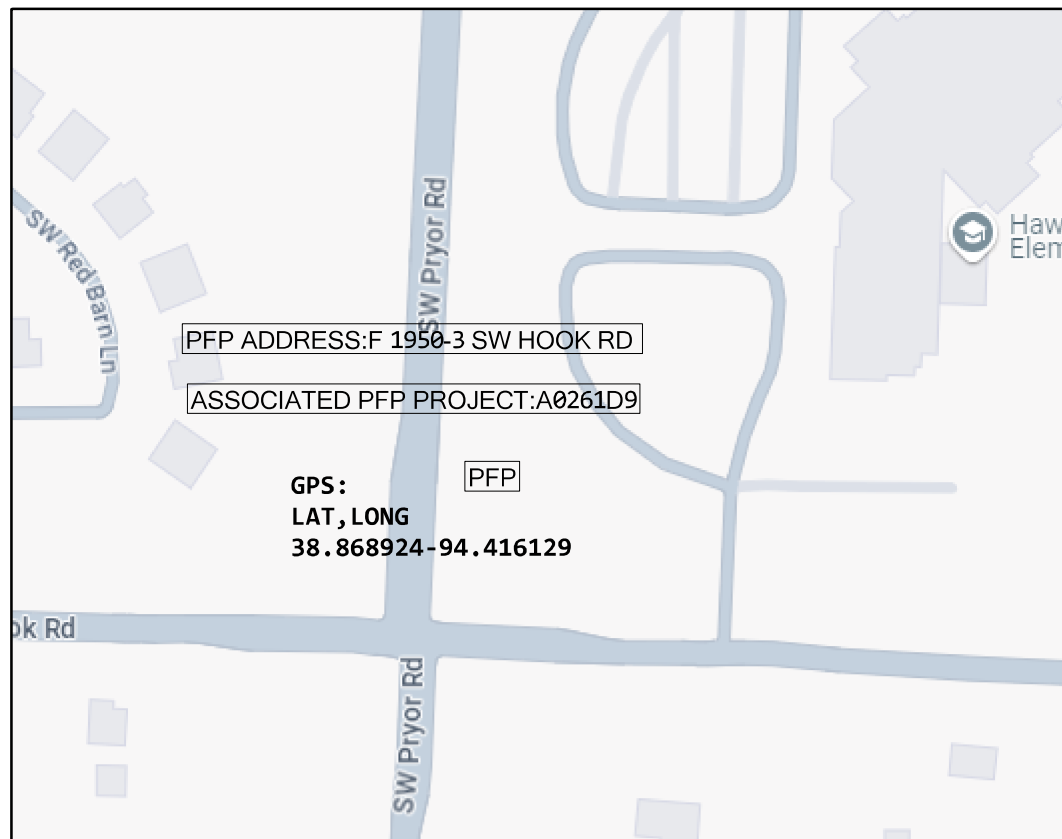
**BEFORE YOU DIG!**  
**2 Days Prior Call 811**

CAUTION !!! LOCATE ALL UNDERGROUND FACILITIES BEFORE DIGGING

WC NAME LEE'S SUMMIT  
CILLI:KSCYMO41  
NPANNX:816524  
DA:3215ZC

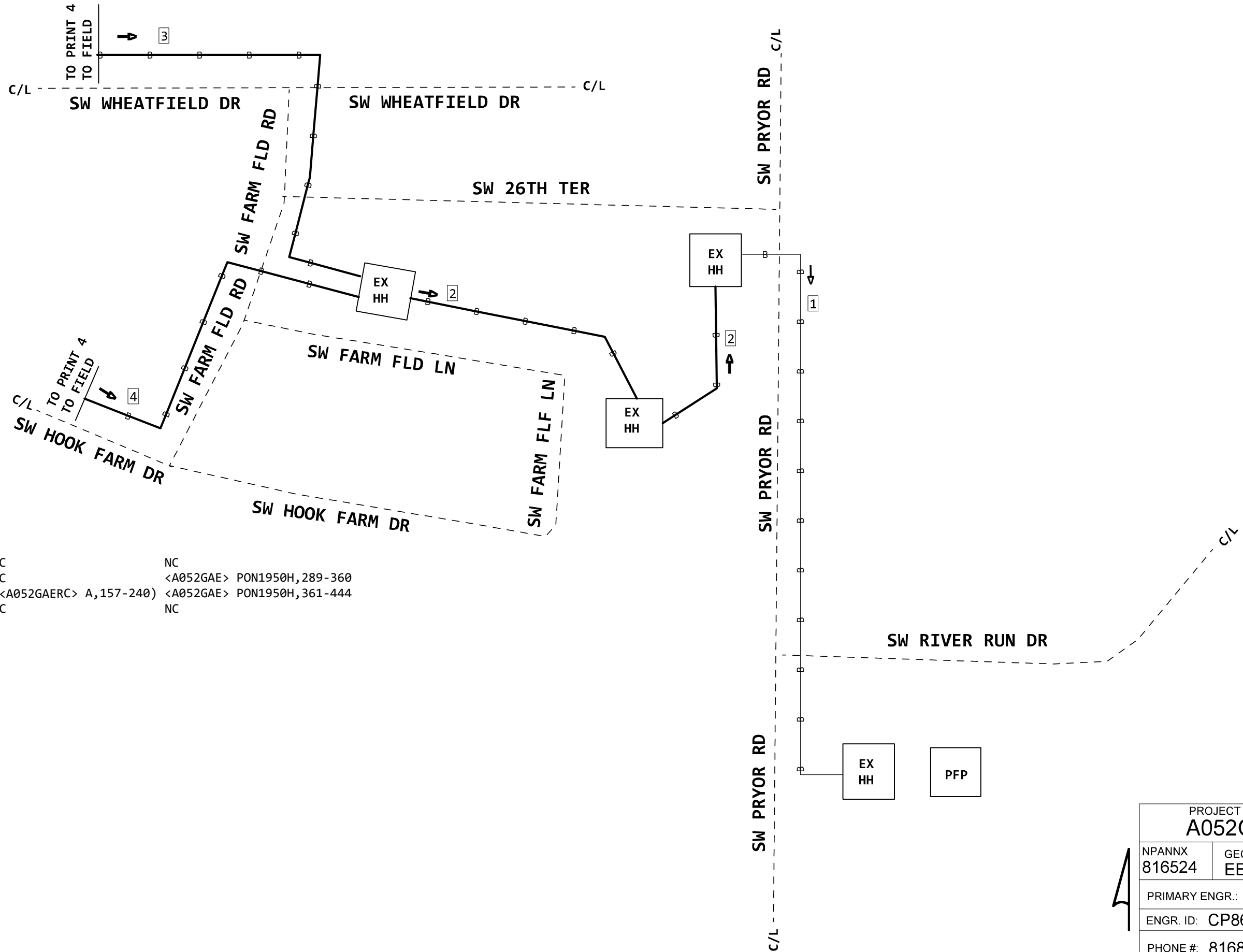
LIVING UNIT:79

PROJECT # <b>A052GAE</b>		DATE SVC REQ'D 03/03/2025
NPANNX 816524	GEO LOC EE4160	CLLI KSCYMO41
PRIMARY ENGR.: PEDERSEN, CHARLES		
ENGR. ID: CP861N	PERMIT REQ'D.	Y
PHONE #: 8168133667	PRINT 1 OF 18	



XGS-PON Optics (Choose Class N1 or Class N2 from drop-down list)	Class N2
Feeder Fiber Length (kft) from CO or Remote OLT	3.6
Avg. Feeder Splicing Interval (kft) - This is not the number of splices	0.7
OptiTip Connectors in lieu of splices (Choose 0-2 from drop-down list)	2
FiberWise - Add SFCM7 (Choose Yes or No from drop-down list)	No
FiberWise - Add SFCM6 (Choose Yes or No from drop-down list)	No
Distribution Length (kft) - PFP to FST	6.0
Total Length	9.5
Splitter Type	1x64
Max. Feeder + Splitter EML - Engineered Measured Loss (dBm) for 1310 nm downstream from distribution side of PFP splitter to OSP fiber panel at OLT location (Location "Q" to "H" on Optical Budget Diagram)	22.4
Max. Feeder + Splitter EML - Engineered Measured Loss (dBm) for 1550 nm upstream from OSP fiber panel at OLT location to distribution side of PFP splitter (Location "H" to "Q" on Optical Budget Diagram)	22.3
Distribution F2 EML - PFP to FST for 1310nm	3.2
Distribution F2 EML - PFP to FST for 1550nm*	3.1
Total EML OLT to FST for 1310nm	25.5
Total EML OLT to FST for 1550nm*	25.3

PROJECT # <b>A052GAE</b>		DATE SVC REQ'D 03/03/2025
NPANNX 816524	GEO LOC EE4160	CLLI KSCYMO41
PRIMARY ENGR.: PEDERSEN, CHARLES		
ENGR. ID: CP861N	PERMIT REQ'D.	Y
PHONE #: 8168133667	PRINT 2 OF 18	



1 (2023) 845C 2765'  
 5BQ2MR-288  
 PON1950H, 1-84 NC NC  
 (<A025785> A, 85-156) NC (<A052GAE> PON1950H, 289-360  
 (PON1950H, 157-240) (<A052GAERC> A, 157-240) (<A052GAE> PON1950H, 361-444  
 PON1950H, 241-288 NC NC

2 (PPA) 845C715'  
 5BQ2MT-216  
 PON1950H, 241-444  
 C, 205-216

3 (PPA) 845C 1898'  
 FNAP-CBL-144-T  
 A, 1-12  
 PON1950H, 241-372

4 (PPA) 845C 904'  
 5BQ2MT-072  
 PON1950H, 373-444

PROJECT # <b>A052GAE</b>		DATE SVC REQ'D 03/03/2025	
NPANNX 816524	GEO LOC EE4160	CLLI KSCYMO41	
PRIMARY ENGR.: PEDERSEN, CHARLES			
ENGR. ID: CP861N		PERMIT REQ'D.	Y
PHONE #: 8168133667		PRINT 3 OF 18	

3 (PPA) 845C  
FNAP-CBL-144-T  
A,1-12  
PON1950H,241-372

4 (PPA) 845C  
5BQ2MT-072  
PON1950H,373-444

5 (PPA) 845C 618'  
FNAP-CBL-024-T  
PON1950H,325-348

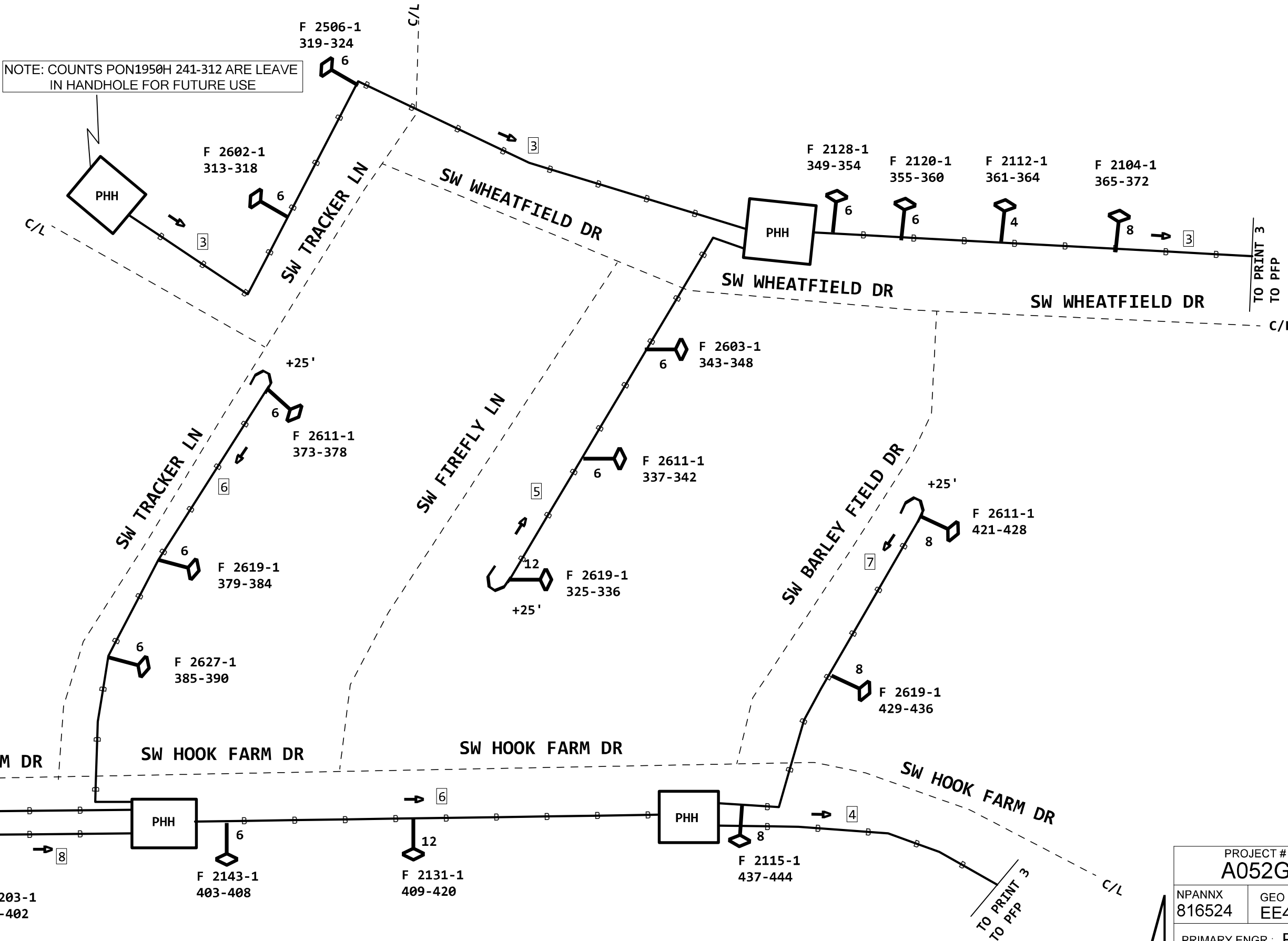
6 (PPA) 845C 1321'  
FNAP-CBL-048-T  
PON1950H,373-420

7 (PPA) 845C 447'  
FNAP-CBL-024-T  
PON1950H,421-444

8 (PPA) 845C 300'  
TAIL  
PON1950H,397-402

9 (PPA) 845C 400'  
TAIL  
PON1950H,391-396

NOTE: COUNTS PON1950H 241-312 ARE LEAVE  
IN HANDHOLE FOR FUTURE USE



PROJECT # <b>A052GAE</b>		DATE SVC REQ'D 03/03/2025
NPANNX 816524	GEO LOC EE4160	CLLI KSCYMO41
PRIMARY ENGR.: PEDERSEN, CHARLES		
ENGR. ID: CP861N	PERMIT REQ'D.	Y
PHONE #: 8168133667	PRINT 4 OF 18	

1 (2023) 845C 2765'  
 5BQ2MR-288  
 PON1950H,1-84 NC  
 (<A025785> A,85-156) NC  
 (PON1950H,157-240) (<A052GAERC> A,157-240) <A052GAE> PON1950H,289-360  
 PON1950H,241-288 NC

845C  
 3  
 5BQ2MT-216  
 110 TPLAC  
 10 (PPA) 845C 110'  
 5BQ2MT-216  
 PON1950H,289-444  
 C,157-216

11 (2023) 845C 50'  
 INV  
 OUT PON1950H,289-576

12 (2023) 845C 50'  
 INV  
 OUT PON1950H,1-288

PLACED ON PROJECT: A021ME6

13 (PPA) 85C  
 5BQ2MT24-100LP  
 L2009,305-308  
 C,5-24

14 (2023) 845C 50'  
 INV  
 C,1-72

15 (2023) 845C 50'  
 INV  
 D,1-2  
 OLT1390HR,15-16  
 D,5-48

16 (2023) 845C 500'  
 5BQ2MT-216  
 PON1950H,85-240  
 B,157-216

17 (2023) 845C 350'  
 5BQ2MT-024  
 B,1-2  
 OLT1390HR,15-18  
 B,7-12  
 OLT1390HR,25-36

PLACED ON PROJECT: A021ME6

18 (PPA) 845C  
 SR-549JRR-072  
 A,1-4  
 L2006,5-8  
 OLT1390HR,1-12  
 L2006,21-24  
 F,13-18  
 A,37-38  
 L2009,231-236  
 A,45-48  
 B,1-6  
 OLT1390HR,19-24  
 B,7-24

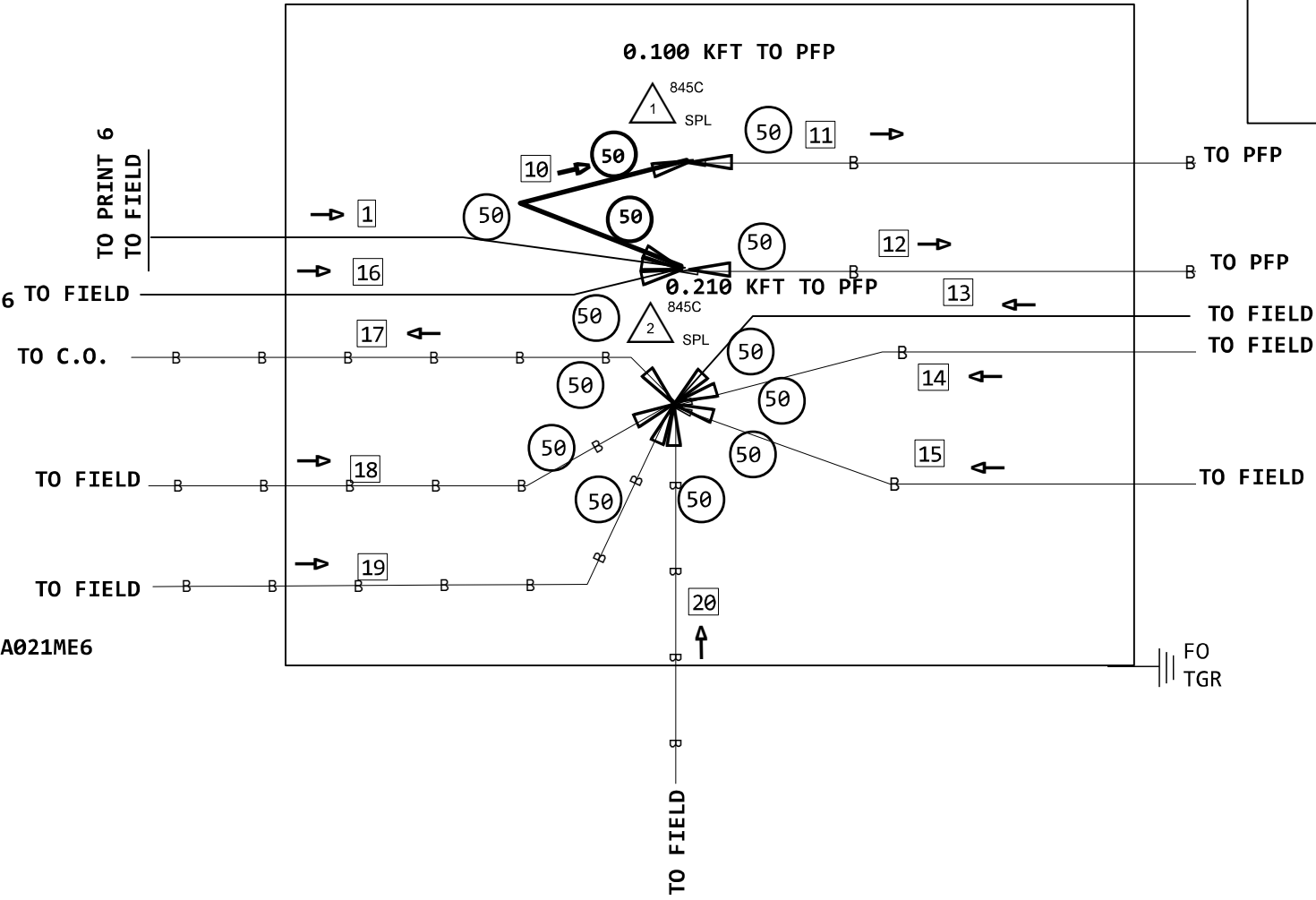
PLACED ON PROJECT: A021ME6 TO FIELD

19 (PPA) 845C  
 SR-549JRR-144  
 A,1-24  
 OLT1390HR,25-60  
 A,61-74  
 L2009,217-226  
 A,85-96  
 L2009,237-240  
 A,101-144

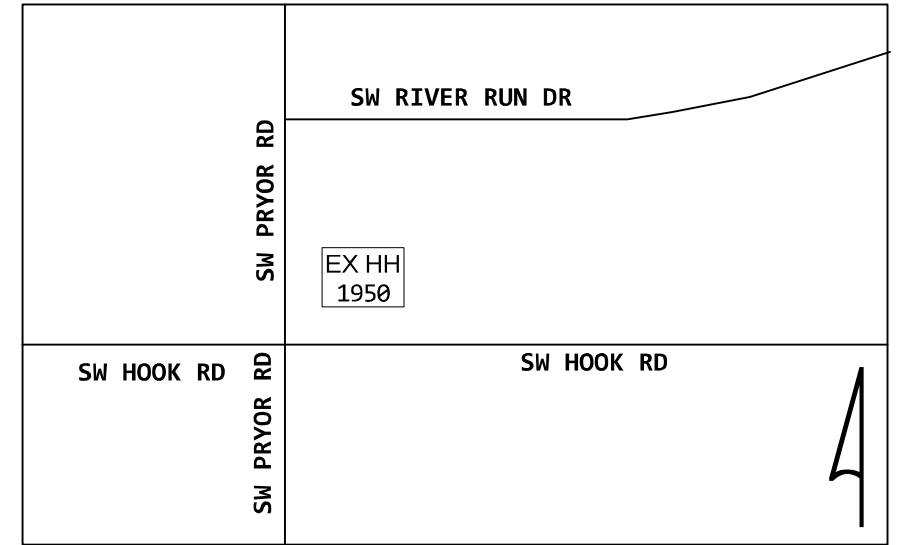
PLACED ON PROJECT: A021ME6

20 (PPA) 845C  
 5BQ2MT-216  
 OLT1390HR,1-24  
 L2009,291-294  
 B,29-48  
 OLT1390HR,49-60  
 OLT1390HR,25-36  
 L2009,217-226  
 A,11-12  
 L2009,305-308  
 A,17-20  
 L2009,237-240  
 OLT1390HR,37-48  
 L2009,253-256  
 C,41-42  
 C,43-43  
 B,116-144  
 A,1-4  
 L2006,5-8  
 B,9-20  
 L2006,21-24  
 A,25-38  
 L2009,231-236  
 A,45-48  
 B,193-216

F 1950 SH  
 HH-48X96X48 (2023) 4C  
 4 X 8 X 4 = 128  
 FID:100202303



LOCATION MAP



PROJECT # <b>A052GAE</b>		DATE SVC REQ'D 03/03/2025	
NPANNX 816524	GEO LOC EE4160	CLLI KSCYMO41	
PRIMARY ENGR.: PEDERSEN, CHARLES			
ENGR. ID: CP861N		PERMIT REQ'D.	Y
PHONE #: 8168133667		PRINT 5 OF 18	

**1** (2023) 845C 2765'  
 5BQ2MR-288  
 PON1950H,1-84 NC  
 (<A025785> A,85-156) NC  
 (PON1950H,157-240) (<A052GAERC> A,157-240) <A052GAE> PON1950H,289-360  
 PON1950H,241-288 NC <A052GAE> PON1950H,361-444  
 NC

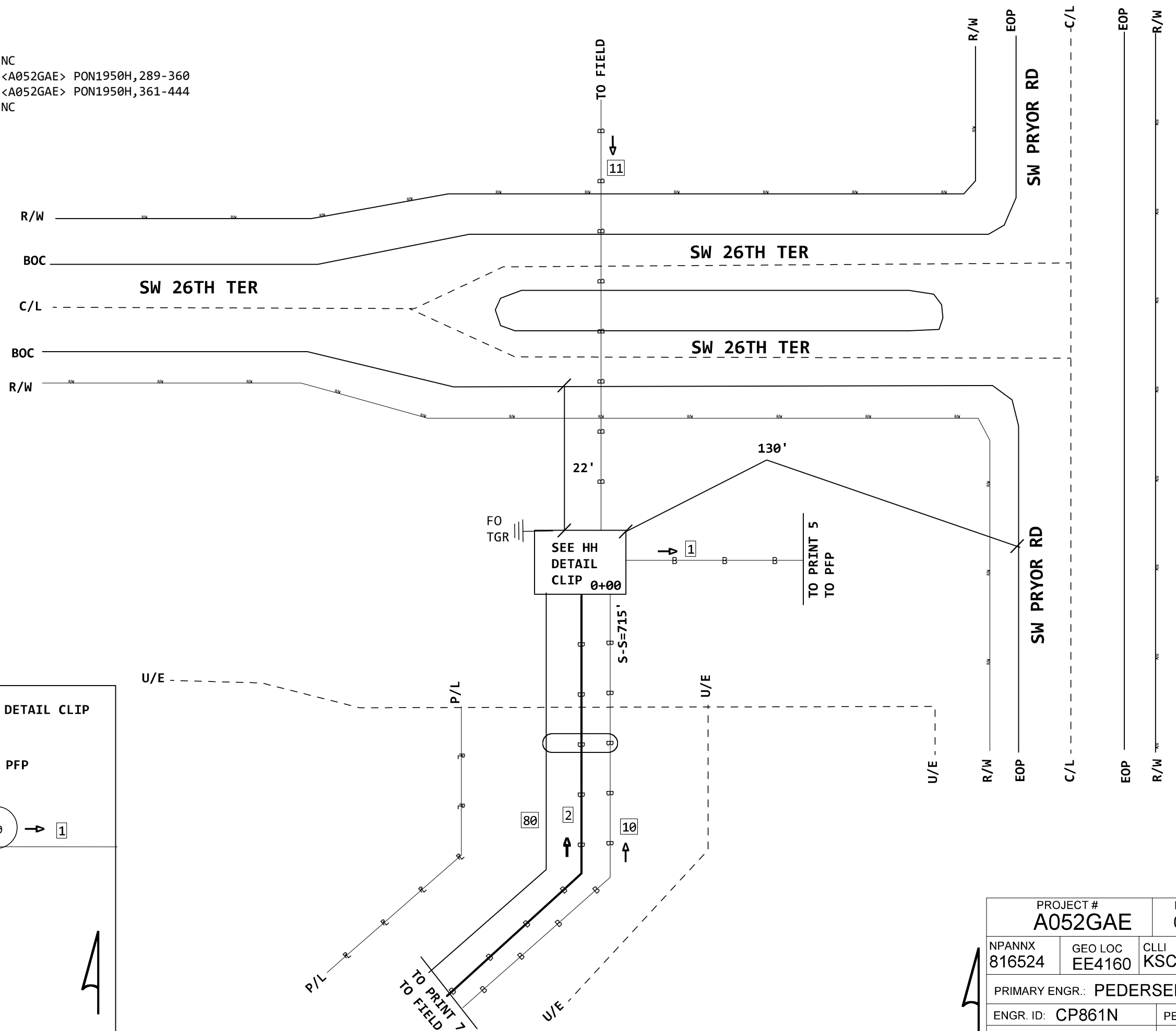
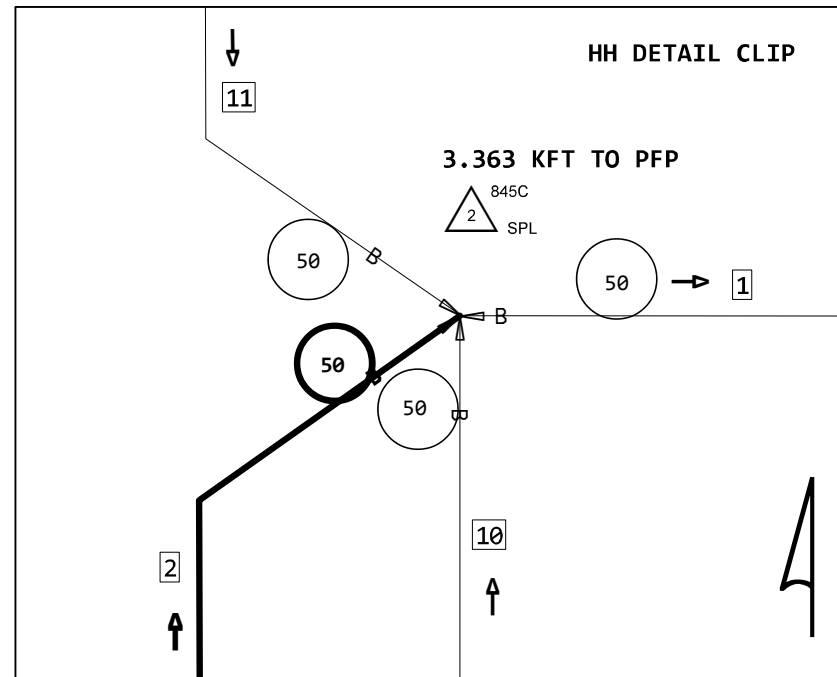
**2** (PPA) 845C 715'  
 5BQ2MT-216  
 PON1950H,241-444  
 C,205-216

**10** (2023) 845C 211'  
 5BQ2MT-144  
 PON1950H,1-80  
 B,81-144

**11** (2023) 845C  
 5B92MT-024  
 B,1-8  
 PON1950H,81-84  
 B,13-24

**80** 211' INNERDUCT1-3" 845C

OPP 2609 PR-EMS  
 HH-30X48X36 (2023) 845C  
 2.5 X 4 X 3 = 30  
 FID:100019117



PROJECT # <b>A052GAE</b>		DATE SVC REQ'D 03/03/2025
NPANNX 816524	GEO LOC EE4160	CLLI KSCYMO41
PRIMARY ENGR.: PEDERSEN, CHARLES		
ENGR. ID: CP861N	PERMIT REQ'D.	Y
PHONE #: 8168133667	PRINT 6 OF 18	

2 (PPA) 845C  
5BQ2MT-216  
PON1950H, 241-444  
C, 205-216

10 (2023) 845C 211'  
5BQ2MT-144  
PON1950H, 1-80  
B, 81-144

11 (2023) 845C 404'  
5BQ2MT-048  
PON1950H, 25-66  
C, 43-48

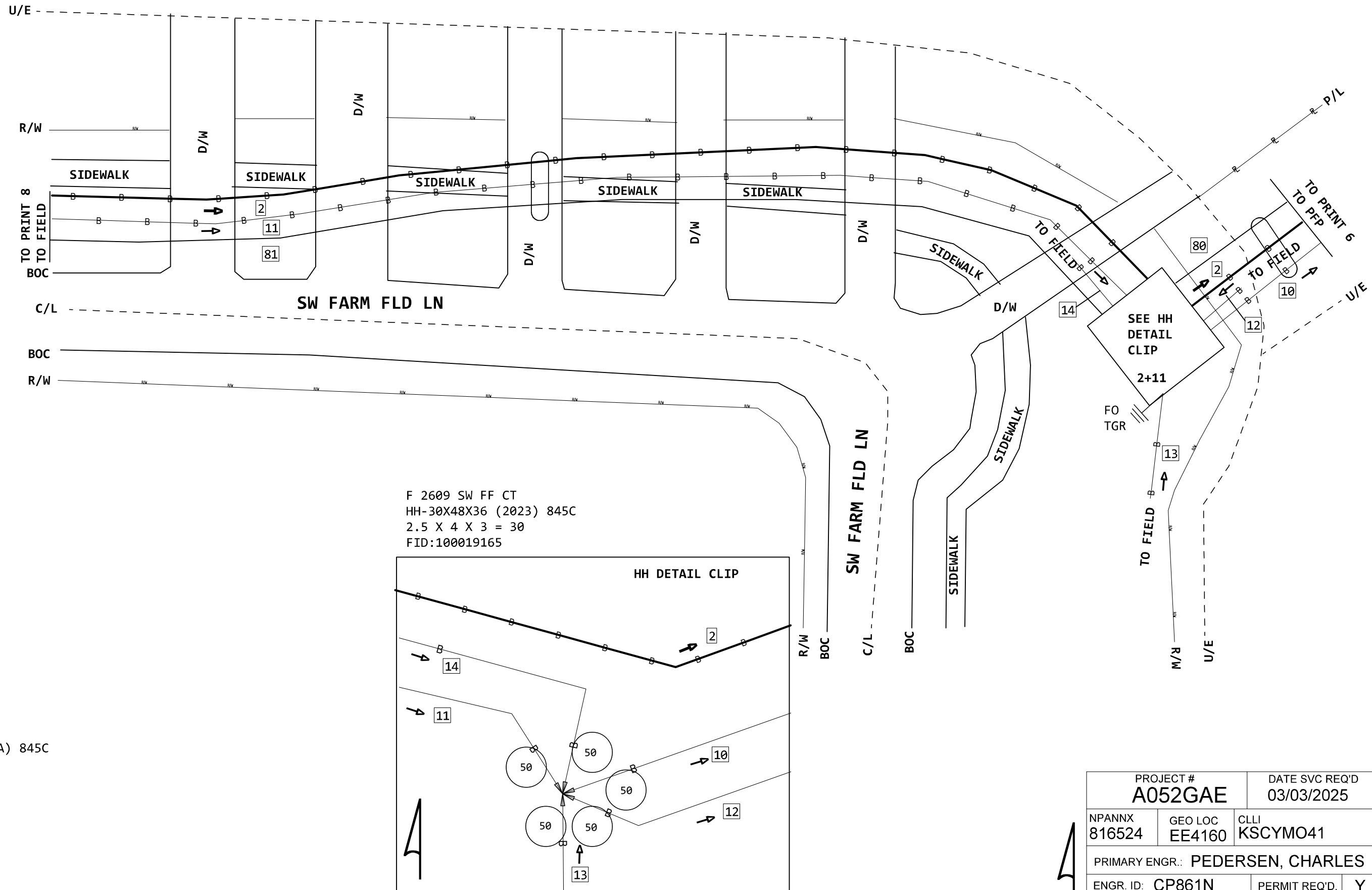
12 (2023) 845C 9'  
5BQ2MT-024  
PON1950H, 73-80  
A, 81-96

13 (2023) 845C 644'  
5BQ2MT-024  
PON1950H, 1-24

14 (2023) 845C 109'  
5B92MT-024  
PON1950H, 67-72

80 INNERDUCT1-3" 845C

81 404' INNERDUCT1-2" (PPA) 845C



F 2609 SW FF CT  
HH-30X48X36 (2023) 845C  
2.5 X 4 X 3 = 30  
FID:100019165

PROJECT # <b>A052GAE</b>		DATE SVC REQ'D 03/03/2025
NPANNX 816524	GEO LOC EE4160	CLLI KSCYMO41
PRIMARY ENGR.: PEDERSEN, CHARLES		
ENGR. ID: CP861N	PERMIT REQ'D.	Y
PHONE #: 8168133667	PRINT 7 OF 18	

NOTE: INTERCEPT EXISTING INNERDUCT WITH PROPOSED INNERDUCT @1+78

2 (PPA) 845C  
5BQ2MT-216  
PON1950H, 241-444  
C, 205-216

845C 845C  
2 CONT-PL-CABLE 1 FNAP-CBL-144-T  
526 PIOC DT 1898 IDUC

3 (PPA) 845C 1898'  
FNAP-CBL-144-T  
A, 1-12  
PON1950H, 241-372

845C 845C  
4 CONT-PL-CABLE 3 5BQ2MT-072  
228 PIOC DT 904 IDUC

4 (PPA) 845C 904'  
5BQ2MT-072  
PON1950H, 373-444

11 (2023) 845C 404'  
5BQ2MT-048  
PON1950H, 25-66  
C, 43-48

15 (2023) 845C 549'  
5BQ2MT-024  
PON1950H, 25-42  
A, 43-48

16 (2023) 845C 261'  
5BQ2MT-012  
PON1950H, 43-54

17 (2023) 845C 165'  
5B92MT-024  
PON1950H, 61-66

18 (2023) 845C 9'  
5B92MT-024  
PON1950H, 55-60

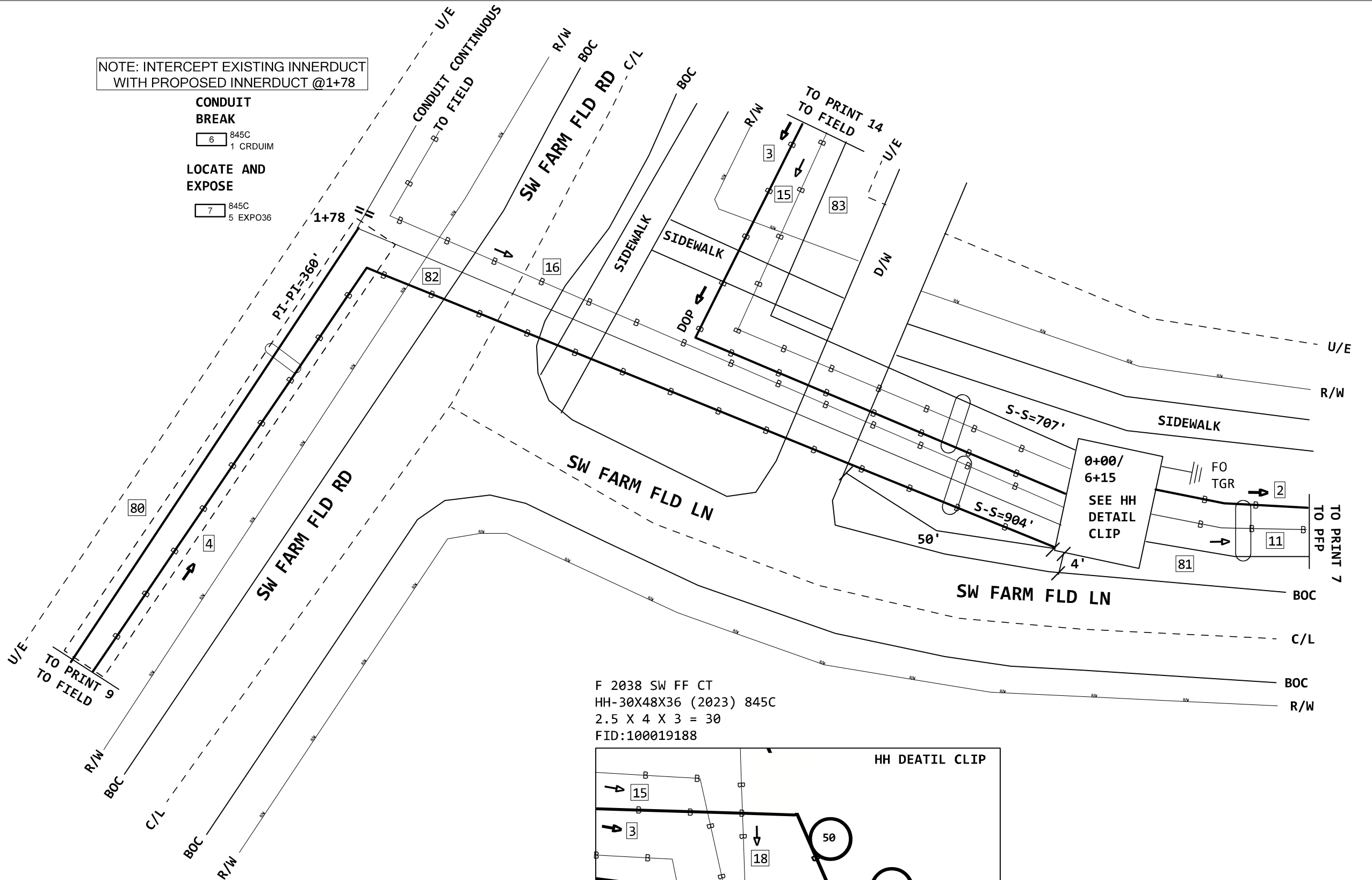
80 626' INNERDUCT1-1.5" (PPA) 845C

81 INNERDUCT1-2" 845C

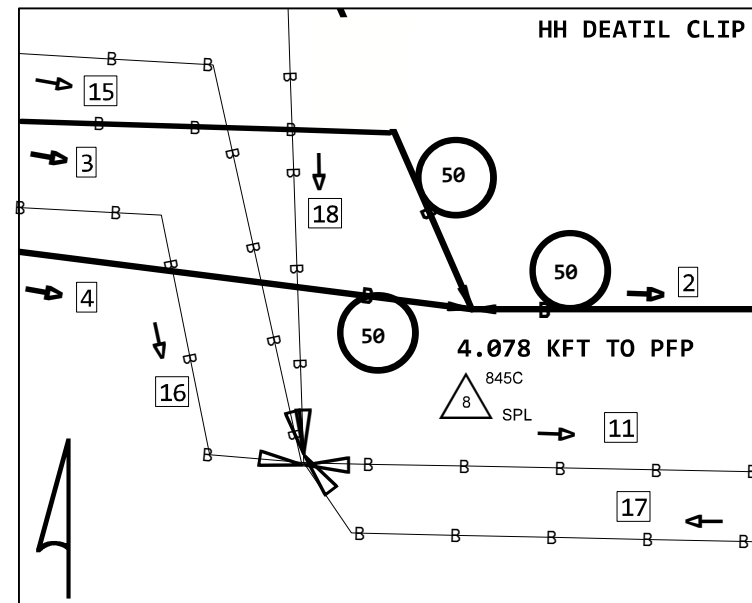
82 178' INNERDUCT1-2" 845C

83 476' INNERDUCT1-2" 845C

CONDUIT BREAK  
6 845C 1 CRDUIM  
LOCATE AND EXPOSE  
7 845C 5 EXPO36



F 2038 SW FF CT  
HH-30X48X36 (2023) 845C  
2.5 X 4 X 3 = 30  
FID:100019188

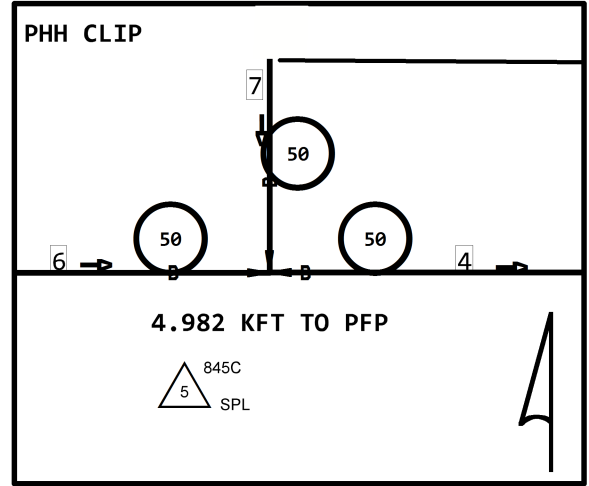


PROJECT # <b>A052GAE</b>		DATE SVC REQ'D 03/03/2025
NPANNX 816524	GEO LOC EE4160	CLLI KSCYMO41
PRIMARY ENGR.: PEDERSEN, CHARLES		
ENGR. ID: CP861N	PERMIT REQ'D.	Y
PHONE #: 8168133667	PRINT 8 OF 18	



- PRINT 8
- 4 (PPA) 845C  
5BQ2MT-072  
PON1950H, 373-444
- 1 845C  
FNAP-CBL-024-T  
447 IDUC
- 7 (PPA) 845C 447'  
FNAP-CBL-024-I  
PON1950H, 421-444
- 2 845C  
FNAP-CBL-048-T  
1321 IDUC
- 6 (PPA) 845C 1321'  
FNAP-CBL-048-I  
PON1950H, 373-420

TIER 15  
HH 2115 HOK FRM  
HH-3X5X3 (PPA) 845C  
3 X 5 X 3 = 45  
FID:104556082



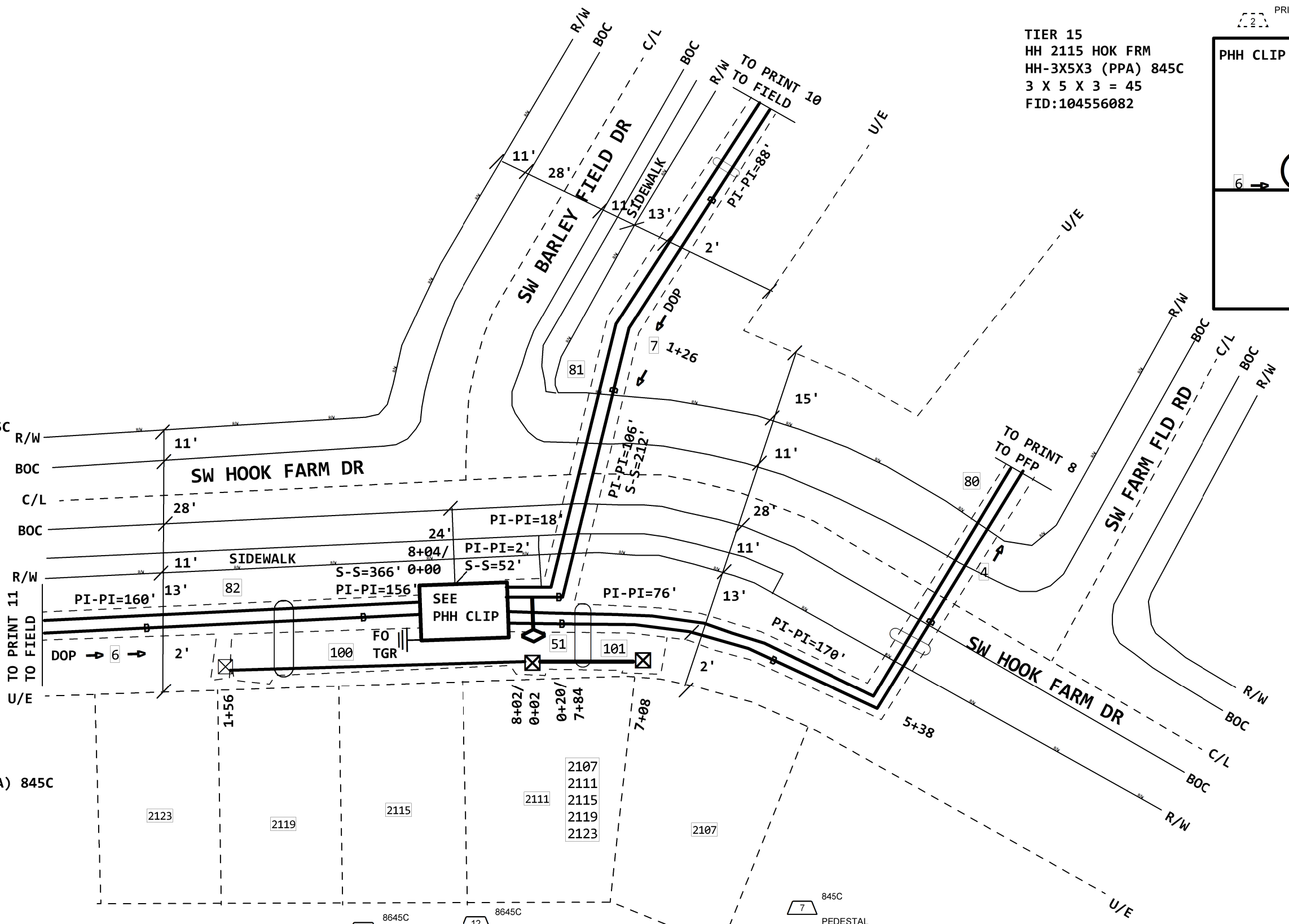
- PRINT 8
- 80 INNERDUCT1-1.5" (PPA) 845C

- 13 845C  
INNERDUCT1-1.5  
20 PULLBK
- 3 845C  
INNERDUCT1-1.5  
352 DBOR
- 81 372' INNERDUCT1-1.5" (PPA) 845C
- 4 845C  
INNERDUCT1-1.5  
618 DBOR
- 82 618' INNERDUCT1-1.5" (PPA) 845C

- 9 8645C  
INNERDUCT1-1.25  
158 PULLBK
- 11 8645C  
PEDESTAL  
1 PLAC
- 100 158' INNERDUCT1-1.25" (PPA) 8645C

- 10 8645C  
INNERDUCT1-1.25  
94 PULLBK
- 12 8645C  
PEDESTAL  
1 PLAC
- 101 94' INNERDUCT1-1.25" (PPA) 8645C

- 7 845C  
PEDESTAL  
1 PLAC
- 6 845C  
EVOLV8/100TIP  
1 PLAC
- 8 845C  
1 TESTP
- 51 5.034 KFT TO PFP  
F 2115-1 SW HOOK FARM DR  
EVOLV8/100TIP (PPA) 845C  
PON1950H, 437-444



PROJECT # <b>A052GAE</b>		DATE SVC REQ'D 03/03/2025
NPANNX 816524	GEO LOC EE4160	CLLI KSCYMO41
PRIMARY ENGR.: PEDERSEN, CHARLES		
ENGR. ID: CP861N	PERMIT REQ'D.	Y
PHONE #: 8168133667	PRINT 9 OF 18	

PRINT 9  
 7 (PPA) 845C  
 FNAP-CBL-024-T  
 PON1950H,421-444

PRINT 9  
 3,13  
 81 INNERDUCT1-1.5" (PPA) 845C

8 8645C  
 INNERDUCT1-1.5  
 76 DBOR  
 12 8645C  
 PEDESTAL  
 1 PLAC

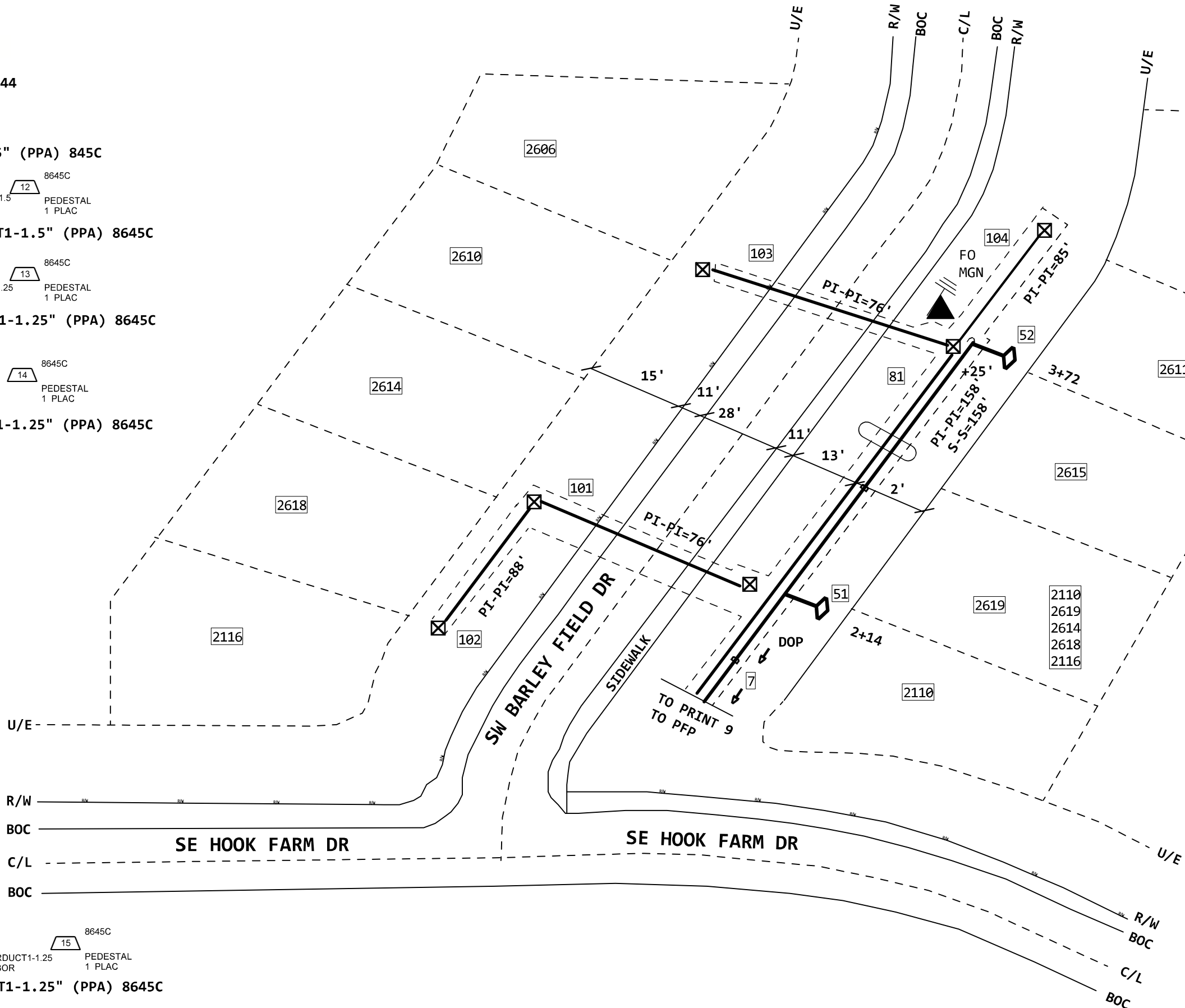
101 76' INNERDUCT1-1.5" (PPA) 8645C

10 8645C  
 INNERDUCT1-1.25  
 88 DBOR  
 13 8645C  
 PEDESTAL  
 1 PLAC

102 88' INNERDUCT1-1.25" (PPA) 8645C

9 8645C  
 INNERDUCT1-1.25  
 76 DBOR  
 14 8645C  
 PEDESTAL  
 1 PLAC

103 76' INNERDUCT1-1.25" (PPA) 8645C



5 845C  
 1 TESTP  
 7 845C  
 1 MISC  
 4 845C  
 PEDESTAL  
 1 PLAC  
 2 845C  
 EVOLV8/100TIP  
 1 PLACP

52 5.404 KFT TO PFP  
 F 2611-1 SW BARLEY FIELD DR  
 EVOLV8/100TIP (PPA) 845C  
 PON1950H,421-428

6 845C  
 1 TESTP  
 3 845C  
 PEDESTAL  
 1 PLAC  
 1 845C  
 EVOLV8/100TIP  
 1 PLACP

51 5.246 KFT TO PFP  
 F 2619-1 SW BARLEY FIELD DR  
 EVOLV8/100TIP (PPA) 845C  
 PON1950H,429-436

11 8645C  
 INNERDUCT1-1.25  
 85 DBOR  
 15 8645C  
 PEDESTAL  
 1 PLAC  
 104 85' INNERDUCT1-1.25" (PPA) 8645C

PROJECT # <b>A052GAE</b>		DATE SVC REQ'D 03/03/2025	
NPANNX 816524	GEO LOC EE4160	CLLI KSCYMO41	
PRIMARY ENGR.: PEDERSEN, CHARLES			
ENGR. ID: CP861N		PERMIT REQ'D.	Y
PHONE #: 8168133667		PRINT 10 OF 18	

PRINT 9

6 (PPA) 845C  
FNAP-CBL-048-T  
PON1950H, 373-420

3 845C  
1 TESTP

2 845C  
EVOLV12/100TIP  
1 PLACP

4 845C  
PEDESTAL  
1 PLAC

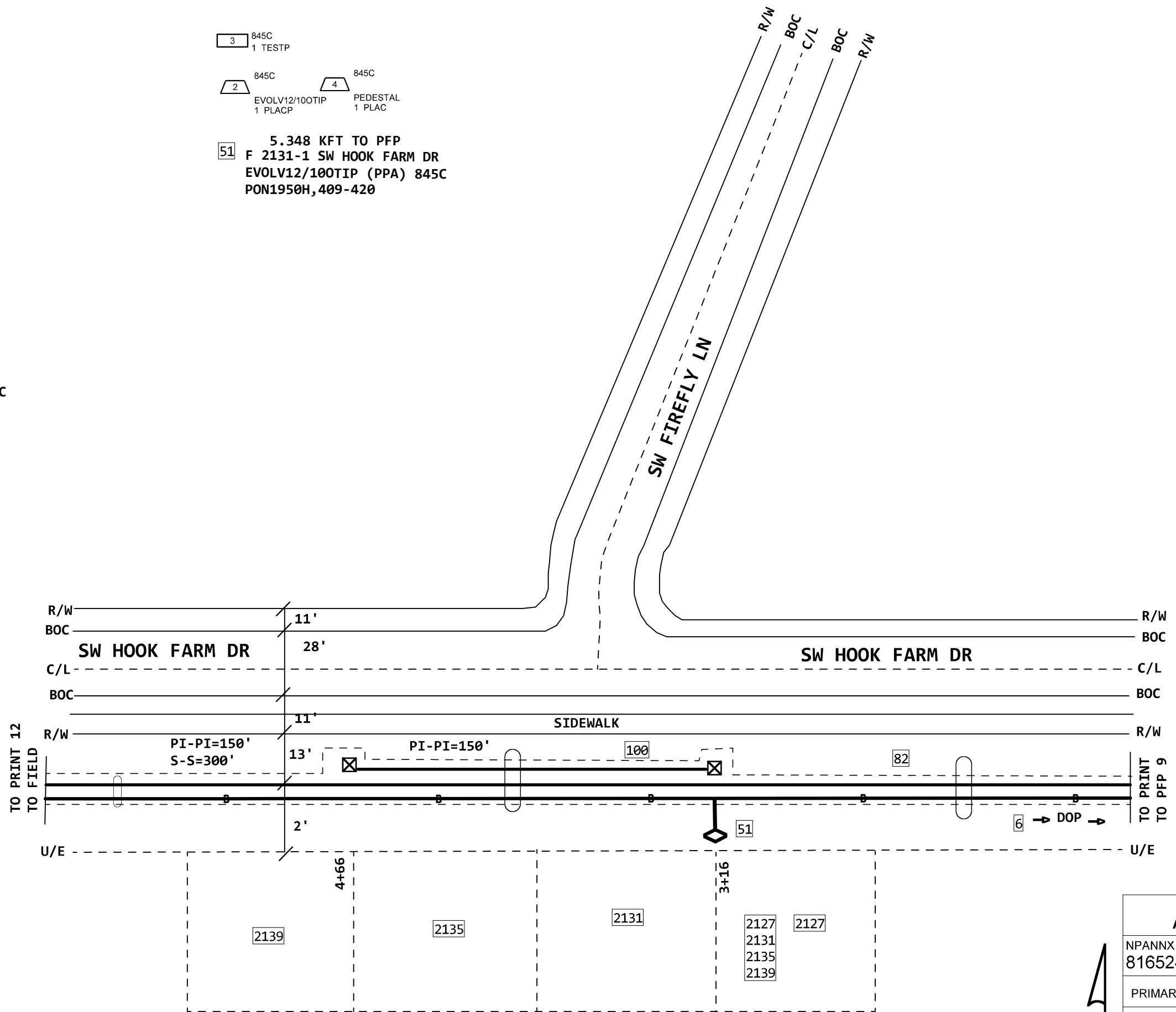
51 5.348 KFT TO PFP  
F 2131-1 SW HOOK FARM DR  
EVOLV12/100TIP (PPA) 845C  
PON1950H, 409-420

PRINT 9

82 INNERDUCT1-1.5" (PPA) 845C

8645C 8645C  
5 PEDESTAL 1 PLAC  
1 INNERDUCT1-1.25  
150 PULLBK

100 150' INNERDUCT1-1.25" (PPA) 8645C

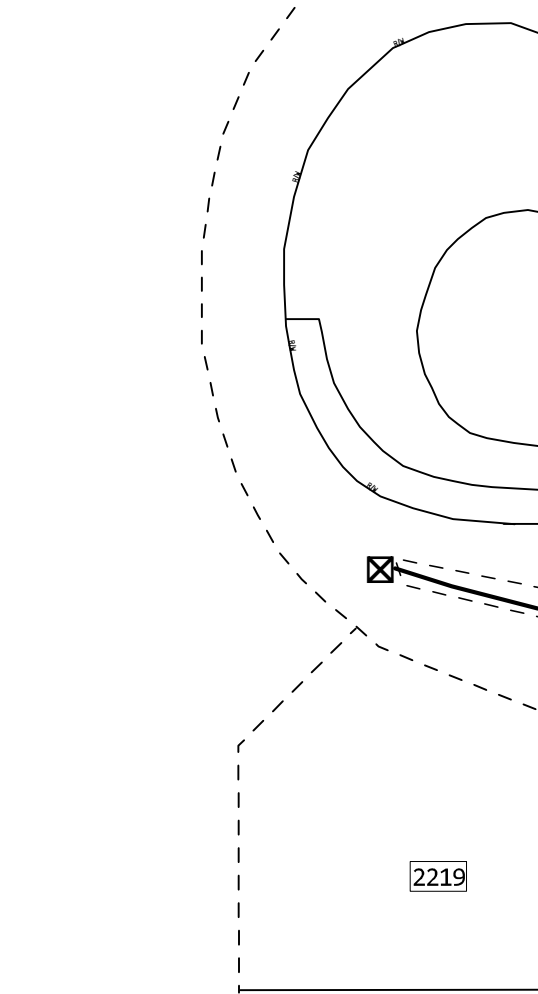


PROJECT # <b>A052GAE</b>		DATE SVC REQ'D 03/03/2025
NPANNX 816524	GEO LOC EE4160	CLLI KSCYMO41
PRIMARY ENGR.: PEDERSEN, CHARLES		
ENGR. ID: CP861N	PERMIT REQ'D.	Y
PHONE #: 8168133667	PRINT 11 OF 18	

PRINT 9

- 6 (PPA) 845C  
FNAP-CBL-048-T  
PON1950H, 373-420
- 80 608' INNERDUCT1-1.5" (PPA) 845C
- 82 INNERDUCT1-1.5" (PPA) 845C
- 83 150' INNERDUCT1-1.5" (PPA) 845C
- 84 310' INNERDUCT1-1.5" (PPA) 845C

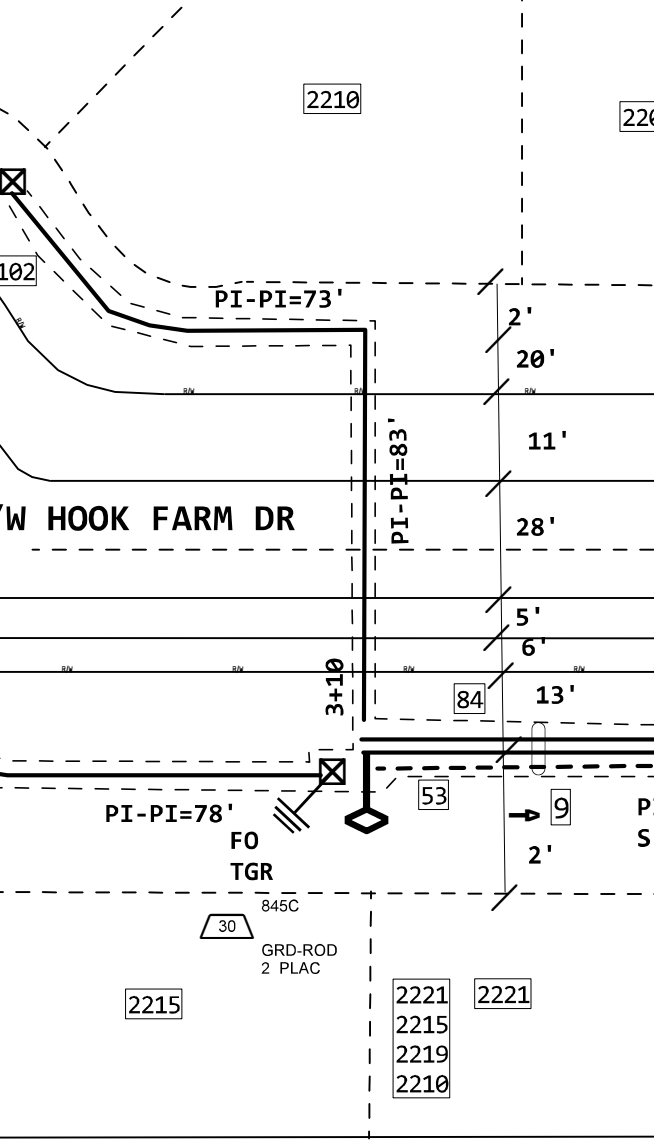
- 70 170' TRACERWIRE (PPA) 845C



- 22 845C EVOLV6/4000TIP 1 PLFLEX
- 27 845C 1 MISC
- 18 845C PEDESTAL 1 PLAC
- 25 845C 1 TESTP

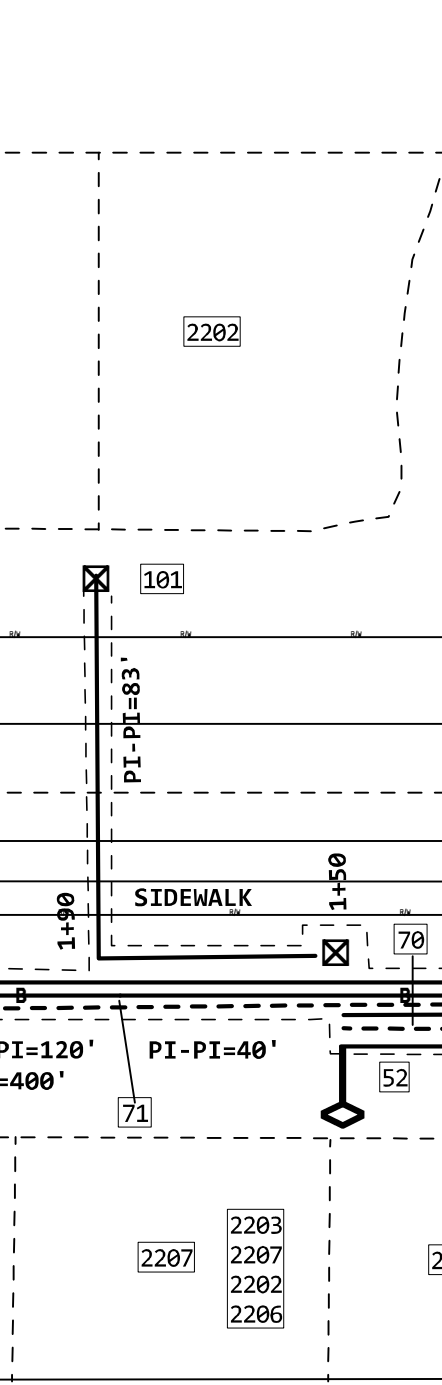
- 13 8645C INNERDUCT1-1.25 108 PULLBK
- 12 8645C PEDESTAL 1 PLAC
- 100 108' INNERDUCT1-1.25" (PPA) 8645C
- 15 8645C INNERDUCT1-1.25 83 DBOR
- 14 8645C INNERDUCT1-1.25 40 PULLBK
- 11 8645C PEDESTAL 1 PLAC
- 101 123' INNERDUCT1-1.25" (PPA) 8645C
- 17 8645C INNERDUCT1-1.25 156 DBOR
- 10 8645C PEDESTAL 1 PLAC
- 102 156' INNERDUCT1-1.25" (PPA) 8645C
- 16 8645C INNERDUCT1-1.25 78 DBOR
- 9 8645C PEDESTAL 1 PLAC
- 103 78' INNERDUCT1-1.25" (PPA) 8645C

- 71 330' TRACERWIRE (PPA) 845C



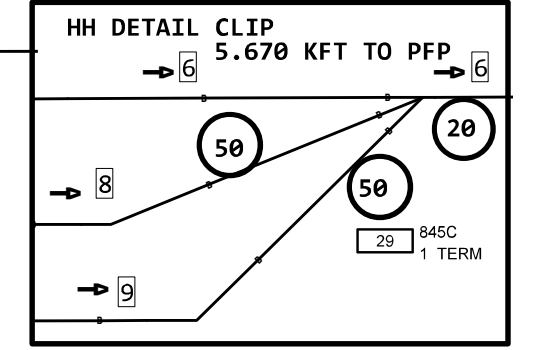
- 53 6.070 KFT TO PFP  
F 2211-1 SW HOOK FARM DR  
EVOLV6/4000TIP (PPA) 845C  
PON1950H, 391-396
- 52 5.970 KFT TO PFP  
F 2203-1 SW HOOK FARM DR  
EVOLV6/3000TIP (PPA) 845C  
PON1950H, 397-402

- 5 845C CONT-PL-CABLE 300 IDUC
- 8 (PPA) 845C 300' TAIL  
PON1950H, 397-402
- 6 845C CONT-PL-CABLE 400 IDUC
- 9 (PPA) 845C 400' TAIL  
PON1950H, 391-396

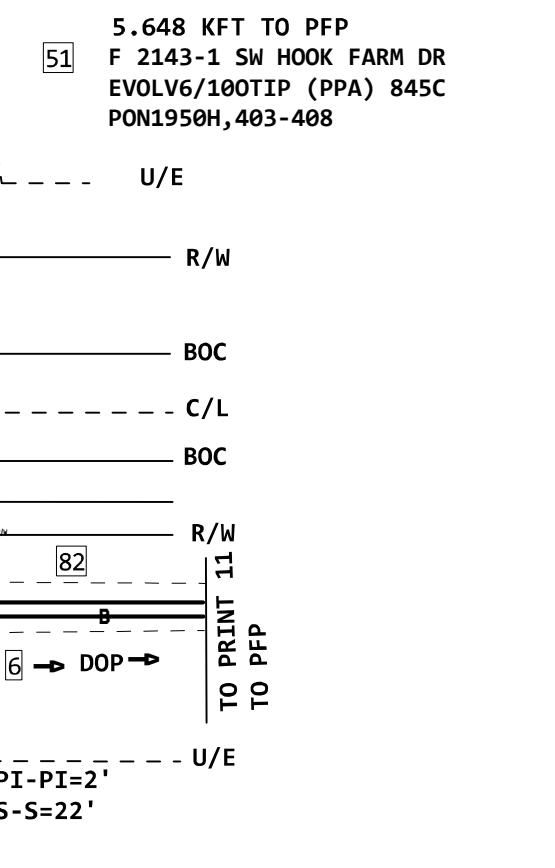


- 19 845C PEDESTAL 1 PLAC
- 26 845C 1 TESTP
- 23 845C EVOLV6/3000TIP 1 PLFLEX
- 28 845C 1 MISC

TIER 15  
HH 2117 HOK FRM  
HH-3X5X3 (PPA) 845C  
3 X 5 X 3 = 45  
FID:104556090



- 21 845C EVOLV6/100TIP 1 PLAC
- 24 845C 1 TESTP
- 51 5.648 KFT TO PFP  
F 2143-1 SW HOOK FARM DR  
EVOLV6/100TIP (PPA) 845C  
PON1950H, 403-408



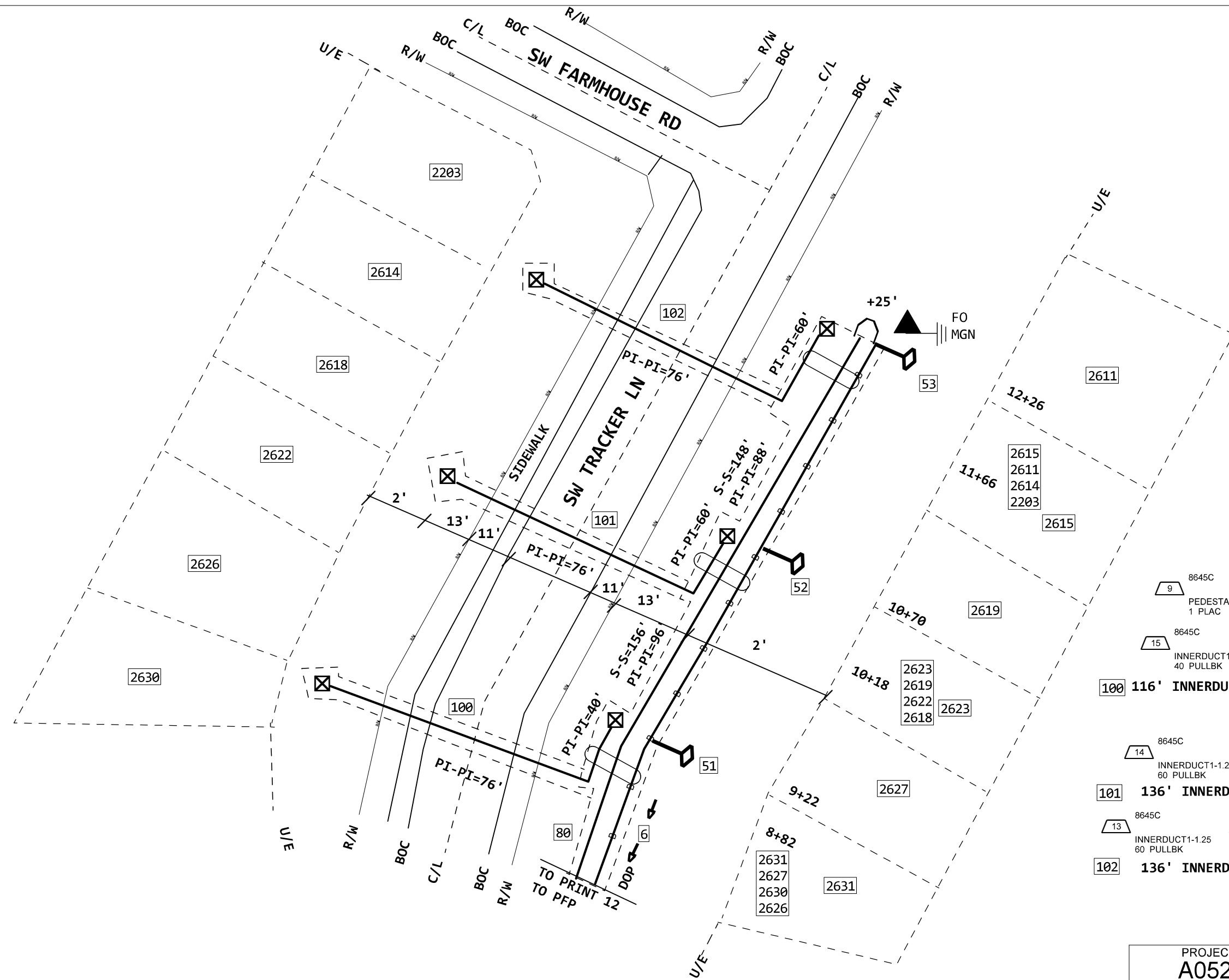
PROJECT # <b>A052GAE</b>		DATE SVC REQ'D 03/03/2025
NPANNX 816524	GEO LOC EE4160	CLLI KSCYMO41
PRIMARY ENGR.: PEDERSEN, CHARLES		
ENGR. ID: CP861N	PERMIT REQ'D.	Y
PHONE #: 8168133667	PRINT 12 OF 18	

PRINT 9

6 (PPA) 845C  
FNAP-CBL-048-T  
PON1950H, 373-420

PRINT 12

80 INNERDUCT1-1.5" (PPA) 845C



18 845C  
1 TESTP  
845C  
6 845C  
2 845C  
PEDESTAL 1 PLAC  
EVOLV6/100TIP 1 PLACP

5.974 KFT TO PFP

51 F 2627-1 SW TRACKER LN  
EVOLV6/100TIP (PPA) 845C  
PON1950H, 385-390

17 845C  
1 TESTP  
845C  
5 845C  
1 845C  
PEDESTAL 1 PLAC  
EVOLV6/100TIP 1 PLACP

6.130 KFT TO PFP

52 F 2619-1 SW TRACKER LN  
EVOLV6/100TIP (PPA) 845C  
PON1950H, 379-384

16 845C  
1 TESTP  
845C  
4 845C  
3 845C  
PEDESTAL 1 PLAC  
EVOLV6/100TIP 1 PLACP

6.278 KFT TO PFP

53 F 2611-1 SW TRACKER LN  
EVOLV6/100TIP (PPA) 845C  
PON1950H, 373-378

9 8645C  
PEDESTAL 1 PLAC

15 8645C  
INNERDUCT1-1.25 40 PULLBK

12 8645C  
INNERDUCT1-1.25 76 DBOR

100 116' INNERDUCT1-1.25" (PPA) 8645C

14 8645C  
INNERDUCT1-1.25 60 PULLBK

11 8645C  
INNERDUCT1-1.25 76 DBOR

8 8645C  
PEDESTAL 1 PLAC

101 136' INNERDUCT1-1.25" (PPA) 8645C

13 8645C  
INNERDUCT1-1.25 60 PULLBK

10 8645C  
INNERDUCT1-1.25 76 DBOR

7 8645C  
PEDESTAL 1 PLAC

102 136' INNERDUCT1-1.25" (PPA) 8645C

PROJECT # <b>A052GAE</b>		DATE SVC REQ'D 03/03/2025	
NPANNX 816524	GEO LOC EE4160	CLLI KSCYMO41	
PRIMARY ENGR.: PEDERSEN, CHARLES			
ENGR. ID: CP861N		PERMIT REQ'D.	Y
PHONE #: 8168133667		PRINT 13 OF 19	

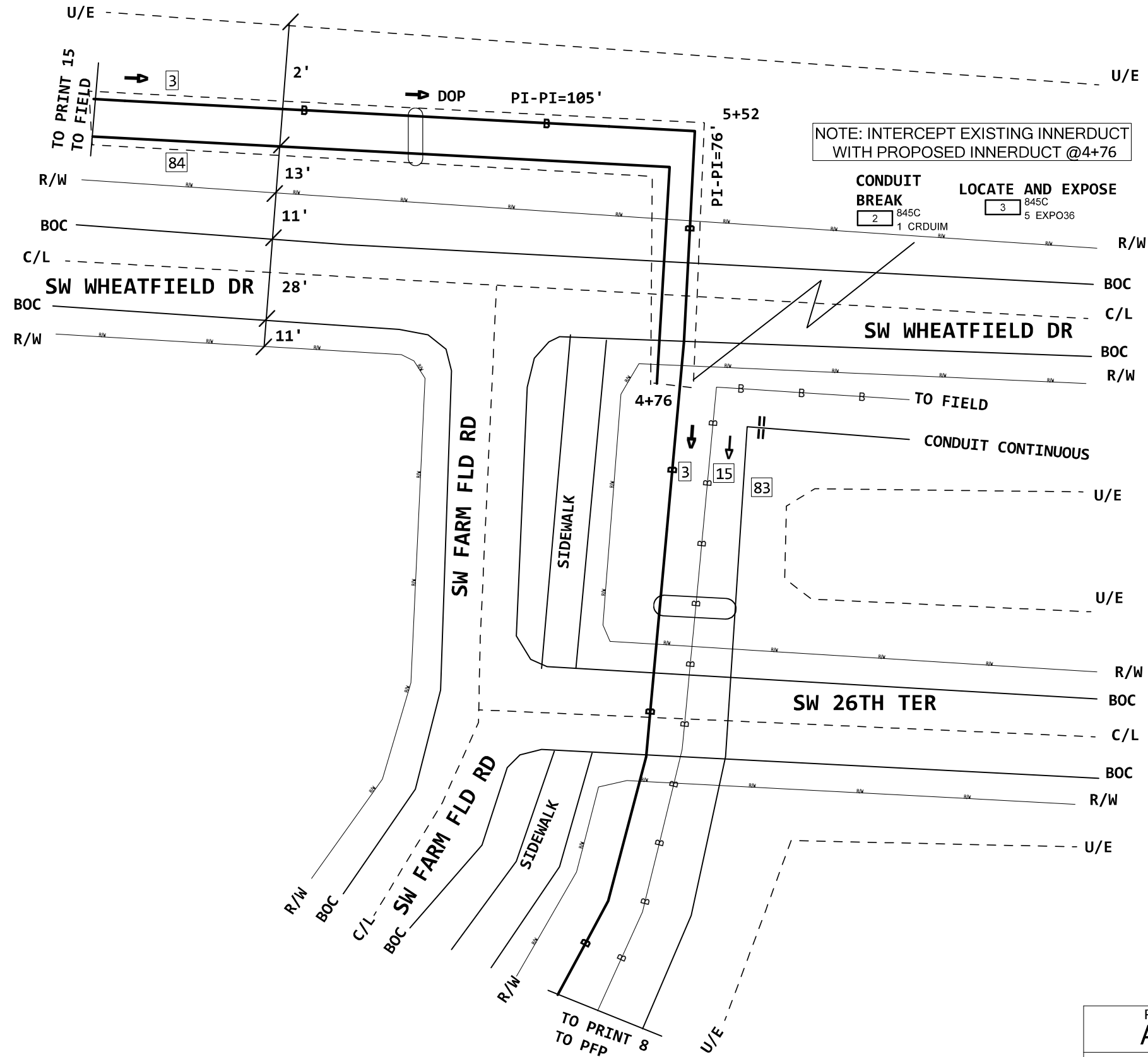
3 (PPA) 845C  
 FNAP-CBL-144-T  
 A, 1-12  
 PON1950H, 241-372

15 (2023) 845C 549'  
 5BQ2MT-024  
 PON1950H, 25-42  
 A, 43-48

83 INNERDUCT1-2" 845C

845C  
 1 INNERDUCT1-1.5  
 644 DBOR

84 644' INNERDUCT1-1.5" (PPA) 845C

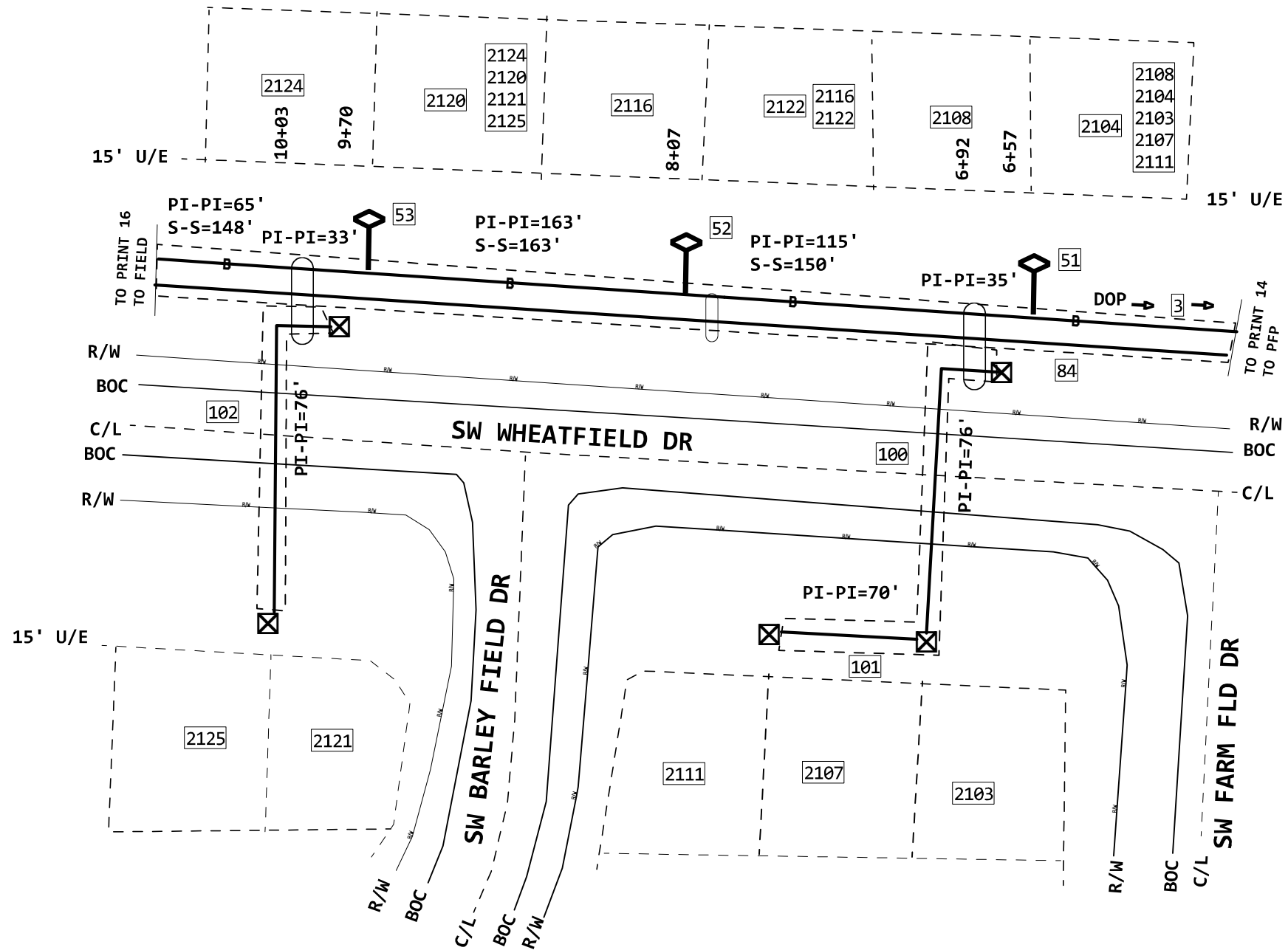


PROJECT # <b>A052GAE</b>		DATE SVC REQ'D 03/03/2025
NPANNX 816524	GEO LOC EE4160	CLLI KSCYMO41
PRIMARY ENGR.: PEDERSEN, CHARLES		
ENGR. ID: CP861N	PERMIT REQ'D.	Y
PHONE #: 8168133667	PRINT 14 OF 18	

3 (PPA) 845C  
 FNAP-CBL-144-T  
 A,1-12  
 PON1950H,241-372

PRINT 14  
 84 INNERDUCT1-1.5" (PPA) 845C

- 11 8645C  
 INNERDUCT1-1.5  
 76 DBOR
- 10 8645C  
 INNERDUCT1-1.5  
 35 PULLBK
- 9 8645C  
 PEDESTAL  
 1 PLAC
- 100 111' INNERDUCT1-1.5" (PPA) 8645C
- 14 8645C  
 INNERDUCT1-1.25  
 70 DBOR
- 8 8645C  
 PEDESTAL  
 1 PLAC
- 101 70' INNERDUCT1-1.25" (PPA) 8645C
- 13 8645C  
 INNERDUCT1-1.25  
 76 DBOR
- 12 8645C  
 INNERDUCT1-1.25  
 33 PULLBK
- 7 8645C  
 PEDESTAL  
 1 PLAC
- 102 109' INNERDUCT1-1.25" (PPA) 8645C



17 845C  
 1 TESTP

5 845C  
 PEDESTAL  
 1 PLAC

1 845C  
 EVOLV8/100TIP  
 1 PLAC

4.785 KFT TO PFP  
 51 F 2104-1 SW WHEATFIELD DR  
 EVOLV8/100TIP (PPA) 845C  
 PON1950H,365-372

16 845C  
 1 TESTP

6 845C  
 PEDESTAL  
 1 PLAC

2 845C  
 EVOLV4/100TIP  
 1 PLAC

4.935 KFT TO PFP  
 52 F 2112-1 SW WHEATFIELD DR  
 EVOLV4/100TIP (PPA) 845C  
 PON1950H,361-364

15 845C  
 1 TESTP

4 845C  
 PEDESTAL  
 1 PLAC

3 845C  
 EVOLV6/100TIP  
 1 PLAC

5.098 KFT TO PFP  
 53 F 2120-1 SW WHEATFIELD DR  
 EVOLV6/100TIP (PPA) 845C  
 PON1950H,355-360

PROJECT # <b>A052GAE</b>		DATE SVC REQ'D 03/03/2025
NPANNX 816524	GEO LOC EE4160	CLLI KSCYMO41
PRIMARY ENGR.: PEDERSEN, CHARLES		
ENGR. ID: CP861N	PERMIT REQ'D.	Y
PHONE #: 8168133667	PRINT 15 OF 18	

PRINT 8  
 3 (PPA) 845C  
 FNAP-CBL-144-T  
 A, 1-12  
 PON1950H, 241-372

5 (PPA) 845C 643'  
 FNAP-CBL-024-T  
 PON1950H, 325-348

PRINT 14  
 84 INNERDUCT1-1.5" (PPA) 845C

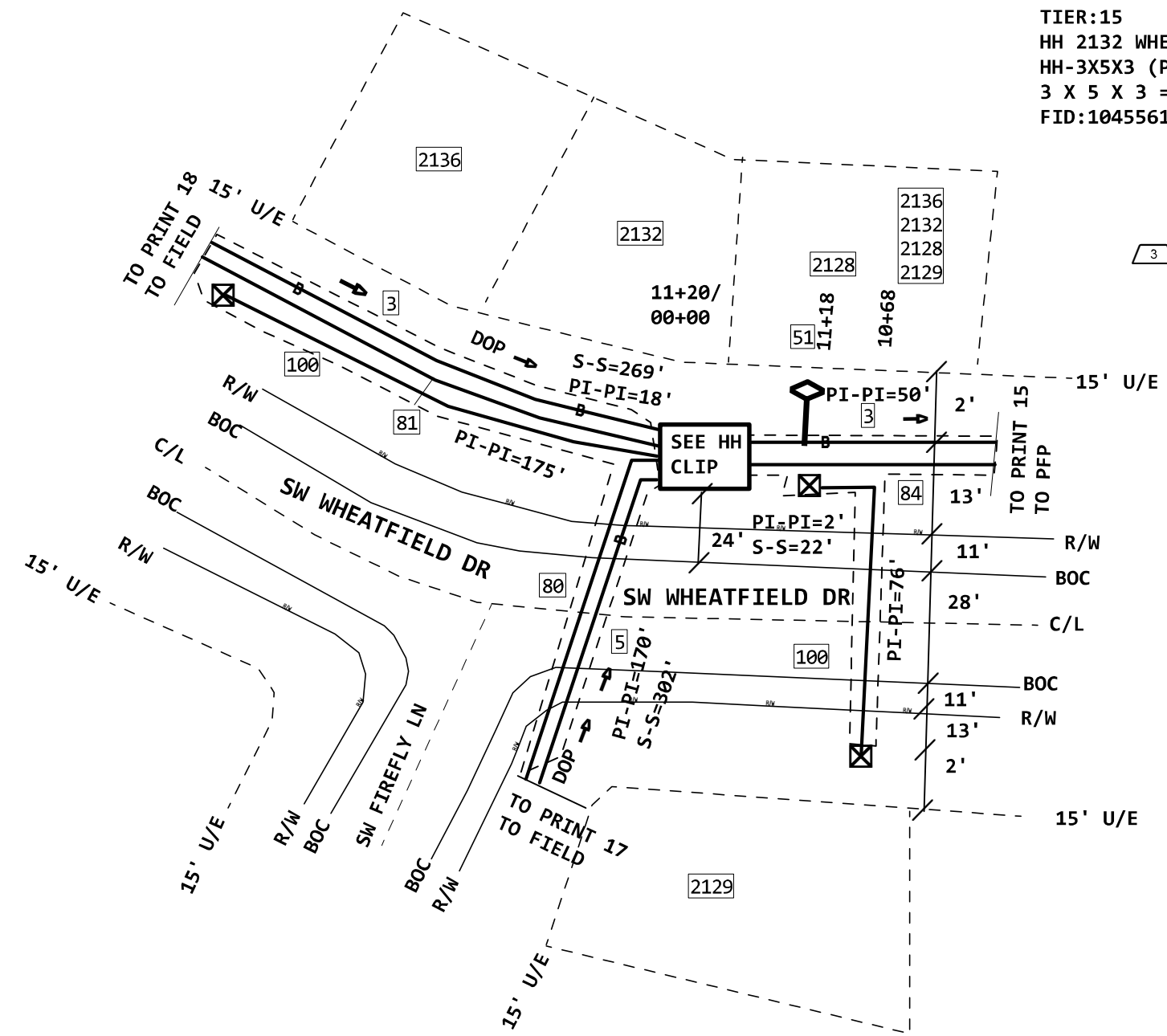
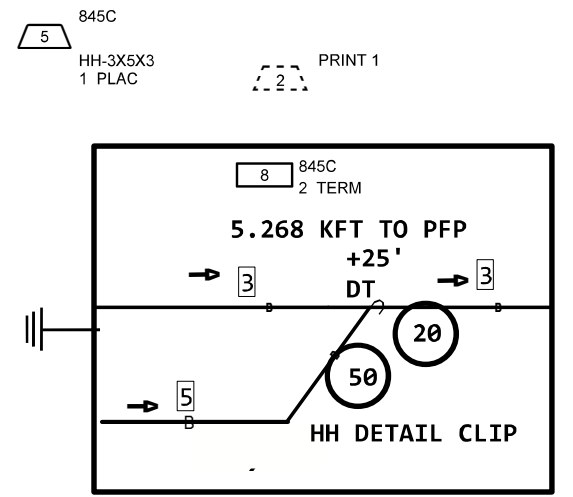
81 658' INNERDUCT1-1.5" (PPA) 845C  
 80 543' INNERDUCT1-1.5" (PPA) 845C

9 845C 1 TESTP  
 1 845C EVOLV6/100TIP 1 PLACP  
 2 845C PEDESTAL 1 PLAC

51 5.246 KFT TO PFP  
 F 2128-1 SW WHEATFIELD DR  
 EVOLV6/100TIP (PPA) 845C  
 PON1950H, 349-354

TIER:15  
 HH 2132 WHETFLD  
 HH-3X5X3 (PPA) 845C  
 3 X 5 X 3 = 45  
 FID:104556164

FO TGR  
 845C  
 GRD-ROD  
 2 PLAC



4 8645C PEDESTAL 1 PLAC  
 7 8645C INNERDUCT1-1.25 76 DBOR  
 6 8645C INNERDUCT1-1.25 50 PULLBK

100 126' INNERDUCT1-1.25" (PPA) 845C



PROJECT # <b>A052GAE</b>		DATE SVC REQ'D 03/03/2025	
NPANNX 816524	GEO LOC EE4160	CLLI KSCYMO41	
PRIMARY ENGR.: PEDERSEN, CHARLES			
ENGR. ID: CP861N		PERMIT REQ'D.	Y
PHONE #: 8168133667		PRINT 16 OF 18	



PRINT 16

5 (PPA) 845C  
FNAP-CBL-024-T  
PON1950H, 325-348

6 845C PEDESTAL 1 PLAC  
3 845C EVOLV6/100TIP 1 PLACP  
19 845C 1 TESTP

51 5.570 KFT TO PFP  
F 2603-1 SW FIREFLY LN  
EVOLV6/100TIP (PPA) 845C  
PON1950H, 343-348

5 845C PEDESTAL 1 PLAC  
2 845C EVOLV6/100TIP 1 PLACP  
20 845C 1 TESTP

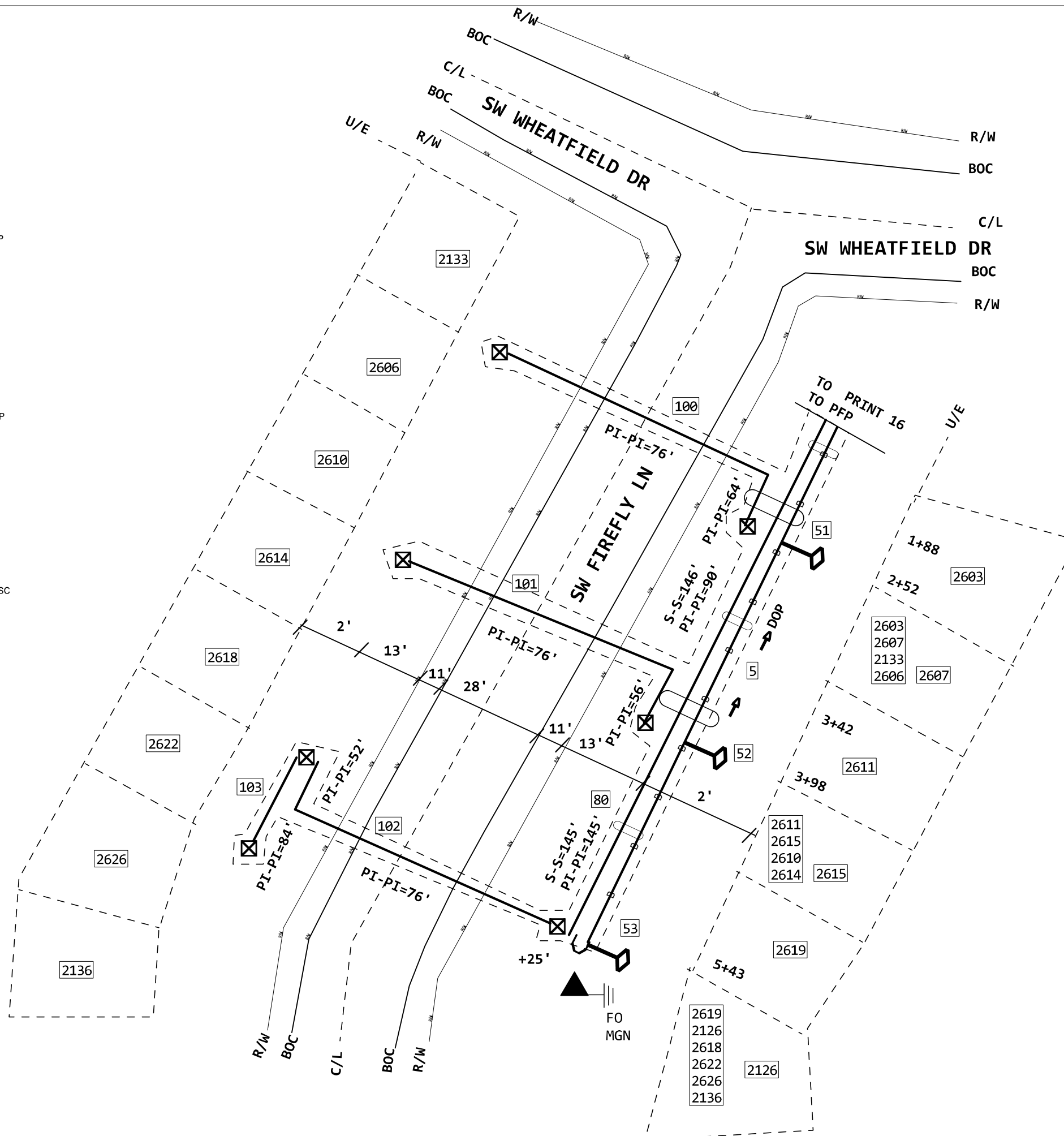
52 5.716 KFT TO PFP  
F 2611-1 SW FIREFLY LN  
EVOLV6/100TIP (PPA) 845C  
PON1950H, 337-342

18 845C 1 TESTP  
4 845C PEDESTAL 1 PLAC  
1 845C EVOLV12/100TIP 1 PLACP  
21 845C 1 MISC

53 5.861 KFT TO PFP  
F 2619-1 SW FIREFLY LN  
EVOLV12/100TIP (PPA) 845C  
PON1950H, 325-336

PRINT 16

80 INNERDUCT1-1.5" (PPA) 845C



11 8645C INNERDUCT1-1.25 76 DBOR  
10 8645C PEDESTAL 1 PLAC  
15 8645C INNERDUCT1-1.25 64 PULLBK  
16 8645C INNERDUCT1-1.25 56 PULLBK  
12 8645C INNERDUCT1-1.25 76 DBOR  
9 8645C PEDESTAL 1 PLAC  
14 8645C INNERDUCT1-1.5 128 DBOR  
8 8645C PEDESTAL 1 PLAC  
17 8645C INNERDUCT1-1.25 52 PULLBK  
13 8645C INNERDUCT1-1.25 84 DBOR  
7 8645C PEDESTAL 1 PLAC

PROJECT # <b>A052GAE</b>		DATE SVC REQ'D 03/03/2025	
NPANNX 816524	GEO LOC EE4160	CLLI KSCYMO41	
PRIMARY ENGR.: PEDERSEN, CHARLES			
ENGR. ID: CP861N		PERMIT REQ'D.	Y
PHONE #: 8168133667		PRINT 17 OF 18	

3 (PPA) 845C  
FNAP-CBL-144-T  
A,1-12  
PON1950H,241-372  
PRINT 16

81 INNERDUCT1-1.5" (PPA) 845C

- 12 845C PEDESTAL 1 PLAC
- 2 845C EVOLV6/100TIP 1 PLAC
- 3 845C 1 TESTP
- 51 5.537 KFT TO PFP  
F 2506-1 SW TRACKER LN  
EVOLV6/100TIP (PPA) 845C  
PON1950H,319-324
- 4 845C 1 TESTP
- 5 845C 1 MISC
- 1 845C EVOLV6/100TIP 1 PLAC
- 13 845C PEDESTAL 1 PLAC
- 52 5.692 KFT TO PFP  
F 2602-1 SW TRACKER LN  
EVOLV6/100TIP (PPA) 845C  
PON1950H,313-318

14 8645C PEDESTAL 1 PLAC

9 8645C INNERDUCT1-1.25 80 DBOR

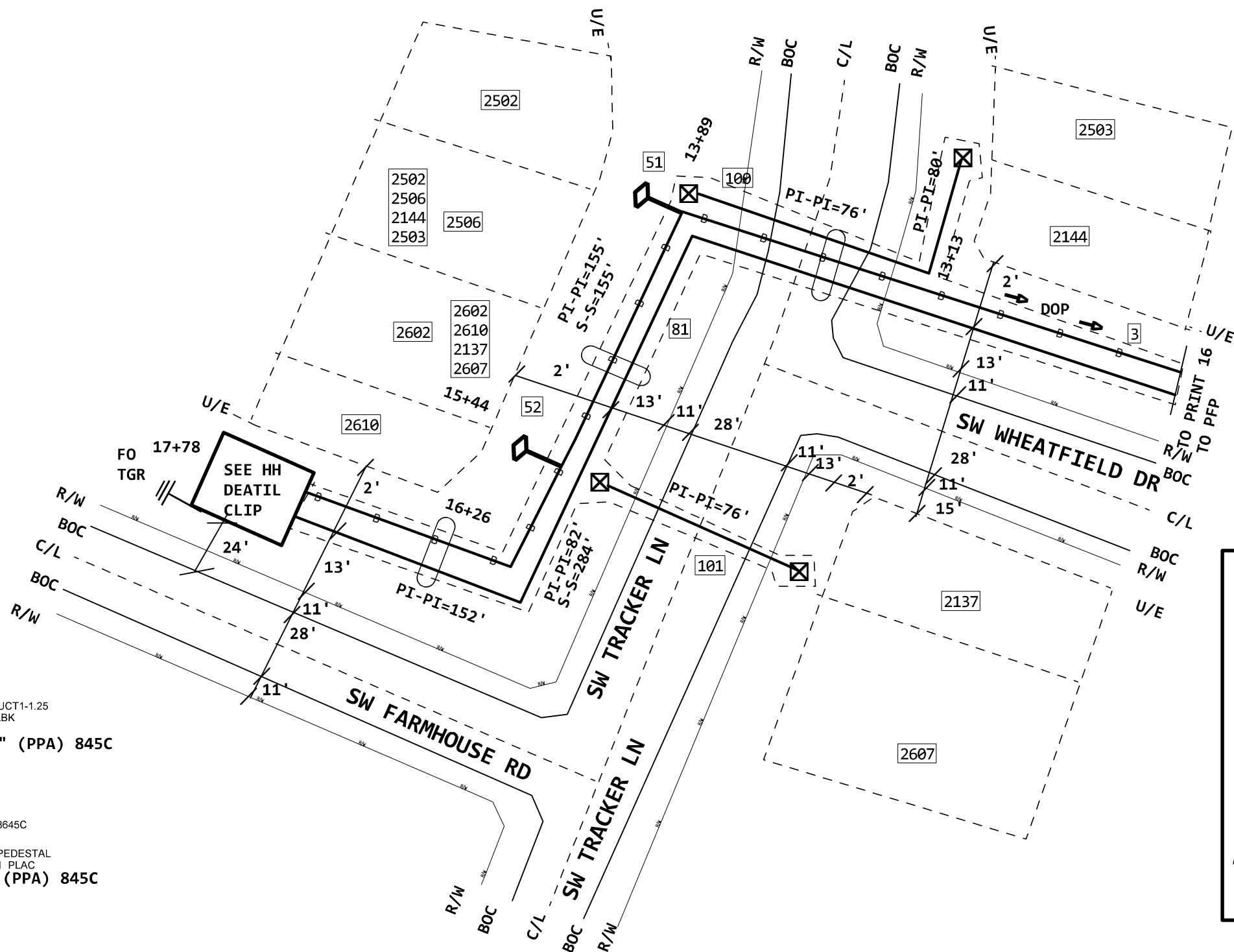
8 8645C INNERDUCT1-1.25 76 PULLBK

100 156' INNERDUCT1-1.25" (PPA) 845C

10 8645C INNERDUCT1-1.25 76 DBOR

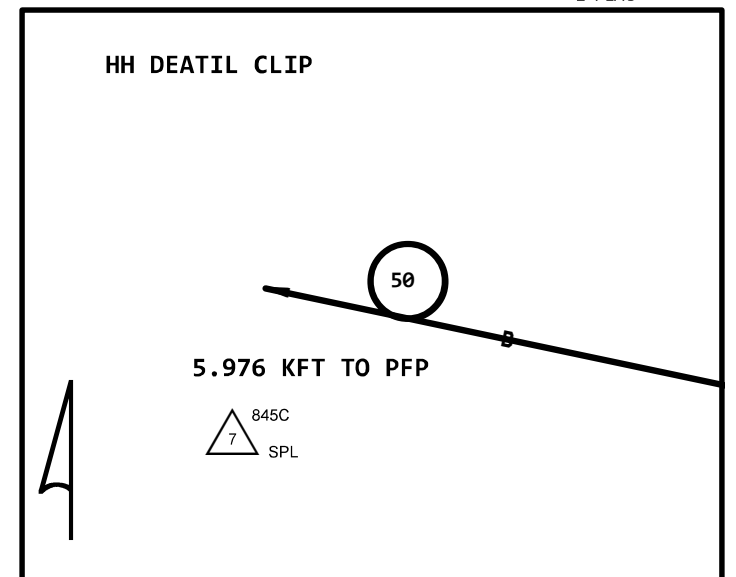
15 8645C PEDESTAL 1 PLAC

101 76' INNERDUCT1-1.25" (PPA) 845C



NOTE: COUNTS PON1950H241-312 ARE LEAVE IN HANDHOLE FOR FUTURE USE

TIER 15  
HH 2610 TRKR LN  
HH-3X5X3 (PPA) 845C  
3 X 5 X 3 = 45  
FID:104556158



PROJECT # <b>A052GAE</b>		DATE SVC REQ'D 03/03/2025
NPANNX 816524	GEO LOC EE4160	CLLI KSCYMO41
PRIMARY ENGR.: PEDERSEN, CHARLES		
ENGR. ID: CP861N	PERMIT REQ'D.	Y
PHONE #: 8168133667	PRINT 18 OF 18	