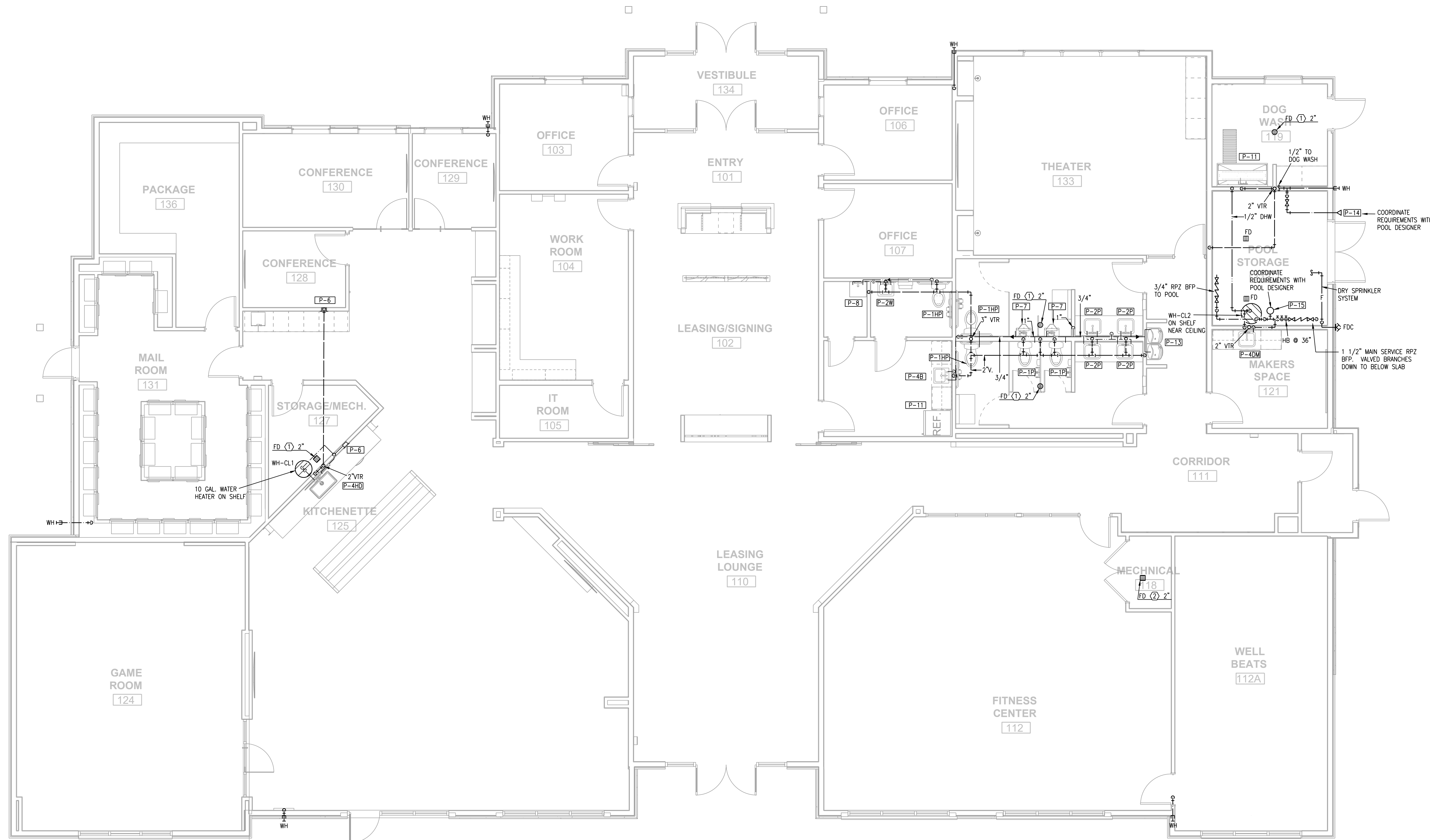




317.573.2222
www.mitschdesign.com



- NOTES:
1. ALL DRAIN, WASTE AND VENT PIPING IS 2" UNLESS NOTE OTHERWISE.
 2. ALL SUPPLY PIPING IS 1/2" UNLESS NOTED OTHERWISE. SUPPLY PIPING IS BELOW SLAB AS SHOWN.
 3. CONNECT ALL APPLIANCES OR EQUIPMENT PER MANUFACTURER'S INSTRUCTIONS.
 4. ALL PLUMBING VENTS SHALL BE 10 FEET FROM OPENINGS OR INTAKES.
 5. THERE SHALL BE NO PVC WITHIN RETURN AIR PLENUMS.
 6. ALL FIXTURES SHALL HAVE BLADDER TYPE SHOCK SUPPRESSORS FOR EACH CHASE.
 7. SEE THE ARCHITECTURAL DRAWINGS FOR ALL FIXTURES MOUNTING HEIGHTS.
 8. REFER TO THE ARCHITECTURAL DRAWINGS FOR FLOOR DRAIN LOCATIONS AND FLOOR SLOPES IF PRESENT. FLOOR DRAINS ARE TYPE 1, 2" UNLESS NOTED OTHERWISE.
 9. ROUTE DRAIN PIPING FROM WATER HEATERS, AIR HANDLERS OR EQUIPMENT TO FLOOR DRAINS. PROVIDE PROPER TRAPS.
 10. ROUTE NO PIPING OVER ELECTRICAL EQUIPMENT.
 11. PROVIDE 1/2" TYPE 1-PC INSULATION ON HW PIPING FOR 8FT AFTER WATER HEATER.
 12. SEE ARCHITECTURAL DRAWINGS FOR FIXTURES AND DETAILS.



EVREN APARTMENTS
NEW CONSTRUCTION
EVREN APARTMENTS CLUBHOUSE
LEE'S SUMMIT, MISSOURI
PERMIT SET



1/23/2025

MD PROJECT #:	24097
DRAWN BY:	CAD
CHECKED BY:	RRB
PRELIMINARY	-
PRICING SET	
PERMIT SET	5/1/2024
REVISION SCHEDULE	
#	DATE DESCRIPTION
1	07/08/24 TRACKER REVISION
3	01/23/25 CITY COMMENTS 2

ALL IDEAS, DESIGNS AND PLANS (ORIGINAL WORKS OF AUTHORSHIP FIXED IN A TANGIBLE MEDIUM OF EXPRESSION INDICATED OR PRESENTED BY THESE DRAWINGS AND DOCUMENTS ARE OWNED BY, AND ARE THE PROPERTY OF MITSCH DESIGN. ALL RIGHTS RESERVED. EXCEPT FOR USES EXPRESSLY PERMITTED IN WRITING.

PARTIAL CLUBHOUSE PLAN - PLUMBING

P102

1 CLUBHOUSE PLAN

2022.e/04 Rich Boardmore (89.8)/Cityscape Tudor Clubhouse-24 04035/01 CAD/P101_02.dwg, P102, 1/23/2025 11:50:32 AM.
 2022.e/04 Rich Boardmore (89.8)/Cityscape Tudor Clubhouse-24 04035/01 CAD/P101_02.dwg, P102, 1/23/2025 11:50:32 AM.